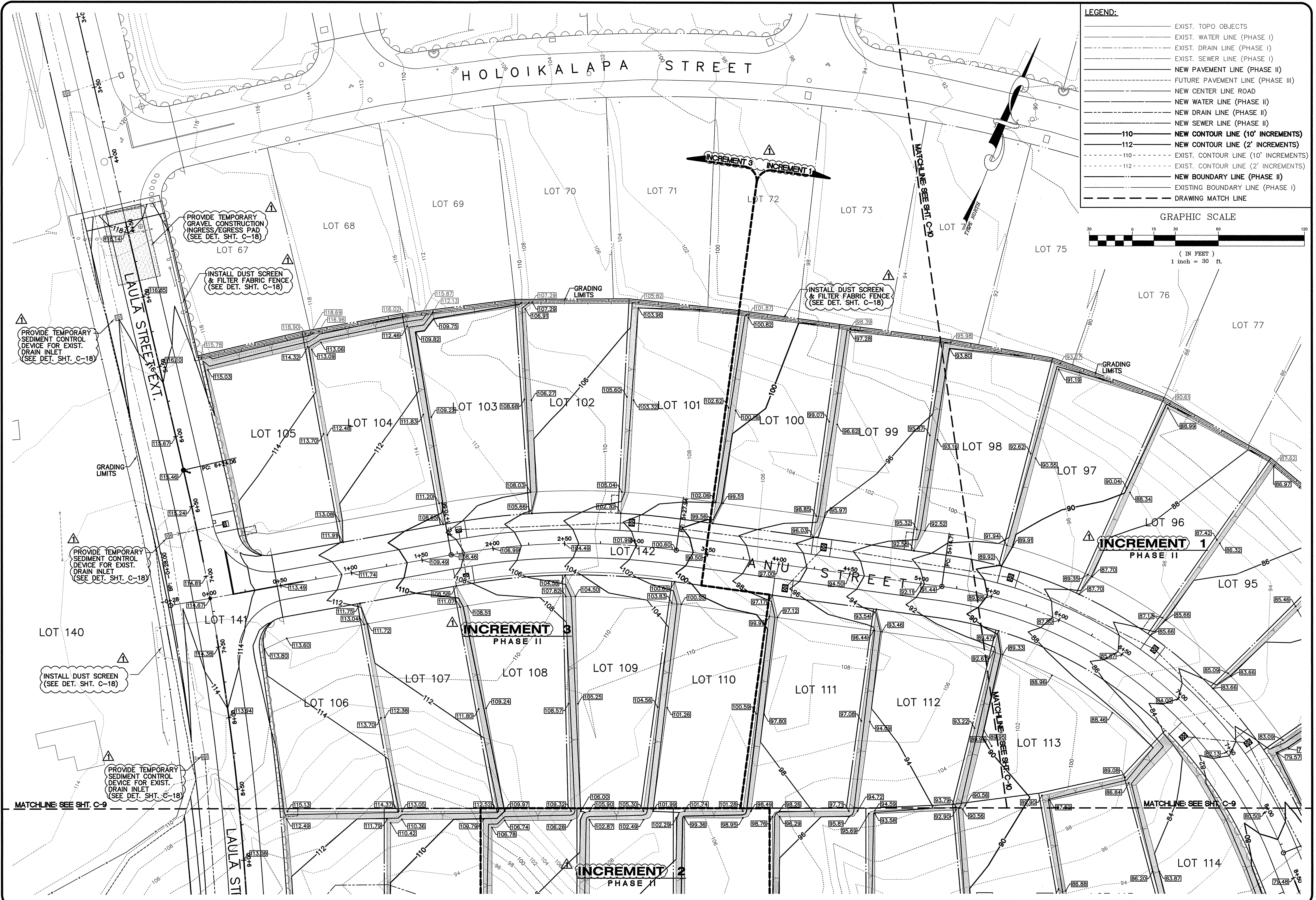
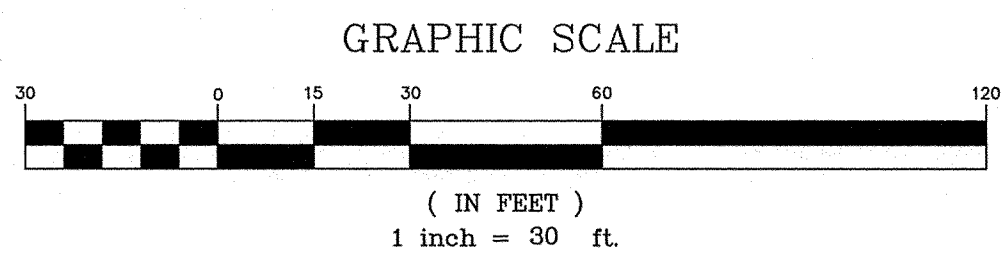


Project No.: 11-157
Drawing No.: 11-157 CON.dwg



LEGEND:

- EXIST. TOPO OBJECTS
- EXIST. WATER LINE (PHASE I)
- EXIST. DRAIN LINE (PHASE I)
- EXIST. SEWER LINE (PHASE I)
- NEW PAVEMENT LINE (PHASE II)
- FUTURE PAVEMENT LINE (PHASE III)
- NEW CENTER LINE ROAD
- NEW WATER LINE (PHASE II)
- NEW DRAIN LINE (PHASE II)
- NEW SEWER LINE (PHASE II)
- 110 NEW CONTOUR LINE (10' INCREMENTS)
- 112 NEW CONTOUR LINE (2' INCREMENTS)
- 110 EXIST. CONTOUR LINE (10' INCREMENTS)
- 112 EXIST. CONTOUR LINE (2' INCREMENTS)
- NEW BOUNDARY LINE (PHASE II)
- EXISTING BOUNDARY LINE (PHASE I)
- DRAWING MATCH LINE



ESAKI SURVEYING AND MAPPING, INC.

1610 Haleukana Street
Lihue, Kauai, Hawaii 96766
Ph. (808) 246-0625 Fax (808) 246-0229

CIVIL ENGINEERS • SURVEYORS • PLANNERS

REVISION	DATE	DESCRIPTION	BY	APPROVED
6-20-12		REVISED GRADING PLAN	WW	

WAYNE T. WADA
LICENSED PROFESSIONAL ENGINEER
No. 5281-C
HAWAII, USA

THIS WORK WAS PREPARED
BY ME OR UNDER MY SUPERVISION

Wayne T. Wada
EXPIRES: APRIL 30, 2014

**PILANI MAI KE KAI SUBDIVISION
PHASE II**

Anahola, Kauai, Hawaii

Tax Map Key: (4) 4-8-16: 03
(4) 4-8-22: 89

Developer/Owner:
Department of Hawaiian Home Lands
91-5420 Kapolei Parkway
Kapolei, HI 96707

GRADING PLANS

APPROVED:

COUNTY ENGINEER, DEPT. OF PUBLIC WORKS,
COUNTY OF KAUAI

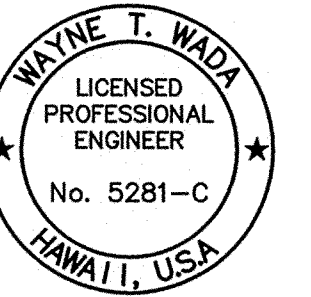
N.A.

MANAGER & CHIEF ENGINEER, DEPT. OF WATER,
COUNTY OF KAUAI

DESIGNED BY: WW	SHEET C-8 8 OF 44 SHEETS
DRAWN BY: CG	
DATE: 03/27/12	

REVISION	DATE	DESCRIPTION	BY	APPROVED
1	6-20-12	REVISED GRADING PLAN	WW	

REVISIONS



THIS WORK WAS PREPARED
BY ME OR UNDER MY SUPERVISION

Wayne T. Wada
EXPIRES: APRIL 30, 2014

**PILANI MAI KE KAI SUBDIVISION
PHASE II**

Anahola, Kauai, Hawaii

Tax Map Key: (4) 4-8-16: 03
(4) 4-8-22: 89

Developer/Owner:
Department of Hawaiian Home Lands
91-5420 Kapolei Parkway
Kapolei, HI 96707

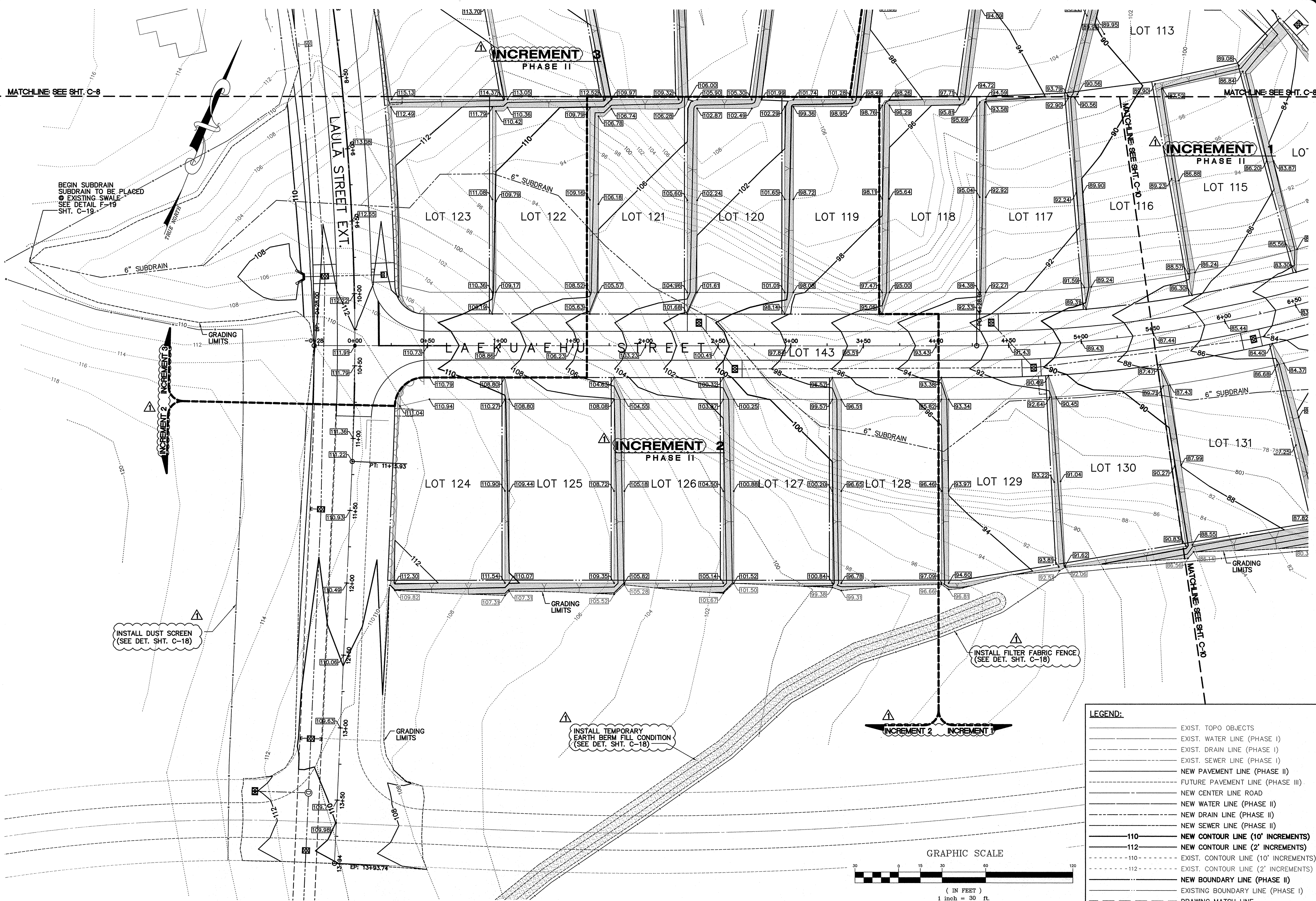
GRADING PLANS

APPROVED:

COUNTY ENGINEER, DEPT. OF PUBLIC WORKS,
COUNTY OF KAUAI

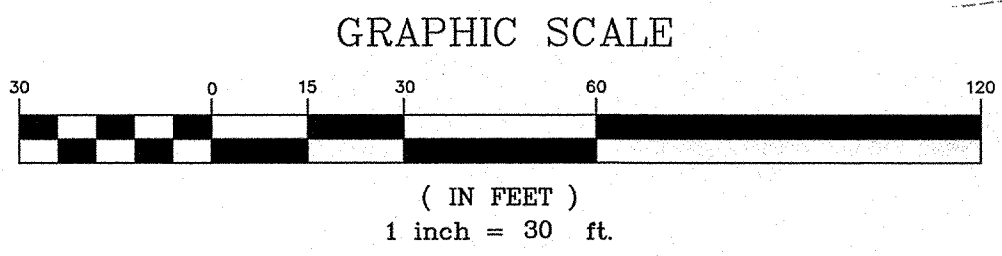
N.A.
MANAGER & CHIEF ENGINEER, DEPT. OF WATER,
COUNTY OF KAUAI

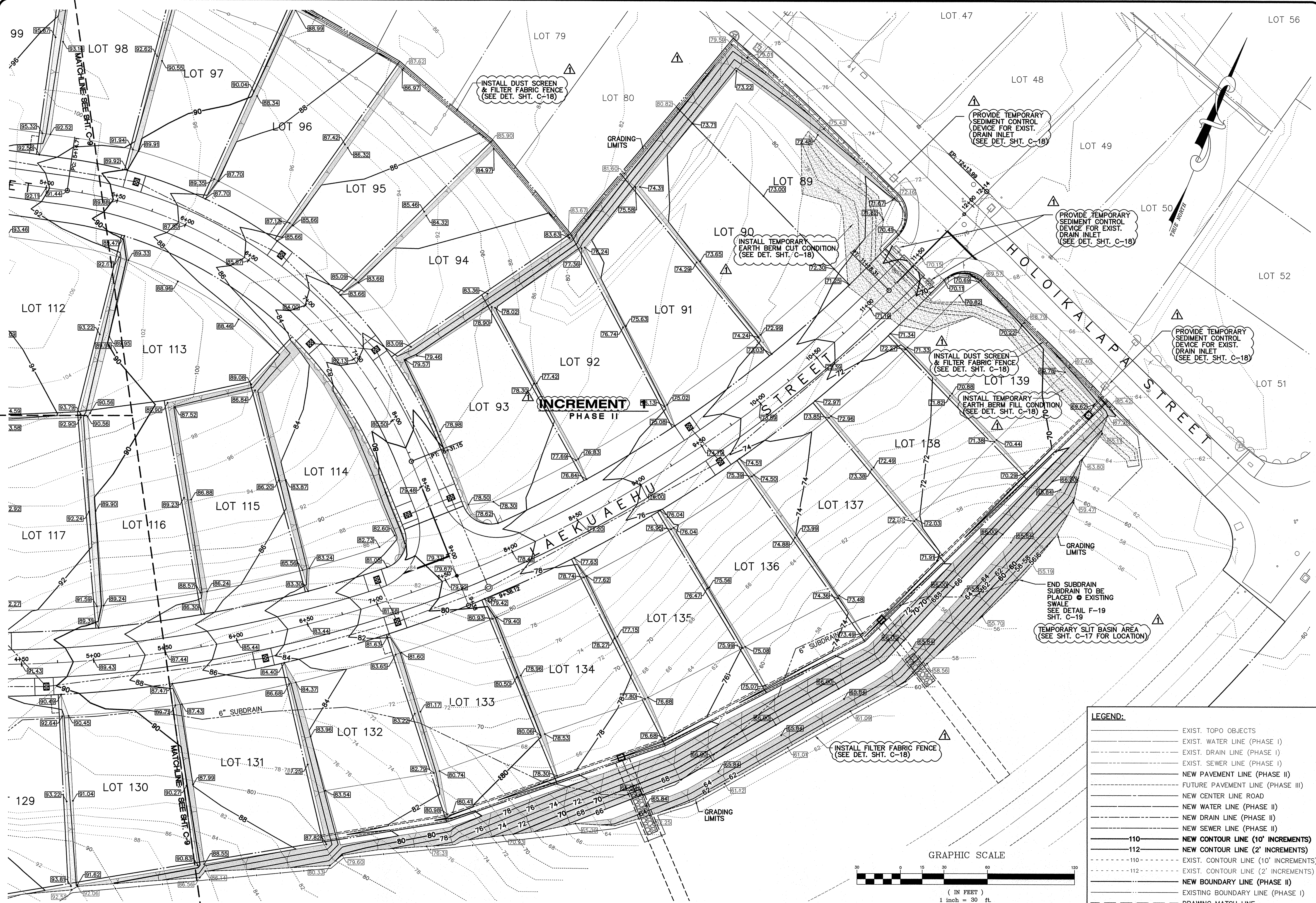
DESIGNED BY: WW
DRAWN BY: CG
DATE: 03/27/12
SHEET
C-9
9 OF 44 SHEETS



LEGEND:

---	EXIST. TOPO OBJECTS
---	EXIST. WATER LINE (PHASE I)
---	EXIST. DRAIN LINE (PHASE I)
---	EXIST. SEWER LINE (PHASE I)
---	NEW PAVEMENT LINE (PHASE II)
---	FUTURE PAVEMENT LINE (PHASE III)
---	NEW CENTER LINE ROAD
---	NEW WATER LINE (PHASE II)
---	NEW DRAIN LINE (PHASE II)
---	NEW SEWER LINE (PHASE II)
---	NEW CONTOUR LINE (10' INCREMENTS)
---	NEW CONTOUR LINE (2' INCREMENTS)
---	EXIST. CONTOUR LINE (10' INCREMENTS)
---	EXIST. CONTOUR LINE (2' INCREMENTS)
---	NEW BOUNDARY LINE (PHASE II)
---	EXISTING BOUNDARY LINE (PHASE I)
---	DRAWING MATCH LINE

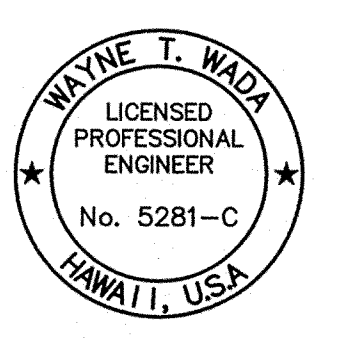




ESAKI
SURVEYING AND
MAPPING, INC.
1610 Haleukona Street
Lihue, Kauai, Hawaii 96766
Ph. (808) 246-0625 Fax (808) 246-0229

CIVIL ENGINEERS • SURVEYORS • PLANNERS

REVISION	DATE	DESCRIPTION	BY	APPROVED
6-20-12		REVISED GRADING PLAN	WW	



THIS WORK WAS PREPARED
BY ME OR UNDER MY SUPERVISION

Wayne T. Wada
EXPIRES: APRIL 30, 2014

PILANI MAI KE KAI SUBDIVISION
PHASE II
Anahola, Kauai, Hawaii
Tax Map Key: (4) 4-8-16: 03
(4) 4-8-22: 89
Developer/Owner:
Department of Hawaiian Home Lands
91-5420 Kapolei Parkway
Kapolei, HI 96707

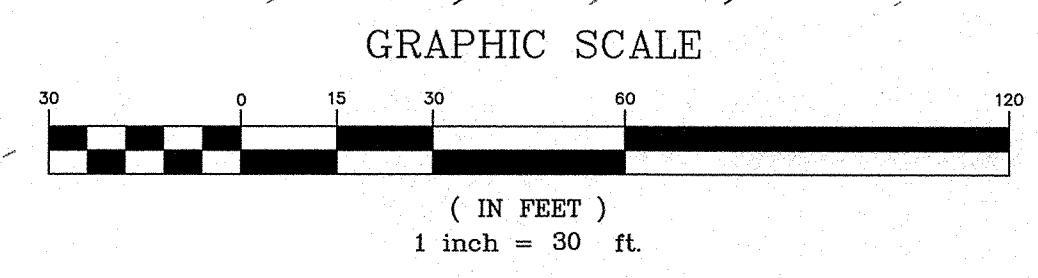
GRADING PLANS

APPROVED:

COUNTY ENGINEER, DEPT. OF PUBLIC WORKS, COUNTY OF KAUAI
N.A.
MANAGER & CHIEF ENGINEER, DEPT. OF WATER, COUNTY OF KAUAI

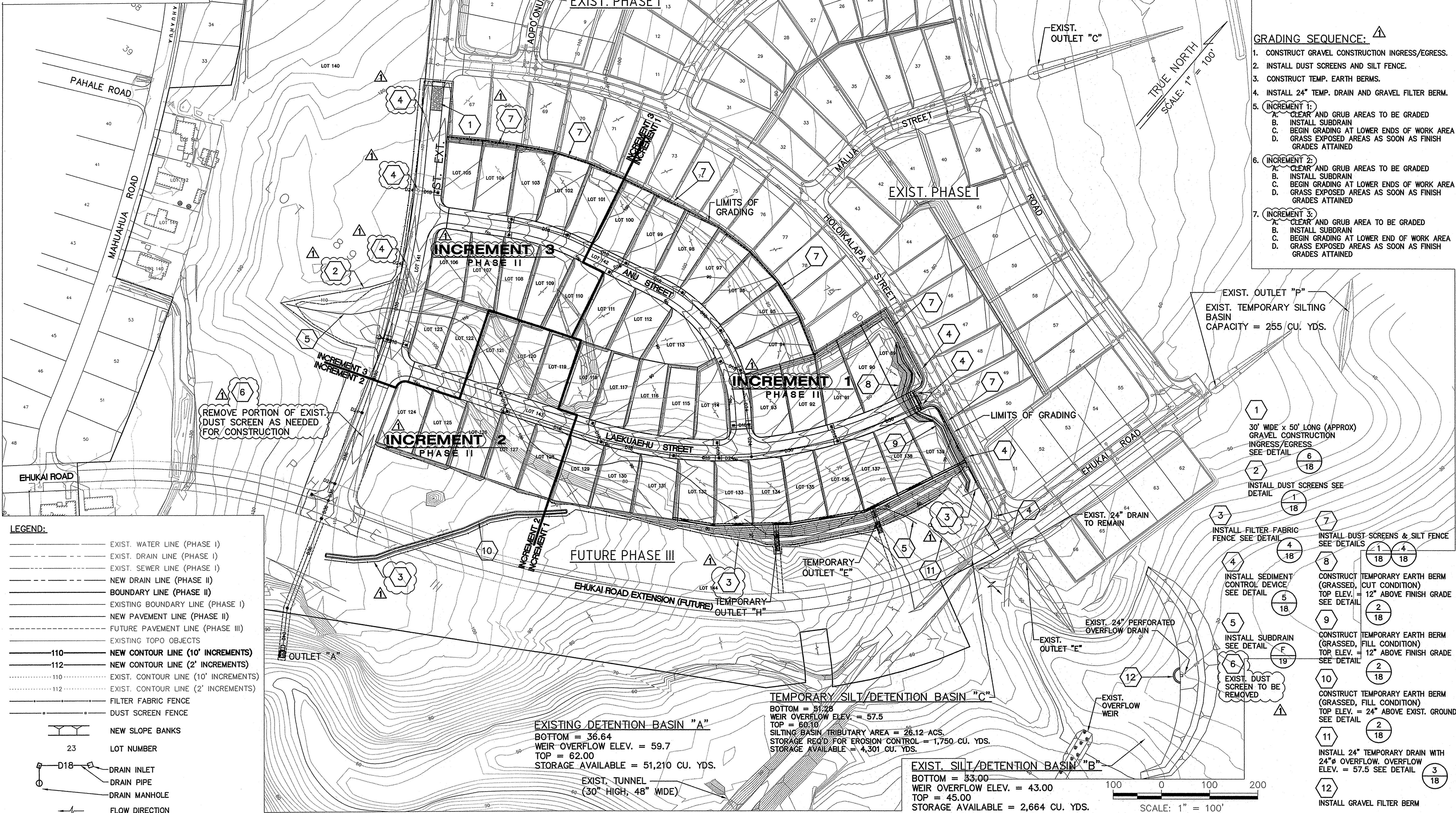
DESIGNED BY: WW	SHEET
DRAWN BY: CG	C-10
DATE: 03/27/12	10 OF 44 SHEETS

- LEGEND:**
- EXIST. TOPO OBJECTS
 - EXIST. WATER LINE (PHASE I)
 - EXIST. DRAIN LINE (PHASE I)
 - EXIST. SEWER LINE (PHASE I)
 - NEW PAVEMENT LINE (PHASE II)
 - FUTURE PAVEMENT LINE (PHASE III)
 - NEW CENTER LINE ROAD
 - NEW WATER LINE (PHASE II)
 - NEW DRAIN LINE (PHASE II)
 - NEW SEWER LINE (PHASE II)
 - 110- NEW CONTOUR LINE (10' INCREMENTS)
 - 112- NEW CONTOUR LINE (2' INCREMENTS)
 - 110- EXIST. CONTOUR LINE (10' INCREMENTS)
 - 112- EXIST. CONTOUR LINE (2' INCREMENTS)
 - NEW BOUNDARY LINE (PHASE II)
 - EXISTING BOUNDARY LINE (PHASE I)
 - DRAWING MATCH LINE



Project No: 11-157
Drawing No: 11-157 CON.dwg

- NOTES:
1. GRADING SHALL BE DONE IN NUMERICAL INCREMENTS SPECIFIED. BEFORE INITIATING THE NEXT GRADING INCREMENT, THE GRASSING FOR THE PRIOR INCREMENT SHALL BE ESTABLISHED (BARE SPOTS SHALL NOT EXCEED ONE SQUARE FOOT) AND PERMISSION MUST BE OBTAINED FROM THE CONSTRUCTION INSPECTION SECTION, DIVISION OF ENGINEERING, DEPARTMENT OF PUBLIC WORKS.
 2. INSTALL SEDIMENT CONTROL DEVICE FOR NEW GRATED INLETS. REMOVE UPON APPROVAL FROM THE CONSTRUCTION INSPECTION SECTION, DIVISION OF ENGINEERING, DEPT. OF PUBLIC WORKS.
 3. CONTRACTOR SHALL PROVIDE MAINTENANCE OF PROJECT SILTING BASINS AFTER STORM EVENTS SO THAT REQUIRED CAPACITIES ARE MAINTAINED.



INCREMENT 1 GRADING TOTALS			
GRADED AREA	EMBANKMENT	EXCAVATION	NET VOLUME
9.25 ACRES	43,331 CU.YDS.	64,392 CU.YDS.	21,061 CU.YDS. (CUT)

INCREMENT 2 GRADING TOTALS			
GRADED AREA	EMBANKMENT	EXCAVATION	NET VOLUME
2.38 ACRES	19,931 CU.YDS.	2,981 CU.YDS.	16,950 CU.YDS. (FILL)

INCREMENT 3 GRADING TOTALS			
GRADED AREA	EMBANKMENT	EXCAVATION	NET VOLUME
4.89 ACRES	19,574 CU.YDS.	12,017 CU.YDS.	7,557 CU.YDS. (FILL)

OVERALL GRADING TOTALS			
GRADED AREA	EMBANKMENT	EXCAVATION	NET VOLUME
16.52 ACRES	82,836 CU.YDS.	79,390 CU.YDS.	3,446 CU.YDS. (FILL)

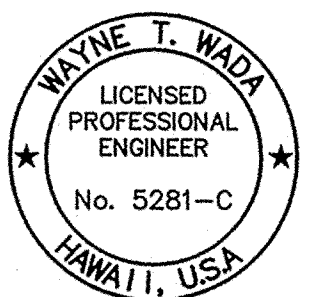
- GRADING SEQUENCE:
1. CONSTRUCT GRAVEL CONSTRUCTION INGRESS/EGRESS.
 2. INSTALL DUST SCREENS AND SILT FENCE.
 3. CONSTRUCT TEMP. EARTH BERMS.
 4. INSTALL 24" TEMP. DRAIN AND GRAVEL FILTER BERM.
 5. INCREMENT 1:
 - A. CLEAR AND GRUB AREAS TO BE GRADED
 - B. INSTALL SUBDRAIN
 - C. BEGIN GRADING AT LOWER ENDS OF WORK AREA
 - D. GRASS EXPOSED AREAS AS SOON AS FINISH GRADES ATTAINED
 6. INCREMENT 2:
 - A. CLEAR AND GRUB AREAS TO BE GRADED
 - B. INSTALL SUBDRAIN
 - C. BEGIN GRADING AT LOWER ENDS OF WORK AREA
 - D. GRASS EXPOSED AREAS AS SOON AS FINISH GRADES ATTAINED
 7. INCREMENT 3:
 - A. CLEAR AND GRUB AREA TO BE GRADED
 - B. INSTALL SUBDRAIN
 - C. BEGIN GRADING AT LOWER END OF WORK AREA
 - D. GRASS EXPOSED AREAS AS SOON AS FINISH GRADES ATTAINED

ESAKI
SURVEYING AND
MAPPING, INC.

1610 Halekuna Street
Lihu'e, Kaua'i, Hawai'i 96766
Ph. (808) 246-0625 Fax (808) 246-0229

• CIVIL ENGINEERS • SURVEYORS • PLANNERS

REVISION	DATE	DESCRIPTION	BY	APPROVED
6-20-12		REVISED EROSION CONTROL PLAN	WW	



THIS WORK WAS PREPARED
BY ME OR UNDER MY SUPERVISION

Wayne T. Wada
EXPIRES: APRIL 30, 2014

PILI MAI KE KAI SUBDIVISION
PHASE II

Anahola, Kaua'i, Hawai'i

Tax Map Key: (4) 4-8-16: 03
(4) 4-8-22: 89

Developer/Owner:
Department of Hawaiian Home Lands
91-5420 Kapolei Parkway
Kapolei, HI 96707

EROSION CONTROL PLAN

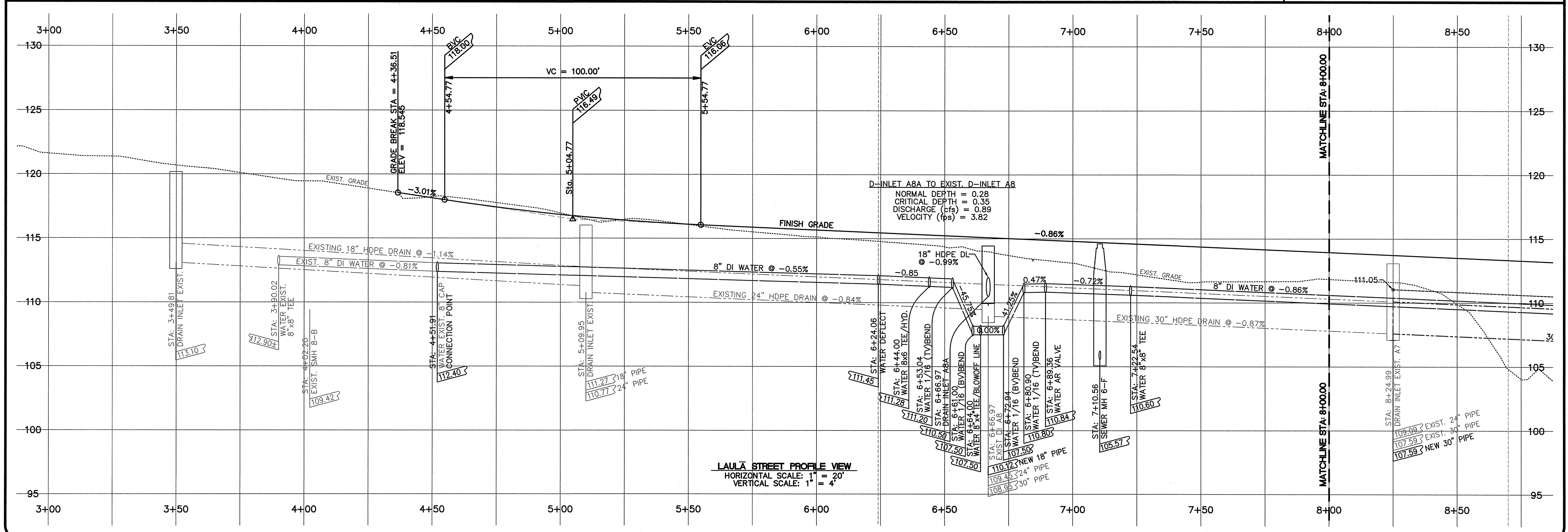
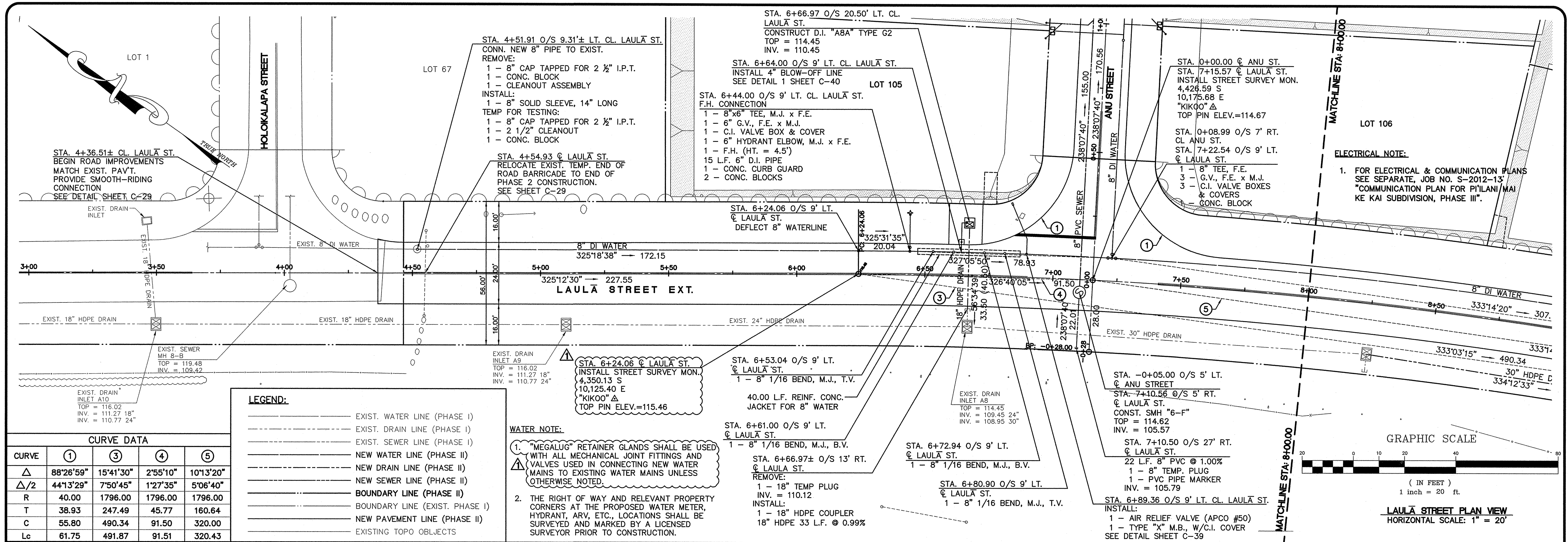
APPROVED:

COUNTY ENGINEER, DEPT. OF PUBLIC WORKS,
COUNTY OF KAUAI

N.A.
MANAGER & CHIEF ENGINEER, DEPT. OF WATER,
COUNTY OF KAUAI

DESIGNED BY: WW
DRAWN BY: CG
DATE: 03/27/12

SHEET
C-17
17 OF 44 SHEETS



ESAKI
SURVEYING AND
MAPPING, INC.
1610 Halekuanā Street
Līhū'e, Kaua'i, Hawai'i 96766
Ph. (808) 246-0625 Fax (808) 246-0229

CIVIL ENGINEERS • SURVEYORS • PLANNERS

REVISION	DATE	DESCRIPTION	BY	APPROVED
6-20-12		PLAN & PROFILE REVISIONS	WW	

REVISIONS

WAYNE T. WADA
LICENSED
PROFESSIONAL
ENGINEER
No. 5281-C
HAWAII, U.S.A.

THIS WORK WAS PREPARED
BY ME OR UNDER MY SUPERVISION

Wayne T. Wada
EXPIRES: APRIL 30, 2014

**PILANI MAI KE KAI SUBDIVISION
PHASE II**
Anahola, Kaua'i, Hawai'i
Tax Map Key: (4) 4-8-16: 03
(4) 4-8-22: 89
Developer/Owner:
Department of Hawaiian Home Lands
91-5420 Kapolei Parkway
Kapolei, HI 96707

**PLAN & PROFILE
LAULA STREET**

APPROVED:

COUNTY ENGINEER, DEPT. OF PUBLIC WORKS, COUNTY OF KAUAI	DATE
MANAGER & CHIEF ENGINEER, DEPT. OF WATER, COUNTY OF KAUAI	DATE

DESIGNED BY: WW	SHEET C-20 20 OF 44 SHEETS
DRAWN BY: CG	
DATE: 03/27/12	

Project No: 11-157
Drawing No: 11-157CON.dwg