

THE ROAD AHEAD: *DHHL & The Next Two Years*

OHA Board of Trustees &
Hawaiian Homes
Commission
Joint Meeting
October 9, 2012



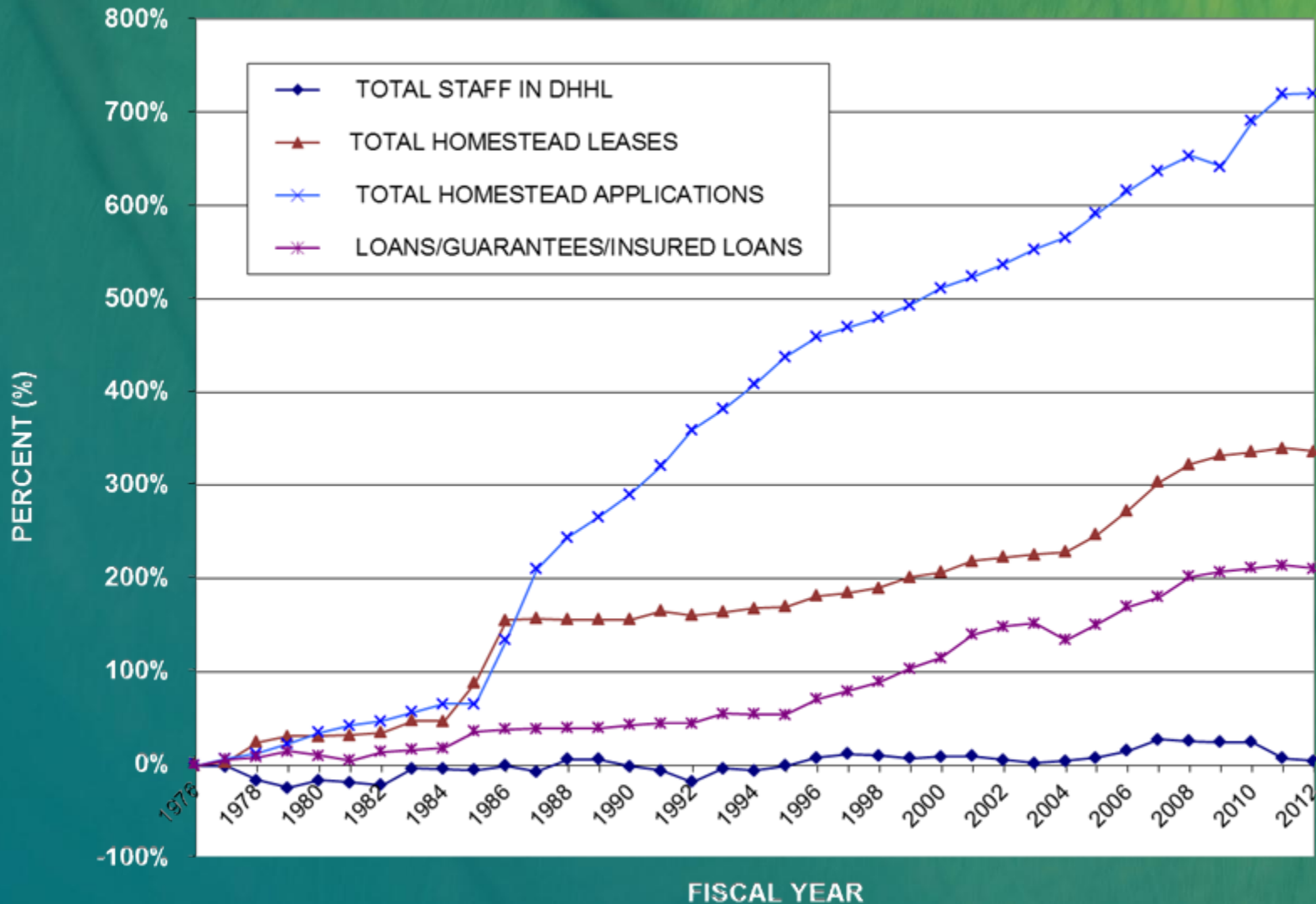
Today's Discussion

- Current state of affairs
- Areas of focus

Current State of Affairs

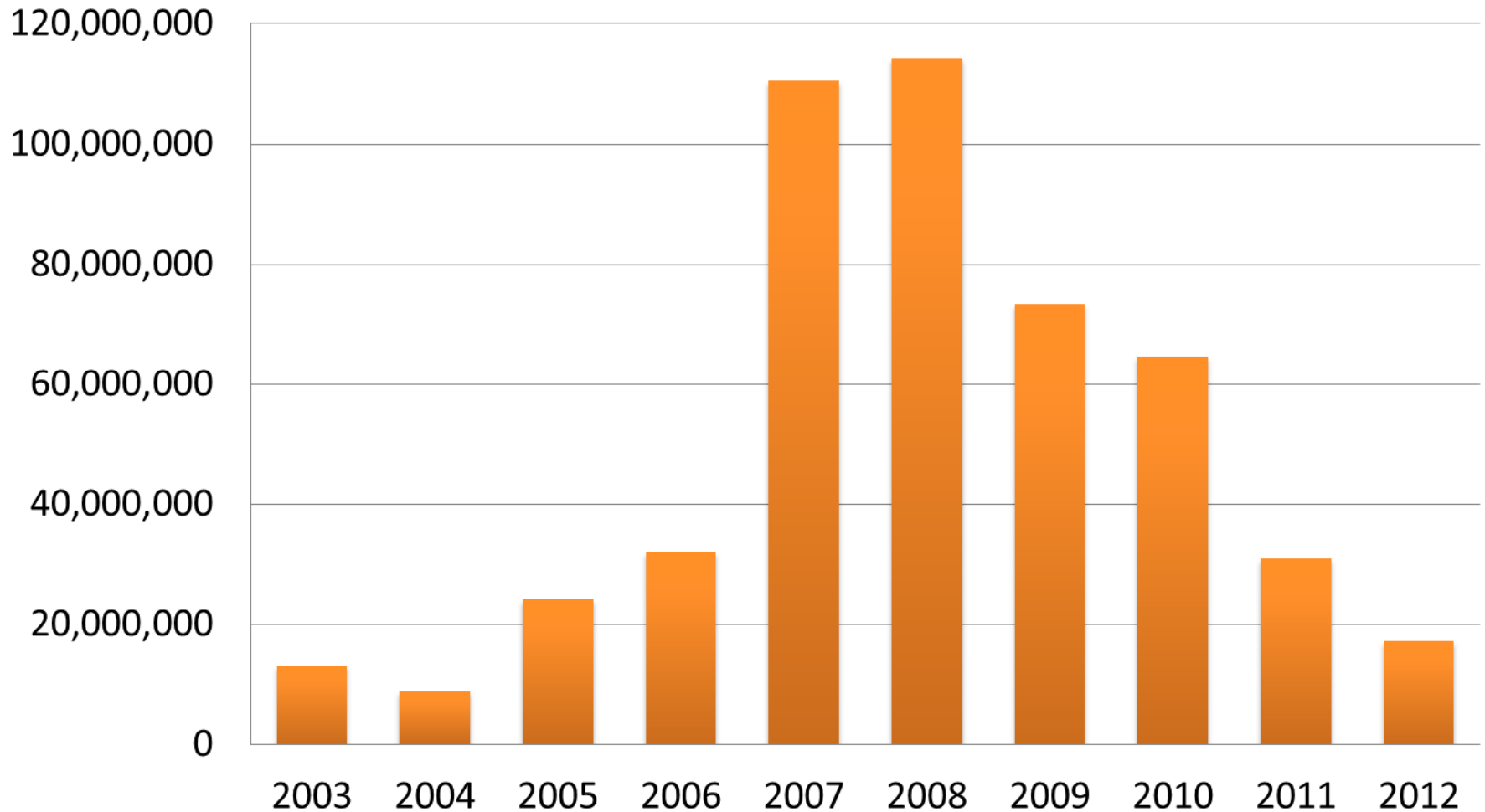
- Growing needs: applicants and lessees
- Increase in demand for services, no growth in staffing
- High level of expenditures in past 10 years
- Uncertainty of future revenue/resources
 - Settlement payments end 2015
- Decrease in Native Hawaiian Rehabilitation Fund resources

DHHL Staffing and Workload



Act 14 Trust Fund Expenditures

HHL Trust Fund Expenditures



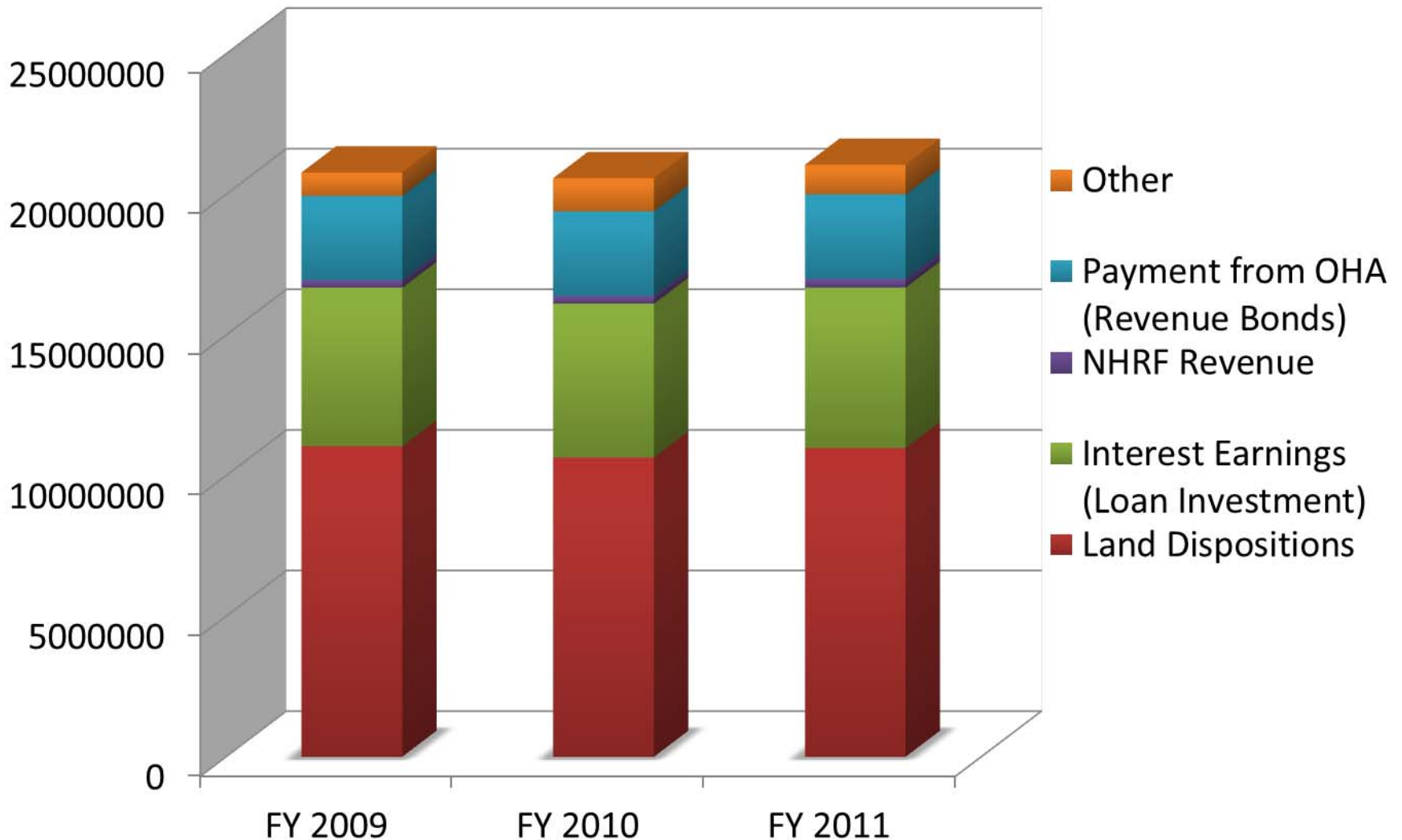
Trust Fund: Going Forward

	FY 2013	FY 2014	FY 2015
Carry Forward Avail Balance**	109.6 M	95.1M	95.1
Budget	44.5M	Say 30M	Say 30 M
Revenue	30M	30M	15M
Ending Balance	95.1M	95.1M	80M

**** Available Balance = Ending Balance - Encumbrances**

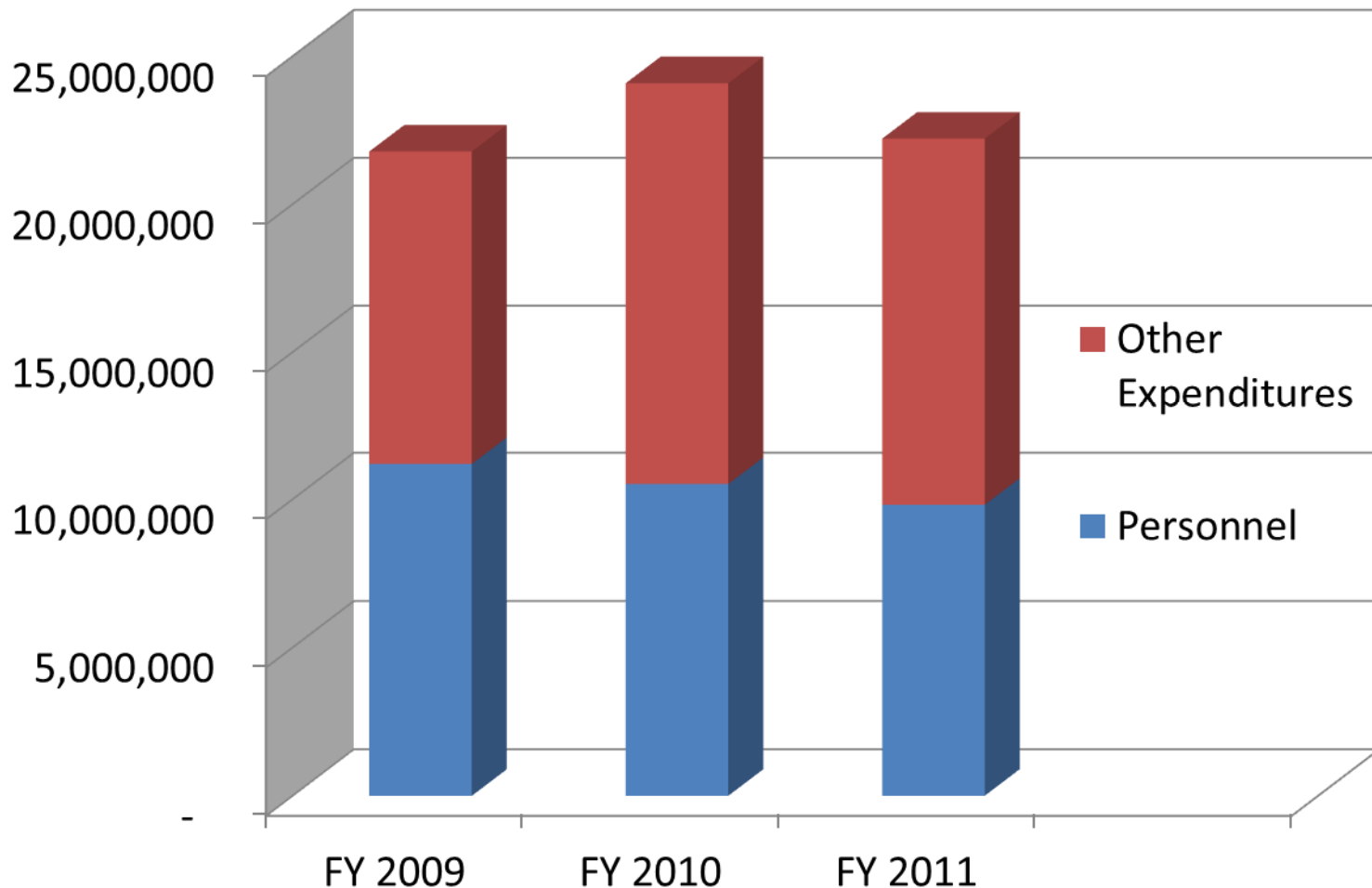
Actual Cash Receipts

Operating & Administrative, 2009-2011



Actual Expenditures & Encumbrances

Operation & Administrative, 2009-2011

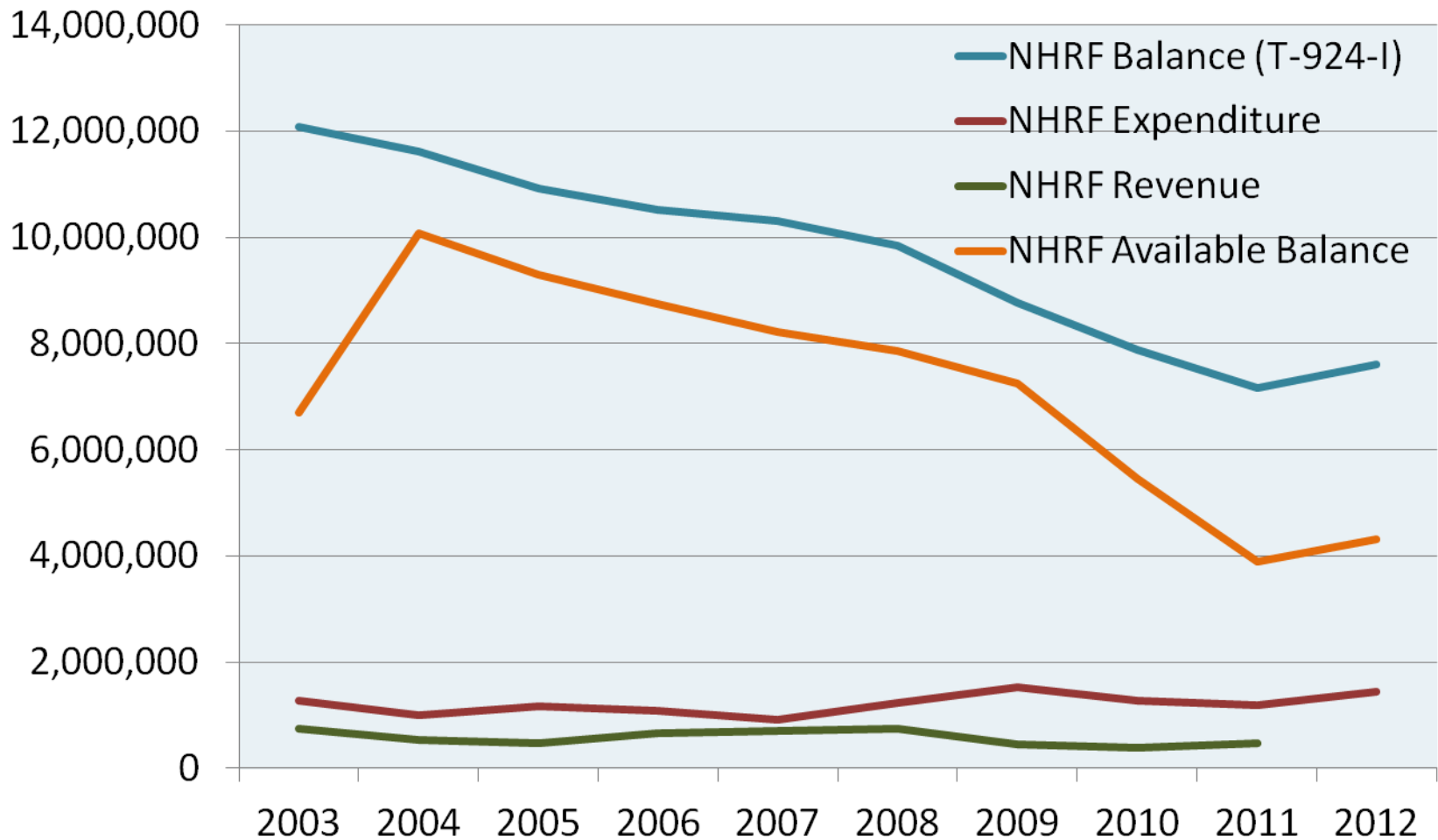


Actual Cash Receipts & Expenditures

Operating & Administrative, 2009-2011

	FY 2009	FY 2010	FY 2011
Cash Receipts	\$ 20,780,564	\$ 20,578,731	\$ 21,053,469
Expenditures	21,784,573	24,091,796	22,217,375
Delta	-1,004,009	-3,513,065	-1,163,906

Native Hawaiian Rehabilitation Fund



Areas of focus

- Stabilize financing and improve servicing
- Affordability
- Support community
- Agriculture
- Natural resources

Area 1: Stabilize Financing

- At the Legislature
 - Nelson – “sufficient” funding for administrative and operating expenses
 - Increase awareness of constitutional obligation for program for CIP and loan resources
- Increase performance of trust assets
 - Land (start planning with HHC)
 - Assess Native Hawaiian preferences for income production
 - Financial (cash balances) – higher earning investment (moderately/conservative)
- Address risk of our loan portfolio (BIG issue)
- Fixed costs
 - Sub-lease office space (1.7M)/ refinance HHFDC debt (2.2 M)

Area 1: Improve Servicing

- Tools to improve how we provide service
- MIX OF IDEAS
 - Website ; You Tube videos; to improve ability to “self-service” lessee requests
 - Assess client servicing – intake, referral, follow up to see if efficiencies are possible
 - Develop community Resource People

Area 2: Affordability

- Aggressively address affordability of homesteading -- MIX OF IDEAS
 - Basic homes with lower price tags; partnerships
 - Creative financing programs through NAHASDA
 - Revamp HOAP -- priority on undivided interest lessees
 - Revisit “old” ideas – owner/builder
 - Explore new ideas – community support with volunteer skilled labor (where appropriate)

Area 3: Support Community

- A LOT happening out in your communities – proactively seeking solutions
- Technical Assistance
 - Associations at various levels of capacity
- 21 land dispositions to community-based orgs
 - How to move Community/Econ Dev projects to next level (given less \$ @ DHHL)?
 - OHA support?

Area 4: Agriculture

- Now is the time to really assess
- Must partner with DOA (DHHL 1 staff – planner not farmer)
- Where to start
 - Existing lessees not farming?
 - Why? Services to assist? Intentions? Enforcement
 - Or
 - New program /awards?
 - What do we do differently

Area 5: Natural Resources

- Energy Policy (Revision)
- Water Policy (New)
- Both important; community to review policies and engage during Beneficiary Consultation process

Key Development Projects





HAWAIIAN HOME LANDS
HAWAIIAN HOMES COMMISSION
DEPARTMENT OF HAWAIIAN HOME LANDS

ISLAND OF OAHU

EAST KAPOLEI I

EAST KAPOLEI II

LUALUALEI SUBDIVISION

KAKAINA SUBDIVISION



H-1 Freeway

Ho'opili

University of Hawaii
West Oahu

Former Pesticide
Mixing and Loading
Plant

East
Kapolei II

Future Rail
Station

Detention Basin

Kapolei
Golf Course

Kroc
Community
Center

East-West Road

Ko'olua'ula Multi-
family Housing

Kānehiki

Kipuka

Hale
Kalaniana'ole

Commercial

HED

KCDC

Ewa Villages
Golf Course



Ka Makana Ali'i

Kanehili (East Kapolei I)



University of Hawaii,
West Oahu

East Kapolei II

Kapolei Golf
Course

Sound/Safety Wall

DHHL

HFD

Ewa Villages
Golf Course

Ka Makana Ali'i

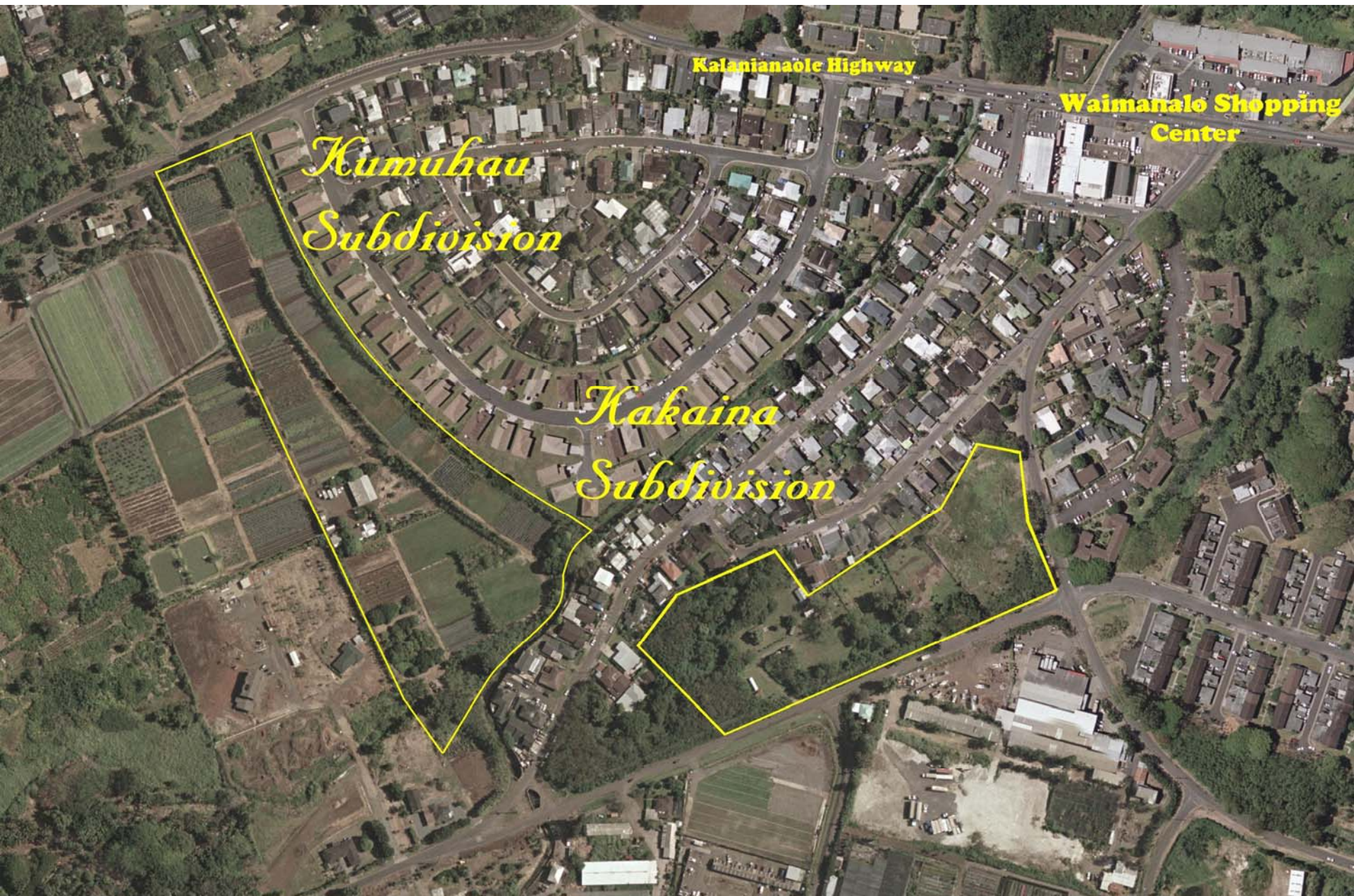
East Kapolei II, Oahu



LUALUALEI SUBDIVISION



Kakaina Subdivision





HAWAIIAN HOME LANDS

HAWAIIAN HOMES COMMISSION
DEPARTMENT OF HAWAIIAN HOME LANDS

ISLAND OF HAWAII

Maku'u Mauka Off-Site Water System

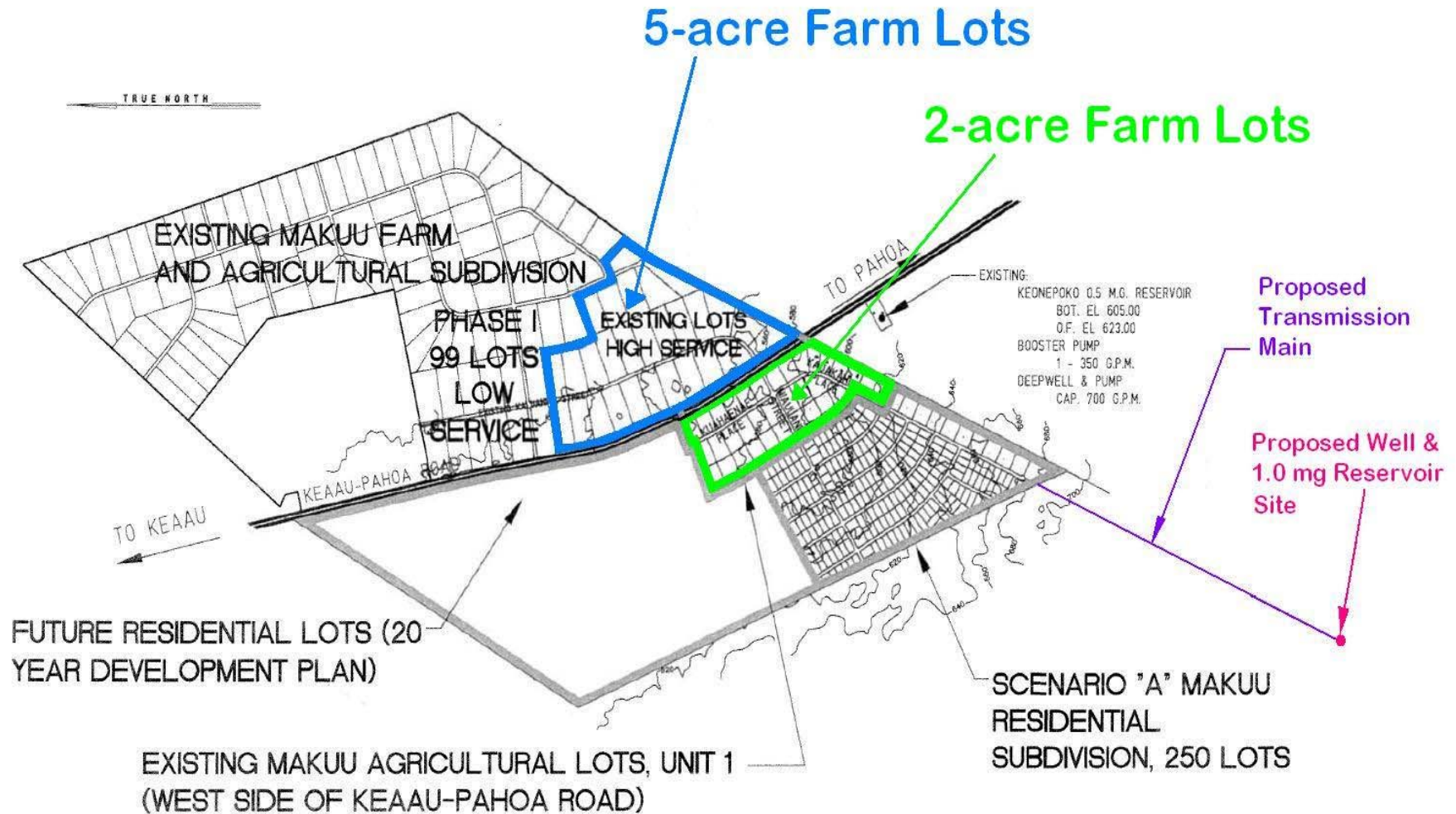
Villages of La'i 'Ōpua

Lālāmilo Development

Pu'ukapu Hybrid Water System

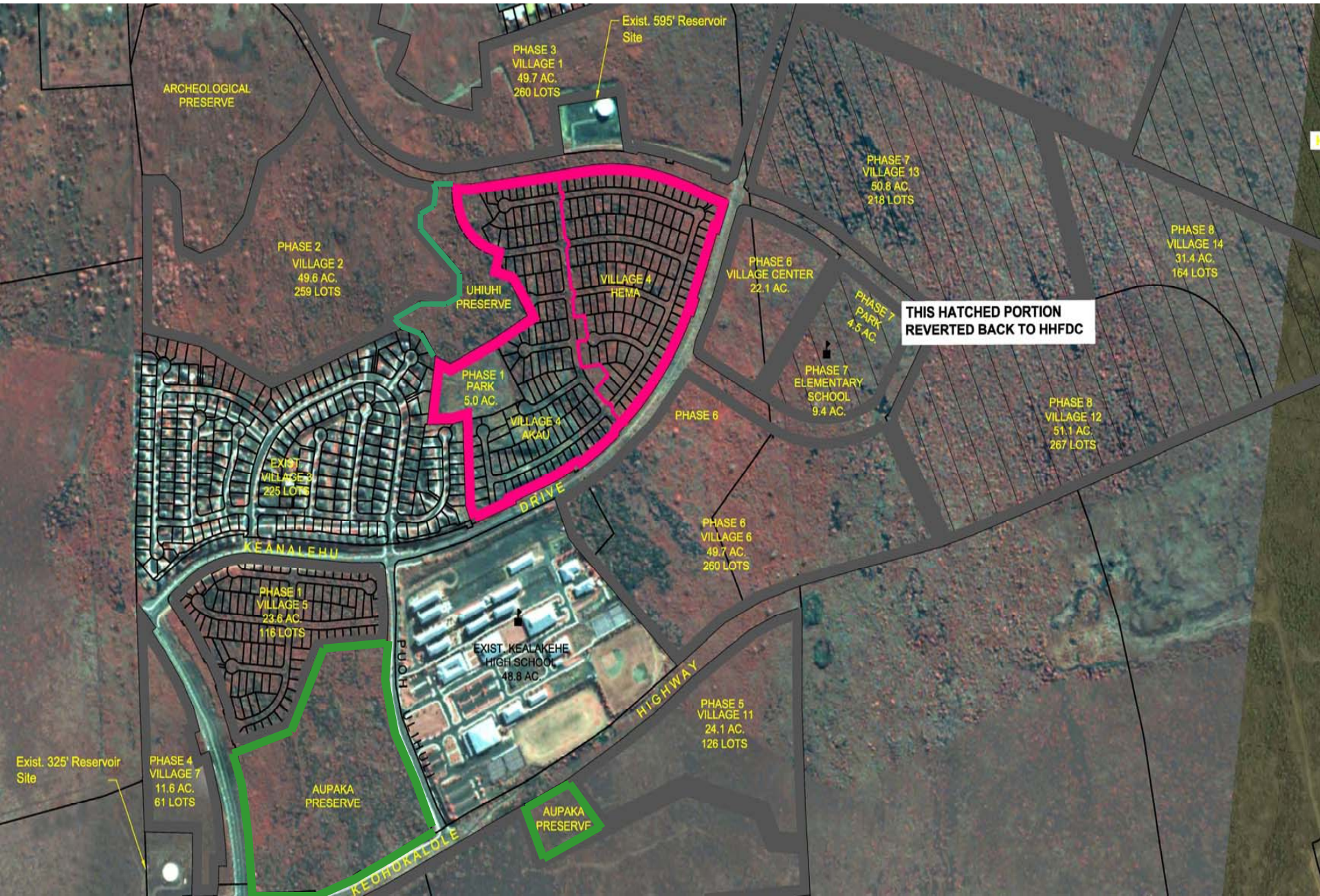
Ka'ū Water Assessment Study

Maku'u Mauka Off-Site Water System

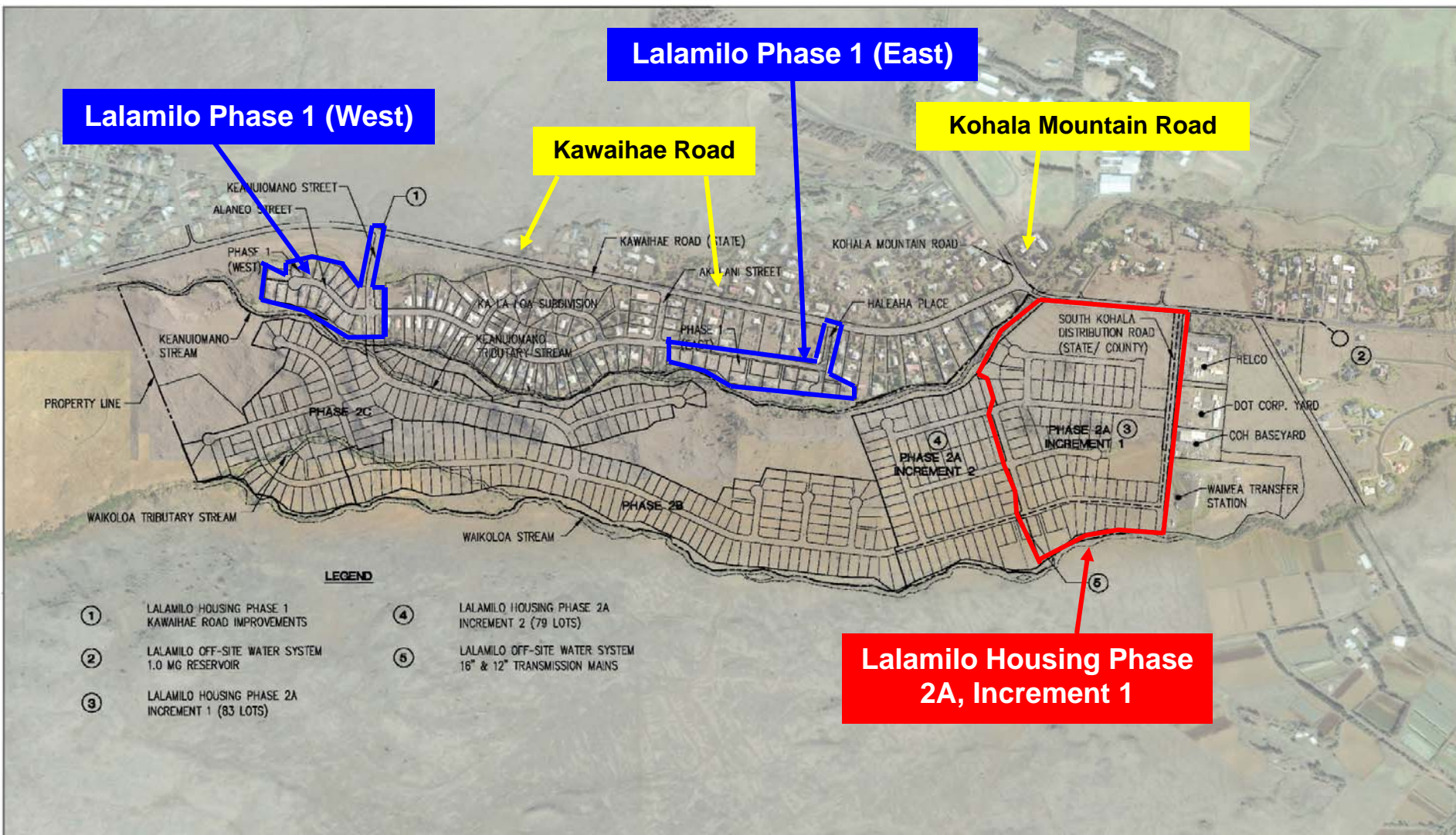


LOCATION MAP
TMK: 3RD DIV. 1-5-8: 1 AND 1-5-8: 3

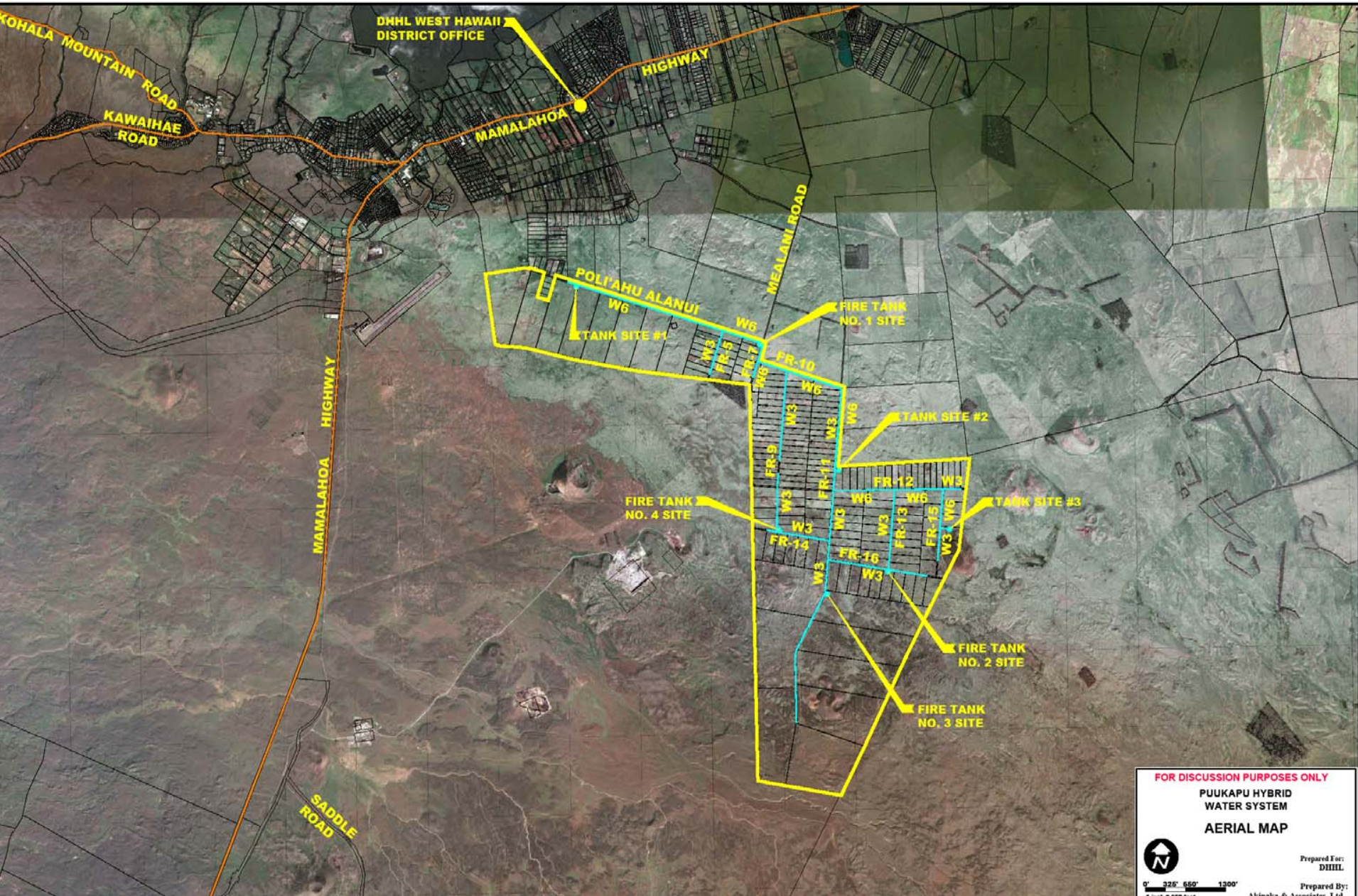
LAIOPUA VILLAGE 4 & 5 PRESERVES



Lalamilo Phase 2A, Increment I & Off-Site Water



Puukapu Hybrid Water System



FOR DISCUSSION PURPOSES ONLY
PUUKAPU HYBRID
WATER SYSTEM
AERIAL MAP

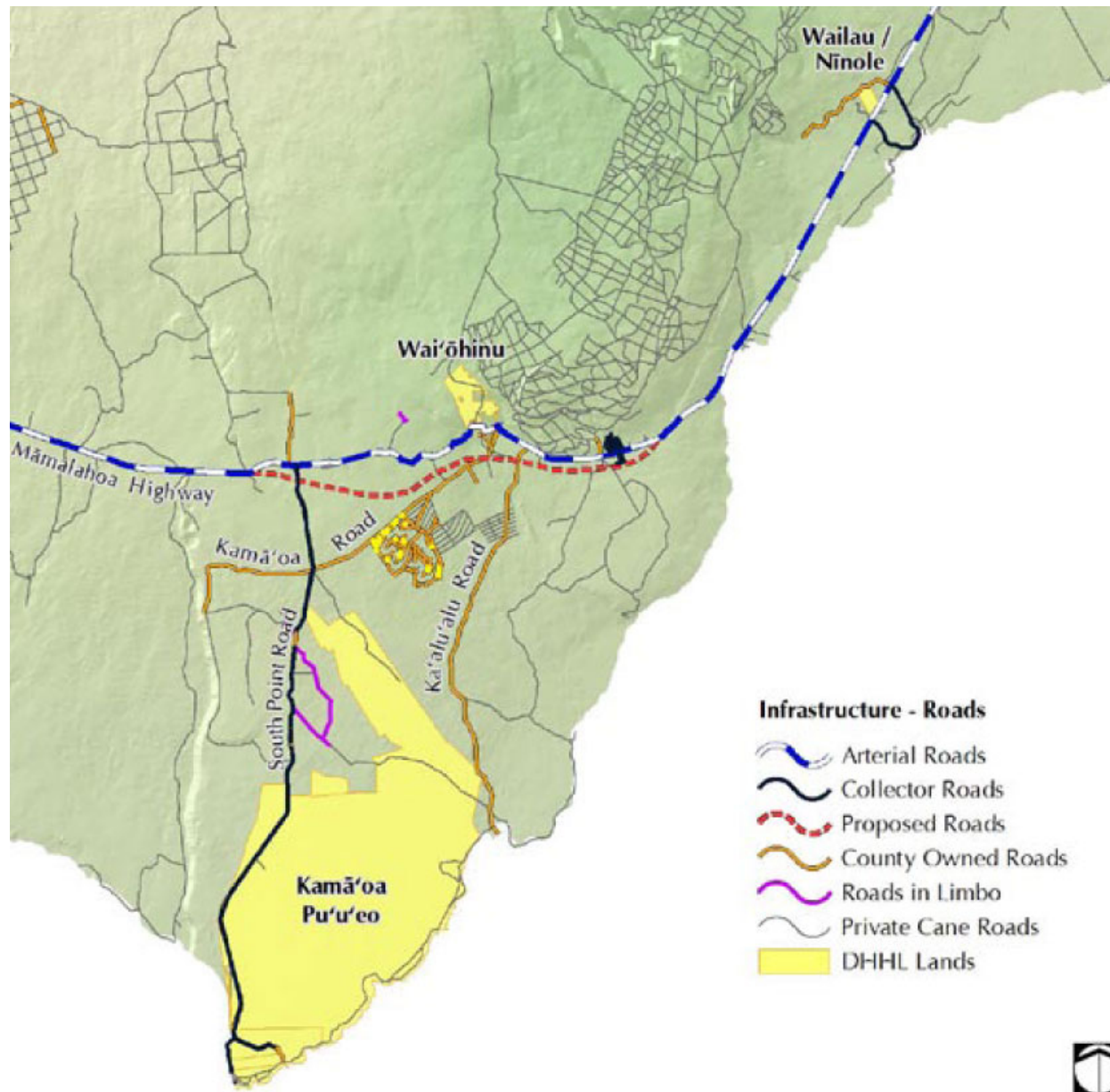


0' 250' 500' 1000'

Prepared For:
DHHL

Prepared By:
Akiyoshi & Associates, Inc.

Ka'ū Water Assessment Study





HAWAIIAN HOME LANDS

HAWAIIAN HOMES COMMISSION
DEPARTMENT OF HAWAIIAN HOME LANDS

ISLAND OF MAUI

KEOKEA-WAIOHULI PHASE 1

MAUI SCATTERED LOTS

LOWER KULA OFF-SITE WATER

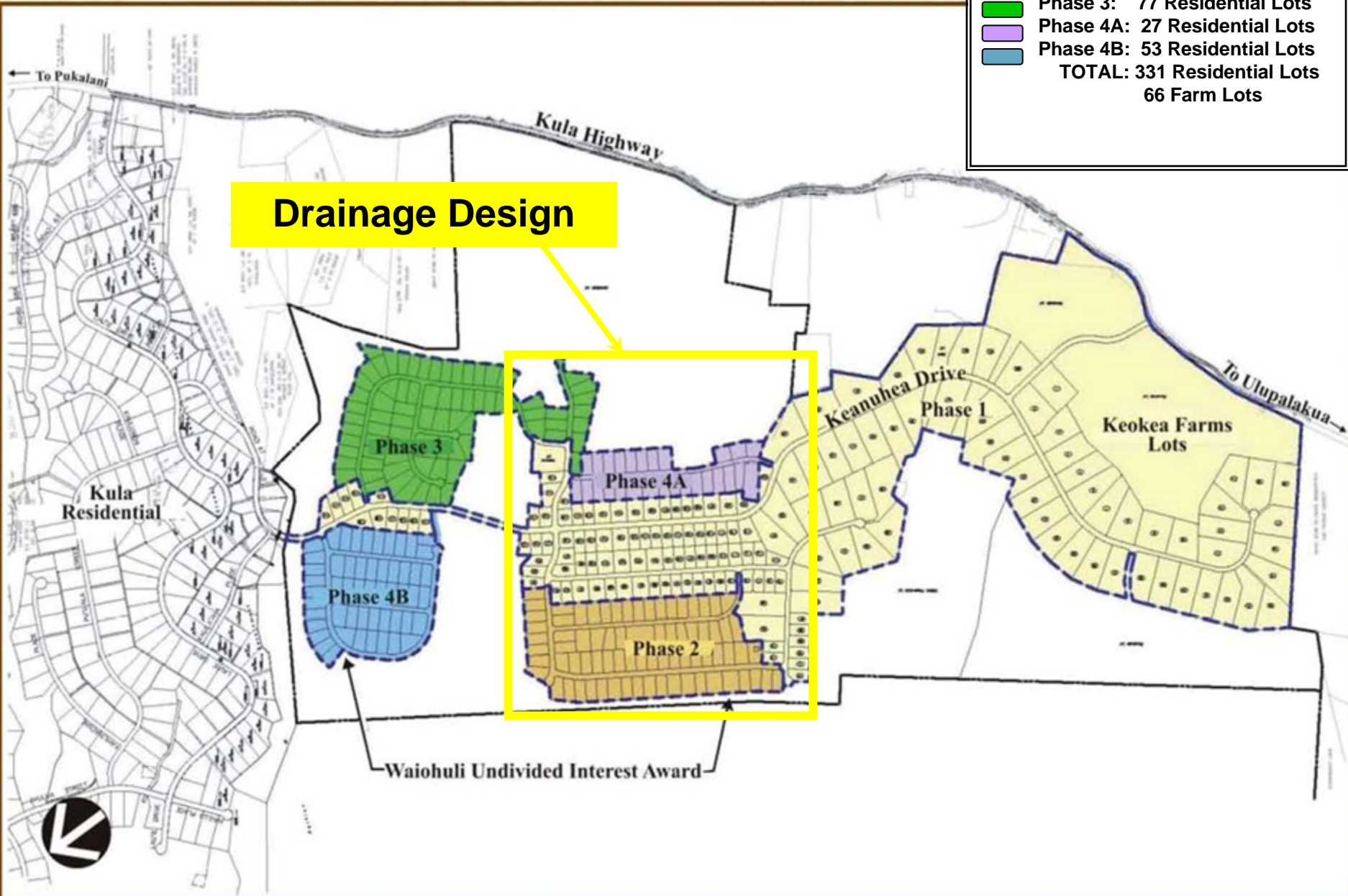
LEIALII 1A & 1B

MOLOKAI WATER SYSTEM IMPROVEMENT DESIGN

LANAI RESIDENCE LOTS PH. 1 & 2A SUBDIVISIONS

- Phase 1: 98 Residential Lots
66 Farm Lots
- Phase 2: 76 Residential Lots
- Phase 3: 77 Residential Lots
- Phase 4A: 27 Residential Lots
- Phase 4B: 53 Residential Lots
- TOTAL: 331 Residential Lots
66 Farm Lots

Drainage Design



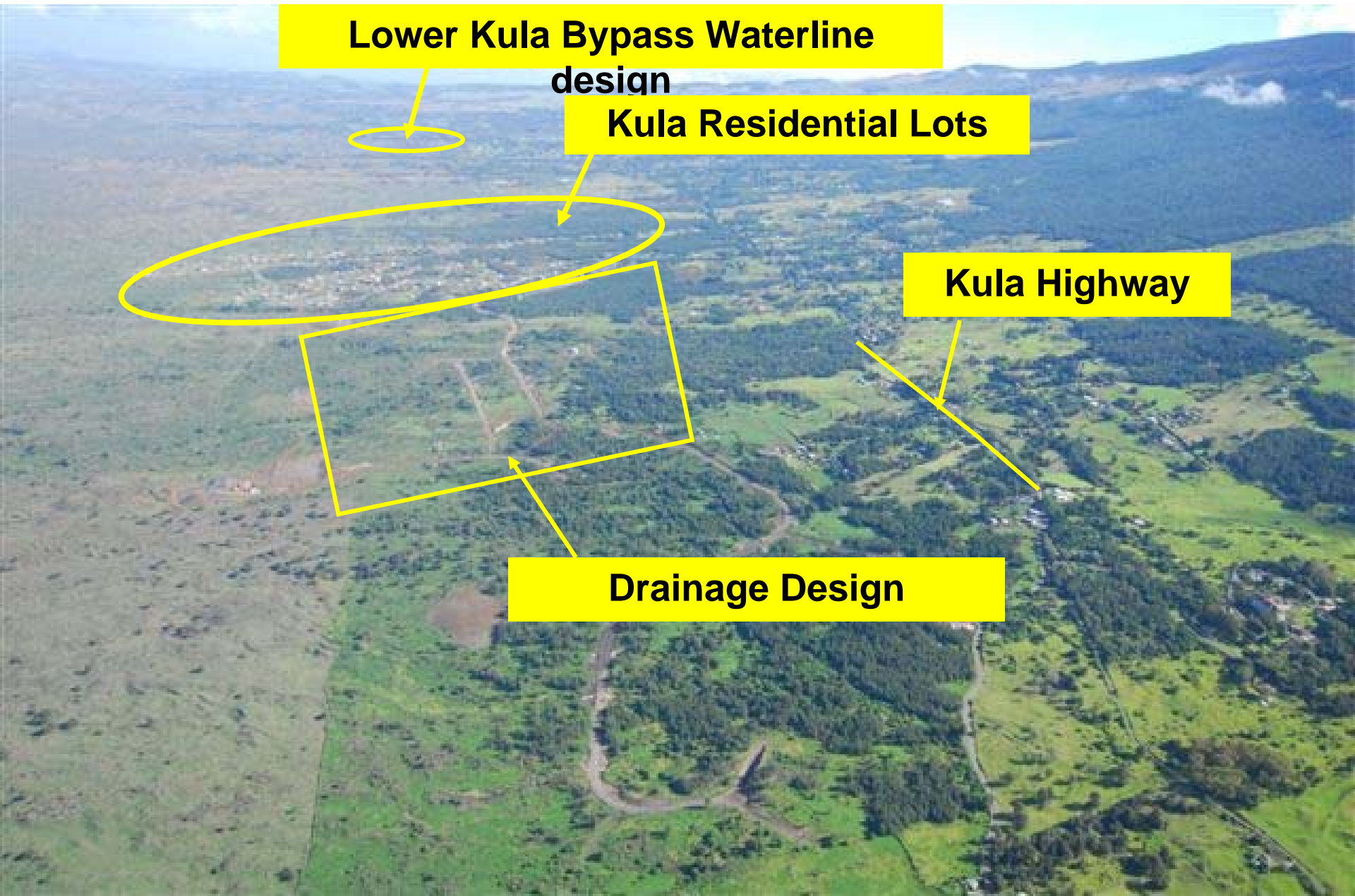
Keokea-Waiohuli Development

**Lower Kula Bypass Waterline
design**

Kula Residential Lots

Kula Highway

Drainage Design

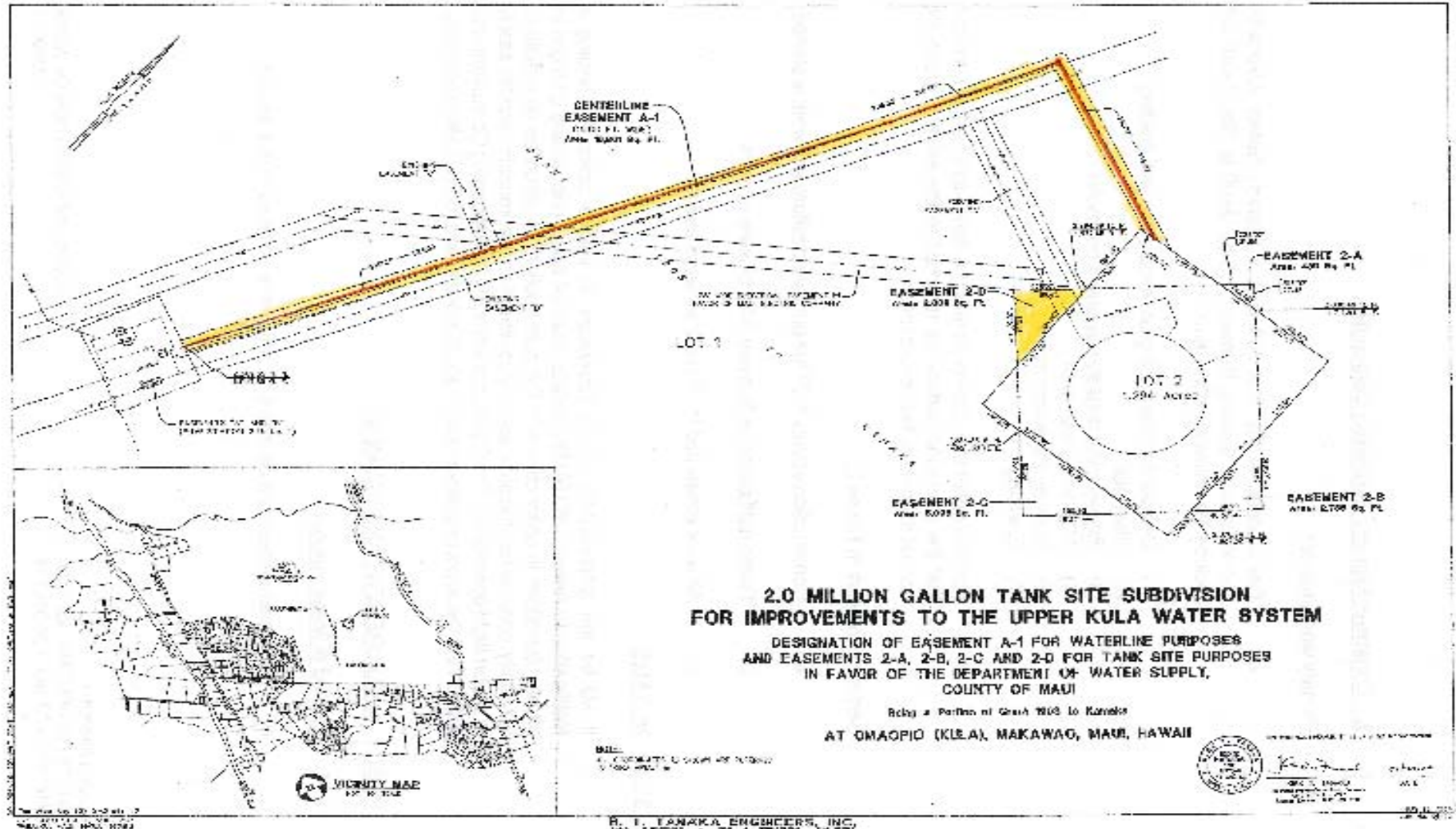


MAUI SCATTERED LOTS

(Waiohuli Undivided Interest Relocations to Kula Res.
Unit 1)



Lower Kula Bypass Waterline Design



Leialii 1A - Maui

Lahaina Civic Center

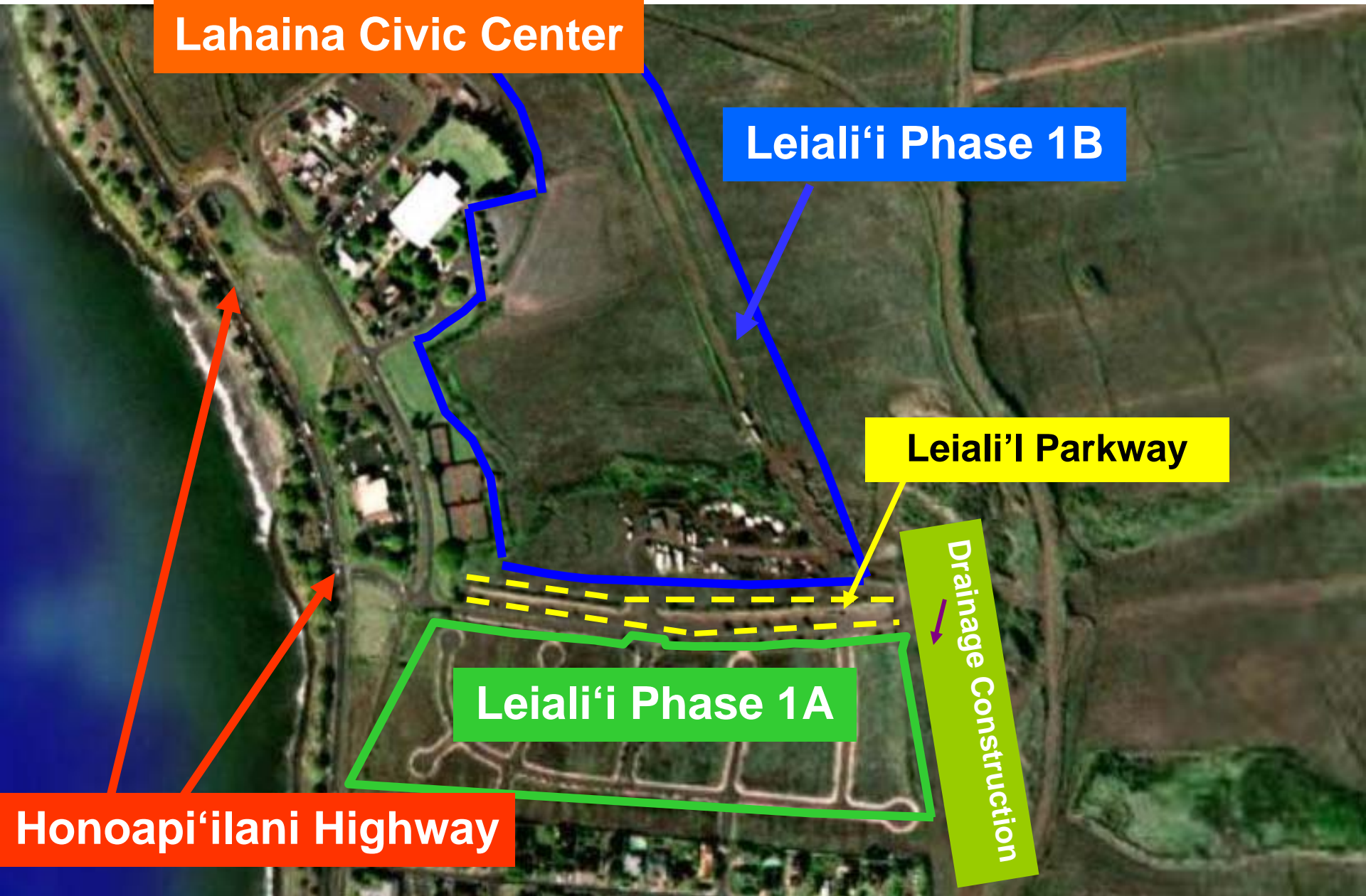
Leiali'i Phase 1B

Leiali'i Parkway

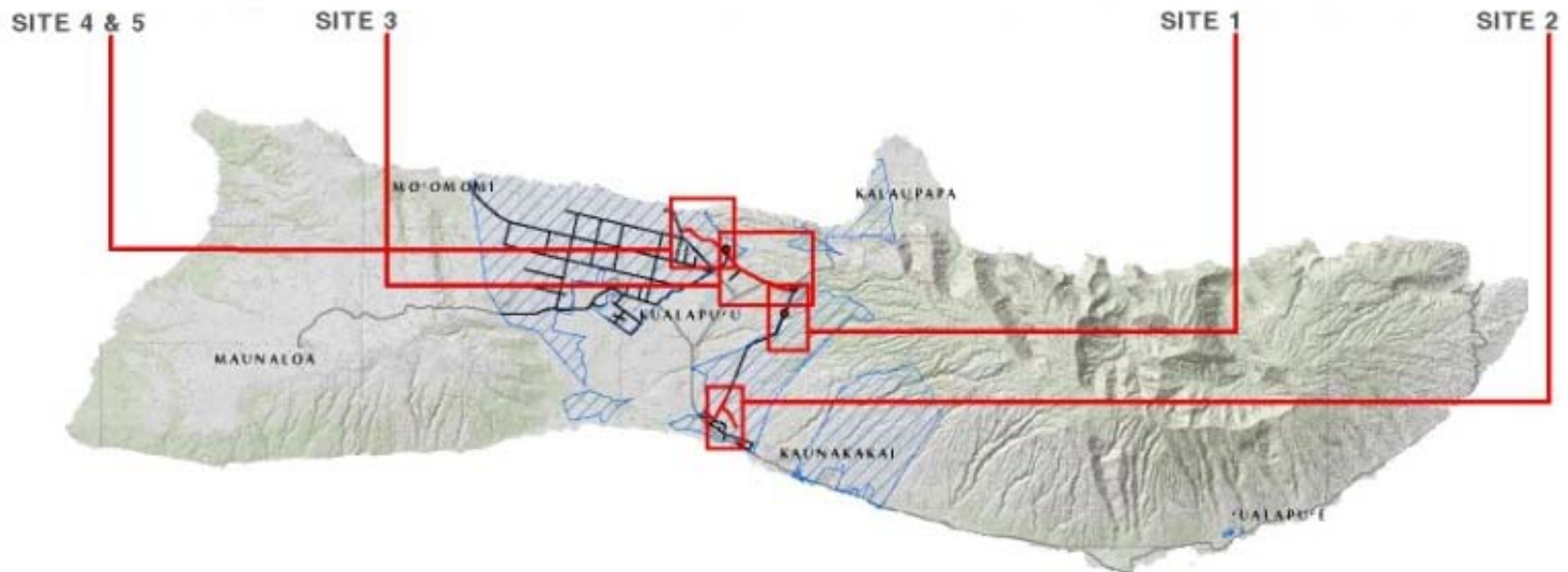
Drainage Construction

Leiali'i Phase 1A

Honoapi'ilani Highway

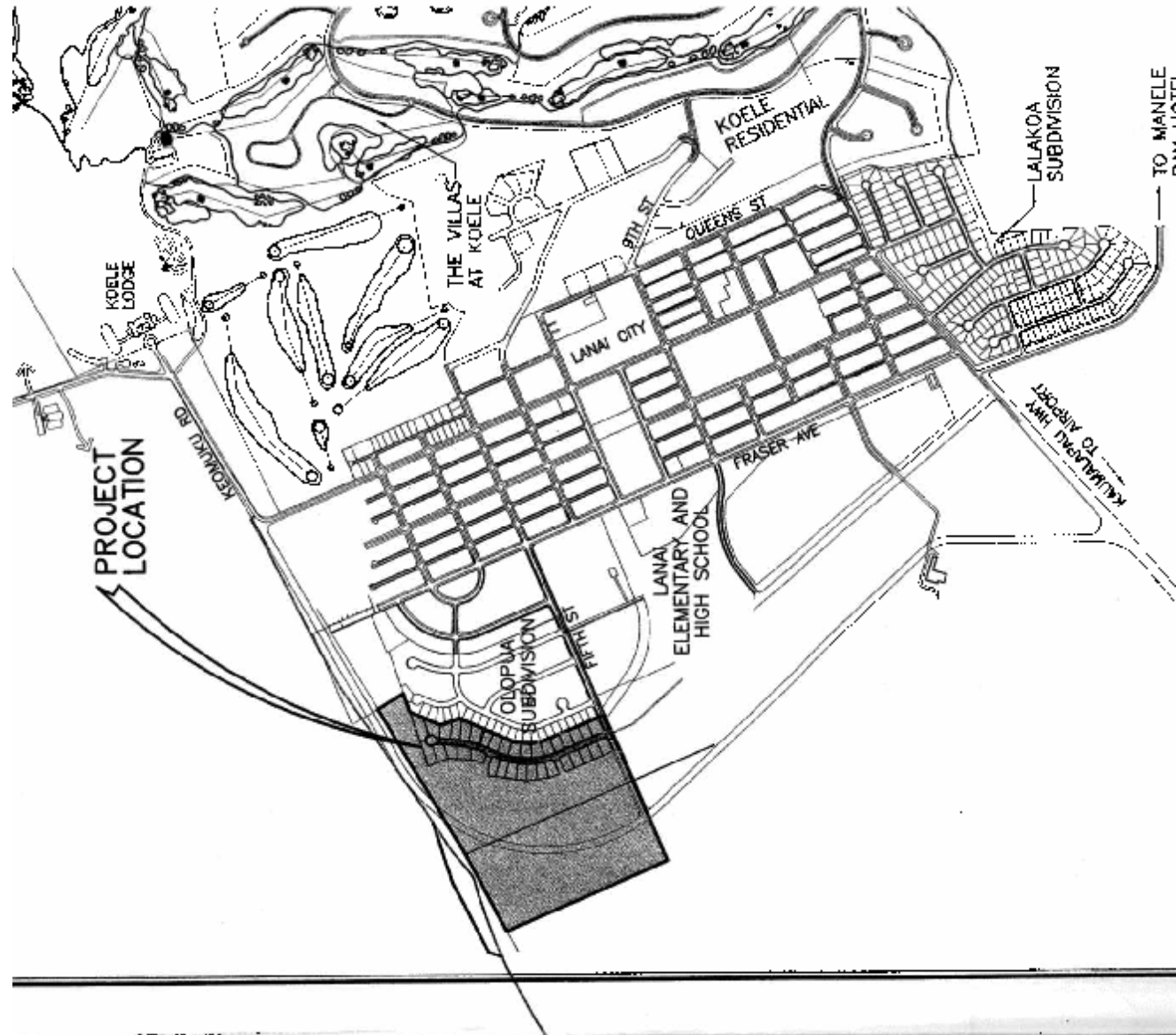


Molokai Water System



SITE 4 & 5

LANAI RESIDENCE LOTS





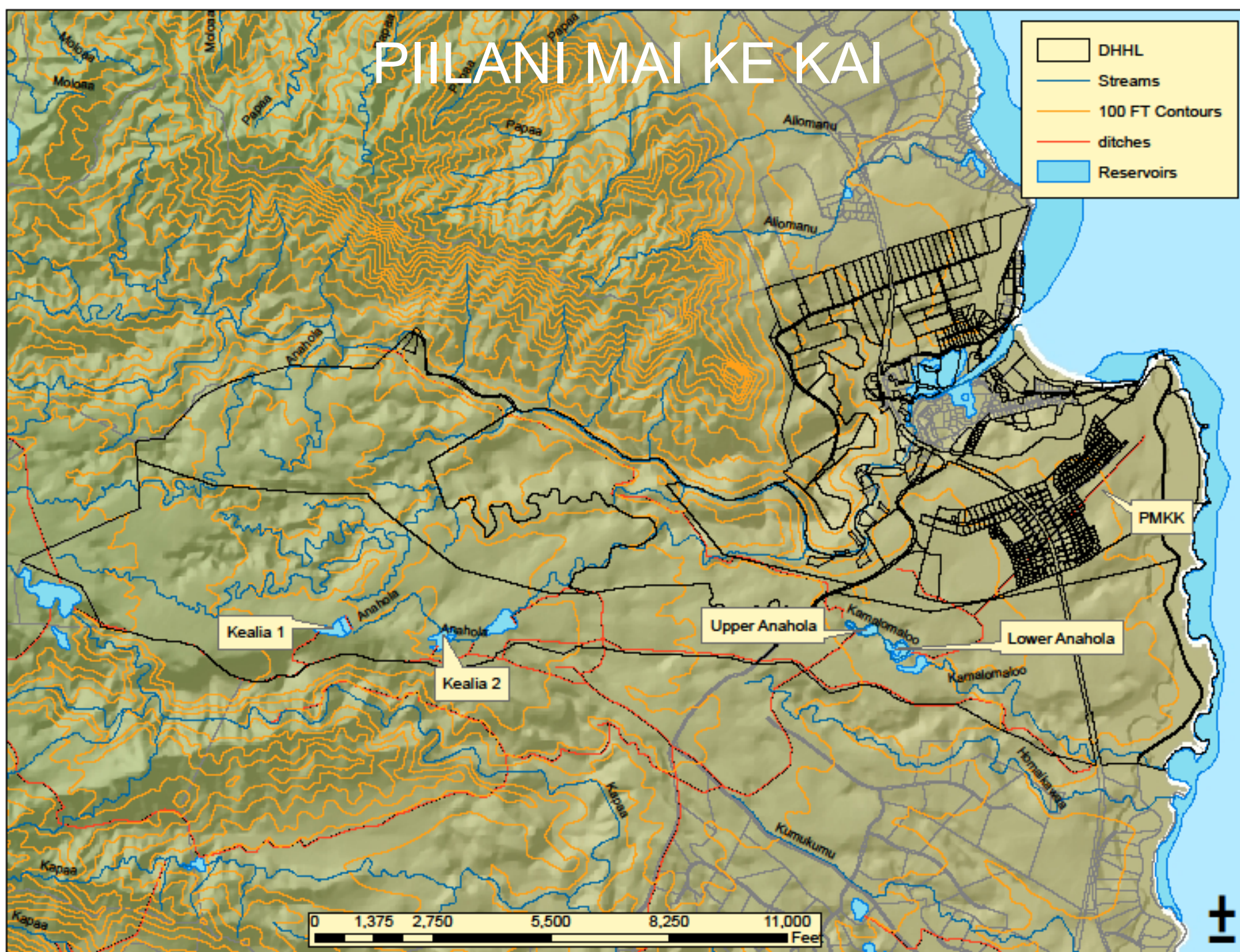
HAWAIIAN HOME LANDS

HAWAIIAN HOMES COMMISSION
DEPARTMENT OF HAWAIIAN HOME LANDS

ISLAND OF KAUAI

Pi'ilani Mai Ke Kai

PIILANI MAI KE KAI



PIILANI MAI KE KAI PHASE 2

