



HAWAIIAN HOME LANDS
HAWAIIAN HOMES COMMISSION
DEPARTMENT OF HAWAIIAN HOME LANDS

Maui Community Meeting

September 22, 2014

Paukūkalo Community Center



HAWAIIAN HOME LANDS
HAWAIIAN HOMES COMMISSION
DEPARTMENT OF HAWAIIAN HOME LANDS

DHHL Update



HAWAIIAN HOME LANDS
HAWAIIAN HOMES COMMISSION
DEPARTMENT OF HAWAIIAN HOME LANDS

Chair's Message

2014 Initiatives

Based on concerns brought to the Hawaiian Homes Commission, issues that emerged from various beneficiary consultation processes and concerns shared at community meetings, the department identified several initiatives of interest to our native Hawaiian beneficiaries.

2014 Initiatives

- **Focus Area 1: Affordability**
- **Focus Area 2: Agriculture**
- **Focus Area 3: Natural Resources**
- **Focus Area 4: Financial Stability & Improved Operations**
- **Focus Area 5: Community Development**

Focus Area 1: Affordability

- HALE Program launch
- More options for families with new lease offerings
- “Rent with Option to Purchase” project in Kona (Laʻi
Ōpua)

Focus Area 1: Affordability

Under Development -- Exploring How To

- “Ōhāna Zoning” allowing more than one unit on a residential lease
- Break in pricing for package homes (e.g. Honsador, HPM, etc.)
- Kupuna Rental Housing (Oahu)
- Assisted Living Facility (Molokai) – Pilot Project

Focus Area 2: Agriculture

- Use the land already developed
- Assessment of existing unawarded agricultural lands in DHHL's inventory

Under Development -- Exploring How To

- Partnerships with Department of Agriculture/Agricultural Development Corporation

Focus Area 3: Natural Resources

- DHHL Water Policy
- Water Assessment Studies – Existing communities
- Water Rates Study (target summer launch)
- Assert DHHL's water rights
- Maui Energy Opportunities

Focus Area 4: Financial Stability & Improved Operations

- Clarification on county roles/responsibilities /
Reduce burden on DHHL financial resources
- Increase earnings -- real estate assets
- Improve servicing for the beneficiary

Under Development -- Exploring How To

- Increase earnings – Financial assets

Focus Area 5: Community Development

- Evaluation of Kulia and economic development grants
- Focused capacity building (due to limited funds)
- Native Hawaiian Development Program revisions – What is DHHL's role?



HAWAIIAN HOME LANDS
HAWAIIAN HOMES COMMISSION
DEPARTMENT OF HAWAIIAN HOME LANDS

Planning Office Update



HAWAIIAN HOME LANDS
HAWAIIAN HOMES COMMISSION
DEPARTMENT OF HAWAIIAN HOME LANDS

Planning Office Update

- ❖ **Beneficiaries**
- ❖ **Lands**
- ❖ **Plans**
- ❖ **Planning Projects**

Beneficiaries

Applicants

43,201 Statewide

8,801 Maui (20%)

Lessees

9,840 Statewide

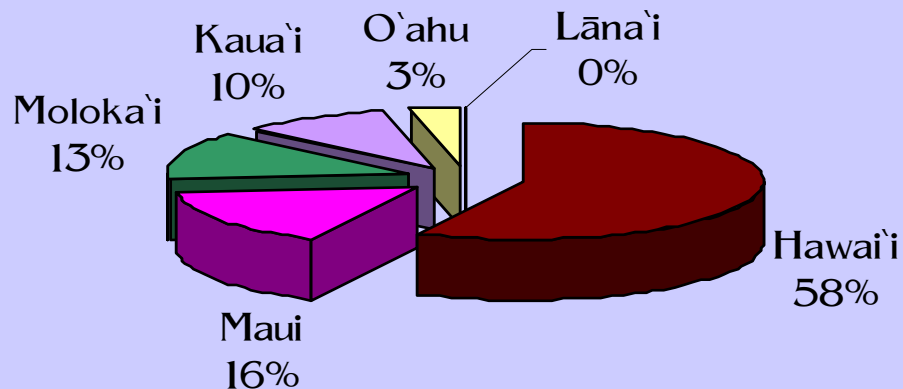
1,414 Maui (14%)

HOMESTEAD WAIT LIST	# OF APPLICATIONS FOR MAUI
Agriculture (51%)	4,514
Residential (42%)	3,709
Pastoral (7%)	578
MAUI TOTAL:	8,801

HOMESTEAD LEASES	# OF MAUI LESSEES
Residential (91%)	1,274
Pastoral (5%)	75
Agriculture (4%)	65
MAUI TOTAL:	1,414

Hawaiian Home Lands Trust By Island

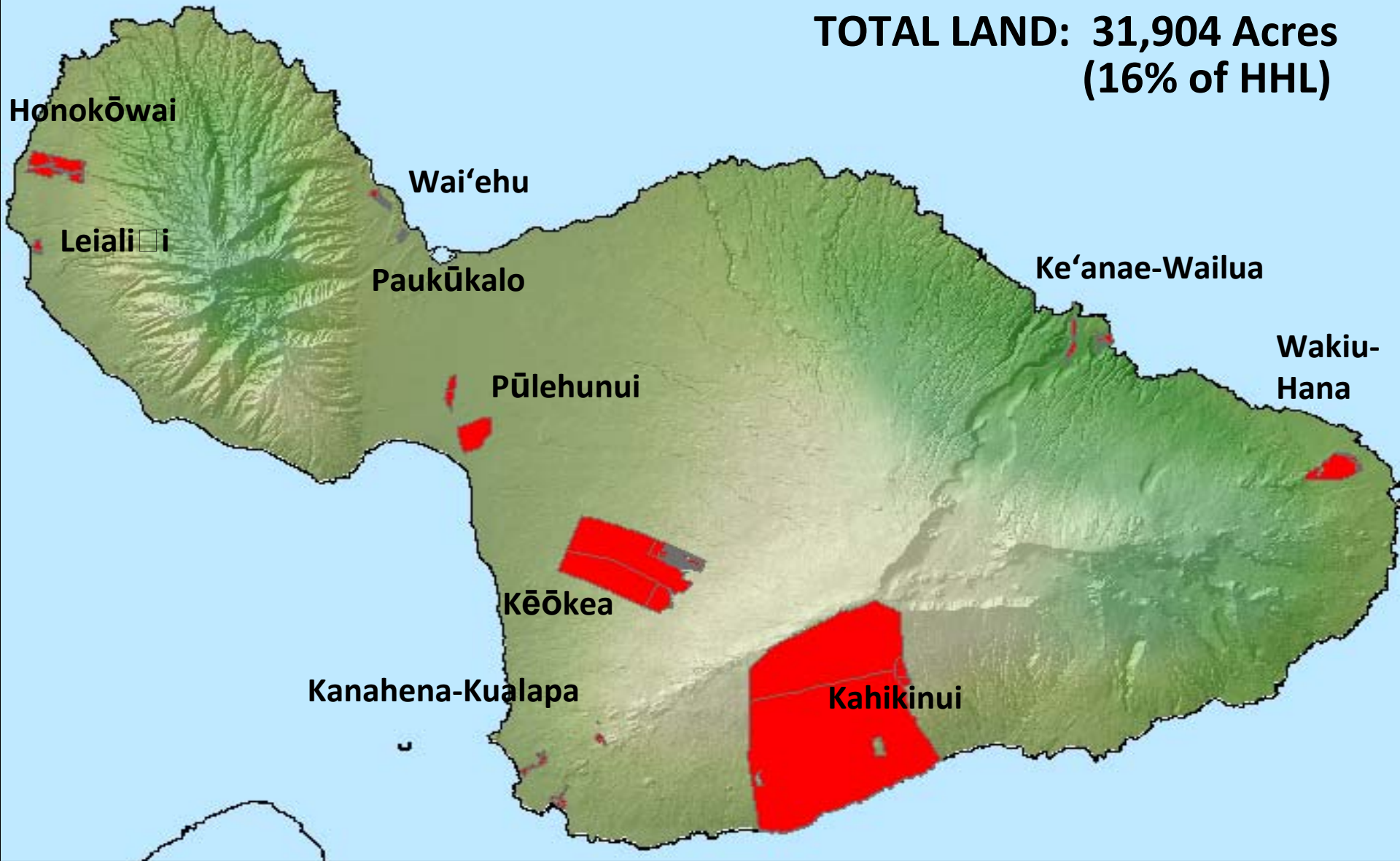
Percent Distribution of
Hawaiian Home Lands Trust



ISLAND	ACRES
Hawai'i	117,551
Maui	31,904
Moloka'i	25,747
Kaua'i	20,575
O'ahu	7,940
Lāna'i	50
TOTAL	203,767

Maui Land Inventory

**TOTAL LAND: 31,904 Acres
(16% of HHL)**



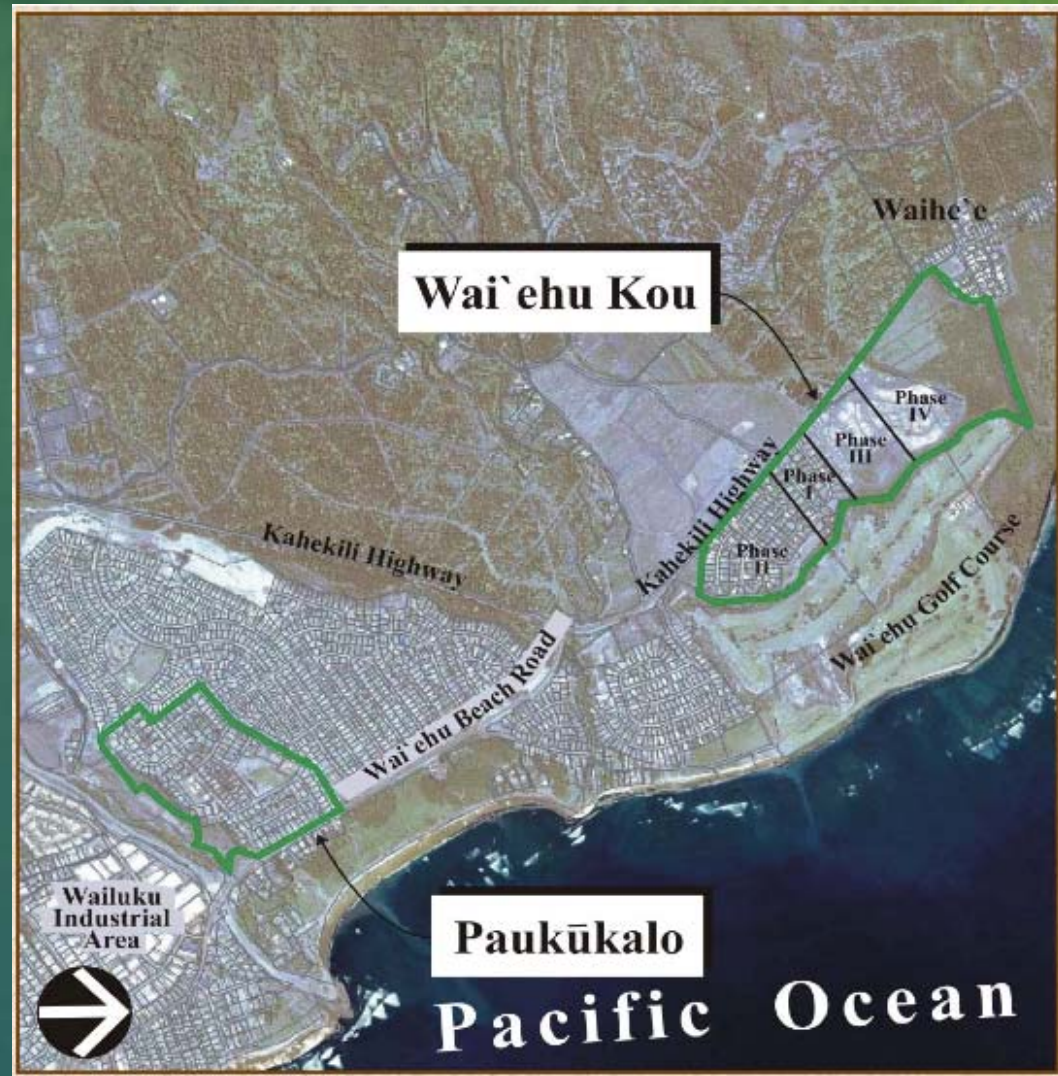
Paukūkalo & Wai'ehu Kou

Paukūkalo

- 61 acres
- 181 Residential Lessees
- DHHL Community Center
- Kamehameha Schools
Preschool
- Armory Site (1.77 acres)

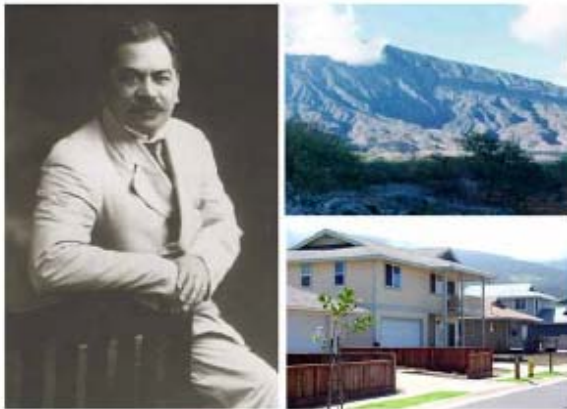
Wai'ehu Kou

- 181 acres
- 358 Residential Lessees
- Drainage Basins
- Community Use Areas



DHHL Island & Regional Plans

MAUI ISLAND PLAN



Prepared for:
The State of Hawai'i
Department of Hawaiian Home Lands

Prepared by:




September 2004

PAUKŪKALO-WAI`EHU KOU



JUNE 2010

Department of Hawaiian Home Lands 

Planning Projects

- **Housing Alternatives**
 - Accessory Dwelling Units – “‘Ohana Zoning”
 - Kūpuna Housing
- **Ag Program Plan – ongoing**
 - Maku‘u Pilot Project
 - Ag Peer-to-Peer Pilot Grant
- **Water Policy Plan – completed**
 - Monitoring CWRM
- **Community Development - ongoing**
 - Homestead Association TA & Training
 - Office of Planning – NH CED Study



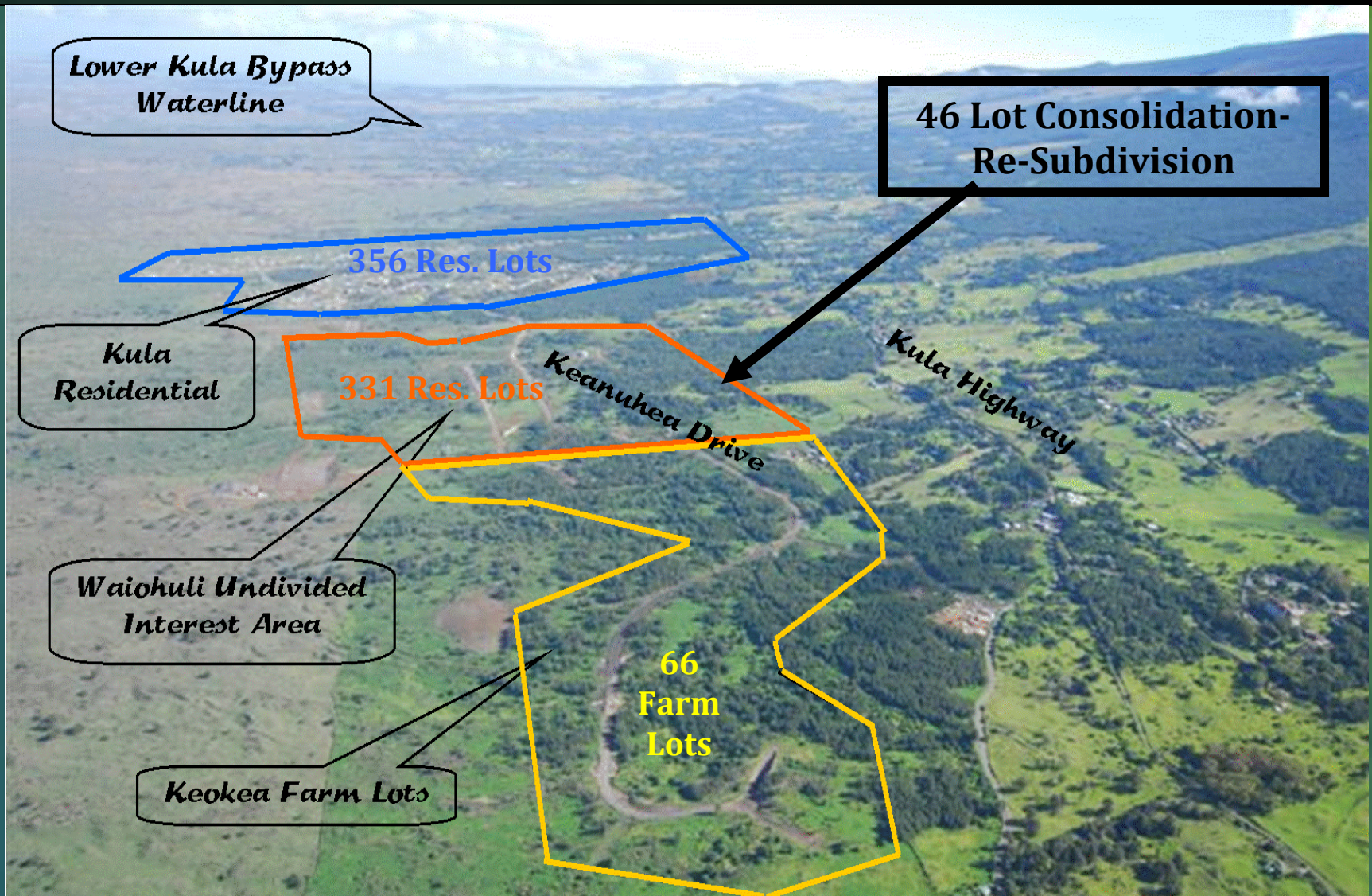
HAWAIIAN HOME LANDS
HAWAIIAN HOMES COMMISSION
DEPARTMENT OF HAWAIIAN HOME LANDS

Land Development Division Update

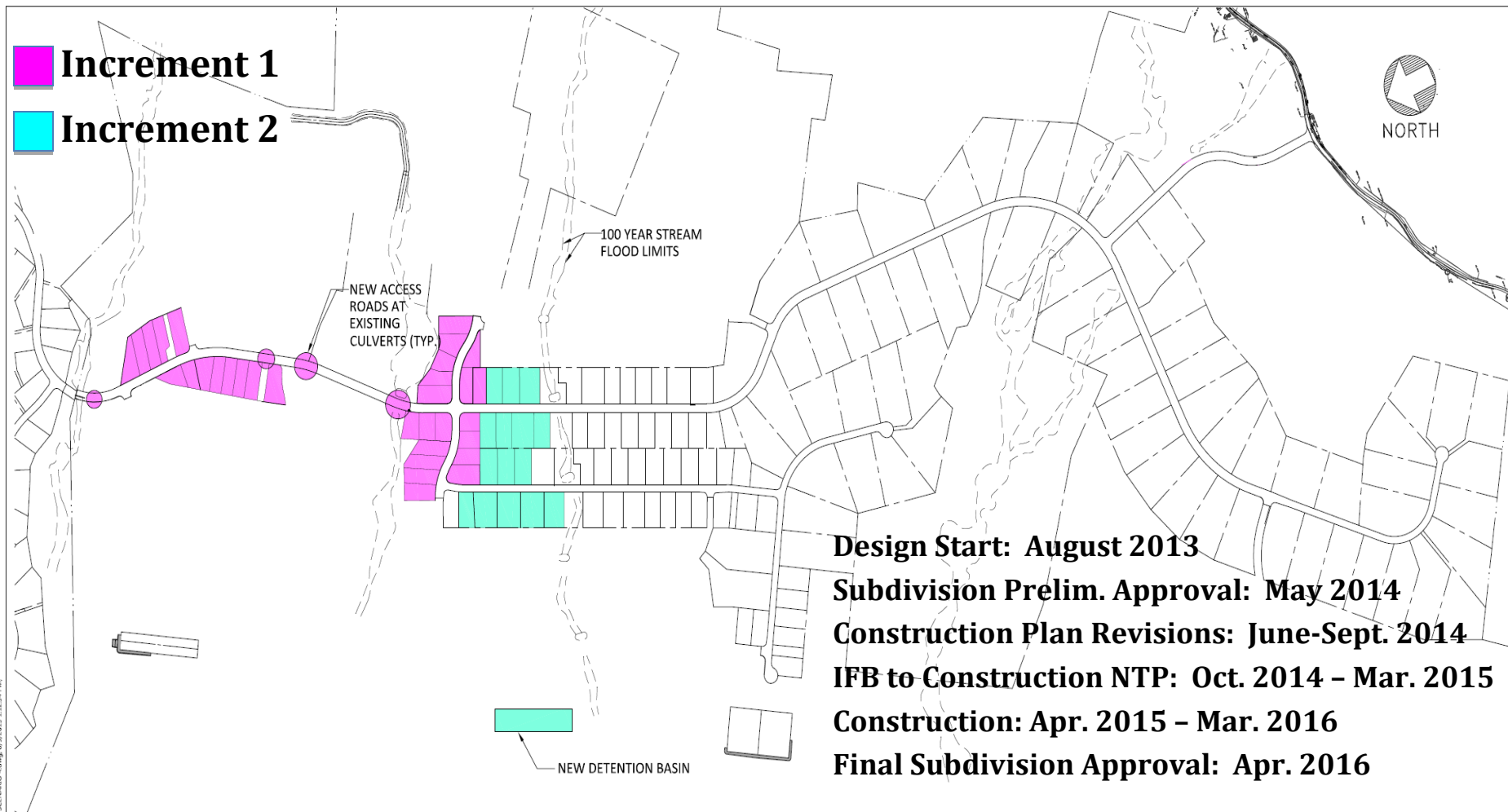
Land Development Division Projects – Maui

- 1. Kēōkea-Waiohuli Development – Phase I**
- 2. Maui Scattered Lots**
- 3. Lower Kula Off-Site Water System Improvements**
- 4. Honokōwai Water Source Development**

Kēōkea – Waiohuli Development



46 Lot Consolidation/Re-Subdivision & Drainage Mitigation



Maui Scattered Lots

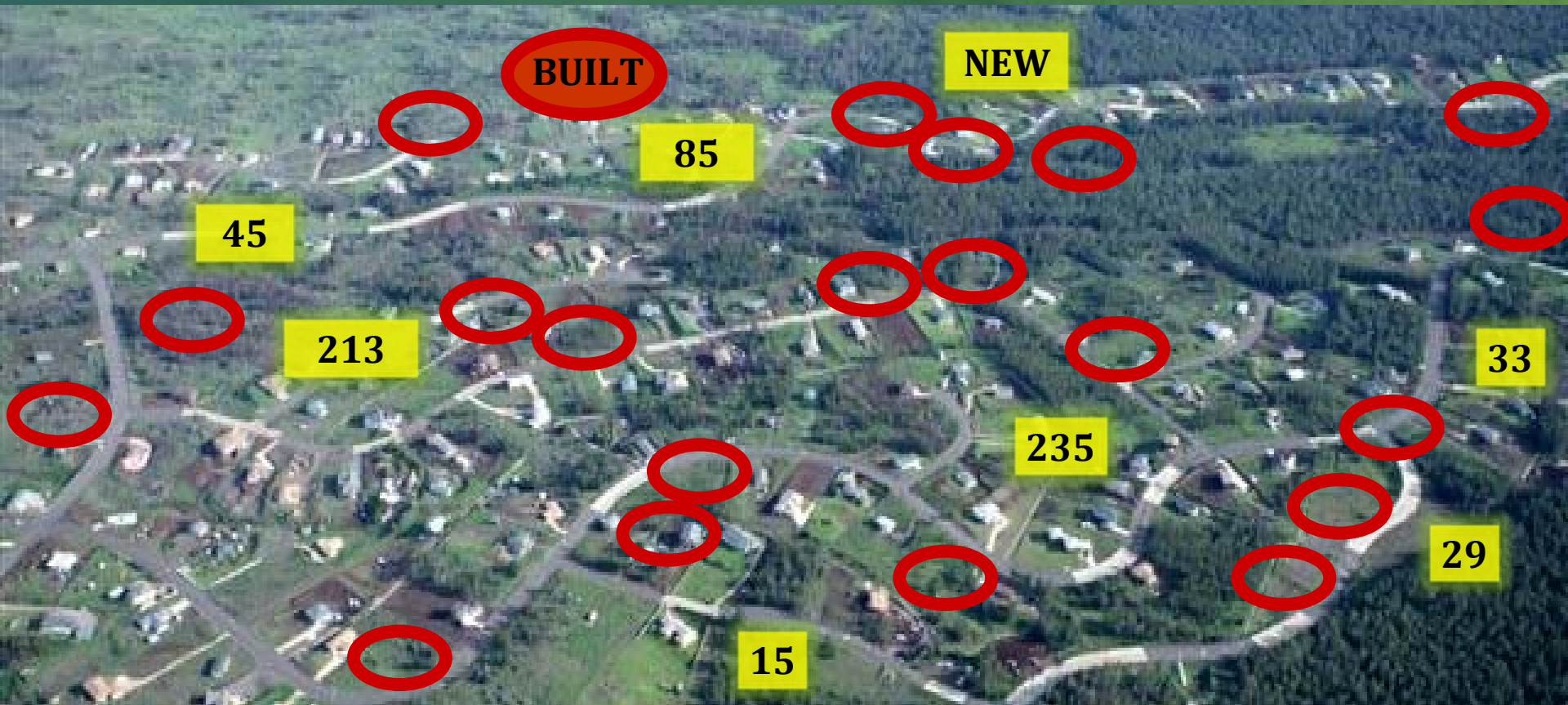
Waiohuli Undivided Interest Relocations to Kula Res. Unit 1

Built

Kula Residence Lots - 23 Homes
Waiehu Kou Phase III - 4 Homes

Proposed Construction (FY '14/'15)

Kula Residence Lots - 7 Additional Homes
Paukūkalo - 1 Home

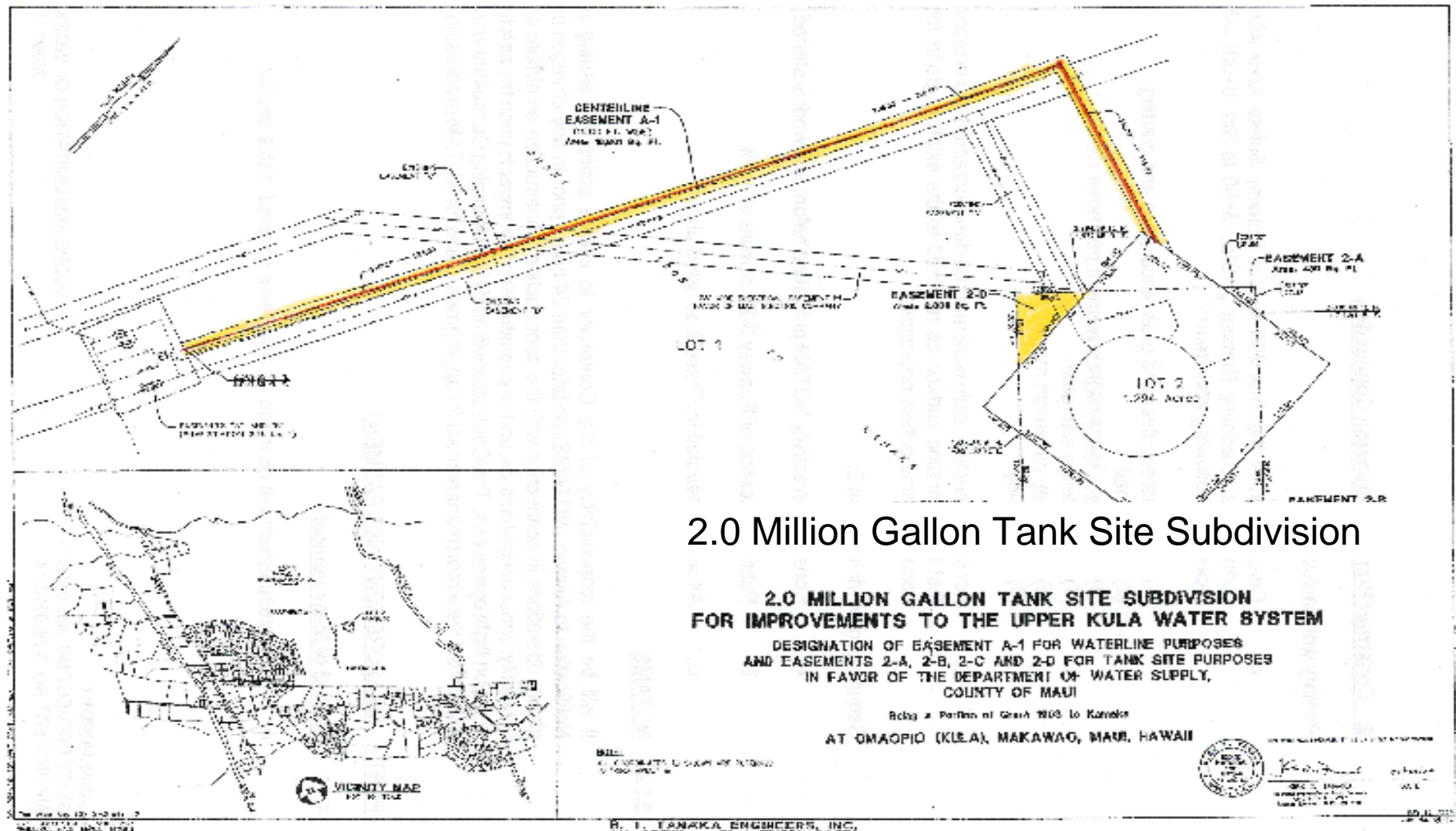


Maui Scattered Lots

Armstrong Builders, LLC
BIA Renaissance Green
Design Award - LEED Gold



(1,800 Linear Feet of New 18-inch Waterline)



Lower Kula Water System



Haleakala Ranch Land

Construction Cost: \$641,508

Start: September 2014

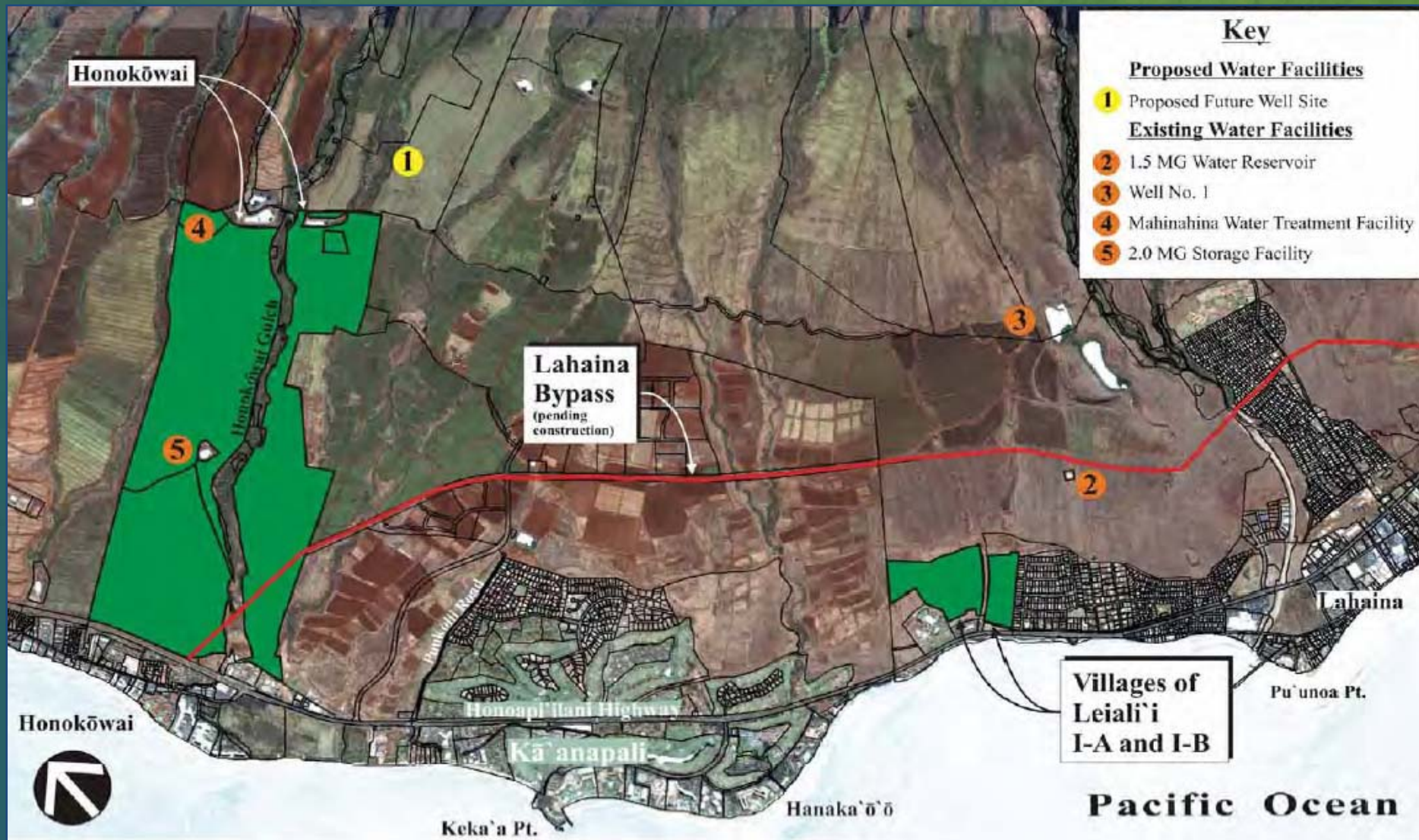
Completion: February 2015

Purpose: Improve delivery to DHHL subdivisions in Kula and Keokea.



Water line from tank to pump station

Water Source required to initiate development of Leiali'i IB & Honokōwai



Water Source Development



- Exploratory well completed
- Potential Sustainable Yield = 1 MGD
- Design for permanent pump, pump station, transmission, storage





HAWAIIAN HOME LANDS
HAWAIIAN HOMES COMMISSION
DEPARTMENT OF HAWAIIAN HOME LANDS

Homestead Community Update

Maui Homestead Organizations

- **◻Ahahui ◻Āina Ho◻opulapula O Waiohuli**
- **Ka ◻Ohana O Kahikinui**
- **Kēōkea Agriculture Hawaiian Homestead Assc.**
- **Paukūkalo Hawaiian Homestead Assc.**
- **Villages of Leiali◻i, Phase 1A Assc.**
- **Wai◻ehu Kou Community Homestead Assc.**
- **Wai◻ehu Residence Lots, Phase 2 Assc.**
- **Wai◻ehu Kou, Phase 3 Assc.**
- **Wai◻ehu Kou, Phase 4 Assc.**



HAWAIIAN HOME LANDS
HAWAIIAN HOMES COMMISSION
DEPARTMENT OF HAWAIIAN HOME LANDS

Open House

Community Organizations

- **Department of Commerce & Consumer Affairs**
- **Habitat for Humanity – Maui**
- **Hawaiian Community Assets**
- **Hui No Ke Ola Pono**
- **Office of Hawaiian Affairs**
- **Sandwich Isles Communications**