



STATE OF HAWAII
DEPARTMENT OF HAWAIIAN HOME LANDS

August 22, 2016

To: Chairman and Members, Hawaiian Homes Commission

Thru: M. Kaleo Manuel, Acting Planning Program Manager


From: Bob Freitas, HHL Program Planner
Julie-Ann Cachola, Planner 

Subject: Accept Beneficiary Consultation Report for the Kumu
Camp Project at Anahola, Kaua'i TMK (4)4-8-007:001

RECOMMENDED MOTION/ACTION

That the Hawaiian Homes Commission (HHC) accept this Beneficiary Consultation Report as the official record of beneficiary issues, questions, concerns, and comments regarding the Anahola Hawaiian Homestead Association (AHHA) and the Hawaiian Homestead Development Corporation (HCDC) request for long-term use, under a license or lease, for the Kumu Camp Project, located at 4261 Poha Road, Anahola, Kaua'i.

DISCUSSION

BACKGROUND

DHHL's Kauai Island Plan (KIP) dated May 2004 identified the current site (TMK No. (4)4-8-007:001), totaling 8.39 acres adjacent to Anahola Beach Park, with a Special District Land Use Designation. The Island Plan further details the justification for the land use in the excerpt below:

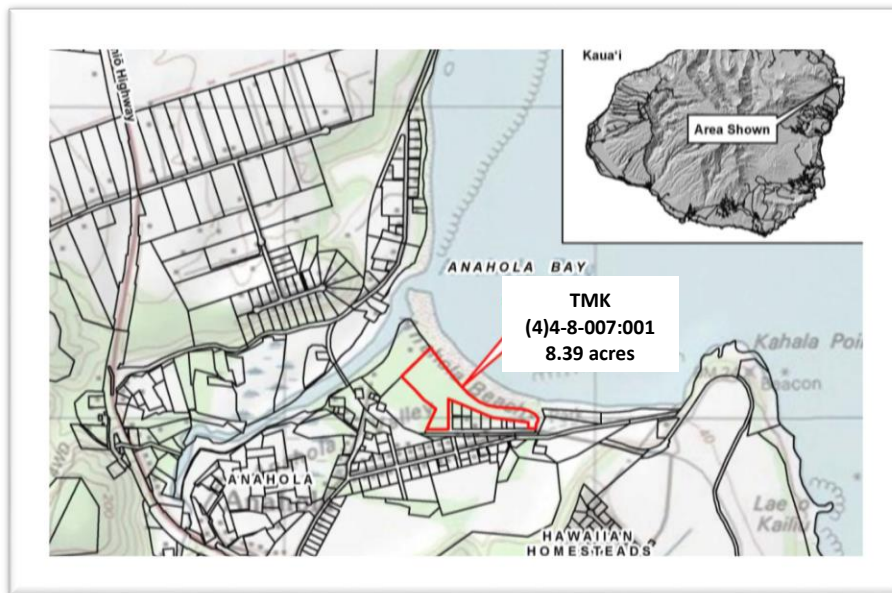
"The Special District areas makai of the Highway are designated around the Anahola Stream and flood zone as well as the shoreline. Residents of Anahola have an inextricable link to the ocean and its resources, making it essential that the coastal region remain healthy and thriving. With this in mind, the Plan designates a coastal buffer in Special District to maintain beach

access for recreation and subsistence activities and to serve as the makai node for the ahupua'a. Other uses for this area may include a coastal trail."

In 2010, as Anahola homesteaders engaged in DHHL's regional planning process, a potential "Kumu Academy" project was identified. During this early stage, the project called for the development of plans for a "Kumu Academy" (retreat area) for Hawaiian organizations, cultural practitioners, kumu and homesteaders around the base of the Anahola River on Aliomanu Road. Unfortunately, the "Kumu Academy" potential project did not receive enough votes to be designated as a Regional Plan Priority Project.

Undeterred, the Homestead Community Development Corporation (HCDC) and the Anahola Hawaiian Homes Association (AHHA) continued plans to develop a Kumu Youth Academy, aka, Kumu Camp, on 5 acres of an 8-acre DHHL parcel located in the middle portion of Bay, adjacent to the Anahola Beach Park.

Figure 1: Project Location



BENEFICIARY CONSULTATION ON THE KUMU CAMP PROJECT

Pursuant to the Beneficiary Consultation Policy, prior to any long term land disposition, the Planning Office is required to consult with beneficiaries in order to submit a report of findings to the Hawaiian Homes Commission to ensure that

beneficiary concerns are properly documented, compiled and reported. Consultation Reports are transmitted to the Commission at least one-month in advance of decision-making on a particular item.

Consultation Topic

Kumu Camp is operated by HCDC, the tax-exempt development arm of the homestead associations in the State of Hawai'i, including the Anahola Hawaiian Homes Association (AHHA). AHHA is a Hawaiian Homes Commission Act beneficiary-controlled and governed organization. HCDC's mission, since its founding in 2009, is to develop community and economic facilities and projects important to homestead areas and the Native Hawaiian people.

HCDC currently operates Kumu Camp and is seeking a long-term land disposition for the 8-acre parcel (TMK No. (4)4-8-007:001).

Notification

On March 11, 2016 DHHL mailed an invitation letter and meeting agenda (see Exhibit A) to 324 existing Anahola lessees, including all Agricultural, Residential, and Undivided Interest lessees, and 346 Wait List applicants who currently reside in the Anahola zipcode (96703) area for a total of 670 invitation letters.

Beneficiaries were invited to attend a consultation session to share their thoughts on HCDC's and AHHA's request for a long term land disposition for the Kumu Camp project site. Beneficiaries were invited to meet at the Kumu Camp site at 9:30 am to conduct a tour of the site. At 11:30 the group would move to the Anahola Clubhouse for the formal consultation meeting which would be held from 12:00 pm to 2:00 pm.

Site Visit at Kumu Camp

The pictures on the following page provide a visual summary of what occurred at the site visit. Beneficiaries in opposition to the long-term land disposition showed up in red t-shirts and gathered outside the entrance to Kumu Camp. Deputy Aila met the group and responded to their questions to ensure that the site visit remain orderly and productive.

Upon entering the facility, all participants gathered in a circle to begin the session with a Pule. The General Manager of Kumu Camp, Kahala Ho'omanawanui, greeted the group and provided a guided tour of the facilities. She explained that units are available for the community and guests. She explained the fee structure: the malihini fee is \$65.00, the kama'āina fee is \$55.00 and the homesteader fee is \$35.00. She emphasized that the units were available to the community. She explained that the revenue generated by Kumu Camp goes into paying for their water, insurance, land stewardship, and regular donations that are made to youth/sports groups in the community. Attendees were able to walk through the units and view the common areas, including a large pavilion, food truck, open showers, barbeque pits, and a swing-set playground area. Cleared pathways provided a network of trails that connected the facilities.

A detailed account of the questions and comments raised during the site visit is presented in Exhibit B. Beneficiaries were concerned that they would not be able to practice their customary access and use of the beach. For all of their lives, they could drive up and set up an area under the shade of the trees to use while they were fishing or swimming at the beach. Another beneficiary explained that while she was walking along the beach she sought shelter from the rain in the pavilion, but was told she had to leave. The General Manager was not aware of the incident and committed that it would not happen again. She explained that Kumu Camp encourages the community to use the pavilion and beach access. They just don't want people that are there to make trouble and they have a zero tolerance on drug use.

There were questions about the bathroom facility and how wastewater was handled. The General Manager explained that DHHL shut down the bathroom facility in 2013, when they were notified that they had to prepare an Environmental Assessment (EA). The EA was completed in January 2016 and they have secured the necessary permits. They are getting ready to begin construction.

April 9, 2016 Kumu Camp Site Visit

KUMU CAMP

Robin Puanani Danner
Project Manager

808.631.9082
info@anaholabeachretreat.org

P.O. Box 646, Anahola, Hawaii, 96703
www.anaholabeachretreat.org

*The Anahola Beach Retreat is a Non-Profit Initiative of the
Homestead Community Development Corporation*

at the

Anahola Beach Retreat

Kumu Camp is available for individuals and groups interested in short-term camping stays or day retreats. Patronage of the Kumu Camp supports the nonprofit, cultural, youth, and community programs in the Anahola Hawaiian Home Lands region.

HCDC
Homestead - Community
Development - Corporation



Large Kumu Camp signs at the entrance



*Deputy Aila ensured that cool heads prevailed—
he answered some of the heated questions outside---*



*The “red” shirts were in opposition; they
marched in with the sound of the Pū Shell*



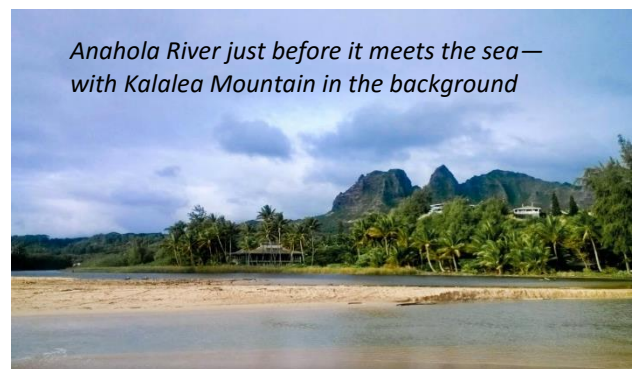
*Kahala Ho’omanawanui, the new General Manager
of Kumu Camp, gave us tour of the facilities and
answered questions under William’s watchful eye.*



You could feel the tension in the air.



Red shirts and yellow shirts walked out together.



*Anahola River just before it meets the sea—
with Kalalea Mountain in the background*

Other questions were raised about what youth groups received donations and the amount of donations. A request was made for a list of donations. The General Manager said that she could produce a list, but not in time for the afternoon consultation meeting. With all questions answered, the group disassembled to attend the Beneficiary Consultation meeting.

Beneficiary Consultation Meeting-Anahola Clubhouse

The group reconvened at the Anahola Clubhouse. HCDC/AHHA provided lunch for all participants. Seventy-seven people registered at the sign-in desk, but the actual attendance may have exceeded one hundred people, with at least 25 additional children. Eleven DHHL staff were in attendance.

When participants signed in, they received a half-page comment sheet which asked for their name, email address, phone number, and response to the following questions:

1. On a Scale of 1 to 5, how strongly do you support the Kumu Camp project and why?
2. What do you see are the social, cultural and economic benefits to you and your community?

The back side of the comment sheet was open for any comments or questions. There were two colors of sheets because staff had wanted to be able to distinguish beneficiary comments from non-beneficiary comments, however, when people signed in, they were not indicating on the sign in sheet whether they were a beneficiary or not, so there is no distinction by the color of the sheet.

Exhibit C identifies the 77 participants who signed-in at the meeting and the 84 people who either commented on the half-sheet comment forms or submitted written comments before the May 9, 2015 deadline.

DHHL gave a short presentation (see Exhibit D) which covered meeting objectives, ground rules, and more information about Kumu Camp. It was clarified that DHHL sought input from beneficiaries on HCDC/AHHA's request for a long-term land disposition for the Kumu Camp site. If a long-term land disposition was approved, DHHL noted that the following requirements would be included:

- DOH Approval for the Waste Water System;
- Incorporation of recommendations from the Beneficiary Consultation meeting;
- Authorized uses and mitigation measures described in the Environmental Assessment and approved by the Commission; and
- Other Commission terms and conditions as applicable.

The presentation also explained the department's due diligence process for all land dispositions. It was explained that when organizations submit a request for land, they are asked to provide information to assess their organizational capacity; they are asked to submit a project business plan; and community support or the extent of their social capital in support of their project is assessed.

At the close of the presentation, the group was given instructions to break into two smaller groups. The decision to break into smaller groups was made prior to the meeting. When staff was preparing for the consultation session, Kumu Camp raised concerns that non-beneficiaries would attend the meeting and present their concerns which were more than likely different from beneficiary concerns. As a result, Kumu Camp requested that non-beneficiaries be separated from beneficiaries. Staff was prepared to accommodate the request, which required more staff in attendance and more equipment and supplies. However, many concerns were raised when the facilitator asked non-beneficiaries to move into the adjacent room. After some discussion, a decision was made to remain in one large group.

Consultation Findings

This section summarizes information DHHL received from all sources, including:

- Kumu Camp Site Visit Comments and Questions (Exhibit B)
- Testimonies made during the Consultation meeting (Exhibit E)
- Comments on half-sheets provided at the meeting (Exhibit F)
- Letters and emails received before the May 9, 2016 deadline for comments (Exhibit G)

The number of individual submittals received from each of the above sources are presented in the table below. Note that a

submittal (a letter or a testimony, for example) will contain a number of individual comments. In addition, the number of submittals by self-identified stakeholder status is also presented.

Number of Individual Submittals by Source

Source	Number of Individual Submittals	Percent
Written	68	54%
Oral testimony at the meeting	21	17%
Kumu Camp Site Visit	18	15%
Half-Sheet comments at meeting	18	15%
TOTAL:	125	100%

Number of Submittals by Type of Stakeholder

Stakeholder	Number	Percent
Not Specified	52	42%
Homesteader	40	32%
Other	16	13%
Non-Hawaiian	9	7%
Anahola Village Landowner	8	6%
Total:	125	100%

Staff read through the 125 submittals and coded and inputted the comments in a database in order to generate report statistics. If there was any question about how to code a response, it was not coded. For all statistics presented, the blank, or "Difficult to Determine" responses are also reported. The Table below identifies where people stood on the overall question of whether they supported or did not support the Kumu Camp Project.

Support for Kumu Camp	Number	Percent
No (Does not Support)	73	58%
Yes (Supports Kumu Camp)	29	23%
Difficult to Determine	23	18%
TOTAL	125	100%

A cross-tabulation of support by source of comment indicates that people were not comfortable to testify in person against the project. Of the 73 individuals who did not support the project, 63 expressed their discontent in written form.

Support for Kumu Camp	Number	On-Site	Testimony	Written	Half-Sheets
No (Does not Support)	73	2	8	53	10
Yes (Supports Kumu Camp)	29		11	11	7
Difficult to Determine	23	16	2	4	1
TOTAL	125	18	21	68	18

An analysis of the comments received also revealed why people were in support of the project and why people did not support the project. Most participants had more than one reason

for being for or against the project. In coding the responses, staff identified up to 4 reasons why someone would be for or against the project. We found that for the people who supported the project, 29 identified at least 1 reason for their support, 19 people identified 2 reasons for their support. Only 8 people had at least 3 reasons for their support and only 1 person had identified 4 reasons for their support. Similarly, for the those who were against the project, 62 people identified at least one reason; 59 identified two reasons, 47 identified 3 reasons, but only 12 people identified 4 reasons for being against the project. By tallying all responses, we were able to see the reasons for support and the reasons against the project. The reasons that were only mentioned one time were not included.

REASONS FOR SUPPORTING THE PROJECT	NUMBER OF TIMES MENTIONED
Cleaned up Area; Presence in Area	14
Friendly Feeling	10
Children Enjoy the Site	8
Beautiful Beachfront	7
Donations to Community Youth Groups	6
Need to Work Together	4
General Support	3

REASONS FOR OPPOSING THE PROJECT	NUMBER OF TIMES MENTIONED
Impact on Environmental Resources	43
Commercial Development at Anahola Bay	35
Self-Serving Agenda	26
Way of Life	18
‘Iwi Kūpuna—Burial Ground	11
Unnecessary dissension in the community	11
No Community Benefit	10
Disregard for Laws and Rules	6
Not proven worthy of long-term land disposition	5
Lack of Reporting/Accountability	5
Traffic/Over-crowding	5
‘Non-Pono’ Dealings	3

In voicing their opinions and concerns, participants also offered recommendations. The table below identifies the different recommendations offered.

Recommendations	Number	Percent
Blank/Difficult to Determine	36	29%
Reject Long Term Land Disposition, Remove Buildings, Make a Park	23	18%
Require more Community Involvement	21	17%
General Opposition-no specific recommendation	14	11%
No Long-Term Land Disposition	11	9%
General Support for the Project-no specific recommendation	9	7%
Relocate the Project	4	3%
Conditional or Short-Term Land Disposition	4	3%
Park for Locals	3	2%
TOTAL:	125	100%

In addition to the comments received in this consultation, the Department also received signed petitions during the years 2012 to 2015 that were against the development of Kumu Camp. The data from those petitions were not included in this report.

Kumu Camp has the potential to be a project that brings the community together; a project the entire community can be proud of. In order to do this, however, the project will need to conduct community outreach activities and develop meaningful ways that the community can participate in the development and implementation of the project.

Based on the comments received, the Commission might want to consider the use of a probationary license or lease structure - use a two to three-year initial term, subject to review and consultation with the community, then longer terms based on community support. An annual report and community meeting requirement might also be stipulated. These provision can ensure that the community is involved as the project is implemented over the short-term. At the same time, it can address immediate issues of transparency and accountability.

The use of the area will need to be carefully described in DHHL's disposition documentation and should match the Environmental Assessment (EA) that was approved by the Commission. The intended use of the site, as expressed in the EA, is for group and individual overnight camping, as well as hosting regular surfing, yoga, and hula classes. Vacation rentals were not envisioned or described in the Environmental Assessment.

In summary, while there is overwhelming opposition to the Kumu Camp project as it is currently being implemented, there are recommendations based on the comments received that can address the concerns and provide an opportunity for the meaningful involvement of the community to create a project they can all feel proud of.

RECOMMENDED ACTION

DHHL staff respectfully requests that the Hawaiian Homes Commission accept this Beneficiary Consultation Report as the official record of beneficiary issues, questions, concerns, and comments relative to the HCDC/AHHA request for a long-term land disposition for the Kumu Camp Project site.

LIST OF EXHIBITS

- EXHIBIT A: Invitation Letter and Agenda
- EXHIBIT B: Site Visit Notes
- EXHIBIT C: List of Attendees and List of People Who Submitted Written Comments
- EXHIBIT D: DHHL Presentation
- EXHIBIT E: Record of Oral Testimonies Presented at the Consultation Meeting
- EXHIBIT F: Written Comments submitted at the Meeting (on Half-Sheet Comment Forms)
- EXHIBIT G: Letters and Emails Received before the May 9, 2016 Deadline for Comments

DAVID IGE
GOVERNOR
STATE OF HAWAII

NIHAI S. TSUTSET
LT. GOVERNOR
STATE OF HAWAII



JOHIE M.K. MASAGATANI
CHAIRMAN
HAWAIIAN HOMES COMMISSION

WILLIAM J. AHA, JR.
DEPUTY TO THE CHAIRMAN

STATE OF HAWAII
DEPARTMENT OF HAWAIIAN HOME LANDS

P.O. BOX 1879
HONOLULU, HAWAII 96805

March 11, 2016

Aloha!

The Department of Hawaiian Home Lands (DHHL) will be conducting a Beneficiary Consultation meeting about the Anahola Hawaiian Homes Association (AHHA) and the Homestead Community Development Corporation's (HCDC) request for long term use under a license or lease for the Kumu Camp Project located at 4261 Poha Road, Anahola, Kauai. The Land Management Division and Planning Office has scheduled the meeting as follows:

When: Saturday, April 9, 2016

Where: Site visit starts at 9:30 am at
Kumu Camp 4261 Poha Road, Anahola

Where: The Consultation will move at 11:30 am to the
Anahola Clubhouse 3900 Kawelo Street, Anahola

Consultation meeting 12:00 pm to 2:00 PM at the Anahola Clubhouse.
Attached is an agenda for the day.

DHHL is conducting this consultation to gather your mana'o regarding the Kumu Camp Project and to get feedback related to AHHA & HCDC's request. This is also an opportunity to learn more about the vision and history of the Kumu Camp Project and to tour the facilities and project site. As an Anahola beneficiary, I encourage you to attend this meeting.

Aloha and mahalo,

A handwritten signature in black ink, reading "Jobie M.K. Masagatani".

Jobie M.K. Masagatani, Chairman
Hawaiian Homes Commission

Agenda

Beneficiary Consultation Meeting

Kumu Camp Project

April 9, 2016

9:30 am Site visit at Kumu Camp

4261 Poha Road, Anahola

Parking at site or across the street in the Village Park

10:00 am Anahola Hawaiian Home Lands Association (AHHA) and Homestead Community Development Corporation (HCDC) Orientation and Tour

- A. Learn about history of Kumu Youth Academy Camp
- B. Walking tour of camp ground and Anahola Bay
- C. Operation of group and individual overnight camping
- D. Hosting of surfing, yoga and hula classes
- E. Opportunities for Beneficiary use of facilities

11.30 am Meet at Anahola Club House – 3900 Kawelo Street, Anahola

- A. Review planning documents maps
- B. Light Refreshments – Provided by AHHA/HCDC

12:00 pm Consultation Meeting

(12-12:45 pm) Presentations

- A. Programs and Activities (AHHA/HCDC)
- B. Planning Process, Environmental Assessment, Permits, Approvals and Next Steps (DHHL)

(12:45-2:00 pm) Breakout Groups

- C. Facilitated discussion on how you feel about this project.

2:00 pm End Of Meeting

EXHIBIT B

Kumu Camp Beneficiary Consultation Site Visit

April 9, 2016

Kumu Camp

10:00 am to 12:00 pm

KUMU CAMP SITE VISIT—QUESTIONS, ANSWERS AND COMMENTS

- C: I walk through this place every Sunday and I survey the people on the beach. 90% of them are visitors from far away who booked it online through HomeAwayFromHome.com. So it's funny how they say it's a youth camp, but it's all tourists and it's advertised on a vacation rental website. If you look at their website, you'd think it's a Hawaiian camp for kids.
- C: We're trying to make sure that AHHA and HCDC and Robin Danner doesn't get a 25-year lease from DHHL for beachfront property that they say is for a youth camp, but in actuality functions everyday as a vacation rental for non-Hawaiians.
- C: The DHHL is holding a consultation meeting on this afternoon, but they've only given us a 15-minute window to express how we feel about it, so we're signing letters and petitions.
- Q: Is DHHL sanctioning the camp?
- A: It's DHHL's land and Robin Danner, HCDC, and AHHA, without a lease, have built illegal structures, have installed a sewer system (septic tanks) all with no permits and no lease to the land. I don't know how this happens, but we're here to let them know that we know.

We're going to tell them that we don't want this kind of development over here. My question is going to be, why are they not talking about the 18,000 tourists that book their reservations through a travel industry website. Please feel free to ask questions because we need to ask the questions and hold them accountable to what they say and what they do. My experience is that what they say and what they do are two different things.

We want them to hear us. We also want DHHL staff to hear us since they will be here. Main thing is we remain cool if anyone is here.

Comment directed to William Aila: how could you leave only 15 minutes for people to comment?

Aila: You will be given the time you need to make your comments.

Kahala Ho'omanawanui (General Manager from the beginning of the year) addressed the group and answered the questions below. She explained that the units are open to the community and guests. We do have fees. Malihini is \$65.00; Kama'aina fee is \$55.00; and the homesteader fee is \$35.00. It's open to everyone. Whatever revenue we make is used for insurance, water, land stewardship and youth activities of the community. We are giving to our community, it's what this whole project is based on. The pavilion can be used by the community. We've had hula halu. We had a community movie night that went pretty well and we want to do more of these. The community can use the pavilion, we just ask that you call and schedule with the office so we don't have everyone showing up on the same day.

- Q: So are you saying that I can come here any time and set up a tent right here and no one is going to kick me out? But I have to ask someone?

A: Yes, we don't want trouble-makers, but if you're coming to bring your family to enjoy the beach, we promote that.

Q: The problem is that I was raised here. Before I could just pull up, I never had to ask anyone.

A: You don't have to ask, we just ask for the respect of zero tolerance on drug use. We don't want people to come and cause trouble. We encourage the community to use the facilities, the pavilions, etc.

Q: Are you aware that long-time residents of this area that used this beach for many years are being kick out? It was raining so someone sought shelter in the pavilion and was kicked out. Are you aware this happened?

A: I'm not aware and I can assure you that it will never happen again.

Q: Why was it named kumu camp?

A: Kumu is like a teacher.

Q: Kumu is an older teacher. But when this project came out, the mission statement was that this was going to be for kupuna to come and use the tentallows to teach projects to the kids. But this has not been done. No elders have even been asked if they want to do this.

Q: Do you know who made the decision to market this place internationally and do you intend to continue this practice?

A: Yes, because what we generate from the malihini goes back to youth programs. We make donations to sports groups in the community.

Q: How much have you donated to the youth groups? Can we see a report today?

A: I don't think I can get it today, but I can give you ballpark numbers since I've been here. We donated the portable toilets for contest which is like \$200, \$500 to the baseball team, \$500 to Hokulele canoe club.

Q: I see you have a restroom there, what is that?

A: Yes, that was our bathrooms that was constructed in 2013 but was shut down when we got a notice from DHHL saying that we had to turn in an Environmental Assessment. The EA was completed at the end of 2015. At the beginning of 2016, we completed our permits and are now waiting for construction. But this bathroom has been shut down and we're not using it. The people who come here have to use the portable toilets and the outside shower.

Aila: just like any other camp ground.

Q: How long has this place been opened?

A: 2013.

Q: Did someone inspect the structures to see if they are safe?

A: Yes, our Certified Engineer, Mike Olsen, did.

Q: Did the EA include a cultural impact statement?

A: Yes.

Q: And was it approved?

A: Yes, the Hawaiian Homes Commission approved it.

Q: How did this idea turn into what it is today? Where is the beginning, the birth of this?

A: Response by William Aila, Deputy Director for DHHL: My understanding is that a grant was given for community based economic development. The camp was constructed and temporary permits were given and allowed them to be here until they could comply with all the rules. The county and department had to work out what rules applied. Then the EA was developed and approved. So now they're coming in for a long-term license.

C: I think it's backwards.

Aila: If we had to do it again, we'd do it differently.

C: Well I'll tell you that this started to benefit the charter school. It's a shame you have this divide in the community and the reason for the divide is the lack of communication.

C: The reason you have this divide is primarily due to lack of communication. Who is holding this meeting?

Aila: DHHL is holding this meeting.

C: Don't you think that you should have a private session with the other group?

C: This is the pavilion where we have hosted: hula halau, retreats, and family gatherings. It's open to the public at no charge. We only ask that you call the office and schedule your event so we don't have 10 families trying to use one space. We had a movie night here that we want to do more of.

C: When you don't have the right permits, shouldn't you address this?

Aila: We wrote letters and told them they are not in compliance and they are now working at trying to bring everything in compliance.

EXHIBIT C

KUMU CAMP BENEFICIARY CONSULTATION MEETING
ANAHOLA CLUBHOUSE
APRIL 9, 2016

LIST OF REGISTERED PARTICIPANTS

	First Name	Last Name
1	Laola	Aea
2	Kim	Aimsley
3	Thompson	Aipa-Rivera
4	Piilani	Alapai-Lopez
5	Ted K.	Blake
6	Myrna	Bucasas
7	Kambe	Celtez
8	Pua	Chin
9	Wesley	Chow
10	Manulele	Clarke
11	D. Leilani	Cobb-Adams
12	Erin	Cobb-Adams
13	Shane	Cobb-Adams
14	Peter	Contrades
15	Frank	Cummings
16	Sandra	Cummings
17	Sherri	Cummings
18	Lynette Haulani	Fernandez
19	William Judith	Fernandez
20	Monaghan	Gabriel
21	Debbie	Ganotis
22	Junior	Ganotis
23	Kainani	Gonzalez
24	Cindy	Griffin
25	Justpia	Grossman
26	Mahealani	Hookano
27	Kahala	Hoomanawanui
28	Kamane	Hoomanawanui
29	Louis	Hoomanawanui
30	Pat	Hunter-Williams
31	Richard	Kahoonei
32	Kalae	Kaleiohi
33	Hope	Kallai
34	Nalani	Kaneakua
35	Debra	Kekaua lua
36	Pohakukauea	Kekaua lua
37	Puuohu	Kekaua lua III
38	Kealii Aukai	Koco

39	Kawika	Kualii
40	Kipukai	Kualii
41	Luella	Lemn
42	Alan	Lima
43	Evalani	Lizame
44	Stephen	Lizame
45	Jay	Lotu
46	Robin	Lotu
47	Nalam	Mahelona
48	Jason	Marrotte
49	Malialani	Marrotte
50	Salvador	Marti V
51	Agnes	Marti-Kini
52	Cindy	Morikawa
53	Yasu	Morikawa
54	Katherine	Muzik
55	Agapito	Navor
56	Kahealani	Pa
57	Kaimana	Pa
58	Yvonne	Pa
59	George	Pia
60	Amber	Rivera
61	Puanani	Rogers
62	Rachel	Smith
63	Wini	Smith
64	Joe	Sugai
65	Dora	Swain
66	Kapana	Thronas-Kahoonei
67	Tamee	Thronas-Kahoonei
68	Jacalyn	Tomacde
69	Annie	Torio
70	James	Torio
71	Marie	Torio
72	Ipo	Torio-Kauhane
73		Torio-Kauhane
74	Anna	Velasco
75	Jermaine	Ven
76	Keola	Wong
77	Heu'ionalani	Wyeth

Staff in Attendance: William Aila, Niniau Simmons (Chairman's Office); Paula Aila, Kuuwehi Hiraishi (Information and Community Relations Office); Bob Freitas, Gigi Cairel, Nancy McPherson, Ulu Lota, and Julie-Ann Cachola (Planning Office); Kaipo Duncan (Land Management Division); and John Peiper (Enforcement).

EXHIBIT C

KUMU CAMP BENEFICIARY CONSULTATION
LIST OF PEOPLE WHO SUBMITTED WRITTEN COMMENTS

#	First Name	Last Name
1		AHHA
2	Keone	AhLoo
3	Mona	AhLoo
4	Thompson	Aipa-Riveira
5		Aiwohi
6		Anahola Village Resident
7		Anonymous
8	Anthony	Apuna
9	Jillian	Auberger
10	Susan	Barozzi
11	Kelsey	Brusnyk
12	Ken	Burch
13	Connie	Burton
14	Wesley	Chow
15	Susan	Coan
16	D.L.	Cobb-Adams
17	Lorna (La)	Contrades
18	Peter K.	Contrades
19	Felicia Alongi	Cowden
20	Sandra	Cummings
21	Gary Frank	Cummings, Jr.
22	Tiara	Cummings-Dahle
23	Rob	Dorman
24	Noreen	Dougherty
25	Judith	Fernandez
26	Lynette Haulani	Fernandez
27	William	Fernandez
28	Mr. and Mrs.	Ganotis
29	Vivian	Hager
30	Valerie	Hayes (Kauo)
31	Amanda Dobra	Hope
32	Pat	Hunter-Williams
33	Kevin	Kaleiohi
34	Debra	Kekaua lua
35	Punohu	Kekaua lua III

#	First Name	Last Name
36	Karen	Kenny
37	Kris "Kawika"	Kualii
38	Justin	Lemn
39	Luella	Lemn
40	Myra	Lewin
42	Robin	Lofu
43	Jason K.	Marrotte
45	Malialani	Marrotte
47	Vernon	Marshall
48	Agnes D.	Marti-Kini
49	Noa	Mau-Espirito
50	Al	Morgan
51	Myrica	Morningstar
52	Katherine	Muzik
53	Pamela	Nelson
54	Kainalu	O.
55	Kahealani	Pa
56	Mapuana	Pa
57	Shilo	Pa
58	Yvonne	Pa
59	Sylvia	Partridge
60	Judy	Pattee
61	Ku'uleialoha	Punua
62	Pua	Reyes
63	Angie	Rogers
64	Tracy	Schavone
65	June	Sekioka
66	Julia	Silva
67	Andrea	Slaski
68	Rachel	Smith
69	Jane	Stern
70	Sue	Strickland
71	Jacalyn	Tomacde
72	Jimmy	Torio
73	Marie	Torio
74	Claudia	Trask

EXHIBIT C

#	First Name	Last Name
75	Cody K.	Valpoon
76	Teeana K.	Valpoon
77	Trudy	Van Oostrum
78	Mira	Walker
79	Jan	Westphal
80	Christy	Wong
81	Keda	Wong
82	Aaron, Becca and Alicia	
83	Lynn	
84	Mira	



**Beneficiary Consultation
Kumu Youth Academy
(Kumu Camp)
April 9, 2016
12:00 to 2:00 p.m.**

Agenda

I. WELCOME

Introductions
Meeting Format
Group Kuleana (Ground Rules)

II. WHY WE ARE HERE TODAY

Conduct Beneficiary Consultation
Provide current information about Kumu Camp
Gather comments from Beneficiaries regarding long term license

IV. FACILITATED DISCUSSION

V. NEXT STEPS

Meeting Objectives

At the end of today, we will have:

- ☐ An indication of support for long term license
- ☐ Shared understanding of the Kumu Camp Project
- ☐ List of the Project's social, cultural & economic benefits to the HHCA beneficiary community
- ☐ Indication of the level of Beneficiary support for the programs and services provided by Kumu Camp

HHC Beneficiary Consultation

- Policy of Consulting Beneficiaries for:
 - Land Use Projects, Long-Term Leases/Licenses
- Consultation Meeting
 - What's Being Proposed?
 - Do the Beneficiaries Support the Project?
 - Will the Project Provide Benefits for Beneficiaries?
 - Record Beneficiary Input
- One-Month Consultation Period
 - Receive Written Comments (email or mail)
- Consultation Report to HHC
 - Who Came to the Meeting
 - Summarize Main Points and Attach Full Record of Comments

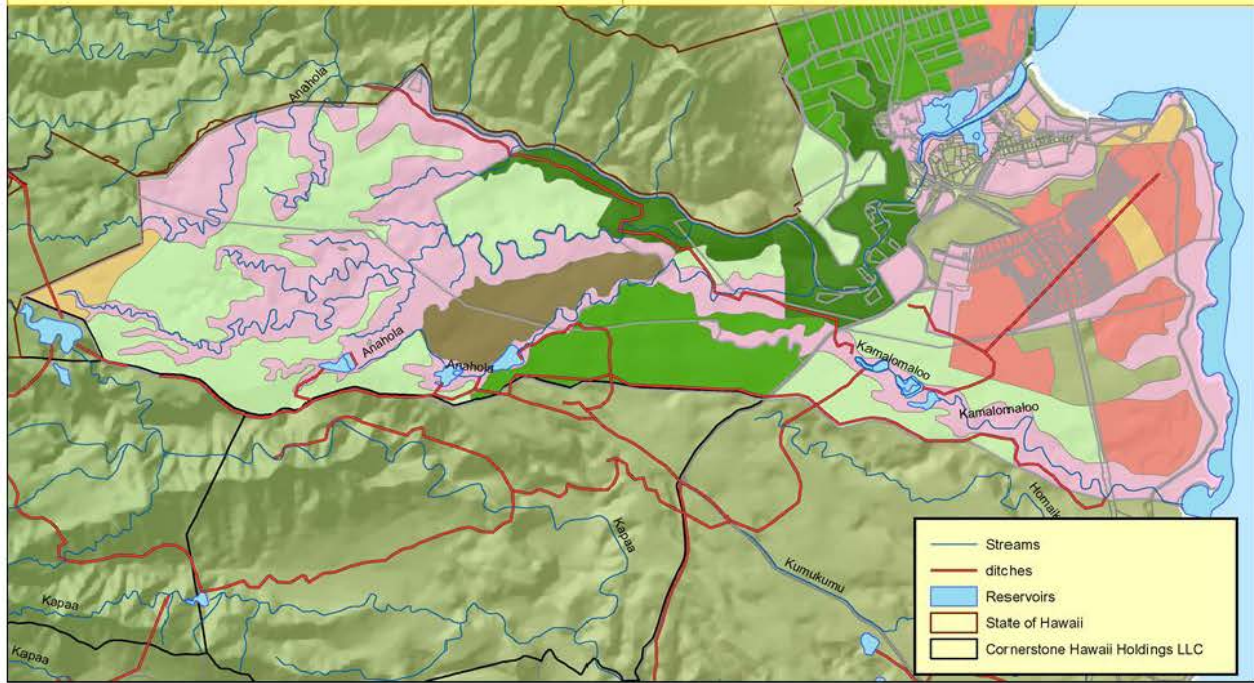
EXHIBIT D
DHHL PRESENTATION

DHHL Anahola Lands

- Approximately 4,500 acres
(21% of Kaua'i lands)
- 267 Subsistence Agriculture

Anahola Homesteads

- 535 Residential & 46 Agriculture Lessees
- On Deck: Pi'ilani Mai Ke Kai



Planning Activities

TIMEFRAME	ACTION
2004	Kaua'i Island Plan-designates (zones) site as "Special District" and "Community Use"
2010	Anahola Regional Plan identifies a "potential project" for a "Kumu Academy" retreat for Hawaiian organizations, cultural practitioners, kumu and homesteaders around the base of Anahola River.
2011	-- DHHL issues AHHA/HCDC a Month-to-Month Revocable Permit for the Site -- AHHA/HCDC Cleans Area, Installs Tentalos and Portable Lua, etc. -- AHHA/HCDC Starts to Host Youth Groups
2012	-- AHHA/HCDC Submits Land Use Request for the Site -- AHHA/HCDC Publicize that Kumu Camp is Open for Business
2013-2015	-- AHHA/HCDC Secure Grants for Improvements -- Hires a Planning Firm to Prepare an Environmental Assessment (EA)
Oct. 2015	HHC Workshop on Draft EA—HHC requests additional due diligence
Dec. 2015	Staff Conducts Site Visit and Holds Meetings with State and County agencies
Jan. 2016	HHC Issues a Finding of No Significant Impact for the EA

Site Information



History of Kumu Camp



History of drug use and need to develop a project for a youth and kupuna to serve the needs of Anahola Homestead Community.

Kumu Camp Activites



Educate youth about cultural resources, practices and history of Anahola Bay

Provide Youth activity and other sports programs



Kumu Camp Facilities

Facilities are available for youth camping activities, capacity to provide group and individual camping, maintenance and management operations



Kumu Camp Uses



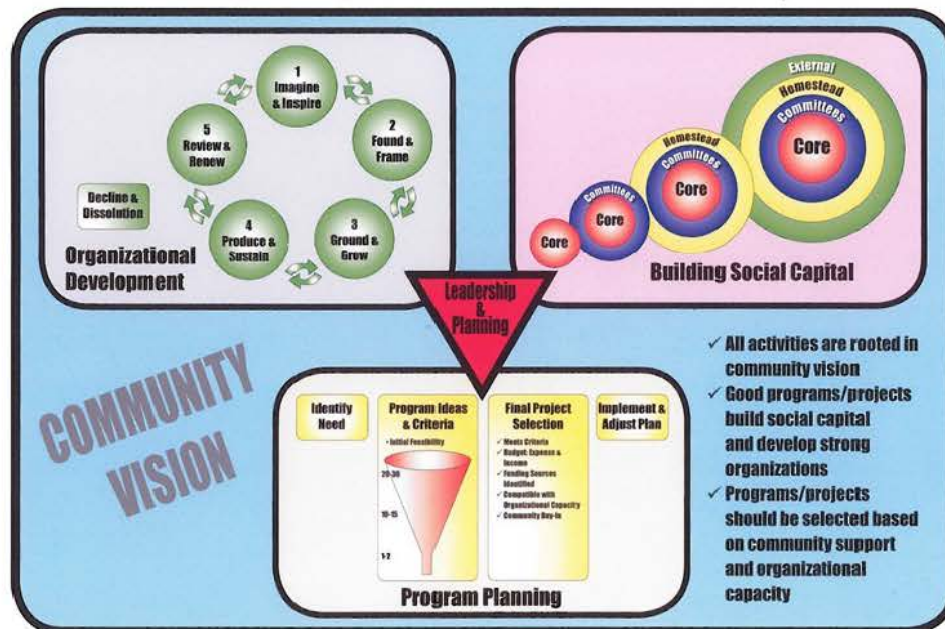
Homesteaders and homestead organizations can use the facilities, there is a fee for use (homesteaders and non homesteaders use fees vary) see fee schedule for reservation requirements

Long Term License Requirements

- DOH Approval for Waste Water System
- Incorporation of recommendations from Beneficiary Consultation
- Authorized uses and mitigation measures described in the Environmental Assessment and approved by the HHC and other HHC terms and conditions if applicable will be incorporated into the license

EXHIBIT D DHHL PRESENTATION

Community Organizing & Development



Note: "Organizational Development" is based on the *5 Life Stages of Nonprofit Organizations*, a book authored by Judith Sharkey Simon.

DCCR Homestead Gathering
Department of Hawaiian Home Lands
May 16, 2015

Building Social Capital



Consultation Discussion

- Breakout in groups organized by:
 - HHCA Beneficiaries: Applicants, Lessees, Successors
 - Non-HHCA Beneficiaries

Discussion Questions

- 1) What do you see are the social, cultural & economic benefits to you and your community?
- 2) On a Scale of 1 to 5, how strongly do you support this Kumu Camp project?

Next Steps

30-day comment period – comments due by May 9, 2016

Prepare Beneficiary Consultation report June to July 2016

Hawaiian Homes Commission Meeting to be determined

Mail Comments to:
Department of Hawaiian Home Lands
Attn: Planning Office
P.O. Box 1879
Honolulu, Hawaii 96805

Email comments to:
DHHL Planning Office
DHHL.Planning@hawaii.gov

EXHIBIT E
RECORD OF ORAL TESTIMONIES PRESENTED AT THE CONSULTATION MEETING

Kumu Camp Beneficiary Consultation Meeting
April 9, 2016
Anahola Clubhouse
12:00 pm to 2:00 pm

MEETING NOTES
Record of Oral Testimonies

*Note: This beneficiary consultation also included a site visit to the Kumu Camp.
Comments and Questions raised during that site visit are presented in the Site Visit Notes.*

Attendance:

A total of 77 people signed in at the registration table. The attendees are listed in alphabetical order: Laola Aea, Kim Aimsley, Thompson Aipa-Rivera, Piilani Alapai-Lopez, Ted K. Blake, Myrna Bucasas, Kambe Celtez, Pua Chin, Wesley Chow, Manulele Clarke, D. Leilani Cobb-Adams, Erin Cobb-Adams, Shane Cobb-Adams, Peter Contrades, Frank Cummings, Sandra Cummings, Sherri Cummings, Lynette Haulani Fernandez, William Judith Fernandez, Monaghan Gabriel, Debbie Ganotis, Junior Ganotis, Kainani Gonzalez, Cindy Griffin, Justpia Grossman, Mahealani Hookano, Kahala Hoomanawanui, Kamane Hoomanawanui, Louis Hoomanawanui, Pat Hunter-Williams, Richard Kahoonei, Kalae Kaleiohi, Hope Kallai, Nalani Kaneakua, Debra Kekaulua, Pohakukaea Kekaulua, Puuohu Kekaulua III, Kealii Aukai Koco, Kawika Kualii, Kipukai Kualii, Luella Lemn, Alan Lima, Evalani Lizame, Stephen Lizame, Jay Lotu, Robin Lotu, Herionalani Loyeth, Nalam Mahelona, Jason Marrotte, Malialani Marrotte, Salvador Marti V, Agnes Marti-Kini, Cindy Morikawa, Yasu Morikawa, Katherine Muzik, Agapito Navor, Kahealani Pa, Kaimana Pa, Yvonne Pa, George Pia, Amber Rivera, Puanani Rogers, Rachel Smith, Wini Smith, Joe Sugai, Dora Swain, Kapana Thronas-Kahoonei, Tamee Thronas-Kahoonei, Jacalyn Tomacde, Annie Torio, James Torio, Marie Torio, Ipo Torio-Kauhane, Torio-Kauhane, Anna Velasco, Jermaine Ven, Keola Wong.

DHHL Staff in attendance: William Aila (Chairman's Office); Kuuwehi Hiraishi (Information and Community Relations Office); Bob Freitas, Gigi Cairel, Nancy McPherson, Ulu Lota, and Julie-Ann Cachola (Planning Office); Kaipo Duncan (Land Management Division).

Background and Purpose of Beneficiary Consultation Meeting

The Land Management Division and the Planning Office of DHHL held a site visit and meeting on April 9, 2016 in order to gather beneficiary mana'o about Kumu Camp and to get feedback on the Anahola Hawaiian Homestead Association's (AHHA) and the Homestead Community Development Corporation's (HCDC) request for long-term land disposition for an 8-acre parcel (Tax Map Key 4-4-8-007:001) located at 4261 Poha Road, Anahola, for the Kumu Camp Project.

Introduction and Summary Presentation

A powerpoint presentation was given at the start of the meeting, that provided ground rules and objectives for the meeting, background information about the Beneficiary Consultation policy, and a chronology of previous actions involving the Kumu Camp. Maps were presented to identify DHHL lands at Anahola and the area that Kumu Camp is requesting for a long-term land disposition. Information was presented about the activities and facilities at Kumu Camp.

The presentation identified DHHL requirements under a long-term land disposition which included:

- Department of Health approval for the waste water system
- Incorporation of recommendations from the Beneficiary Consultation

- Authorized uses and mitigation measures described in the Environmental Assessment and approved by the HHC; and
- Other HHC terms and conditions that would be incorporated into the land disposition, if applicable.

The presentation also included a graphic depicting 3 components of community organizing and development, including: organizational capacity, project business plan, and community support.

Beneficiary Input

Ipo Kauhane-Torio: She greeted all attendees and thanked staff for not limiting her testimony to 2 minutes. Cited genealogy. I stand here not as the Po’o of Kanuikapono, but as someone that loves Anahola. I know we are all here because we love Anahola, because we want to do right, because it’s about not us, but the future generations. This seems like a dog and pony show. This idea, I support. The two yurts, in the slide show, Kanuikapono donated them. Why? Because my work requires the river, my work that I do for the keiki and the ‘ohana of this community requires the kai, it requires mauka, and all of you—whether you live in the Village or live in this increment or that increment. It is the universe speaking to me that told me to wear this shirt and no matter how many colors we have in Anahola, I will wear all colors, because it comes down to, what am I willing to do for Anahola. My main thing is our community, our keiki will not be healthy, they will not thrive if we do not take time to take care of our aina, our muliwai.

When we started Kanuikapono, 20 years ago, I stood on the shoulders of those that came before me. None of the ideas or needs is what we came up with. We started with the 1987 Belt Collins Development Plan and poured over it to see what did the people who came before us say. Is this good for our community? Of course this is good for our community. We need this, the children need it, you need it. I find myself in a situation where I’m going to get cracks from all teams. I’m getting cracks from yellow, cracks from red—bring it on, because I’m about Anahola.

One person that influenced me is Uncle Hosea Lovell, it’s him and other kupuna that are still in this room. It’s the kupuna that need to be speaking and we all need to learn how to hamau, ho’olohe, and feel. He said you have to work with the children to protect the ‘opae. The ‘opae is not running and I remember the ‘opae, 5 years old with my Grandmother, one scoop of your scoop net in your bucket, then they disappeared. The commitment Uncle Hosea and I made to each other was that I committed to get the ‘opae back. Well guess what? The ‘opae is back. This is not the time to be divided, but it is the time to be pono—and I think that is the issue that is at the heart of this community. What is pono is what is aloha.

When I think about everything that has happened since we formalized this idea of having a place for cultural activities. There was a moment when it felt like there was traction in this community, then it turned violent. This is a good project, the question is, why is it inciting anger and violence and hostility? Why is something so beautiful bringing out the worst in us? You are beautiful and hard working, I want to work with you, I love you guys. You are beautiful. There is the ‘ike. Everything we need is right here in this Clubhouse, but it’s has to start with aloha and pono. So going on the record, I support this. There’s proof for it—we need this. But I’m going to be honest and say that it is not steeped with aloha. So I owe this community an apology because when I jumped on board, I made the mistake all those years ago, of not coming back to the people at the Village first and

foremost and saying, how do you feel about this. I knew better. It wasn't that long ago that my Dad was standing here, taking cracks. I was a little girl watching it. I was raised for this. Going with my father to meetings, waiting in the car, carrying his papers.

When I was thinking about this testimony, I wondered, where did we go wrong? We didn't talk. We didn't allow a beautiful idea like this become our project, our kuleana—and it's not too late. Yes, the benefits are tremendous—this is the secret. This is the obvious need for our people, but it has to be done in the right way. If it's not done in the right way, it will have the opposite effect. We're going to give this to a group that we all cannot get along with, and we'll be looking from the outside in, wishing we were there. That's why I got involved so many years ago. I wanted to make sure there was a way for us to use it. It's about access. Aloha and pono first, then access and malama. If we can do this, then Anahola becomes a destination, not just a place for us, but a place for our families to come, our cousins from across Polynesia. We have to make sure we have some kind of agreement among all the factions before you give out a lease. Do not hold us to the 30-day deadline. At one time, we went house to house. Every single family was heard and we need to do it again. If we do it right way, just like the graphic showed—going from core to bigger and bigger—if we can do it the right way, it's going to be amazing. It's time to think beyond that. It's not about who's doing it—we're all doing this. Thank you for managing us—we're a nuclear bomb. We can do it. I support this camp. I'm going to give it a 5 so it doesn't fall off the table...with revisions, with addendums, with all of our mana'o folded into it—so it's not an official 5 yet.

2. 2nd Speaker: We want to be sure that whatever we put there is correct. If this community wants to run a vacation rental, eco-tourism project somewhere, we have beautiful lake with ocean view. DHHL not doing anything with it. Move the camp up there. Keep the water clean, give the access to our children, for kupuna programs, but let's not be running a vacation rental on our beach. I'd be hard pressed to find any Hawaiian that does not care about the ocean and land.
3. 3rd Speaker: I'm from Molokai and was raised on homestead. Been living here since 1958. I consider myself a kumu, not a kupuna yet. There's been a question about what is a kumu and to me a kumu is a teacher—could be old or young. A kupuna is someone you go because they have a source, a spring to bring forth that they want to share. There is a difference between native tenant and native Hawaiian. Native tenant is the 36 residents who lived in Anahola during the Great Mahele. Everyone thinks the makai side was part of Hawaiian Home Lands, but that valley was never part of the Hawaiian Home Lands. My in-laws were offended when people came to accuse them of purchasing the lands in the valley. They were turned over by DLNR because they didn't want to manage the lands so it was given to DHHL. I live right in the back of the KC. My question to those that object to this, I want to know if you have a better plan. If you speak against it, that means you have a better plan. From what I see is you need resources. I think it's a nominal fee that they charge. I don't want it to go back to the way it was before because I lived there I saw the illegal activities—I saw how scary it was when my husband and I would walk to the beach people were living in make shift tents, so we stopped going to the beach. When KC came in they asked me and I said as long as they don't cut down the palm trees. We may not be in agreement, but unless you have a better plan, I don't want to see drugs, abandoned cars, people dumping their mattresses. Where were we in 2011 when it was a mess. Now it's nice and cleaned up. We all have great ideas. We live there. We did nothing—people dumping rubbish there, I don't know why they want to dump their rubbish there. So we can't be looking at personalities. Everybody has to generate

income to be self-sustaining. You have generate income, but where does the money come from? You have to generate income. I totally support this project. We need to look beyond personalities. I've heard a lot of negative things, but how many of you have gone down to see what they're doing. I have gone into see the tentalows and I think it's amazing. I just wish that the group could be more open and see the benefits and view it more constructively. That area, since 1958 has been nothing, the only way we can move forward is that we have to work together. I don't see this as Robin Danner. I see this an entity. She may be the one Akamai to get the grants—someone has to be in charge. I want us to not look at who is in charge, but see this as a viable project.

4. 4th Speaker: I'm a beneficiary. I just want to make sure we know what's going on here. We all kanaka can do this on our own. As kanaka maoli as Hawaiian nationals we already have the right to do this. They have a division of native Hawaiians, small 'n' large 'N'. This divides our people, we don't need this. DHHL is supposed to benefit native Hawaiians not other people in our own land. This should be a refuge for our people. We have educate our people. We are not native Hawaiians, not yet.
5. Mary Swain: I'm glad this is going on because Anahola River is a special place for me. It is a beautiful place—where people can go, under certain regulations. I'm glad there is something going on. When I saw the things going on there I thought one of my favorite places is changing. I think it's a nice place for everyone—how you work it out I don't know. Love what we have, but use it properly. You need to share, this is something I learned from my grandfather. We share. Hopefully they want to do good too, not just take it over. Aloha kekahi I ke kahi.
6. Gary Cobb Adams, grandson of Swain. We have to address these questions. What do you see are socio, cultural and economic benefits to you and your community. I agree, great idea; implementation, not so great. On scale of 1-5, how strongly do you support the project, I would give it a zero. Because when you go to Aotearoa, you go to a place that demands reverence. When you walk through KC do you get reverence? I stayed in those tentalows on Molokai. Do you know why they don't want them on Molokai? Because their bay went from a thriving bay to a bay that no longer has fish. Why? Because it's just numbers. If you have that many people going into a place that aren't Akamai about how to do this properly, even if they're trying, they don't. They call this KC Learning Academy. Is there learning going on there? Is there a legitimate kumu there that has 'ike to share? If those were beautiful hale--There's like 5 people on island that can build beautiful hale. If they were these hale, that place would demand reverence. There would be no drinking, no smoking, no drugs...ever. Is that in the plan? I worked with youth, they have a lot of issues. We have to give them an example to hold up to the kids—so they can say, I want to be that. The thing that kills me is that this is sucking the aloha out of us. When that name comes up, my friends tell me stop. I think it's a great idea. They have taken a problem and have fixed a bit of this. Before used to have heroin users, but they left, then other things came in. The Project can't move forward because we can't justify it. I have friends in the planning Department, they say no way that this can happen. If you went to another beach, and put yurts on the beach you couldn't do this, because you can't legally. So DHHL chooses to abide by county rules. You can do whatever you want on HHLs, but I hope DHHL would please follow the county's rules and regulations.

Aila: please don't go home today and put up anything, because of the Departments jurisdiction. There are consequences. yes, we follow county rules and regulations because they help to enforce.

7. 7th Speaker: Explained genealogy. DHHL has to manage our lands. The pilikia is valid, but we do need to join together and unite for our kids sake. We can have our differences, but we also have what has been taught to us to work as a 'ohana and ho'oponopono. Let's get rid of the colors. We have problems with the leader, but she's not the leader, she's the worker. She's very successful in many ways that we can take advantage of. We need her mana'o in this room and not have a divided wall. I suggest we get together in a round table to ho'oponopono, but everyone has to be willing to come up with a solution—to make this a beautiful Anahola project. Our children are watching and they know we're fighting, they hear our pilikia of what's going on. For our children's sake, let's get together and sit in a circle to hash it out, to feel safe to express ourselves. I commend DHHL for having the guts to come out today and face this group.
8. 8th Speaker: I want to answer the first question. If you got to scale it now, I'd give it a zero. There's been a lot of nonprofits in the area that's been trying to do what they trying to do. These organizations should have been included in the talk to develop a master plan that should be approved. Hopefully we can come up with a consensus and begin the process to move the KC forward.
9. Shane Cobb-Adams: Thank you for everyone coming today. So we have these questions we should be addressing. A better question that we should be addressing is: what is the social cost, the cultural cost, and the economic cost to our community that KC poses. Because it's not about the benefits. The people wearing red are not worried about the benefits, we're worried about the cost to our community. The cost of development on lands, the cost of 18,000 people on Anahola Beach. Our Anahola fishing village cannot handle 18,000 visitors per year. At 50 people per night, 365 days per year (50 x 365=18,250), that's what AHHA and HCDC is scaled up for. They might have changed management, but they're just going to change manager's again. Robin has changed the management of all the programs she runs, including CNHA who has highest turn over in management. I'm trying to convey to you that the community has no faith in AHHA and HCDC. Who does not want a 25-year lease to AHHA/HCDC, raise your hand, stand up. We have concerns about what is going on our beach because that's our traditional fishing grounds that's where we practice cultural traditions. We don't want 18,000 non Hawaiians a year camping on our beach. It would be better if the area was a park we could all use.

How strongly do you support this project? It's phrased wrong. It doesn't give you any option, but to support it. I don't like this question.

Next question: on a scale from 1-5, how strongly do you oppose KC? With 5 being the strongest, how many people oppose KC at level 5, raise your hand. What is disheartening and challenging for those of us living in the village, who have tried to control non-Pono development, we have AHHA and HCDC building illegal structures with no lease, no permits, in a Special Management Zone with iwi kupuna. If it was non-Hawaiians doing this, we'd be down there. It flies in the face of 50 years of work of Hawaiians trying to hold development accountable in Hawaii, to be pono. Now to let Hawaiians go and do non-pono development and to do it illegally? We should all be concerned about this. We don't need non-treatment septsics so close to the water. This is a concern for us who go to the beach, fish at the beach, our kids swim at the beach. These are real issues. Now they're going to get permits? We've had 3 years of this being forced down our throats. We have a petition

with 400 signatures, because it's not just the people here, it's the 400 who signed the petition, and for every 2 signatures on the petition, there's 2 more. Because this has to end. These are written letters. The petition will be submitted. Because there are people that couldn't come to the meeting. Most of the community is not in support of DHHL issuing a lease for 25-years.

10. 10th Speaker: I came here today with nothing on my mind; I came here to find out what's going on. I'm not from Anahola, but I am a kanaka. It's a shame to see other Hawaiians cutting down other Hawaiians. It may be wrong, it may be right. If we don't give our people a chance...like the black crab in the buckets, you go back there won't be any crabs left in the bucket. Us kanaka need to help each other. Give them a chance. It might benefit our children. About whether or not there's a kumu down there, who is to say who a kumu is? This park needs to be run in a rightful way. If you shut id own now, we will never know what our people are capable of doing. We have to give each other chance, if it works, it works, if not, then we pull them out, but not yet. It's just starting. We have to have faith in our kanaka for making it happen for the rest of our kanaka. When we against each other, we make it easy for the government. I got offered DHHL lease, but I couldn't because of insufficient funds—not enough money to get on the land. So if you live over here, get involved. Don't cut them down without knowing what's happening. On a Scale of 1-5, I had 3 written on my paper, but I think it just went up because I want you folks to continue and move on. It can be worked on, but if we stop it now, it will never happen. Our main interest as kanaka is to make sure these kanaka run it in the right way and don't abuse the power to do different things on the land.
11. Aunty Aggie, Po'o of Farmers at Anahola. It's a huge kuleana—to make sure our precious resources are protected. The kai, the wai, the 'aina, the mauna. We need access to these resources for food, for subsistence. So that's my foremost concern. That the resources are not abused, misused or overused. At the Bay we have the akule that was scared to the ali'i. So much food comes out of the Bay, so we have to protect that. As long as KC is doing their part to protect the resources, and we have assurances of this, then maikai. I also want assurance a hotel will not be built there or commercialized development. We don't want thousands of non-Hawaiians living on the beach sharing our resources but not getting anything in return. The other thing is the yurts are illegal. Put up a solid legal structure that will be a good stable foundation, not something that people will get caught in if we have a hurricane or storm. That's not pono. We want assurances that we won't have jet skis, parasailing, surf board lessons, surf board paddling, boat tours. This is country, we want to keep Anahola country. We don't want another Poipu Resort or a mini-Waikiki. I was raised in Waikiki beach. My father, 100% kanaka from Waipio Valley; my mother from New York city, but she spoke better Hawaiian than most of the people here today. I speak of this because I truly love Anahola; I raised 7 kids here. KC concept: 5, but as far as what you've actually done here=0. You need to bring this up to at least a 3. You need to work with all of our associations. You cannot be writing emails behind our backs and threatening us. You cannot threaten neighbors that are non-Hawaiian. That's a guest. They so scared, to me that's insane. Bullying is not an option.
12. 12th Speaker: I have an idea, the whole front should be an oceanfront park. I'm for parks. It should be a beautiful park for the people. We could hire people to take care of the park. We could do a lot of things, except commercialize it. It would not be for camping purposes. We could do riverside activities. KC should the G section in Aliomanu—it's a nature trail. You could go there and set up your camp. It won't take too much to move your tentals and set up a camp over there. Leave the beachfront for our people, for our kids. We could do a beautiful parkway. Camping should be

done further down where you can do camping. Open everything up. KC has affected our traffic. Scale of 1-5? I don't support KC. I never did because they never came to talk to us about it.

13. Kawika Cletcher, been on the AHHA board for 15 years. I don't mean to offend you. I love Anahola. I was a baseball coach here, I took our team to the championship. We beat a Honolulu team. This is something to brag about because we have choke problems in Anahola. The main problem is meth—doing their deals at 2:00 in the morning. I'm sick of this. I'm sick of going fishing at night and seeing all these people all high. I'm sick of darkness being in Anahola; black, envy, jealousy, strife. Anahola not supposed to be like that. We all have koko, we all part of the same tree. I come from the Nanaulu line and Mala'o we go way back to Limahuli Valley, where all kanaka come from. My wife is kanaka too. I love Anahola but I don't like what's happening at Anahola. I want to go to the beach and not have to step on somebody's doo-doo on the beach, or an ice-pipe, or little packets—I'm sick of it. Because it affects all of us. It's someone's kid, somebody's mother, wife, sister is being destroyed. Every family is being affected. What is enough? They say it takes a village to raise a kid—that's kūkae. It takes a mother and a father, a grandmother and grandfather to raise your kids—not a village. I never grew up in Anahola, I grew up in Palolo. Everytime I try to do something good for Anahola because this is where my kids grew up. I don't want them coming in destroying our community, our people. That's why we have to stand together. On a scale of 1-10, it's minus 1 in importance. The important thing is taking care of each other, of our kids. When I was on the board I voted for this because I thought it would bring jobs to Anahola, that it would people together. But it seems to have divided people. I don't threaten people, I don't write emails. Talk to me; I'll listen to you, I won't fight you. I don't trust anybody who wears a suit and is a non-Hawaiian who claims to know Hawaiian history because that's how we lost our lands and culture. We have problems, but the problems can be fixed. I don't have anything against the people in the village, because I'm related to some of the people in the Village. We come from the same tree. I'm tired of Anahola fighting. I want some unity. If unity takes cooperation, then we cooperate. I don't want to be like the 'a'ama crab because I've never been in the bucket; I've always been free. I earned my freedom I spent 4 years overseas as a soldier. I was a pathfinder, first in last out...and that's what our people are about. First in, last out.
14. Myrna Bucasas: I'm from Kekaha, Hawaiian Homes. I did stay at KC with my family. For Hawaiians to come in Kauai to stay overnight is so expensive. So I would give KC a "5". But one thing that disturbed me this morning was to see green shirts and red shirts. We all Hawaiians. We need to learn to work together. We should be all raising each other up—and pushing ourselves forward. I hope you don't mind, I'm from a different community. This is in the middle of the community, but you all need to work together. There's so many factions in this community; you all need to work together for one thing...for the benefit of all of us.
15. Sherri Cummings: I am the yellow shirt wearing red today. I am the Vice-President of the AHHA and I take full responsibility for endorsing this project. Regarding the license, that's the last thing you have to worry about. That land has been barbed wire and we all were ashamed when we used to play soccer down there and we'd run by the area with just trees and everything else we in there. IN 2008 where there were 4-5 teenaged suicides. How is that project funded? How many grants were applied, how many awarded? We bought and built the tent-alows. The first year, when we built our canoe club due to the suicides. The next year, our 12 year olds won. They had the opportunity to go to Keehi Lagoon and a Kailua canoe club hosted us and the girls had the opportunity to be in a

koa canoe. They took care of us. And there will be a time when the Statewide association will come to Anahola and we have to host them. We need a piece of property to put our canoes. We took pohaku painted them white put them around the canoes. We could say when your kids are with us they are safe. It is true that this project is so divisional. We couldn't put in permanent structures because of the Dept rules and regulations. We don't put nothing under the ground. We're not doing anything different. When you go to other beach parks, where does the water go? Same thing. I take responsibility for not coming to talk to you guys. That's our fault. But don't stop our inherent right to be able to do this. I apologize for coming at this in a way that we shouldn't have, but let's go forward. Where did our name come from? It was from Leina'ala Heine who said every island should have a piko a gathering place where kumu can gather. She meant kumu hula, but we thought kumu could be people who teach. That's what this is about. I've seen emails, but I've never seen any threatening email. If you have questions, ask us.

16. Kahala Ho'omanawanui: I feel KC benefits Anahola greatly. I've witnessed what the place used to be and have even participated in those activities, but as a mother, I refuse to have my children go through that. As a community we can stop it so it doesn't go to the next generation. As general manager, I'm asking everyone to help us. Come together, help me, help the community.
17. Kamane Hoomanawanui: cited geneology. When we were young, we were squatting in the Quonset hut. When there was all the arrests happening all over, we were the kids crying on the side. I understand why these things happen. When we got our Hawaiian Home Lands we got it on the Aliomanu side so we had to walk through the beach area. The scariest area was having to cross Anahola River when it was flowing. Today, I work for the DLNR in the State Historic Preservation Division as a burial specialist. I went away and got educated, but I'm back. If there is 'iwi problems at Kumu Camp, I'm here to help. Come see me. There has been no holes dug yet. I give it 100% because I support the community. This is one of many projects that we need to help each other on.
18. 18th Speaker: I wanted to add my concern for burials at KC. Through family lineage, we know that 'iwi is buried in that area. We need to honor their spirit. We need to put a 'ahu there, make it pretty. Another apology that is needed is to talk to the people that live in the village.

Aila: what I heard today was an amazing desire to move forward. We want to ask if anyone wants to participate in this process going forward, or at least start talking.

19. Kipukai Kualii'i: As the president of AHHA, I wanted to say mahalo for everyone coming today. As far as moving forward, we're all volunteers and we're all busy. Robin wanted to be here today too, but she's in Honolulu. Our meetings are always open. Everyone is doing good work, so instead of criticizing each other, we should help each other. We're mostly volunteers. You hear about Robin, because she's the one writing the grants, doing a lot of work. I want to thank all the board members for being here today.
20. 20th Speaker: I'm here mainly to see what's going on with KC and recently became an architect so I wanted to see about how the permits work. I found out that DHHL has a different procedure when it comes to the county planning department, they just stamp it approved. So then my issue became, what entity enforces that the buildings are built to code, because that's what I do. After talking with DHHL, I've learned that you were given a temporary permit so you can't put in permanent

structures. It seems that it's not fair to be exempt from the county because we're paying county taxes. The KC, I think it's great—it's the first time I went down there. It's neat but the structures aren't permanent and could fly away. There's so much opportunity for everyone to come together, to work together, to practice our culture and pass it on to our kids.

21. 21st Speaker: Who is Hawaiian Homes to do this? We have the birth right to go there. We don't need Hawaiian Home Lands. They're laughing at us—since we're fighting each other. It doesn't matter who has the lease, we can take care of the 'aina anyway.

EXHIBIT F

KUMU CAMP BENEFICIARY CONSULTATION April 9, 2016

WRITTEN COMMENTS SUBMITTED AT THE MEETING

#	On a Scale of 1 to 5, how strongly do you support the Kumu Camp project and why?	What do you see are the social, cultural and economic impacts to you and your community	Questions and Comments
68	I do not support the current efforts of Kumu Camp. I support the intent of what Kumu Camp could be—a viable resource for kanaka community from 'opio to kupuna.	Addressing the impacts of having additional numbers utilizing the valuable resources. Kumu Camp not used for profit of visitors and exploiting the land/water.	Who is KC servicing? It seems when it started in 2008, the intention was focused on providing services to children and Anahola community and kupuna. Now, in 2014, it seems as a vacation rental for tourist and exploiting Anahola's precious resources. Adverse impacts on the Anahola Village community.
69	I do not support KC. I'm watching my community become divided.	More traffic, division of the people. What programs are being offered to the community?	Transparency of KC to Anahola community. Active programs—numbers of people served, income generated, number of people using (impacting) resources—traffic, fishing, camping, opala. Programs of the future—what else is KC planning? Services being offered? Who oversees productivity? Who does KC keep accountable to?
70	"0" no support for existing program "5" for the concept	Social: huge!! Dissension among the Hawaiians and non-Hawaiians and those that disagree with KC. Cultural: None Economic: none to the greater Anahola community. Solutions: move KC to a different site. Shorter lease (2 years) with written assurances that <u>NO</u> commercial development take place that is not approved by DHHL and All of Us. And that the AHA Moku be consulted on ALL natural resource issues!!	Relocate the profit arm of KC—the vacation rental stuff needs to stop!
71	Look what happened with the solar farm monstrosity. KC has no community input.	It's a great idea. Just R.D. did it alone—no community input, etc. etc. etc. She is dangerous—will not join AHHA—they only want people that don't oppose R.D. Heard it from AHHA officer's mouth—now she's going after the school.	Do not want it shut down but do not want 25 year lease. Not to HCDC, CNHA, AHHA. Look what happened to solar farm—monstrous—we weren't informed.
72	100% If "5" is best, then a "5"	It helps unite into a community. Very important because community and other groups can hold sports tournaments, cultural retreats, and acquire experience and expertise in administering	

Kumu Camp Beneficiary Consultation
April 9, 2016
Written Comments Submitted on Comment Sheets

#	On a Scale of 1 to 5, how strongly do you support the Kumu Camp project and why?	What do you see are the social, cultural and economic impacts to you and your community	Questions and Comments
		such an enterprise. It also reduced/eliminated criminal activity.;	
73	"5" Healthy fun activities. Bringing the community together.	Volleyball tournaments, school retreats, learning the old Hawaiians ways of living. Benefits all of the community within Anahola and the community of Kauai.	
74	"5" It's a positive place for our community. I run community volleyball tournaments about 4 times a year there.	Family coming together in a drug free and safe environment. Also it's beautiful.	
75	"3" you must be any blood quantum of Hawaiian to use the camp. The funds <u>must</u> stay within the organizations to continue with improvements and maintain compliance with all state and federal regulations.	New changes, new ideas, new growth. Don't know about our economic benefits other than fees go back to keep project running in the most beneficial way for our keiki, kupuna, and all of us.	Today, I observed, families within families agree to disagree. I think everyone wants the same plan: to keep KC area for the Hawaiian people. So the users of the property should be limited to Hawaiians, any blood quantum, who need to comply with rules of the property. All individuals <u>who qualify</u> to be on the AHHA or HCDC committee should be given the opportunity to be <u>voted</u> into office. Terms for office should be limited to 2 years.
76	"5" because the land is being malama for the Hawaiian community and beneficiary.	Because I live right next to it, and know it has been a good place for beneficiaries to gather.	Health Dept. should do a reading of the water from the river to the ocean to see if there is any cesspool leakage before KC's septic system is approved.
77	"0"		My recommendation is for the Board to have a governing body, to run KC, making it a place for the community to benefit, giving out school supplies, paying for other programs besides sports. All areas would like to see a report.
78	"0" I need to see more people involved from both sides.	None. I want to see how this is going to benefit me as a beneficiary and the community.	
79	"0" Seven (7) people in my house <u>do not support KC.</u>	None. No benefits for me and my family who live in the village. It has caused pilikia in this place where I live!	Mr. Aila, you asked "How can we fix it?" Move KC out to another location.
80			I support Ipo Kauhane-Torio, Luella Lemn's testimony. Ho'olokahi the community. Change it to a plan that the community will build and manage. Give the lease to a community task force. Ho'olokahi, Pono, People rule.
81	"0" Object strongly.	None. Increased pollution on land and sea, not acceptable.	

*Kumu Camp Beneficiary Consultation
April 9, 2016
Written Comments Submitted on Comment Sheets*

#	On a Scale of 1 to 5, how strongly do you support the Kumu Camp project and why?	What do you see are the social, cultural and economic impacts to you and your community	Questions and Comments
82	"5" because the area has been maintained so that it is "policed" and it is no longer a haven for illegal activities.	The community now has another option for family gathering, camping. Opportunity to share our Hawaiian culture and employment.	
83	"0" I don't support it because Robin Danner did not involve community when planning this out. She picks and chooses her own family to run her projects. She is NOT PONO. She is self-building and just using our community to benefit herself.	None.	If this people are able to acquire a License, why can't other people (beneficiaries) be able to use land areas for doing projects such as these?
84	"1" because more people bring pollution. I miss how things used to be when Anahola Beach wasn't exploited.		No KC. Give us back our beach.
85	"5" AHHA has taken a wasteland filled with debris and fallen trees and improved it with camp buildings, cultural areas, sports facilities, that provides a wholesome, drug free environment for families.	KC is an effort by a nonprofit Hawaiian association to make useful land that was wasted. Families may come to the camp for enjoyment, practice cultural activities to learn about the 'aina and kai. Any profit from the camp goes to youth programs. KC keeps a great beach clean and usable.	

#1

June Sekioka
397A Wailana Rd., Kapaa, HI 96746

May 4, 2016

Department of Hawaiian Home Lands
Attn: Planning Office
P.O. Box 1879
Honolulu, HI 96805

RE: Extended lease for Kumu Camp

Aloha,

I am a retired educator and a non-Hawaiian who cares about the well-being of Native Hawaiians. I had a wonderful opportunity to work with the teachers of Ni'ihau and with Native Hawaiians and part Hawaiians during my tenure at Kaua'i Community College.

What I learned from them is their culture is one of sharing, caring for the *aina*, respecting their elders, and being *pono*. Ni'ihau is a special place where the ills of society rarely impact the natives due partly to the diligence of the Robinson family and the *kupuna*. Unfortunately, the rest of the islands do not have the isolation that protects Ni'ihau. Consequently, the Native Hawaiians here on Kaua'i are exposed to drugs, dysfunctional family situations, and criminal activities.

In the recent past, there were multiple suicides by youth in Anahola, and a murder committed there by a young Anahola male (Grandson of AHHA's former president) relating to drugs. There was much concern over these occurrences, and the Anahola community rallied to combat these tragic events. KKOA sponsors a family movie night, Ka Hale Pono provided educational and health workshops, Weed and Seed programs were made available to the community, and Ka Hale Pono continues to host the annual Prince Kūhiō Day celebration, school supply drive for K-12 graders, and food drive for the homebound *kupuna*. The Farmers Hui will soon open a market. It is really nice to see these organizations pitch in to elevate the Anahola community. There is *lōkahi*, *kōkua*, *ho'omana*, respect and honor of elders, *aloha*, and *pono* exhibited in their involvement with the community.

I am, however, very disappointed with Anahola Hawaiian Homes Association (AHHA). In 2010, they convinced Kaua'i Community College that they represented Anahola and, thus, was given the Ka Hale Pono building. I was surprised that AHHA did this because they already had two buildings they could have used. I didn't like their "takeover" maneuver. Prior to the takeover, the Ka Hale Pono building was alive with health and educational workshops for the youth and adults of Anahola. There hasn't been much activity in that building since the takeover by AHHA. Currently, the building is used for storage, I was told. *Auwē!*

1

Another situation that displeased me about AHHA is the takeover of the community kitchen built for community use. I understand that it is currently used as a cafe/restaurant, which makes it difficult for general use by the community. LaFrance Kapaka Arboleda would be very unhappy should she have lived to see her community kitchen initiative used in this manner. It was she and her volunteers who conducted a survey that showed that the Anahola residents desired a community kitchen. Isn't it interesting that the coordinator of the HUD grant for the community kitchen is the current AHHA president?

Recently, Camp Faith was shut down. If AHHA really cared for the people of Anahola, that location would have been an ideal place for the troubled youth of Anahola. It is a serene place where hope could be instilled, rehabilitation could be provided, and the Hawaiian culture practiced. It was a place of worship and spirituality...that is what was needed. I wonder if Camp Faith's closure was initiated by AHHA and its affiliates?

I encourage the Planning Office to really research the intent of Kumu Camp and the parties involved in this endeavor. Are they *pono* in their dealings, do they value *lōkahi* and *kōkua*, do they share with the community, do they do things with *aloha*, and is their mission pure? It is really disrespectful to build near *iwi* dunes, don't you think so? I strongly dislike the commercial nature of Kumu Camp. The essence of the Hawaiian culture and spirit diminish when outsiders move in. There has been much unhappiness from the onset of the Kumu Camp project. (Confrontation by Robin Danner with locals regarding the blockage of the road to the beach, continual objections from the locals, and a petition to close Kumu Camp.)

Please consider the ramifications of a long term lease for Kumu Camp. Who will be pleased and will benefit the most from this project? I believe it will not be the beneficiaries. The beneficiaries have entrusted you with the responsibility of making a wise and *pono* decision that will protect their well-being, their lifestyle, and their *aina*.

I believe we must protect the Native Hawaiians from being ousted from what they once enjoyed and loved. They warrant your protection. I write this because I care deeply for the Native Hawaiians, not only in Anahola but everywhere.

Mahalo for letting me share my thoughts and concerns.

Sincerely,



June Sekioka

cc: Hawaiian Homes Commissioners

2

DHHL
PLANNING OFFICE

2016 MAY -6 PM 2:39

May 2, 2016

Department of Hawaiian Home Lands
Attn: Planning Office
P.O. Box 1879
Honolulu, Hawai'i 96805

Re: HHC Beneficiary Consultation on Kumu Camp 04/09/2016

Aloha DHHL Planning Office,

I humbly write this letter in strong opposition of the location that the Kumu Camp project presently sits. Since 2012, the Anahola sand dune burial grounds (campground development known as Kumu Camp) has created unnecessary controversy and dissent in our community. The Anahola Hawaiian Homes Association (AHHA)/Homestead Community Development Corporation (HCDC) has been operating without regards or concerns of the residents, beneficiaries, and to the laws and regulations that protect our land, water, and culture. Who is accountable for enforcing the laws? Where did our iwi kupuna go? Who is responsible should a tree fall on the tentalows? Why was the developer allowed to develop a camp project in area site known as iwi kupuna in the first place?

I respectfully recommend that the Hawaiian Homes Commission not approve any long-term lease request with AHHA/HCDC for the current site until at such time the location of the Kumu Camp Project is relocated to an environment that is safe to our beneficiaries and neighbors. The trees that surround the campsite are old and pose a danger to our beneficiaries.

As a resident and beneficiary of Anahola, the Anahola Bay area should first and foremost be a direct benefit to the residents of Anahola and not advertised for commercial use as vacation rentals for island visitors and visitors from afar. Please see attached links.

https://www.tripadvisor.com/Hotel_Review-g60609-d4759076-Reviews-Kumu_Camp_at_the_Anahola_Beach_Retreat-Anahola_Kauai_Hawaii.html

<https://www.vrbo.com/610124>

http://thegardenisland.com/news/local/kumu-camp-opens-in-anahola/article_1f6ccc24-2cc6-11e3-970e-001a4bcf887a.html

<http://www.photoshow.com/watch/ev8pJ4Kg>

With strangers roaming on our streets and beaches in our community it poses danger to Anahola residents, kupuna, and keiki. With the influx of outsiders, there are more opportunities for theft and adverse situations to occur.

#2

The camp staff and members of the organization have bullied neighbors, beneficiaries, and residents on the beach, along the Anahola River next to Camp Faith, and for using Poha Road on which the proposed project is located as an entrance. Island residents use this public road to access the beach to a popular surf spot known as "middles."

I highly urge that if the location is not changed, then a long-term lease should be denied. The residents of Anahola, especially the beneficiaries, should have their aina protected from commercial use. Kumu Camp has not demonstrated that it is a haven for troubled youth nor a nurturing site for our culture.

Mahalo nui loa,



Lorna (La) Contrades
P.O. Box 30841
Anahola, HI 96703

Cc: Hawaiian Homes Commissioners

#3

To whom it may concern,

I would like to take this opportunity to commend your outstanding work you and your staff is doing for Kumu Camp. As a result of that my family and i comes here every weekend to enjoy the lovely sound of the beach an quite yet comfortable atmosphere. The community is so pleased and happy that Kumu Camp supports our kids and give back to the community. like our softball and baseball teams ect. And also manger Kahala is outstanding she maintains a professional attitude and quickly resolves every problem. The quality ,integrity and timeless of Kumu Camp do not go unnoticed and is greatly appreciated by the community...

Sincerely,

Mr&Mrs. Ganotisi

ITEM NO
6-1

1) HHL REC'D 4/09/2016
ANAHOLA, KAUAH

#4

To whom it may concern:

I would like to begin by saying thank you to all the nice people who make Kumu Camp the amazing campground that it is. The facilities are clean, the rooms are comfortable and the family atmosphere is friendly and welcoming. Not to mention the beautiful beach front view. I have come to Kumu Camp in times that I had to get out of the rain and the staff has always been ~~to help~~ very helpful and accomodating. I live on the island and this is definitely one of the favorite hangout spots. The way it's set up feels like a community and it's super cool! Thanks for all the aloha!

Sincerely,
Aaran, Becca and Ali'ia

ITEM NO. G-1

DHHL REC'D 4/09/2016
ANALYST, KAUI

#5 3/20/14

Hi my name is Tiana Cummings-Dahle.
I'm a homesteader & support Kumu
Camp. I believe that Kumu Camp
is going to be good for the
community by supporting ~~our~~ our
youth activities. Also with all the
Aloha they give to our community.

Mahalo
Tiana Cummings-Dahle

DHHL REC'D 4/09/2016
ANAHOLA, KAUAI

#6 3/29/16

Hi my name is: Mapuana Pa
And I support Kumu Camp 100%
And I believe that this camp
is gonna be good for the community
now, plenty Aloha I feel in
the area.

Also my husband helped out
cleaning Kumu Camp & Camp
Thynda make this Camp site ^{faith}
as beautiful as Anahola

Mahalo Nui
Mapuana Pa

DHHL REC'D 4/09/2016
ANAHOLA, KAUAI

#7

Aloha My Name is
Pua Reyes And i Support
Kumu Kampa.

Im a Homesteader

Maanalo Nui Ioa
Pua Reyes.

ITEM NO. 61
DHH

REC'D 4/09/2016
ANAHOLA KAHAI

#8

3/29/16

Aloha,

I am a homesteader in
Anahola and is in full support
of Kumu Camp. I feel Kumu
Camp is a great addition to
the Anahola Community and all
that they do for the youth
of our community

Mahalo

Kāhealani Pa

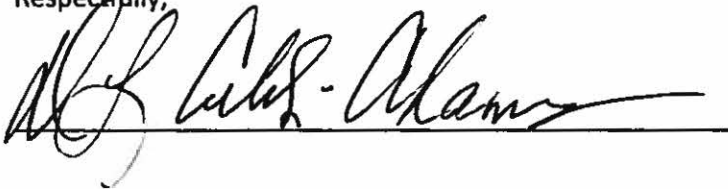
ITEM
D#HL REC'D 4/09/2016 DJ
G-1

Attn: DHHL and all those concerned

9

D.L. Cobb-Adams, am submitting this letter to officially notify the Department of Hawaiian Homelands that I oppose kumu camp and am in opposition to the proposed 25 year lease that AHHA, HCDC, and Robin Danner are petitioning for at Anahola beach. Kumu camp and AHHA are self-serving and do not reflect the community's best interests in Anahola or the large majority of residents who oppose having a vacation rental project and commercial activity on our beach and fishing grounds. The ocean is a large part of the subsistence resources we need to survive. We as a community and individually I would like to see that area turned into a park for local residents, not a vacation rental operation bringing in up to 16,000-18,000 visitors every year. Our aina can't sustain that. *That kind of influx of tourists will destroy our way of life, change the ano of our community, over run our resources and have a huge negative impact on our community.* We hear by respectfully request the department of Hawaiian Home Lands and chair Masagatani reject the 25 year lease for kumu camp vacation rentals, remove the illegally built buildings and septic system within the special management zone, and restore the area and trees to a native ecosystem suitable for our community to use as a park and a place for Anahola native practitioners and ohana to live and grow together.

Respectfully,



Attn: DHHL and all those concerned

#10

I, Valerie Hayes (Kauo), am submitting this letter to officially notify the Department of Hawaiian Homelands that I oppose kumu camp and am in opposition to the proposed 25 year lease that AHHA, HCDC, and Robin Danner are petitioning for at Anahola beach. Kumu camp and AHHA are self-serving and do not reflect the community's best interests in Anahola or the large majority of residents who oppose having a vacation rental project and commercial activity on our beach and fishing grounds. The ocean is a large part of the subsistence resources we need to survive. We as a community and individually I would like to see that area turned into a park for local residents, not a vacation rental operation bringing in up to 16,000-18,000 visitors every year. Our aina can't sustain that. That kind of influx of tourists will destroy our way of life, change the ano of our community, over run our resources and have a huge negative impact on our community. We hear by respectfully request the department of Hawaiian Home Lands and chair Masagatani reject the 25 year lease for kumu camp vacation rentals, remove the illegally built buildings and septic system within the special management zone, and restore the area and trees to a native ecosystem suitable for our community to use as a park and a place for Anahola native practitioners and ohana to live and grow together.

Respectfully,

Valerie Hayes (Kauo)

#11
Attn: DHHL and all those concerned

I Mona Ah Loo, am submitting this letter to officially notify the Department of Hawaiian Homelands that I oppose kumu camp and am in opposition to the proposed 25 year lease that AHHA, HCDC, and Robin Danner are petitioning for at Anahola beach. Kumu camp and AHHA are self-serving and do not reflect the community's best interests in Anahola or the large majority of residents who oppose having a vacation rental project and commercial activity on our beach and fishing grounds. The ocean is a large part of the subsistence resources we need to survive. We as a community and individually I would like to see that area turned into a park for local residents, not a vacation rental operation bringing in up to 16,000-18,000 visitors every year. Our aina can't sustain that. *That kind of influx of tourists will destroy our way of life, change the ano of our community, over run our resources and have a huge negative impact on our community.* We hear by respectfully request the department of Hawaiian Home Lands and chair Masagatani reject the 25 year lease for kumu camp vacation rentals, remove the illegally built buildings and septic system within the special management zone, and restore the area and trees to a native ecosystem suitable for our community to use as a park and a place for Anahola native practitioners and ohana to live and grow together.

Respectfully,

Mona Ah Loo

Attn: DHHL and all those concerned

#12

I Keone Ah Loo am submitting this letter to officially notify the Department of Hawaiian Homelands that I oppose kumu camp and am in opposition to the proposed 25 year lease that AHHA, HCDC, and Robin Danner are petitioning for at Anahola beach. Kumu camp and AHHA are self-serving and do not reflect the community's best interests in Anahola or the large majority of residents who oppose having a vacation rental project and commercial activity on our beach and fishing grounds. The ocean is a large part of the subsistence resources we need to survive. We as a community and individually I would like to see that area turned into a park for local residents, not a vacation rental operation bringing in up to 16,000-18,000 visitors every year. Our aina can't sustain that. *That kind of influx of tourists will destroy our way of life, change the ano of our community, over run our resources and have a huge negative impact on our community.* We hear by respectfully request the department of Hawaiian Home Lands and chair Masagatani reject the 25 year lease for kumu camp vacation rentals, remove the illegally built buildings and septic system within the special management zone, and restore the area and trees to a native ecosystem suitable for our community to use as a park and a place for Anahola native practitioners and ohana to live and grow together.

Respectfully,

Keone Ah Loo

Attn: DHHL and all those concerned

#13

I Punohu Kekaula Iua III am submitting this letter to officially notify the Department of Hawaiian Homelands that I oppose kumu camp and am in opposition to the proposed 25 year lease that AHHA, HCDC, and Robin Danner are petitioning for at Anahola beach. Kumu camp and AHHA are self-serving and do not reflect the community's best interests in Anahola or the large majority of residents who oppose having a vacation rental project and commercial activity on our beach and fishing grounds. The ocean is a large part of the subsistence resources we need to survive. We as a community and individually I would like to see that area turned into a park for local residents, not a vacation rental operation bringing in up to 16,000-18,000 visitors every year. Our aina can't sustain that. That kind of influx of tourists will destroy our way of life, change the ano of our community, over run our resources and have a huge negative impact on our community. We hear by respectfully request the department of Hawaiian Home Lands and chair Masagatani reject the 25 year lease for kumu camp vacation rentals, remove the illegally built buildings and septic system within the special management zone, and restore the area and trees to a native ecosystem suitable for our community to use as a park and a place for Anahola native practitioners and ohana to live and grow together.

Respectfully,

Punohu Kekaula Iua III

2:09 pm DHHL REC'D 4/09/12

Attn: DHHL and all those concerned

#149

I Jason K. Marroto, am submitting this letter to officially notify the Department of Hawaiian Homelands that I oppose kumu camp and am in opposition to the proposed 25 year lease that AHHA, HCDC, and Robin Danner are petitioning for at Anahola beach. Kumu camp and AHHA are self-serving and do not reflect the community's best interests in Anahola or the large majority of residents who oppose having a vacation rental project and commercial activity on our beach and fishing grounds. The ocean is a large part of the subsistence resources we need to survive. We as a community and individually I would like to see that area turned into a park for local residents, not a vacation rental operation bringing in up to 16,000-18,000 visitors every year. Our aina can't sustain that. That kind of influx of tourists will destroy our way of life, change the ano of our community, over run our resources and have a huge negative impact on our community. We hear by respectfully request the department of Hawaiian Home Lands and chair Masagatani reject the 25 year lease for kumu camp vacation rentals, remove the illegally built buildings and septic system within the special management zone, and restore the area and trees to a native ecosystem suitable for our community to use as a park and a place for Anahola native practitioners and ohana to live and grow together.

Respectfully,

Jason K. Marroto

2:09 PM DHHL REC'D 4/09/16 NY

Attn: DHHL and all those concerned

4,5

I, Maliahani Marotte, am submitting this letter to officially notify the Department of Hawaiian Homelands that I oppose kumu camp and am in opposition to the proposed 25 year lease that AHHA, HCDC, and Robin Danner are petitioning for at Anahola beach. Kumu camp and AHHA are self-serving and do not reflect the community's best interests in Anahola or the large majority of residents who oppose having a vacation rental project and commercial activity on our beach and fishing grounds. The ocean is a large part of the subsistence resources we need to survive. We as a community and individually I would like to see that area turned into a park for local residents, not a vacation rental operation bringing in up to 16,000-18,000 visitors every year. Our aina can't sustain that. That kind of influx of tourists will destroy our way of life, change the ano of our community, over run our resources and have a huge negative impact on our community. We hear by respectfully request the department of Hawaiian Home Lands and chair Masagatani reject the 25 year lease for kumu camp vacation rentals, remove the illegally built buildings and septic system within the special management zone, and restore the area and trees to a native ecosystem suitable for our community to use as a park and a place for Anahola native practitioners and ohana to live and grow together.

Respectfully,

Maliahani Marotte

Attn: DHHL and all those concerned

#16

I Kevin Kaleiohi, am submitting this letter to officially notify the Department of Hawaiian Homelands that I oppose kumu camp and am in opposition to the proposed 25 year lease that AHHA, HCDC, and Robin Danner are petitioning for at Anahola beach. Kumu camp and AHHA are self-serving and do not reflect the community's best interests in Anahola or the large majority of residents who oppose having a vacation rental project and commercial activity on our beach and fishing grounds. The ocean is a large part of the subsistence resources we need to survive. We as a community and individually I would like to see that area turned into a park for local residents, not a vacation rental operation bringing in up to 16,000-18,000 visitors every year. Our aina can't sustain that. *That kind of influx of tourists will destroy our way of life, change the ano of our community, over run our resources and have a huge negative impact on our community.* We hear by respectfully request the department of Hawaiian Home Lands and chair Masagatani reject the 25 year lease for kumu camp vacation rentals, remove the illegally built buildings and septic system within the special management zone, and restore the area and trees to a native ecosystem suitable for our community to use as a park and a place for Anahola native practitioners and ohana to live and grow together.

Respectfully,

Kevin Kaleiohi

2:09 PM
2/09/16 DHHL REC'D 4/09/16/16

Attn: DHHL and all those concerned

#17

Peter K. Contreras, am submitting this letter to officially notify the Department of Hawaiian Homelands that I oppose kumu camp and am in opposition to the proposed 25 year lease that AHHA, HCDC, and Robin Danner are petitioning for at Anahola beach. Kumu camp and AHHA are self-serving and do not reflect the community's best interests in Anahola or the large majority of residents who oppose having a vacation rental project and commercial activity on our beach and fishing grounds. The ocean is a large part of the subsistence resources we need to survive. We as a community and individually I would like to see that area turned into a park for local residents, not a vacation rental operation bringing in up to 16,000-18,000 visitors every year. Our aina can't sustain that. *That kind of influx of tourists will destroy our way of life, change the ano of our community, over run our resources and have a huge negative impact on our community.* We hear by respectfully request the department of Hawaiian Home Lands and chair Masagatani reject the 25 year lease for kumu camp vacation rentals, remove the illegally built buildings and septic system within the special management zone, and restore the area and trees to a native ecosystem suitable for our community to use as a park and a place for Anahola native practitioners and ohana to live and grow together.

Respectfully,



Attn: DHHL and all those concerned

#18

I Shilo Pa, am submitting this letter to officially notify the Department of Hawaiian Homelands that I oppose kumu camp and am in opposition to the proposed 25 year lease that AHHA, HCDC, and Robin Danner are petitioning for at Anahola beach. Kumu camp and AHHA are self-serving and do not reflect the community's best interests in Anahola or the large majority of residents who oppose having a vacation rental project and commercial activity on our beach and fishing grounds. The ocean is a large part of the subsistence resources we need to survive. We as a community and individually I would like to see that area turned into a park for local residents, not a vacation rental operation bringing in up to 16,000-18,000 visitors every year. Our aina can't sustain that. *That kind of influx of tourists will destroy our way of life, change the ano of our community, over run our resources and have a huge negative impact on our community.* We hear by respectfully request the department of Hawaiian Home Lands and chair Masagatani reject the 25 year lease for kumu camp vacation rentals, remove the illegally built buildings and septic system within the special management zone, and restore the area and trees to a native ecosystem suitable for our community to use as a park and a place for Anahola native practitioners and ohana to live and grow together.

Respectfully,

Shilo Pa

2:09 PM DHHL REC'D 4/29/2

Attn: DHHL and all those concerned

19

I, Jan Westphal, am submitting this letter to officially notify the Department of Hawaiian Homelands that I oppose kumu camp and am in opposition to the proposed 25 year lease that AHHA, HCDC, and Robin Danner are petitioning for at Anahola beach. Kumu camp and AHHA are self-serving and do not reflect the community's best interests in Anahola or the large majority of residents who oppose having a vacation rental project and commercial activity on our beach and fishing grounds. The ocean is a large part of the subsistence resources we need to survive. We as a community and individually I would like to see that area turned into a park for local residents, not a vacation rental operation bringing in up to 16,000-18,000 visitors every year. Our aina can't sustain that. *That kind of influx of tourists will destroy our way of life, change the ano of our community, over run our resources and have a huge negative impact on our community.* We hear by respectfully request the department of Hawaiian Home Lands and chair Masagatani reject the 25 year lease for kumu camp vacation rentals, remove the illegally built buildings and septic system within the special management zone, and restore the area and trees to a native ecosystem suitable for our community to use as a park and a place for Anahola native practitioners and ohana to live and grow together.

Respectfully,

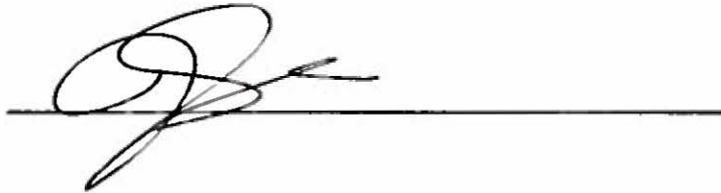
Jan Westphal 4/9/2016

Attn: DHHL and all those concerned

#2a

I, Julia Silva, am submitting this letter to officially notify the Department of Hawaiian Homelands that I oppose kumu camp and am in opposition to the proposed 25 year lease that AHHA, HCDC, and Robin Danner are petitioning for at Anahola beach. Kumu camp and AHHA are self-serving and do not reflect the community's best interests in Anahola or the large majority of residents who oppose having a vacation rental project and commercial activity on our beach and fishing grounds. The ocean is a large part of the subsistence resources we need to survive. We as a community and individually I would like to see that area turned into a park for local residents, not a vacation rental operation bringing in up to 16,000-18,000 visitors every year. Our aina can't sustain that. That kind of influx of tourists will destroy our way of life, change the ano of our community, over run our resources and have a huge negative impact on our community. We hear by respectfully request the department of Hawaiian Home Lands and chair Masagatani reject the 25 year lease for kumu camp vacation rentals, remove the illegally built buildings and septic system within the special management zone, and restore the area and trees to a native ecosystem suitable for our community to use as a park and a place for Anahola native practitioners and ohana to live and grow together.

Respectfully,



ITEM NO. G-1

2:29 pm DHHL REC'D 4/09/2012 JH

#21

Attn: DHHL and all those concerned

I Justin Zen, am submitting this letter to officially notify the Department of Hawaiian Homelands that I oppose kumu camp and am in opposition to the proposed 25 year lease that AHHA, HCDC, and Robin Danner are petitioning for at Anahola beach. Kumu camp and AHHA are self-serving and do not reflect the community's best interests in Anahola or the large majority of residents who oppose having a vacation rental project and commercial activity on our beach and fishing grounds. The ocean is a large part of the subsistence resources we need to survive. We as a community and individually I would like to see that area turned into a park for local residents, not a vacation rental operation bringing in up to 16,000-18,000 visitors every year. Our aina can't sustain that. That kind of influx of tourists will destroy our way of life, change the ano of our community, over run our resources and have a huge negative impact on our community. We hear by respectfully request the department of Hawaiian Home Lands and chair Masagatani reject the 25 year lease for kumu camp vacation rentals, remove the illegally built buildings and septic system within the special management zone, and restore the area and trees to a native ecosystem suitable for our community to use as a park and a place for Anahola native practitioners and ohana to live and grow together.

Respectfully,



2:29 PM DHHL REC'D 4/09/2016 AK

Attn: DHHL and all those concerned

#22

I Anthony Apuna, am submitting this letter to officially notify the Department of Hawaiian Homelands that I oppose kumu camp and am in opposition to the proposed 25 year lease that AHHA, HCDC, and Robin Danner are petitioning for at Anahola beach. Kumu camp and AHHA are self-serving and do not reflect the community's best interests in Anahola or the large majority of residents who oppose having a vacation rental project and commercial activity on our beach and fishing grounds. The ocean is a large part of the subsistence resources we need to survive. We as a community and individually I would like to see that area turned into a park for local residents, not a vacation rental operation bringing in up to 16,000-18,000 visitors every year. Our aina can't sustain that. That kind of influx of tourists will destroy our way of life, change the ano of our community, over run our resources and have a huge negative impact on our community. We hear by respectfully request the department of Hawaiian Home Lands and chair Masagatani reject the 25 year lease for kumu camp vacation rentals, remove the illegally built buildings and septic system within the special management zone, and restore the area and trees to a native ecosystem suitable for our community to use as a park and a place for Anahola native practitioners and ohana to live and grow together.

Respectfully,



23

Attn: DHHL and all those concerned

I Teeana K. Valpoon, am submitting this letter to officially notify the Department of Hawaiian Homelands that I oppose kumu camp and am in opposition to the proposed 25 year lease that AHHA, HCDC, and Robin Danner are petitioning for at Anahola beach. Kumu camp and AHHA are self-serving and do not reflect the community's best interests in Anahola or the large majority of residents who oppose having a vacation rental project and commercial activity on our beach and fishing grounds. The ocean is a large part of the subsistence resources we need to survive. We as a community and individually I would like to see that area turned into a park for local residents, not a vacation rental operation bringing in up to 16,000-18,000 visitors every year. Our aina can't sustain that. *That kind of influx of tourists will destroy our way of life, change the ano of our community, over run our resources and have a huge negative impact on our community.* We hear by respectfully request the department of Hawaiian Home Lands and chair Masagatani reject the 25 year lease for kumu camp vacation rentals, remove the illegally built buildings and septic system within the special management zone, and restore the area and trees to a native ecosystem suitable for our community to use as a park and a place for Anahola native practitioners and ohana to live and grow together.

Respectfully,



2:29 PM DHHL REC'D 4/09/2012 ML

#24

Attn: DHHL and all those concerned

I Nona Nona-Espirito, am submitting this letter to officially notify the Department of Hawaiian Homelands that I oppose kumu camp and am in opposition to the proposed 25 year lease that AHHA, HCDC, and Robin Danner are petitioning for at Anahola beach. Kumu camp and AHHA are self-serving and do not reflect the community's best interests in Anahola or the large majority of residents who oppose having a vacation rental project and commercial activity on our beach and fishing grounds. The ocean is a large part of the subsistence resources we need to survive. We as a community and individually I would like to see that area turned into a park for local residents, not a vacation rental operation bringing in up to 16,000-18,000 visitors every year. Our aina can't sustain that. That kind of influx of tourists will destroy our way of life, change the ano of our community, over run our resources and have a huge negative impact on our community. We hear by respectfully request the department of Hawaiian Home Lands and chair Masagatani reject the 25 year lease for kumu camp vacation rentals, remove the illegally built buildings and septic system within the special management zone, and restore the area and trees to a native ecosystem suitable for our community to use as a park and a place for Anahola native practitioners and ohana to live and grow together.

Respectfully,



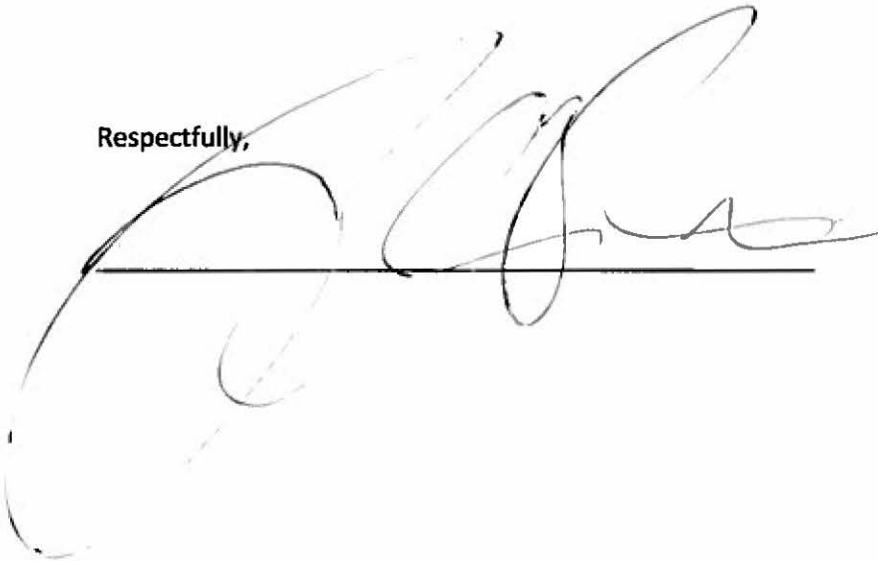
2:29 PM DHHL REC'D 4/09/2012 DK

Attn: DHHL and all those concerned

#25

I Thompson Aipa-Rivera, am submitting this letter to officially notify the Department of Hawaiian Homelands that I oppose kumu camp and am in opposition to the proposed 25 year lease that AHHA, HCDC, and Robin Danner are petitioning for at Anahola beach. Kumu camp and AHHA are self-serving and do not reflect the community's best interests in Anahola or the large majority of residents who oppose having a vacation rental project and commercial activity on our beach and fishing grounds. The ocean is a large part of the subsistence resources we need to survive. We as a community and individually I would like to see that area turned into a park for local residents, not a vacation rental operation bringing in up to 16,000-18,000 visitors every year. Our aina can't sustain that. That kind of influx of tourists will destroy our way of life, change the ano of our community, over run our resources and have a huge negative impact on our community. We hear by respectfully request the department of Hawaiian Home Lands and chair Masagatani reject the 25 year lease for kumu camp vacation rentals, remove the illegally built buildings and septic system within the special management zone, and restore the area and trees to a native ecosystem suitable for our community to use as a park and a place for Anahola native practitioners and ohana to live and grow together.

Respectfully,

A large, stylized handwritten signature in black ink, appearing to read 'Thompson Aipa-Rivera', written over a horizontal line.

2:29 PM DHHL REC'D 4/09/2016 

Attn: DHHL and all those concerned

#26

I Cody K. Valpoon, am submitting this letter to officially notify the Department of Hawaiian Homelands that I oppose kumu camp and am in opposition to the proposed 25 year lease that AHHA, HCDC, and Robin Danner are petitioning for at Anahola beach. Kumu camp and AHHA are self-serving and do not reflect the community's best interests in Anahola or the large majority of residents who oppose having a vacation rental project and commercial activity on our beach and fishing grounds. The ocean is a large part of the subsistence resources we need to survive. We as a community and individually I would like to see that area turned into a park for local residents, not a vacation rental operation bringing in up to 16,000-18,000 visitors every year. Our aina can't sustain that. That kind of influx of tourists will destroy our way of life, change the ano of our community, over run our resources and have a huge negative impact on our community. We hear by respectfully request the department of Hawaiian Home Lands and chair Masagatani reject the 25 year lease for kumu camp vacation rentals, remove the illegally built buildings and septic system within the special management zone, and restore the area and trees to a native ecosystem suitable for our community to use as a park and a place for Anahola native practitioners and ohana to live and grow together.

Respectfully,

Cody K. Valpoon

Attn: DHHL and all those concerned

*27

I AIWOHI, am submitting this letter to officially notify the Department of Hawaiian Homelands that I oppose kumu camp and am in opposition to the proposed 25 year lease that AHHA, HCDC, and Robin Danner are petitioning for at Anahola beach. Kumu camp and AHHA are self-serving and do not reflect the community's best interests in Anahola or the large majority of residents who oppose having a vacation rental project and commercial activity on our beach and fishing grounds. The ocean is a large part of the subsistence resources we need to survive. We as a community and individually I would like to see that area turned into a park for local residents, not a vacation rental operation bringing in up to 16,000-18,000 visitors every year. Our aina can't sustain that. *That kind of influx of tourists will destroy our way of life, change the ano of our community, over run our resources and have a huge negative impact on our community.* We hear by respectfully request the department of Hawaiian Home Lands and chair Masagatani reject the 25 year lease for kumu camp vacation rentals, remove the illegally built buildings and septic system within the special management zone, and restore the area and trees to a native ecosystem suitable for our community to use as a park and a place for Anahola native practitioners and ohana to live and grow together.

Respectfully,

AIWOHI

ITEM NO. G-1

2:29 PM DHHL REC'D 4/09/2012 *NA*

Attn: DHHL and all those concerned

#28

I Debra Kekaulua, am submitting this letter to officially notify the Department of Hawaiian Homelands that I oppose kumu camp and am in opposition to the proposed 25 year lease that AHHA, HCDC, and Robin Danner are petitioning for at Anahola beach. Kumu camp and AHHA are self-serving and do not reflect the community's best interests in Anahola or the large majority of residents who oppose having a vacation rental project and commercial activity on our beach and fishing grounds. The ocean is a large part of the subsistence resources we need to survive. We as a community and individually I would like to see that area turned into a park for local residents, not a vacation rental operation bringing in up to 16,000-18,000 visitors every year. Our aina can't sustain that. That kind of influx of tourists will destroy our way of life, change the ano of our community, over run our resources and have a huge negative impact on our community. We hear by respectfully request the department of Hawaiian Home Lands and chair Masagatani reject the 25 year lease for kumu camp vacation rentals, remove the illegally built buildings and septic system within the special management zone, and restore the area and trees to a native ecosystem suitable for our community to use as a park and a place for Anahola native practitioners and ohana to live and grow together.

Respectfully,

Debra Kekaulua

Attn: DHHL and all those concerned

#29

I Kamahu O, am submitting this letter to officially notify the Department of Hawaiian Homelands that I oppose kumu camp and am in opposition to the proposed 25 year lease that AHHA, HCDC, and Robin Danner are petitioning for at Anahola beach. Kumu camp and AHHA are self-serving and do not reflect the community's best interests in Anahola or the large majority of residents who oppose having a vacation rental project and commercial activity on our beach and fishing grounds. The ocean is a large part of the subsistence resources we need to survive. We as a community and individually I would like to see that area turned into a park for local residents, not a vacation rental operation bringing in up to 16,000-18,000 visitors every year. Our aina can't sustain that. That kind of influx of tourists will destroy our way of life, change the ano of our community, over run our resources and have a huge negative impact on our community. We hear by respectfully request the department of Hawaiian Home Lands and chair Masagatani reject the 25 year lease for kumu camp vacation rentals, remove the illegally built buildings and septic system within the special management zone, and restore the area and trees to a native ecosystem suitable for our community to use as a park and a place for Anahola native practitioners and ohana to live and grow together.

Respectfully,

Kamahu O

#30

Attn: DHHL and all those concerned

I Ken Burch, am submitting this letter to officially notify the Department of Hawaiian Homelands that I oppose kumu camp and am in opposition to the proposed 25 year lease that AHHA, HCDC, and Robin Danner are petitioning for at Anahola beach. Kumu camp and AHHA are self-serving and do not reflect the community's best interests in Anahola or the large majority of residents who oppose having a vacation rental project and commercial activity on our beach and fishing grounds. The ocean is a large part of the subsistence resources we need to survive. We as a community and individually I would like to see that area turned into a park for local residents, not a vacation rental operation bringing in up to 16,000-18,000 visitors every year. Our aina can't sustain that. That kind of influx of tourists will destroy our way of life, change the ano of our community, over run our resources and have a huge negative impact on our community. We hear by respectfully request the department of Hawaiian Home Lands and chair Masagatani reject the 25 year lease for kumu camp vacation rentals, remove the illegally built buildings and septic system within the special management zone, and restore the area and trees to a native ecosystem suitable for our community to use as a park and a place for Anahola native practitioners and ohana to live and grow together.

Respectfully,

Ken Burch

Attn: DHHL and all those concerned

#31

I, VERNON MARSHALL, am submitting this letter to officially notify the Department of Hawaiian Homelands that I oppose kumu camp and am in opposition to the proposed 25 year lease that AHHA, HCDC, and Robin Danner are petitioning for at Anahola beach. Kumu camp and AHHA are self-serving and do not reflect the community's best interests in Anahola or the large majority of residents who oppose having a vacation rental project and commercial activity on our beach and fishing grounds. The ocean is a large part of the subsistence resources we need to survive. We as a community and individually I would like to see that area turned into a park for local residents, not a vacation rental operation bringing in up to 16,000-18,000 visitors every year. Our aina can't sustain that. That kind of influx of tourists will destroy our way of life, change the ano of our community, over run our resources and have a huge negative impact on our community. We hear by respectfully request the department of Hawaiian Home Lands and chair Masagatani reject the 25 year lease for kumu camp vacation rentals, remove the illegally built buildings and septic system within the special management zone, and restore the area and trees to a native ecosystem suitable for our community to use as a park and a place for Anahola native practitioners and ohana to live and grow together.

Respectfully,

Vern Marshall

ITEM NO. G-1

2:29 PM DHHL REC'D 4/09/2011 DK

#32

Freitas Jr, Robert C

From: DHHL.Planning
Sent: Monday, April 11, 2016 9:55 AM
To: Freitas Jr, Robert C
Cc: Manuel, Kaleo L
Subject: FW: About the Anahola Beach Developers

From: Agnes Marti-Kini [mailto:keao@me.com]
Sent: Sunday, April 10, 2016 10:45 AM
To: DHHL.Planning <dhhl.planning@hawaii.gov>
Subject: Fwd: About the Anahola Beach Developers

From an anonymous Non-Hawaiian Anahola Resident homeowner who lives here half of the year. She is afraid that her opinion doesn't really matter. Here is her manao.

Does Ms Danner plan to put up a campground on Anahola Beach? We really, really don't need that! I don't understand her plan. I could not find any proposal on line on what she really proposes to do.

How much is the Homeland getting from her lease? Why do they need to lease the land at all? I thought it was a "Park" for day use. Are they short of funds? Maybe neighbors that oppose her could pitch in and clean up the area to show they do care.

I am all for cleaning up the area and not having ANY camping or driving on the beach (especially if it is a burial ground) or any misused of the land by having trash and broken down cars trash the hills and trails behind the Anahola Beach... But I am sure most Hawaiians do not agree with me, but being white I don't know how anything I say will matter.

I feel Anahola could be a really pristine nice area with out spending a lot of money and if the locals cared enough to really take care of the beautiful and really special place that I see it is...

When I spent time at my house I fill my garbage can up with trash I collected daily at the beach park next door. I do get frustrated with that. Not sure what else I can do when I am there. Homelands has intimidated me in the past, so I don't like talking to them.

I was not notified by mail about any proposed changes to the park, but I guess Homelands does not need to ask neighbors about what they are doing. In California you would have to send out notices to all surrounding neighbors to do anything. They would require environmental impact reports and public hearings and years of study...

ITEM NO. G-1

I think the "Park" could use some care and enforcing the current regulations and some respect for your neighbors and the land.
Thank you, Marguerite

32

From: Agnes Marti-Kini <keao@me.com>
To: Marguerite Casey <farenz@sbcglobal.net>
Sent: Sunday, April 10, 2016 9:32 AM
Subject: About the Anahola Beach Developers

Aloha Marguerite,

Robin Danner is an Alaskan transplant who moved to Anahola when she inherited her grandmothers Dept. of Hawaiian Homestead. She was a former banker and Washington lobbyist for the Alaskan pipeline and is a corporate leech. There is a whole website that exposes her antics in Alaska. She is trying to control and acquire Hawaiian Homestead Properties for corporate gain...mainly her own company which is HCDC, Homestead Community Development Corporation, by using the AHHA, Anahola Hawaiian Homestead Association, Board as a front for her dirty work. She did this type of thing in Alaska to the Native Indians there and they ran her out of town with guns I hear!! When she first tried to do that here she got beat up and her place got trashed. Then she hired locals to protect her and her interests and turned local Hawaiians against their own families and brothers. Now, she wants to turn our country Anahola beach into something we don't want....she lies to the news papers and talks a good talk, but her walk is dark and not pono....some people even say it is evil. She has sent emails that trashed our Charter School Kanuikapono, trashed the Farmer's KAF HUI Association, Trashed the Farmer's and Ranchers, AFARA, and KKOAA because these Anahola association leaders wouldn't buy into her corporate Funny Business. Kumu Camp is her biggest New 3 year Development and she uses her wealth to bully or buy people out. You can read what Joan Conrow, local journalist, exposes about Kumu Camp on her blog Eclectic. The list goes on, so because she just has a temporary right of entry from the DHHL, she is seeking a 25 year lease from them which will give them lots of time to turn our beach into a substandard trashy resort I fear!!!

I hope this gives you some background, but certainly read for yourself. There is only a 30 day window to act within.

Freitas Jr, Robert C

From: Agnes Marti-Kini <keao@me.com>
Sent: Sunday, April 10, 2016 1:03 PM
To: DHHL.Planning; Burrows-Nuuanu, Leatrice W; Kchin187
Cc: Masagatani, Jobie K; Aila Jr, William J; Manuel, Kaleo L; Albinio Jr, Peter K; Freitas Jr, Robert C; Duncan, Kaipo; Kamibayashi, Erna A; Rep. Derek Kawakami; Mayor@kauai.gov; dana@oha.org; DaMate, Leimana K; ghoozer@kauai.gov; Mason Chock
Subject: KauaiEclectic Musings: Kumu Camp "Glamping" in Anahola

DHHL LESSEE TESTIMONY ON KUMU CAMP

Dear Commissioners and DHHL Administrators,

For myself the holder of our DHHL Lease and my ohana of 27 who have live here at one time or another...we DO NOT want Kumu Camp to continue this particular lease venue for another 25 years. Kumu Camp was given 3 years to prove that they are worthy of this lease. Instead they have violated so many health and building codes and threatened and bullied their immediate neighbors and our community and associations physically and by emails to accept their program. They have verbalized intentions of developing our bay into a tourist attraction with boating, jet ski, paddle board, and other tourist activities on our river and bay. This bay and river is where we gather our food...fishermen here have hukilau and supply our community with fish not to mention all the individual fishermen who pole and net fish too. These activities will destroy our traditional way of life and our fishing grounds!!

In my opinion, they have not proven themselves worthy of a 25 year lease. Poor management, no consistent cultural programs, they are putting the DHHL in a position of "HIGH RISK" right now, should these yurts or tentaloos blow away and hit someone of a home or fall down and injure tourist who sleep in them or one of them drowns in the bay where many tourist have lost their lives already. There will be huge suits against the DHHL the State of Hawaii and the County...all it takes is just one mishap and millions of our beneficiary dollars will go down the drain. Are you willing to risk lives and our entitled funds for this one lease? Please Be Wise, an ounce of prevention is needed here. If this area is considered a flood zone, they will not even be able to get liability insurance. Also, the traffic situation of a constant flow of vehicles filled with people and visitors is making Anahola Rd and Poha Rd. a hazard to the existing residents and their keiki who traverse these roads daily, what a horrible intrusion on their peace village life this has been. On top of that, there is no EXITING road for large Emergency vehicles like fire trucks at Kumu Camp either. Hands Down..This is definitely a poor location for their enterprise. The concept of Kumu Camp is good, but they have had more than ample time now to prove to the community that this a good endeavor for all of the Community...Hawaiians and Non-Hawaiians alike. The project is not what they initially said it would be. Nearly 700 people signed a petition to say NO to Kumu Camp...please listen!

Please Read this link below from Joan Conrow, journalist on Kauai, former Anahola resident and Weep.

<http://kauaiecclectic.blogspot.com/2015/11/musings-glamping-in-anahola.html>

WIN-WIN SOLUTION:

A fair solution would be to offer them a new lease to RELOCATE KUMU CAMP's ILLEGAL VACATION RENTALS, turn them into viable secure camp houses and move them to a better place just up the road at Anahola Beach Park. This venue is directly across the bathrooms and lifeguard stand. There is a huge empty field there that the DHHL owns. This would be better venue for them...the beach access is amazing and safe for keiki, lots of space, great exposure, already existing facilities, a large accessible road for emergency vehicles, no residential traffic overload on Anahola Rd. or Poha Rd. and they will not be disturbing any residents or home owners either or polluting the river or kai with septic tank leech waste that will undoubtedly overflow or seep through the sand and into these waterways and destroy our fishing grounds...our food!! Remember, Anahola was a fishing village before and the tradition still runs deep here.

I believe the community would welcome this alternate location more than the Burial Sand Dunes where they are now. Let our kupuna rest and be revered!! Instead, make this into a MEMORIAL PARK with picnic benches and maybe an open Hawaiian style pavilion for small scheduled gatherings and meetings. Provide regularly serviced porta potties and trash pickup by the State and make this a requirement. We have 1 million dollars coming to this community, some of it could help fund this endeavor. This can be a nice way to generate funds for maintenance, security and other improvements as well for our community. Our existing community Anahola Clubhouse is over used and over booked as it is, we will be needing another Community gathering venue in the very near future.

#32

This is my Mana'o, Amama, Ua Noa, Lele Wale,
Aunty Aggie Keaolani Marti-Kini
Author of the Anahola Book
Po'o KA Farmer's HUI
Po'o AHA MOKU KO'OLAU/AMAC/DLNR

#33

Freitas Jr, Robert C

From: DHHL.Planning
Sent: Monday, April 11, 2016 9:56 AM
To: Freitas Jr, Robert C
Cc: Manuel, Kaleo L
Subject: FW: Re-purposing the DHHL Kumu Kamp in Anahola for direct Hawaiian use

From: Felicia Alongi Cowden [mailto:akamaimom@gmail.com]
Sent: Sunday, April 10, 2016 12:56 PM
To: Burrows-Nuuanu, Leatrice W <leatrice.w.burrows-nuuanu@hawaii.gov>; DHHL.Planning <dhhl.planning@hawaii.gov>
Cc: William Aila <william.j.aila@hawaii.gov>
Subject: Re-purposing the DHHL Kumu Kamp in Anahola for direct Hawaiian use

Aloha DHHL,

As a 35-year resident of Kauai's North Shore, my preference is for the land currently known as Kumu Kamp to be redirected for open Hawaiian use of the Anahola/Ko'olau moku. It is a lovely area that should be available to the Hawaiian people who live in the area and their friends.

Given the persistent struggles and displacement of kanaka maoli, they should be allowed to camp on the beachside DHHL lands of Anahola. Our entire society endures the shameless marginalization of our host culture. We are all part of the challenge. That said, Hawaiian Home Lands is designated to be given to Hawaiians for their homes, not leased to a power company nor utilized as a vacation rental for visiting organizations. To limit our indigenous people to compete for housing at market value demands they relinquish their sincere ties to living within their culture. A \$500,000+ home cannot be purchased in a manner that allows the freedom to have a serious focus on traditional ways of life.

The DHHL is derelict in having prime Anahola fishing areas at the river mouth typically rented to visiting organizations from somewhere other than this island. We have had long-term Hawaiian campers forced from camping at the Anahola beach, even the tragic burning of a person in a house during forced evacuation.

It is with reluctance that I comment, because I am not kanaka and live in Kilauea. My role as a community advocate and as a community affairs program on KKCR, had me receiving a number of calls the night before and the morning of the 4/9 meeting asking me to come and witness the DHHL meeting with Anahola Hawaiian Homes Association. Hawaiian people were reluctant to speak out against the continuance of the lease with Kumu Kamp out of fear of retribution to themselves or their families.

There is a palpable layer of tension in Anahola over this preferential treatment that certain notable Hawaiian groups have over the others. Those who are compliant with the government are able to receive abundant opportunity and thus to leverage and intimidate the groups who continue holding their sovereign status.

We all watch it. It feels awful. Hawaiian people deserve the right to land for their homes particularly if they live the culture and have any genealogy connection, regardless of the strength of their bloodline. For DHHL to lease out prime land, as a business, to generate a pittance toward the state's obligation for Hawaiian Homes is counter to layers of political commitment. Hawaiian lands are used for airports, military bases, power generation, landfills, etc. Those monies need to pay for the infrastructure and follow-through on the land that is identified as

DHHL. The states commitment to allocating Hawaiian home lands should be treated as an obligation, but is instead managed like an underserved charity.

The beachfront of Ahahola should be for the direct use and benefit of the people, not exploited to the visitors for a small income to a controversial 501(c)3.

Felicia Cowden
Kilauea, Kauai

#33

Freitas Jr, Robert C

From: Tracey Schavone <traceyschavone@gmail.com>
Sent: Monday, April 11, 2016 10:29 AM
To: DHHL.Planning
Cc: Nuuanu@hawaii.gov; Burrows-Nuuanu, Leatrice W
Subject: Fwd: opposition to lease for Kumu Camp

#34

> My husband & I have owned our home in Anahola for twelve years and we ask that DHHL refrain from granting a 25 year lease to the Robin Danner Developers. Anahola Bay is a very special area and it is a sanctuary for those of us who live here. If the Kumu Camp acquires a 25 year lease and turns the area into a commercial operation it will be detrimental to the peace and family atmosphere of the Bay. Kauai has been my home since 1980. I am curious as to how they were able to build rental huts as Anahola is not a TVR destination. And what are they doing with the sewage? I request that you refuse to grant the 25 year lease.

>
> Mahalo,
> Tracey Schavone
> PO Box 676
> Anahola, HI 96703
> 808-822-4465

Freitas Jr, Robert C

From: Jane Stern <janepstern@gmail.com>
Sent: Monday, April 11, 2016 11:44 AM
To: Burrows-Nuuanu, Leatrice W
Subject: Please do not give expanded lease to Kumu Camp!

#35

Aloha Ms. Burrows-Nuuanu,

I am writing regarding the proposed expanded lease to Kumu Camp in Anahola. I strongly oppose the proposed expansion of Kumu Camp to develop commercial tourist properties at Anahola Beach.

Our family has been coming to Anahola since 1995. My husband and I fell in love with this quiet beach, its orientation to locals and families and loved it so much that we purchased a home here in Anahola about 10 years ago. This little spot of paradise must be protected!

My particular concerns are:

- ocean ecology being disrupted by seeping septic tanks
- water pollution as a result of gasoline powered jetskis and boats
- increased traffic and congestion

This area has been loved and used by Native Hawaiians for years as a place for family gatherings, fishing, surfing and swimming. Little kids (including our grandchildren and so many others!) learn to swim and appreciate the ocean in our Keiki Beach.

The proposed expanded use for Kumu Camp will not benefit locals. We have watched the development of Kumu Camp and are not at all impressed with how it looks or how it is being run.

The children of Anahola and beyond thank you in advance for rejecting the expanded lease proposal and keeping the beach clean, safe, and focused on families.

Mahalo for your consideration,
Jane Stern

Freitas Jr, Robert C

From: Albert Morgan <albertmorgan1@me.com>
Sent: Monday, April 11, 2016 1:11 PM
To: Burrows-Nuuanu, Leatrice W
Subject: Kumu Camp Development

#36

Aloha Leatrice Burrows,

I oppose this project. The country/rural atmosphere and health of Anahola must not be changed in the pursuit of profits from development.

Mahalo,
Al Morgan
4619 Haleilio Road
Kapa, HI 96746
Phone 808-478-4395

Freitas Jr, Robert C

#37

From: DHHL.Planning
Sent: Monday, April 11, 2016 9:57 AM
To: Freitas Jr, Robert C
Cc: Manuel, Kaleo L
Subject: FW: TESTIMONY: NO to 25 year Kumu Camp lease to Robin Danner Developers

From: Agnes Marti-Kini [mailto:keao@me.com]
Sent: Monday, April 11, 2016 8:23 AM
To: DHHL.Planning <dhhl.planning@hawaii.gov>
Subject: Fwd: TESTIMONY: NO to 25 year Kumu Camp lease to Robin Danner Developers

FYI

Begin forwarded message:

From: Sylvia Partridge <sylpartridge@yahoo.com>
Date: April 10, 2016 5:06:00 PM HST
To: "Leatrice.W.Burrows-Nuuanu@hawaii.gov" <Leatrice.W.Burrows-Nuuanu@hawaii.gov>
Subject: TESTIMONY: NO to 25 year Kumu Camp lease to Robin Danner Developers
Reply-To: Sylvia Partridge <sylpartridge@yahoo.com>

To: The DHHL

From: Sylvia Partridge, resident of Princeville, Kauai (3800 Kamehameha Rd, # 22, Princeville, HI 96722), friend of many Anahola residents -- I spend and have spent quite a bit of time at Anahola Beach and Kumu Camp swimming, walking on the beach, playing music, watching hula and socializing with Anahola residents.

Re: Testimony re possible 25 year Kumu Camp lease
to
Robin Danner Developers

#37

Testimony: A STRONG NO to the
commercialization of Kumu
Camp by granting a 25 year lease to Robin Danner
Developers.

I have spent many happy hours at Anahola
Beach and at
Kumu Camp with my friends from Anahola. We love
to swim,
socialize, play music and watch hula on the beach
areas and
at Kumu Camp.

To commercialize the area by introduce jet skiing,
parasailing and
boat tours on the bay and river, as a first step to
further
commercialization, would be to change the
pleasantly relaxed
and rural nature of the present beach and river
areas. It would inevitably
lead to more people and especially tourists and the
problems of traffic
and crowding that are guaranteed to happen with
this type of
commercialization. Ke'e Beach on Kauai is an
example of a nightmare
place for Kauai residents because of overcrowding,
more and

more traffic, more and more tourists, the inevitable environmental degradation and trash problems, the inevitable noise and overcrowding problems that come with commercialization such as Robin Danner Developers are proposing. Please do not let this nightmare scenario happen in Anahola because of the increasing commercialization that Robin Danner Developers are proposing.

#37

AN ABSOLUTE 100% NO TO WAIKIKI ON KAUAI. Waikiki is a situation that happened one step at a time, one decision at a time by various planning and government officials. Please let's not take even the first step in Anahola toward the severe overcrowding and environmental degradation represented by Waikiki.

Thank you very much for consideration of these remarks.

Sylvia Partridge

Freitas Jr, Robert C

From: DHHL.Planning
Sent: Monday, April 11, 2016 9:57 AM
To: Freitas Jr, Robert C
Cc: Manuel, Kaleo L
Subject: FW: Re Kumu Camp in Anahola.

#38

From: Agnes Marti-Kini [mailto:keao@me.com]
Sent: Monday, April 11, 2016 8:24 AM
To: DHHL.Planning <dhhl.planning@hawaii.gov>
Subject: Fwd: Re Kumu Camp in Anahola.

FYI

Begin forwarded message:

From: Noreen Dougherty <montessorihale@gmail.com>
Date: April 10, 2016 5:21:47 PM HST
To: Aunty Aggie <keao@me.com>
Subject: Fwd: Re Kumu Camp in Anahola.

----- Forwarded message -----

From: Noreen Dougherty <montessorihale@gmail.com>
Date: Sun, Apr 10, 2016 at 5:21 PM
Subject: Re Kumu Camp in Anahola.
To: Leatrice.W.Burrows-Nuuanu@hawaii.gov

Please stop Kumu Camp from getting any lease at all and hold the people who are responsible for dishonoring Hawaiian burial grounds responsible for their actions., The intention for the use of the property absolutely goes against honoring the fact that the Anahola Beach, open to the general public, is primarily, in my opinion, for the residents of Anahola to enjoy.

If these grounds are mapped by the Archeological Society as "Burial Dunes", I want to know how the acquisition of this property came about to begin with. Who oversees projects and who is to be held accountable?

The pollution from the seeping septic tanks will certainly impact the ecological balance of the ocean. I am absolutely appalled that Kumu Camp was not transparent, monitored , or even allowed to occur to begin with. The people in charge have some explaining to do and probably some revision and clarification of what is permissible.

When I drive from Kapaa to Anahola to sit on the beach and enjoy a peaceful moment, I want to see our Keiki on the beach with their family being taught their cultural practices of their ancestors who had the utmost respect for for all of nature; NOT JET SKIIS upsetting the peace and beauty. We have an island that is one of the most beautiful in the world and we are not protecting it. Many of our residents are working to bring issues to the forefront to be addressed. Obviously we are not being heard. The governments are not listening to the

people. The greed for money and development must never win out over respect for indigenous people

STOP this atrocity and restore peace, harmony, ecological health, and trust. I stand strong with the Hawaiian people!

Noreen Dougherty

April 10, 2016

#38

Freitas Jr, Robert C

From: Burrows-Nuuanu, Leatrice W
Sent: Wednesday, April 13, 2016 10:08 AM
To: Freitas Jr, Robert C
Subject: FW: Kumu Kamp, Anahola, Hawaii

#39

28

From: Sue Strickland (mailto:sue@kauaiproperties.com)
Sent: Wednesday, April 13, 2016 10:03 AM
To: Burrows-Nuuanu, Leatrice W <leatrice.w.burrows-nuuanu@hawaii.gov>
Cc: Auntie Aggie <keao@me.com>
Subject: Kumu Kamp, Anahola, Hawaii

To the Department of Hawaiian Homes Land and Leatrice W. Burrows-Nuuanu,

My husband and I of the Anahola area and live on 4729 Aliomanu Road. We have owned this property since 1986. We love the "country feeling of the Anahola/Aliomanu beach area. We are against a 25 year extension for current lease holder Robin Danner and her commercial request for para sailing, jet ski, parasailing, paddle boarding and surf lessons and boat tours on the bay and river tours up the Anahola River. We feel the current use of Kumu Kamp is not compatible with the peaceful, tight knit community of Anahola. Kumu Kamp should not be run as a "vacation rental" destination as it is not located in a Visitor Destination Area nor does it have a Non Conforming Vacation Rental permit as issued by the County of Kaua'i. Kumu Kamp should be for the people of the community.

Sincerely,

Sue Maruyama-Strickland, RB

Garden Island Properties LLC
4-928 Kuhio Hwy. Kapaa, HI 96746
P. 808.822.4871, F. 808.822.7984
aloha@kauaiproperties.com
www.KauaiProperties.com



Follow us on social media!

Instagram: <https://www.instagram.com/gardenislandproperties/>

Facebook: <https://www.facebook.com/KauaiProperties>

#41

**DHHL Beneficiary
TESTIMONY ON KUMU CAMP**

April 11, 2016

Dear Commissioners and DHHL Administrators,

As a beneficiary of Hawaiian Homelands, applicant since 1979 and a community leader, as Co-Founder of Kukulu Kumuhana O Anahola (KKOA) and , share the kuleana of Konohiki in the ahupua'a of Moloa'a which is part of the Aha Moku O Ko'olau (Anahola to Kilauea), I feel it is my obligation to speak, not so much for myself, but for the keiki, youth and future generations.

As an individual, I have witnessed the subtle, but damaging effects of allowing chemicals and effluent close to our streams and shorelines. Our fresh water, sea life, coral reefs and kanaka pay heavily for our human conveniences and ignorance. The other sad subtleties are accessing our beaches. Once the fence goes up, the gate usually follows, then a NO TRESSPASSING sign.

In Moloa'a, a smaller secluded bay, I have seen our Honu (turtles) bearing tumors on their heads and body, poop floating and browned foamy water and dead reefs. This is an outrage! Because this is our home, this is where we live, fish, swim, enjoy our family. To see these sickening sights are disheartening. There are more vacation rentals, than full-time residents who live here. And @ present 2 Hawaiian families.

I hope Anahola will be a place where Native Hawaiian traditions and cultural identity will emerge and not be subverted by the subtleness of change.
It is time, as Kanaka to stand Tall, To stand Together to **preserve** the integrity of what we have. If we can picture the quality of life our keiki, youth and future will beholden, because of our decisions today, maybe this could help us to think long term for their self identity as Kanaka to be strengthened.

What-is needed is more accessibility to clean parks, pavilions, with parking areas, where our Native Hawaiian community can access and enjoy the beach with family, without feeling like they are the guest of their own lands and beaches .

Mahalo nui loa

Ke Akua pu
Kuuleialoha Punua

Disclaimer: As Co-Founder and President of KKOAA and as a Director, my position is for the betterment of our community, upholding the most beneficial and useful contributions from our NH people. KKOAA works diligently to fulfill our mission , which is: To assist our children in developing life skills that will strengthen their identity through Hawaiian values. ·Build self-esteem and enable individuals in a way to successfully manage their future.

KKOAA presses wholeheartedly to stay focused on KKOAA's Vision: A Thriving Hawaiian Community
· Encouraging the arts, both cultural and modern · Utilizing new technologies to enhance the old
· Establishing and managing a healthy and sustainable way of living.

Freitas Jr, Robert C

From: DHHL.Planning
Sent: Monday, April 25, 2016 10:36 AM
To: Freitas Jr, Robert C
Cc: Manuel, Kaleo L
Subject: FW: Kumu Camp project

42

From: Sandi Cummings [mailto:scummings@aloha.net]
Sent: Saturday, April 23, 2016 1:55 PM
To: DHHL.Planning <dhdl.planning@hawaii.gov>
Subject: Kumu Camp project

I am a non-beneficiary married to a beneficiary (Frank Cummings) living on Hawaiian Home Lands property. We live down the street on Anahola Road from Kumu Camp. Before Kumu Camp was physically started, the whole area was overrun with druggies and their paraphernalia and trash as well as the area being a dumping area for any and all kinds of trash, including old cars. I have heard first hand from many recovering drug addicts the kinds of activities that took place at that particular spot. Now that Kumu Camp is operating, the druggies had to relocate. The area is clean, safe and well maintained. HCDC and AHHA were instrumental in cleaning and disposing of all the trash that had been left on the property. Trash has been replaced with local Hawaiian plants as well as the Kumu Camp sites. It's so awesome to hear the sound of school children enjoying learning on the site. My husband and I have provided meals for school functions, and cultural activities that took place at Kumu Camp. I only see a benefit to the community from the Kumu Camp.

Thank you for your time at the consultation. Please include my opinion in favor of Kumu Camp. I, along with my husband Frank, have provided many volunteer hours at Kumu Camp because we sincerely believe in it's mission.

Aloha,
Sandra Cummings
Non-beneficiary
4397 Anahola Road
Anahola, HI 96703

Freitas Jr, Robert C

From: DHHL.Planning
Sent: Monday, April 25, 2016 10:36 AM
To: Freitas Jr, Robert C
Cc: Manuel, Kaleo L
Subject: FW: Kumu Camp project

43

From: Frank Cummings [mailto:gcummingsjr@hawaii.rr.com]
Sent: Saturday, April 23, 2016 2:00 PM
To: DHHL.Planning <dhhl.planning@hawaii.gov>
Subject: Kumu Camp project

I am a beneficiary living on Hawaiian Home Lands property. My wife (a non-beneficiary) and I live down the street on Anahola Road from Kumu Camp. Before Kumu Camp was physically started, the whole area was overrun with druggies and their paraphernalia and trash as well as the area being a dumping area for any and all kinds of trash, including old cars. I have heard first hand from many recovering drug addicts the kinds of activities that took place at that particular spot. Now that Kumu Camp is operating, the druggies had to relocate. The area is clean, safe and well maintained. HCDC and AHHA were instrumental in cleaning and disposing of all the trash that had been left on the property. I provided many volunteer hours along with my construction equipment to clean up the property. Trash has been replaced with local Hawaiian plants as well as the Kumu Camp sites. It's so awesome to hear the sound of school children enjoying learning on the site. My wife and I have provided meals for school functions, and cultural activities that took place at Kumu Camp. I only see a benefit to the community from the Kumu Camp.

Thank you for your time at the consultation. Please include my opinion in favor of Kumu Camp. I, along with my wife Sandra, have provided many volunteer hours at Kumu Camp because we sincerely believe in it's mission.

Aloha,
Gary Frank Cummings, Jr.
4397 Anahola Road
Anahola HI 96703

Freitas Jr, Robert C

From: DHHL.Planning
Sent: Wednesday, April 27, 2016 10:57 AM
To: Freitas Jr, Robert C
Subject: FW: No to anahola kudu camp expansion

#44

For the Record.

M. Kaleo Manuel
Acting Planning Program Manager
Planning Office
P: (808) 620-9485
F: (808) 620-9559

Department of Hawaiian Home Lands
Mailing: P.O. Box 1879, Honolulu, HI 96805
Address: 91-5420 Kapolei Parkway, Kapolei, HI 96707

NOTICE: This information and attachments are intended only for the use of the individual or entity to which it is addressed, and may contain information that is privileged and/or confidential. If the reader of this message is not the intended recipient, any dissemination, distribution or copying of this communication is strictly prohibited and may be punishable under state and federal law. If you have received this communication and/or attachments in error, please notify the sender via email immediately and destroy all electronic and paper copies of the original message.

-----Original Message-----

From: Jillian Auberger [mailto:jillian@auburger.com]
Sent: Wednesday, April 27, 2016 9:13 AM
To: DHHL.Planning <dhhl.planning@hawaii.gov>
Subject: No to anahola kudu camp expansion

Dear DHHL,

I am expressing deep concern about commercializing the Kumu Camp area. As a 2 year home owner in Kilauea we enjoy the FAMILY anahola beach "country" style very much. It is one of the undiscovered beauties in our back yard of old Kauai feel. It is also disturbing to note that such expansion would affect Hawaiian burial grounds (enough places have been destroyed over the years by a greedy few). This sacred aina must be preserved for the community and families that dwell in the area. Please do not allow this 25 year lease and construction/expansion to occur.

Mahalo,
Jillian Auberger

ITEM NO. G-1

Freitas Jr, Robert C

From: susan barozzi <windinherwings@yahoo.com>
Sent: Wednesday, April 27, 2016 10:53 AM
To: Burrows-Nuuanu, Leatrice W
Subject: Kumu Camp

#45

Aloha,

As a member of the community I do not want to see Kumu Camp expanded.

Anahola Beach is a sacred area to the Hawaiians and all of us who respect the aina. Kalalea Mountain is one of the most sacred places on the planet!

It is one of the few places on the islands that is not developed and where Hawaiians can go and feel like their land has not been invaded by the tourists and other outsiders. Furthermore, it is an important Hawaiian fishing area.

Another resort is not needed on Kauai!

Mahalo for listening to the voice of the people.

Susan Barozzi

Freitas Jr, Robert C

From: DHHL.Planning
Sent: Wednesday, April 27, 2016 10:58 AM
To: Freitas Jr, Robert C
Subject: FW: No more development in Anahola

#46

For the Record.

M. Kaleo Manuel
Acting Planning Program Manager
Planning Office
P: (808) 620-9485
F: (808) 620-9559

Department of Hawaiian Home Lands
Mailing: P.O. Box 1879, Honolulu, HI 96805
Address: 91-5420 Kapolei Parkway, Kapolei, HI 96707

NOTICE: This information and attachments are intended only for the use of the individual or entity to which it is addressed, and may contain information that is privileged and/or confidential. If the reader of this message is not the intended recipient, any dissemination, distribution or copying of this communication is strictly prohibited and may be punishable under state and federal law. If you have received this communication and/or attachments in error, please notify the sender via email immediately and destroy all electronic and paper copies of the original message.

-----Original Message-----

From: Myrica Morningstar [mailto:myricabliss@gmail.com]
Sent: Wednesday, April 27, 2016 8:32 AM
To: DHHL.Planning <dhhl.planning@hawaii.gov>
Subject: No more development in Anahola

I think "Kumu camp" as it is, is ok. But no more development please! Small, rustic and available to all is fitting for Anahola. Anahola is sacred land. We must approach it with respect.

Mahalo for listening,
Myrica

Freitas Jr, Robert C

From: DHHL.Planning
Sent: Wednesday, April 27, 2016 10:58 AM
To: Freitas Jr, Robert C
Subject: FW: Kumu Camp

#47

For the Record.

M. Kaleo Manuel
Acting Planning Program Manager
Planning Office
P: (808) 620-9485
F: (808) 620-9559

Department of Hawaiian Home Lands
Mailing: P.O. Box 1879, Honolulu, HI 96805
Address: 91-5420 Kapolei Parkway, Kapolei, HI 96707

NOTICE: This information and attachments are intended only for the use of the individual or entity to which it is addressed, and may contain information that is privileged and/or confidential. If the reader of this message is not the intended recipient, any dissemination, distribution or copying of this communication is strictly prohibited and may be punishable under state and federal law. If you have received this communication and/or attachments in error, please notify the sender via email immediately and destroy all electronic and paper copies of the original message.

-----Original Message-----

From: Andrea Slaski [mailto:andrea@kauaicouplesmassage.com]
Sent: Wednesday, April 27, 2016 4:49 AM
To: DHHL.Planning <dhhl.planning@hawaii.gov>; Burrows-Nuuanu, Leatrice W <leatrice.w.burrows-nuuanu@hawaii.gov>
Subject: Kumu Camp

Aloha!

We just wanted to say how much we love and support Kumu camp. We use one of the bungalows to practice our Lomi Lomi massage. It provides us with a quiet tranquil environment to offer our massages to the community and visitors. We love this area because it is not commercialized and shares the tone and feel of the Hawaiian culture for our Lomi Lomi. That is what is special and sacred about this space. Before Kumu camp it was a very dangerous area infested with drug users. We are very happy this area has been cleaned up and is now a safe haven. We know the future if Kumu camp will retain this laid back tone and feel and think it is a wonderful part of our sacred Anahola beach.

With warmest Aloha,

✿ Andrea Lynn Slaski, L.M.T. ✿
andrea@kauaicouplesmassage.com
808-651-9080

> On Apr 27, 2016, at 10:19 AM, Dave and Andrea <dnakauai@yahoo.com> wrote:

#43

>

>

> Aloha,

> We feel that Kumu camp is a positive place for our community. It allows a clean safe environment for our children and families to enjoy beautiful Anahola beach. Saying that it is going to turn into a mini Waikiki is really "far fetched" and fear-based. Before Kumu camp, this area was drug infested and a place for homeless people to hide. It was scary and a dangerous area. With Kumu camp there now it is a quiet, peaceful, clean and safe place for our residents and visiting families to enjoy. We feel that Kumu camp has and will retain the Hawaiian culture by having a place to teach our children hula, lau hala weaving, tahitian drumming, gardening, fishing, etc. it is a positive outlet for our island. Anahola is known for it's drug use and homeless people, illegal camping along this beach. Kumu camp has shifted this. We feel that a 25 year lease is reasonable and the lease can state what the regulations are for this area. We feel it will remain a peaceful, quiet, safe area for our community. If Kumu camp was not here.... It would progress to be a drug infested dangerous place instead of a clean, safe environment for people to enjoy.

>

>

> Aloha,

>

> 1 Dave and Andrea Slaski 1

> Long-time Kauai residents

Freitas Jr, Robert C

From: DHHL.Planning
Sent: Wednesday, April 27, 2016 10:59 AM
To: Freitas Jr, Robert C
Subject: FW: Kumu Camp

48

For the Record.

M. Kaleo Manuel
Acting Planning Program Manager
Planning Office
P: (808) 620-9485
F: (808) 620-9559

Department of Hawaiian Home Lands
Mailing: P.O. Box 1879, Honolulu, HI 96805
Address: 91-5420 Kapolei Parkway, Kapolei, HI 96707

NOTICE: This information and attachments are intended only for the use of the individual or entity to which it is addressed, and may contain information that is privileged and/or confidential. If the reader of this message is not the intended recipient, any dissemination, distribution or copying of this communication is strictly prohibited and may be punishable under state and federal law. If you have received this communication and/or attachments in error, please notify the sender via email immediately and destroy all electronic and paper copies of the original message.

-----Original Message-----

From: Dave and Andrea [mailto:dnakauai@yahoo.com]
Sent: Wednesday, April 27, 2016 4:19 AM
To: DHHL.Planning <dhhl.planning@hawaii.gov>; Burrows-Nuuanu, Leatrice W <leatrice.w.burrows-nuuanu@hawaii.gov>
Subject: Kumu Camp

Aloha,

We feel that Kumu camp is a positive place for our community. It allows a clean safe environment for our children and families to enjoy beautiful Anahola beach. Saying that it is going to turn into a mini Waikiki is really "far fetched" and fear-based. Before Kumu camp, this area was drug infested and a place for homeless people to hide. It was scary and a dangerous area. With Kumu camp there now it is a quiet, peaceful, clean and safe place for our residents and visiting families to enjoy. We feel that Kumu camp has and will retain the Hawaiian culture by having a place to teach our children hula, lau hala weaving, tahitian drumming, gardening, fishing, etc. It is a positive outlet for our island. Anahola is known for it's drug use and homeless people, illegal camping along this beach. Kumu camp has shifted this. We feel that a 25 year lease is reasonable and the lease can state what the regulations are for this area. We feel it will remain a peaceful, quiet, safe area for our community. If Kumu camp was not here.... It would progress to be a drug infested dangerous place instead of a clean, safe environment for people to enjoy.

Aloha,

ITEM NO
G-1

Freitas Jr, Robert C

From: DHHL.Planning
Sent: Wednesday, April 27, 2016 10:59 AM
To: Freitas Jr, Robert C
Subject: FW: A better plan than Kumu Camp

#49

For the Record.

M. Kaleo Manuel
Acting Planning Program Manager
Planning Office
P: (808) 620-9485
F: (808) 620-9559

Department of Hawaiian Home Lands
Mailing: P.O. Box 1879, Honolulu, HI 96805
Address: 91-5420 Kapolei Parkway, Kapolei, HI 96707

NOTICE: This information and attachments are intended only for the use of the individual or entity to which it is addressed, and may contain information that is privileged and/or confidential. If the reader of this message is not the intended recipient, any dissemination, distribution or copying of this communication is strictly prohibited and may be punishable under state and federal law. If you have received this communication and/or attachments in error, please notify the sender via email immediately and destroy all electronic and paper copies of the original message.

-----Original Message-----

From: Trudy [mailto:trudy@insearchforthebest.nl]
Sent: Wednesday, April 27, 2016 12:09 AM
To: DHHL.Planning <dhdl.planning@hawaii.gov>
Subject: A better plan than Kumu Camp

Aloha Friends,

I just wrote Leatrice.

What about creating a plan what's makes a difference so that the plans to destroy the Power of Anahola bay will absolute?

Let's rock & Roll,

Trudy van Oostrum

00 31 6 814 96 822

skype: Trudyvao

ITEM NO. G-1

Freitas Jr, Robert C

From: Mira Walker <mirasharan@pacific.net>
Sent: Wednesday, April 27, 2016 1:30 PM
To: Burrows-Nuuanu, Leatrice W
Subject: Anahola Kumu development

#50

Aloha, I am a long time resident and am expressing my feelings related to further development of Kumu camp I work in the tourist industry and here over and over again the folks come here because it is not overdeveloped . Bringing further development and pollution to anahola would be of no advantage to the neighboring community or the island in general. It would disturb the ancestral ground and disrespectful to all except the few who get financial gain Mahalo. Mira walker

Sent from my iPhone

Freitas Jr, Robert C

From: pamela nelson <pamelan16@gmail.com>
Sent: Wednesday, April 27, 2016 2:18 PM
To: Burrows-Nuuanu, Leatrice W
Subject: commercializing Anahola Bay?????

#51

Dear Leatrice, Please do not commercialize Anahola Bay Beach front, with illegal yurts and recreational use for a company that would providing parasailing, boat tours ,etc.

Our oceans here and so many areas on it and around it really need strong positive attention to preserve the waters, the wild life in and around it, and the people who swimming it,etc.

Thank you for your positive and strong consideration.

Pamela Nelson

Freitas Jr, Robert C

From: Karen Kenny <k2yogafitness@gmail.com>
Sent: Wednesday, April 27, 2016 2:19 PM
To: Burrows-Nuuanu, Leatrice W
Subject: Kudu Camp development

52

Please respect the concerns of locals and Kaua'i residents. Please disallow this project and anything that threatens the peace and beauty of this lovely rural community.

Thank you,
Karen Kenny
6780J Ko'olau Road
Anahola HI

Be kind whenever possible. It is always possible. -The Dalai Lama

Freitas Jr, Robert C

From: Burrows-Nuuanu, Leatrice W
Sent: Thursday, April 28, 2016 11:07 AM
To: Freitas Jr, Robert C
Subject: FW: Please reconsider the KUMU Camp

#53

From: Amanda [mailto:gdolphinproj@yahoo.com]
Sent: Thursday, April 28, 2016 10:07 AM
To: Burrows-Nuuanu, Leatrice W <leatrice.w.burrows-nuuanu@hawaii.gov>
Subject: Please reconsider the KUMU Camp

Dear Leatrice,

I am a former resident of Kaua'i and have a vested interest and love of for its land, people, and culture. I have been advised by friends who still live on the island of the rapid development that has taken place there over the last few years.

I currently live in Nashville, TN and am seeing a similar overly-rapid development pace happening here, due to the fact that we have been named the new "IT" city for a couple of years now. Everything myself and others loved about this place, and all of the things that had made it into an "IT" city are being removed. The glorious green hills are being bulldozed in favor of corporate chain stores and restaurants, small local businesses are closing their doors at record speed because they can no longer afford the rents. People are more stressed and more displaced, and there is more traffic, and less peace.

The development has taken place much too quickly, with not enough concern for what things will look like even a few years down the road, or what effect it is having on native and current residents. In life, love, and business, it is always best to take care of ourselves before extending a hand to others, or none of us really come out ahead. In this case, the residents of Anahola and Kaua'i must be considered before the needs and desires of tourists and development companies. Tourists and developers come for a bit and go home. Kauaians are the caretakers of the land, and will always be with it, no matter what state others may leave it in, so they must be considered first.

When I lived there back in 2009, there was a conflict similar in ways to the current conflict in Anahola, over a proposed section of the bike path that would desecrate ancient burial grounds near the mouth of the Wailua River. A re-work of the plan would have made everyone happy, and not continued to inflict wrongs on the Native people who have been ignored for far too long.

Please do not stop the conversation until everyone can leave the table happy.

Aloha and Mahalo,

Amanda Dobra Hope
Nashville, TN
(Former Kaua'i resident)

ITEM NO. G-1

Freitas Jr, Robert C

From: DHHL.Planning
Sent: Thursday, April 28, 2016 4:47 PM
To: Freitas Jr, Robert C
Cc: Manuel, Kaleo L
Subject: FW: Anahola Beach

#54

From: Sue [mailto:susan.cowsmeadow@gmail.com]
Sent: Thursday, April 28, 2016 6:14 AM
To: DHHL.Planning <dhdl.planning@hawaii.gov>
Subject: Anahola Beach

Please do not renew the 25 year lease for Kumu Camp at Anahola Beach. There are Hawaiian burial grounds there that should not be desecrated. In addition, this is a beautiful beach for community members to enjoy for picnics and fishing. Developing it for commercial use will change this, as will the pollution from inadequate sewage treatment.

Respectfully,

Susan Coan
4108 Aheha Pl
Lihue HI 96766

Freitas Jr, Robert C

From: Burrows-Nuuanu, Leatrice W
Sent: Friday, April 29, 2016 9:05 AM
To: Freitas Jr, Robert C
Subject: FW: anahola

#35

-----Original Message-----

From: claudia trask [mailto:claudiatrask@gmail.com]
Sent: Thursday, April 28, 2016 8:48 PM
To: Burrows-Nuuanu, Leatrice W <leatrice.w.burrows-nuuanu@hawaii.gov>
Subject: anahola

aloha,
i pray that what is in your heart is knowing that you can and must protect our precious anahola. we are trusting that you will do what is pono. please and thank you sincerely, claudia trask resident of anahola for twenty years.

Freitas Jr, Robert C

From: Burrows-Nuuanu, Leatrice W
Sent: Friday, April 29, 2016 3:13 PM
To: Freitas Jr, Robert C
Subject: FW: KUMU camp development

#56

From: kelsey brusnyk [mailto:kbrusnyk@gmail.com]
Sent: Friday, April 29, 2016 3:11 PM
To: Burrows-Nuuanu, Leatrice W <leatrice.w.burrows-nuuanu@hawaii.gov>
Subject: KUMU camp development

Aloha Leatrice,

I am writing as a concerned non-Hawaiian resident about the development of KUMU camp - I think this is a terrible thought. Please respect the Hawaiian burials as well as the gentle, sweet and soothing place that is Anahola beach. It is a quiet neighborhood beach and a beautiful place for residents and tourists alike to reconnect with Nature and true spirit. Commercializing the bay would take away this beautiful space to find harmony with the earth, ourselves and one another. In addition, KUMU camp needs to be held accountable to their seeping sewage system. I am astonished that is allowed to happen. The creatures of the sea deserve more respect than - please seriously reconsider the request to commercial the bay - allow Kauai to remain beautiful. Tourists are not at a lack for things like parasailing, paddle boarding, etc - leave them a quiet, serene space where they, and we, can simply be.

Thank you for your service and consideration. Mahalo.

--

Aloha and love,

Kelsey

Kelsey Brusnyk
Ayurveda. Yoga.
808-635-7118

Freitas Jr, Robert C

From: Burrows-Nuuanu, Leatrice W
Sent: Saturday, April 30, 2016 8:15 PM
To: Freitas Jr, Robert C
Subject: FW: Anahola's Pristine Bay...



From: Spirit Feathers Pattee [mailto:spiritfeathers13@msn.com]
Sent: Saturday, April 30, 2016 6:18 AM
To: Burrows-Nuuanu, Leatrice W <leatrice.w.burrows-nuuanu@hawaii.gov>
Subject: Anahola's Pristine Bay...

From: spiritfeathers13@msn.com
To: dhh1.planning@hawaii.gov
Subject: Anahola Bay...
Date: Wed, 27 Apr 2016 11:06:11 -0700

I understand the yurts located on the beach of Anahola Bay have never received permits or environmental impact studies so they can act as vacation rental units. This is surprising since currently the council is spending weeks getting testimony from tax-paying bed and breakfast units on the island trying to determine the permitting process.

Now I understand the group running the yurts wants to obtain a 25-year plan so they can provide jet skis, para-sailing, boats and on and on. Anahola will then become another Miami.

As a member of the Planning Committee I ask you to 'see' what happens to yet another part of our little, tiny rock in the middle of the ocean if these activities/products are allowed in that lovely little bay. It is a bay used for fishing, swimming and locals bringing their families to celebrate with one another and enjoy the quiet of the ocean and beach. Please do not allow the illegality to continue and please do not bring in all those loud, oil dripping machines to take over the bay.

And Please Always Remember we are an island that is 22x33 miles and EVERY decision the government makes is a BIG decision because it affects the entire island.... the way of life of the island.... the people who call this rock their home. Your vote affects so much and so many and in this case would have negative effects.

There is so much more I would ask of the Council and the Planning Dept (mostly I would request that members use courage and the word BAN and get busy banning all things that are destroying the island... a place that could actually be a Gem in the Pacific with the whole world looking at the government reps with envy, with pride, with honor for all the courage shown in bringing this island back to being liveable...) but right now the focus is on Anahola Bay. Please save the bay....

Māhalo and Aloha, Judy Pattee

Freitas Jr, Robert C

From: Burrows-Nuuanu, Leatrice W
Sent: Wednesday, April 13, 2016 1:50 PM
To: Freitas Jr, Robert C
Subject: FW: Anahola development...No

58

From: Rob Dorman [mailto:rob@celebritygetaways.com]
Sent: Monday, April 11, 2016 9:52 AM
To: Burrows-Nuuanu, Leatrice W <leatrice.w.burrows-nuuanu@hawaii.gov>
Subject: Anahola development...No

To Whom It May Concern:

In my opinion.... I feel that expanding the development of Anahola for recreational purposes is not in the best interest of that community.

Waste water going into the bay from the camp will not be good for the health of the bay or the people.

Please leave a little more country for the people who appreciate it on this.... getting way to crowded island.

Aloha,

Rob Dorman

A Kapaa-Kauai resident...

Freitas Jr, Robert C

From: DHHL.Planning
Sent: Monday, May 02, 2016 8:41 AM
To: Freitas Jr, Robert C
Subject: FW: ANAHOLA BAY

259

For the Record

M. Kaleo Manuel
Acting Planning Program Manager
Planning Office
P: (808) 620-9485
F: (808) 620-9559

Department of Hawaiian Home Lands
Mailing: P.O. Box 1879, Honolulu, HI 96805
Address: 91-5420 Kapolei Parkway, Kapolei, HI 96707

NOTICE: This information and attachments are intended only for the use of the individual or entity to which it is addressed, and may contain information that is privileged and/or confidential. If the reader of this message is not the intended recipient, any dissemination, distribution or copying of this communication is strictly prohibited and may be punishable under state and federal law. If you have received this communication and/or attachments in error, please notify the sender via email immediately and destroy all electronic and paper copies of the original message.

From: Vivian Hager [mailto:vhager@msn.com]
Sent: Saturday, April 30, 2016 12:59 PM
To: DHHL.Planning <dhdl.planning@hawaii.gov>
Subject: ANAHOLA BAY

Please GOD bring the divine light into the eyes and hearts of our island people. We cannot have each shoreline developed on our pristine island. It will never go back. KAUAI has so much to offer we don't need to add to the already OVER BUILDING !! WE DON'T NEED MANMADE ACTIVITIES. . . WE HAVE NATURE.

VIVIAN HAGER
KAPAA

Sent from my Verizon Wireless 4G LTE smartphone

ITEM NO. G-1

Freitas Jr, Robert C

From: DHHL.Planning
Sent: Monday, May 02, 2016 8:41 AM
To: Freitas Jr, Robert C
Subject: FW: No More Anahola Development

#60

For the Record

M. Kaleo Manuel
Acting Planning Program Manager
Planning Office
P: (808) 620-9485
F: (808) 620-9559

Department of Hawaiian Home Lands
Mailing: P.O. Box 1879, Honolulu, HI 96805
Address: 91-5420 Kapolei Parkway, Kapolei, HI 96707

NOTICE: This information and attachments are intended only for the use of the individual or entity to which it is addressed, and may contain information that is privileged and/or confidential. If the reader of this message is not the intended recipient, any dissemination, distribution or copying of this communication is strictly prohibited and may be punishable under state and federal law. If you have received this communication and/or attachments in error, please notify the sender via email immediately and destroy all electronic and paper copies of the original message.

-----Original Message-----

From: mira [mailto:mirasharan@pacific.net]
Sent: Saturday, April 30, 2016 11:50 AM
To: DHHL.Planning <dhhl.planning@hawaii.gov>
Subject: No More Anahola Development

The Ancestors

The Ancestors talk through the Rainbows
Surreal, not subtle, they touch the highway with their blessings, pain and prayers.

"Oh you who are embodied hear our chants.
Purify and free what is bound beneath monoliths of concrete.
Magnify our cries until all life resonance returns.
Lift up those who lie on the sidewalks and cutters drugged by insanity's hunger.²

Once more may the ocean spray heal and cleanse these mountains
Once more may the earth and sky sing in harmony
Once more may the Rainbows Reign "

By Mira

ITEM NO. G-1

Freitas Jr, Robert C

From: c be <mermaidmanifest@gmail.com>
Sent: Sunday, May 01, 2016 6:12 PM
To: Burrows-Nuuanu, Leatrice W
Subject: Say NO to KUMU CAMP!

#2 61

ALOHA,

I have lived in the anahola community for over 14 years & have already despaired over the negative changes brought by kumu camp.

Allowing further KUMU camp development of tourism would be beyond a detriment to our community.

It would be an absolute ATROCITY & ABOMINATION of a SACRED PLACE!

(& most of all proposed JET SKIS would just destroy the sanctity of this beautify sanctuary!

PLEASE help keep our anahola a peaceful place for people to enjoy the simple beautiful nature & essence if life that exists there since long before any of us!

PLEASE let us all live this Kuliana to truly malama this la'a aina & kai!

MAHAAAALO!

/C

Connie Burton

Pob 30916
Anahola
96703

ITEM NO. G-1

Freitas Jr, Robert C

From: Myra at Hale Pule <yogini@halepule.com>
Sent: Sunday, May 01, 2016 2:48 PM
To: Burrows-Nuuanu, Leatrice W; DHHL.Planning
Subject: Stop Kumu Camp Lease

#62

Hello,

I live in the area and come to the beach at Anahola bay regularly. One of the reasons I like it is because it is quiet and of a residential nature. Jet skis, for example, would be an absolute disaster for the joy of the people who use this beach for walking, swimming, surfing and the peace of Kauai.

I am sure there many other reasons that I could mention that you have already heard of. This would not be progress and it is hard to understand why it would even be considered. Keeping this area of a fairly natural nature is what will bring health and well being to the aina as well as all of the people here. Time to think about something besides money.

Thank you for your time.

Aloha, Myra Lewin
Myra Lewin
Founder and Director, Practitioner
Hale Pule Ayurveda and Yoga
yogini@halepule.com
415.484.8108

[Health Consultations](#) | [Ayurvedic Recipes](#) | [Self Healing Resources](#)

Find us on [Facebook](#)

Received 4/27/16



#63

P.O. Box 51 Anahola
Hawaii 96703

Ms. Jobi Magasatani, Chairperson
State Department of Hawaiian Homelands
P.O. Box 1789
Honolulu HI. 96805

Subject: Kumu Camp

General Term Land Use License Permit of: Kumu Camp Anahola HI.

Aloha Madam Chair:

In the aftermath of the April 9, 2016 Beneficiary Consultation I am writing this letter **in opposition** to any land use award (license, general, or conditional) be denied.

I refer my opposition directly to:

- Anahola Hawaiian Homesteaders Assoc. (AHHA)
- Hawaiian Community Development Corp. (HCDC) and founder,
- Ms. Robin Danner.

While the concept of utilizing the property and potential benefits (social, economic, cultural, education, etc.) to be gained from it are well intended there are issues with concerns left unresolved. Please allow me to provide a few:

- Community outreach including attendance records:
 - Village community
 - Hawaiian homesteaders
 - Non-Hawaiian residents directly impacted by the changes to the area.
 - Were any community leaders contacted and informed of meetings?
- Environmental Assessment (EA)
 - Why did HHC approve of the EA while issues remained outstanding?
 - Restroom (why construction allowed without approval)
 - Iwi kupuna grounds (was a detailed grid line dig performed)
 - Community review and comment period of the EA
 - Community input
- Traffic Impact Study
 - Was a traffic impact study completed
 - What improvement was completed



63

- **Community Benefit**
 - o What socio/economic level of community benefit does the applicant assure?
- **Because Of Non-Profit**
 - o Record/s of financial record, audit, qualification by the organization should be a requirement
 - o Made available to the public for review prior to decision-making.

Suggestive resolution:

In summary and while I recognize (along with many others) that should the DHHL decide against the request of the requestor meaning Robin Danner and her organization, that those who attended and participated in the consultation meeting felt strongly that the concept of Kumu camp is right but new leadership must be first addressed. With that said, only then will other respected leaders from the community will respond appropriately. Simply said? Robin Danner must be removed from controlling Kumu Camp before community renewal is allowed to move forward.

That the time for the DHHL to work outside the normal practice of doing business has come thanks (in part) to the actions taken by Robin Danner. As the Chair of the DHHL you hold the key to deliverance and I implore you act responsibly for the sake of Anahola.

This may require applied "out of the box" leadership actions however I'm confident you will do what is right and pono. Consider this matter as a "test" of political grandstanding and power grab between Robin Danner and the future of the DHHL.

Should the HHC decide against approving this license then assuredly there are other options to consider and are available if we are to collectively move forward preserving the integrity and cultural relevance to the area.

A few suggestions that may help are:

- Identify creditable community organization/s having IRS/State credentials to convene and start the foundational organizing process of building the "piko" system; and
- Prepare a date/time and place for a meeting.

Credibility is both key and critical when working to build this body and must remain cognizant of it. Avoiding or, minimizing personal conflicts even political grandstanding by the many organization is key to any successful outcome in my view. Only the DHHL and chair can address should you agree.



#63

On the pages following I have attached (marked exhibit) commentary reviews made by world travel seekers who arrived at Kumu camp describing their experience/s during that moment. The responses speaks volume to how important when organizations like AHHA/HCDC decides to leapfrog over the community with intentions of advancing their own personal agenda.

Removing Robin Danner of her control over Kumu camp (including the marketplace) will start the renewed process leading to a stronger/better community of leaders coming forward. This could very well be the opportune moment for the DHHL. Many believe this action could be the model for the future of DHHL moving forward.

As it stands today, we are a community divided caused by the disparage arrogance and actions of Robin Danner. Simply put? This lady is pilau.

Kumu camp provide this opportunity for renewed energy and change and I encourage you to act responsibly and pono way.

A few helpful suggestions to consider as you proceed with decision-making.

That:

- The DHHL reduce it's role from land steward trustees to that of equal partner to Anahola community;
- Empower community leaders to become decision makers
- Forming a council of community leaders and charging them to policing the community.
- Support socio-economic changes with action planning;
- Provide funding support to the council to manage itself properly;
- The DHHL will assign co-management partnering on remaining unencumbered lands between community leader/s and DHHL; and

Otherwise as Chair of DHHL what really are your options?

With any success the DHHL could witness a heightened renewed community attitude and trust values and a model could very well be conceived.

Pono management requires three basic words that became the foothold to guide the organization I belong offering stability continuity eliminating discussions that goes awry. They are;

"Transparency-Accountability & Credibility". Without it nobody gains.

I encourage you to consider these applicable words always.

**EXHIBIT A**

We arrived at check in time only to be greeted by manager who claimed the cleaning lady had not shown up that day to clean our unit so she said that she would In fact clean it herself. We left for about 2 hours to collect our supplies upon return we found made beds but when we turned the sheets back we found stains and hair on the sheets and pillow cases and upon further investigation mattress cover and mattress were absolutely filthy!! The entire tent a low was filthy as well as the shower and sink with a left over filthy sponge for washing. Outside eating table unwashed and dried decayed food on deck and eating

table. Flies everywhere! No lock on tent lows. We took note locals were using tent lows for the night and sneaking out in the morning? This place is poorly run and cared for. Would not recommend it for safety or your health!!!

- Stayed August 2015, traveled with family

We arrived at this place not expecting it to be anything fantastic and were prepared to rough it a little bit. However, when we arrived we found no gas for the hot water, out of order signs on the toilets and unlock able doors on the tent lows. 'Glamping' this was not. For these reasons we decided to leave and get accommodation Elsewhere. It was a little bit disappointing given the nice beach location. If the owners put some money into the place and built some proper cabins they would make a killing.

I had made reservations online for Kumu Camp and had received a confirmation email. I phoned the day of my arrival to verify the reservation and communicate a late check in, as our flight did not arrive until after 8 pm. We were assured that someone would be there to check that if and us in "no one was there she only lived a short distance and could meet us". When we arrived around 9 pm there was no one there to check us in and no one answered the phone. We were stranded on our first night in Kaua'i. My family and I had to scramble to make other accommodations for our stay last minute, under the gun. Kumu Camp not only didn't answer the phone that night, they never attempted to contact me at all to see if we made it somewhere else or to apologize. Poor customer service and unacceptable treatment of human beings. I would not recommend this location and warn other families of being stranded with nowhere to stay if they risk staying at Kumu Camp.

- Stayed July 2015, traveled with family

We chose Kumu Camp for our two-week vacation stay and went prepared for a "light" camping or rustic experience. We were excited about the location – both on the island and on the beach – and, frankly, the price (\$65 night for a tentalow) for a last minute accommodation.

There were many wonderful aspects of our experience at Kumu Camp: seriously, we were just feet from the beach, the sound of crashing waves 24/7; a great deck to call our own whether it was cocktail hour or coffee time; our own shower, flushing toilets; a comfortable bed; great access to town and restaurants as well as many hikes and beaches; and a quiet, low-key campground.



#63

There are also some things I think future visitors should know and be prepared for.

From the reviews, website, and email responses, we expected a kitchen that we could use, and grills. We made some assumptions based on this information, and brought our backpacking stove (mainly so we could make coffee at our tentalow and if we decided to backpack overnight), a couple of small backpacking pots and cups and a couple spoons and forks. We brought beach towels, but expected towels at camp based on the information provided.

The reality was that the "kitchen" is an old food truck that did not have lighting (so when you went inside, you needed to bring your headlamp or lantern); and was pretty unclean. There was a lot of old food in there and mice were getting into some hamburger buns that were there (the buns and the mice) our entire stay. Initially, there were only one or two old pots and there were utensils. About four days into our stay, a set of new pots and pans appeared because someone complained. (Not us, as we accepted the status, and planned our meals around our equipment.) The outdoor barbecue grill was deeply crusted by burned food and the only thing we put on there was a pot for water our first morning. There were two small grills that we could use in the kitchen area, but no butane was provided for those grills. So, within two days, we purchased a \$30 propane grill and found fuel for our backpacking stove. We cooked all our meals on our own equipment. There was a nice deck outside the food truck with a table and chairs, and actually a very nice one on the other side as well.

That second area came in very handy the day it rained. There was also a sink for rinsing and for water. For about four days, propane warmed the water coming out of the sink and then that ended.

The only warm water in camp was in the showers.

Each tentalow has its own shower, or in a couple cases, two tentalows share a shower. The water was warm, though we had some troubles with our shower for a couple days when the water would not get warm. The camp manager had that fixed. We never used the showers in the main restroom, but a couple of tenters did as well as various people, including youths, who were not staying in the camp. They used these toilets as well and they were the only toilets (two in the men's and one in the women's) in camp. They were nice flushing toilets, but the women's was only cleaned once in the two weeks we were there and the men's about the same. The main restroom and showers drain into a septic tank, and men are asked to use the portapotty. Toward the end of our stay, the septic tank was nearly full and the camp managers warned us they were locking the bathroom doors to keep non-campers out, and were concerned that the tank would overflow.

The tentalows are small but serviceable for a couple. And the bed was comfortable and the sheets clean. We laundered our own sheets, and purchased additional towels for the shower, as there were no towels provided.

There was a water hose at our tentalow and we could either use that, the kitchen sink, or the bathroom sink to fill our water bottles or get water for cooking.

An earlier reviewer stated that they charged electronics in the food truck. In our two weeks there, there were three days when one could charge something in the food truck. The rest of the time, there was no electricity (though the camp manager kindly offered to charge things in the main office). The tentalows do not have electricity and this time of year the solar has less time to recharge, so be prepared in the winter months to bring your own lighting.

So, here's the thing: \$65 a night, in Kauai, on the beach, is hard to beat. And I'm glad that the money we paid goes to youth and families in the area. The camp managers were very kind and helpful and responded to our very few requests.

It just seems that it wouldn't take much to raise the level of this experience for camp residents by regularly cleaning the bathrooms and monitoring the use by locals, emptying the trash cans, and lighting and cleaning the kitchen (food truck) and providing some basic cooking amenities – or don't offer the kitchen at all. In a well-managed campground, these are fairly basic services.
(Source: traveladvisors.com)

#63



Sincerely Yours:

James K Torio 4/23/16

James (Jimmy) Torio
Co-founder: Anahola Homesteaders Council (AHC)
P.O. Box 51 Anahola Hi. 96703
Cell: (909) 639-9290
E-mail: jktorio@anahola.net

"You cannot change the direction of the wind but you - can change the direction of the sail"

Freitas Jr, Robert C

From: DHHL.Planning
Sent: Wednesday, May 04, 2016 9:34 AM
To: Freitas Jr, Robert C
Subject: FW: 25 year lease on the 8 acres of DHHL land in Anahola

#64

For the record.

M. Kaleo Manuel
Acting Planning Program Manager
Planning Office
P: (808) 620-9485
F: (808) 620-9559

Department of Hawaiian Home Lands
Mailing: P.O. Box 1879, Honolulu, HI 96805
Address: 91-5420 Kapolei Parkway, Kapolei, HI 96707

NOTICE: This information and attachments are intended only for the use of the individual or entity to which it is addressed, and may contain information that is privileged and/or confidential. If the reader of this message is not the intended recipient, any dissemination, distribution or copying of this communication is strictly prohibited and may be punishable under state and federal law. If you have received this communication and/or attachments in error, please notify the sender via email immediately and destroy all electronic and paper copies of the original message.

From: Lynn [mailto:rpizzullo@hawaii.rr.com]
Sent: Wednesday, May 04, 2016 8:54 AM
To: Leatrice.W.BurrowsNuuanu@hawaii.gov; DHHL.Planning <dhhl.planning@hawaii.gov>
Subject: 25 year lease on the 8 acres of DHHL land in Anahola

I am a land owner on Anahola Beach, whose property is adjacent to DHHL land.

I have owned the property for almost 20 years & have lived here for the last 10 years.

I have taken it upon myself to maintain the DHHL land---mowing & raking the lawn, trimming the naupaka, & ,out of my own pocket, having the palm trees trimmed twice a year.

~~~~~  
In 2012 the homeowners on Anahola Beach were informed that a permit was being sought for the DHHL land west of Poha Road to Camp Faith (according to Kaipo Duncan, Land agent for DHHL) to develop Kumu Camp, a place where native Hawaiian youth could develop a better awareness of their heritage & culture. The way it was presented seemed to be a great use of the land. Initially, there were native Hawaiian youth, youth groups from Kauai, & mainland youth that were staying at Kumu Camp.

The permit description never mentioned the 3 acres fronting the beach homes. Soon, however, Robin Danner, the Director of Kumu Camp, started to expand her authority beyond the Kumu Camp. She approached

the Anahola Beach property owners & asked us to give \$1,200 to the Kumu Camp. The money was to be used to trim the palm trees on the DHHL land fronting our properties.

When many of us stated that we wanted to continue having the trees trimmed by our landscapers, she informed us that there would be tentacles built on the 3 acres & our access to the beach would be encumbered. In addition, she & some of her staff would constantly walk, drive a golf cart through, or bring groups of people, taking pictures of our houses, along the 3 acres to harass the property owners.

~~~~~  
Kumu Camp, as had been initially presented, never materialized. Instead the Camp has become a place for homeless to stay, locals & vacationers to set up campsites, & Mainland vacationers to stay. Trash is left throughout the camp &, eventually, finds it's way out onto the beach. On numerous occasions, when we walk our dogs there have been wine bottles, liquor bottles & beer cans sitting on tables or strewn around the camp & nearby beach.

Is Kumu camp still non-profit?? Where is the monies from the on-line vacation rentals & weddings going?

~~~~~  
It is my opinion that 25 years is too long of a lease for the Kumu Camp, at this time. I think a shorter period, say 5 years, would be more in order. The Kumu Camp would then have to show that they are complying with the guidelines set by the DHHL for the use of the land in order for the lease to be extended.

I, also, feel that the Kumu Camp should only have a permit for the present 5 acres; & the 3 acres fronting the beach homes should not be included in their permit.

Thank you for your time & consideration in this matter.

#64

received 4/27/16.

Marie M Torio  
4444 Hokualele Road POB 51  
Anahola, HI 96703

Marie M Torio

#65

April 22, 2016

Aloha Mai,

There were many who spoke at the DHHL Beneficiary Meeting held at the Anahola clubhouse on April 9th. Unfortunately there was an important question that should have been considered (Should DHHL award a long term lease or license to AHHA and or HCDC?) Had this question been listed most certainly there would have been an astounding **NO WAY!** No Lease no License to AHHA & HCDC.

It is a no brainer Kumu Camp is a great project culturally, socially, and as a revenue generator. However, it needs to be done correctly as was echoed by Kanu's principle, Ipo Kauhane-Torio and a few other attendees. The original idea for Kumu Camp was to enable Kanu students to utilize the area for ocean studies and other activities. It was also to provide the means to invite other schools to participate and eventually to be able to sleep over night. However, like many of the projects here in Anahola, it morphed into a commercial endity.

Why was the waste water component not included in the environmental quality assessment? Why would you not address this concern with the project so close to the ocean? I would dare say someone's pocket got some \$\$\$. I recall someone saying our Kupuna burial ground was in the sand dunes is not the camp area on sand dunes? If just on these two issues I would not accept this EIS why would you? Am I being too cynical or is DHHL being too naïve or too accommodating. Hello wake up smell the roses. Do not accept this no finding judgement until an in-depth study is done which addresses waste water concerns and burial study.

Haulani Fernandez's alternative is worth considering. Move camp area and turn present location into a grassed park. I would further suggest moving Kumu Camp to Camp Faith where there is ample infrastructure, water and existing roads, possible septic tank. Perhaps Hokualele Canoe club will also be able to utilize same area for their youth canoe activities.

.....



#65

Let's get to the heart of this hewa. Suffice it to say should you listen to the video of the April 9th meeting there was a lot of referencing toward Robin Danner and or AHHA. One does not need to be a rocket scientist to realize Robin Danner is the problem for such divisiveness within our community. If you were to google Robin Danner an array of interesting projects and a lot of questionable outcomes will pop up.

Had it not been for Robin Danner Project Faith would have completed most of the planned economic components for the 20 acre project site. In its place we have to now pass a metal jungle of solar panels on highway frontage. Some part time jobs for the installation of the solar panels and perhaps a community project director job was created. This solar project has not generated any direct benefit to the community. With the exception of the \$50,000 a year payment to AHHA how has this project actually benefited the Anahola community? Incidentally the meeting that Robin claims the Anahola Kupuna attendees endorsed the Solar Project was frivolous. AHC held meetings with many of the Kupuna who was present at that meeting and majority say they opposed the idea for this solar project. Many proclaimed community projects were done on similar pretenses. See Attachment

After all videos and testimonies have been evaluated I'm hoping positive changes may be implemented to empower the Anahola community to work together for a better future for the next seven generations.

Will we be notified as to when Kumu Camp disposition goes before the HHC? It really should be done here on Kauai but I guess as long as we have at least a week notice so some community members can speak before the commission. AHC was never given a courtesy call to attend the HHC regarding deposition of License 540. In my opinion this was purposefully maneuvered by Ms Chin to set Robin in gear for the KIUC project. Hopefully as we plan for a better future there will be more transparency and policy and procedure in place that will enable empowerment within our homestead communities.

Mahalo Nui : Marie M Torio - AHC Secretary



# 66

Freitas Jr, Robert C

**From:** AHHA <anaholahha@gmail.com>  
**Sent:** Thursday, May 05, 2016 9:11 PM  
**To:** Aila Jr, William J; Pua Chin; Freitas Jr, Robert C; Cairel, Gigi O; McPherson, Nancy M; Duncan, Kaipo  
**Cc:** Kahala Hoomanawanui; Lorraine Rapozo; KipuKai Kualii; sherricummings112569@gmail.com; carly; robin.puanani.danner@gmail.com  
**Subject:** Fwd: STOP KUMU CAMP DEVELOPERS!!

Hi DHHL -- you should probably include in your consultation report, the distribution of wild accusations by non-beneficiaries such as this guy, saying outlandish things about Kumu camp. Jet skis? Boat tours?

At any rate, please document your report properly so that comments are properly categorized. This guys email list is so big, he uses constant contact software.

Mahalo.

Begin forwarded message:

**From:** "Richard Diamond" <kauaimuse@gmail.com>  
**Date:** April 26, 2016 at 7:47:24 PM PDT  
**To:** <dnakauai@yahoo.com>  
**Subject:** STOP KUMU CAMP DEVELOPERS!!  
**Reply-To:** kauaimuse@gmail.com

*The Kava'i MuseLetter*  
*"HeartBeat of Kava'i"*



**ALOHA KA KOU!**

Aloha Friends, Neighbors and supporters of the Anahola Community,

**ATTENTION:** The Department of Hawaiian Homesteads (DHHL) is seeking responses from our Anahola Beneficiaries and also Non-Hawaiians whose lives have been impacted or will be impacted or influenced by the development of KUMU CAMP.

Kumu Camp is seeking a **25 year lease** to develop our precious Anahola Bay beach front and is currently vacation renting illegal yurts. 25 years is plenty of time to turn Anahola Bay into a hectic traffic buzzing little tourist attraction...another mini commercial Waikiki....Augghhhh!!!

Your input to the DHHL Commissioners will certainly help them to decide whether our community wants this development here on the bay or NOT. Do we really want to commercialize our "Country Style" beach or

fishing grounds? Please share your thoughts or concerns. Let's Keep Anahola "Country"! MAHALO!!

#66

Right now they want to have jet ski, parasailing, paddle boarding and surf lessons and boat tours on the bay and river. This will change the face of our country beach drastically and basically commercialize our peaceful fishing and local family beach day grounds. The pollution from the seeping septic tanks will certainly destroy the ecology of the ocean here; they also have illegally structured vacation rental huts, sub-standard sewage treatment, and most of all they are desecrating our ancestor's burial grounds. These grounds are mapped by the Archeological Society as "Burial Dunes"!! WE DO NOT WANT THEM TO ACQUIRE THIS LEASE!! We have gotten a petition of about 1000 Hawaiian DHHL Lessees who are against this Developer's project at Kumu Camp.

The DHHL wants to hear from other Non-Hawaiian residents that live here or friends that come here regularly as well, so now is the time to step up to the plate and voice your concerns or thoughts as you too will be directly affected by this development. Please take a couple of minutes out of your day to save this community from being turned into a resort. Our commissioners do not live here, they need to know the truth from people who live here.

Please share and pass this email address on to your friends and neighbors who may want to give testimony. You can address your concerns to the secretary of the DHHL Commissioners, Leatrice at: [Leatrice.W.Burrows-Nuuanu@hawaii.gov](mailto:Leatrice.W.Burrows-Nuuanu@hawaii.gov) or [dhhl.planning@hawaii.gov](mailto:dhhl.planning@hawaii.gov)

Mahalo for helping us keep Anahola...Anehola!! Your email can make the difference we need!!

Always with Aloha,

---

Visit us at:  
[HeartBeatofKauai.com](http://HeartBeatofKauai.com)

**Disclaimer:** The information on this museletter is presented for educational purposes only. It is not intended as a substitute for your own research into anything that is mentioned. No statements have been evaluated by the Food and Drug Administration [or anyone else] and these materials and products are not intended to diagnose, treat, cure or prevent any disease. If there are any offers for nutrition, medical treatments, or to attend any event mentioned, health or otherwise, it is recommended that you act FREE and on your OWN recognizance. The provider of all information, the Muse, is a

## Freitas Jr, Robert C

---

**From:** DHHL.Planning  
**Sent:** Tuesday, May 10, 2016 10:27 AM  
**To:** Freitas Jr, Robert C  
**Cc:** Manuel, Kaleo L  
**Subject:** FW: Anahola Sand Dune Burial Grounds (Kumu Camp development)

#67

-----Original Message-----

**From:** phunterwilliams@gmail.com [mailto:phunterwilliams@gmail.com]  
**Sent:** Monday, May 09, 2016 6:53 PM  
**To:** Masagatani, Jobie K <jobie.k.masagatani@hawaii.gov>; Burrows-Nuuanu, Leatrice W <leatrice.w.burrows-nuuanu@hawaii.gov>  
**Cc:** DHHL.Planning <dhdl.planning@hawaii.gov>  
**Subject:** Anahola Sand Dune Burial Grounds (Kumu Camp development)

Aloha Chair Masagatani, Commissioners, and Planning Dept.,

I attended the April 9, 2016 meeting held in Anahola regarding this development and wondered who was responsible for the agenda and PowerPoint slides - DHHL or HCDC?

As opposed to seeking Beneficiary input, it felt very skewed toward attempting to garner Beneficiary support for the HCDC development (not AHHA development since both HCDC and AHHA state HCDC "owns and operates AHHA projects" which is problematic). It also did not reflect an accurate and honest portrayal of "Planning Activities".

Further, in this case, Anahola community and island community input about the development should not be dismissed and should be considered along with Beneficiary input since the development is 1) in the middle of a predominantly fee simple residential area with just a few Leasee residences (which have been welcomed). DHHL should not discount the input of neighbor homeowners on Anahola Road and nearby Roads (many of whom are also Beneficiaries but not Leasees) and should have required their input be sought, with documentation, as a condition of the initial permit process. This still has not been done; and 2) adjacent to a public beach (so the operations of the developers effect ALL utilizing the public beach - the Beneficiary community along with the Anahola community and larger island community).

PowerPoint slides such as the 'Meeting Objectives' which read:

"At the end of the day we will have:

- \* An indication of support for long term license
- \* Shared understanding of the Kumu Camp Project
- \* List of the Project's social, cultural, & economic benefits to the HHCA beneficiary community
- \* Indication of the level of Beneficiary support for the programs and services provided by Kumu Camp"

felt weighted, biased, and worded in such a way as to assume Beneficiary support and the assumption of Beneficiary community benefits being provided.

If unbiased, and strictly seeking input, they SHOULD have read:

"At the end of the day we will have:

- \* Input for long term license decision-making -OR- An indication of support or lack of support for a long term license
- \* Been presented the developers' understanding of the Kumu Camp Project (because there is no shared understanding of the Kumu Camp Project between the developers and many members of the Beneficiary community, the Anahola community, and the larger island community. What was on the original application which DHHL permitted, and the

reality of the operation are two distinct and different things. The development has created unnecessary controversy and division in both the Beneficiary and Anahola community, where there was none, with DHHL being in the center as the permit grantor)

\* List of the Project's social, cultural, & economic benefits to the HHCA beneficiary community AND List of the Project's social, cultural, & economic detriments, disadvantages, drawbacks, and costs to the HHCA beneficiary community

\* Indication of the level of Beneficiary support or lack of support for the programs and services provided by Kumu Camp"

Other PowerPoint slides did not accurately or honestly reflect "Planning Activities", such as the exclusion of:

1) DHHL being required, by law, to mandate an EA as part of the permit process, but failing to do so under the former DHHL Chair (and then rightfully requiring it under Chair Masagatani's mandate);

2) the developers beginning cleaning and clearing of the area before the DHHL permit was issued in 2011;

3) the developers being notified by DHHL in two separate letters of January 18, 2013 and May 10, 2013 about their failure to follow the DHHL permit agreement by not obtaining proper County permits for the construction of tentatolows. The DHHL letter of May 10, 2013 informed HCDC to cease and desist all construction and rental activities because of the non-compliance;

4) the August 29, 2013 DHHL letter to Kaua'i Mayor Bernard Carvalho, following the June 21, 2013 meeting with DHHL officials and the Mayor, wherein the above was noted that because the developers were in violation, no revocable permit to HCDC was issued;

5) the developers being issued a Cease and Desist Order from the DOH on March 13, 2013 because of a food truck;

6) the developers installing a wastewater system - without a permit - prior to an August, 2013 DOH investigative site visit, and subsequently being issued a Notice of Violation from the DOH on October 10, 2013;

7) the developers being issued a DHHL Non-Compliance with Letter of Conditions and Cease and Desist letter of November 29, 2013 for violations as noted above and for not obtaining a Shoreline Management Area permit, the clearing and cutting of trees on DHHL lands not issued under the Letter of Conditions to HCDC, and the numerous complaints received by DHHL regarding the blocking of Poha Road;

8) the developers receiving grant money to purchase a boat and their intent to have commercial boat tours in Anahola River;

9) the developers providing commercial surf lessons and their intent to have commercial kayak and SUP rentals;

10) the developers providing commercial yoga retreats and lessons, along with commercial massage services;

11) the developers starting a commercial web site (see [www.anaholabeachretreat.org](http://www.anaholabeachretreat.org)) which drives more commercial traffic to the property and which notes hot private showers and bathrooms (yet the wastewater system to support this is still not permitted, was supposedly capped and not in use according to the developers, and the developers maintained they were exclusively using porta-potties while they have had flush toilets).

As a resident of Anahola for over 40 years, who owns a fee-simple home on Anahola Road a couple of doors down from the development along with my husband who is also a Beneficiary and an Anahola Farmlot Leasee, my concern about the development has always been two-fold. First, the location being the Anahola Sand Dune Burial Grounds, which I have known about since I was a teenager, and second, the environmental effect.

There are THREE significant site numbers attached to the Anahola Sand Dune Burial Grounds, where the Kumu Camp development is located, by the Burial Council and the State Office of Historic Preservation. This is an inappropriate place to have a campground - PERIOD. It's disrespectful.

Irrespective of the claim there have been no disturbances (and it should be noted the developers do not have credentials or expertise in this area and nor did anyone involved in cleaning/clearing the area and it's possible an untrained eye would not be aware of a disturbance especially when heavy equipment is being operated), this IS the Anahola Sand Dune Burial Grounds and respect for 'iwi Kupuna should be shown. That, alone, is reason to deny a long term license (and, frankly, acknowledge it was inappropriate to issue a permit in the first place).

The developers consistently not following the conditions of the DHHL permit, as noted above, provides an additional reason to deny a long term license. If DHHL has had difficulty reigning in the activities of the developers under a right-

# 67

of-entry / month-to-month revocable permit, one can only imagine what could occur with the developers having a long term lease.

The commercial activity on the beach, in the ocean and in the river being conducted or proposed were not disclosed as a part of the original application and present social, environmental and cultural concerns to members of the Beneficiary community as well as to members of the Anahola and island community. Commercial activity on the beach, in the ocean and on the river is not wanted in the very rural Anahola area. This, too, provides reasons to deny a long term license.

Finally, the combined OVER 500 signatures garnered from a 2012 petition expressing concern during the earlier stages of the development to the more recent December, 2015- March, 2016 petition (sent verified receipt to Chair Masagatani and Commissioners) calling for the current development to be closed and the permit permanently withdrawn provide more than enough reasons to deny a long term license. There are appropriate and needed places for mercantile activity as called for in the HHCA - a known burial ground site in a rural residential area is not one of them.

Sincerely,  
Pat Hunter-Williams  
4211 Anahola Road  
PO Box 127  
Anahola, HI 96703

Sent from my iPad