



Honolulu Rail Transit Project Update

Hawaiian Home Lands Meeting with the Kapolei Homestead Community

June 20, 2016

H O N O L U L U R A I L T R A N S I T P R O J E C T

WWW.HONOLULUTRANSIT.ORG

HART

HONOLULU AUTHORITY for RAPID TRANSPORTATION

20 Miles – 21 Stations



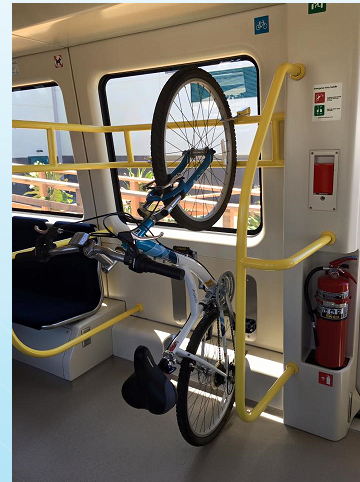
Transportation Benefits



- Integrated multimodal system
- Average weekday ridership of more than 119,000 trips
- Connects several college campuses, retail centers (Pearl Ridge, Ward Villages and Ala Moana Center), job centers at Pearl Harbor and the downtown financial district, and the Honolulu International Airport

System & Rail Vehicle Features

- Operates 4 AM to Midnight
- Trains every 5 min. to 11 min.
- 30 mph to 55 mph
- Integrated with TheBus
- Cultural motifs & artwork
- Four car train: 190 seats, 8 wheelchair areas
- Flip up seats for more wheelchair areas
- Space for luggage, motorized wheelchairs, strollers, surf boards, bikes
- Audible & visual messages inside vehicle
- Emergency phones in vehicles & stations
- Accessible gangways to all four cars



Safety Features: Platform Screen Gates

- Level Boarding
- Automatic Platform Safety Gates 5 feet high
- Audible signal and light when doors open
- Open simultaneous with rail vehicle doors
- Truncated Domes at gate openings, safety yellow for contrast
- Computer controlled, opens only when train is parked at station



Overall Construction Sequence

Utility Relocations



Shaft Foundations



Column Construction



Guideway and Track Installation



Stations Construction



Roadway Restoration

Utility Relocations



Drilled Shaft Work



Drilled Shaft Work



H O N O L U L U R A I L T R A N S I T P R O J E C T

www.HONOLULUTRANSIT.ORG

HART

HONOLULU AUTHORITY for RAPID TRANSPORTATION

Column Construction



Column Construction



H O N O L U L U R A I L T R A N S I T P R O J E C T

www.HONOLULUTRANSIT.ORG

HART

HONOLULU AUTHORITY for RAPID TRANSPORTATION

Column Shaft Construction



Guideway Installation



Guideway Installation



Guideway Installation



Track Installation



H O N O L U L U R A I L T R A N S I T P R O J E C T

www.HONOLULUTRANSIT.ORG

HART

HONOLULU AUTHORITY for RAPID TRANSPORTATION

Track Installation



Station Columns

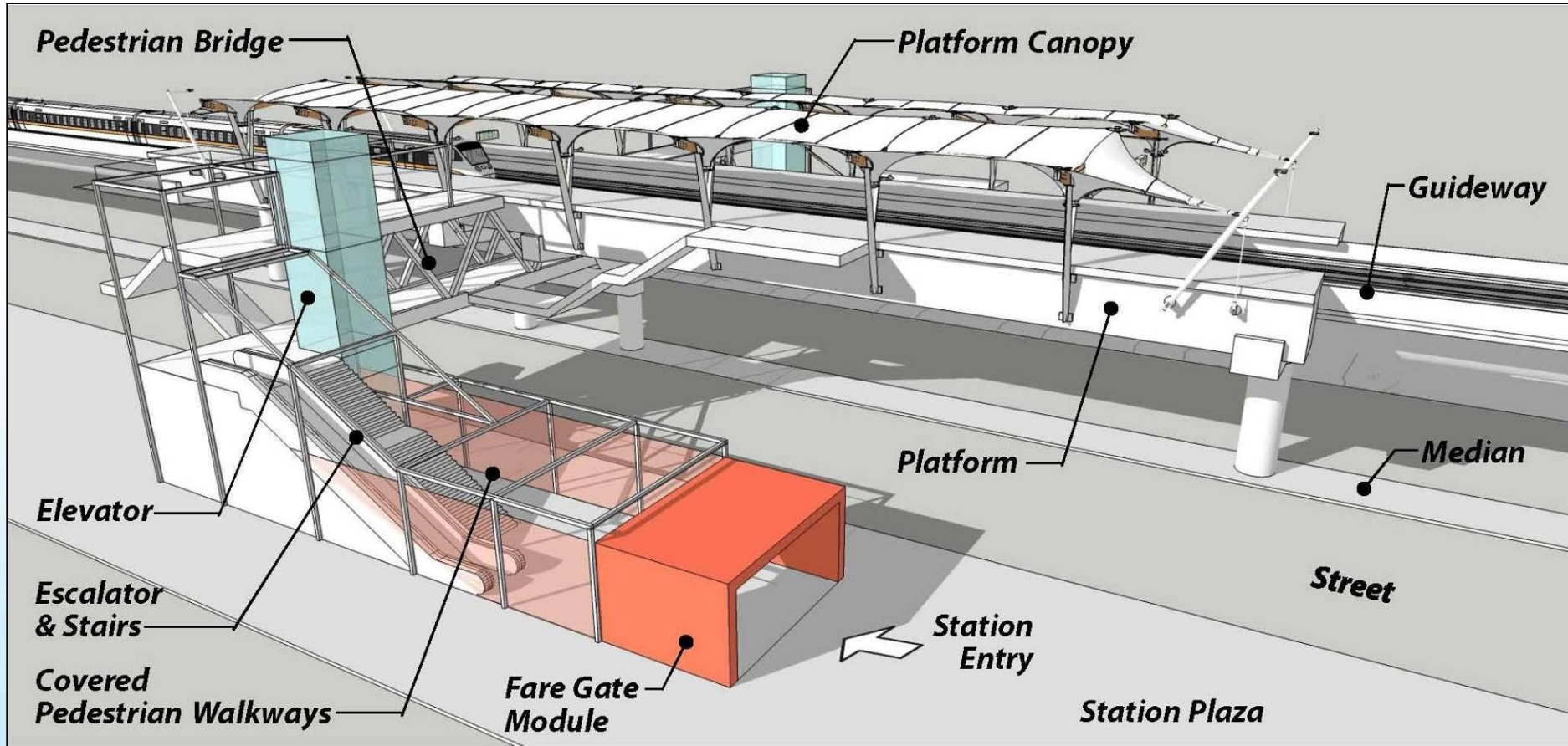


Roadway Restoration



Station Diagram

Side Platform



Nan Inc

West Oahu Stations Group

July 1, 2015

Nan, Inc. awarded contract to build three rail stations in West Oahu

March 28, 2016

Groundbreaking and blessing takes place for the East Kapolei, UH West Oahu and Ho'opili Stations



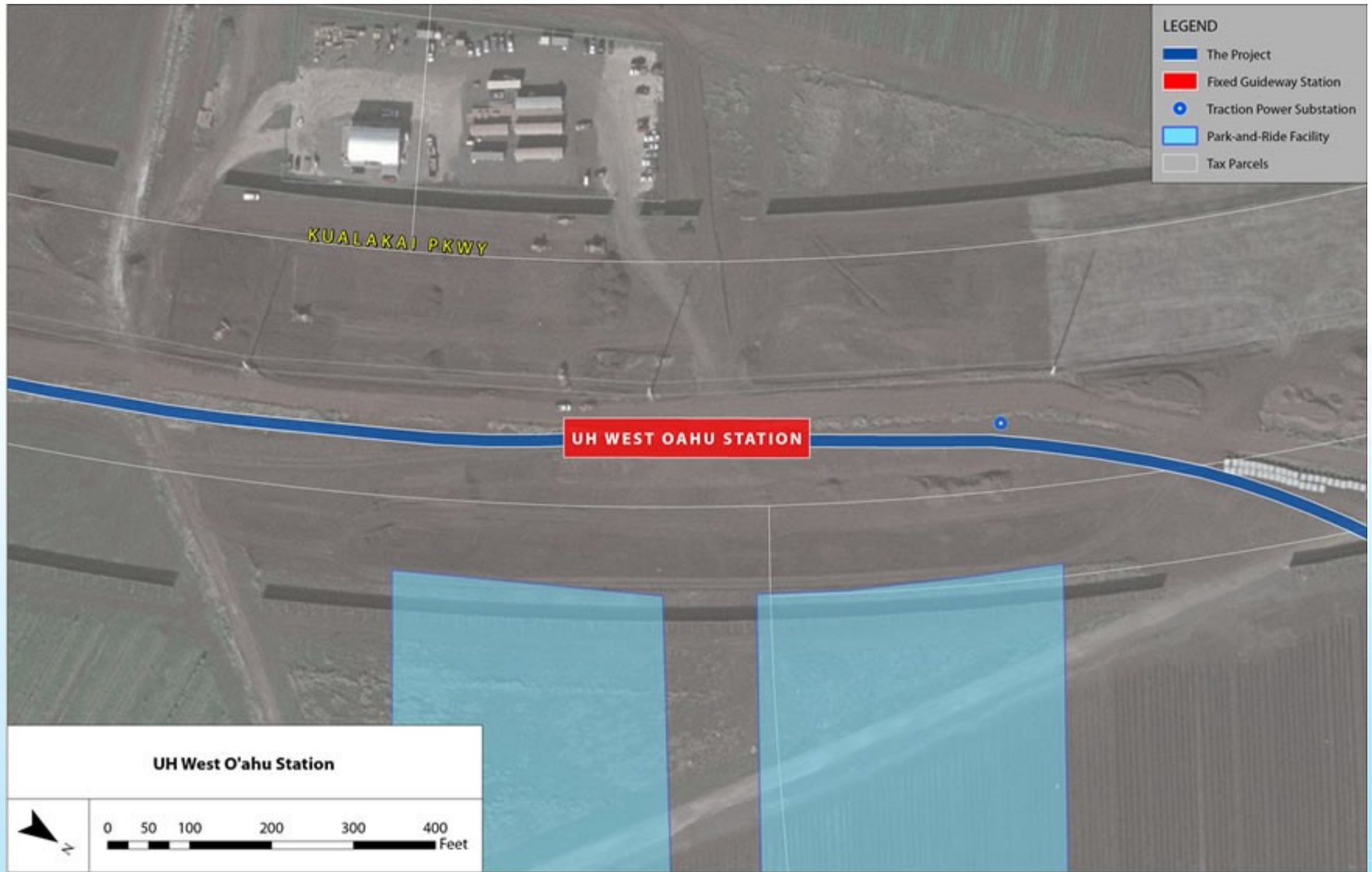
East Kapolei Station



East Kapolei Station



University of Hawai'i West O'ahu Station



University of Hawai'i West O'ahu Station



H O N O L U L U R A I L T R A N S I T P R O J E C T

www.HONOLULUTRANSIT.ORG

HART

HONOLULU AUTHORITY for RAPID TRANSPORTATION

Ho'opili Station



Ho'opili Station



H O N O L U L U R A I L T R A N S I T P R O J E C T

WWW.HONOLULUTRANSIT.ORG

HART

HONOLULU AUTHORITY for RAPID TRANSPORTATION

Nan Inc

Construction Timeline

Station	Start/Estimated Start Date	Estimated Completion
Ho'opili	March 2016	Summer 2018
U.H. West O'ahu	July 2016	Summer 2018
East Kapolei	August 2016	Summer 2018

Nan Inc

Sequence of Construction

- Site Preparation
- Foundation Work
- Vertical Build
- Finish Work
- Area Restoration



Nan Inc

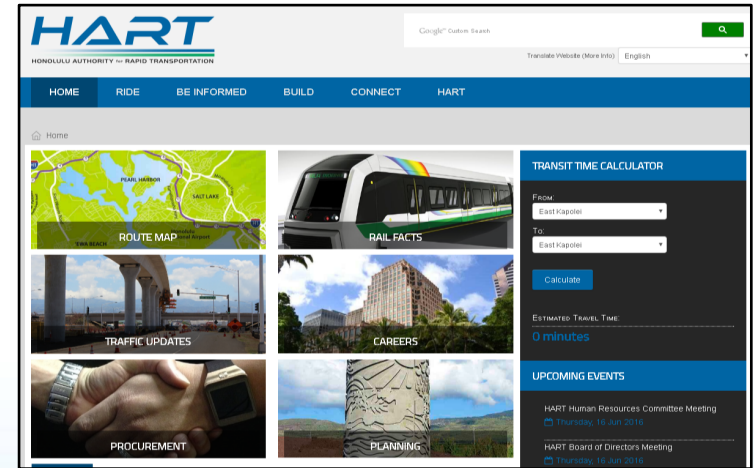
What to expect during construction

- Dust
- Noise
- Work times: Monday-Friday 7:00am-5:00pm (Holidays off)
- Increased Presence of Construction Vehicles
- Some Lane Closures

- Notification of Major Milestones/Impacts
- Informational Mailers
- e-Blasts
- Prompt Response to Inquiries

Stay Connected

- Weekly Traffic Advisories
- Weekly e-Blast
- Website and Social Media
- Public Access Television Program



HART Rapid Response:

- 24-Hour Project Hotline number 808-566-2299
- Email Inquiries: info@HonoluluTransit.org
- Website Inquiries

Mahalo!



H O N O L U L U R A I L T R A N S I T P R O J E C T

www.HONOLULUTRANSIT.ORG

HART
HONOLULU AUTHORITY for RAPID TRANSPORTATION