



HAWAIIAN HOME LANDS  
HAWAIIAN HOMES COMMISSION  
DEPARTMENT OF HAWAIIAN HOME LANDS

# Kauai Community Meeting

August 21, 2017

Chiefess Kamakahelei Middle School



HAWAIIAN HOME LANDS  
HAWAIIAN HOMES COMMISSION  
DEPARTMENT OF HAWAIIAN HOME LANDS

# Chairman's Update

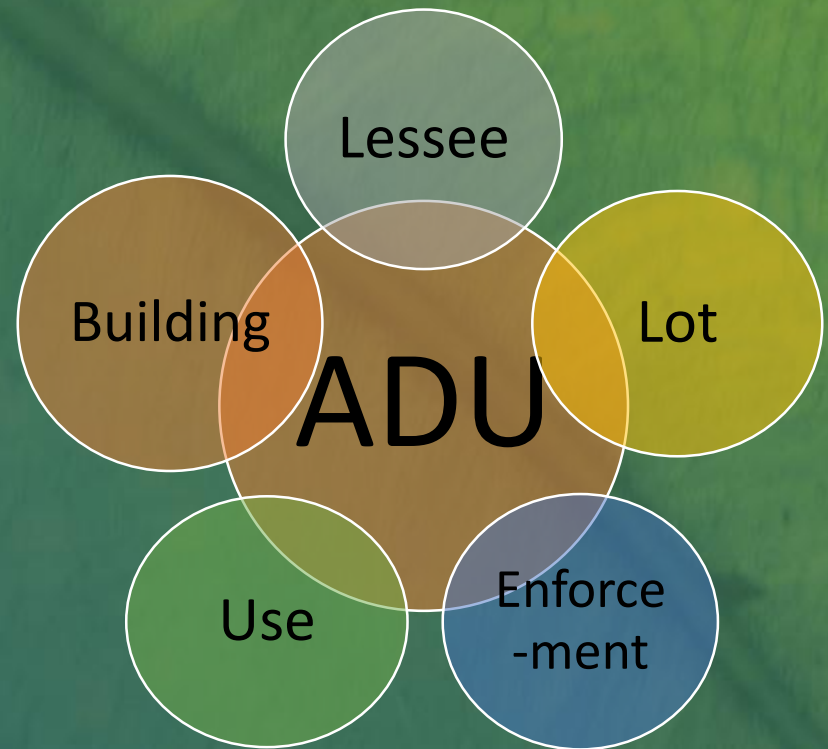
# 2017 DHHL Legislation Update



- (HB451) Lower Blood Quantum to 1/32 for Successors
- Signed by Governor Ige on the Molokai, July 5, 2017
- Still needs Congressional Approval

# ADU Program Considerations

- DHH and County processes
- Components
  - Lessee: good standing
  - Lot: size, infrastructure
  - Use: 'ohana, rental
  - Building: size, attached/detached
  - Enforcement





# Administrative Rules Upcoming Consultations

- Water Systems and Planning System
  - Molokai: Tuesday, August 24, 2017
- September 1, 2017 comment deadline
- ADUs, DCCRs, NHDP, Housekeeping
  - Expected Fall 2017



HAWAIIAN HOME LANDS  
HAWAIIAN HOMES COMMISSION  
DEPARTMENT OF HAWAIIAN HOME LANDS

# DHHL Budget Update

# DHHL's "Sufficient Funds" & Executive Biennium Budget FY 2018 – Purpose #4

	FY2018 DHHL	FY2018 GOV	FY2018 HB100 CD1
A & O Budget Request (A)	(260) \$31,317,280	(200) *\$25,120,730	(200) *\$25,120,730
Operating R&M for Existing Infrastructure (A)	\$3,613,000		
CIP R&M for Existing Infrastructure (C)	\$24,115,000	\$5,000,000	\$10,600,000
Total HHC A & O Budget Request	\$59,045,280	\$30,120,730	\$35,720,730

\*Includes \$6,865,887 in both FY 18 and FY 19 to reflect the fringe benefit cost

# DHHL's "Sufficient Funds" & Executive Biennium Budget FY 2019 – Purpose #4

	FY2019 DHHL	FY2019 GOV	FY2019 HB100 CD1
A & O Budget Request (A)	(260) \$31,317,280	(200) *\$25,120,730	(200) *\$25,120,730
Operating R&M for Existing Infrastructure (A)	\$3,613,000		
CIP R&M for Existing Infrastructure (C)	\$18,500,000	\$5,000,000	
Total HHC A & O Budget Request	\$53,430,280	\$30,120,730	\$25,120,730

\*Includes \$6,865,887 in both FY 18 and FY 19 to reflect the fringe benefit cost



# DHHL's "Sufficient Funds" & Executive Biennium Budget FY 2018 – Purposes #1-3

	FY2018 DHHL	FY2018 GOV	FY2018 HB100 CD1
Lot Development (C)	\$73,425,000	\$20,000,000	\$34,000,000
Loans (C)	\$75,000,000		
Rehab Projects (C)	*\$32,121,000		\$1,500,000
Rehab Projects (A)	^\$15,509,100		
Total	\$196,055,100	\$20,000,000	\$35,500,000

\*Total in both FY 18 and FY 19 reflects projects requested by homestead leaders.


^ Includes \$2,765,000 in FY 18 and \$365,000 in FY 19 requested by homestead leaders.

# DHHL's "Sufficient Funds" & Executive Biennium Budget FY 2019 – Purposes #1-3

	FY2019 DHHL	FY2019 GOV	FY2019 HB100 CD1
Lot Development (C)	\$88,975,000	\$20,000,000	\$2,900,000
Loans (C)	\$78,100,000		
Rehab Projects (C)	*\$29,050,000		
Rehab Projects (A)	^\$13,109,100		
Total	\$209,234,100	\$20,000,000	\$2,900,000

\*Total in both FY 18 and FY 19 reflects projects requested by homestead leaders.

^ Includes \$2,765,000 in FY 18 and \$365,000 in FY 19 requested by homestead leaders.

[Home](#)[Divisions ▼](#)[Legislation ▲](#)[Procurement](#)[Employment](#)[HALE](#)[Commercial Leases](#)[Site Map](#)[DHHL Budget](#)[Track Legislation](#)[Talk Story Sessions](#)[Legislative Resources](#)

INTRODUCING DHHL'S 2017 LEGISLATION PAGE

[Read More ➞](#)[Applications & Wait List](#)[Lessees - HSD](#)[Hawaiian Homes Commission](#)[Beneficiary Consultations](#)

## Introducing DHHL's 2017 Legislation Page

Posted on January 30, 2017

Introducing the Department of Hawaiian Home Lands 2017 Legislation Page. Visit [dhhl.hawaii.gov/legislation](http://dhhl.hawaii.gov/legislation) to find resources on navigating the Hawai'i State Legislature this 2017 legislative session. If you would like updates sent directly to your inbox, enter your email address in the Subscriptions section of the webpage to subscribe to any webpage updates. We've broken it down into [...]

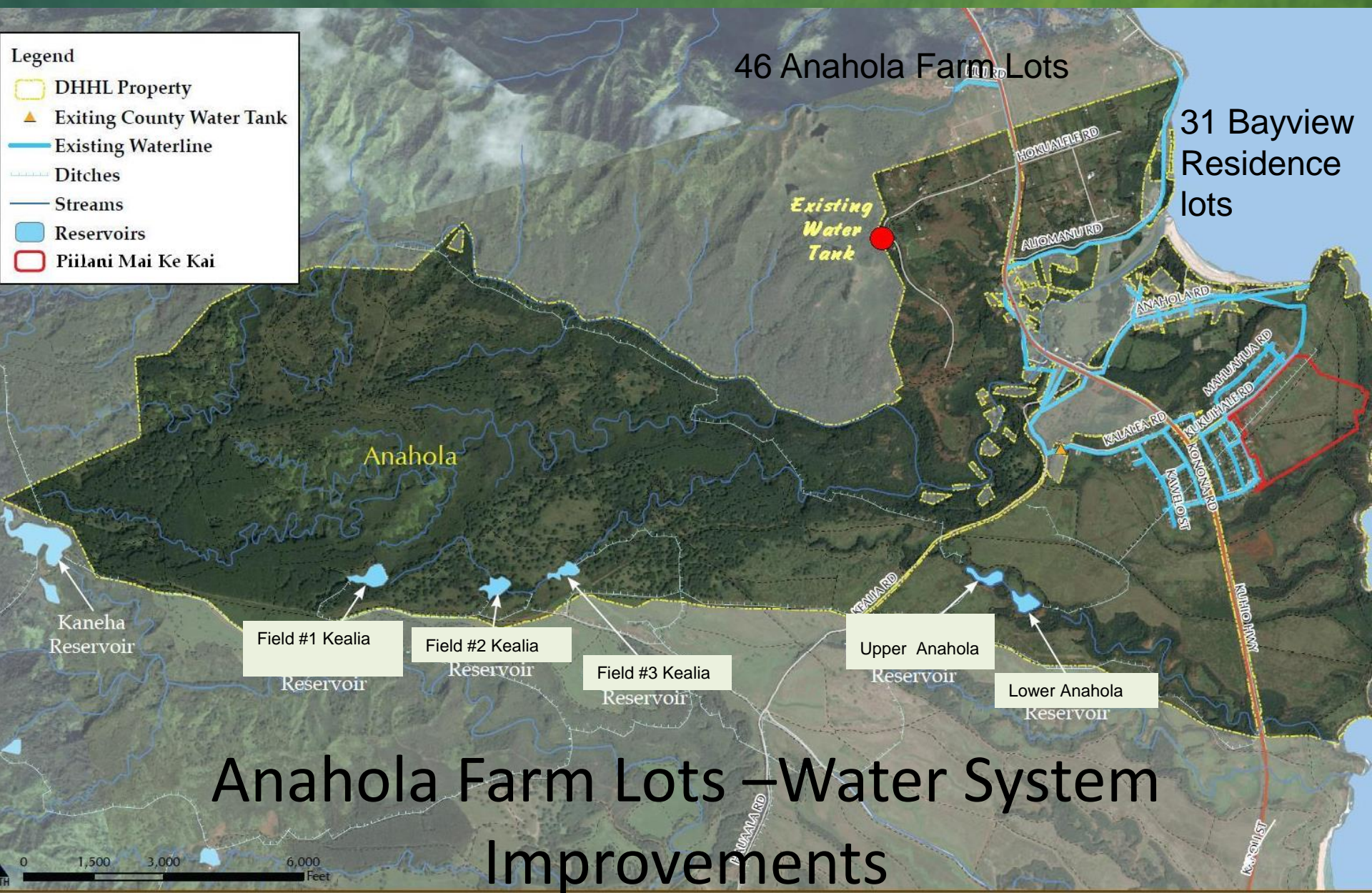
[Read More](#)



HAWAIIAN HOME LANDS  
HAWAIIAN HOMES COMMISSION  
DEPARTMENT OF HAWAIIAN HOME LANDS

# Land Development Division Update





# USDA-RURAL DEVELOPMENT FUNDING

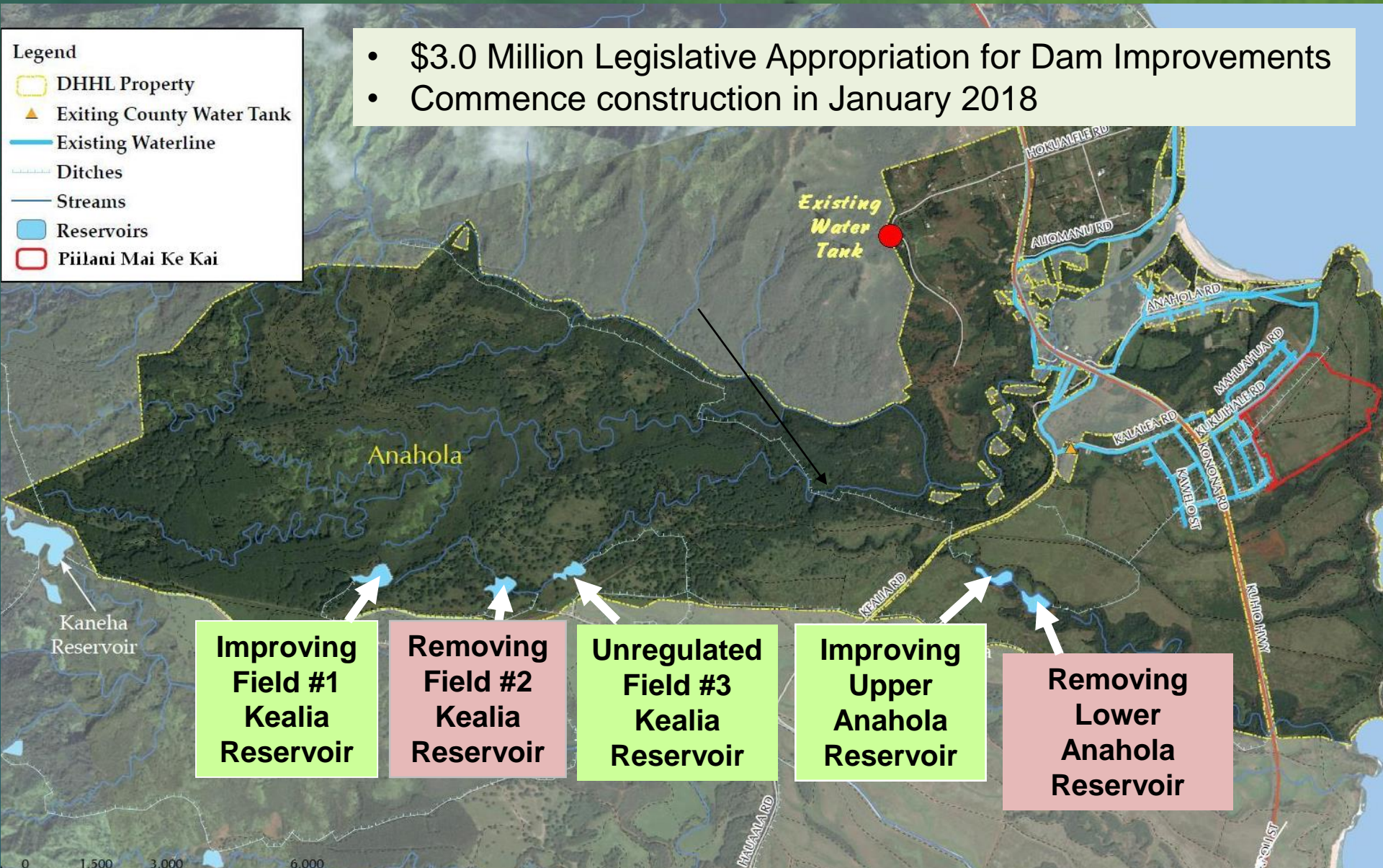
## Anahola Water System Improvements:

- New concrete water tank
- Pump Station upgrades
- Replacement of transmission and distribution pipes
- Improvement of pressure regulation in mauka and makai lots
- Upgrades to meters and backflow preventers
- Upgrades to fire protection system
- Invitation to bid by Fall 2018



# Anahola Dam & Reservoir Improvements

- \$3.0 Million Legislative Appropriation for Dam Improvements
- Commence construction in January 2018





*Pi'ilani Mai Ke Kai*  
*Subdivision*  
Total 171 Lots

Phase 1: 80 Lots

Phase 2: 51 Lots

Phase 3: 40 Lots

Kukuihale Road

Kuhio Highway

Kanuikapono Charter  
School

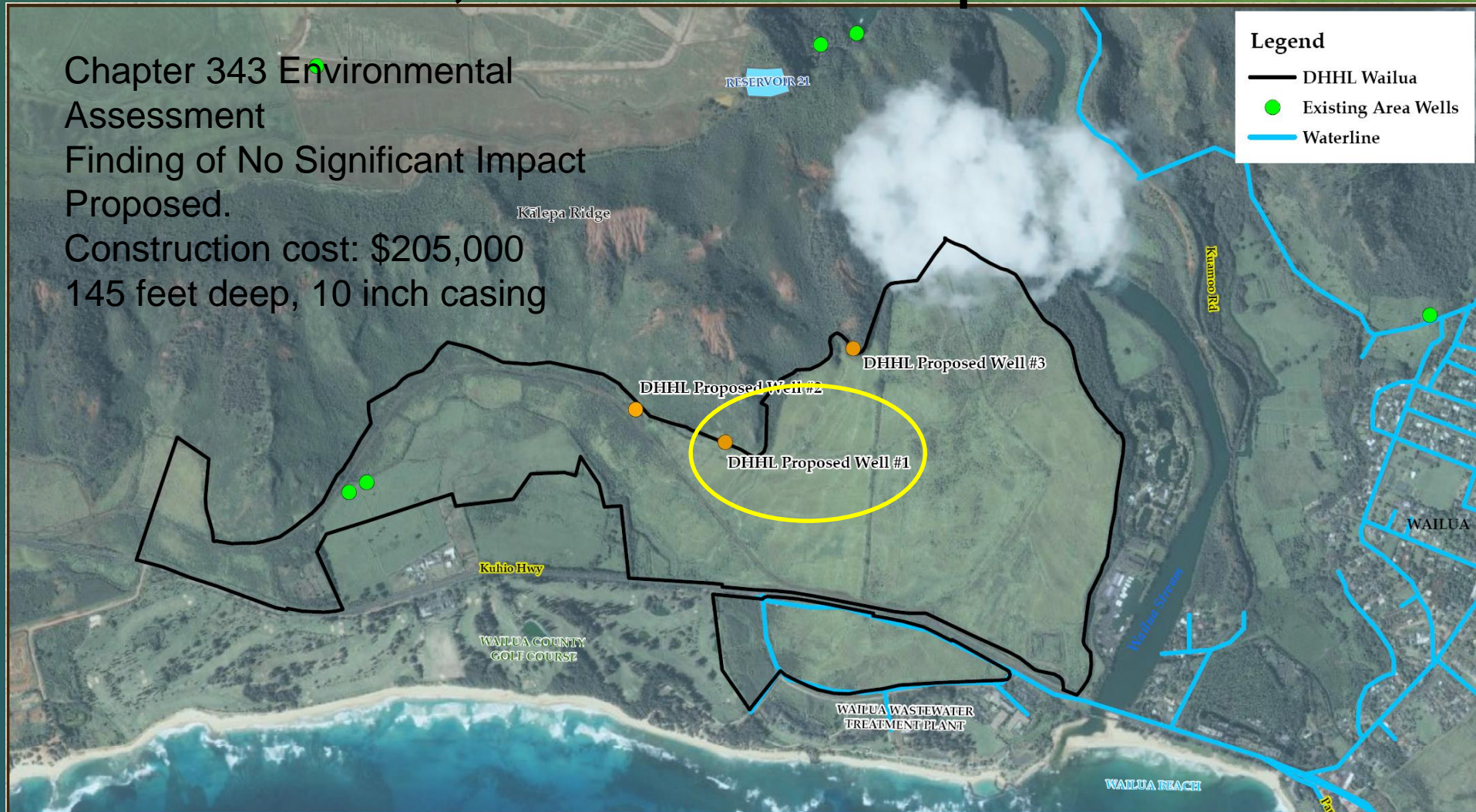
*Anahola, Kauai*



# Wailua Well #1

## Drill, Case & Pump Test

Chapter 343 Environmental  
Assessment  
Finding of No Significant Impact  
Proposed.  
Construction cost: \$205,000  
145 feet deep, 10 inch casing

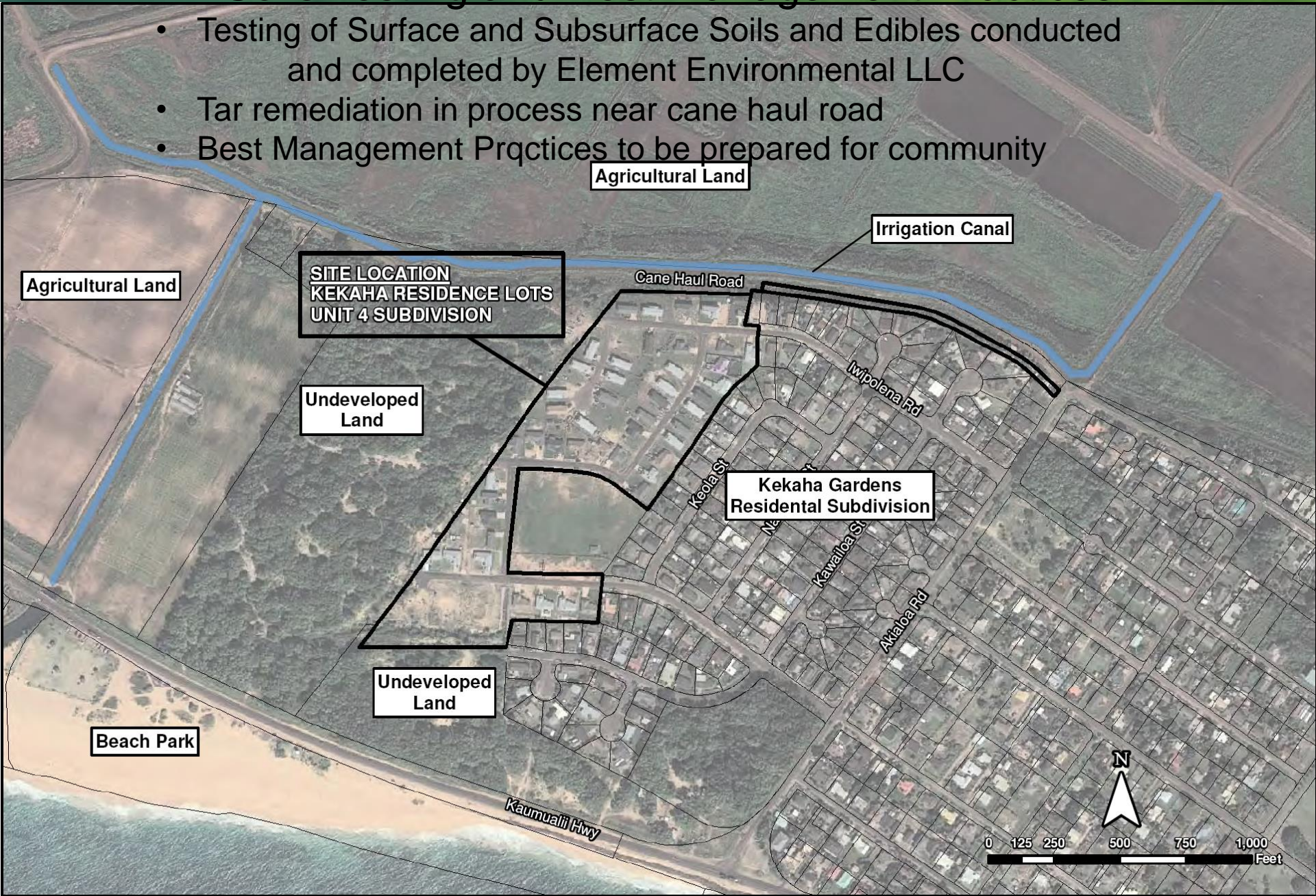




# KEKAHA RESIDENCE LOTS UNIT 4

## Soils Testing and Best Management Practices

- Testing of Surface and Subsurface Soils and Edibles conducted and completed by Element Environmental LLC
- Tar remediation in process near cane haul road
- Best Management Practices to be prepared for community







HAWAIIAN HOME LANDS

HAWAIIAN HOMES COMMISSION  
DEPARTMENT OF HAWAIIAN HOME LANDS

# Planning Office Update

# Planning Office Overview

- Beneficiaries
- Lands
- Planning Projects



# Native Hawaiian Beneficiaries

## Applications

22,737 Residence  
18,596 Agriculture  
3,047 Pasture

WAIT LIST	APPLICATIONS
Residential	1,667
Agricultural	2,217
Pastoral	325
<b>TOTAL Kauai:</b>	<b>4,209</b>

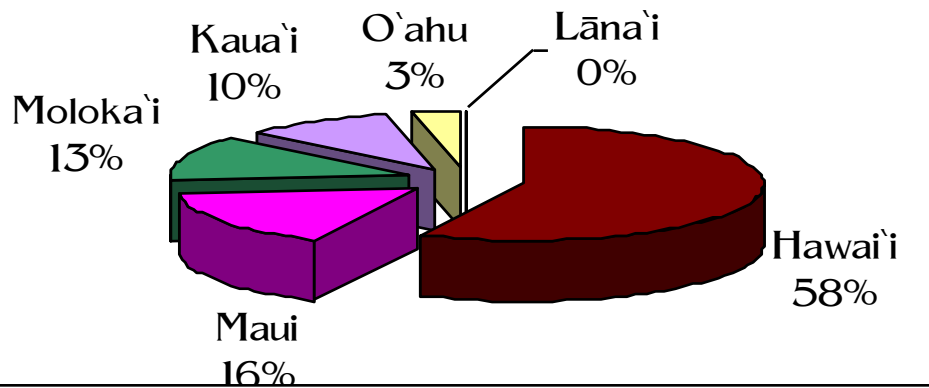
## Lessees

8,367 Residence  
1,099 Agriculture  
410 Pasture

KAUAI	LESSEES
Residential	697
Agricultural	46
Pastoral	1
<b>TOTAL Kauai:</b>	<b>744</b>

# DHHL Statewide Inventory

Hawaiian Home Lands Trust  
Percent Acres by Island



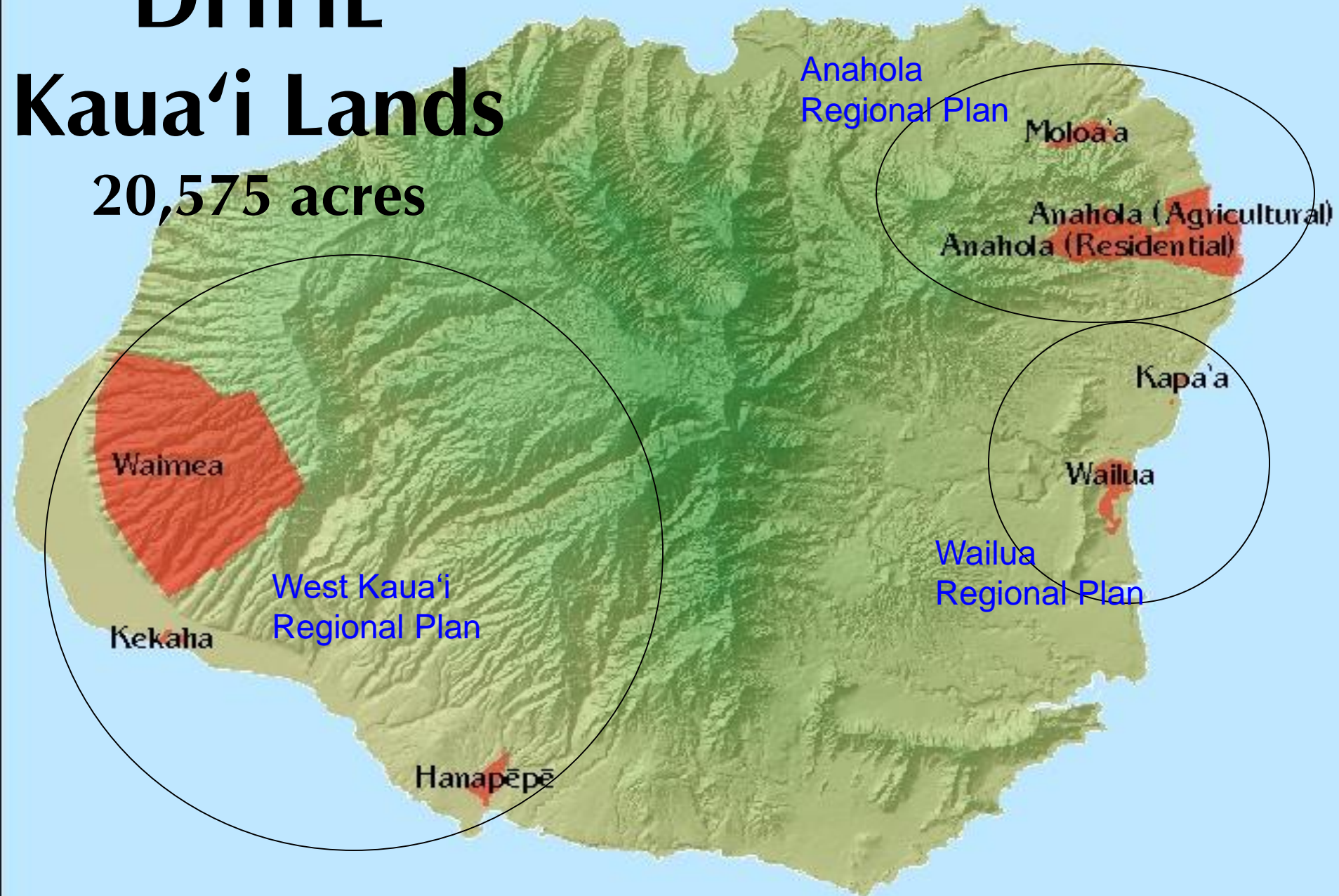
■ Hawai'i ■ Maui ■ Moloka'i ■ Kaua'i ■ O'ahu ■ Lāna'i

ISLAND	ACRES
Hawai'i	117,551
Maui	31,904
Moloka'i	25,748
Kaua'i	20,575
O'ahu	8,154
Lāna'i	50
<b>TOTAL</b>	<b>203,982</b>

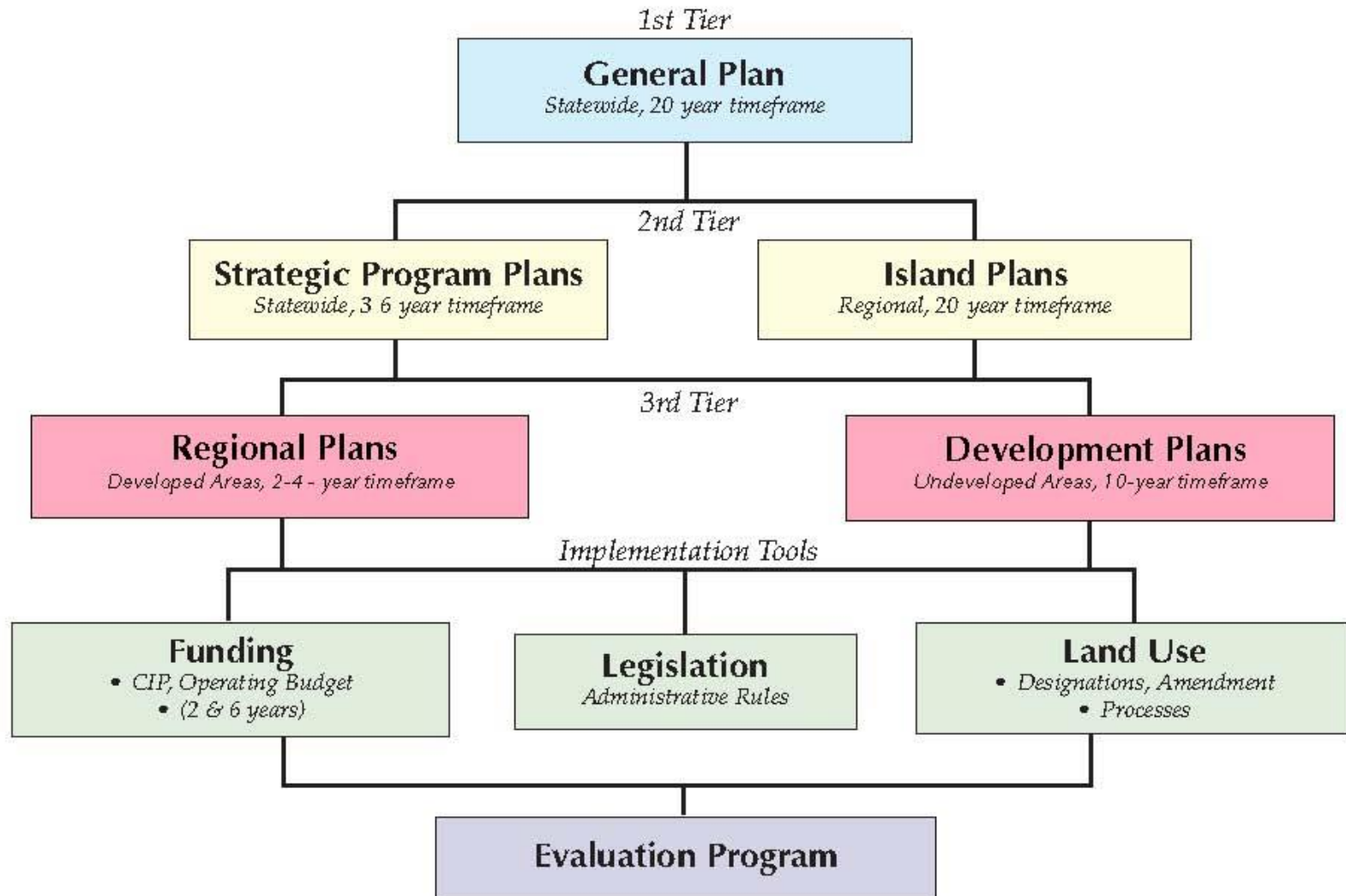
# DHHL

## Kaua'i Lands

20,575 acres



# DHHL Planning System





# Kaua'i Island Plan

- Recommends future uses on 20,565 acres of Hawaiian Home Lands on Kaua'i
- Guides overall land use patterns & development on Kaua'i for the next 20 years
- Three priority tracts for development: residential areas of Wailua, Hanapēpē, and Anahola/Kamalomalo'o

## KAUA'I ISLAND PLAN

May 2004

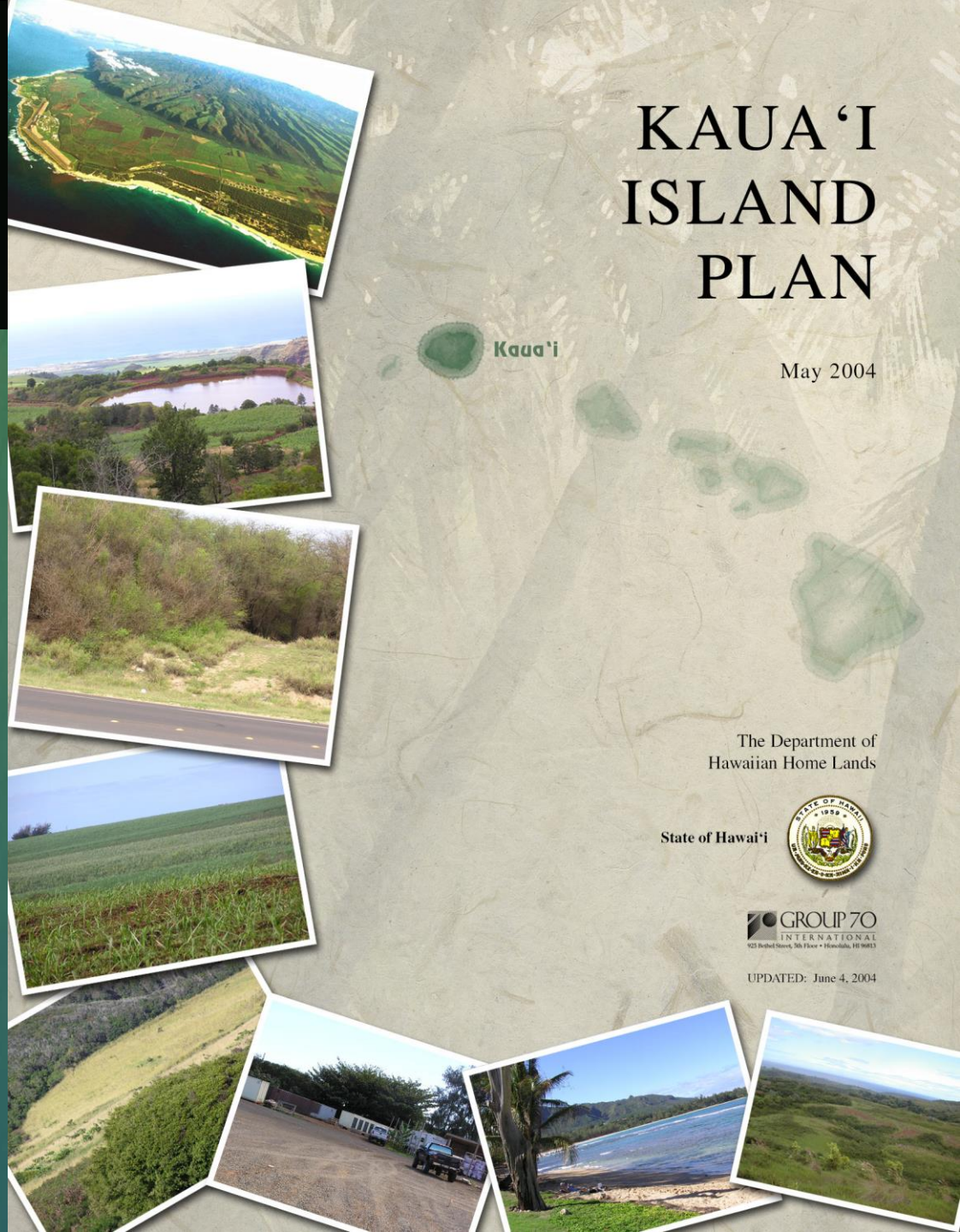
The Department of  
Hawaiian Home Lands

State of Hawai'i



**GROUP 70**  
INTERNATIONAL  
925 Bedford Street, 5th Floor • Honolulu, HI 96813

UPDATED: June 4, 2004





# WAILUA



## REGIONAL PLAN

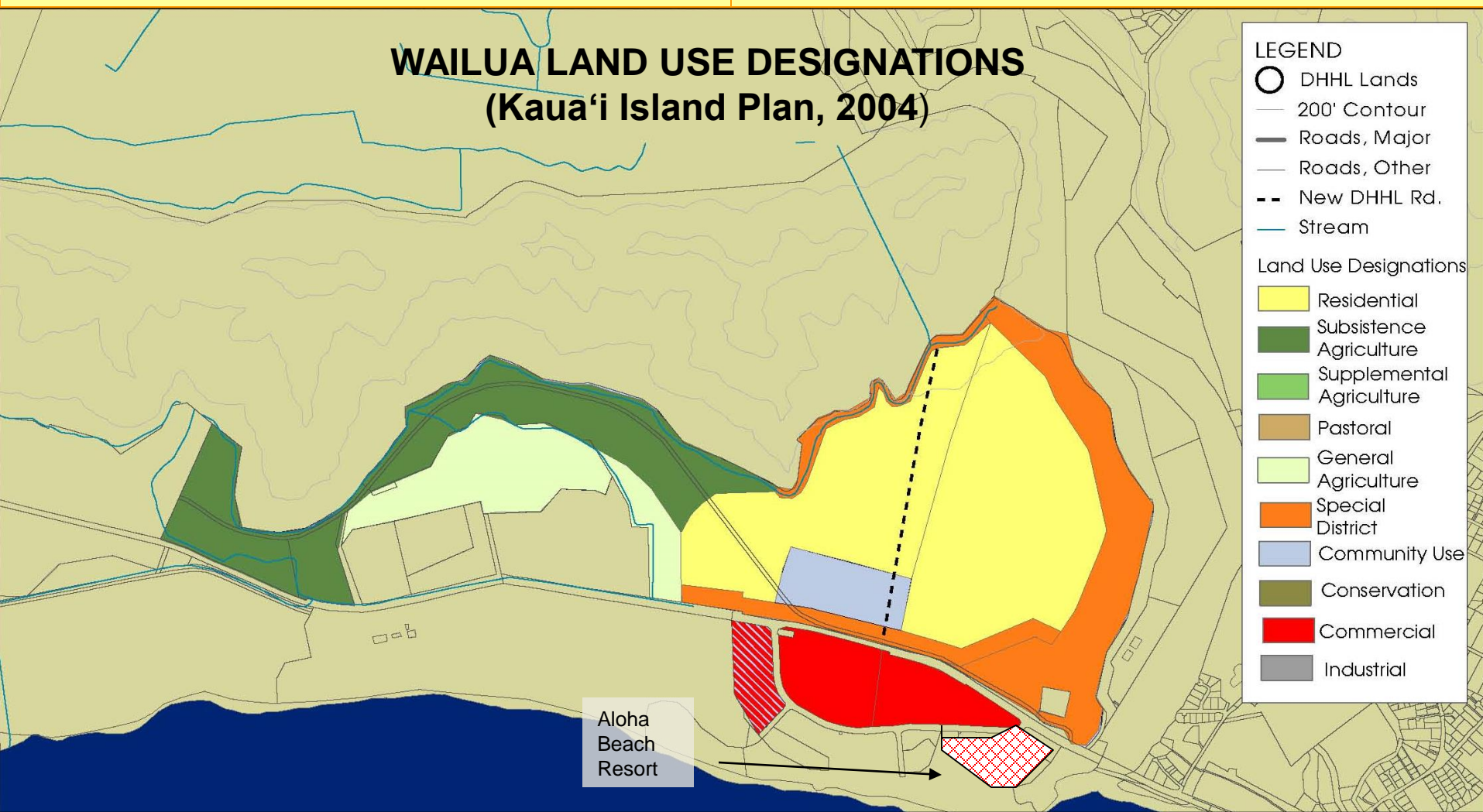
December 2009

- Originally Approved in June 2007
- Updated in Dec. 2009
- Land Area: 545 acres
- This is the Most Preferred Location for Residential Homesteading
- Development Focus: Secure Water Source

# DHHL Wailua Lands

- Wailua lands is approximately 545 acres (3% of Kaua'i lands)
- Aloha Beach Resort conveyed to DHHL –approximately 10 acres.

- All vacant land; wetland area
- Final EA for DHHL Wailua Well No. 1 completed





# ANAHOLA

KAMALOMALO'O, ANAHOLA, MOLOA'A



## REGIONAL PLAN

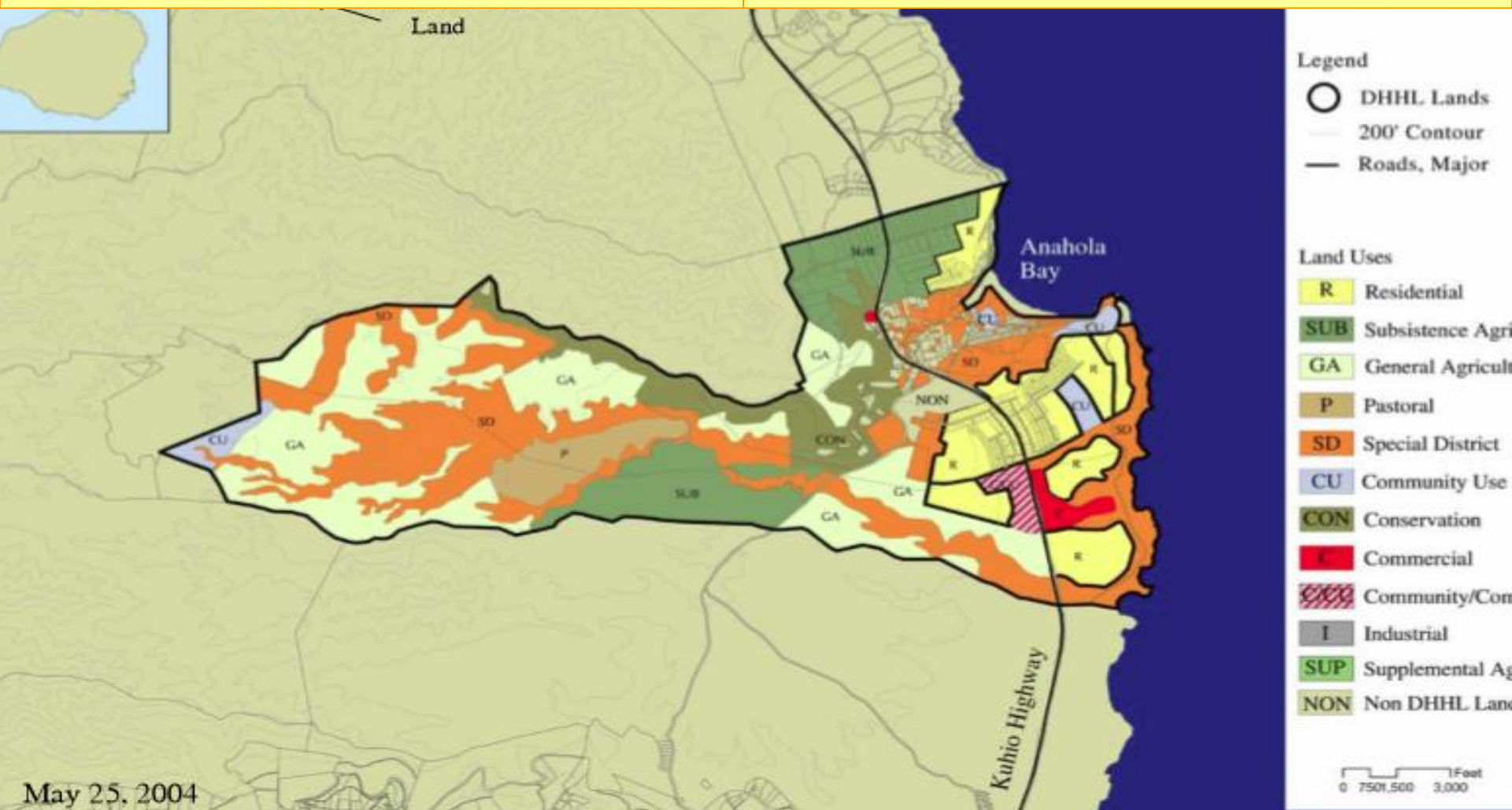
- Originally Approved in June 2007
- Updated in June 2010
- Land Area: 4,228 acres – Anahola; 316 acres – Moloa'a
- Anahola Town Center Plan
- Development Focus: Pi'ilani Mai Ke Kai

## DHHL Anahola Lands

- Approximately 4,500 acres (21% of Kaua'i lands)
- 267 Subsistence Agriculture

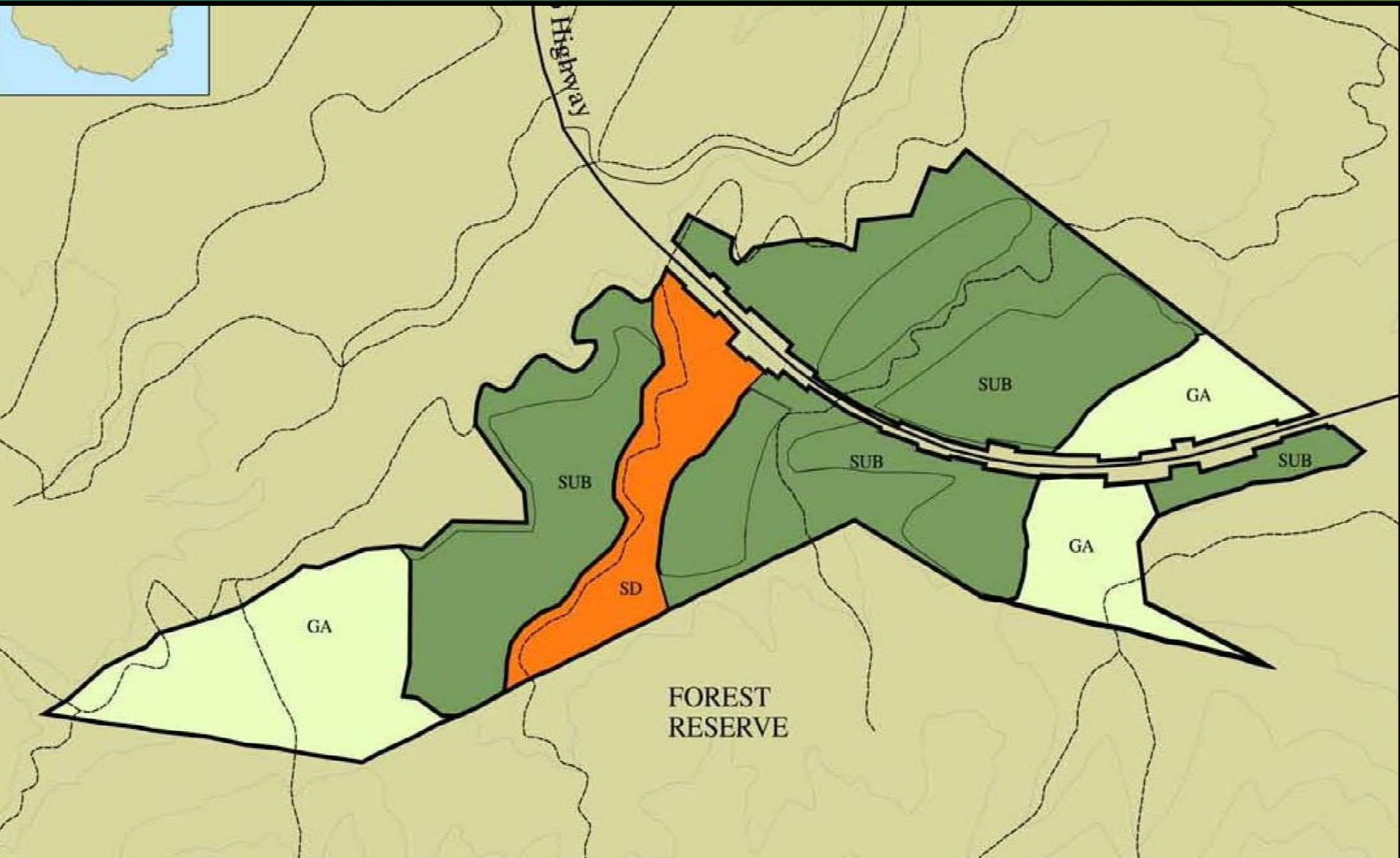
## Anahola Homesteads

- 535 Residential & 46 Agriculture Lessees
- 20 vacant lots offered in Pi'ilani Mai Ke Kai Phase 1 in January 2017
- 51 vacant lots in Phase 2





# Moloa'a Land Use Designations





# WEST KAUA'I

(Waimea, Kekaha, Hanapēpē)



## REGIONAL PLAN

February 2011

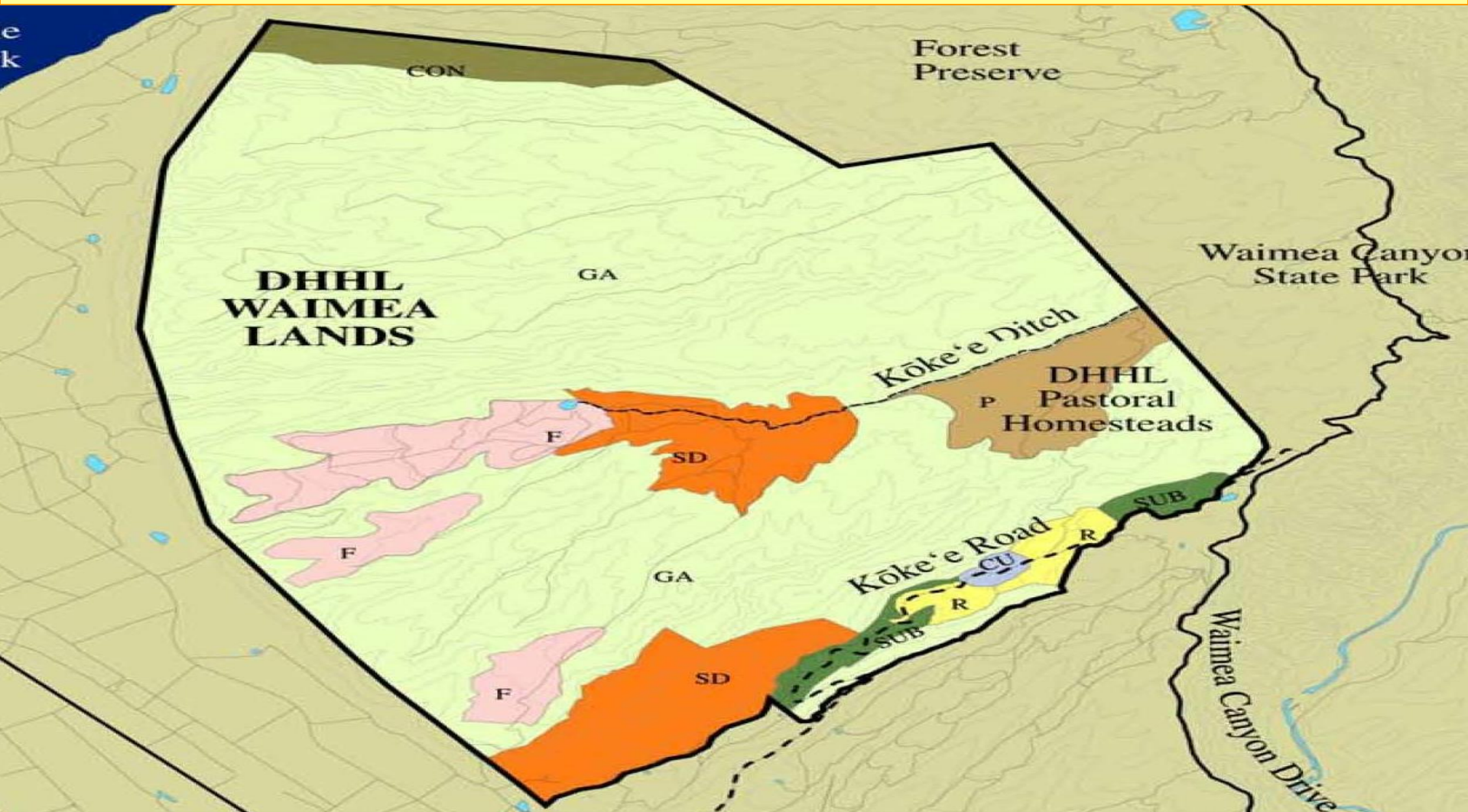


DEPARTMENT OF  
HAWAIIAN HOME LANDS

- Approved in June 2011
- Land Area: 15,061 acres – Waimea; 52 acres – Kekaha;  
365 acres – Hanapepe
- Development Focus: Ag, Water & Energy

# DHHL West Kaua'i Lands

- Approximately 15,478 acres  
(75% of Kaua'i lands)
- 1 Pastoral Lessee - Waimea
- DOFAW Game Management





# West Kaua'i Homesteads

- 117 Residential – Kekaha
- 46 Residential - Hanapepe





# Planning Projects

- Promulgating Administrative Rules for Planning System
- Starting Special Area Plan for DHHL Waimea Lands
- Improving Anahola Farm Lots Water System
- Managing Erosion Control of Aliomanu Road
- Awarded Agriculture Peer to Peer and Capacity Building Grants
- Kauai Island Utility Cooperative (KIUC) Waimea Hydro Electric Project
- Community Facility Dispositions



HAWAIIAN HOME LANDS  
HAWAIIAN HOMES COMMISSION  
DEPARTMENT OF HAWAIIAN HOME LANDS

# Homestead Community Update

# **Kauai**

## **Homestead Organizations**

- **Anahola Hawaiian Homestead Association**
- **Kalalea /Anehola Farmer's Hui**
- **Kekaha Hawaiian Homestead Association**
- **Piilani Mai Ke Kai Community Association**
- **West Kauai Hawaiian Beneficiary and Wait List Applicants Association**
- **West Kauai Hawaiian Homestead Association**
- **West Kauai Homestead Association**
- **West Kauai Homesteaders Association**





HAWAIIAN HOME LANDS  
HAWAIIAN HOMES COMMISSION  
DEPARTMENT OF HAWAIIAN HOME LANDS

# Open House