



HAWAIIAN HOME LANDS
HAWAIIAN HOMES COMMISSION
DEPARTMENT OF HAWAIIAN HOME LANDS

Maui Community Meeting

November 21, 2017
Kula Community Center



HAWAIIAN HOME LANDS
HAWAIIAN HOMES COMMISSION
DEPARTMENT OF HAWAIIAN HOME LANDS

Chairman's Update

2017 DHHL Legislation Update



- (HB451) Lower Blood Quantum to 1/32 for Successors
- Signed by Governor Ige on the Molokai, July 5, 2017
- Still needs Congressional Approval

Act 47, Session Laws of Hawaii, 2018

\$24M Capital Improvement Program Maui Appropriations

- **Keokea-Waiohuli Phase 2**
\$1,000,000 for Design and Construction
- **Keokea Offsite Water**
\$2,000,000 for Design and Construction
- **Kula Drainage and Roadway Safety**
\$1,200,000 for Design and Construction
- **Archaeological Preservation Improvements**
\$1,000,000 for Design and Construction
- **Pulehunui Sewage Treatment System Improvements**
\$17,500,000 for Plans, Design and Construction
- **Leialii Parkway and Highway Improvements**
\$1,400,000 for Design and Construction (FY19)

DHHL INITIATIVES

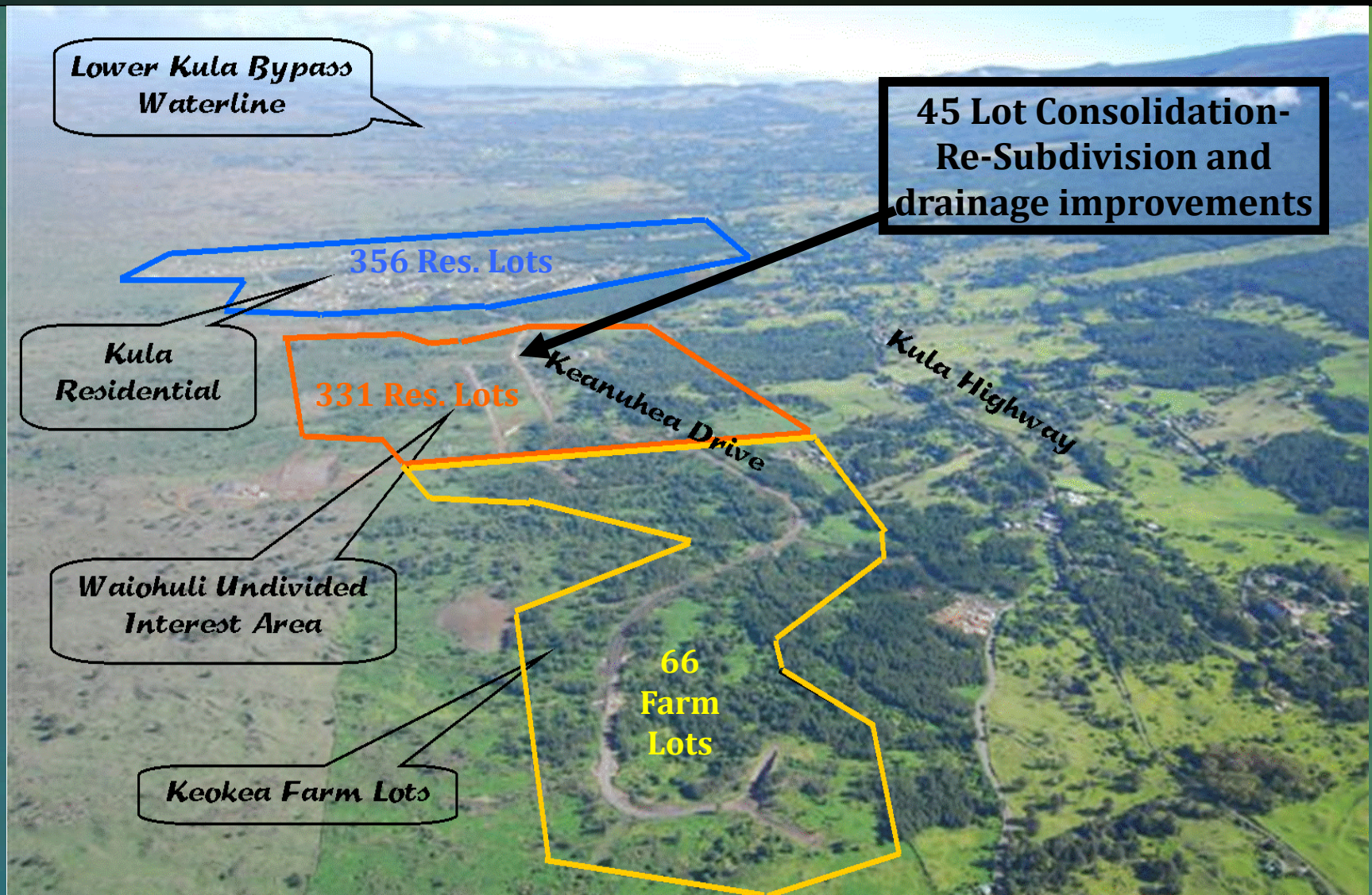
- **Subsistence Agricultural Program**
- **Accessory Dwelling Units**
- **Vacant Lot Awards**
- **Rent With Option To Purchase**



HAWAIIAN HOME LANDS
HAWAIIAN HOMES COMMISSION
DEPARTMENT OF HAWAIIAN HOME LANDS

Land Development Division Update

Kēōkea – Waiohuli Development





LIMITS OF 100-YEAR FLOOD

LIMITS OF 100-YEAR FLOOD

LIMITS OF 100-YEAR FLOOD

STREET

KEANUHEA

PAHILUKO

KEANUHEA

STREET

KAOPUUPUU

STREET

Tentative Construction Schedule

\$7,509,000 NAHASDA Funds encumbered

Invitation to Bid: November 2015

Notice to Proceed: May 2016

Construction Completion: April 2017

LEGEND:

- EXISTING PROPERTY LOT LINE
- PROPOSED PROPERTY LOT LINE
- 13,000 SF MIN.
- 20,000 SF MIN.

NUMBER OF LOTS:

13,000 SF MIN. LOTS - 33 LOTS
20,000 SF MIN. LOTS - 15 LOTS
TOTAL 48 LOTS

CONSOLIDATED AND RE-SUBDIVIDED LOT LAYOUT

SCALE: NTC

Community Planning and Engineering, Inc.
Highway Design | Development Management | Infrastructure Planning
2002 Kalia Road, Suite 100, Honolulu, HI 96811
Phone: (808) 944-1111

CONSOLIDATION / RE-SUBDIVISION
KEONEA-WAICHUKU DEVELOPMENT
PHASE 1A
KEONEA & WAICHUKU, HAWAII
HAWAIIAN ISLANDS, UNIVERSITY OF HONOLULU
TEL: (808) 944-1111 FAX: (808) 944-1112
WWW.CPEI.HI

EXHIBIT 2
CONSOLIDATED AND RE-SUBDIVIDED
LOT LAYOUT

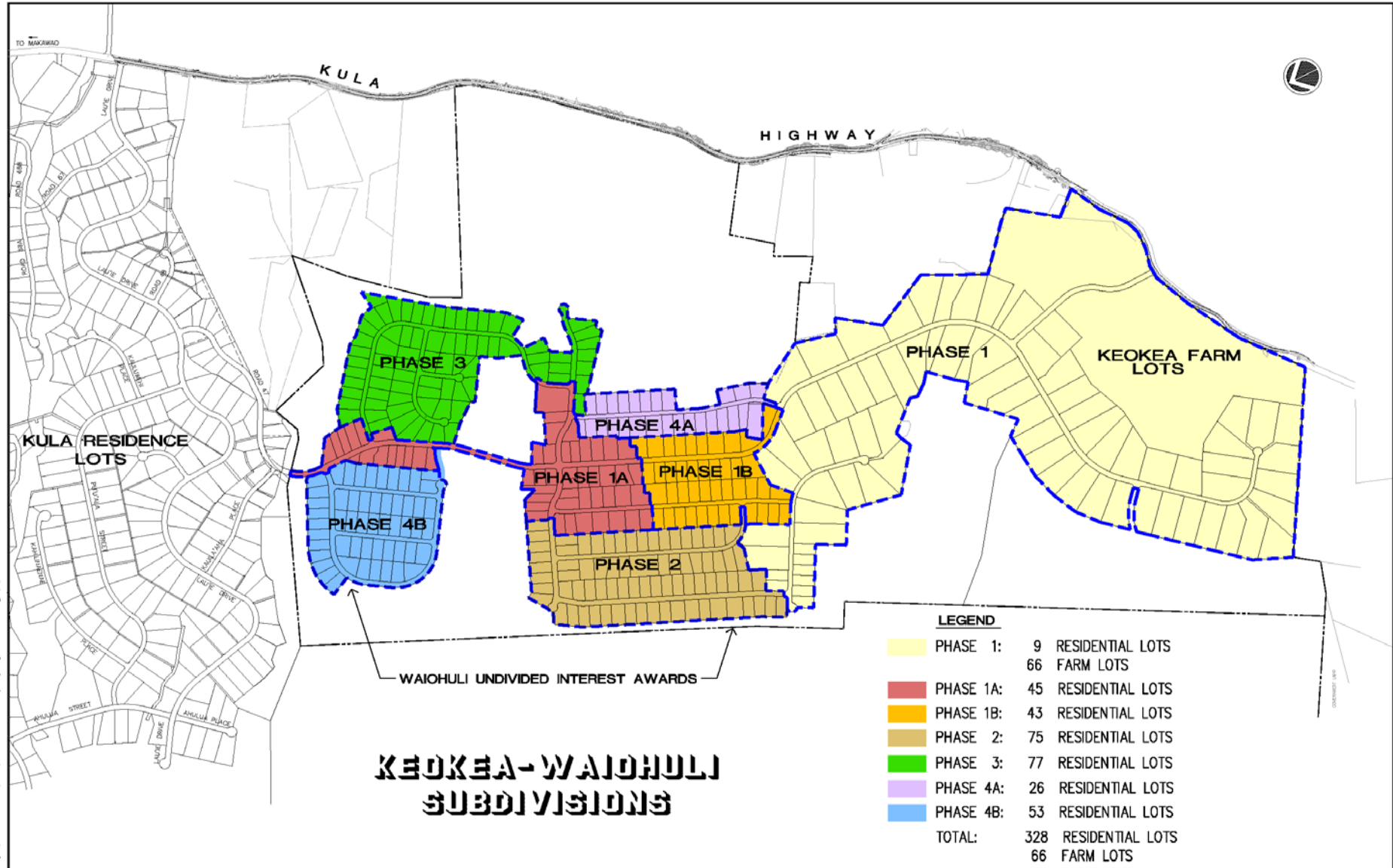
Kēōkea-Waiohuli Phase 1A

- **Consolidation and Re-subdivision of 45 lots with grading and drainage improvements**
- **HUD Environmental Review Record Concerns:**
 - **Archaeological Preservation and Monitoring**
 - **Endangered Species Protection**
 - **Drainage and Slope Mitigation**
- **Funded by \$7,509,000 NAHASDA appropriation**
- **44 lots selected by UI lessees in July 2017**

What's next?

Phase 1B: 43 Lots

Phase 2: 75 Lots

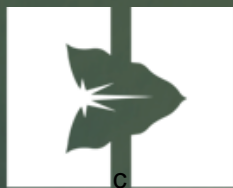




HAWAIIAN HOME LANDS

HAWAIIAN HOMES COMMISSION
DEPARTMENT OF HAWAIIAN HOME LANDS

Planning Office Update



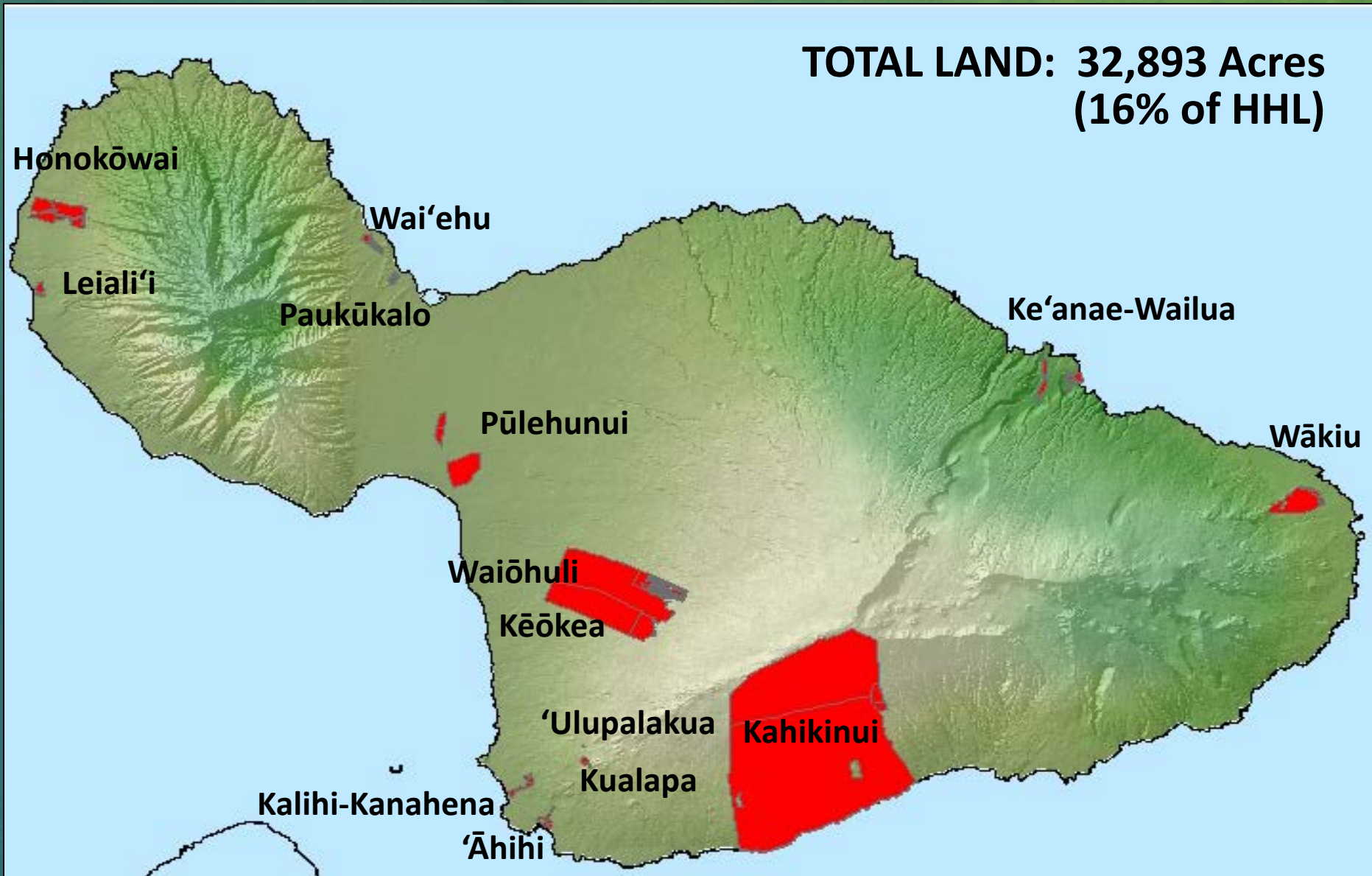
HAWAIIAN HOME LANDS
HAWAIIAN HOMES COMMISSION
DEPARTMENT OF HAWAIIAN HOME LANDS

Planning Office Update

- Trust Lands
- Island Plan and Regional Plans
- Beneficiaries

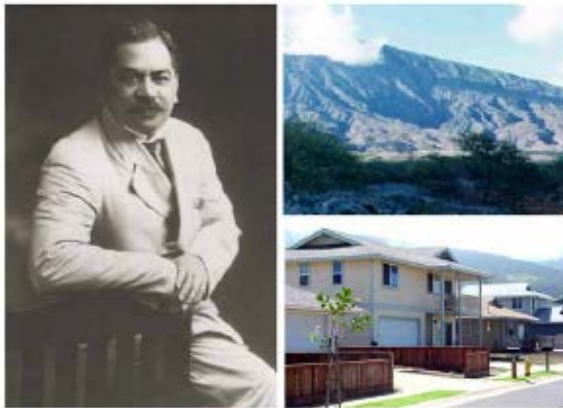
Maui na Hono A'o Pi'ilani

**TOTAL LAND: 32,893 Acres
(16% of HHL)**



Maui Island Plan

MAUI ISLAND PLAN



Prepared for:
The State of Hawai'i
Department of Hawaiian Home Lands

Prepared by:



September 2004

Land Use Designations	Acres	Percent
Subsistence AG	302	1%
Supplemental AG	28	0%
General AG	5,497	17%
Pastoral	775	2%
Residential	2,819	9%
Community Use	217	1%
Commercial	122	0%
Industrial	218	1%
Conservation	7,831	24%
Special District	15,585	49%
TOTAL ACRES	32,000	100%

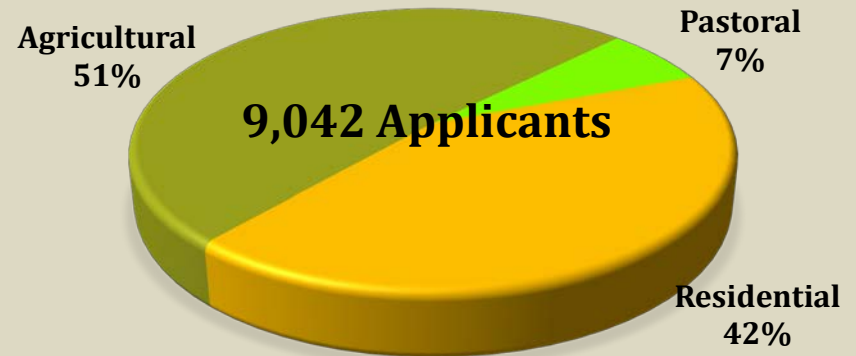
Native Hawaiian Beneficiaries

Applicants

44,567 Statewide

9,042 Maui (20%)

MAUI APPLICANTS

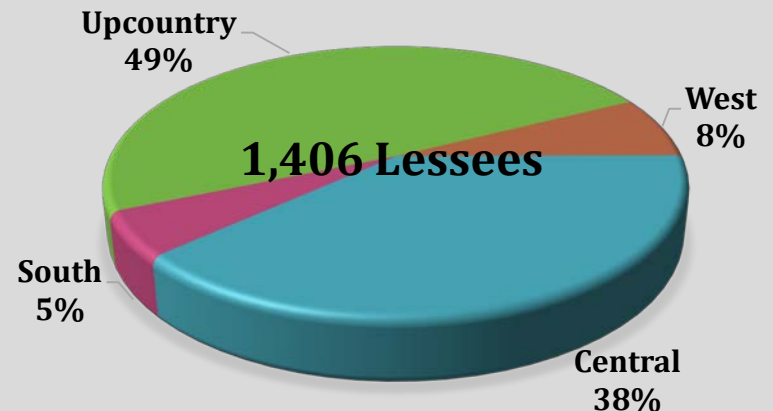


Lessees

9,883 Statewide

1,406 Maui (14%)

MAUI LESSEES



KĒŌKEA-WAIOHULI

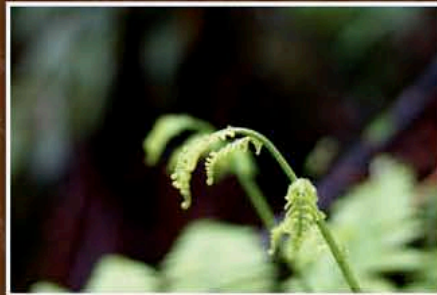
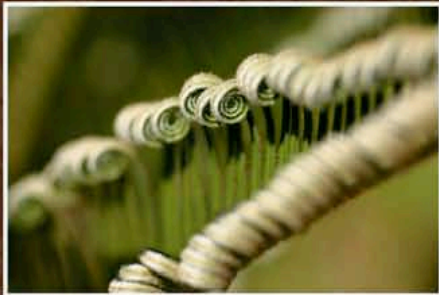


JUNE 2010

DEPARTMENT OF HAWAIIAN HOME LANDS



KAHIKINUI



REGIONAL PLAN

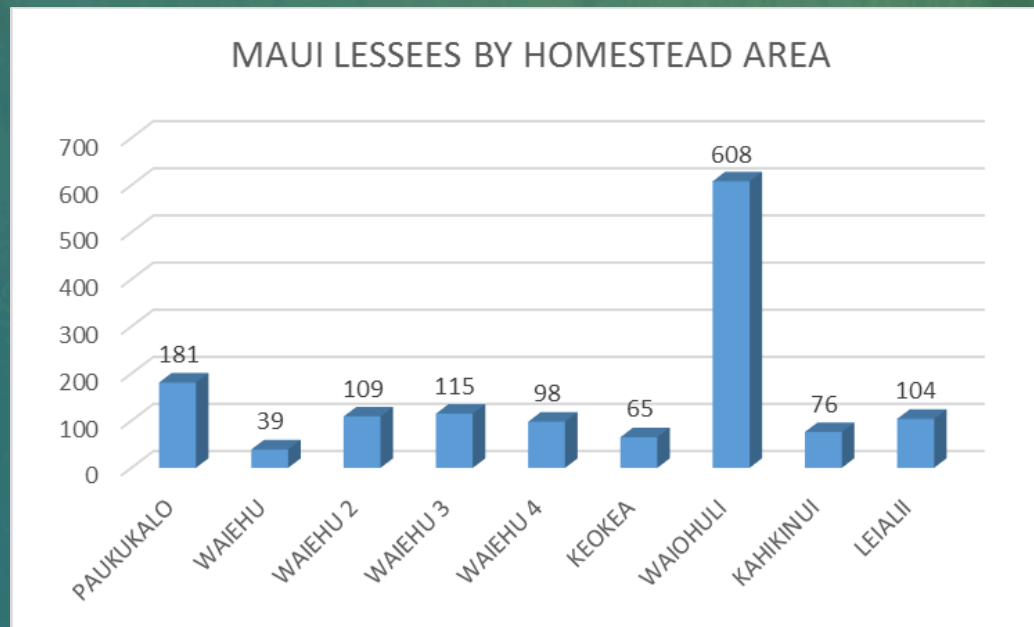
July 2011



DEPARTMENT OF
HAWAIIAN HOME LANDS

Homestead Associations

- 6 Homestead Associations, governed by a Board of Directors, elected by their members—representative body
- Communicate resident concerns/issues to DHHL
- Communicate DHHL initiatives to the community
- They produce events and develop projects that strengthen their community
- Quality of Life, Sense of Community, Community Values





HAWAIIAN HOME LANDS
HAWAIIAN HOMES COMMISSION
DEPARTMENT OF HAWAIIAN HOME LANDS

Homestead Community Update

Maui

Homestead Organizations

- **'Ahahui 'Aina Ho'opulapula o Waiohuli**
- **Ka 'Ohana O Kahikinui, Inc.**
- **Keokea Homestead Farm Lots Association**
- **Paukukalo Hawaiian Homes Community Assoc., Inc.**
- **Villages of Leiali'i Phase 1-A Association**
- **Waiehu Kou Community Homestead Association**
- **Waiehu Kou Residence Lots Phase II Association Inc.**
- **Waiehu Kou Phase 3 Association Inc.**
- **Waiohuli Hawaiian Homesteaders Association, Inc.**



HAWAIIAN HOME LANDS
HAWAIIAN HOMES COMMISSION
DEPARTMENT OF HAWAIIAN HOME LANDS

Open House