

HAWAIIAN HOME LANDS

HAWAIIAN HOMES COMMISSION
DEPARTMENT OF HAWAIIAN HOME LANDS

DHHL – County of Maui DWS West Maui Water Intergovernmental Agreement

Beneficiary Consultation Meeting

July 23, 2018

6:00 p.m. – 8:00 p.m.

Lahaina, Maui

Presentation Outline

- Pule & Introductions
- Purpose of Meeting
- Beneficiary Consultation Process Overview
- Presentation on Proposed Intergovernmental Agreement
- Discussion and Q&A
- Closing & Next Steps

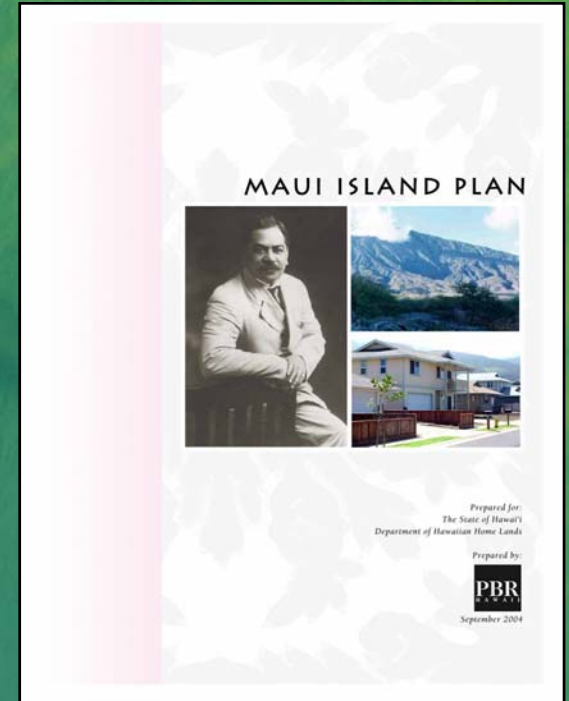
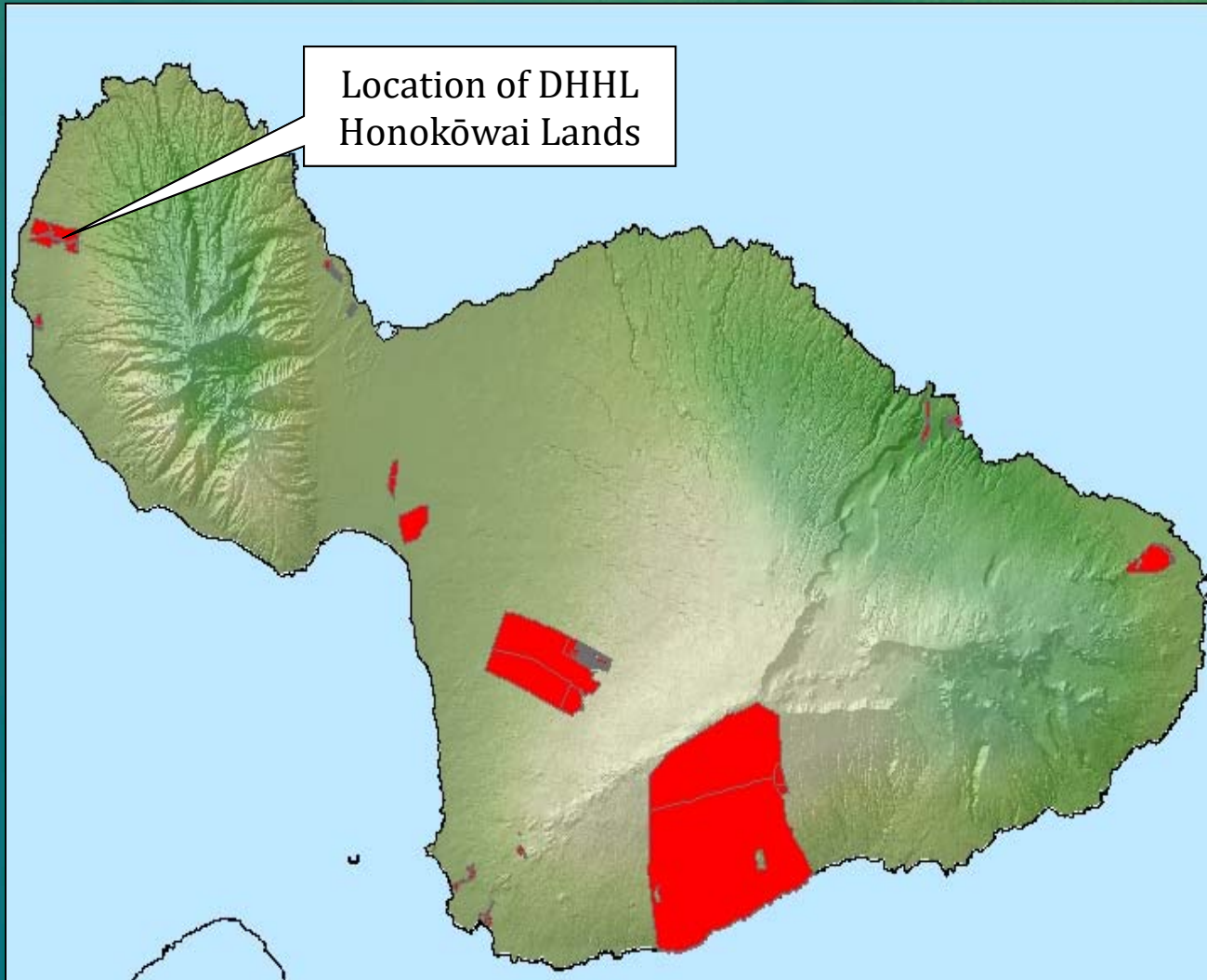
Purpose of Meeting

- Share information regarding the proposed intergovernmental agreement with the County of Maui, Department of Water Supply (DWS) as well as on DWS' proposed water system improvements in West Maui.
- Consult with DHHL Beneficiaries regarding proposed agreement for a license to DWS in exchange for a water allocation for the Department of Hawaiian Home Lands (DHHL).
- Obtain comments from Beneficiaries on proposed agreement.

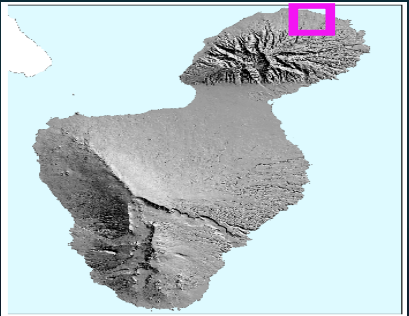
Beneficiary Consultation Process

- HHC Policy of Consulting with Beneficiaries for:
 - Land use projects, long term licenses/leases
- Consultation Meeting
 - What's being proposed?
 - Will the use provide benefits for Beneficiaries?
 - Record Beneficiary input
- One-Month Consultation Period
 - Beneficiaries provide written comments (via mail or email)
- Beneficiary Consultation Report to HHC
 - Summarize main points and provide full record of comments for use in decision making

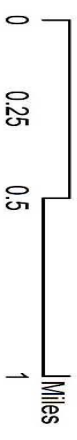
Maui Island Lands

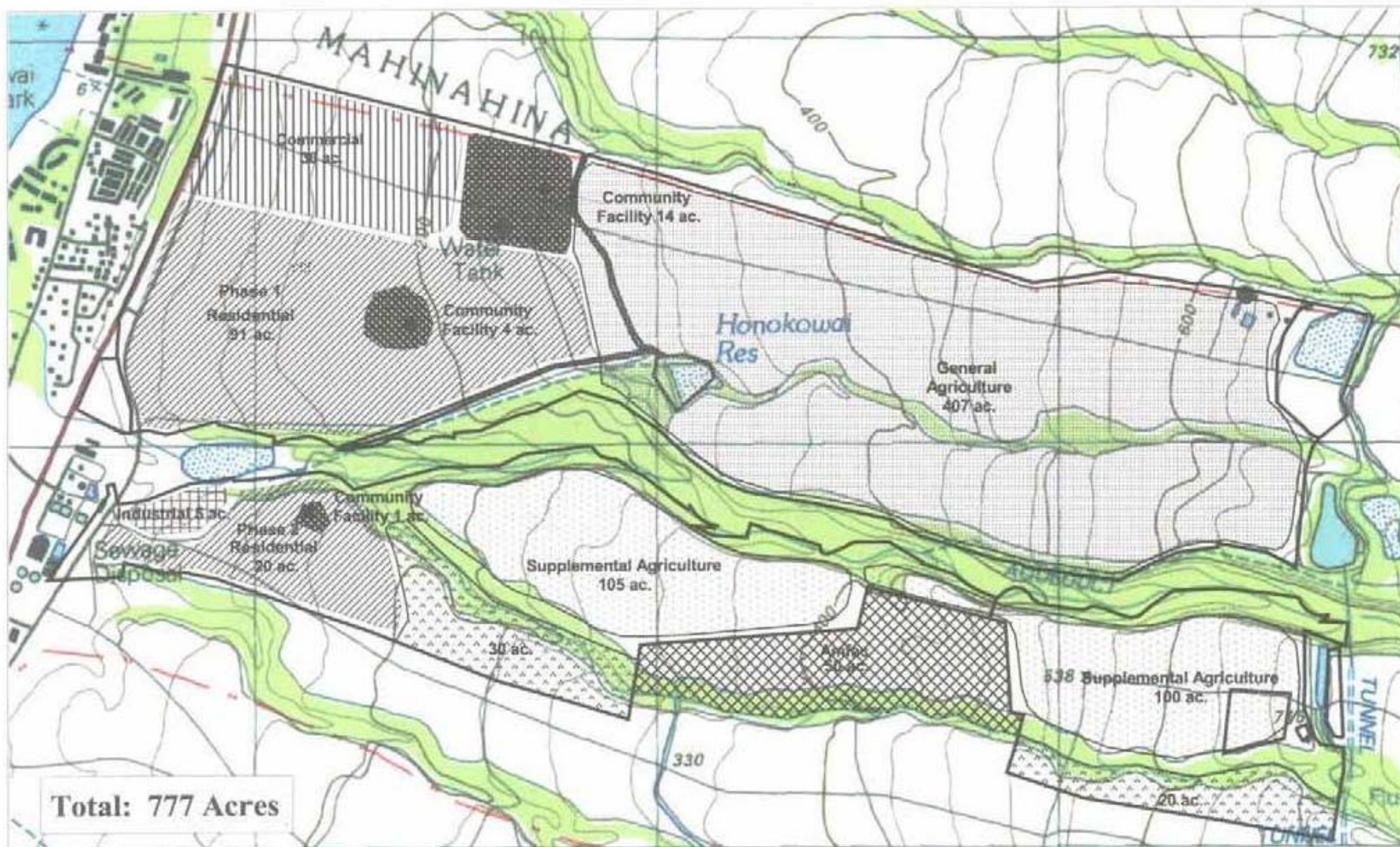


~31,904 acres
(16% of Trust
Land)



DHL Honokowai Lands





Legend

- DHHL Land Boundary
- Proposed Land Exchange Kaanapali Development Corporation
- DHHL

Land Use Summary

Land Use	Lot Size	Number of Lots	Approx. Acres
Residential (ph.1)	10,000 sf	337	91
Residential (ph.2)	10,000 sf	74	20
General Agriculture			407
Community Use			19
Industrial			5
Commercial Use			30
Supplemental Agriculture 5 ac		15	205
Total		426	777

Figure 1
HONOKŌWAI
Land Use Plan

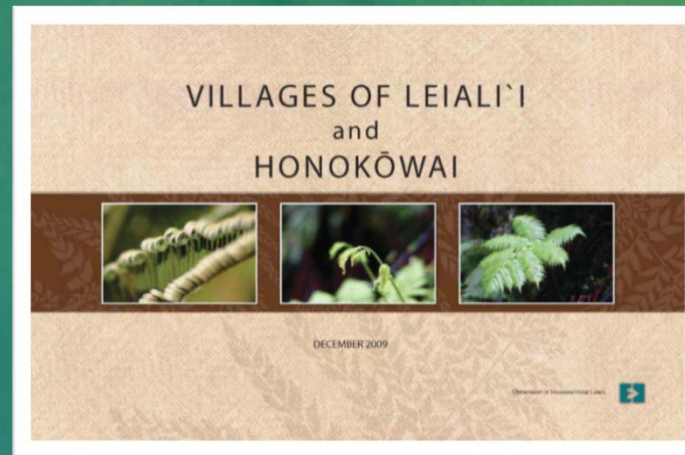
MAUI LAND INVENTORY

DEPARTMENT OF HAWAIIAN HOMELANDS



9/9/04

Villages of Leiali'i and Honokōwai Regional Plan (2009)



- Priority Project: Water Source Development
 - DHHL is in the planning process for the development of a new Honokōwai well.
- Priority Project: Preliminary Review of Honokōwai Lands
 - DHHL will be starting the master planning process for the Honokōwai lands in 2018.

Water Policy Plan (2014)

HAWAIIAN HOMES COMMISSION WATER POLICY PLAN

July 22, 2014

Vision

Our vision is that there will be adequate amounts of water and supporting infrastructure so that homestead lands will always be usable and accessible, to enable us to return to our lands to fully support our self-sufficiency and self-determination in the administration of the Hawaiian Homes Commission Act (HHCA), and the preservation of our values, traditions, and culture.

Mission

In a manner consistent with our values, the Hawaiian Homes Commission (HHC) and Department of Hawaiian Home Lands (DHHL) shall strive to ensure the availability of adequate, quality water by working cooperatively to:

- Understand our trust water assets;
- Plan for our water needs;
- Aggressively understand, exercise and assert our kuleana as stewards of water;
- Develop and protect water sources; and
- Manage water systems.

Values

1. **Waiwai:** *Mōhala i ka wai ka maka o ka pua. Unfolded by the water are the faces of the flowers. The availability of water to our lands and people is integral to the trust and our mission.*
2. **Waihona:** *Ua lehu'ehua a manomano ka 'ikena a ka Hawai'i. Great and numerous is the knowledge of the Hawaiians. Honoring and documenting our knowledge about water is essential to managing it.*
3. **Mālama:** *He ali'i ka 'āina; he kauwā ke kanaka. The land is a chief; man is its servant. We consider water to be part of our genealogy and so we manage it in a manner that cares for its long-term sustainability for all things, as we also use it productively for our mission.*
4. **Laulima:** *E lauhoe mai nā wa'a; i ke kā, i ka hōe; i ka hōe, i ke kā; pae aku i ka 'āina. Everybody paddle the canoes together; bail and paddle, paddle and bail, and the shore is reached. We are one people who now share Hawai'i with others. DHHL is only one of many Hawaiian serving institutions. We will assert our rights while considering our larger lāhui 'ōiwi and the larger world in which we live.*

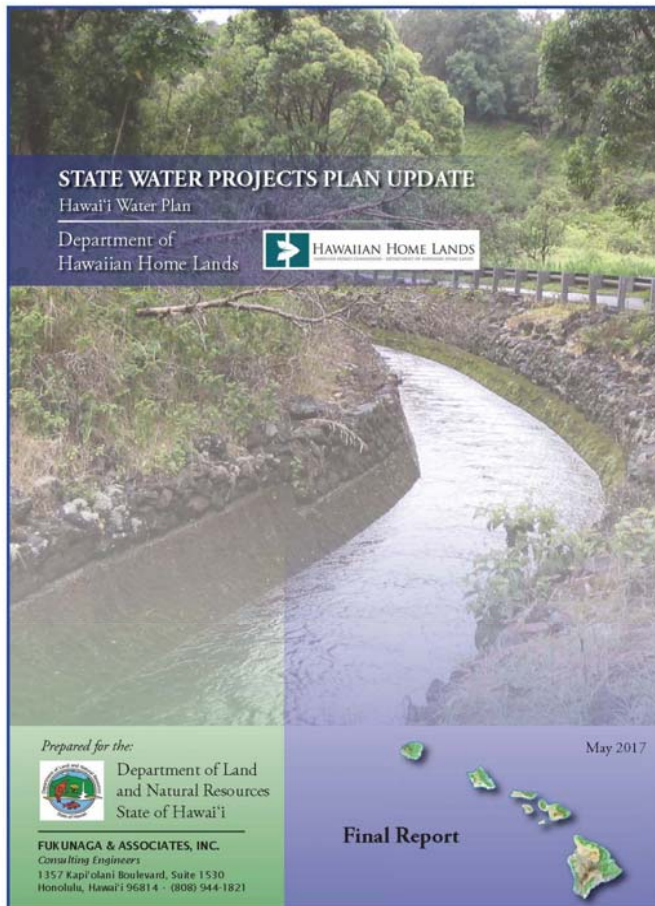
- Adopted by Hawaiian Homes Commission (HHC) on July 22, 2014
- Aimed at the pono use and management of water for the benefit of Beneficiaries
- Plan values include laulima, or cooperation amongst other institutions in asserting the rights of Beneficiaries.

Water Policy Plan (2014)

- Relevant Policies:

- Expressly determine and **plan for future** water needs and actively participate in broader water management, use and protection efforts in Hawai'i in order to secure water.
- Aggressively exercise, reclaim, and protect Hawaiian home land water **kuleana**.
- Affirmatively **communicate** our decisions, our reasoning, and our performance in managing, stewarding, and using water before and after making major water decisions.
- **Educate** beneficiaries, the DHHL, HHC, and other stakeholders continually on our water kuleana.
- Foster **self-sufficiency** of beneficiaries by promoting the adequate supply of water for homesteading when developing or managing water.
- Explicitly consider **water availability and the costs** to provide adequate water when developing new homestead areas, designating land uses, issuing land dispositions, or exchanging properties.

State Water Projects Plan



- Adopted by Commission on Water Resource Management in May 2017
- Identifies DHHL water needs over the next 20 years
- Calculates potable and non-potable water demands based on DHHL plans

State Water Projects Plan

- Honokōwai and Leiali‘i I-B potable water demands:

Area	Long-Term Demand
Honokōwai	617,900 GPD
Leiali ‘i I-B	151,700 GPD
TOTAL POTABLE:	769,600 GPD
Non-Potable:	2,080,800 GPD

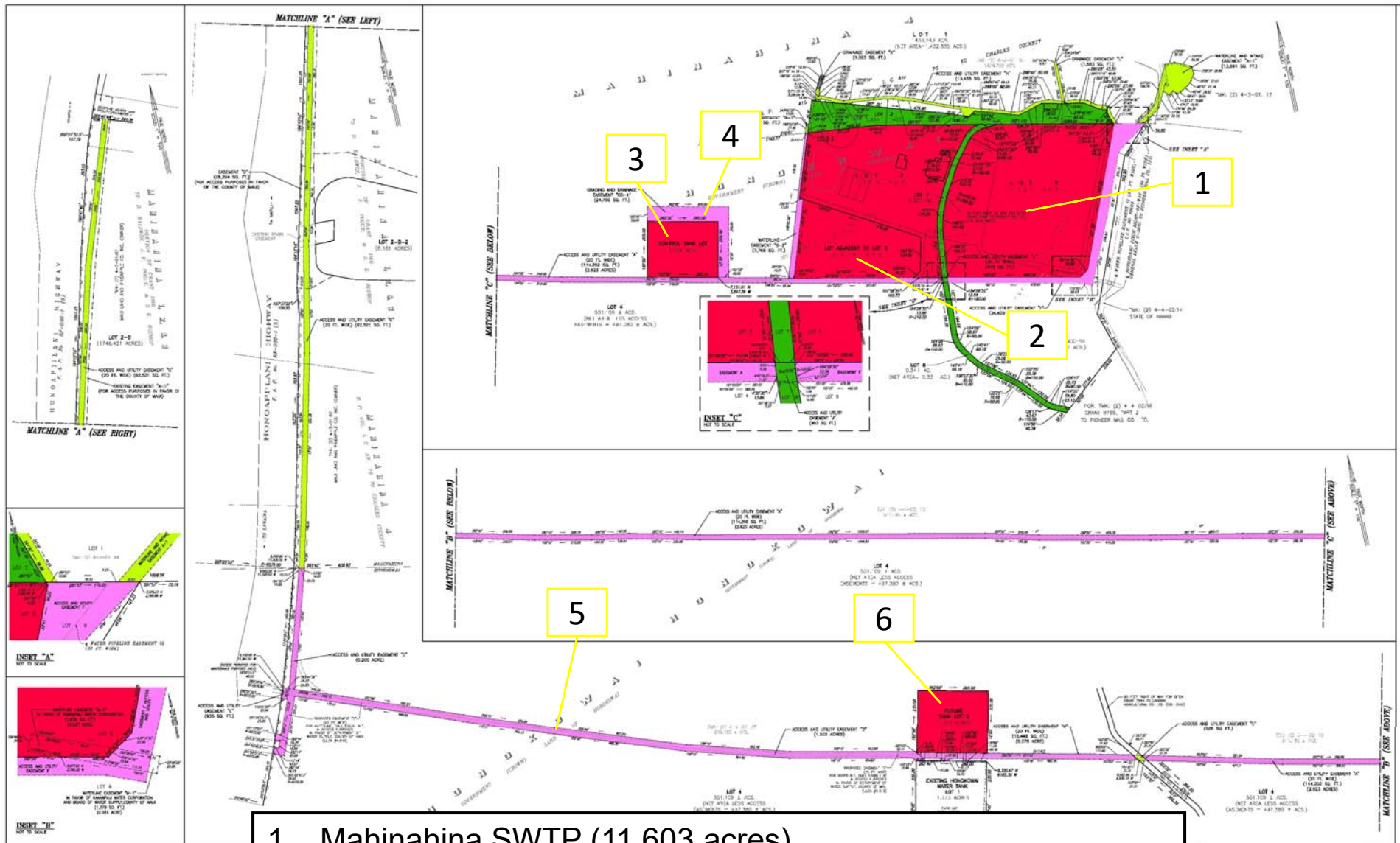
- Proposed to be provided by DWS system
- Projected in the long-term (2026 and beyond) based on available plans (e.g. 2004 Maui Island Plan)

Summary of Proposed Intergovernmental Agreement

- DWS requests from DHHL a **perpetual land use license** for the following:
 1. Continued operation of the existing Mahinahina Surface Water Treatment Plant (11.603 acres)
 2. Future expansion of Mahinahina Surface Water Treatment Plant (2.316 acres)
 3. Proposed 500,000-gallon control tank site to serve the proposed DWS wells and DHHL Honokōwai Well (1.224 acres)
 4. Proposed grading and drainage easement for proposed 500,000-gallon control tank (0.567 acre)
 5. Access and utility easement (5.488 acres)
 6. Future 2-million gallon Honokōwai tank (1.373 acres)
- Total acreage request: **22.571 acres**
- DHHL requests from DWS **200,000 gallons per day** water allocation

Summary of Proposed Intergovernmental Agreement

- DWS previously offered DHHL payment for land license based on appraised land value
- HHC in September 2017 asked DWS to work with DHHL to see if water could be provided in exchange for a land license in lieu of monetary payment
- Through negotiations with DWS, a 200,000 GPD allocation is still within existing available capacity of the Mahinahina SWTP and would not create significant impacts
- Average SF water usage is 600 GPD per unit. 200,000 GPD could support approximately 330 units.



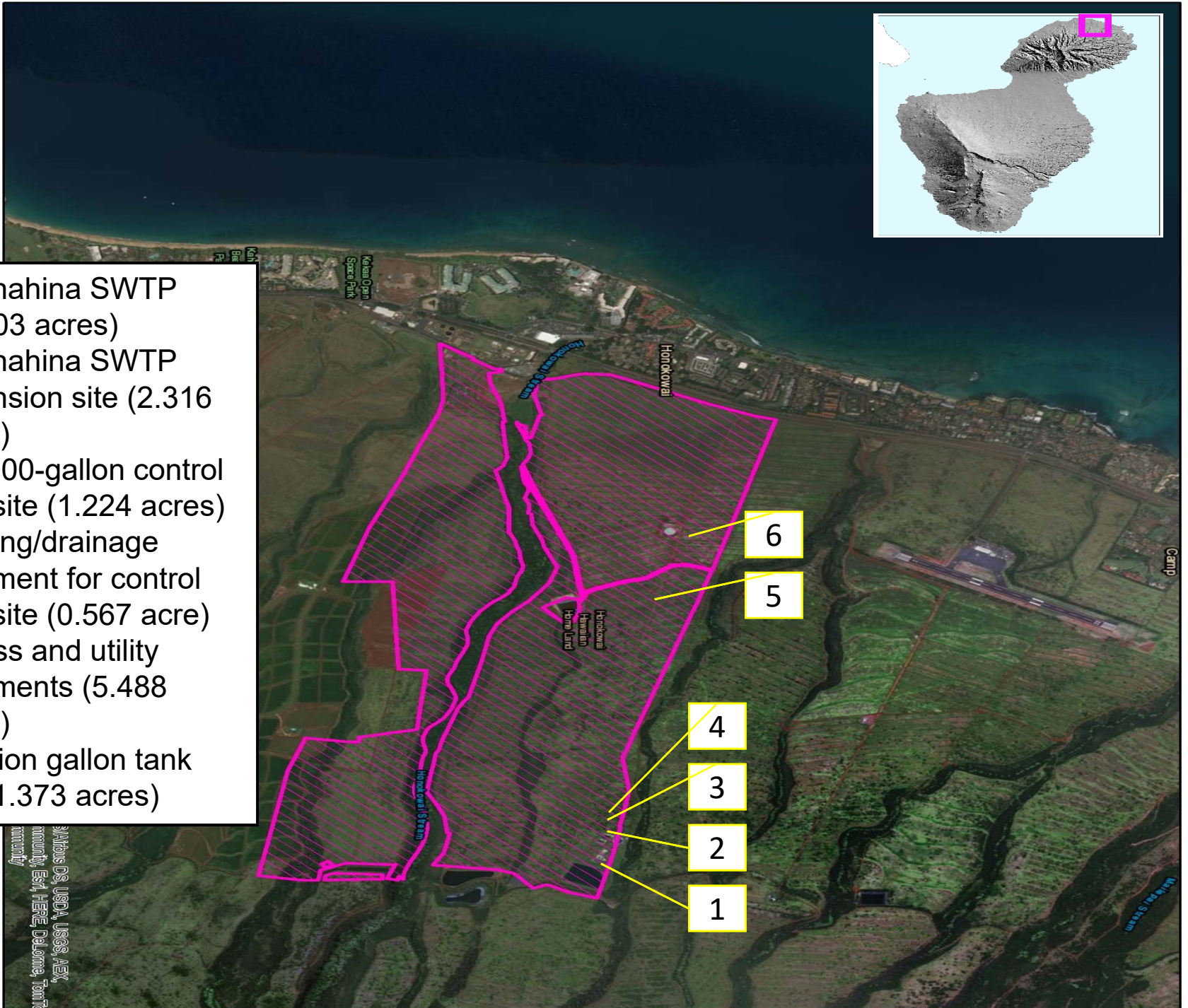


DHHL Honokowai Lands

1. Mahinahina SWTP (11.603 acres)
2. Mahinahina SWTP expansion site (2.316 acres)
3. 500,000-gallon control tank site (1.224 acres)
4. Grading/drainage easement for control tank site (0.567 acre)
5. Access and utility easements (5.488 acres)
6. 2-million gallon tank site (1.373 acres)

0.5
1
Mile

MAJORS D3, USGA, USGS, AEX,
community, Est, HERE, Delorme, TomTom



Benefits

- Expedites getting water for Hawaiian home lands
- Provides water to Hawaiian home lands
 - 200,000 GPD will help meet some of the total West Maui water demands (769,600 GPD as specified in the SWPP); enough for build-out of Leiali'i I-B
 - Honokōwai Well will help meet remaining water demands
- Alternative compensation to the Trust
- Opportunity to partner with County of Maui
- System improvements will also serve DHHL's planned Honokōwai well

Discussion Kuleana

- Maintain an open and positive attitude
- Cell phones off or on silent
- Everyone gets a turn to speak
- Listen to understand
- Disagreement is okay as long as we are respectful of each other

Discussion and Q&A

1. What are your thoughts on the DHHL's proposed intergovernmental agreement with the DWS for a water allocation in West Maui in exchange for a land license? Are there any alternatives that DHHL should consider?
2. What are your thoughts on the perpetual term of the license request?
3. What other partnership opportunities are there for the DHHL and beneficiaries in this region related to water?

Closing and Next Steps

- 30-day Comment Period Ends – August 22, 2018
- Beneficiary Consultation Report to HHC – September 17-18, 2018 (Hilo, Hawai‘i)
- HHC Consideration of Proposed Agreement – October 15-16, 2018 (Paukūkalo, Hawai‘i)

DHHL Contact Information

Send Written Comments to DHHL Planning Office:

Department of Hawaiian Home Lands
Attention: Planning Office
P.O. Box 1879
Honolulu, HI 96805
DHHL.Planning@Hawaii.gov

Questions? Please Contact:

Bryan Esmeralda (DHHL Planning Office)
Bryan.K.Esmeralda@Hawaii.gov
(808) 760-5125 / (808) 265-2382