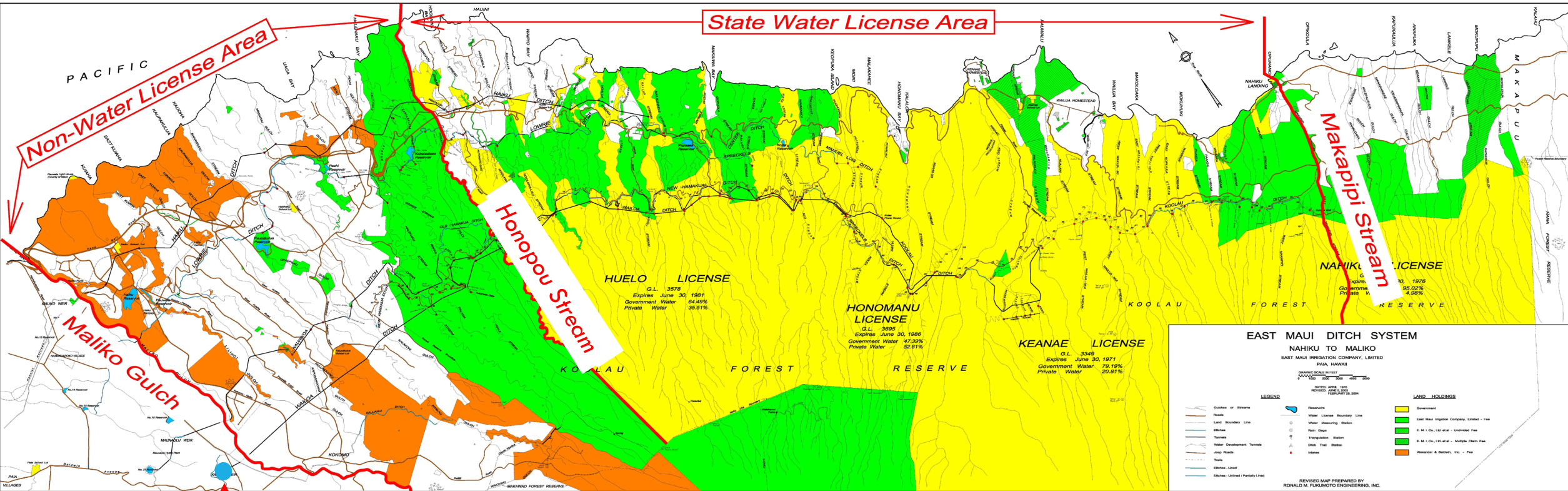




STATE WATER LEASE: EAST MAUI

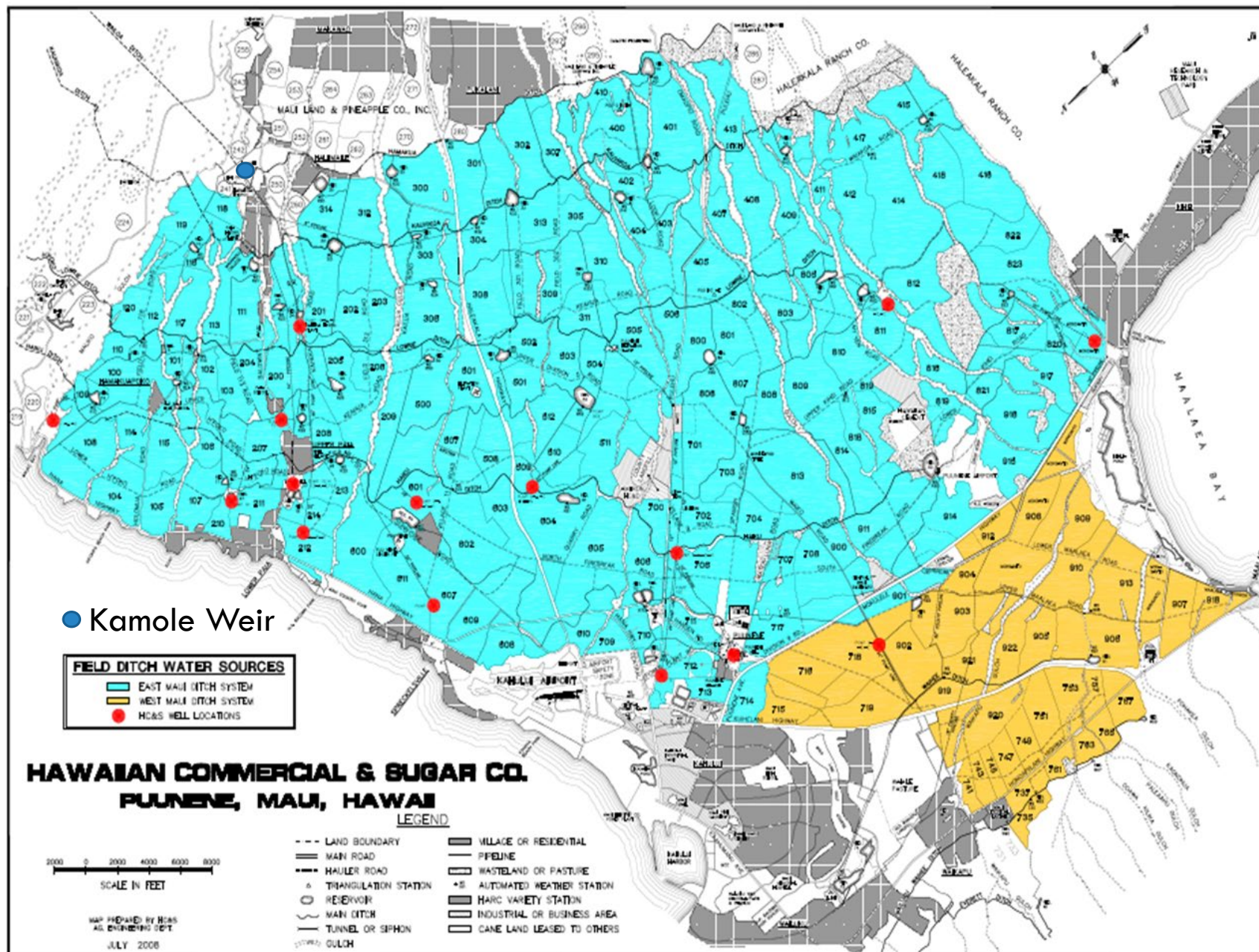
DHHL Beneficiary Consultation Meeting
January 14, 2019





Kamole Weir





EMI DITCH SYSTEM SERVICE AREA

- Fields in Central Maui
- Upcountry Maui DWS & Ag Parks
- Nahiku











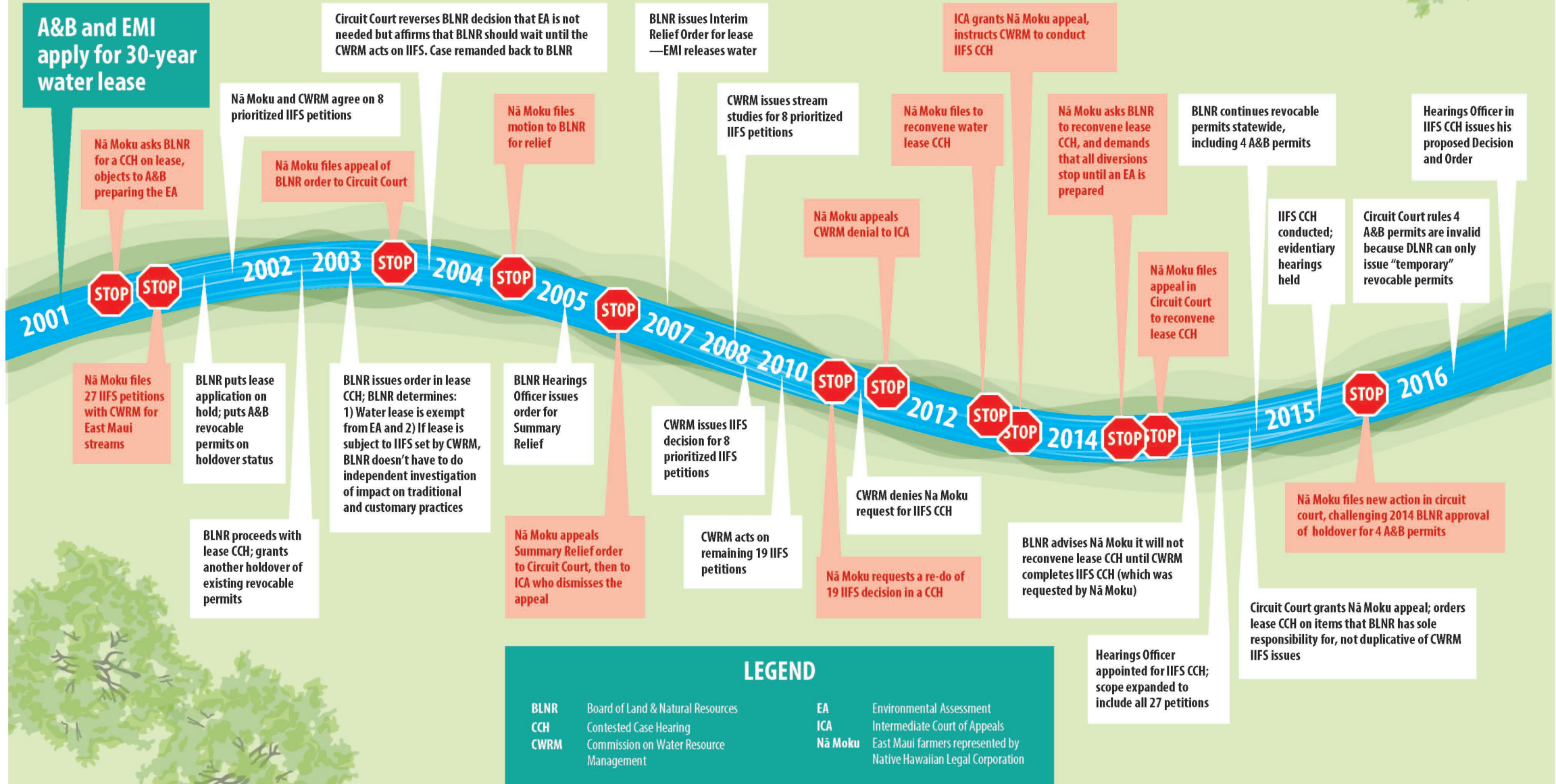








EAST MAUI STREAM PROCEEDINGS TIMELINE



Environmental Impact Statement Preparation Notice



February 2017

Prepared For



Alexander & Baldwin, Inc.

East Maui Irrigation Company, Ltd.

Prepared By



Wilson Okamoto Corporation

1907 South Beretania Street, Suite
400 Honolulu, Hawaii 96816



ALEXANDER & BALDWIN

PARTNERS FOR HAWAII





MAHI PONO

A Maui Farming Company





WHO WE ARE

COMMITTED TO SUSTAINABLE AGRICULTURE ON MAUI



It starts with our name, Mahi Pono. We will farm properly, carefully and correctly.

- Stewards of 41,000 acres of prime agricultural land
- Committed to food security and self-sufficiency
- Dedicated to sustainable agriculture
- Prioritizing conservation and natural resource management



OUR VISION

MAHI PONO FARMS IS FOCUSED ON AGRICULTURE AND RELATED USES.

We are farmers, not developers.

- Solicit input from the community and interested stakeholders
- *Grow organic and non-GMO crops*
- Focus on producing high-quality foodstuffs for local consumption and with export potential
- Promote sustainability through the use of conservation practices such as silvopastoral systems, agroforestry and soil remediation
- Make initial investments and commitments to Maui farmers





BUILDING RELATIONSHIPS WITH THE COMMUNITY

OUR SUCCESS WILL BE DEPENDENT ON YOUR SUPPORT.

- Engage the Native Hawaiian community to learn about traditional Hawaiian farming practices
- Create meaningful partnerships with Maui farmers and lend our expertise, resources, equipment, development and farming capital to improve the viability of sustainable agriculture on Maui
- Invest in Maui farmers and their future by providing education and business courses
- Support community initiatives that promote sustainability like the 'Aina Pono Hawai'i State Farm to School program that was initiated by Former Lt. Governor Shan Tsutsui



MANAGING WATER THE PONO WAY

COMMITTED TO PRESERVING AND PROTECTING HAWAI'I'S PUBLIC TRUST RESOURCES



1.

**Use only what
we need**

2.

**Share with
others**

3.

**Preserve for future
generations**



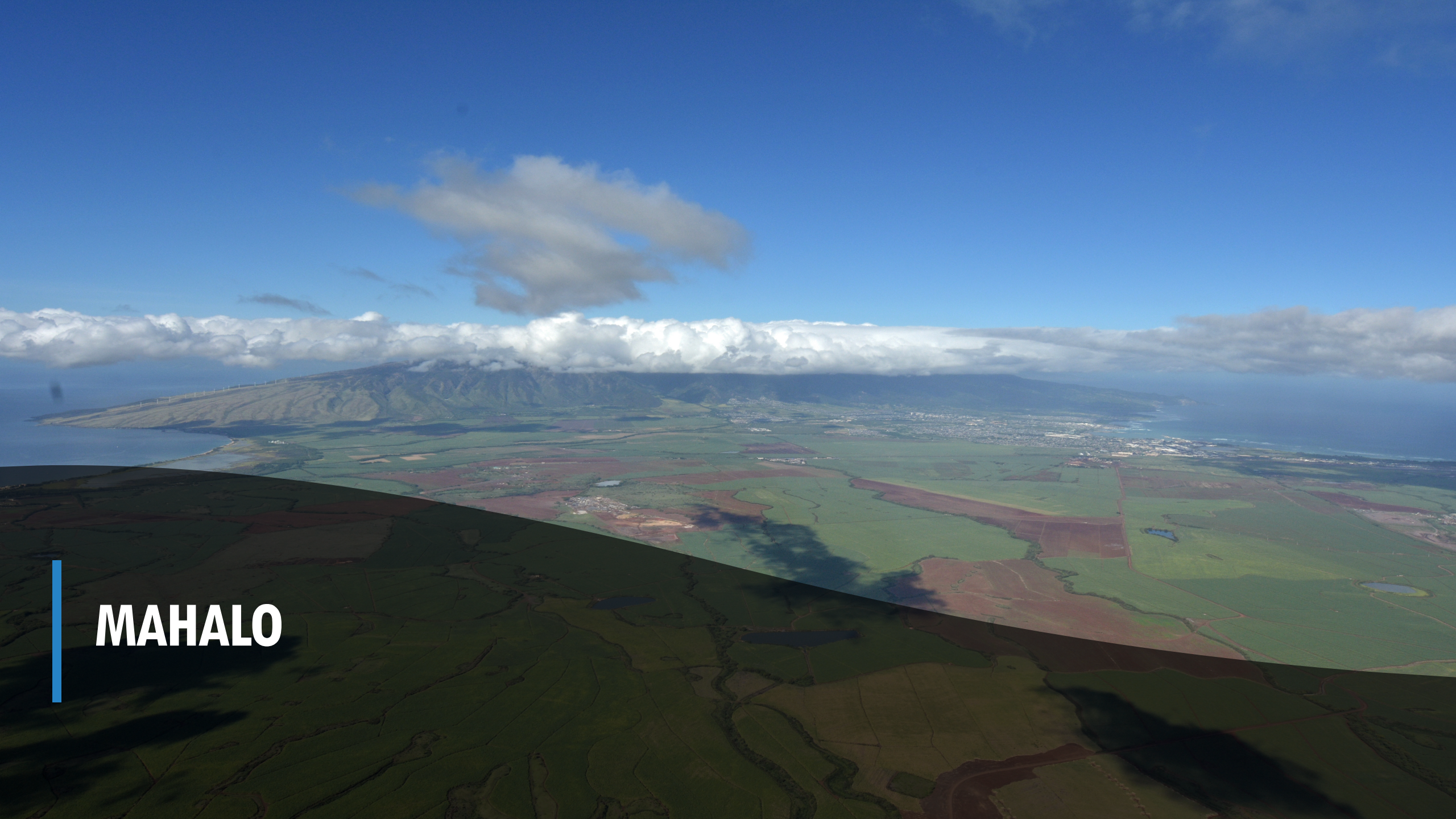
NEXT STEPS

ASSEMBLING THE MAHI PONO TEAM

Hiring a local team that is passionate about agriculture – and Maui.

- Led by former Lt. Governor and Maui native, Shan Tsutsui
- Offering positions to all active agriculture personnel from A&B
- Generating hundreds of direct and indirect jobs for Maui residents over time
- Providing job training and educational programs to employees





MAHALO