

HAWAIIAN HOME LANDS TRUST
DEPARTMENT OF HAWAIIAN HOME LANDS

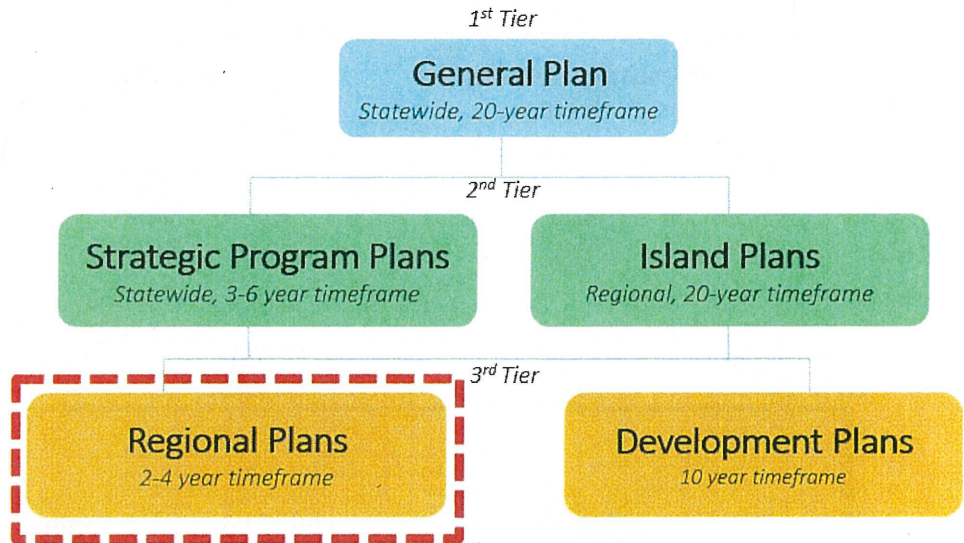
REGIONAL PLAN UPDATE

Island of Molokaʻi

The Molokaʻi Regional Plan is one of twenty-two regional plans the Department of Hawaiian Home Lands (DHHL) has developed state-wide. DHHL regional plans function as a means to develop partnerships, pursue resources (including funding), and coordinate action in each community. Regional plans also identify key priority projects that are defined and implemented by the community and are essential in moving community improvement projects forward.

The existing Molokaʻi Regional Plan was completed in 2010 and is being updated to reflect the needs, vision, and values important to the Molokaʻi homestead communities.

DHHL'S PLANNING SYSTEM



PURPOSE OF THE REGIONAL PLAN

- To directly involve the homestead community in planning for their region.
- To identify projects and priority projects that are important to the homestead community.
- To identify potential resources (such as partners and funding sources) for implementing priority projects.

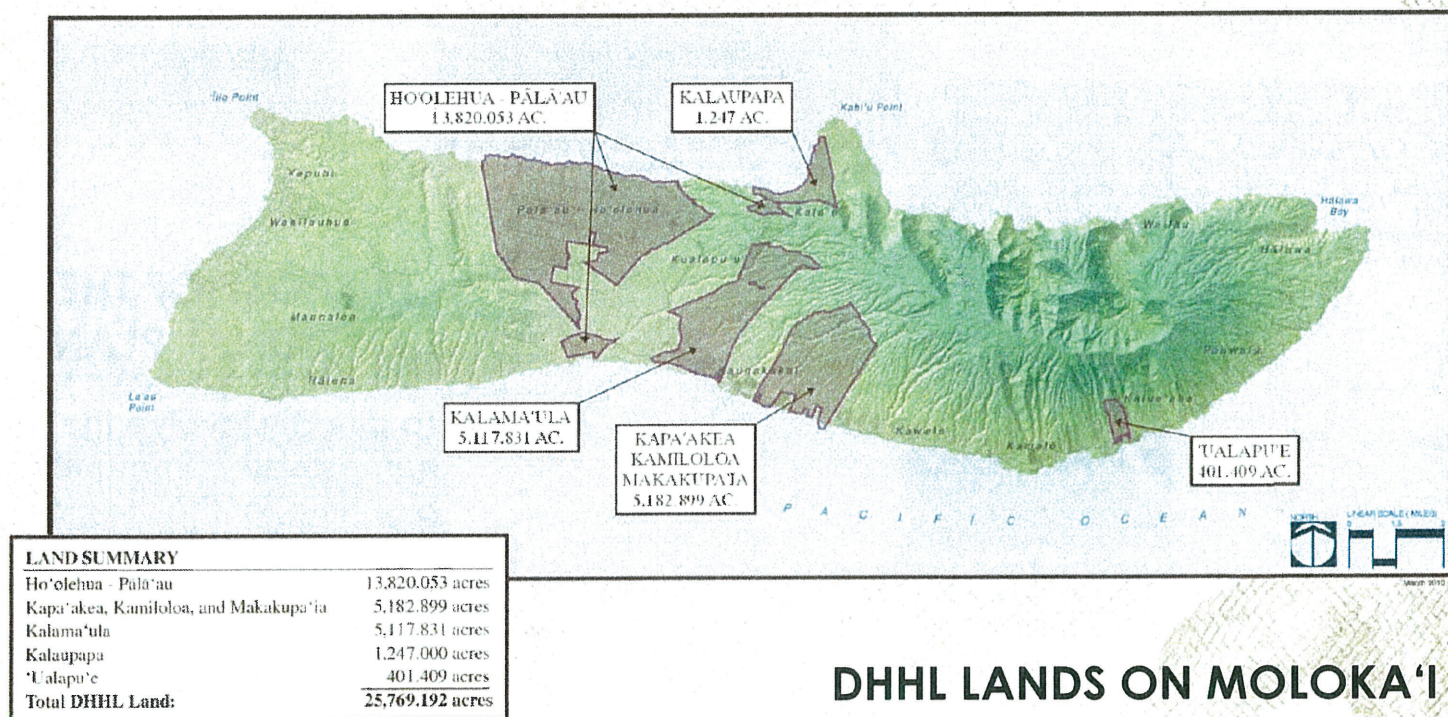
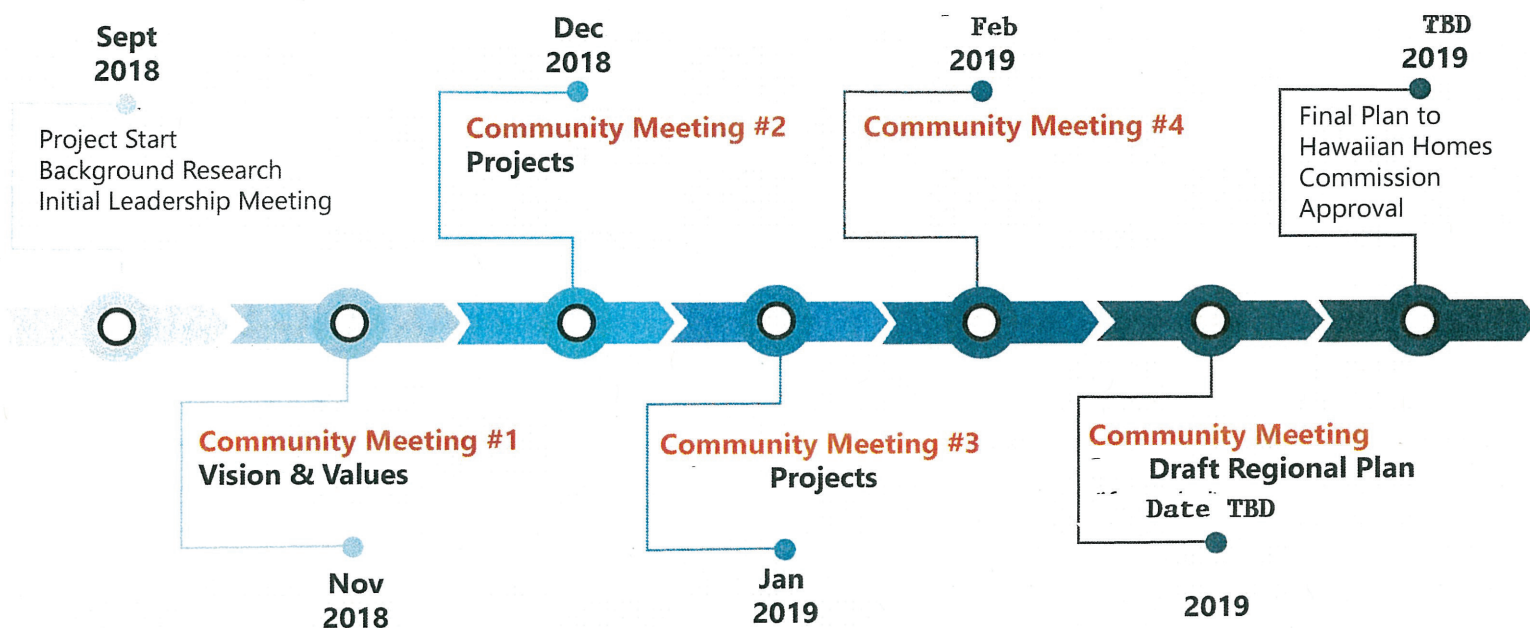
Priorities

Projects

Vision & Values

The Vision and Values of the community serve as the foundation of the Regional Plan.

revised January 2019



DHHL LANDS ON MOLOKA'I

For more information, please contact:

Gigi Cairel
DHHL Planning Office
Phone: (808) 620-9480
E-mail: gigi.o.cairel@hawaii.gov

Gabrielle Sham
Townscape, Inc.
Phone: (808) 550-3894
E-mail: gabrielle@townscapeinc.com