



HAWAIIAN HOME LANDS  
HAWAIIAN HOMES COMMISSION - DEPARTMENT OF HAWAIIAN HOME LANDS

# REGIONAL PLAN UPDATE ISLAND OF MOLOKA‘I

## Community Meeting #1

November 1, 2018 – 6:00 – 8:00 PM

Kūlana ‘Ōiwi – Kaunakakai

November 2018

DHHL ISLAND OF MOLOKAI REGIONAL PLAN UPDATE

1

## AGENDA

- Aloha and Welcome
- Meeting Purpose, Outcomes, Discussion Kuleana
- Summary of initial meeting with homestead leaders
- DHHL Planning System 101: An Introduction
  - Process and Timeline for DHHL Molokai Regional Plan
- **Activity: Community Vision and Values**
- Next Steps

November 2018

DHHL ISLAND OF MOLOKAI REGIONAL PLAN UPDATE

2

## Discussion Kuleana

- **Be Open:** open your mind, ears and heart
- **Be Comfortable:** move around and use facilities
- **Be Respectful:** courteously listen and share differing opinions
  - Disagreement is okay as long as we are respectful to each other
- **Be Creative:** work towards future solutions/aspirations
- **Everyone gets a turn first, then repeats**
- **Ask a LOT of questions**
- **Accept decisions made by group if you have been absent**
- **Cell phones off or on silent; take calls/texts outside**

November 2018

DHHL ISLAND OF MOLOKAI REGIONAL PLAN UPDATE

3

## Discussion Kuleana

**You are personally responsible for:**

- **Making sure everyone has equal opportunity to express their ideas**
- **Active listening**
- **Keeping an open mind and maintaining a positive attitude**
- **Keeping side conversations to a minimum**
- **Staying on topic**

November 2018

DHHL ISLAND OF MOLOKAI REGIONAL PLAN UPDATE

4

## Today's Meeting Purpose & Desired Outcomes

### **PURPOSE:**

To develop a shared common vision and identify important values for Moloka'i homesteads

### **OUTCOMES:**

- Common understanding of the DHHL Planning system
  - Purpose and content of a DHHL Regional Plan
- Common understanding of the overall process and timeline of the Moloka'i Regional Plan Update
- Common understanding of why it's important to participate in the planning process
- List of important values shared by all homesteads on Moloka'i

November 2018

DHHL ISLAND OF MOLOKAI REGIONAL PLAN UPDATE

5

"Eat, survive on this rock...Get mountain and ocean."

"Don't know what to not love about our community."

"The feeling of ohana"

What do you LOVE about your community?

"I love the people and the lifestyle."

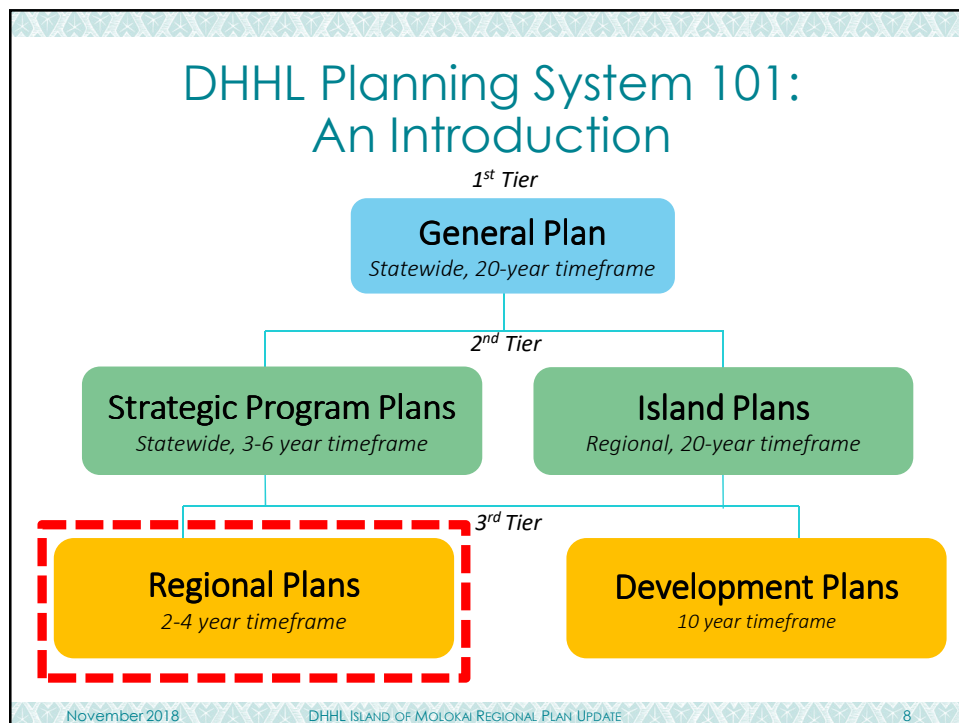
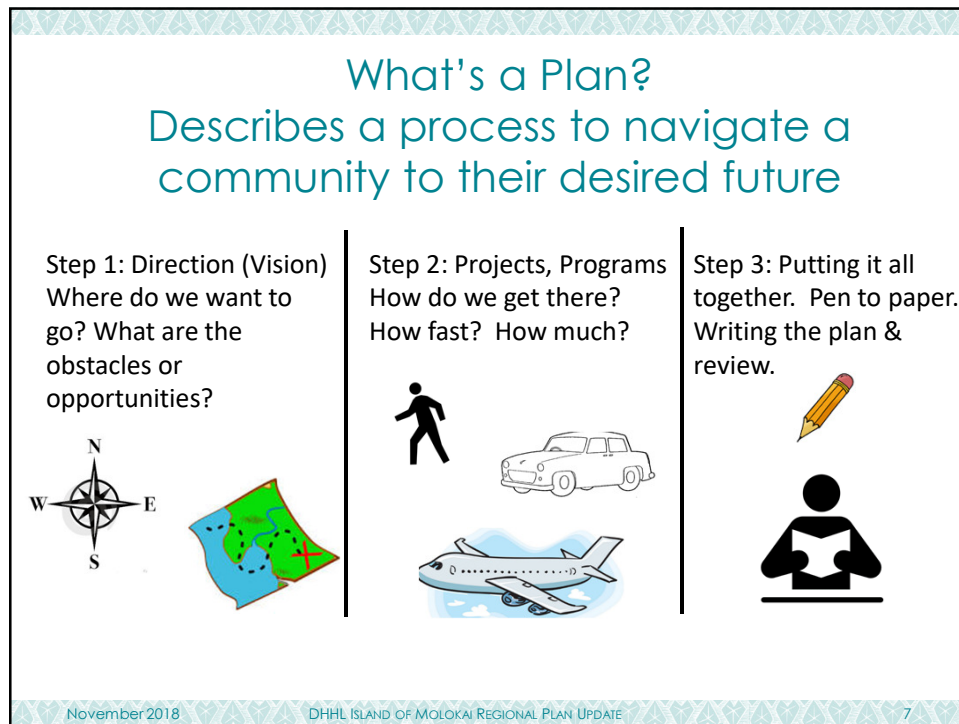
"We are all one."

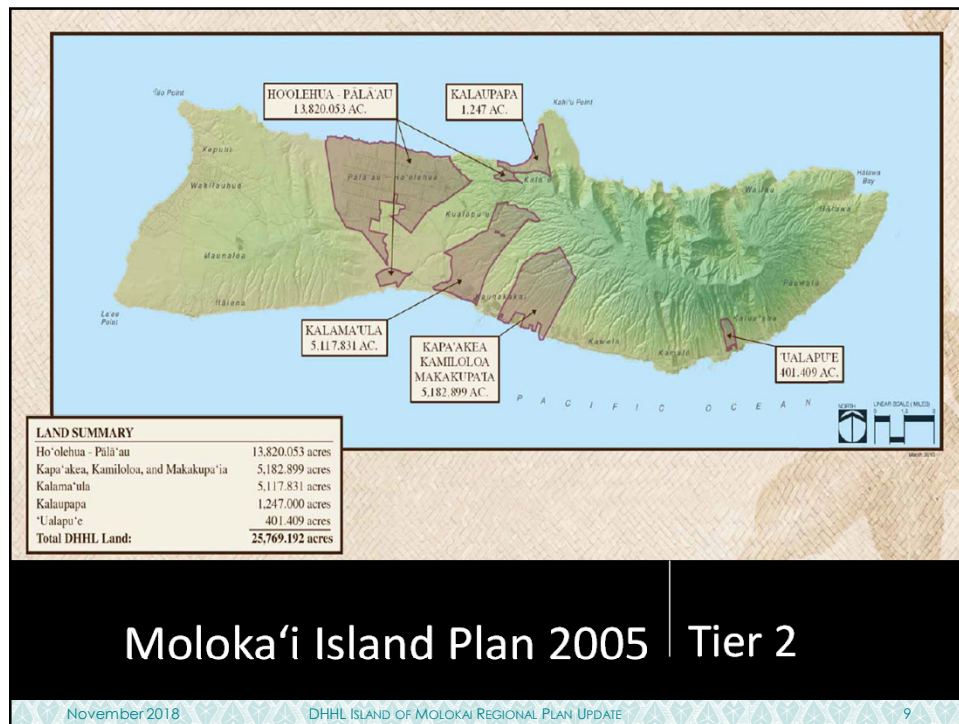
"Family-oriented island"

November 2018

DHHL ISLAND OF MOLOKAI REGIONAL PLAN UPDATE

6





**Tier 3**  
Regional Plans are:

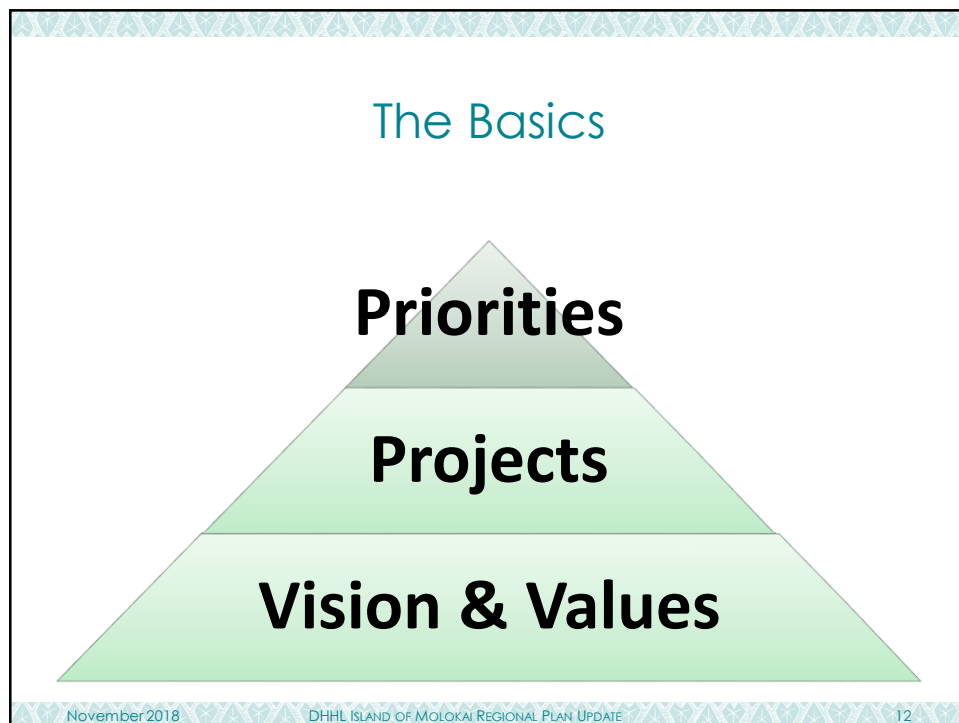
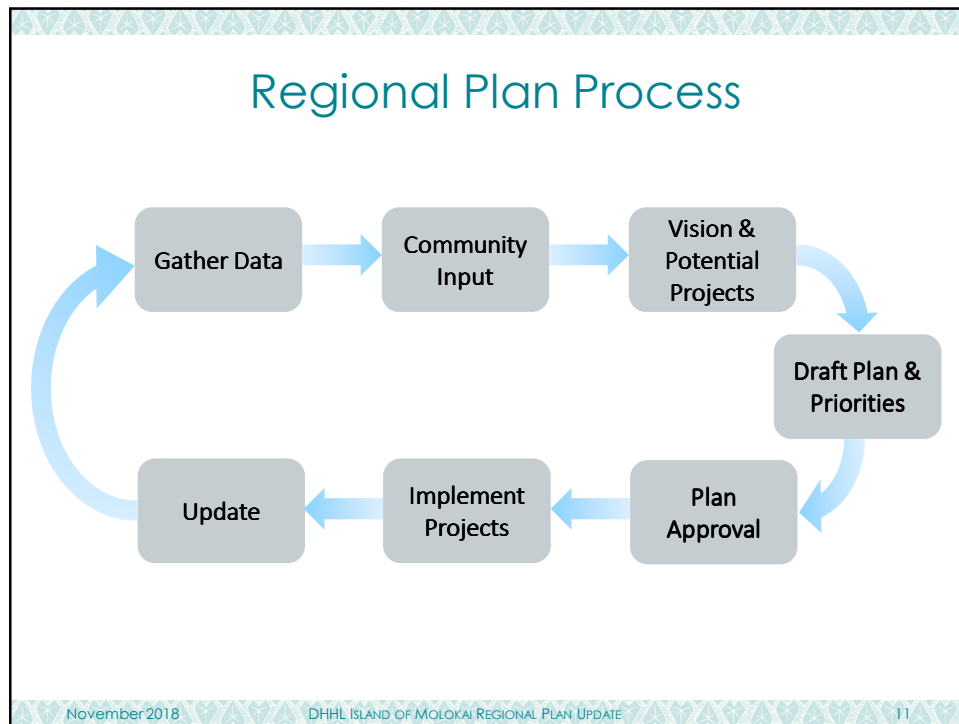
- Community-driven
- Based on community vision & values

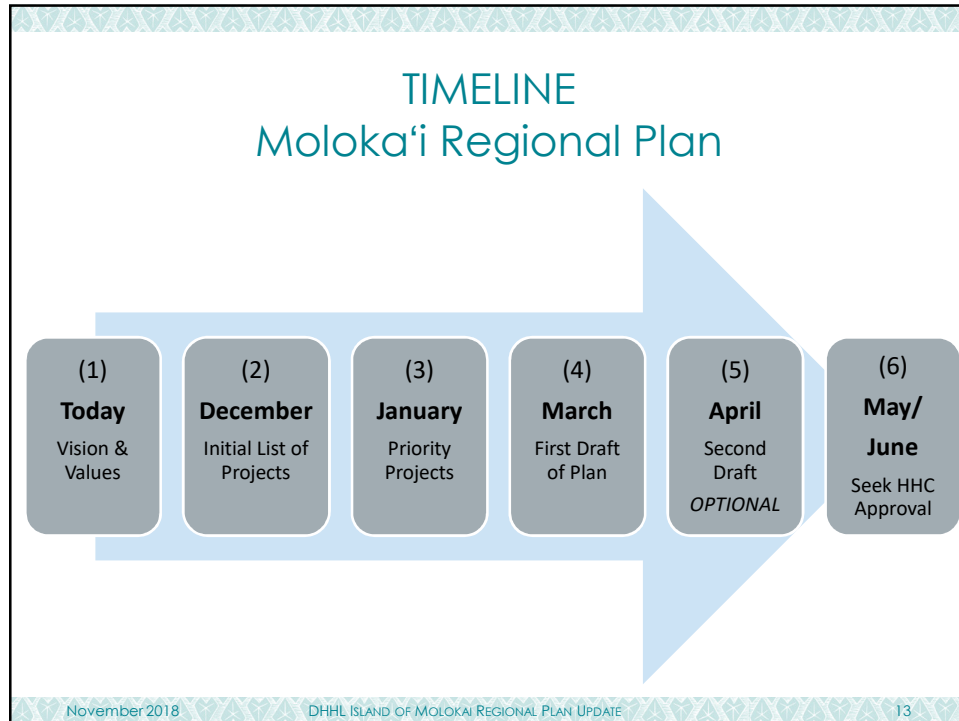
**ISLAND OF MOLOKA'I**  
HO'OLEHUA • KALAMA'ULA • KALAUPAPA • KAPA'AKEA • 'UALAPU'E  
REGIONAL PLAN  
APRIL 2010

**DHHL STATEWIDE REGIONAL PLANS**

- Identifies a region's top priority community projects
- Not the same as Maui County's Moloka'i Community Plan Update (2016)

November 2018 DHHL ISLAND OF MOLOKAI REGIONAL PLAN UPDATE 10





## ACTIVITY: COMMUNITY VISION AND VALUES

November 2018      DHHL ISLAND OF MOLOKAI REGIONAL PLAN UPDATE      14





Ford Institute FOR  
COMMUNITY BUILDING



RURAL DEVELOPMENT  
INITIATIVES

## APPRECIATIVE INQUIRY



- ✓ Focuses On What IS Working,  
NOT What is Wrong
- ✓ Builds Off Past Successes for  
Future
- ✓ Assumes Abundance
- ✓ Affirms The Positive

November 2018
DHHL ISLAND OF MOLOKAI REGIONAL PLAN UPDATE
15



Ford Institute FOR  
COMMUNITY BUILDING



RURAL DEVELOPMENT  
INITIATIVES

## What does a *Vibrant & Thriving Community* Look Like?








November 2018
16





A cartoon illustration of two people in a studio setting. One person, wearing a green shirt and a blue cap, is adjusting a large professional video camera on a tripod. The other person, wearing an orange shirt and blue pants, is looking through the viewfinder of the camera. There are two large studio lights on stands in the background. The word 'PRODUCTION' is written in a stylized font at the bottom left of the illustration.

## Activity: Documentary Film

- 1) If a documentary film crew came to Moloka'i today, what would they highlight to show what is "right" with your community & why?
- 2) If they came back in year 2050, what would they highlight & why?

November 2018 DHHL ISLAND OF MOLOKAI REGIONAL PLAN UPDATE 17

## Report Out

Each group has **10 Minutes**

## What's Next?

- Craft the Vision Statement
  - Community volunteers to work with DHHL to develop vision
- Incorporate today's information into the Moloka'i Regional Plan
- Talk with 'Ohana, friends, neighbors
- Attend Meeting #2
  - Activity: Brainstorm initial list of projects
  - Wednesday, December 5, 2018
  - 6:00 PM – 8:00 PM
  - Location: Kulana 'Oiwī Halau

November 2018

DHHL ISLAND OF MOLOKAI REGIONAL PLAN UPDATE

19

## Mahalo!

DHHL Website:

[www.dhhl.hawaii.gov/po/regional-plans/](http://www.dhhl.hawaii.gov/po/regional-plans/)

Gigi Cairel, Grants Specialist

DHHL – PO Box 1879, Honolulu HI 96805

808-620-9461

[gigi.o.cairel@hawaii.gov](mailto:gigi.o.cairel@hawaii.gov)

November 2018

DHHL ISLAND OF MOLOKAI REGIONAL PLAN UPDATE

20