



Department of Hawaiian Home Lands

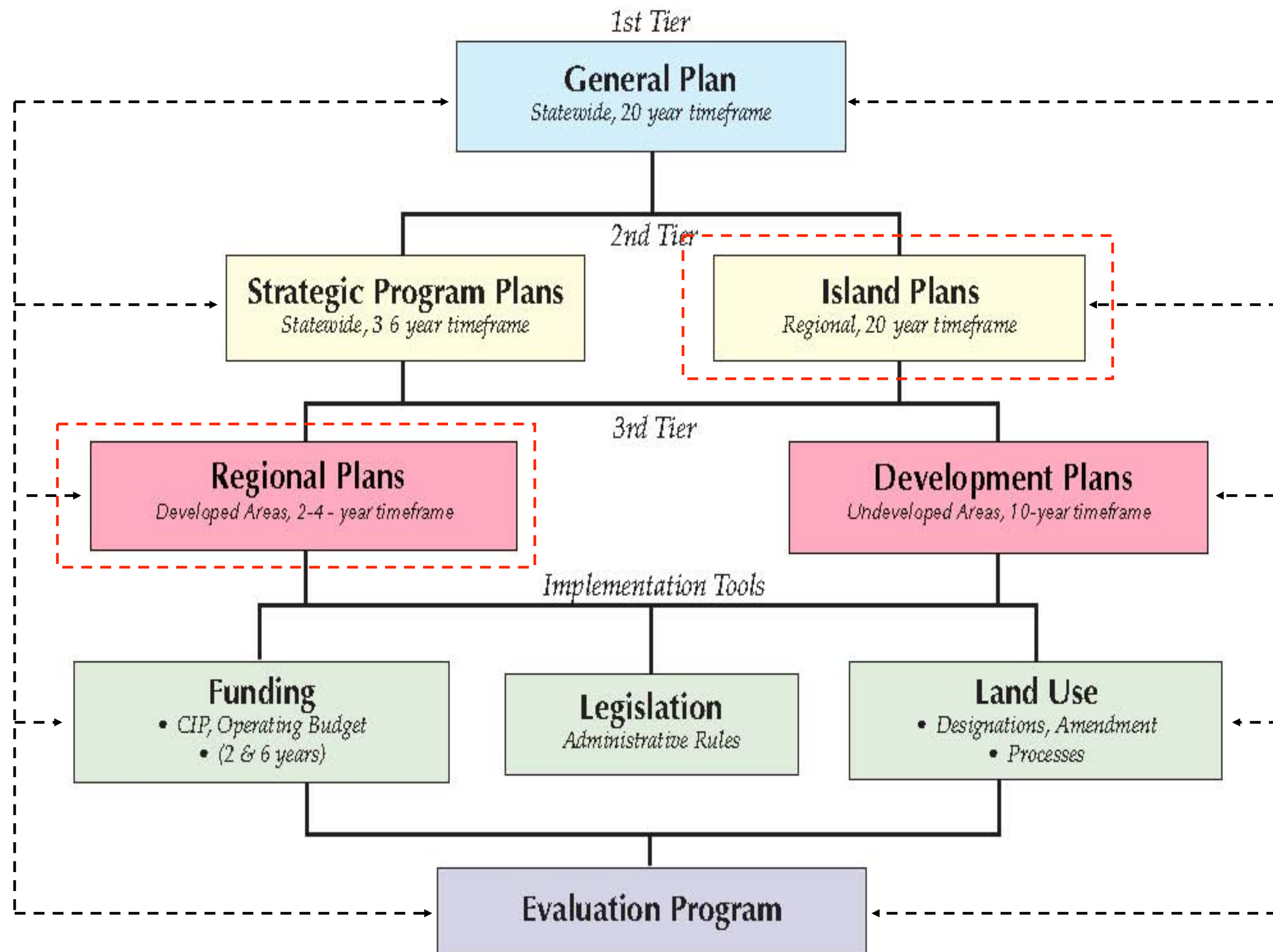
Item G-3

Moloka'i Planning Projects Status

Presented to the

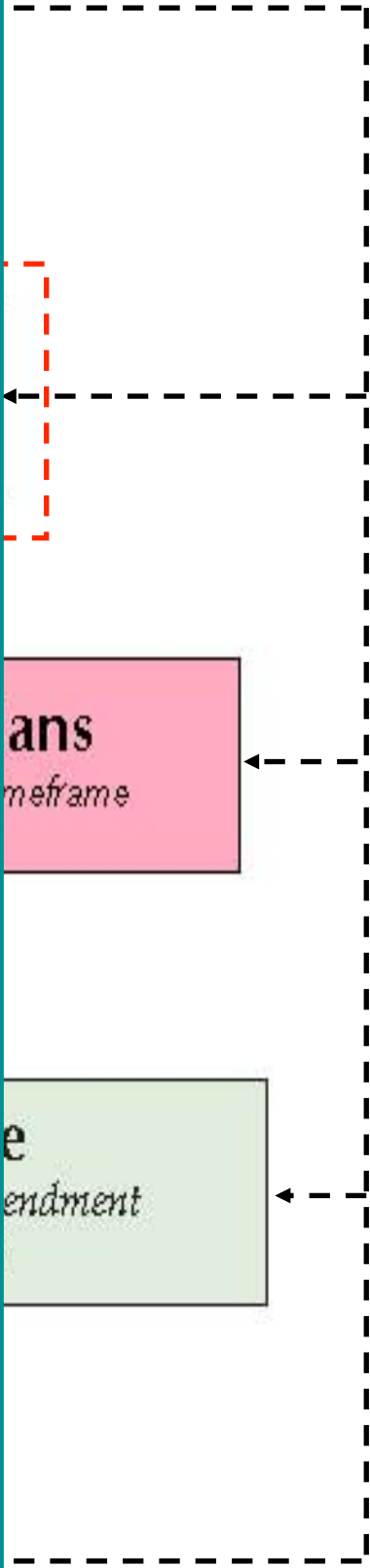
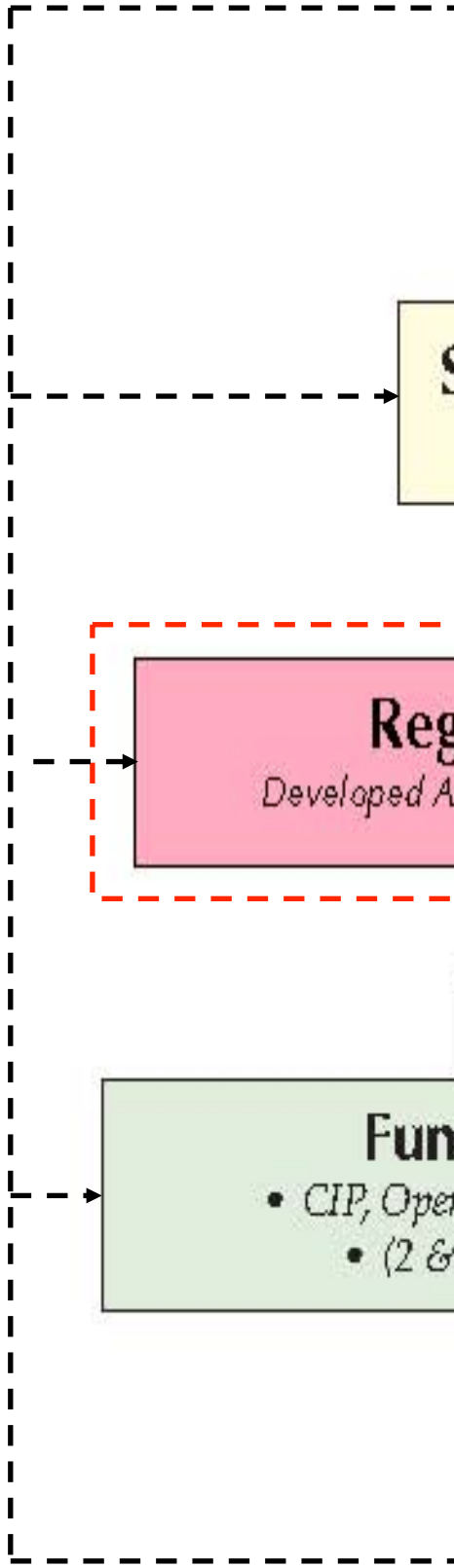
Hawaiian Homes Commission

April 15 – 16, 2019 – Moloka'i



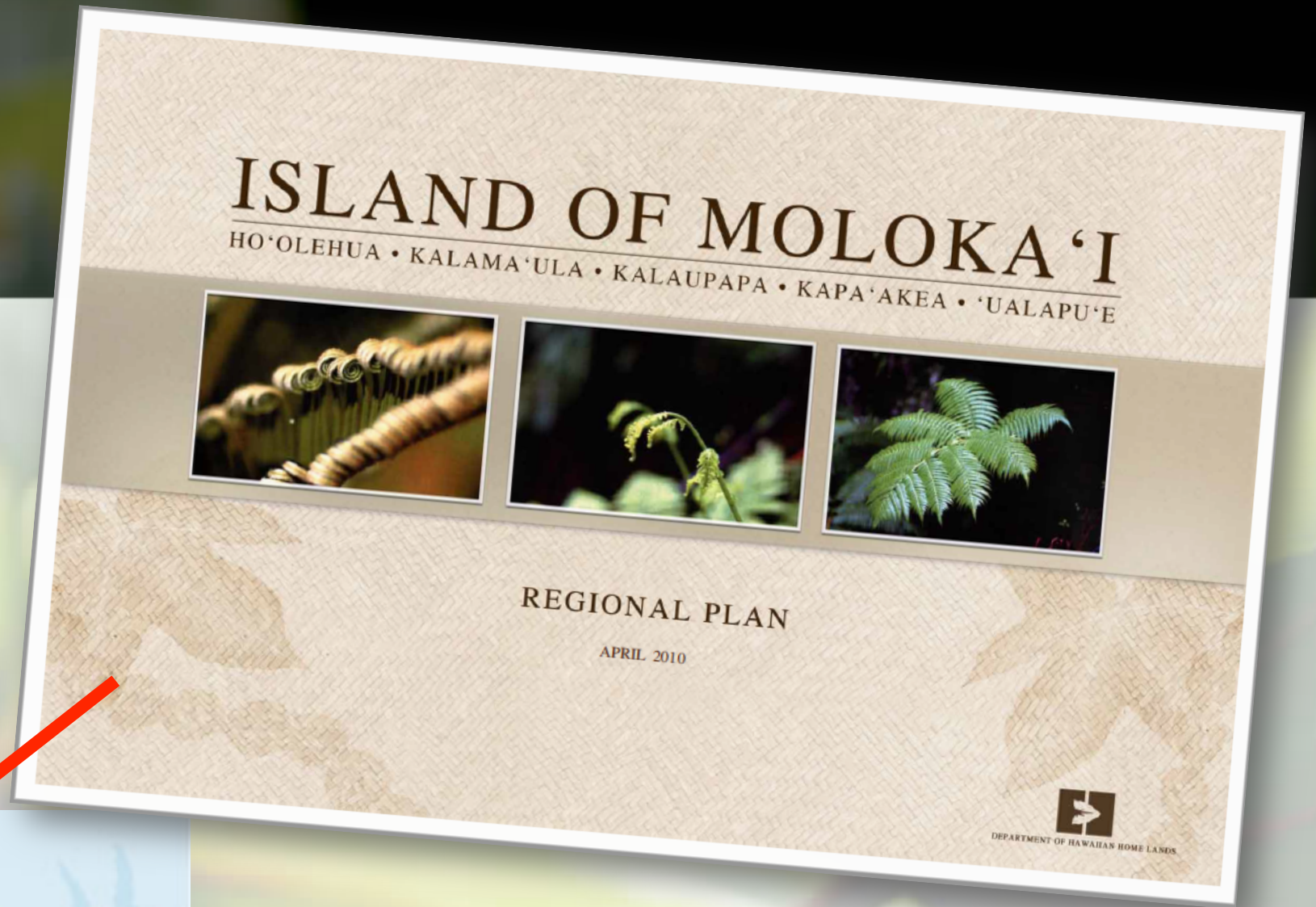
DHHL Planning System

DEPARTMENT OF HAWAIIAN HOME LANDS
MOLOKA'I ISLAND PLAN



Tier 3 Regional Plans

- Community-driven
- Based on community vision & values



- Identifies a region's top priority community projects
- Not the same as Maui County's Moloka'i Community Plan Update (2016)

2019 Molokaʻi Regional Plan Status

- ✓ Drafted Visions and Values
- ✓ Compiled a List of over 80 Projects and Ideas
- ✓ Prioritized the Project List
- ✓ Completed 4 Beneficiary Consultation Meetings
 - ✓ November 2018 – April 2019

Next Steps:

- Prepare Draft Plan
- 30-day beneficiary comment period
- Final Plan submit for Hawaiian Homes Commission approval

Tier 3

Special Area Plans

- Mälama Park – Special District
- Mo‘omomi-Anahaki – Special District

Status for both plans:

Currently procuring consultant