



HAWAIIAN HOME LANDS

HAWAIIAN HOMES COMMISSION
DEPARTMENT OF HAWAIIAN HOME LANDS

KAUAI

Project Updates

LAND DEVELOPMENT DIVISION

Item E-1 Workshop

September 16, 2019

ISLAND OF KAUAI

MOLOAA

WAIMEA

PUU OPAE

ANAHOLA

KEKAHA

WAILUA

HANAPEPE



Legend

- DHHL Property
- Existing County Water Tank
- Existing Waterline
- Ditches
- Streams
- Reservoirs
- Piilani Mai Ke Kai

46 Farm Lots

Anahola Farm Ph 1

Anahola Farm Ph 2

31 Bayview

Residence Lots

Existing
Water
Tank

DHHL – USDA RD

Anahola

Anahola Farm Lots Water System Improvements

Kaneha
Reservoir

Mimino
Reservoir

Field 1 Kealia
Reservoir

Field 2 Kealia
Reservoir

Upper Anahola
Reservoir

Lower Anahola
Reservoir

0 1,500 3,000 6,000 Feet

FUNDS AWARDED BY USDA RD

(Accepted by HHC, Nov. 2018)

USDA 2016 FUNDING PACKAGE

DHHL CONTRIBUTION	\$3,770,723
USDA GRANT	<u>\$3,055,137</u>
SUBTOTAL	\$6,825,860

USDA 2018 FUNDING PACKAGE ADDS:

USDA LOAN	\$4,100,000
USDA GRANT	<u>\$1,999,946</u>
SUBTOTAL	\$6,099,946

GRAND TOTAL \$12,955,806

ANAHOLA FARM LOTS WATER SYSTEM IMPROVEMENTS

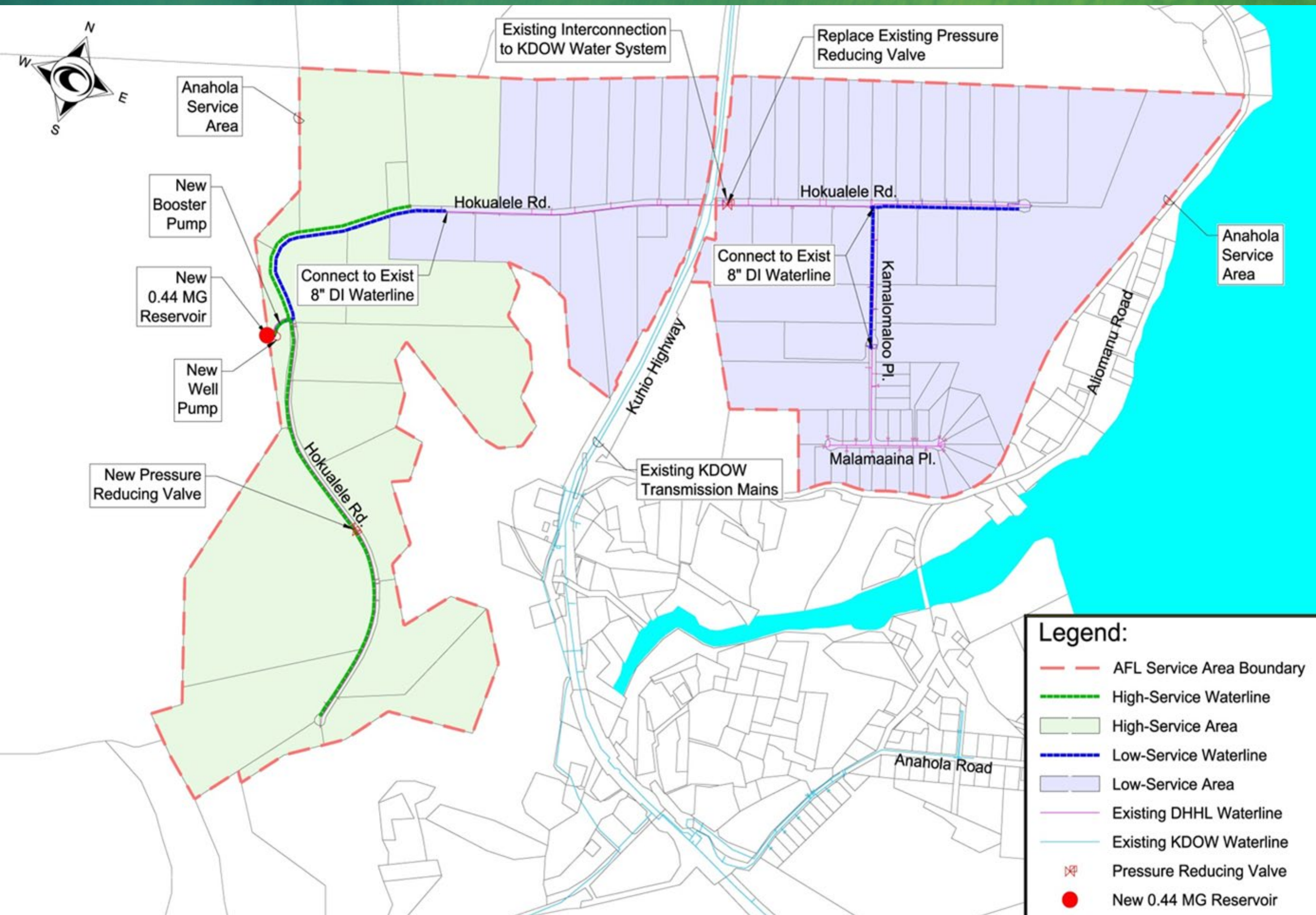
Phase 1: LOW BID: \$3,196,408

- Replacement of transmission and distribution lines
- Improvement of pressure in mauka and makai lots
- Upgrades to meters and backflow preventers
- Upgrades to fire protection

Phase 2: LOW BID: \$ 6,692,786

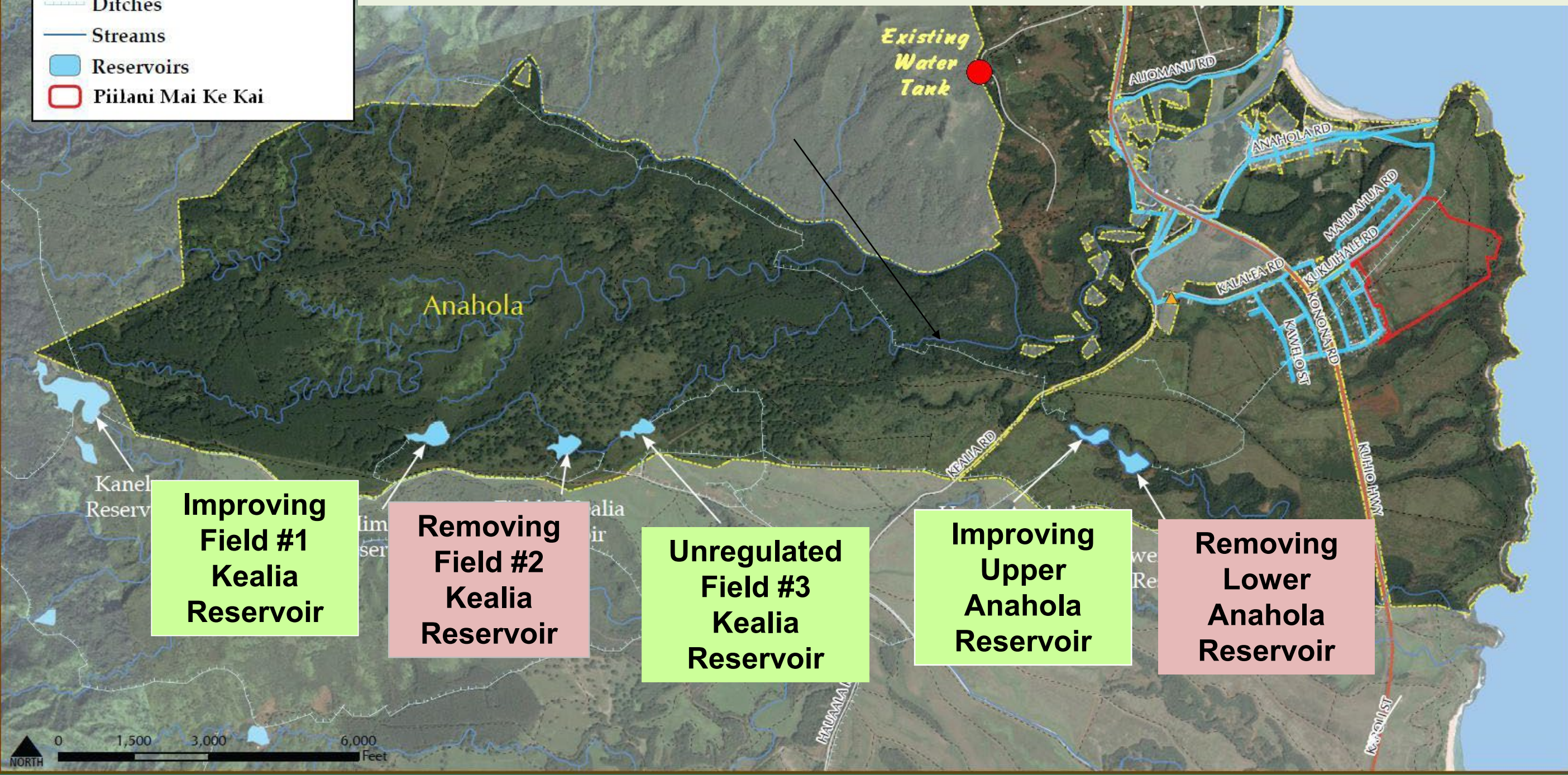
- New concrete water tank
- Pump station upgrades

**CONSTRUCTION CONTRACT DOCUMENTS IN PROCESS
TO COMPLY WITH USDA RD CONDITIONS**



Anahola Dam & Reservoir Improvements

- \$3.0 Million Legislative Appropriation for Dam Improvements
- New design engineer procured in early 2019
- Commence demolition of Field #2 and Lower Anahola in late 2019



ANAHOLA DAM AND RESERVOIR IMPROVEMENTS

“REMOVING”

Kealia Field #2 and Lower Anahola

- Designs complete and NPDES permit application at DOH.
- Awaiting revised pricing from Goodfellow Brothers (original contractor from 2016 bid).
- Estimated construction start by December 2019.

“IMPROVING”

Kealia Field #1 and Upper Anahola

- Projects redesigned to maximize reservoir capacity to the extent practical, and to meet State Dam Safety regulations.
- Revised designs to be submitted to DLNR for review in October 2019.
- Estimated construction start in early 2020, subject to permitting.

Pi'ilani Mai Ke Kai
Subdivision
Total 171 Lots

Phase 1: 80 Lots

Phase 2: 51 Lots

Phase 3: 40 Lots

Kukuihale Road

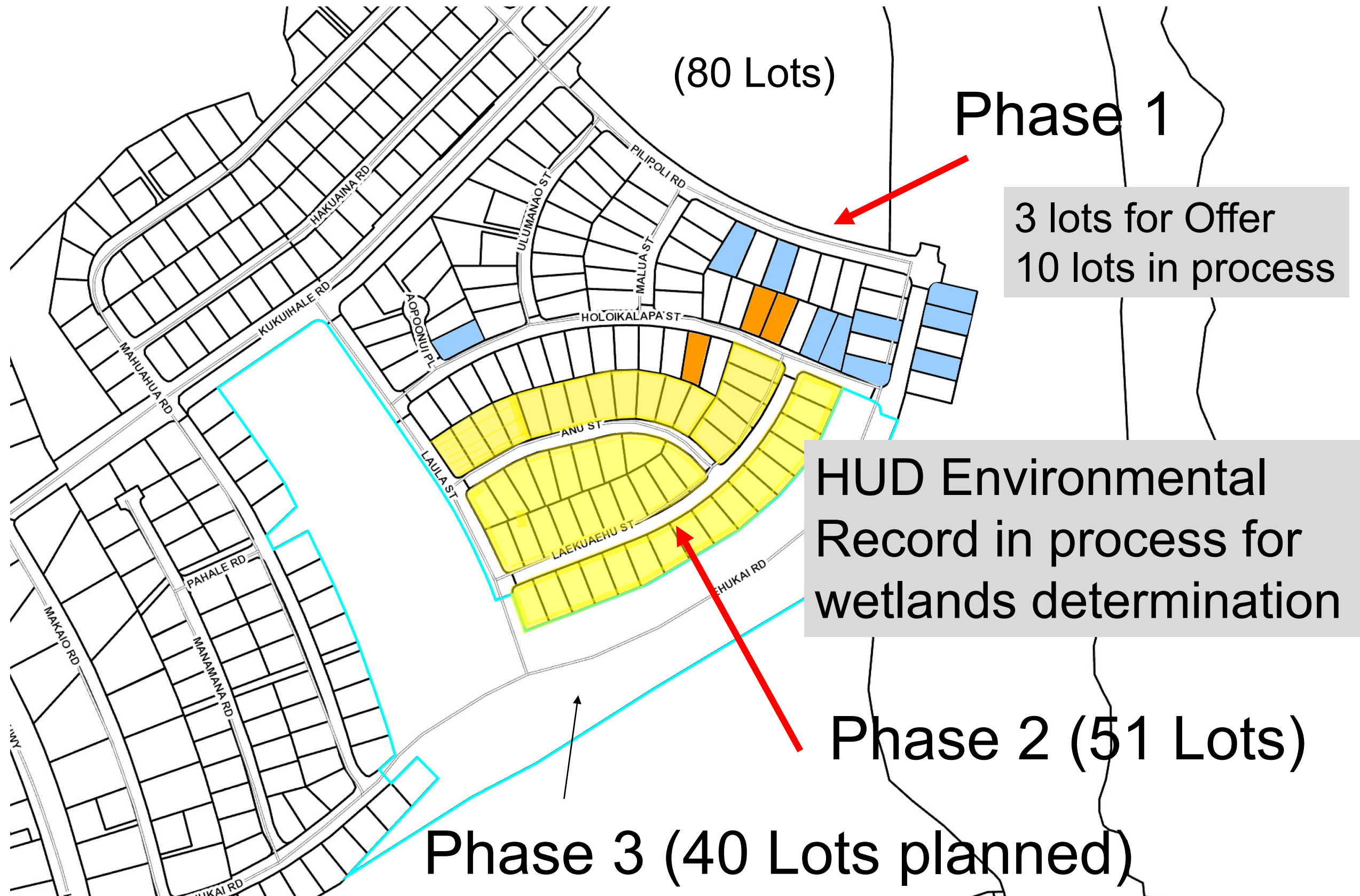
Kanuikapono Charter
School

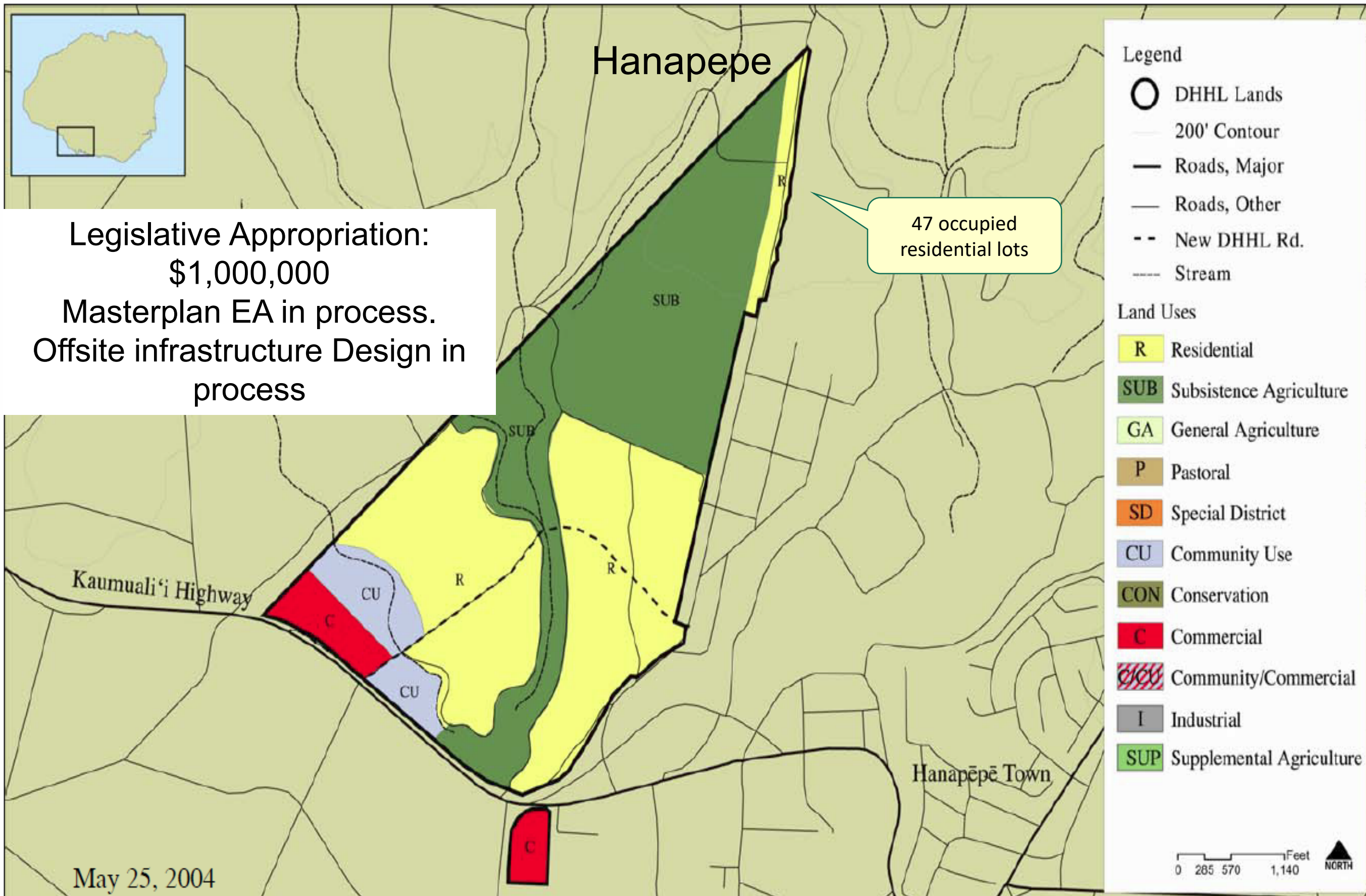
Kuhio Highway

Anahola, Kauai

Lot Assessment, Preparation for award & Offering in Progress

(Anahola – Piilani Mai Ke Kai Phases 1 & 2)





R = 168 acres; 482 lots @ 10,000 sf
 SUB = 158 acres; 13 lots @ 3 acres & 36 @ 2 acres

CU = 22 acres; 7 acres along Hwy & 15 acres behind Commercial
 C = 17 acres; 6 acres makai & 11 acres mauka

KEKAHA RESIDENCE LOTS UNIT 4

Soils Testing and Best Management Practices

- Testing of Surface and Subsurface Soils and Edibles conducted and completed by Element Environmental LLC
- Best Management Practices circulated for community use

