



HAWAIIAN HOME LANDS
HAWAIIAN HOMES COMMISSION
DEPARTMENT OF HAWAIIAN HOME LANDS

Pu'u 'Ōpae
Kuleana Homestead Lots Settlement Plan



Beneficiary Consultation Meeting

Kekaha Elementary School
February 6, 2020
6:00 - 8:00 pm

1

Hālāwai Outcomes:
Pahuhopu Halawai

Respond Pane Aku	To the mana'o & needs of beneficiaries I ta manao a matemate o na ohana
Reflect Noonoo iho	Our understanding of Pu'u 'Ōpae 'āina To katou hoomaopopo no nei aina o Puu Opae
Confirm Hooia iho	We are going in the right direction Maitai loa kahi e hele ai katou






2

Agenda
Papamanawa

Why are we here?
He aha ta katou tumu e hui ai i nei?
Planning for Kuleana Homesteading for Subsistence Agricultural Lots at Pu'u 'Ōpae
Hoolala no ta Kuleana Homestead no ta Subsistence Agricultural Lots ma Puu Opae

What has been done to ho'omākaukau?
He aha na mea i hoomakaukau mua ia?
Report of the work completed by many that brings us to tonight's presentation
Ta heite ana aku i ta hana i hoopaa mua ia i ta nui kanaka i hele mila i teia ahiahi



3

Agenda
Papamanawa

How do I as a beneficiary help this process?
Pehea au ma te ano he kanaka noi e kotua ma ta holomua
Role of beneficiary input has and will be KEY from beginning to end
He mea nui ta manao o ta kanaka noi mai ta hoomata a pau pono

What still needs to be accomplished and where do we go from here?
He aha na mea hou ae e hooto aku ai a he aha ana ta hana ma hape mai?

Timeline of remaining tasks and schedule to eventual awarding of lots
Kaina hana o na hana i koe a hoopaa i ta wa tupono e hoomaopopo aku i na ohana i ta haawi ana i ta aina

4

Agenda

Why are we here?

He aha ta katou tumu e hui ai i nei?

5



Planning Focus on Waitlist
Ta Hoolala a Makaala Pono i Papa Inoa Kanaka

- ✓ There are 2,555 combined agriculture and pastoral wait-listers for Kaua'i

Aia he 2,555 mau aina mahi a aina kula kanaka e kakali ana ma Tauai

- ✓ Many people have been waiting for more than 20+ years

O ta nui kanaka e kakali ala he oi loa aku i na makahiti he 20+

6



Planning Focus on Waitlist
Ta Hoolala a Makaala Pono i Papa Inoa Kanaka

- ✓ Beneficiaries expressed a shared frustration that the wait length is too long

Hoomaopopo otoa akula na kanaka i ta lakou nāukiuki o ta loihi loa o ta kakali ana

- ✓ Kuleana Homesteading Program will expedite the awarding of lots in as-is condition

E hoopaa kote ana ta Kuleana Homesteading Program i ta haawi ana i ta aina ma tona ano "ponoi"



 

7

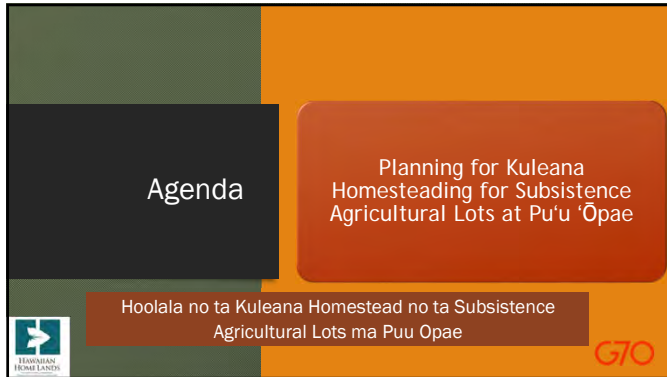
Planning Focus on Waitlist
Ta Hoolala a Makaala Pono i Papa Inoa Kanaka

- ✓ Lessee agrees to be an active member of a new community

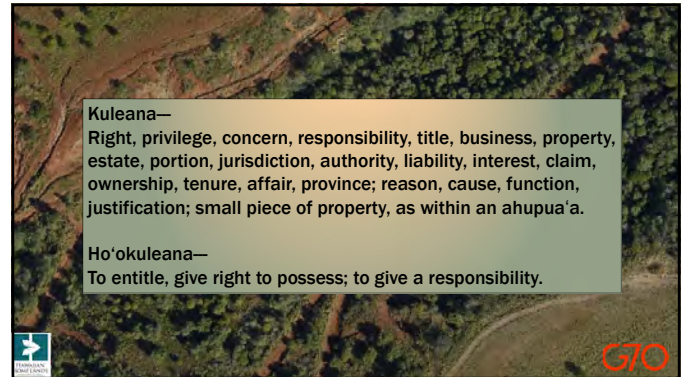
Ae a apono pu mila ta kanaka noi aina e hana like i loko o teia kaiaulu hou

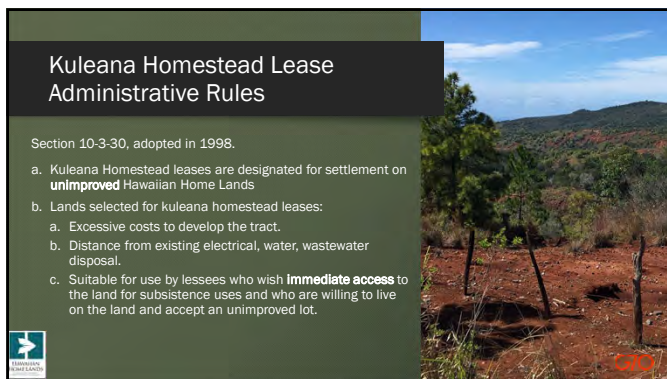
8



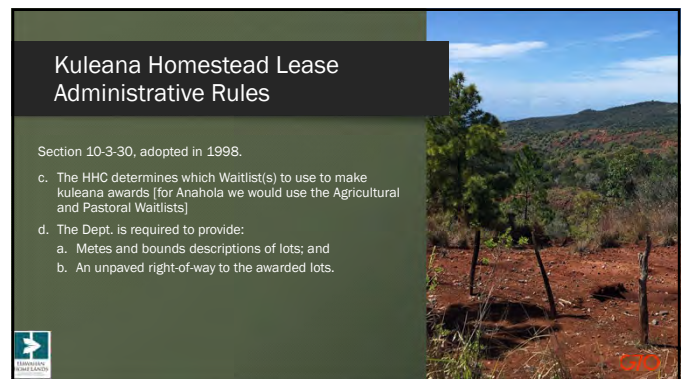
9



10



11



12

Kuleana Homestead Lease Administrative Rules

Section 10-3-30, adopted in 1998.

- e. A kuleana homestead lessee shall be subject to all applicable state codes, county ordinances, and departmental rules governing land use, building, health, and safety unless and until the kuleana homestead association's building, health, and safety codes and permitting process are approved by the HHC and become effective for that particular tract.
- f. The kuleana homestead association for that particular tract, in consultation with a licensed architect, may develop, adopt, and enforce its own zoning, building, and permitting process as long as the standards contained in state health codes and health and safety sections of the Uniform Building Code are met and that a licensed architect is willing to certify all building plans as part of the community developed permitting process.



13

Kuleana Homestead Lease Administrative Rules

Section 10-3-30, adopted in 1998.

- g. Additional conditions for Lessee:
 1. Lessee agrees to participate as an active member in the kuleana homestead association
 2. Lessee agrees to accept the lot in its "as is" condition with no expectation of additional improvements; and
 3. Lessee agrees to participate in the maintenance of the right-of-way to the kuleana tract and lots.



14

Kuleana Homestead Lease Administrative Rules

I. BACKGROUND/ORIGINS IN KAHIKINI, MAUI

- 1992 Beneficiary initiative regarding Kahikini, Maui.
- DHHL had been General Leasing thousands of acres to a rancher; over 100 years of cattle ranching had nearly destroyed the native forest. The General Lease was expiring.
- Kahikini's natural and cultural resources needed active management by native Hawaiian beneficiaries to preserve resources for future generations.

II. BENEFICIARIES RECOGNIZED DHHL CONSTRAINTS

- One land manager for the island was not enough
- DHHL policies to build infrastructure to meet county codes restricted movement onto the land and kept development costs high.
- Due to remote location, Kahikini was low priority

III. BENEFICIARY STRATEGY

- Realizing the constraints facing DHHL, the beneficiary goal was to offer beneficiary assistance to DHHL for the management, development and settlement of Kahikini.
- They presented recommendations that would not cost DHHL any money, would achieve rehabilitation and get them on the land sooner rather than later.



15

Summary of the Kuleana Homestead Lease

CONVENTIONAL LEASE

Dept must:

- Secure funding, allocate funding to area
- Contract consultants to plan and design infrastructure
- Secure Contractor to build infrastructure, build homes

Time

Applicant on Waitlist

10+ years of Opportunity Costs: Average time on Waitlist is 22 years.

- Beneficiary ages, body is less equipped to build a home. Average Age is 61
- Land remains idle or is General Leased to non-beneficiaries
- Land and its cultural resources are not managed/protected.
- Beneficiaries alienated from traditional lands
- "Rehabilitation" is not occurring.

Lessee on the Land

KULEANA LEASE

- Settlement Plan
- Metes and bounds for lots
- Unpaved right-of-way to lots

Lessee on the Land

Applicant on Waitlist



- Beneficiary settles on land now
- Builds a home and related infrastructure
- Begins subsistence or income-generating activities
- A supportive community association is established.
- The Association develops a community center and manages their resources.
- Natural and cultural resources are protected and restored through community stewardship.
- "Rehabilitation" is in progress.



16

Why would I want a Kuleana Homestead?
He aha teia mea o ta Papahana Kuleana Homestead?


- ✓ Provide opportunities for leases on undeveloped lands
Kotua ai i na kanaka noi e hoi i ta aina i hoomakautau ole ia
- ✓ Shorter time on the waitlist
Aale pono e noho loa ma ta papa inoa
- ✓ Larger number of leases to be awarded
Nui ae ta nui aina ho'olimalima i makautau kote ia

17

Why would I want a Kuleana Homestead?
He aha teia mea o ta Papahana Kuleana Homestead?

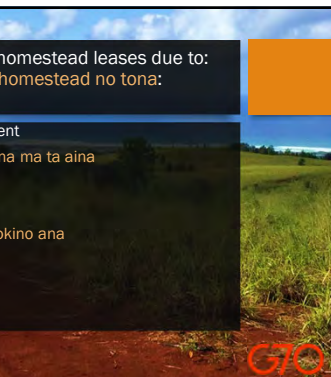

- ✓ Ability for homesteaders to start small and expand their activities over time
Hiti i na kanaka aina ho'opulapula te hoomata ma ta mea i hiki i teia manawa a hoonui i ta hana i loko no o na makahiti
- ✓ Creates Community-based management
Tatoo teia ano mea he malama aina ma o ta Kaiaulu




18

An area may be selected for kuleana homestead leases due to:
E toho paha ana ketahi aina kuleana homestead no tona:

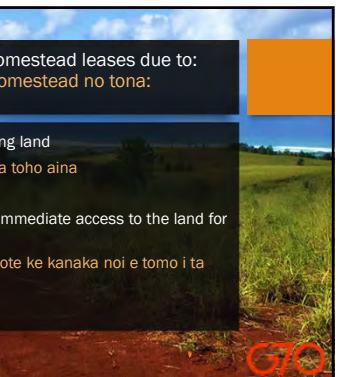

- Characteristics of land and environment
Te ano o ta honua a te ano o ta nohona ma ta aina
- Cost to develop in full
Ta nui tala pau loa e pono ai tona hookino ana
- Land management strategy
Na kaakalai e malama i ta aina

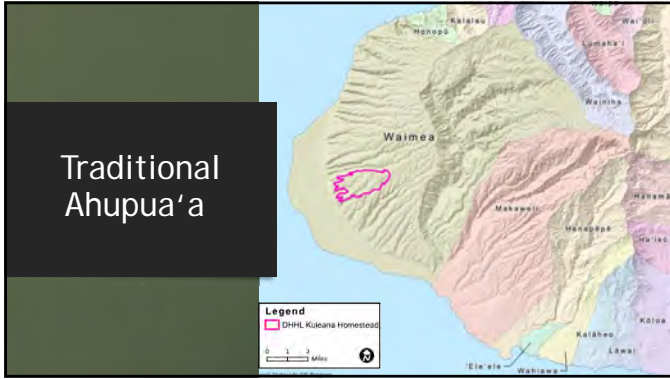
19

An area may be selected for kuleana homestead leases due to:
E toho paha ana ketahi aina kuleana homestead no tona:

- Applicant interest or proposals identifying land
Ta hoihoi o na kanaka noi i ole noi no ka toho aina
- Suitability for use by lessees who wish immediate access to the land for subsistence use
Ta makautau loa o ta aina e hoomata kote ke kanaka noi e tomo i ta aina i teia wa ano

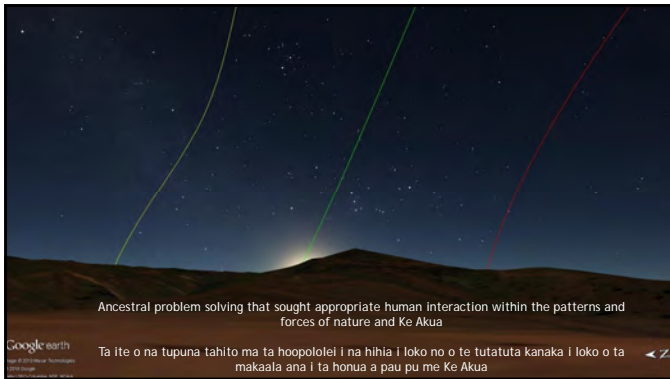
20



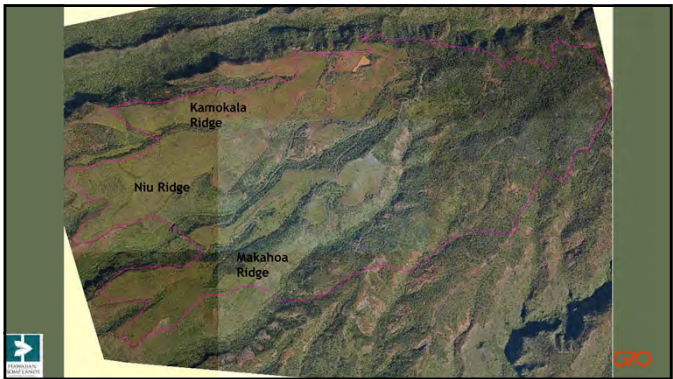
25



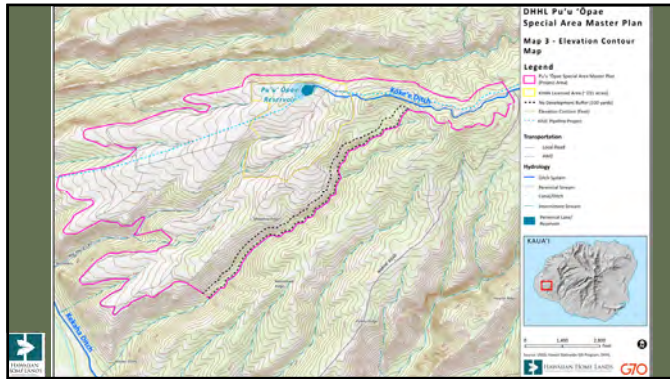
26



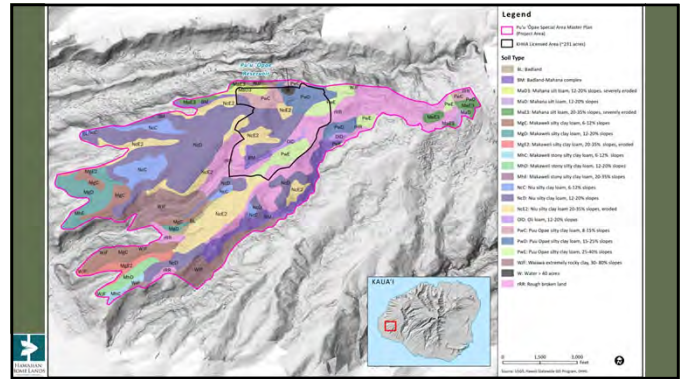
27



28



29



30



31



32



33



34



35

Existing Conditions

O Na Mea I Ite Ia

- Erosion issues limit access – 4x4 unimproved cane haul/field roads

No na apiti aai honua i paakiti ka tomo ana i loko – 4x4 he alaou i tipapa ole ia a no ta halihali to wale no

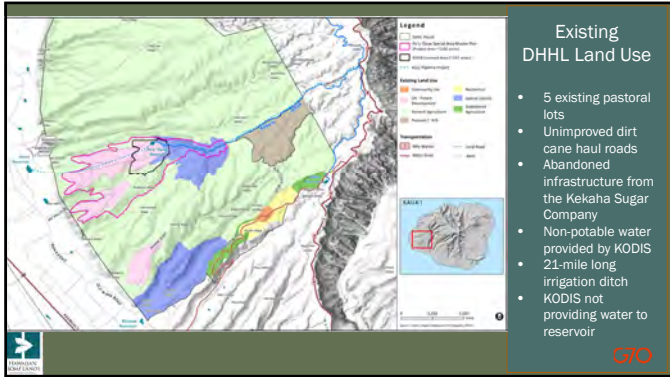
Invasive field grasses with pockets of intact native tree, shrubs, and ferns

Ulu a hewa loa kula ta mahiti a mauu a e ulu hoi ana na tumu oiwi, laalaaui, a patai i loko o ua mahiti a mauu

Surface water - 6.903 MGD from the KODIS is reserved for DHHL

Wai - 6.903 MGD mai ta KODIS ua hootapu mua ia e DHHL

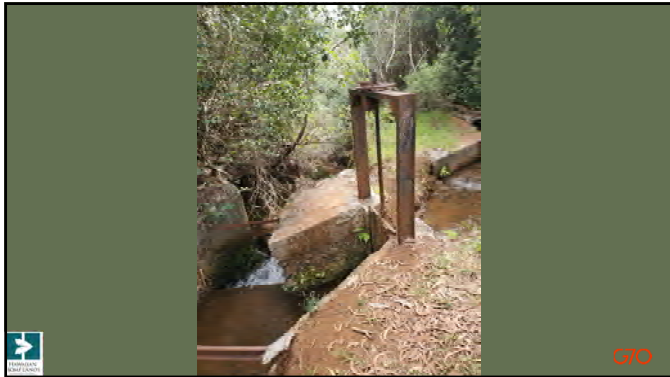
36



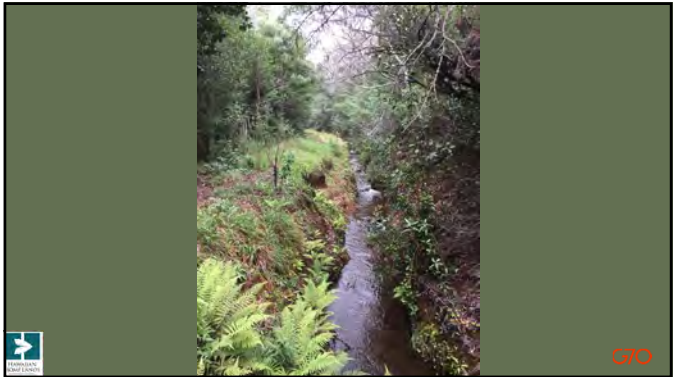
37



38



39



40



41



42



43



44



45

Agenda

What has been done to ho'omākaukau?

Report of the work completed that brings us to tonight's presentation

He aha na mea i hoomakautau mua ia?

Ta hoite ana aku i ta hana i hoopaa mua ia i ta nui kanaka i hele mila i teia ahiahi.


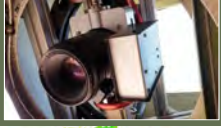
G70

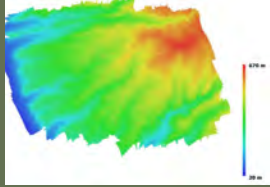
46

Lots Settlement Plan: Selection and Planning Criteria	
Criteria	Value
Topography	Less than 15% slopes, away from drainage ways and flood hazards
Te ano o ta moe ana o ta aina	Aia ma lalo o 15% tona ihona, i hiki te tahe aku ta wai i kahi e a i na hāiana wai
Roadways	Safety of existing dirt roads- erosion concerns
Alanui	Ta palekana o te alanui lepo i tela manawa – he apiti aai aina
Size	0.5-acre lots
Nui	0.5 – eka
Proximity to Water	Pu'u Ōpae Reservoir & KODIS proximity
Ta pili loa i ta Wai	Ta pili o Puu Ōpae Reservoir & KODIS
Wildfire Risk	Sited away from fuel sources, easy wildfire dispersal
Ta Matau Ahi Lapa	Aia no ma kahi e o te tumu wahie, hōa kote mal te ahi lapa
Safety & Emergency Access	Establish areas for emergency response, evacuation, safety barrier, firebreak, etc.
Palekana & Popilikia	Ta hootumu ana i wahi no ta malama ana i na pōpillikia, haalele, palekana aina, ahi, a pela aku
Proximity to Natural and Cultural Resources	Sited away from denser areas of intact native forested areas, and traditional, cultural sites and features
Ta Pili Loa aku i na Waiwai Aina a Waiwai Hawaii	Aia ma kahi e mal ta aina uluwehi nona he mea kanu oia, a waiwai aina a Hawaii

47

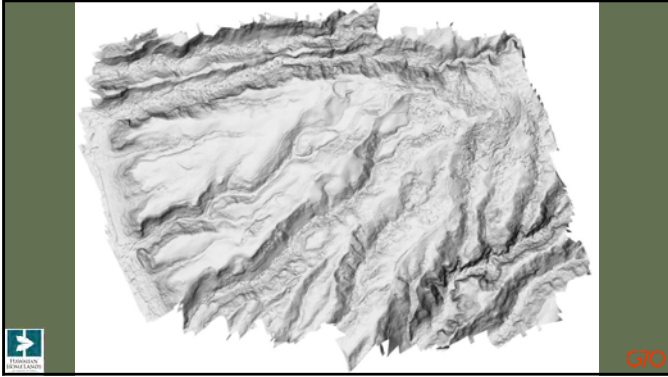
Aerial Survey

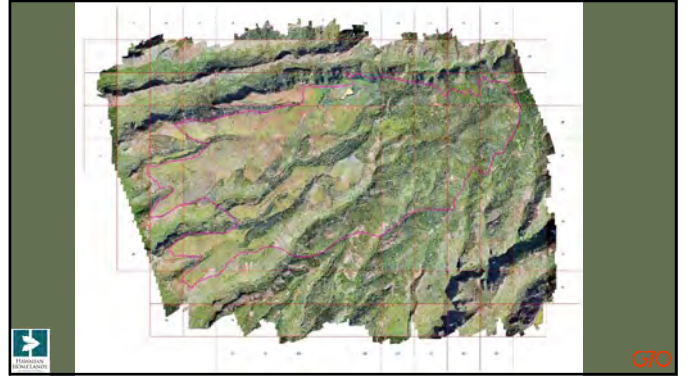


G70

48



49



50



51



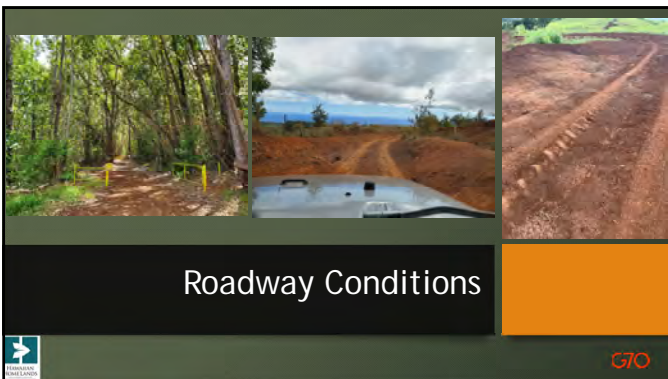
52



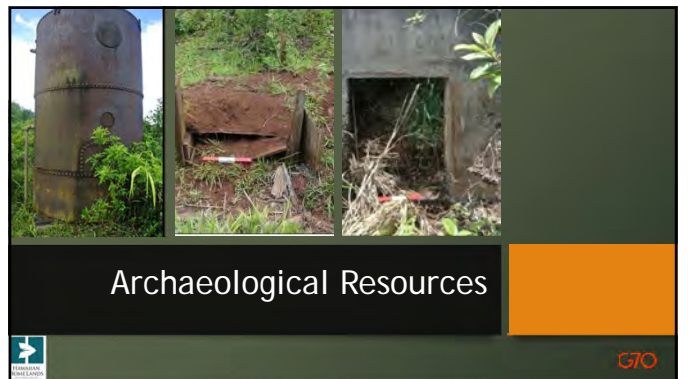
53



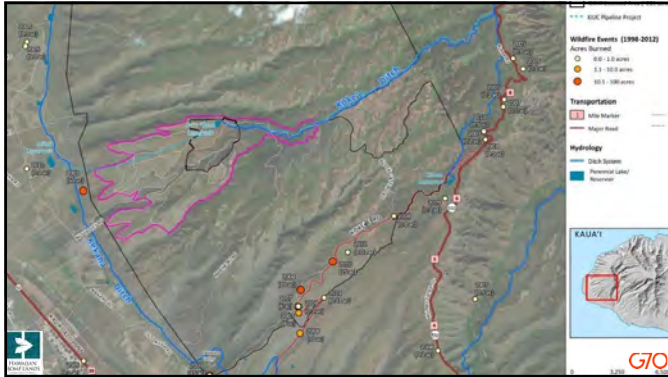
54



55



56



61

Planning to address...
Na mea e nana ai...

- Cultural and Historic Resources
Waiwai Aina a Waiwai Hawaii
- Agriculture
Oihana Mahi ai
- Public Access and Safety
Palekana a Tomo Lehulehu
- Surface Water
Wai
- Community based uses
Hanana Kaiāulu

62

Agenda

How do I as a beneficiary help this process?
Role of beneficiary input has and will be KEY from beginning to end

Pehea au ma te ano he kanaka noi e kotua ma ta holomua
He mea nui ta manao o ta kanaka noi mai ta hoomata a pau pono

63


August 2019 Beneficiary Consultation

- Option to reside on the land rated as the top priority
- Shared spaces and responsibility rated as second priority
- Preferences for awarding 240 lots
- Backyard subsistence on own individual lot rated as the preferred agricultural lifestyle

64

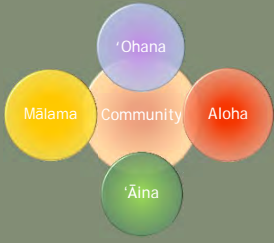
August 2019 Beneficiary Consultation

- Request for also awarding Pastoral lots
- Greatest perceived challenge would be road maintenance, access to potable water, and managing fire hazard risk
- Variability on beneficiary capacity to manage land



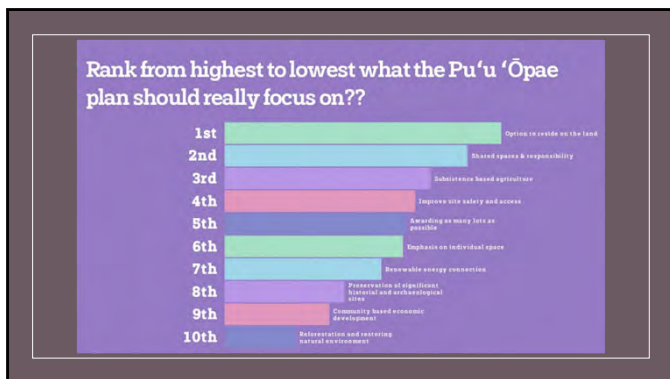
65

Mentimeter Results - BC#2

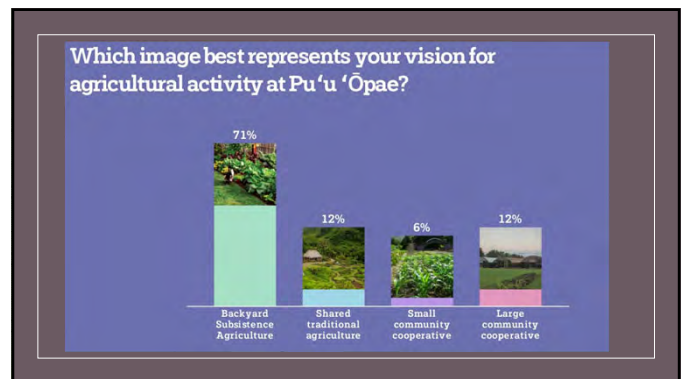


- Peaceful
- Connection to mo'olelo and mele
- Trust
- Self sufficiency
- Caring for one another
- Sustainable
- Pride in community and culture
- Sharing
- Solid foundation for future generations
- Abundance of Food

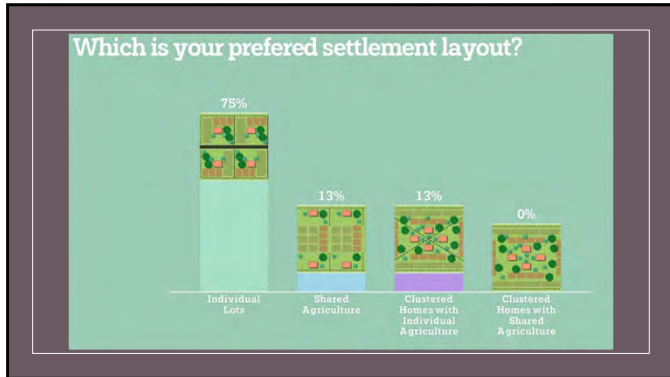
66



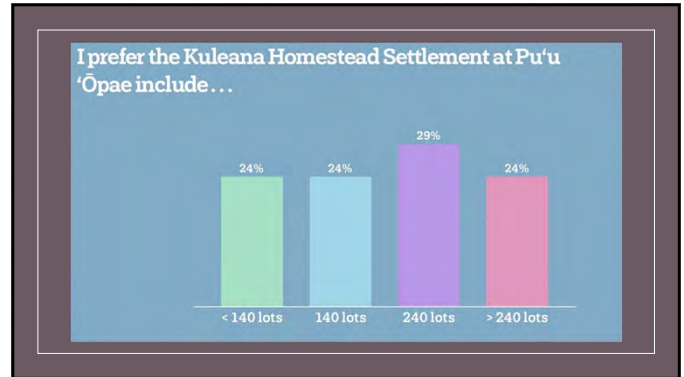
67



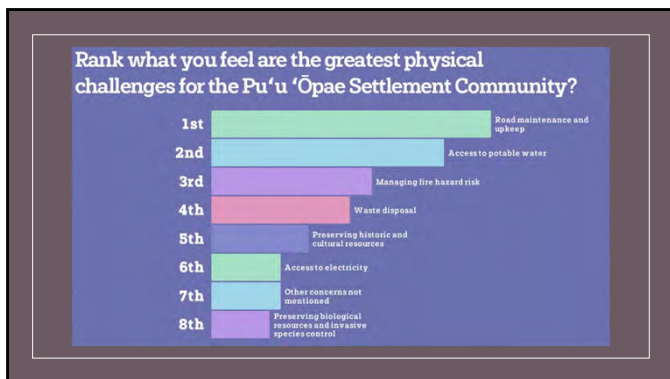
68



69



70



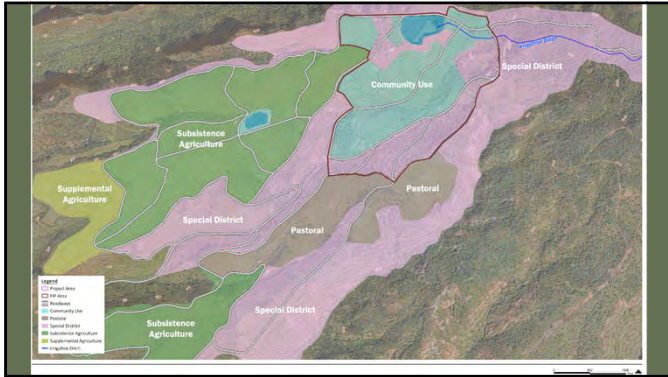
71

Agenda

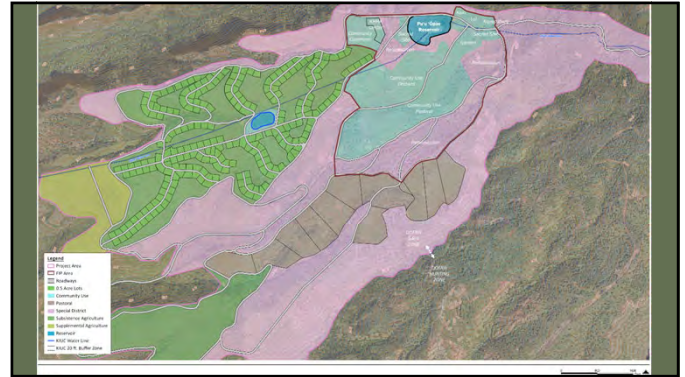
What still needs to be accomplished and where do we go from here?

Timeline of remaining tasks and schedule to eventual awarding of lots

72



73



74

Lots Settlement Plan Strategy	
Subsistence Agriculture	## acres
Subsistence Agriculture Lots	(240) .5-acre lots
Pastoral Lots	(12) 10-acre lots
Community Use	## acres
Special District	## acres
Supplemental Agriculture	## acres

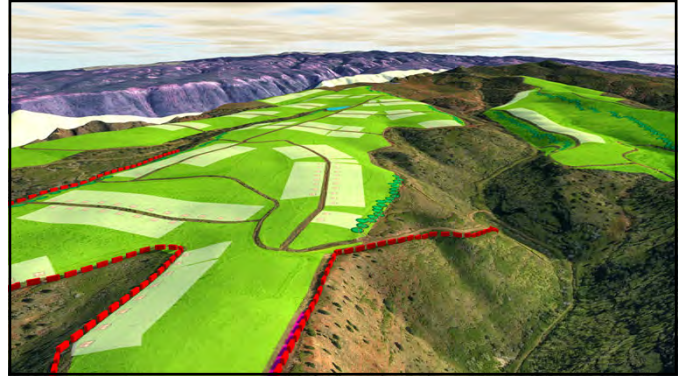
75

Lot Scheme LAANA AINA	
Water Demand	4,824 MGD
Estimated Population	970 persons (4.04 based on 2013 OHA Census NH family) 970 kanaka (4.04 mai ta itepili a OHA 2013 no na Ohana Hawaii)
Estimated Number of Vehicles	576 vehicles (2.4 vph) 576 Taa

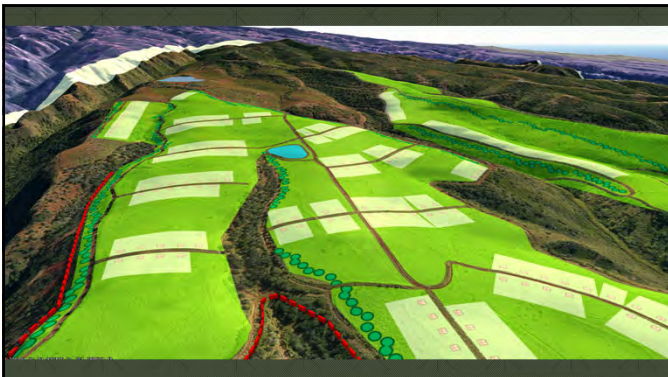
76



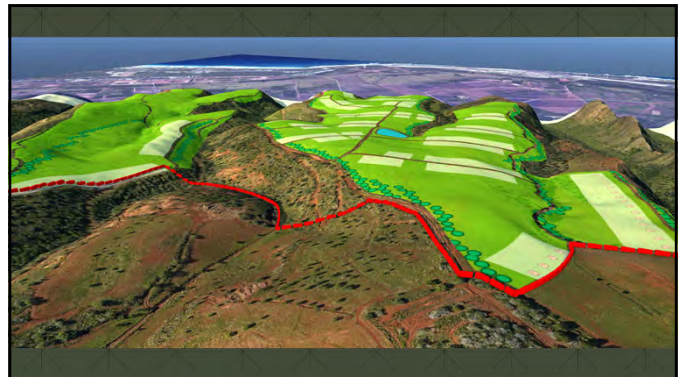
77



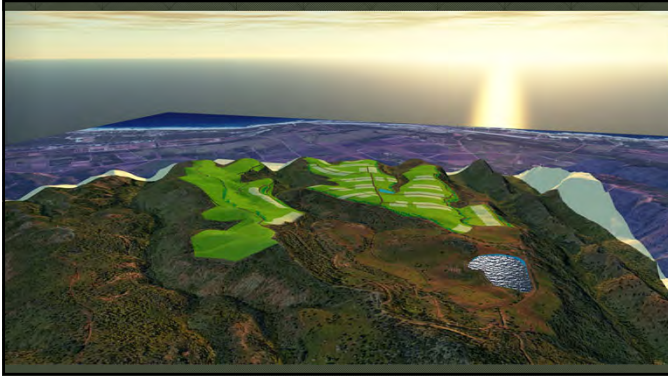
78



79



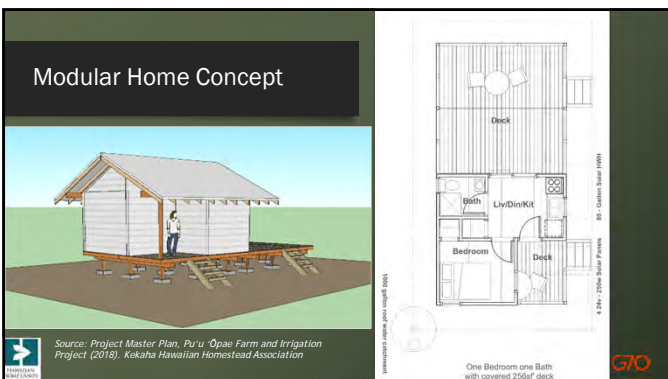
80



81



82



83



84

Subsistence Agriculture Lots

Aquaponics

- Uses 90% less water than traditional farming
- Increased crop production with six times more per square foot than traditional farming.
- Aquaponics farming does not require land with fertile soil
- Plants grow twice as fast due to the naturally fortified water from the fish
- Fish can be harvested as an additional food source



G70

85

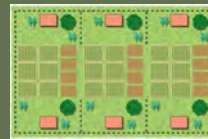
Lot Configuration



Individual Lots



Clustered Homes with Individual Agriculture



Shared Agriculture



Clustered Homes with Shared Agriculture



86

Lot Configuration

- Individual lots with shared green space for agricultural, recreational, cultural, or community building purposes
- Know your neighbors
- Strengthen community bonds
- Share resources (water catchment, farm equipment, clustered wastewater system, solar microgrid)
- Reduced costs
- Promote walkability



G70

87



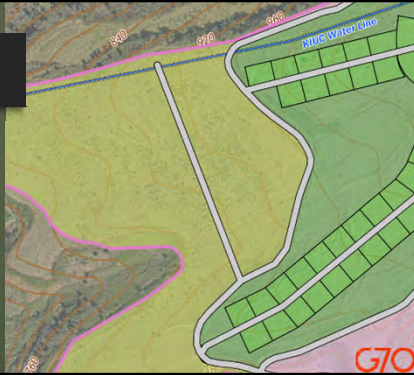
88



G70

Supplemental Agriculture

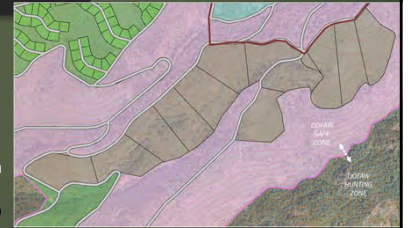
- Based on beneficiary request for variable lot size
- Land reserved to accommodate lessees who desire larger lots for agricultural purposes
- Lessees who demonstrate success at cultivating their half-acre of land may apply for additional acreage
- Offers opportunity for expansion



89

Pastoral Aina Kula

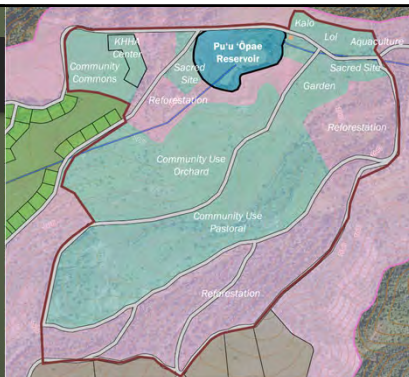
- Raise a variety of livestock for meat and dairy needs
Ta hanai ana i na ano holoholona like ole no tona io a i tona waiu
- Testing of existing grasses and pastoral uses for soil remediation
Ta nana ana ne he tupono te ano o ta mahiki a malama pu i te ano o ta lepo



90

Community Use

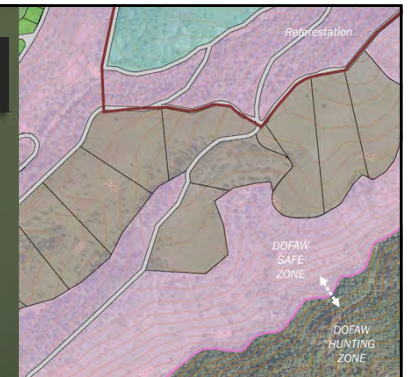
- 231 acres under DHHL License No. 816 by KHHA
- Community agricultural training program
- Community Orchards
- Community pastoral area
- Reforestation Projects
- Community Commons
- KHHA Center
- Cultural sites



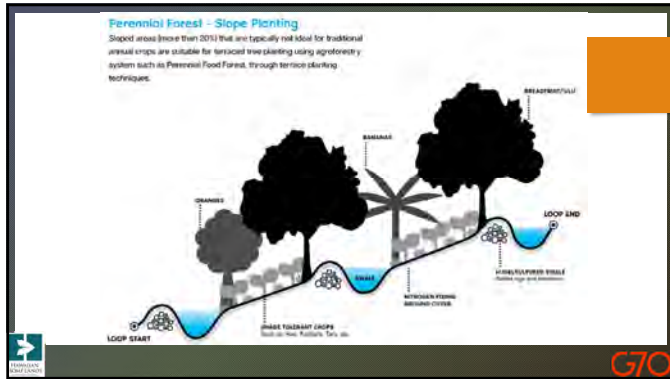
91

Special District

- Approximately ## acres
- Gulch lands with rocky outcrops
- Steep and irregular topography
- Could be used for reforestation and cultivating native plants that are important for cultural activities
- DOFAW safe zone



92



93

Pu'u Ka Pele Forest Reserve Management Plan

- Pu'u Ka Pele Forest Reserve has plans to maintain its natural resources and hunting game by placing fences around rare/native plants and by controlling the goat population to protect the native ecosystem
- He mea i hoooho mua ia e Puu Ka Pele Forest Reserve e malama a hooulu i na waiwai a i ta alualu holohona ma teia aina ma ka tutulu ana i pa uea a puni na mea kanu oiwi a kakaikahi ma ta hoemi ana i ta nui o na tao e noho ala i mea e tiai i te kalaola
- Timber standing in the forest could provide great business if it is sustainably replanted after being harvested
- Ne hooihina ia i na tumu laau he kotua nui no nae ma ka tuai aku, o ta mea nui nae ta kanu hou ana

The G70 logo is in the bottom right corner.

94

**KIUC Hydroelectric Project
Ta Pahana Uila Wai Tahe a KIUC**

- The Kaua'i Island Utility Corporation (KIUC) proposing hydroelectric energy project

Hapai mua mila o Kaua'i Island Utility Corporation (KIUC) i Pahana Uila Wai Tahe

- Support renewable energy opportunities reducing dependence on fossil fuels

Te tatoo ana i teia hana i hoemi iho ta nui o te tautai ana i ta uila mali

95

**KIUC Hydroelectric Project
Ta Pahana Uila Wai Tahe a KIUC**

- Planned to be designed for up to 25 megawatts (MW) of peak hydropower capacity, 250 megawatt hours (MWH) of daily storage capability, and thirty gigawatt hours (GWH) or hydroelectric generation annually

Hoolala i a ma tona hiti he 25 mau megawatts (MW) ta nui tietie o ta itata uila, 250 hola megawatts (MWH) nona ta malama ana i ta uila, a kanakolu hola gigawatts (GWH) i ole ta nui uila wai tahe o ta makahiti

- It is also intended to provide irrigation water to support agriculture

Matemate pu e tatoo i ta wai ma ta auwai e hanawai i ta mea kanu

96

KIUC Hydroelectric Project Ta Pahana Uila Wai Tahe a KIUC

- KIUC will improve existing roadway from Koke'e Road to the Pu'u 'Ōpae Reservoir
- Niu Valley Road will also be improved, but to a lesser extent
- Improvements will include rock, crowning, grading, and constructing drainage ditches alongside



G7O

97

KIUC Hydroelectric Project Ta Pahana Uila Wai Tahe a KIUC

- A 20-foot buffer will allow maintenance vehicles to access the water line



98



Potable Water

- Haul in personal drinking water
- Rainwater Catchment System



G7O

99




Grey Water

- Reuse domestic wastewater for irrigation




G7O

100



Wastewater

- Individual Wastewater System (IWS)



101




Wastewater

- Cluster Wastewater System
- A cooperative wastewater treatment organization that collects wastewater from a small number of homes and transports it to a pretreatment land absorption area with no surface discharge of effluent




102

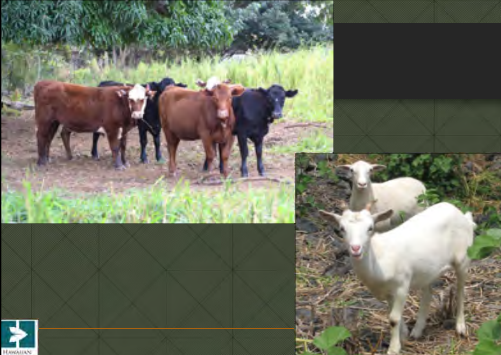


Wastewater

- Composting toilets
- Specific design requirements shall be reviewed and approved by the director on a case-by-case basis...until the community develops its own codes and permitting process




103



Wastewater

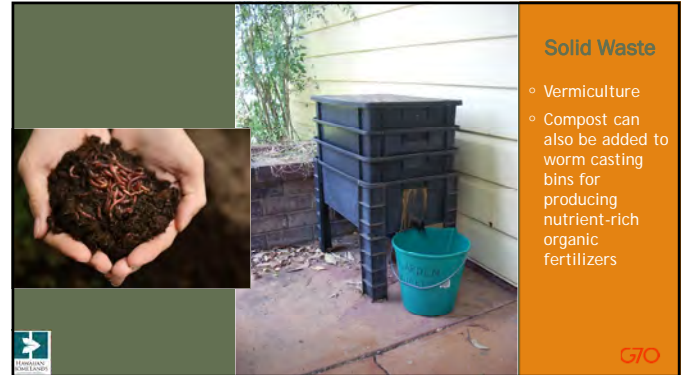
- For livestock waste, the lessee shall be responsible for all required waste management plans for proper disposal or management of non-domestic / agricultural wastes, as required by HAR. A farm plan or conservation plan (NRCS) may be required and is the responsibility of the lessee.



104



105



106



107



108



Agricultural Cooperative / Food Hub

- If a surplus of food can be grown, beneficiaries may have the opportunity to supplement their incomes with the agricultural products grown on their lots
- An Agricultural Cooperative is an organization in which a cluster of small farms work together as a business, to share resources and help each other to produce and sell their crops
- Strengthen collective market power
- Facilities to process and store products
- Help facilitate agricultural product collection, processing, and distribution
- Fill the gap between production and consumption
- Generate jobs and revenue



113






Farmers Market

- With lots of agricultural land, a farmer's market could be held once a month for economic benefits
Olai nui loa mila ta aina e mahi ai ai, malia hiti paha te malamala i la e tualaku i ta mea ai, penei paha e kotua i te ola ana o ta kaiaulu
- A place that brings the community together while educating them about local foods
He wahi a aina kahi e hui like ai ta kaiaulu a hiti te ao like pehea e hooulu a mahi pu ketahi i ta ai o nei
- They also offer group tours of the farm and feed the group with their fresh foods for a price.
Hiti te huatai pu mai na malihini ma ta hanai pu ana aku i ta ai i hooulu ia ma ta aina a kaki pu la lakou




114

Volunteer Services Na Hana Tatoo a Kotua

- Monthly volunteer services to remove non-native species from forest reserve area and help plant crops could be a possible option to bring the community together
Malama pa mahina he la e huhuti i na mea kanu mai ta nahelehele a kotua pua ma ta kanu ana i na ai, penei paha e hui like ai ke kaiaulu
- There is also an option to sign up as an individual or as a group to take a tour of the fishpond and help restore the area with a small fee
He hiti no te katau inoa ma te ano he kanaka wale no a i ole he hui paha nana e huatai ma ta loko ia a kotua ma ta hoamaeae ma ta lulu tala lilili




115




Fire Management

- community-based management approach
- reducing and maintaining vegetation along roads
- managing grasses to interrupt continuity of fuel sources
- managing "ladder fuels," or areas where ground vegetation is connected to canopy vegetation
- eliminating illegal dumping
- creating buffers of reduced vegetation around developed areas
- Planning for drier conditions and addressing seasonal heavy growth of vegetation
- Allocate portion of Community Use land as a staging area for setting up a portable dipping pool



116




Fire Management

- Secondary containment reservoir to help break up the pressure - 500 feet of elevation
- Reservoir can also serve fire protection needs
- All three KIUC reservoirs will be available for dipping during a fire

117

Resilience Hub

- The remoteness and limited infrastructure of the proposed Settlement Plan Area creates a need for meaningful community engagement to plan for and protect against potential hazards
- Resilience Hubs are community serving facilities that support residents and coordinate resource distribution and services before, during or after a hazard event
- They have the potential to reduce burden on local emergency response teams, improve access to health improvement initiatives, foster greater community cohesion, and increase the effectiveness of community-centered institutions and programs



118

WHAT IS A RESILIENCE HUB?



OFF GRID SOLAR POWER
Designed to provide power during an emergency, and reconnect to the grid once power is restored.

RISK REDUCTION AND DISASTER TRAINING
Access to best practice re-construction information to be better prepared for future emergencies.

COMMUNICATION HUB
A single point for access to news and information during and after an emergency.

CLEAN WATER
Reinforcing existing water systems so communities have access to safe drinking water.

EXISTING COMMUNITY CENTER
RESILIENCE HUB

COMMUNITY GARDEN AND FARMING RESOURCES
To help small farmers recover lost supplies, seed and crops.

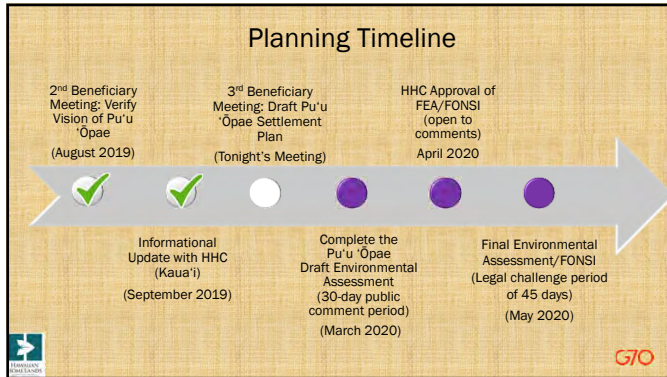
119

Resilience Hub

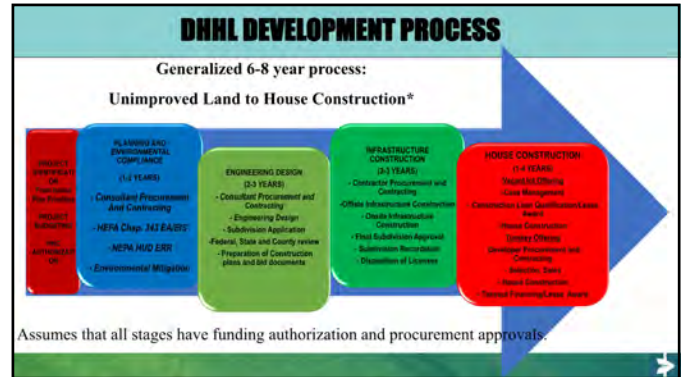
- Community center and gathering space
- Training/education classrooms
- Emergency shelter for lower Kekaha residents within the tsunami evacuation zone
- Energy storage (batteries/fuel tanks)
- Wifi hotspot and charging station
- Storage for emergency equipment (food, water, ice, medical supplies, generators, fuel, maps, tools, portable water tanks)
- Emergency communication systems (HAM radio)
- Temporary medical center
- Helipad for firefighting and air-evacuation



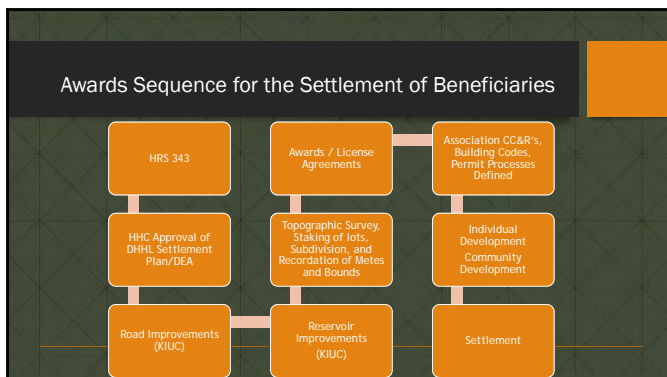
120



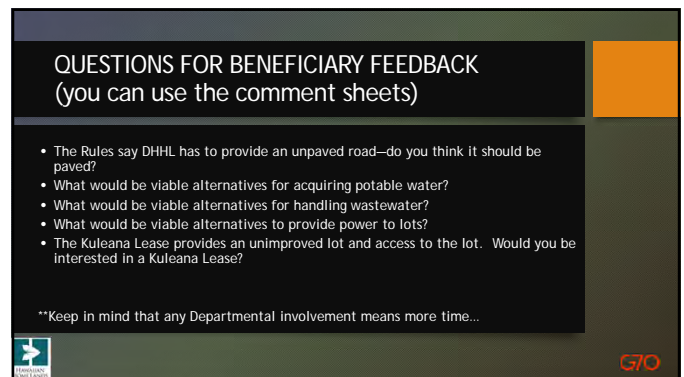
121



122



123



124

Contact:

Kawika McKeague, AICP, PIC



Barbara Natale, AICP

808-523-5866

DHHLPuuOpae@g70.design

QUESTIONS?

Pīpī a holo ka'ao...





125

Pu'u 'Ōpae

- Pu'u'Ōpaenui
- Pu'u'Ōpaeiki
- Kaunalewa ridge
- USGS calling Pu'u 'Ōpae "a remnant of a crater fill left standing in relief by differential erosion"
- Makahoa v. Makahoe - 1907 Hawaiian Annual - village and heiau - possibly Kamolehūa
- Importance to recall history through recitation of place names that (re)connect us as kanaka

Ta hoomaopopo hou ana i na moololo ma o ta hoopta ana i na inoa aina nana e hooiui ai katou i hootahi he kanaka

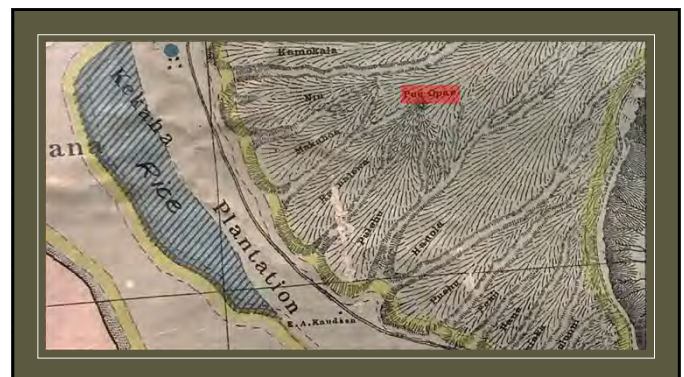


126

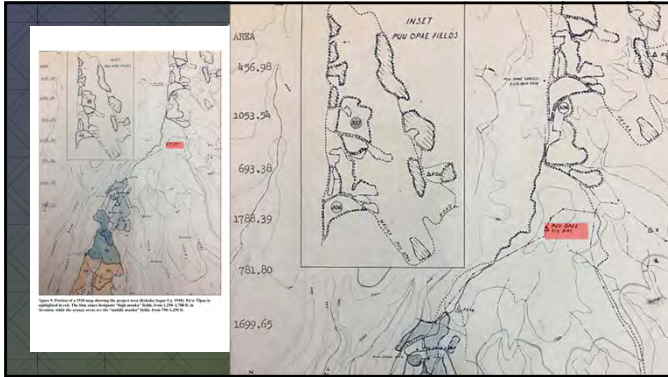
Ka Mana'o o Ka Po'e Kahiko

- E ka Wai'ula'ilihi o Waimea
- Kukui launui o Kona
- Ka 'ōhai o Kahelu
- Kau ke Kiuwai'ahulu o Waimea
- Wai nono'ula a ka ua Kapa'ahoa
- Ka ua Nounou'ili o Waimea
- Mānā, i ka pu'e kalo ho'one'ene'e a ka wai

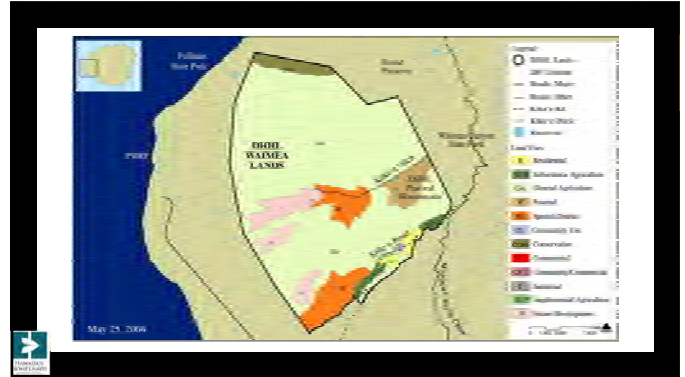
127



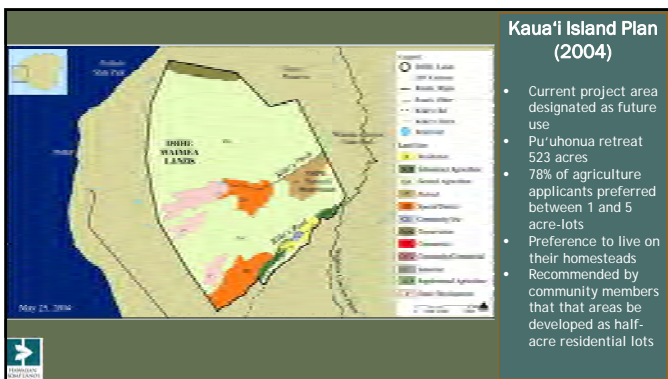
128



129



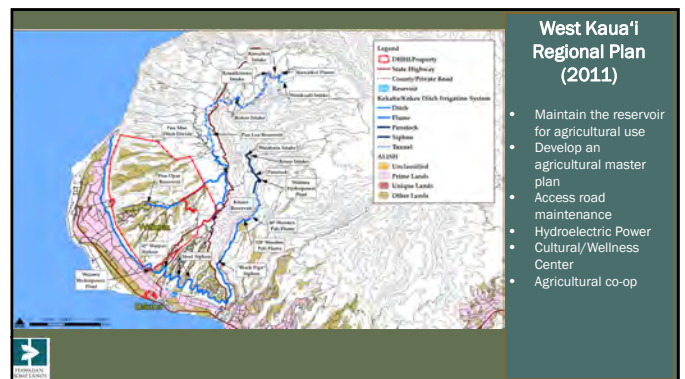
130



Kaua'i Island Plan (2004)

- Current project area designated as future use.
- Pu'uhonua retreat 523 acres
- 78% of agriculture applicants preferred between 1 and 5 acre-lots
- Preference to live on their homesteads
- Recommended by community members that that areas be developed as half-acre residential lots

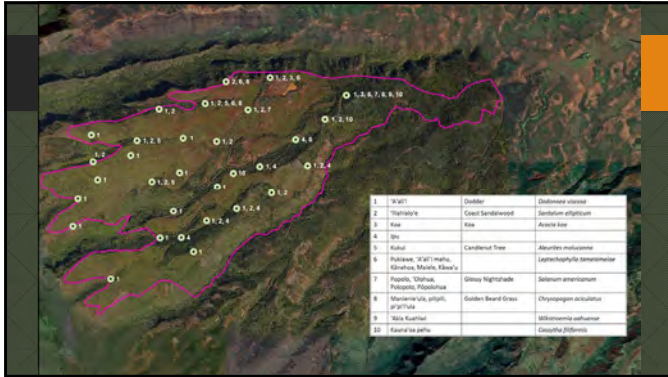
131



West Kaua'i Regional Plan (2011)

- Maintain the reservoir for agricultural use
- Develop an agricultural master plan
- Access road maintenance
- Hydroelectric Power
- Cultural/Wellness Center
- Agricultural co-op

132



137

Summarizing Results From the November 2018 Beneficiary Meeting

Houluulu Manao mai ta Halawai Nowemapa 2018

Pu'u Ōpae offers opportunity for:

He mea i hiki te holomua ma Puu Opae:

- ✓ Families to connect with the land and become more self-sufficient
Ta pilina Ohana i ta aina a hele a maa ma ta nohona
- ✓ Children to learn about traditional culture and way of life
Ao pu na kamalii i na waiwai Hawaii a nohona Hawaii

138

Summarizing Results From the November 2018 Beneficiary Meeting

Houluulu Manao mai ta Halawai Nowemapa 2018

Top 3 priorities for the Pu'u Ōpae Special Area Plan/Settlement Plan:

Na Hanana 3 Koihi no ta wahi Tuitawa ma Puu Opae:

- Awarding as many lots as possible (24%)
O ta haawi ana aku i ta nui aina ho'opulupula i hiki (24%)
- Providing an option and means to reside on the land (19%)
Ta kokua ana ma te mea hiki e noho ma ta aina (19%)
- Improving site access and safety (14%)
Te hoomaila ana ae ta hiki te tomo i ta aina me ta palekana (14%)

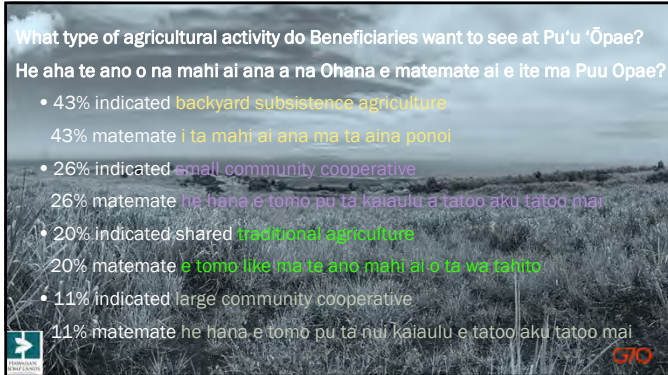

139



140

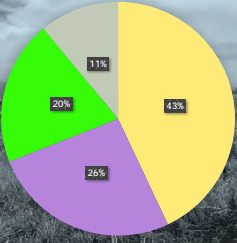
What type of agricultural activity do Beneficiaries want to see at Pu'u 'Ōpae?
He aha te ano o na mahi ai ana a na Ohana e matemate ai e ite ma Puu Opae?

- 43% indicated **backyard subsistence agriculture**
43% matemate i ta mahi ai ana ma ta aina ponoi
- 26% indicated **small community cooperative**
26% matemate he hana e tomo pu ta kaiaulu a tatoo aku tatoo mai
- 20% indicated shared **traditional agriculture**
20% matemate e tomo like i ka ta ano mahi ai e ta wa kaho
- 11% indicated **large community cooperative**
11% matemate he hana e tomo pu ta nui kaiaulu e tatoo aku tatoo mai

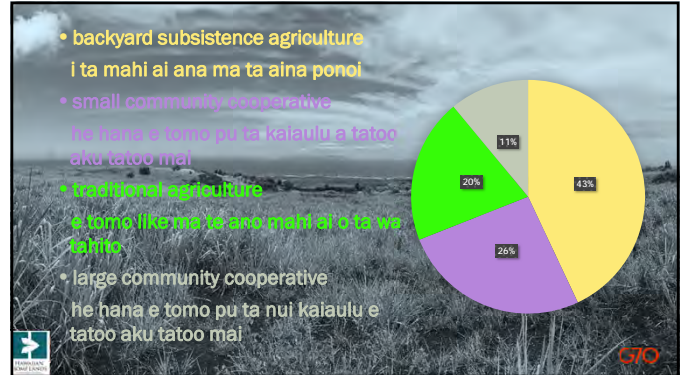




141

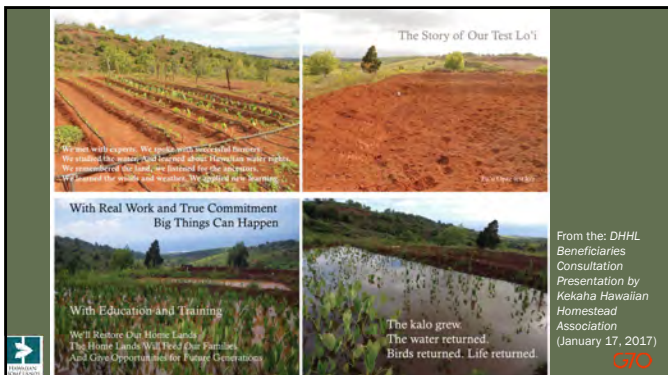
- **backyard subsistence agriculture**
i ta mahi ai ana ma ta aina ponoi
- **small community cooperative**
he hana e tomo pu ta kaiaulu a tatoo aku tatoo mai
- **traditional agriculture**
e tomo like i ka ta ano mahi ai e ta wa kaho
- **large community cooperative**
he hana e tomo pu ta nui kaiaulu e tatoo aku tatoo mai



Agricultural Activity	Percentage
backyard subsistence agriculture	43%
small community cooperative	26%
traditional agriculture	20%
large community cooperative	11%

142




The Story of Our Test Lo'i

With Real Work and True Commitment
Big Things Can Happen

With Education and Training
We'll Restore Our Home Land

The kalo grew.
The water returned.
Birds returned. Life returned.

From the: DHHL
Beneficiaries
Consultation
Presentation by
Kekaha Hawaiian
Homestead
Association
(January 17, 2017)



143