



**HAWAIIAN HOME LANDS**

HAWAIIAN HOMES COMMISSION · DEPARTMENT OF HAWAIIAN HOME LANDS

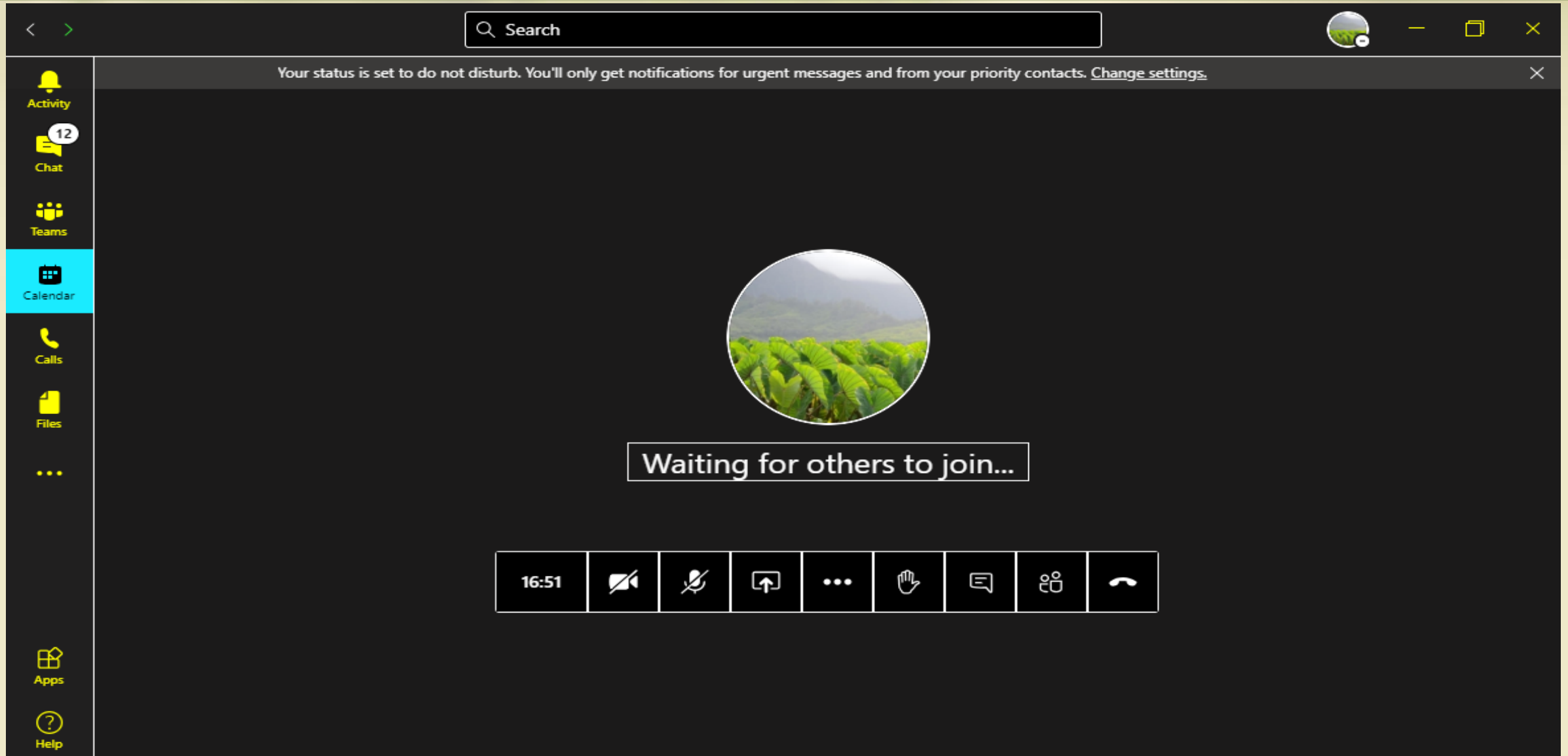
# **Beneficiary Consultation Meeting on Community Based Renewable Energy Moloka'i**

**This meeting is being recorded and will be posted on our website**

**October 29, 2020**

**The meeting will start at 6:30 p.m.**

# How to Participate in this Virtual Beneficiary Consultation Meeting



# How to Participate in this Virtual Beneficiary Consultation Meeting

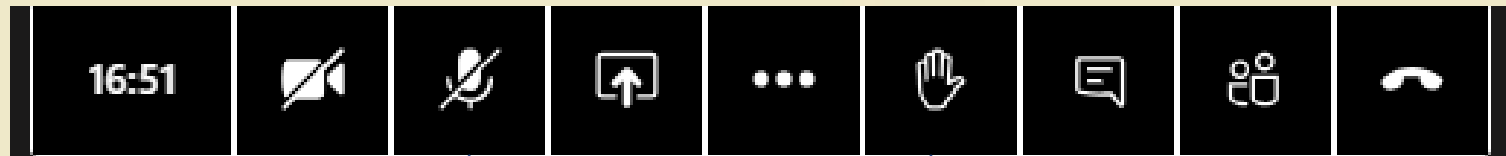
**MORE OPTIONS:** If you don't see an icon, find it here

**OPENS CHAT BOX:** Where you can type in a question or comment. Anytime.

**More Options**

**Chat**

**USER CONTROLS**



**MUTE:** All microphones should be on mute

**Mute**

**Raise Hand**

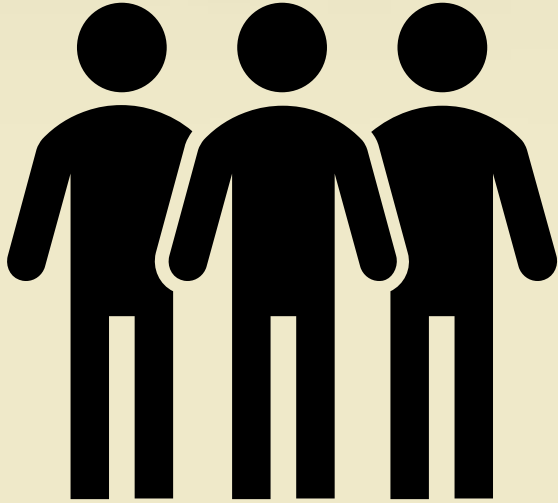
**RAISE HAND:** If you want to speak. When it's your turn, we will ask you to unmute your microphone.

# **Our Kuleana in this Meeting**

- 1. We all want to have a productive meeting.**
- 2. Be respectful of the person talking**
- 3. You can use the Chat Box anytime to ask questions or make comments. We'll go to the Chat Box first.**
- 4. If the background noise is too loud, we will mute all attendees.**
- 5. Any off topic questions will be deferred.**
- 6. Raise your hand. Wait for the facilitator to call on you.**
- 7. Agree to disagree — accept that others may have different perspectives and opinions.**
- 8. Have an open mindset --leave the meeting with at least one new idea or piece of information.**

# PURPOSE FOR TONIGHT'S MEETING

---



900 Beneficiaries Invited

--Moloka'i Lessees

--Applicants residing on Moloka'i

- Learn about HECO's Community Based Renewable Energy Program
- Explore if it's a good fit for a Moloka'i site

# AGENDA

## Introduction

### Part I: Provide Information

1. Why is DHHL Interested in Developing Renewable Energy?
2. Benefits to the Homestead Community and DHHL Trust
  - 2019 Regional Plan Priority Projects
3. HECO's "Community Based Renewable Energy" Program
4. Are there opportunities for renewable energy for DHHL on Moloka'i?
5. IF a proposal is received—the Process

### Part II: Answer Questions and Discuss Community Benefits

# Why is DHHL Interested in Developing Renewable Energy?

- **DHHL's Energy Policy: Ho'omalūō**
  - Native Hawaiians should lead efforts in energy self-sufficiency
  - Identify DHHL lands with renewable energy development potential
- In 2015, Gov. Ige signed into law, the requirement that utilities have to produce 100% of their electricity sales from renewable energy resources by 2045. This creates the need and demand for renewable energy.
- Renewable Energy development on HHLs can generate revenue to develop new homesteads; community benefits go directly to the homestead community

# **Benefits to the Homestead Community and DHHL Trust**

- Potential for lower electric bills through different programs**
- Reduce costs for DHHL's water system**
- Generates revenue for lot development**
- Potential to Implement Moloka'i Regional Plan Priorities**

# Moloka'i Regional Plan Priorities

- 'Ualapu'e Kuleana Homestead Project and Cultural Resource Management Plan
- Ho'olehua Hale Improvements
- Water Rate Assessment and Legal Analysis of Beneficiary Rights Regarding Potable Water Rate Disparities
- Shared Farm Equipment for Agricultural Lessees
- Road Improvements





**Hawaiian  
Electric**

Mahina Martin

Mark Wong

Ka'iulani Shinsato

Greg Shimokawa

Rebecca Dayhuff Matsushima

*Aloha*

[www.hawaiianelectric.com](http://www.hawaiianelectric.com)



**Hawaiian  
Electric**

Moving toward more renewable energy will reduce our carbon footprint, reduce our reliance on fossil fuel and produce electricity in a way that uses our local, natural resources

## **COMMUNITY BASED RENEWABLE ENERGY PROGRAM**

- Proposed program pending approval by the Public Utilities Commission (PUC)
- Also known as community solar
- Uses a Request for Proposals process to offer opportunity across the five islands we serve

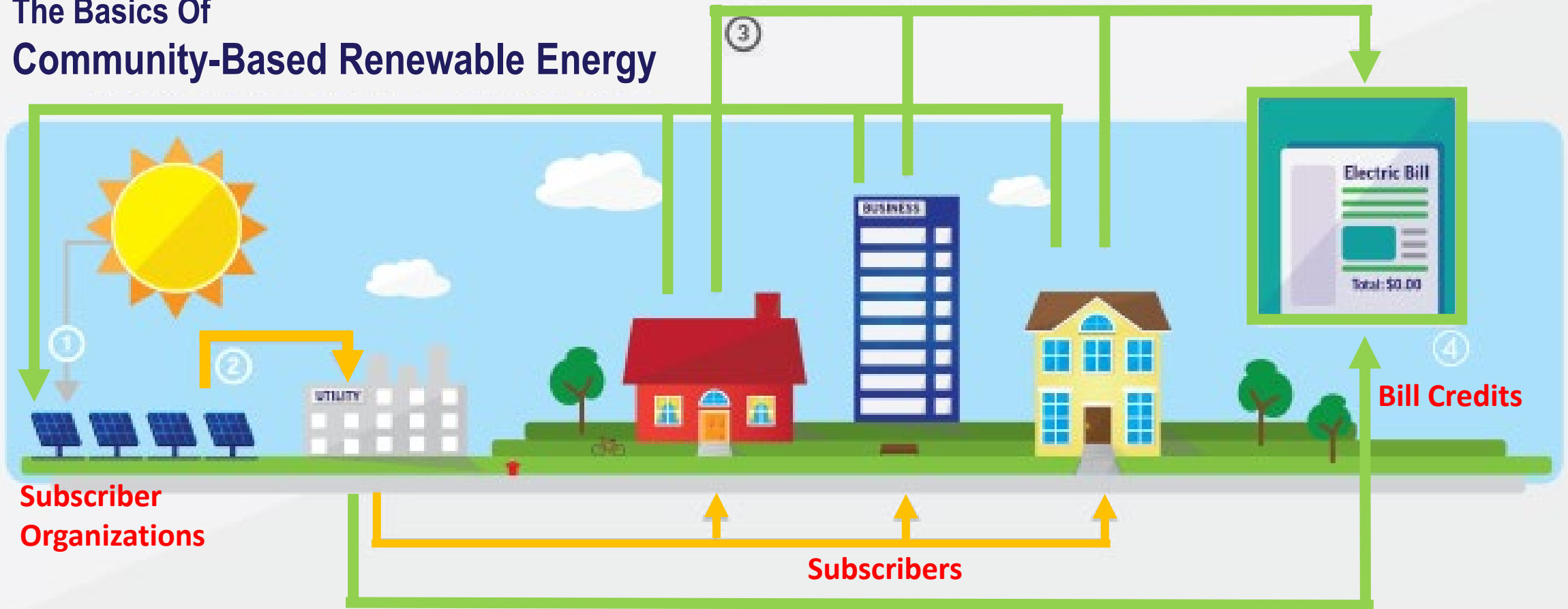


**Hawaiian  
Electric**

# Community Based Renewable Energy Program (CBRE)

# What is CBRE?

## The Basics Of Community-Based Renewable Energy



CONFIDENTIAL – LIMITED DISTRIBUTION

Money  
Energy



Hawaiian  
Electric

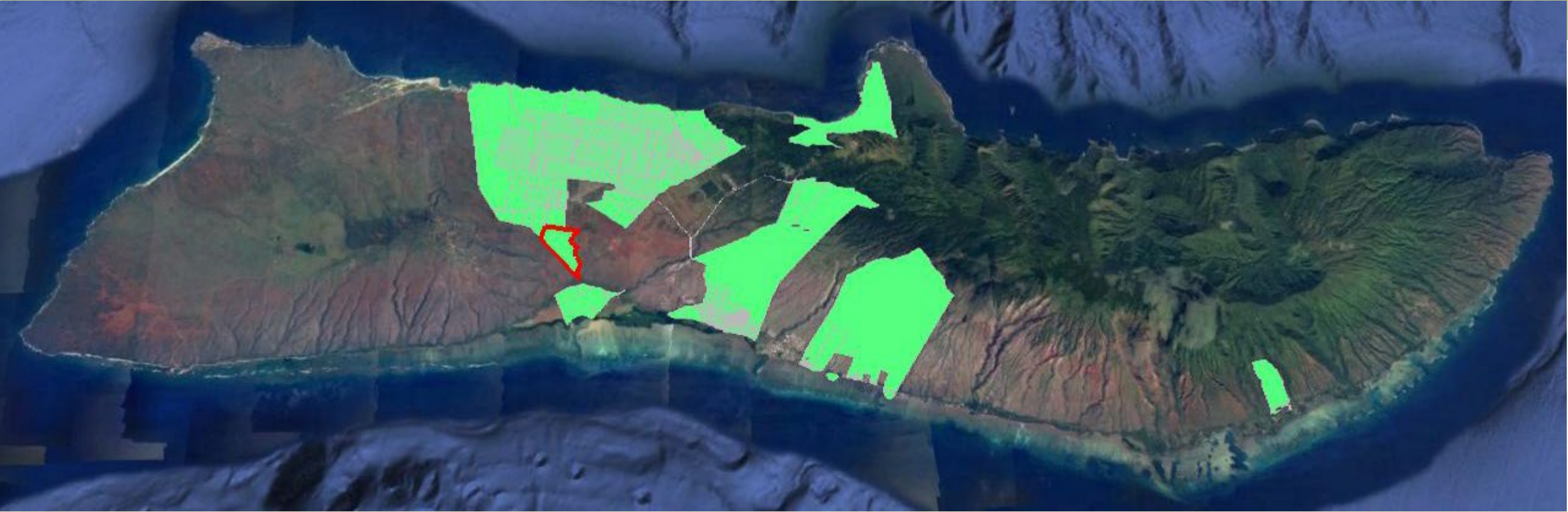
*Mahalo*

[www.hawaiianelectric.com](http://www.hawaiianelectric.com)



# **Are there opportunities for Renewable Energy for DHHL on Moloka'i?**

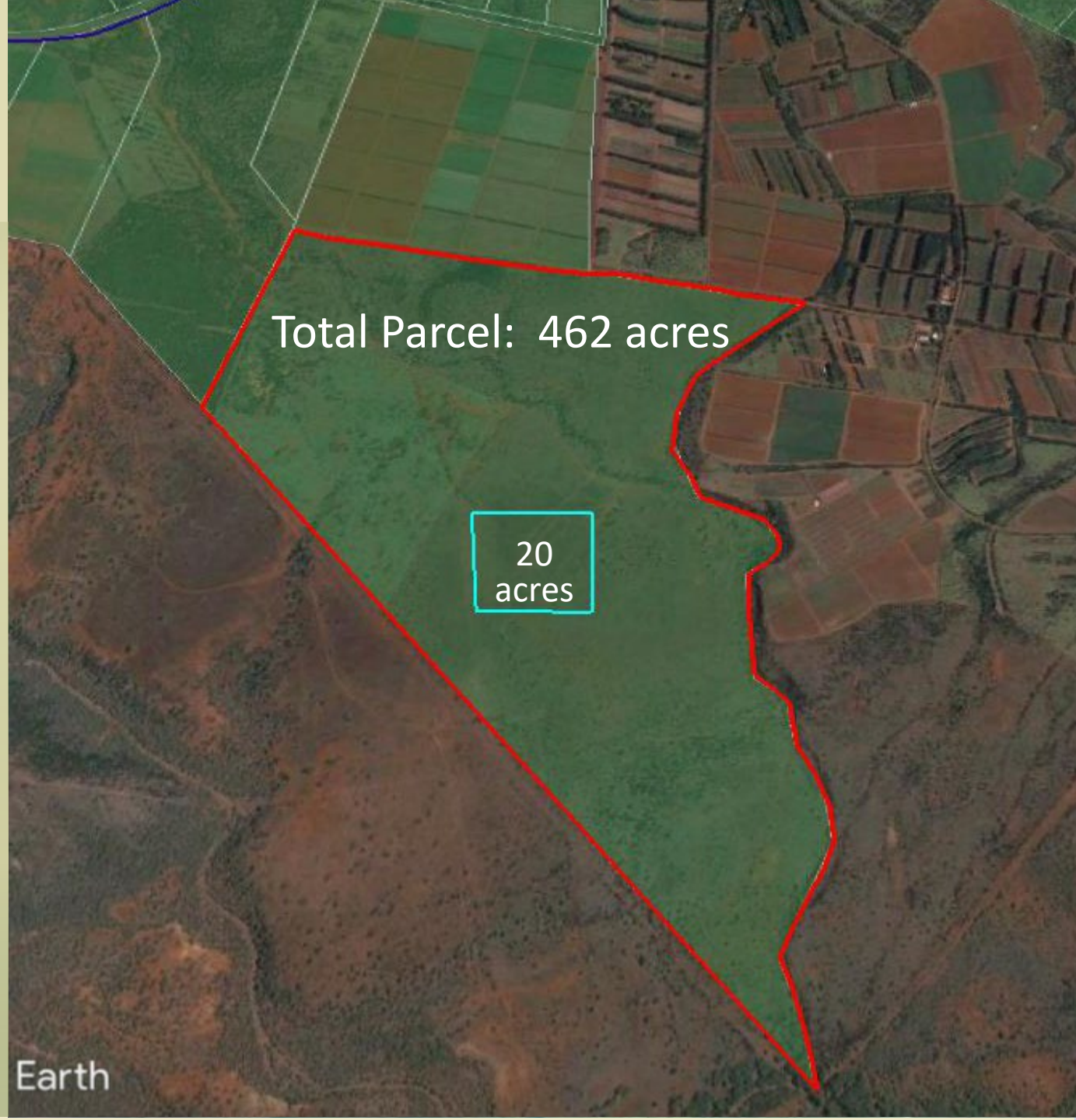
# Hawaiian Home Lands on Molokaʻi



August 31, 2020

## Published a Solicitation for Renewable Energy Projects

- 4 parcels (O'ahu, Big Island, Moloka'i)
  - Moloka'i parcel in Ho'olehua:  
TMK 5-2-001:004 (red outline)
  - Total acres: 462
  - Project area: up to 20 acres
  - Renewable Energy Cap: 2.75 MW
- 
- South facing exposure
  - High level of direct solar radiation
  - Access to existing transmission lines
  - A solar project could be constructed on lands designated General Agriculture

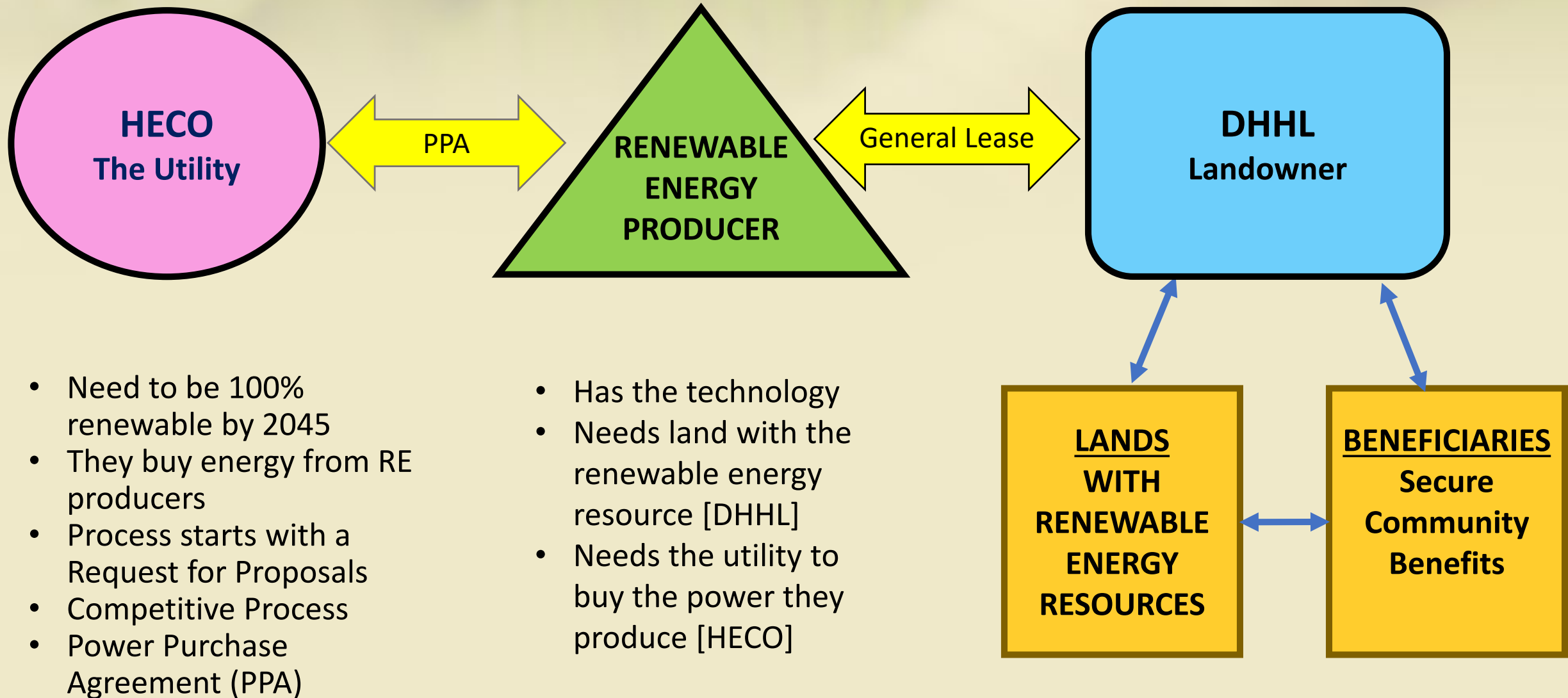


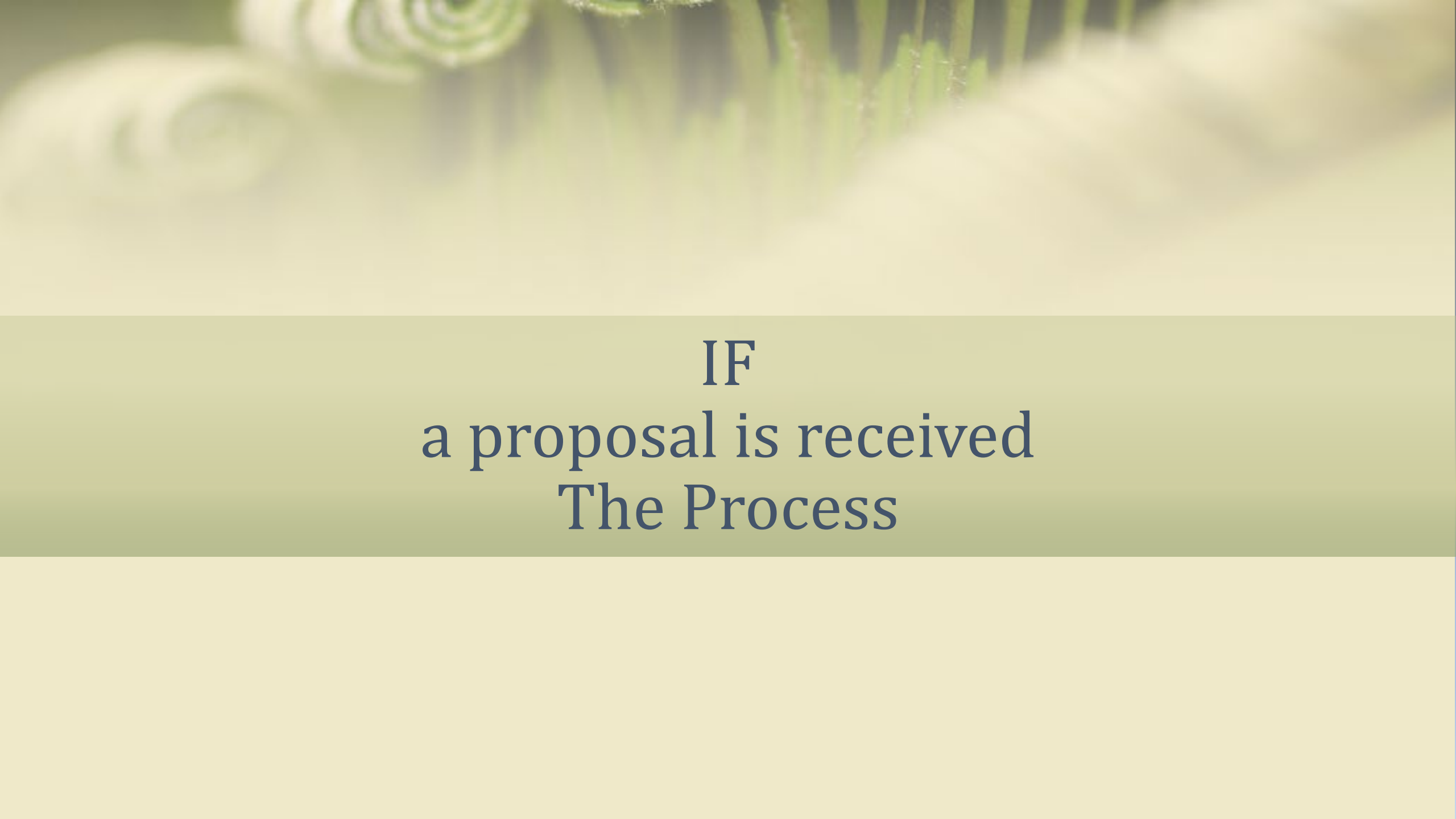
Total Parcel: 462 acres

20  
acres

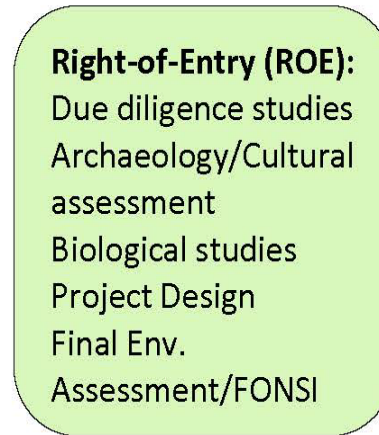
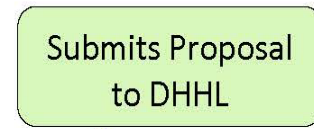
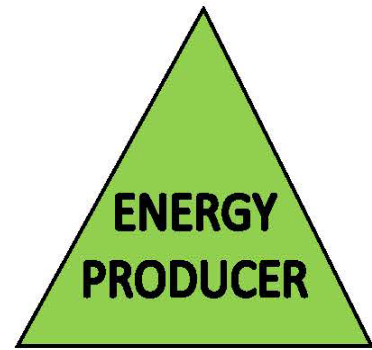
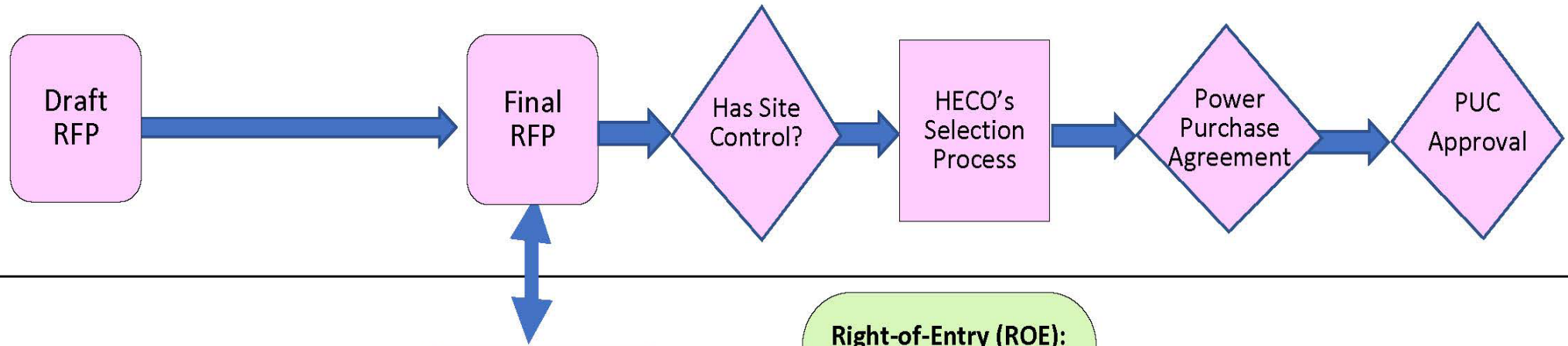
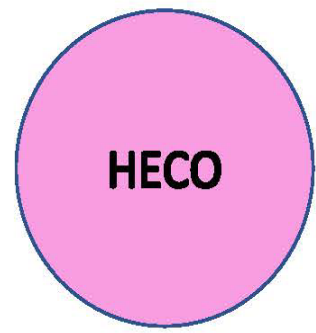
Earth

# DHHL's Opportunity to Develop Renewable Energy Projects





IF  
a proposal is received  
The Process



# Discussion



## Questions on the Presentation?

Questions on the Process?

Questions about the Site?

Questions about HECO's CBRE Program



## Input on how the Project could benefit your homestead community

- How can the project help individual homesteaders?
- How can the project help homestead associations?
- What kind of projects could benefit the homestead community?
- What Regional Plan Priority Projects would you like to see supported by the Renewable Energy project?

# More Information, More Questions?

1. **MORE INFORMATION** on our website at:  
<https://dhhl.hawaii.gov/po/molokai/potential-renewable-energy-plan-on-molokai/>
  - Powerpoint, recording of the meeting
  - Meeting Notes with responses to questions in chat box.
  
2. **ADDITIONAL QUESTIONS AND COMMENTS:**
  - You're welcome to send us your questions
  - Direct the subject to: "Moloka'i Renewable Energy Project"
    - Send Email to the Planning Office at: [DHHL.Planning@hawaii.gov](mailto:DHHL.Planning@hawaii.gov)
    - OR mail your questions/comments to:  
DHHL Planning Office  
P.O. Box 1879  
Honolulu, HI 96805