



HAWAIIAN HOME LANDS

HAWAIIAN HOMES COMMISSION  
DEPARTMENT OF HAWAIIAN HOME LANDS

# KAUAI ISLAND

## Project Updates

JOINT  
PLANNING OFFICE  
LAND DEVELOPMENT DIVISION  
Item E-1 Workshop  
November 16, 2020



Legend

- DHHL Property
- Existing County Water Tank
- Existing Waterline
- Ditches
- Streams
- Reservoirs
- Piilani Mai Ke Kai

46 Farm Lots

Anahola Farm Ph 1

Anahola Farm Ph 2

31 Bayview

Residence Lots

Existing  
Water  
Tank

DHHL – USDA RD

Anahola

# Anahola Farm Lots Water System Improvements

Kaneha  
Reservoir

Mimino  
Reservoir

Field 1 Kealia  
Reservoir

Field 2 Kealia  
Reservoir

Upper Anahola  
Reservoir

Lower Anahola  
Reservoir

0 1,500 3,000 6,000 Feet



# FUNDS AWARDED BY USDA RD

(Accepted by HHC, Nov. 2018)

## USDA 2016 FUNDING PACKAGE

DHHL CONTRIBUTION	\$3,770,723
USDA GRANT	<u>\$3,055,137</u>
SUBTOTAL	\$6,825,860

## USDA 2018 FUNDING PACKAGE ADDS:

USDA LOAN	\$4,100,000
USDA GRANT	<u>\$1,999,946</u>
SUBTOTAL	\$6,099,946

GRAND TOTAL      \$12,955,806



# ANAHOLA FARM LOTS WATER SYSTEM IMPROVEMENTS

Phase 1:

Kaiwa Construction: \$3,196,408

- Replacement of transmission and distribution lines
- Improvement of pressure in mauka and makai lots
- Upgrades to meters and backflow preventers
- Upgrades to fire protection

Construction commencement: Feb. 2020

Expenditure to Date: est \$1.2M

Completion of Phase 1: est. May 2021



# ANAHOLA FARM LOTS WATER SYSTEM IMPROVEMENTS

## Phase 2:

Kiewit Infrastructure West Co.: \$ 6,692,786

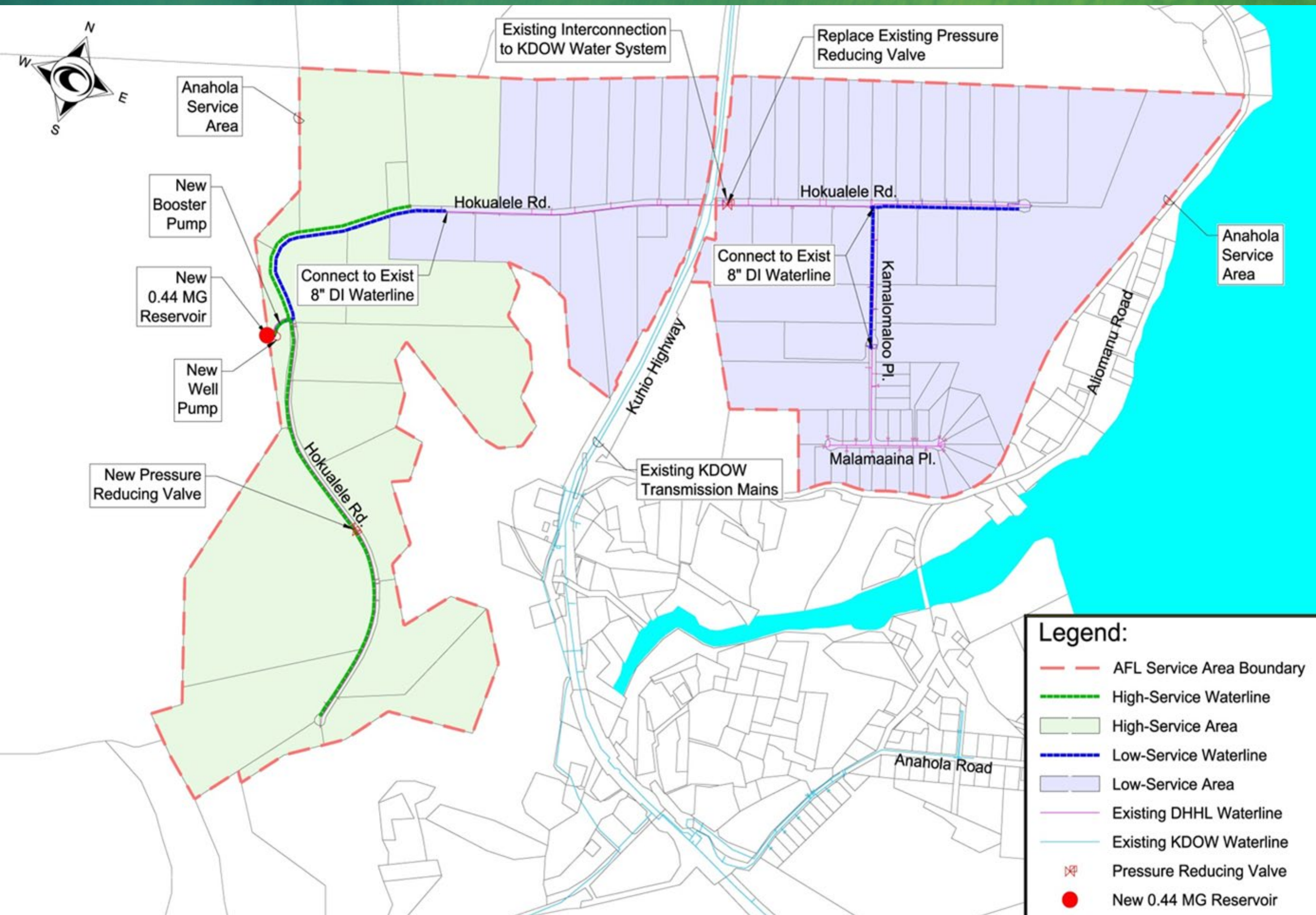
- New concrete water tank
- Pump station upgrades

Construction commencement: Dec. 2020

Expenditure to Date: None

Completion of Phase 2: est. May 2021





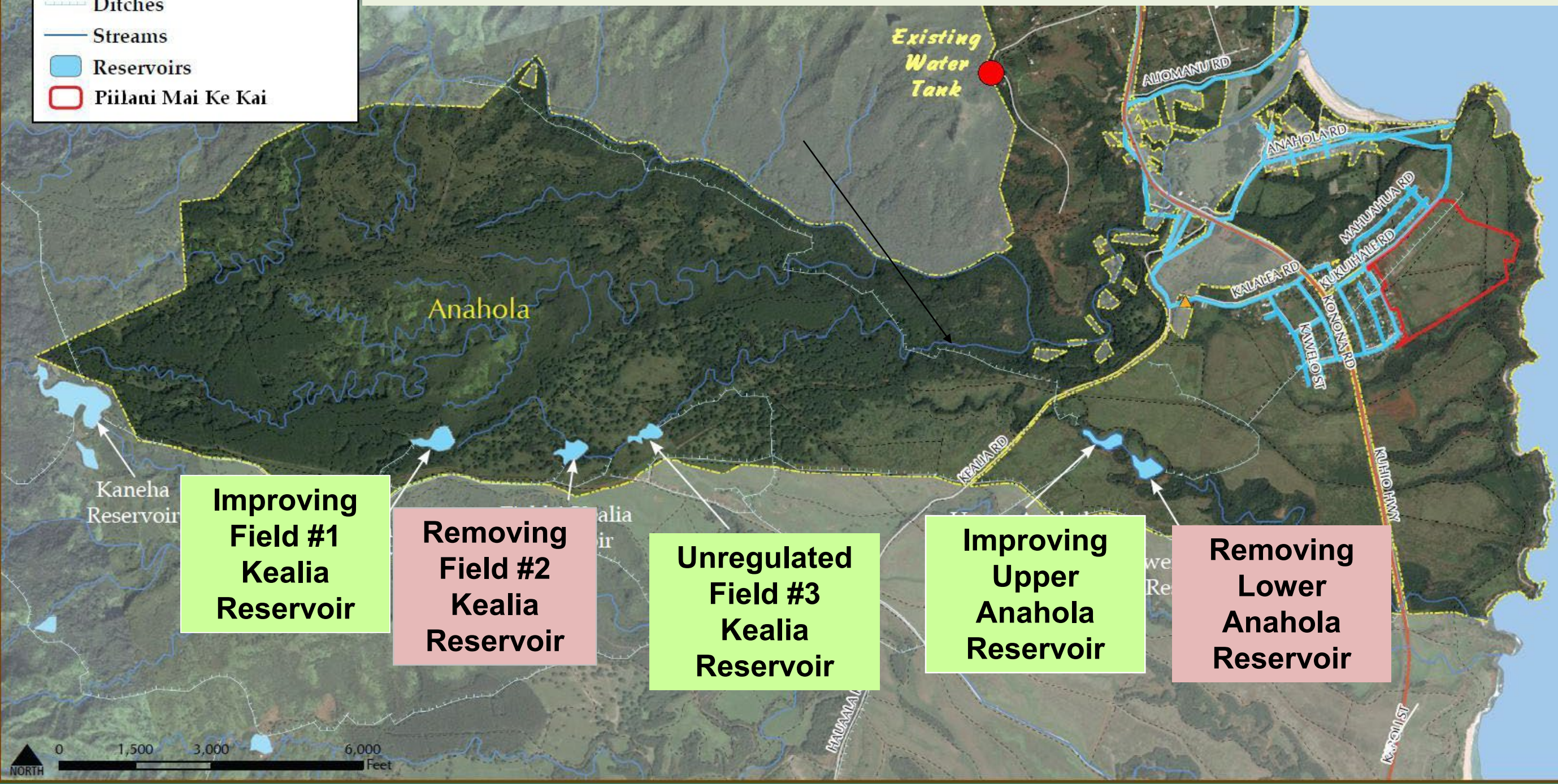


# Anahola Dam & Reservoir Improvements

- \$3.0 Million Legislative Appropriation for Dam Improvements
- New design engineer procured in early 2019
- Demolition of Field #2 and Lower Anahola completed Nov. 2020

## Legend

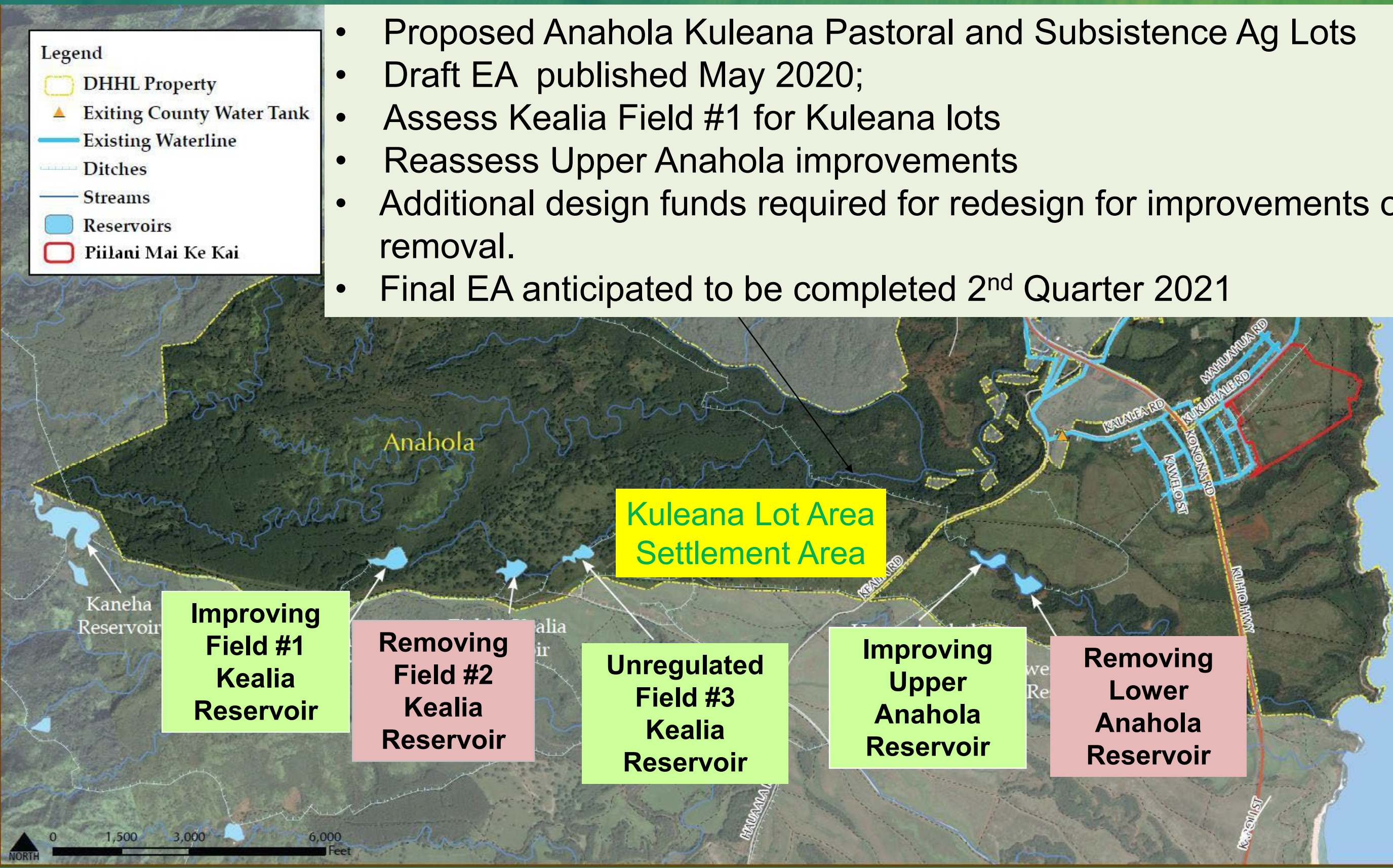
- DHHL Property
- ▲ Existing County Water Tank
- Existing Waterline
- - - Ditches
- Streams
- Reservoirs
- Piilani Mai Ke Kai



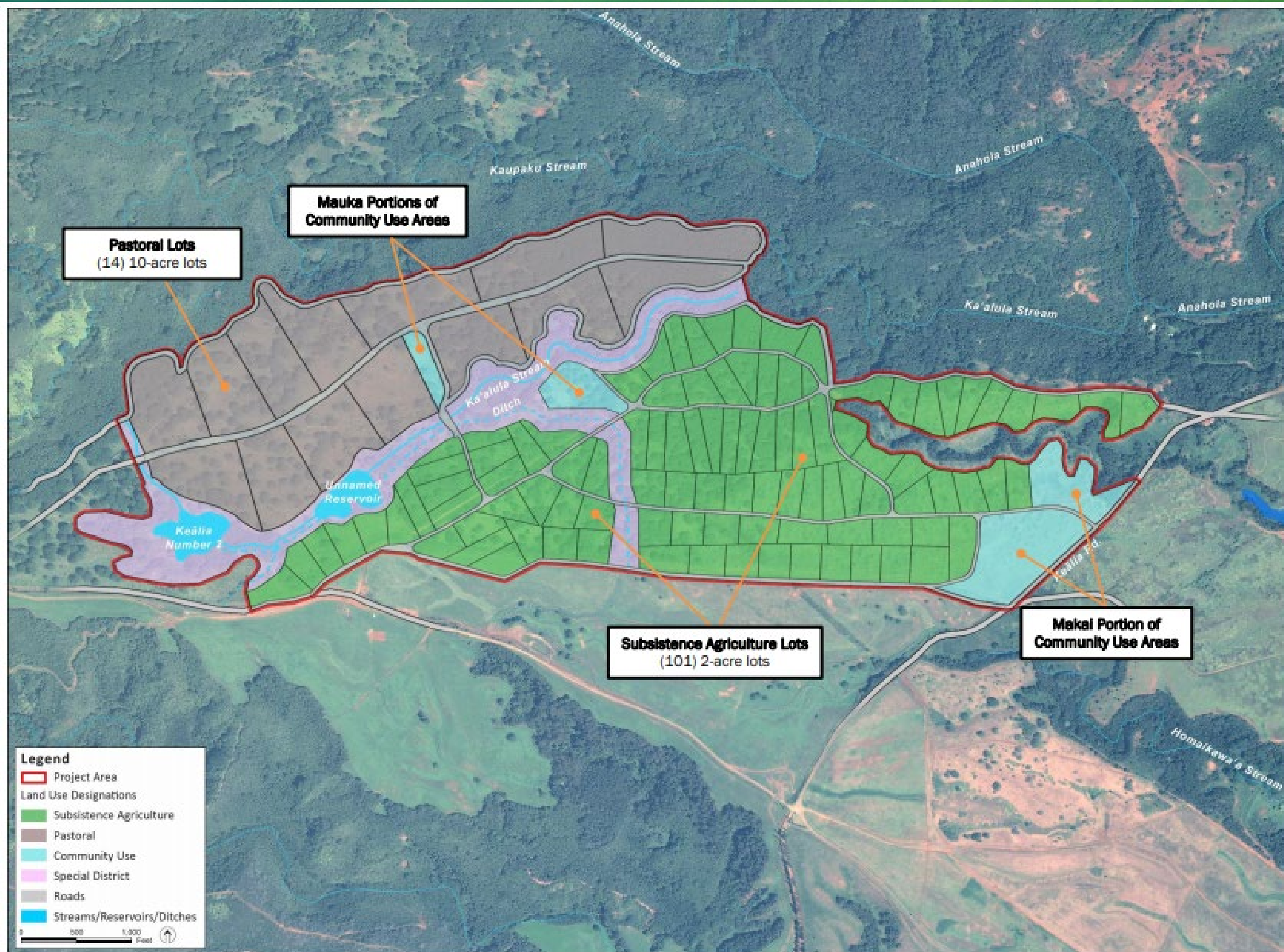


# Anahola Kuleana Lot Settlement Plan

- Proposed Anahola Kuleana Pastoral and Subsistence Ag Lots
- Draft EA published May 2020;
- Assess Kealia Field #1 for Kuleana lots
- Reassess Upper Anahola improvements
- Additional design funds required for redesign for improvements or removal.
- Final EA anticipated to be completed 2<sup>nd</sup> Quarter 2021









*Pi'ilani Mai Ke Kai*  
*Subdivision*  
Total 171 Lots

Phase 1: 80 Lots

Phase 2: 51 Lots

Phase 3: 40 Lots

Kukuihale Road

Kanuikapono Charter  
School

Kuhio Highway

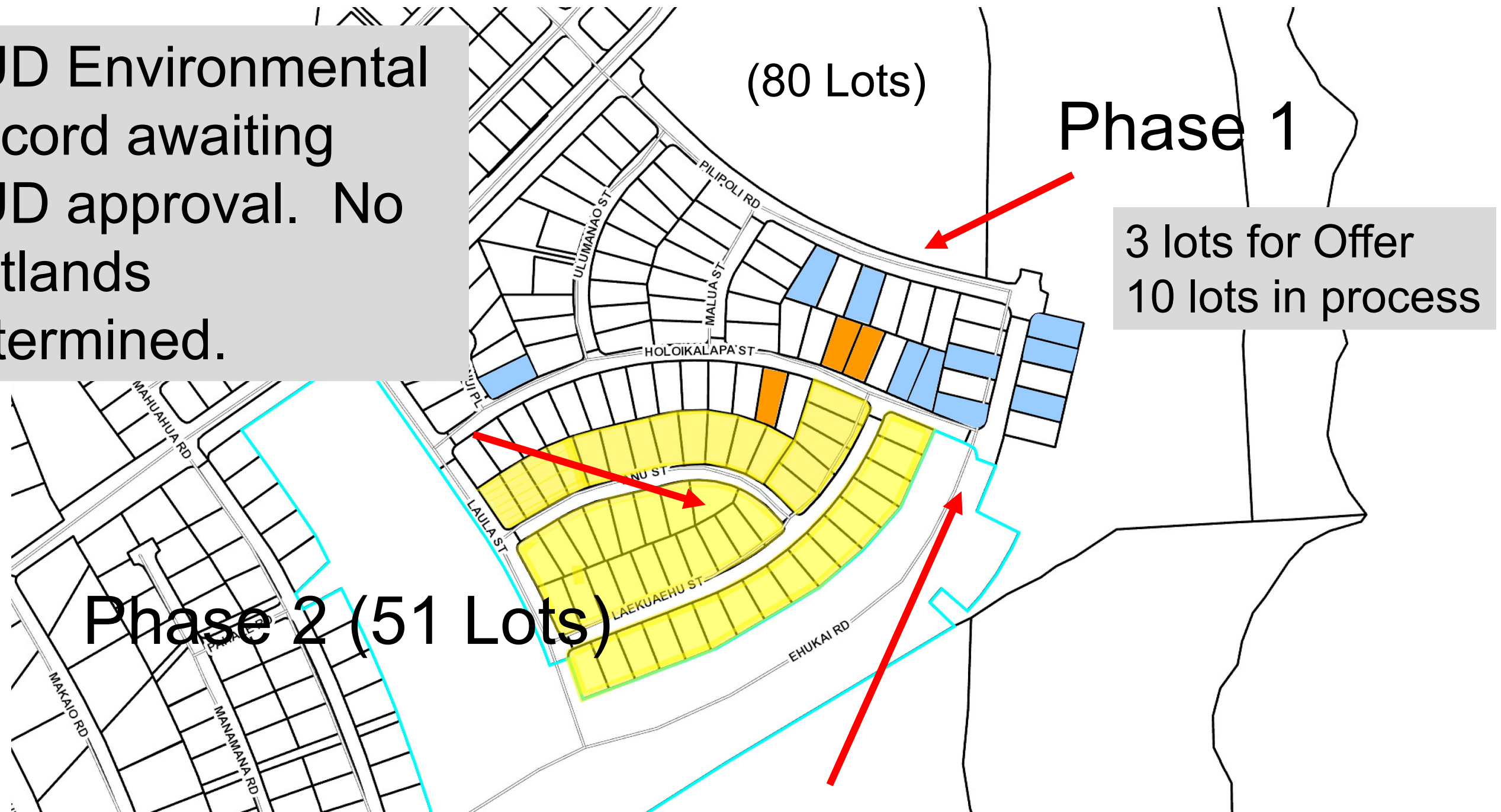
*Anahola, Kauai*



# Lot Assessment, Preparation for award & Offering in Progress

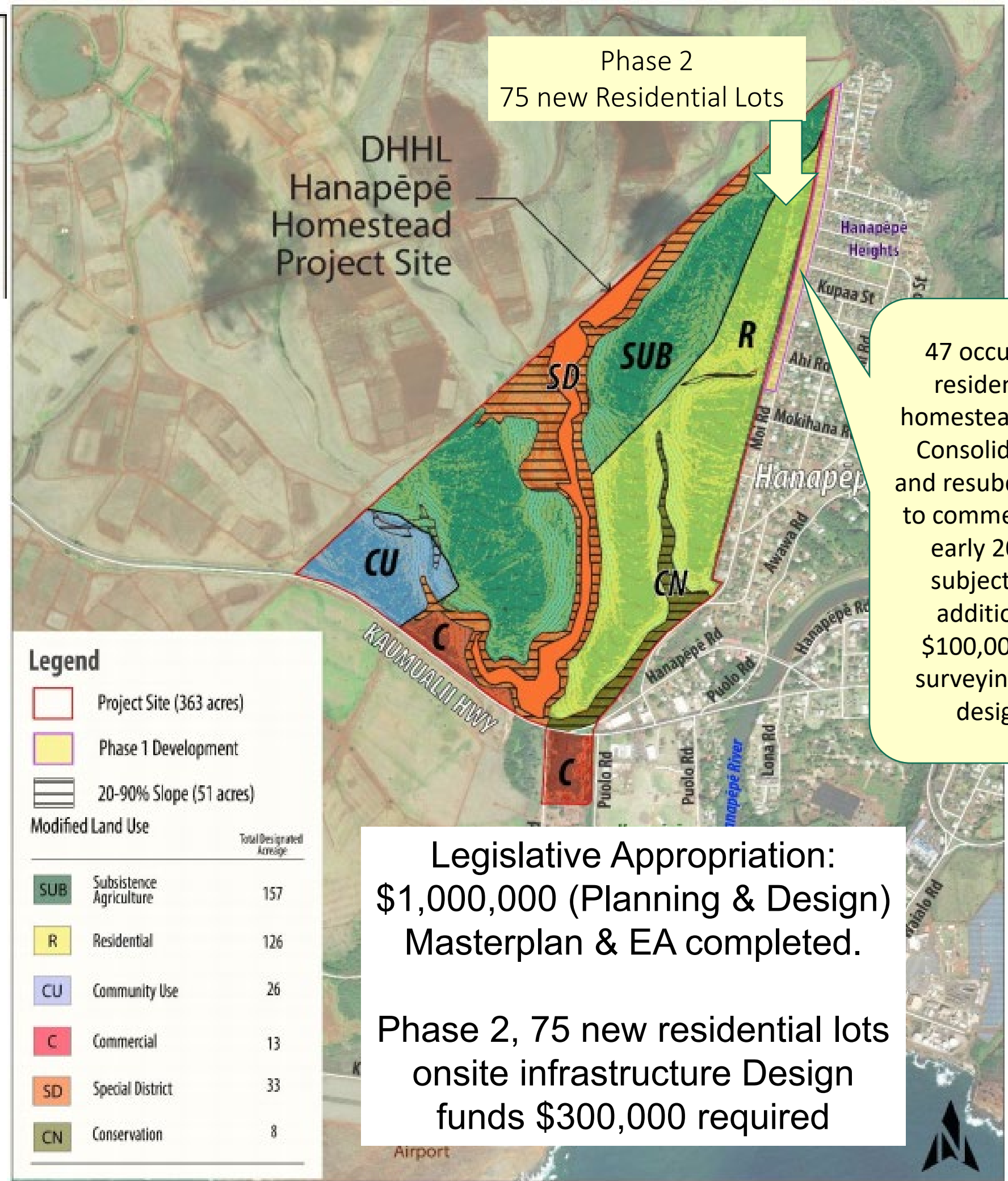
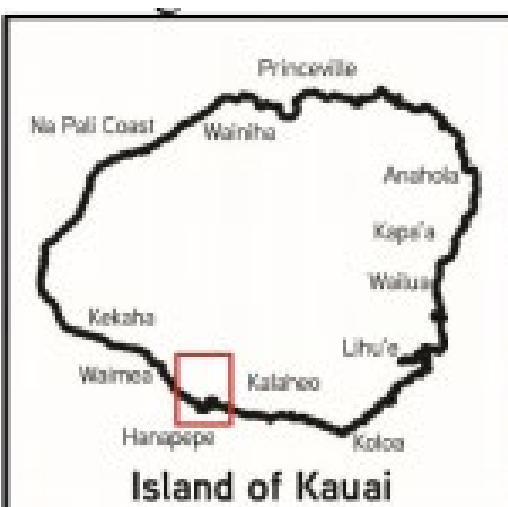
(Anahola – Piilani Mai Ke Kai Phases 1 & 2)

HUD Environmental  
Record awaiting  
HUD approval. No  
wetlands  
determined.



Phase 3 – Planned lots and roadway is impacted by  
“wetlands determination” per USFAW





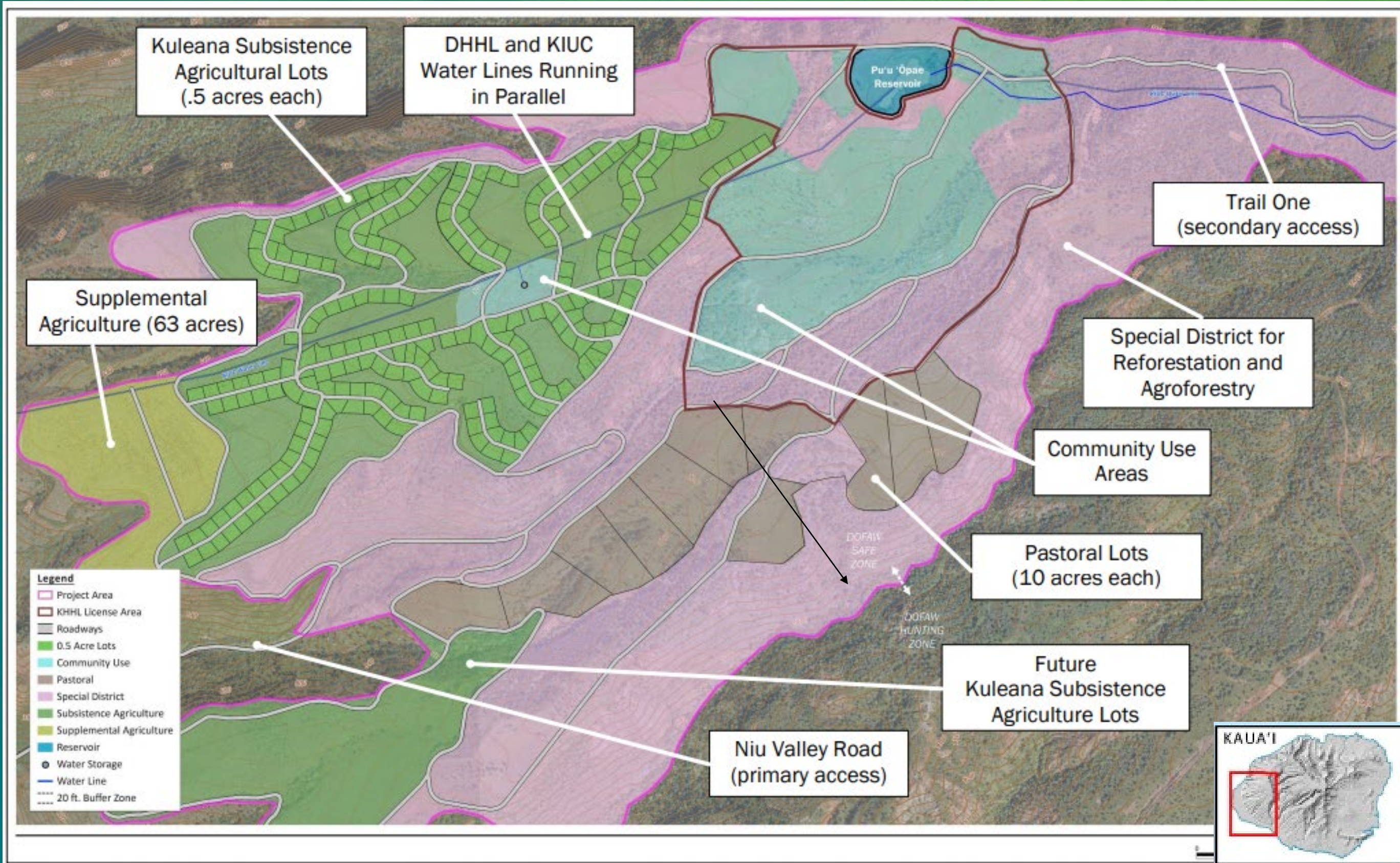
47 occupied residential homestead lots. Consolidation and resubdivision to commence in early 2020, subject to . additional \$100,000 for surveying and design

Legislative Appropriation: \$1,000,000 (Planning & Design) Masterplan & EA completed.

Phase 2, 75 new residential lots onsite infrastructure Design funds \$300,000 required

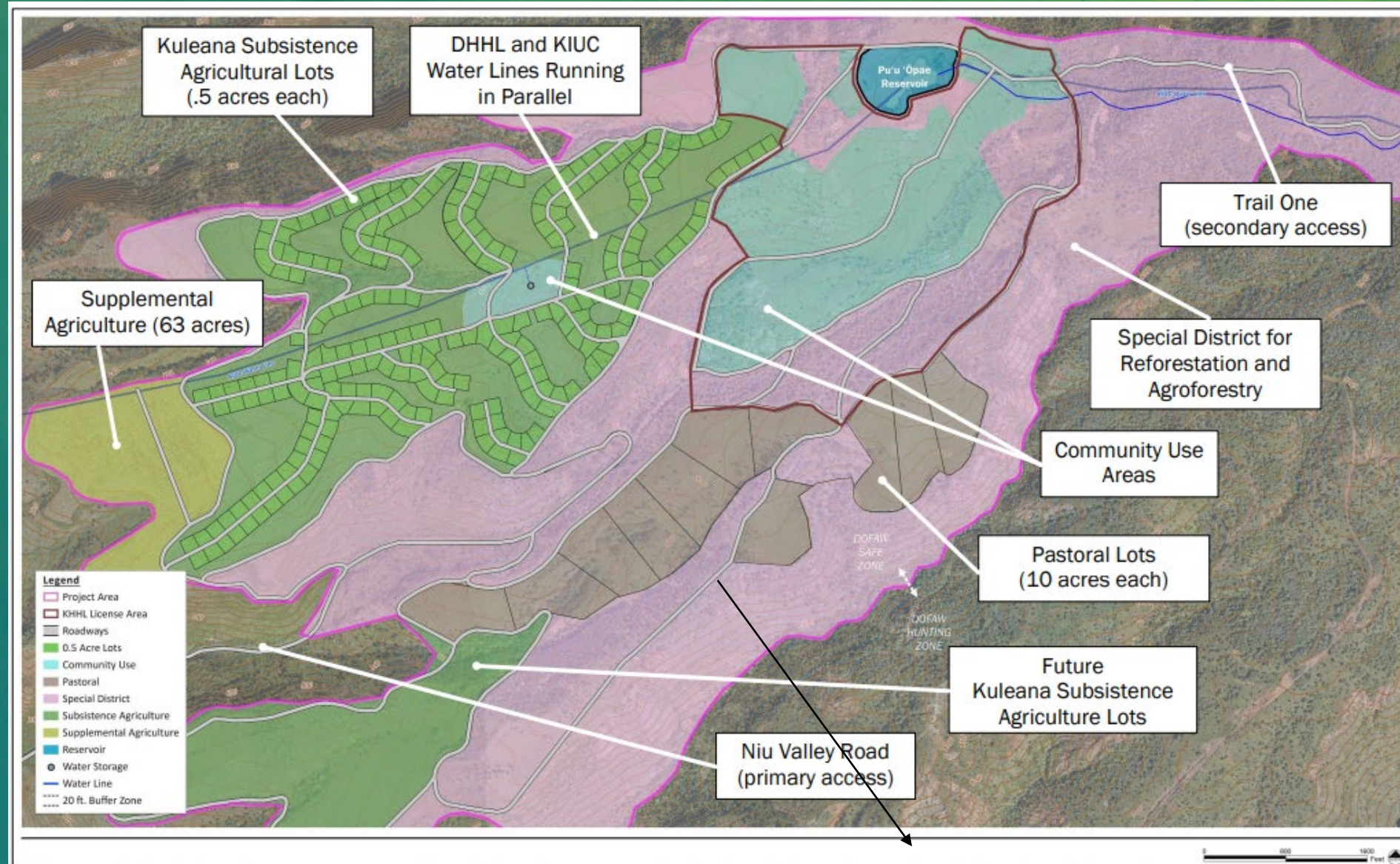


# Pu'u 'Ōpae Kuleana Homestead Lots





# Pu'u 'Ōpae Kuleana Homestead Lots



- Final EA approved by the HHC in July 2020
- KIUC has agreement with DHHL to make following improvements:
  - Ditch and transmission line improvements
  - Repair 3 existing reservoirs
  - Roadway improvements
- KIUC currently going through HRS 343 EA process