



HAWAIIAN HOME LANDS

HAWAIIAN HOMES COMMISSION • DEPARTMENT OF HAWAIIAN HOME LANDS

**C-4**

**FORMERLY USED DEFENSE SITES (FUDS) ON HAWAIIAN HOME  
LANDS: WAIKALOA MANEUVER AREA**

JANUARY 19-20 2021



- Recognize**  
Retreat  
Report

Abandon when you may have encountered a munition.  
Do not touch, move or disturb it,  
but carefully leave the area you entered.

Call 911 immediately notify law  
enforcement of what you saw and where it was.

# Former Waikoloa Maneuver Area

## Formerly Used Defense Site

**US Army Corps  
of Engineers  
Honolulu District**

(as of June 22, 2019)

**Map Labels:**

  - Kaunakakai Harbor
  - Mauka Key Bore
  - Hāpuna Beach, Pelican Point
  - Waimānā
  - Waimānā Kōhala Airport
  - Pu'u Pa Maneuver Area
  - Excluded Under the FUDS Program
  - Response Action Being Conducted by U.S. Army Garrison

**Legend**

  - Former Waikoloa Maneuver Area Boundary
  - Cleared Area
  - Exception Area
  - Former Waikoloa Maneuver Area - Sectors and Areas Boundaries
  - Vegetation
  - Water
  - Densely Built-Up Area
  - Cinder Pit
  - Topographic Contour
  - Munition and Explosive of Concern Item
  - Munition and Explosive of Concern Item Discovered During U.S. Army Garrison RUPF
  - Munition and Explosive of Concern Item Discovered During EIC/CA and RIF-S

**Map Labels:**

  - Kaunakakai Harbor
  - Mauka Key Bore
  - Hāpuna Beach, Pelican Point
  - Waimānā
  - Waimānā Kōhala Airport
  - Pu'u Pa Maneuver Area
  - Excluded Under the FUDS Program
  - Response Action Being Conducted by U.S. Army Garrison

**Legend**

  - Former Waikoloa Maneuver Area Boundary
  - Cleared Area
  - Exception Area
  - Former Waikoloa Maneuver Area - Sectors and Areas Boundaries
  - Vegetation
  - Water
  - Densely Built-Up Area
  - Cinder Pit
  - Topographic Contour
  - Munition and Explosive of Concern Item
  - Munition and Explosive of Concern Item Discovered During U.S. Army Garrison RUPF
  - Munition and Explosive of Concern Item Discovered During EIC/CA and RIF-S

**Map Labels:**

  - Kaunakakai Harbor
  - Mauka Key Bore
  - Hāpuna Beach, Pelican Point
  - Waimānā
  - Waimānā Kōhala Airport
  - Pu'u Pa Maneuver Area
  - Excluded Under the FUDS Program
  - Response Action Being Conducted by U.S. Army Garrison

**Legend**

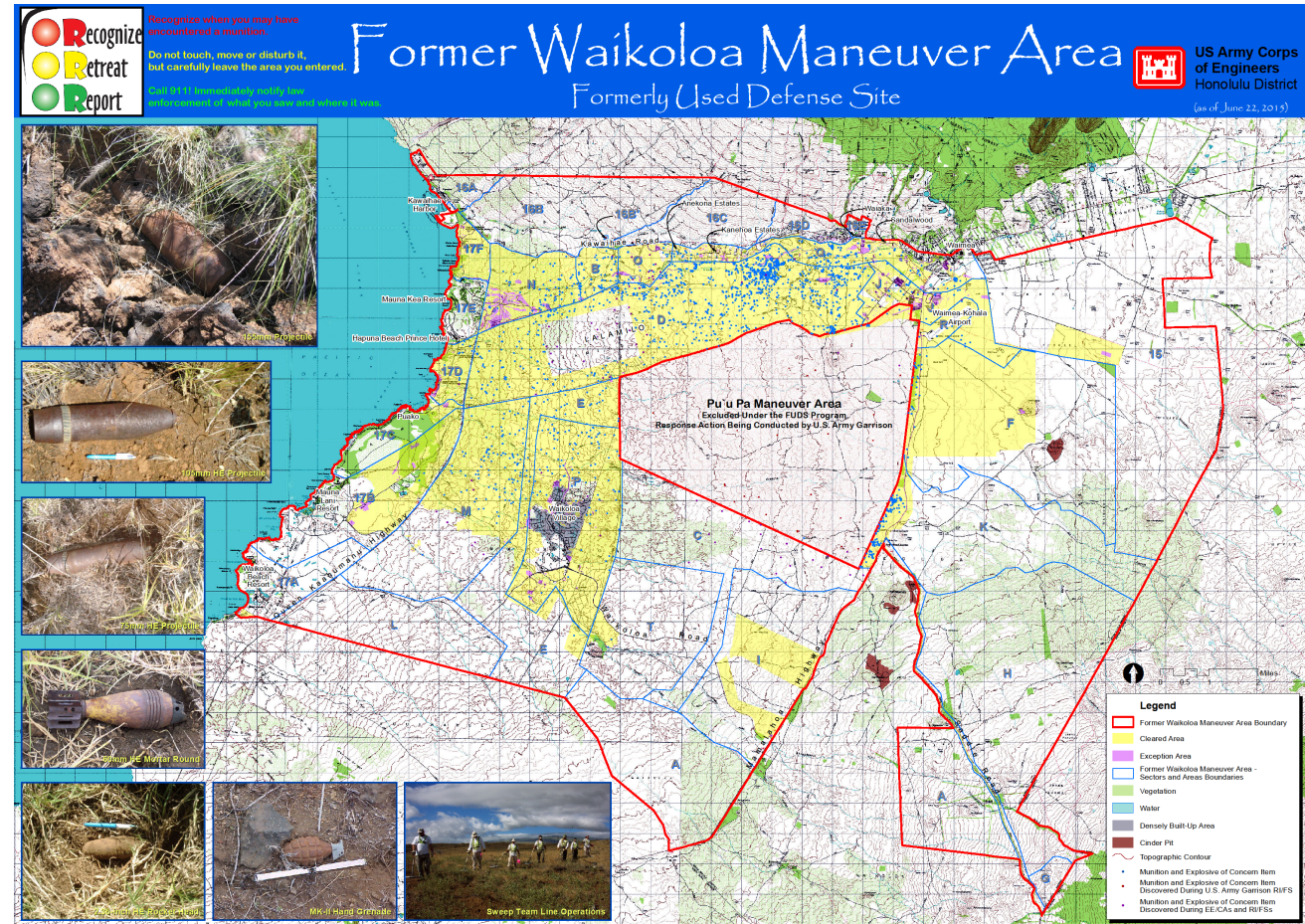
  - Former Waikoloa Maneuver Area Boundary
  - Cleared Area
  - Exception Area
  - Former Waikoloa Maneuver Area - Sectors and Areas Boundaries
  - Vegetation
  - Water
  - Densely Built-Up Area
  - Cinder Pit
  - Topographic Contour
  - Munition and Explosive of Concern Item
  - Munition and Explosive of Concern Item Discovered During U.S. Army Garrison RUPF
  - Munition and Explosive of Concern Item Discovered During EIC/CA and RIF-S





# Former Waikoloa Maneuver Area

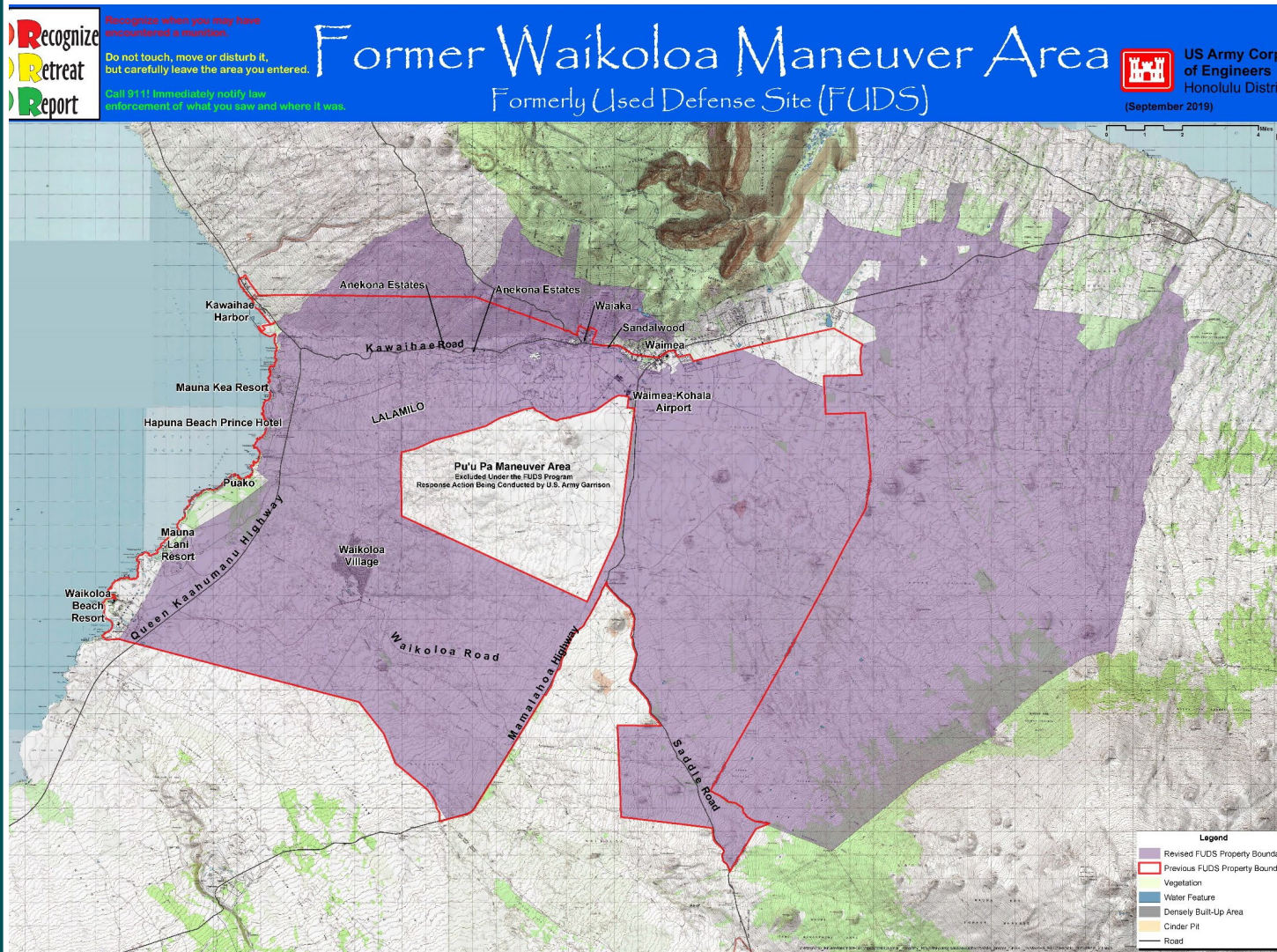
- The current estimated cost to complete investigation, clean-up and long-term monitoring is \$723 million.
- Currently two Indefinite Delivery Indefinite Quantity (IDIQ) contracts are accomplishing investigation and clean-up.
  - One contract is for \$70 million and the other contract for \$30 million, both over 5 years.
  - These contracts expired in 2014, the Contractor continues to finish reports. A new contract is being prepared for award to continue remediation work.
  - Also, in accordance with the Comprehensive Environmental Response, Compensation and Liability Act, Remedial Investigation/Feasibility Studies have started that will characterize and assess the nature and extent of the contamination at the Former Waikoloa Maneuver Area.
- Community outreach efforts are done with community associations, schools and at community events.
  - Safety and ordinance knowledge are the primary messages.
  - The 3Rs of Unexploded Ordnance (UXO) Safety, Recognize, Retreat and Report, is emphasized and used as the message for UXO safety education.







# Former Waikoloa Maneuver Area



- Draft of proposed expansion based on new lease documentation showing the US military had the lease(s) for the additional acreage.
- Under the Defense Environmental Restoration Program (DERP), any time new documentation comes up for a FUDS site, the map is expanded (despite the lack of evidence of actual military use).
- This expansion includes additional Trust Lands in Nienie and Honoka'ia. The DOH is





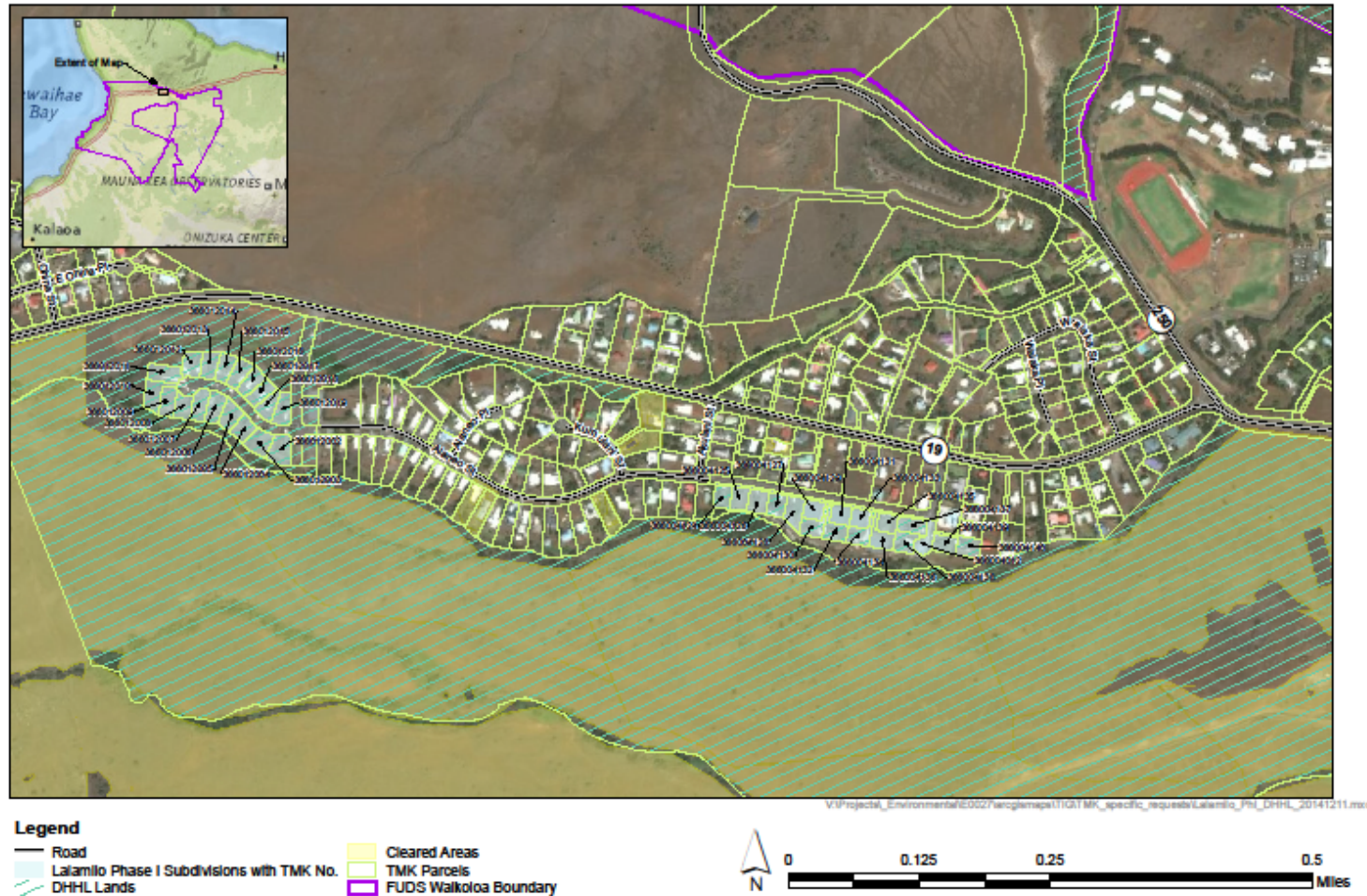
# Lalamio Phase 1 Subdivision



U.S. ARMY CORPS OF ENGINEERS, Honolulu District

Lalamio Phase I Subdivision  
**Former Waikoloa Manuever Area**

BUILDING STRONG<sub>®</sub>







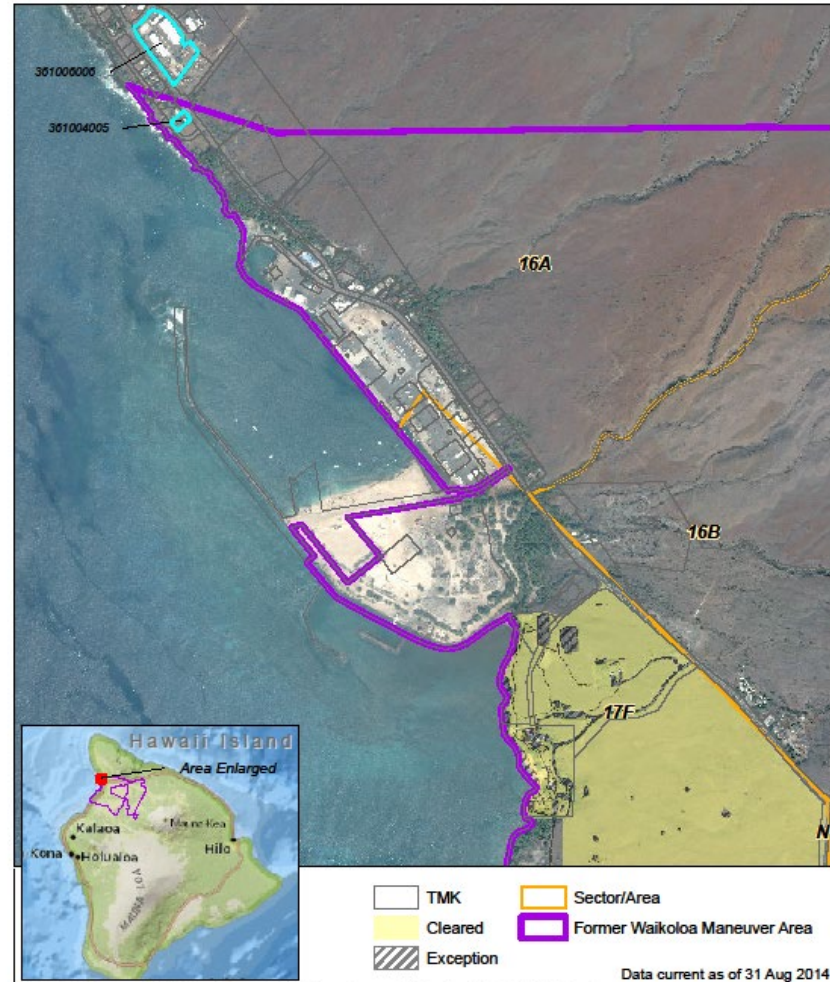
# Kawaihae Harbor



**Kawaihae Harbor**  
*Former Waikoloa Maneuver Area*

U.S. ARMY CORPS OF ENGINEERS, Honolulu District

BUILDING STRONG®



V:\Projects\Environmental\ED027\arogismaps\TIGITMK\_specific\_requests\KawaihaeHarbor\_20141023.mxd





# Formerly Used Defense Site

**The FUDS Program uses a three-phased cleanup process:**

***Phase I  
Inventory***

Determine if the property was formerly used by DoD and if contamination is present that resulted from DoD activity.

***Phase II  
Investigation***

Conduct an investigation to determine the nature and extent of the contamination.

***Phase III  
Cleanup***

Clean up the property to reduce risk to human health and the environment and to improve public safety.





# CERCLA Process

- Preliminary Investigations
- Remedial Investigation
- Feasibility Study
- Decision Document
- Remedial Actions
- Long Term Management Phase





# Mahalo



DEPARTMENT OF HAWAIIAN HOME LANDS

[www.dhhl.hawaii.gov](http://www.dhhl.hawaii.gov)