



HAWAIIAN HOME LANDS

HAWAIIAN HOMES COMMISSION • DEPARTMENT OF HAWAIIAN HOME LANDS

# **Community Information Meeting**

## **Molokaʻi**

April 19, 2021



# Agenda

- Welcome
- Planning Office Update
- Construction Status Updates
- Shoreline Erosion Update
- Homestead Associations



# Meeting Kuleana

- 1) Be respectful of the person talking – please do not interrupt the person that is talking;
- 2) Wait for the facilitator to call on you or type your question into the chat box
- 3) When addressing other participants (verbally or in the chat box), be respectful, show aloha, treat others how you would like to be treated;
- 4) Agree to disagree — accept that others may have different perspectives and opinions.
- 5) Have an open mind — take home new ideas or new information.

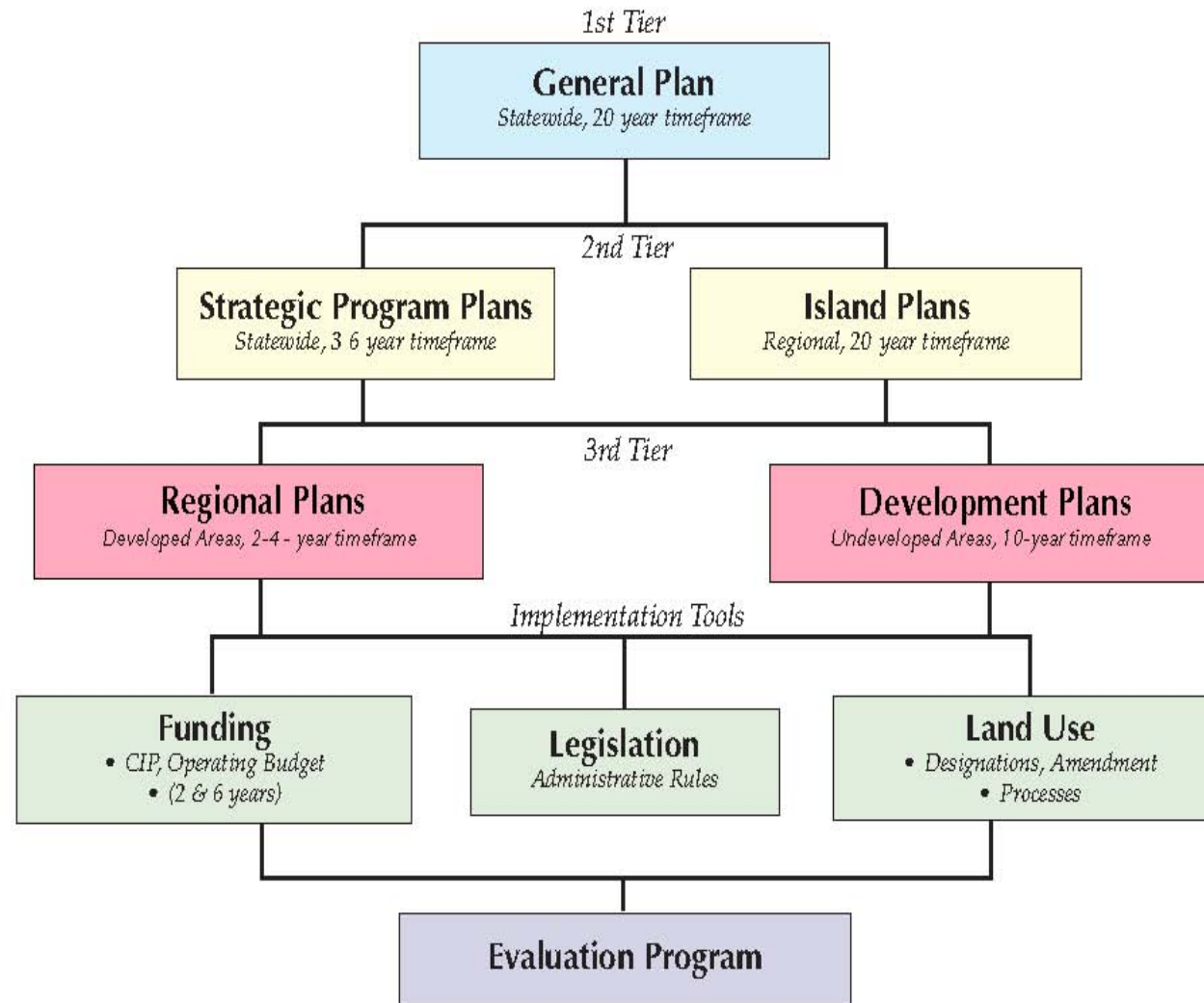


## **Planning Office Updates**





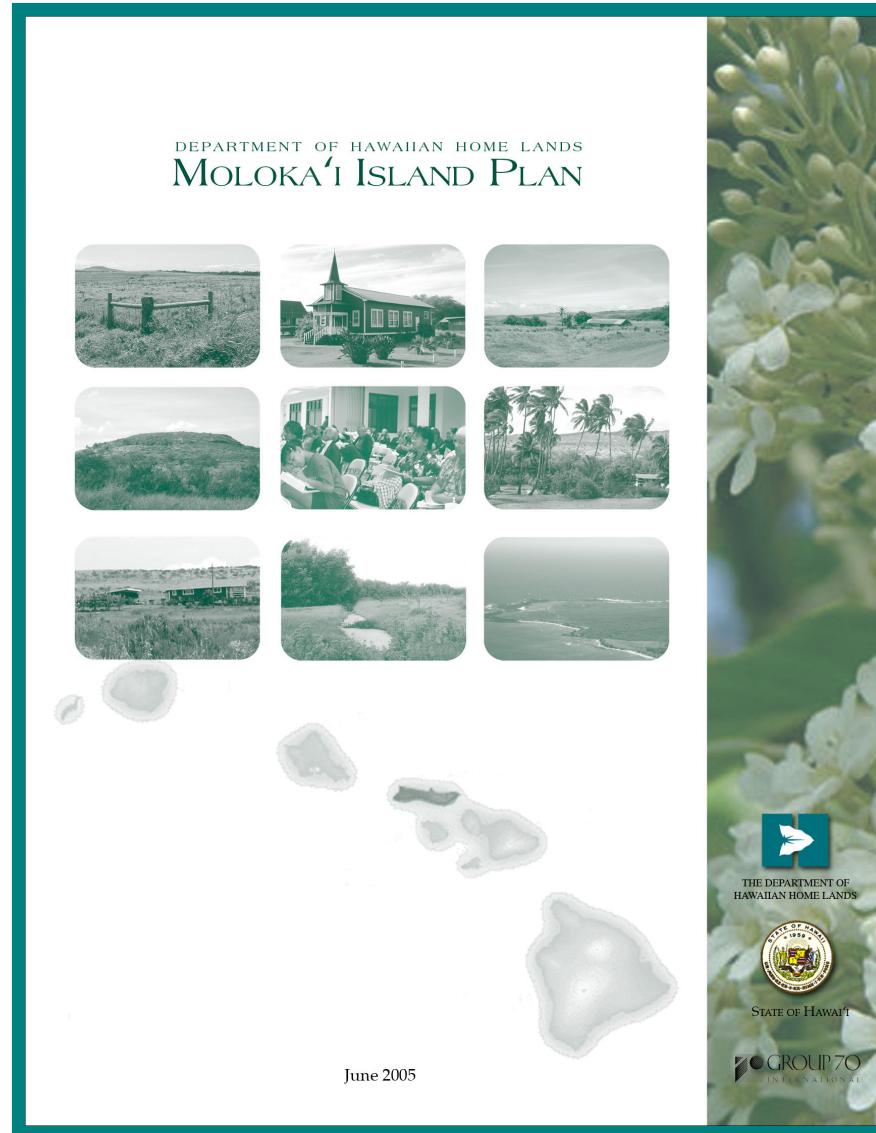
# DHHL Planning System



DHHL Planning System



# Moloka'i Island Plan





# Tier 2 - Molokaʻi Island Plan

- Nāʻiwa Agricultural Homestead
- Ualapuʻe Homestead
- Kapaʻakea, Kamiloloa, Makakupa ʻIia Residential



- 
- The map displays the following regional plans (from top-left to bottom-right):
- MAUI
  - MAUI - SOUTH
  - MAUI - NORTH
  - MAUI - WEST
  - MAUI - EAST
  - MAUI - SOUTH
  - MAUI - NORTH
  - MAUI - WEST
  - MAUI - EAST
  - MAUI - SOUTH
  - MAUI - NORTH
  - MAUI - WEST
  - MAUI - EAST
  - MAUI - SOUTH
  - MAUI - NORTH
  - MAUI - WEST
  - MAUI - EAST
- A large red arrow points to the 'MOLOKAI' plan.





# Tier 3 – Regional Plans

- Ualapu'e Kuleana Homestead Project
- Ho'olehua Hale Improvements
- Water Rates Assessment
- Shared Farm Equipment
- Road Improvements



# Tier 3 – Special Area Plans

- Malama Park – Special District
- Mo‘omomi-Anahaki – Special District



# Additional Projects

## HHC Item E-1

- Ho'olehua Scattered Lots
- Kalama'ula Agricultural Lots
- DHHL Ho'olehua water system improvements
- Moloka'i Veterans and Homestead Residents Center
- Lanikeha Center – Individual Wastewater System

## HHC Item G-3

- South Moloka'i Shoreline Erosion Management Plan

## Other

- Kulana 'Oiwī office complex – Photovoltaic System



# Land Development Division

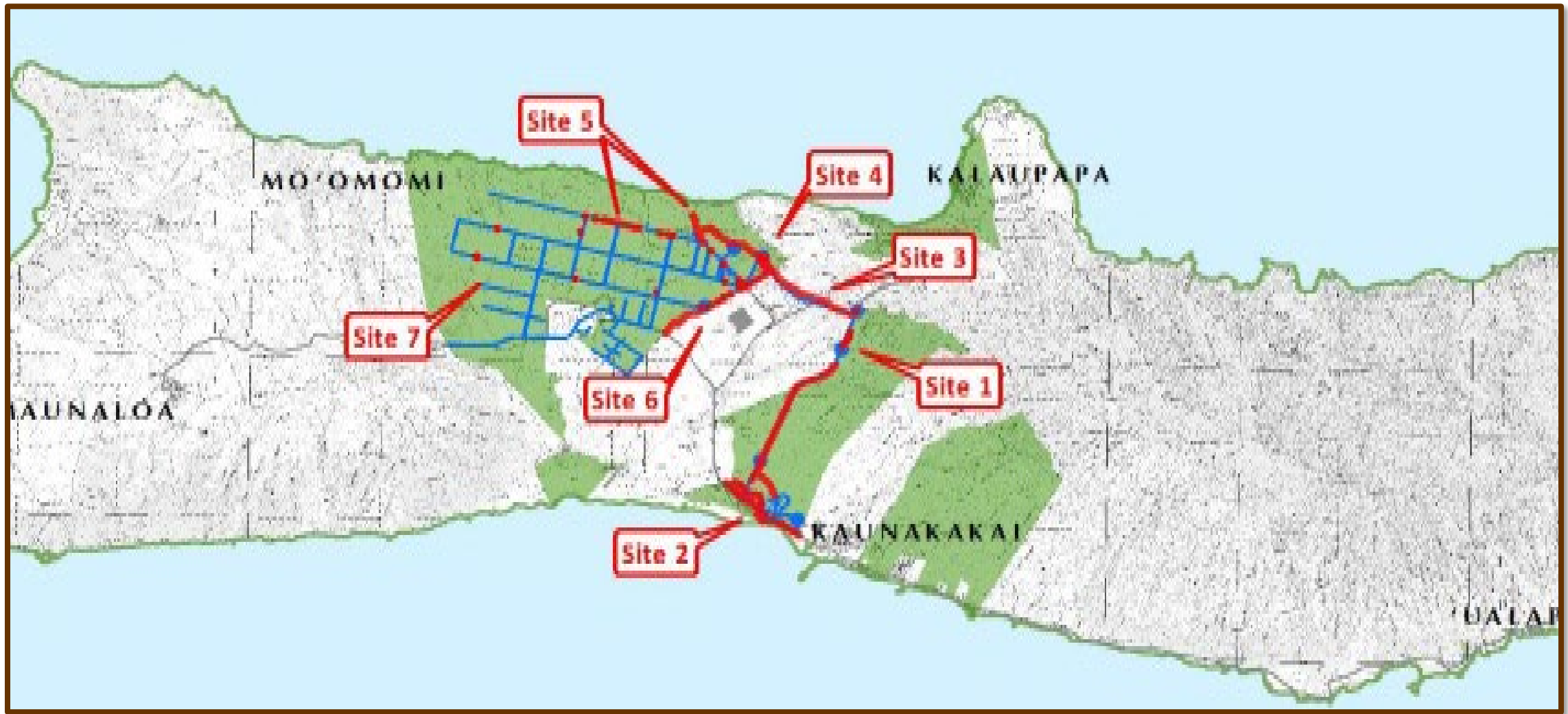
## **Construction and Repair & Maintenance Update**





# Ho'olehua Water System

## Improvements Located at Seven Areas





# Ho'olehua Water System - Proposed Improvements

## **Objectives:**

- Improve reliability and functionality of water delivery
- Address Water Pressure issues
- Address Fire Protection Deficiencies
- Improve Water System Safety and Security
- Reduce Energy Cost

# Ho'olehua Water System Improvements - Project Funding



•USDA Loan:	\$ 7,455,000
•USDA Grants:	\$ 11,634,083
•DHHL Contribution:	\$ 12,923,250
•Legislature CIP:	<u>\$ 500,000</u>

Total Funds:	\$ 31,362,333
--------------	---------------



# Ho'olehua Water System – Project Status

- **Package 1: Ho'olehua**
- **Package 2: Kalamaula**
  - Project bids submitted in August 2018
  - Construction contracts awarded to Goodfellow Bros. LLC for Package 1 and 2.
  - Package 2: Under construction.
  - Package 1: Commencing construction by May 2021; 18-month construction duration.
- **Package 3: Photovoltaic system**
  - Continue negotiations with Maui Electric Co.
- **Package 4: Equipment for Operations and Maintenance**
  - Bids received on March 31, 2021 are under review.



# Nā'īwa Ag Subdivision – Site Improvements

## SCOPE OF WORK

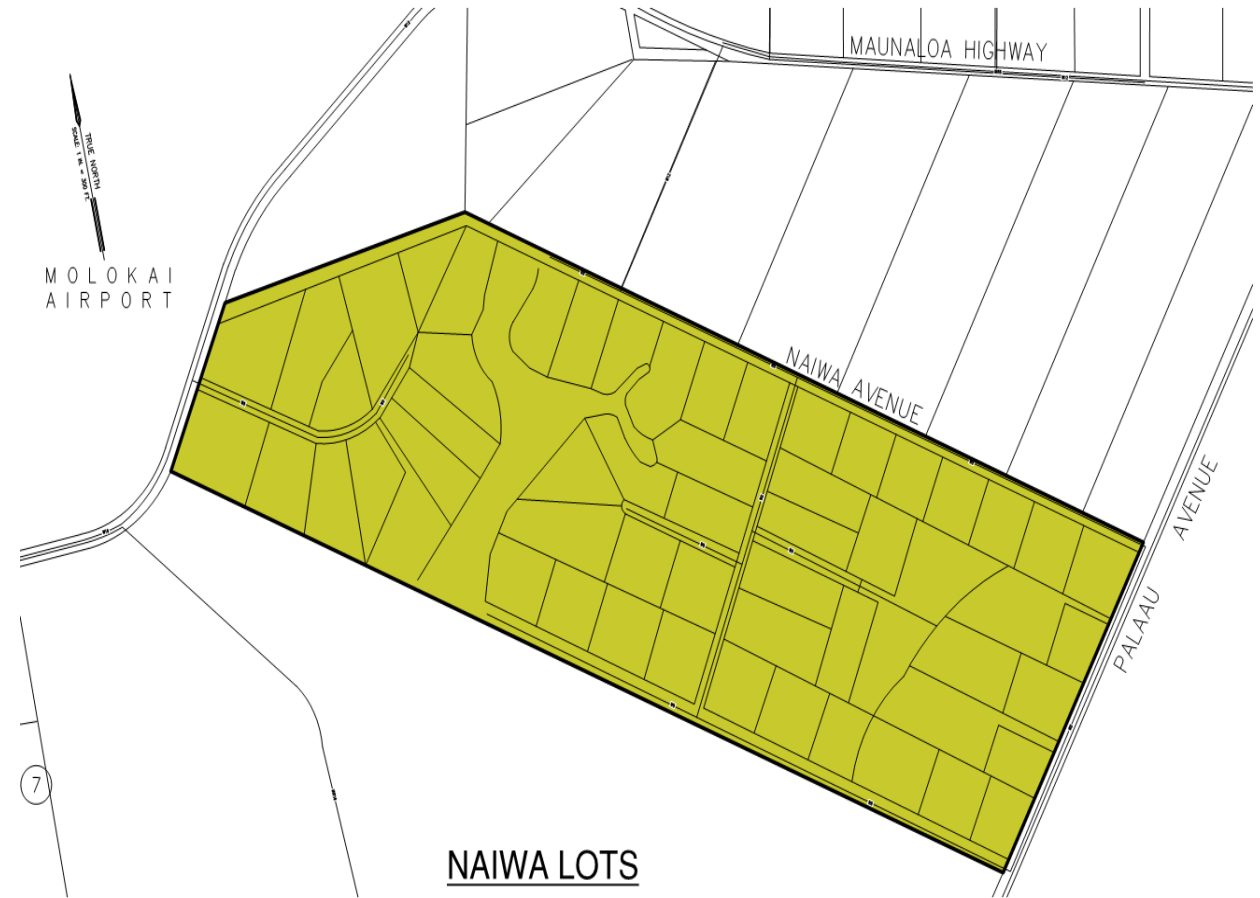
- 58 lot subdivision
- Planned Infrastructure Improvements
  - Roadways
  - Irrigation water
  - Potable water (subject to DHHL water reservations)
  - Electrical service

## BUDGET

- Environmental Assessment & Preliminary Engineering Report: \$550,000
- Design & Subdivision Approval: \$950,000
- Construction: \$9,500,000 (estimated)

## SCHEDULE

- Early 2021: Start Chap. 343 Environmental Documentation
- Late 2021: Complete Environmental Documentation
- Mid 2022: Complete design
- Mid 2022: Advertise bids for construction
- Early 2023: Begin construction
- Late 2024: Construction completed; Final Subdivision Approval



**\*Subject to construction funding**



# Ho'olehua Scattered Lots – Site Improvements

## **SCOPE OF WORK**

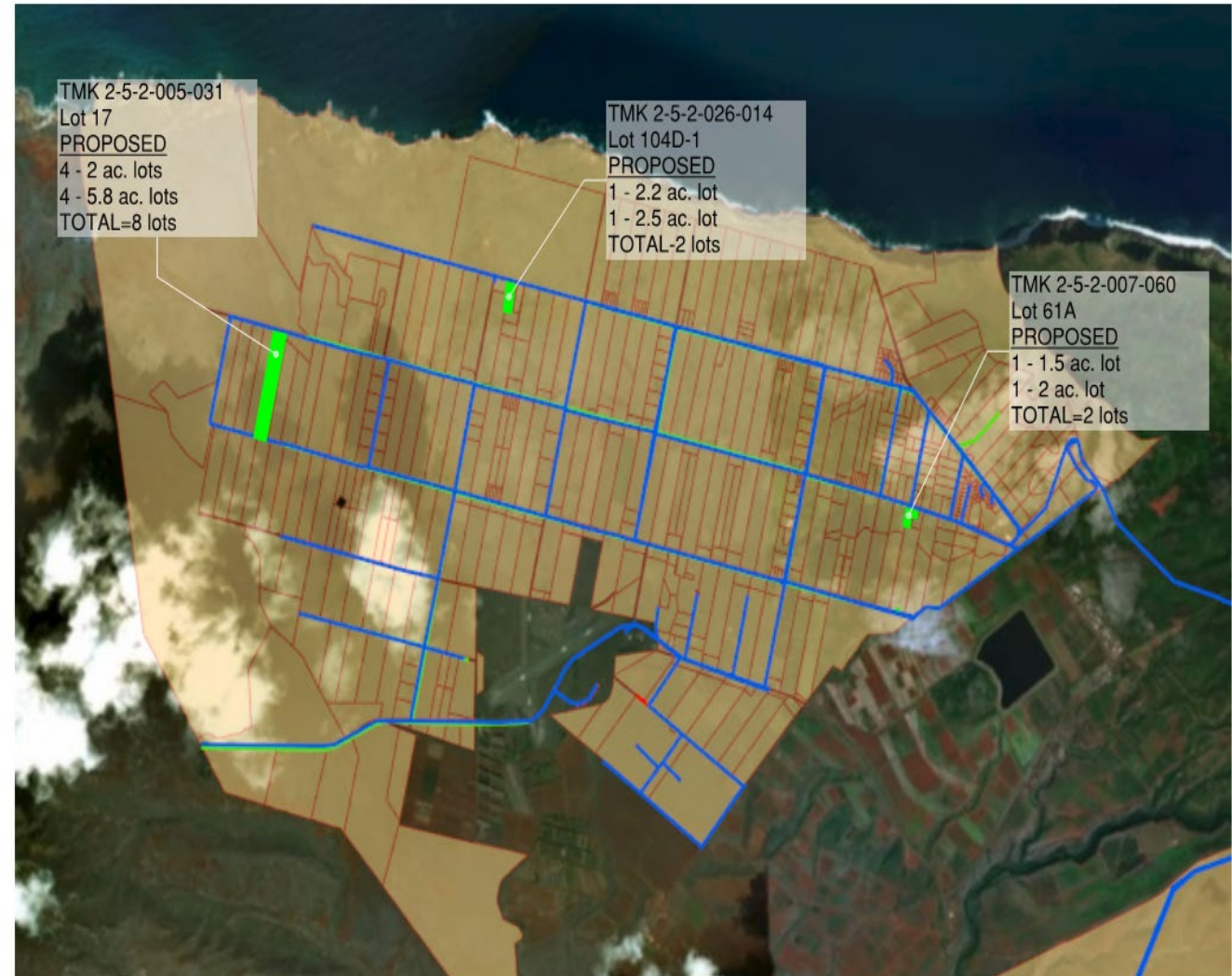
- Create at least 11 new lots from existing ag lots
- Potential Infrastructure Improvements
  - Roadway and electrical
  - Irrigation water

## **BUDGET**

- Design: \$350,000
- Environmental Assessment: \$600,000
- Construction: \$550,000
- Additional construction: \$2,000,000 (estimated)

## **SCHEDULE**

- Late 2021: Complete Environmental Documentation
- Early 2022: Complete design
- Mid 2022: Advertise bids for construction
- Fall 2022: Begin construction.
- Early 2023: Construction completed



HO'OLEHUA VACANT LOTS





# Moloka'i Homestead Resident Center + Veteran's Center

- New facility for joint use by DHHL Homestead Residents and Moloka'i Veterans.
- 90% of the project design has been completed
- Building permit application submitted in March 2021
- Legislative Appropriation \$4-million
- Estimated construction to begin in the Winter 2021

Project Location







# Lanikeha Center

- Video inspection of internal waste-lines completed in February 2021.
- Procurement to repair or replace the sewer lines to be issued in Summer 2021 as an Invitation to Bid

Project Location







# Planning Office

## **South Molokaʻi Shoreline Erosion Management Plan Project Update**





# Project Purpose

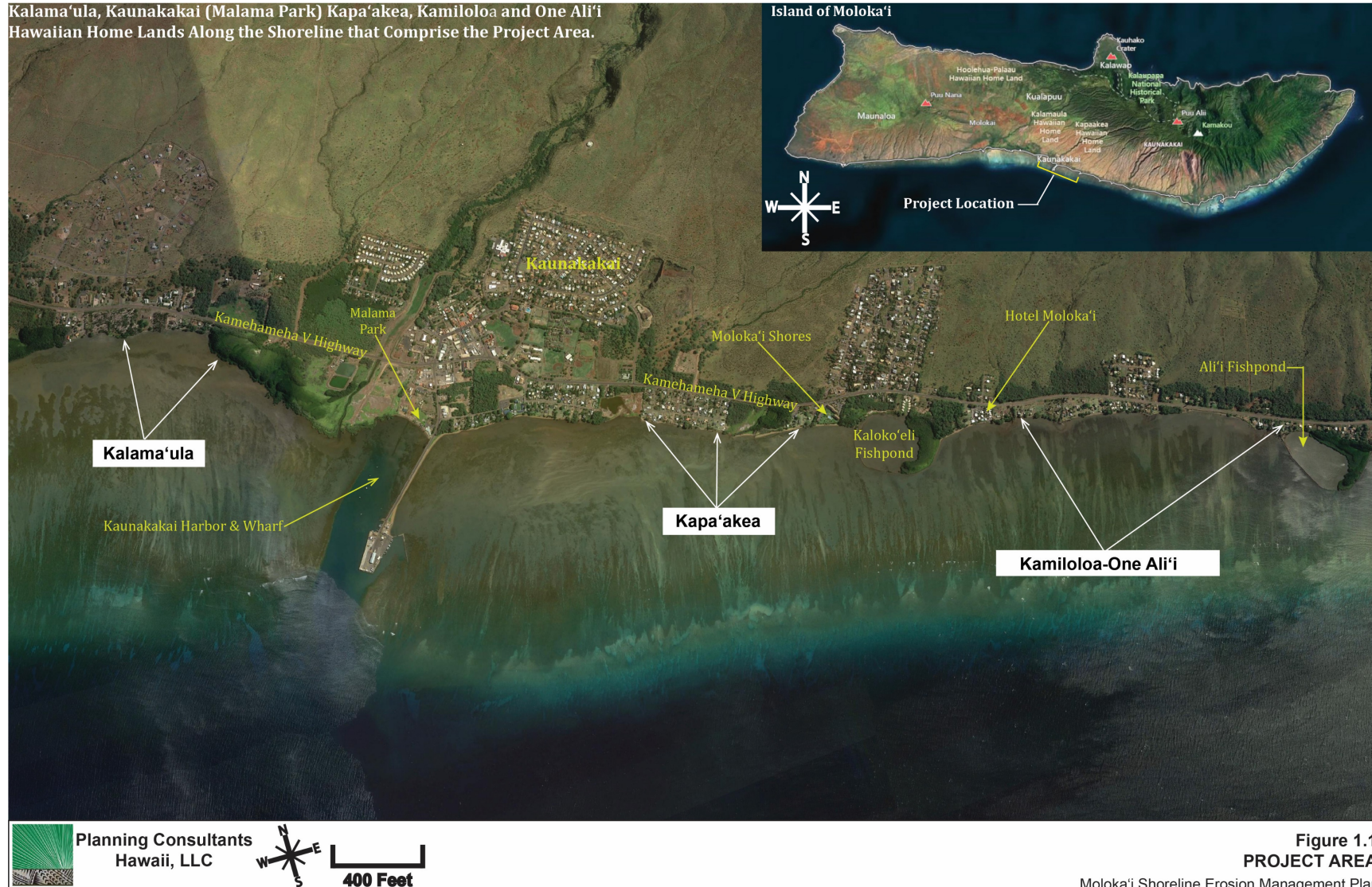
- Enable DHHL to proactively plan for and manage shoreline erosion
- Investigate underlying causes of shoreline erosion, and likely future progression
- Identify effective and sustainable shoreline erosion management strategies that maintain natural processes and consider community needs
- Educate the community as to causes of shoreline erosion and appropriate management responses.





# SM-SEMP Project Area

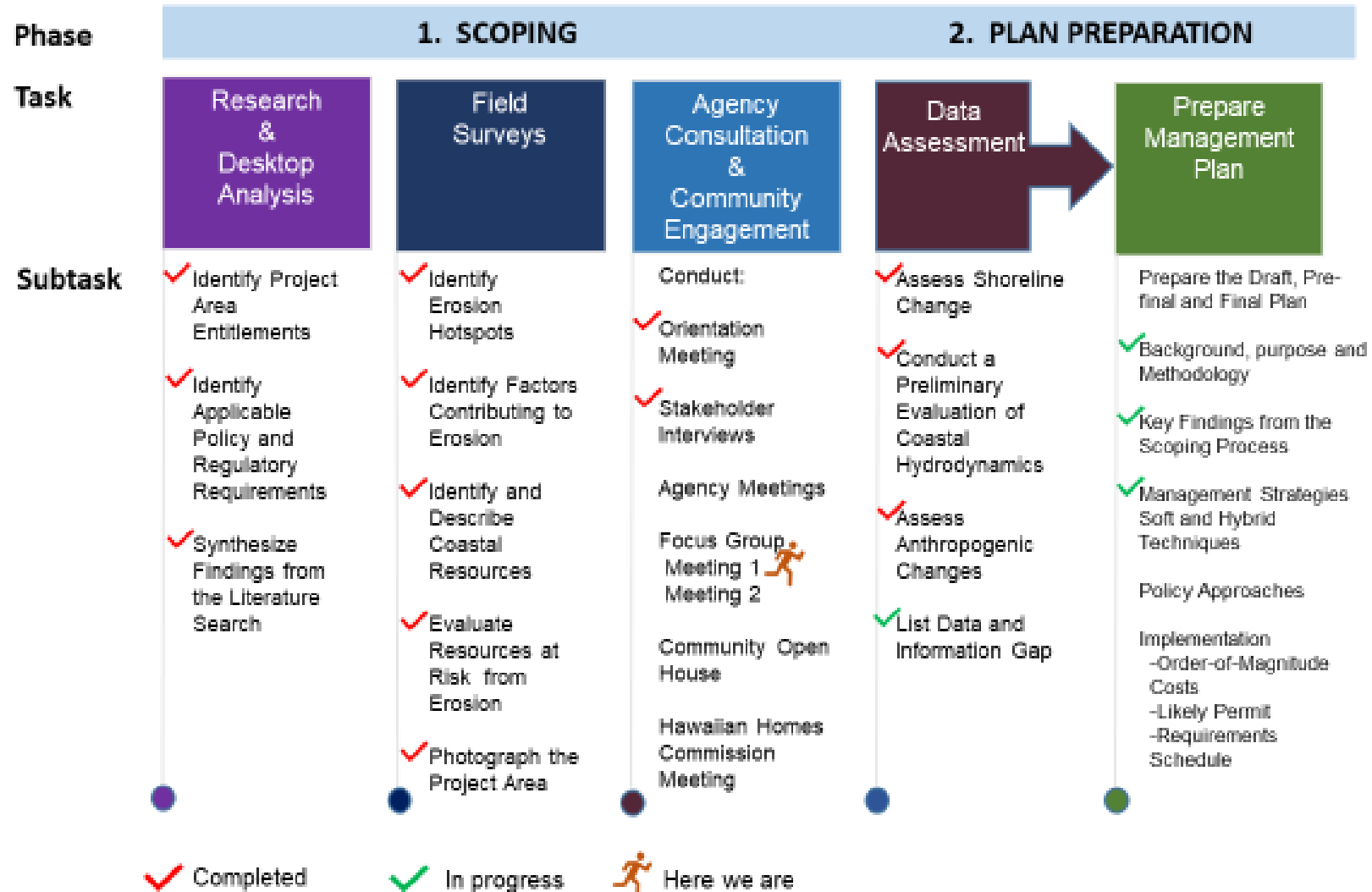
Kalama'ula added in 2019





# Current Project Status

## Planning Process











# Molokai's Kona Shoreline Today



**KALAMA'ULA**

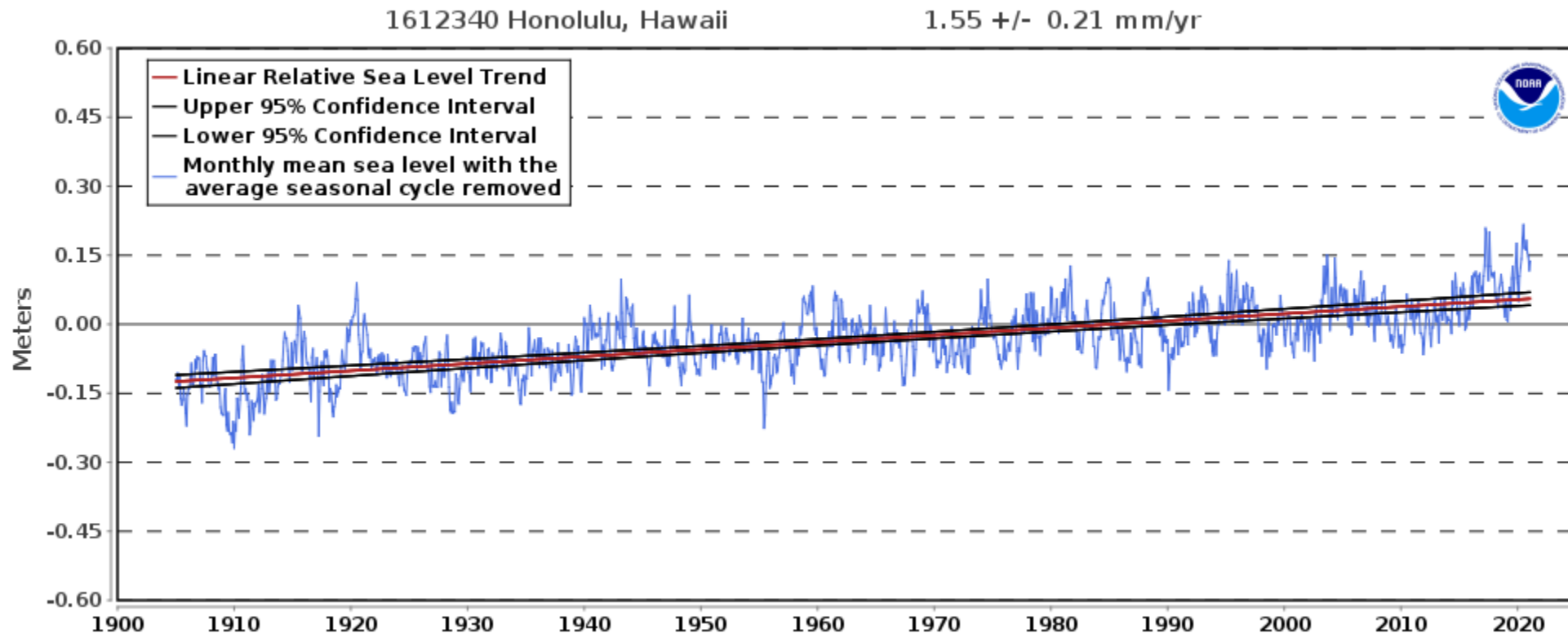
**KAPA'AKEA, KAMILOLOA, MAKAKUPA'IA**



# Need for Project – Climate Change & SLR

- Sea levels are rising, and rate of change may be accelerating -- sea level around Hilo Bay has risen by 10 inches since 1950, and is now rising faster at about 1 inch every 4 years
- An appropriate planning target would include sea level benchmark of 1 foot by mid-century and into lower end (about 3 feet) of 2.5 to 6.2 ft by end of the century.

<https://climate.hawaii.gov/hi-facts/sea-level-rise/>







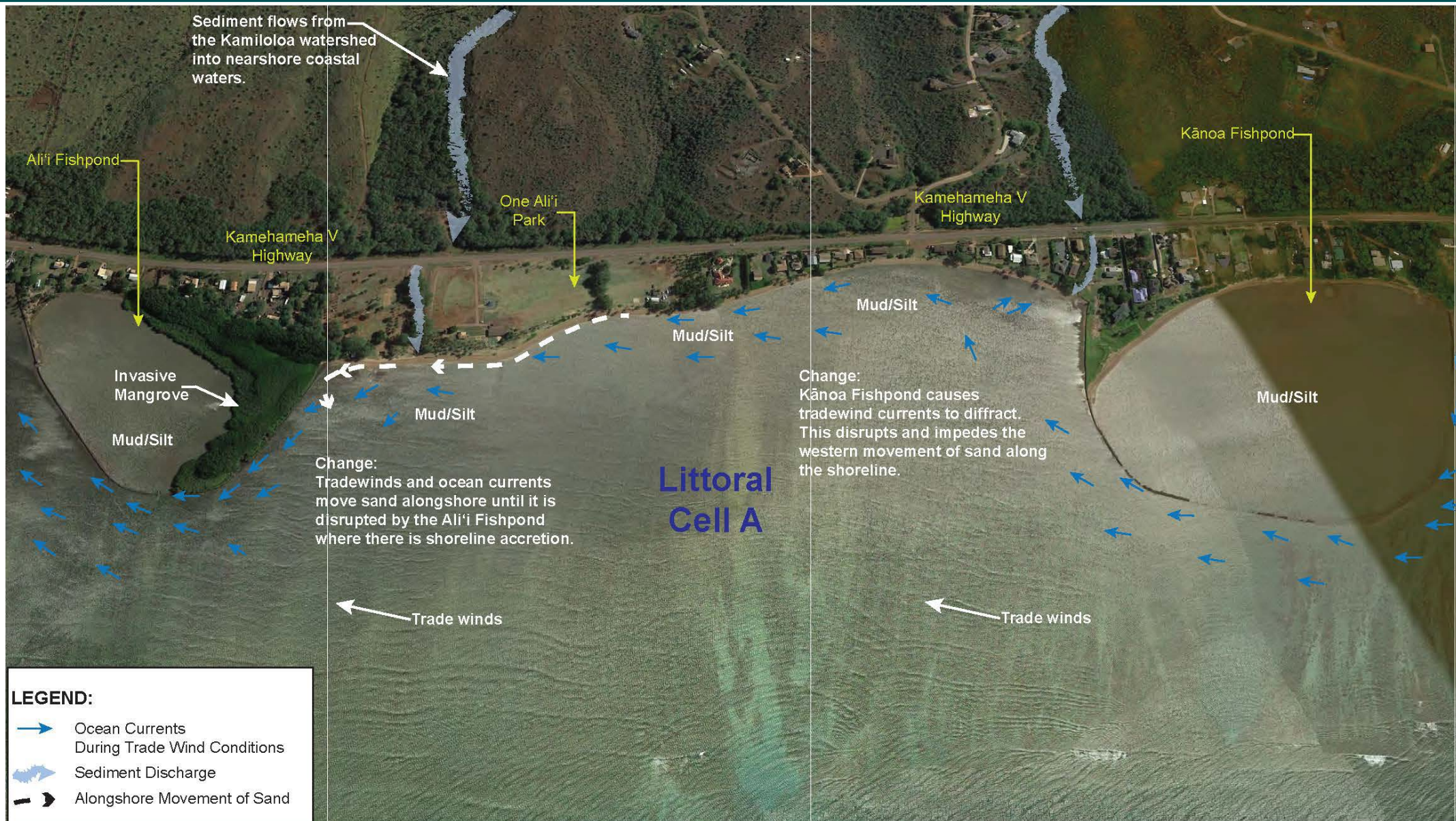
# Changes to Project since last HHC Update

- In response to beneficiary and Commissioner requests, Kalama‘ula added to Project Area; Malama Park in Kaunakakai also added
- Addition triggered changes to project scope, time of performance, and budget
- Kalama‘ula site visits and interviews conducted in Nov. 2019
- Additional research was performed to more adequately document cultural and historic knowledge and sense of place such as ahupua‘a and place names, wahi pana, pre-contact history, mo‘olelo, mele, nā makani, nā ua, nā wai
- COVID-19 travel restrictions caused project delays and necessitated changes to community outreach strategy – smaller focus group meetings added





# Coastal Hydrodynamics







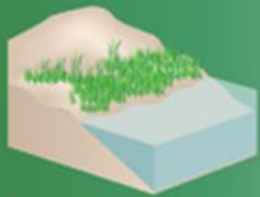
# Response Options to Changing Shorelines

A continuum of green (soft) to gray (hard) shoreline stabilization techniques

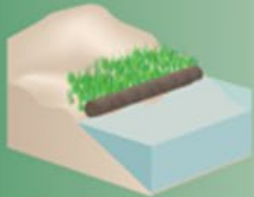
## GREEN - SOFTER TECHNIQUES

## GRAY - HARDER TECHNIQUES

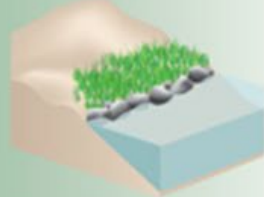
### *Living Shorelines*



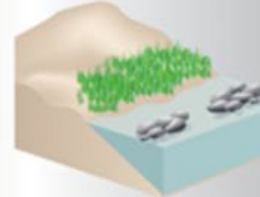
**VEGETATION ONLY -**  
Provides a buffer to upland areas and breaks small waves. Suitable only for low wave energy environments.



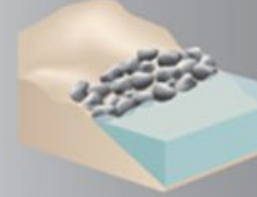
**EDGING -**  
Added structure holds the toe of existing or vegetated slope in place.



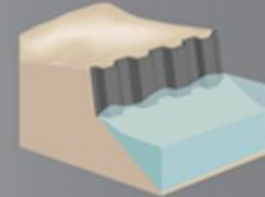
**SILLS -**  
Parallel to existing or vegetated shoreline, reduces wave energy, and prevents erosion. Suitable for most areas except high wave energy environments.



**BREAKWATER -**  
(vegetation optional) - Offshore structures intended to break waves, reducing the force of wave action, and encourage sediment accretion. Suitable for most areas.



**REVETMENT -**  
Lays over the slope of the shoreline and protects it from erosion and waves. Suitable for sites with pre-existing hardened shoreline structures.



**BULKHEAD -**  
Vertical wall parallel to the shoreline intended to hold soil in place. Suitable for areas highly vulnerable to storm surge and wave forces.





# Next Steps

- Process results from Feb. 10 Focus Group meeting
- Newsletter update to community
- Develop preliminary draft recommendations
- Host a second Focus Group meeting to vet preliminary draft recommendations (early Summer)
- Revise preliminary draft recommendations to reflect input received during Focus Group Meeting #2
- Host a Community Open House (late Summer)
- Prepare Pre-final plan and present to HHC (early Fall)
- Finalize Plan



# Homestead Associations

- Ahonui Homestead Association
- Ahupua'a o Molokai
- Ho'olehua Homestead Agriculture Association
- Ho'olehua Homestead Association
- Kalama'ula Homesteaders Association
- Kalama'ula Mauka Homestead Association
- Kapa'akea Homestead Association
- Kamiloloa-One Ali'i Association
- Moloka'i Homestead Farmers Alliance
- Nā'iwa Homestead Assoc
- Napualei o Hina



# Mahalo



DEPARTMENT OF HAWAIIAN HOME LANDS

[www.dhhl.hawaii.gov](http://www.dhhl.hawaii.gov)