



HAWAIIAN HOME LANDS
HAWAIIAN HOMES COMMISSION
DEPARTMENT OF HAWAIIAN HOME LANDS

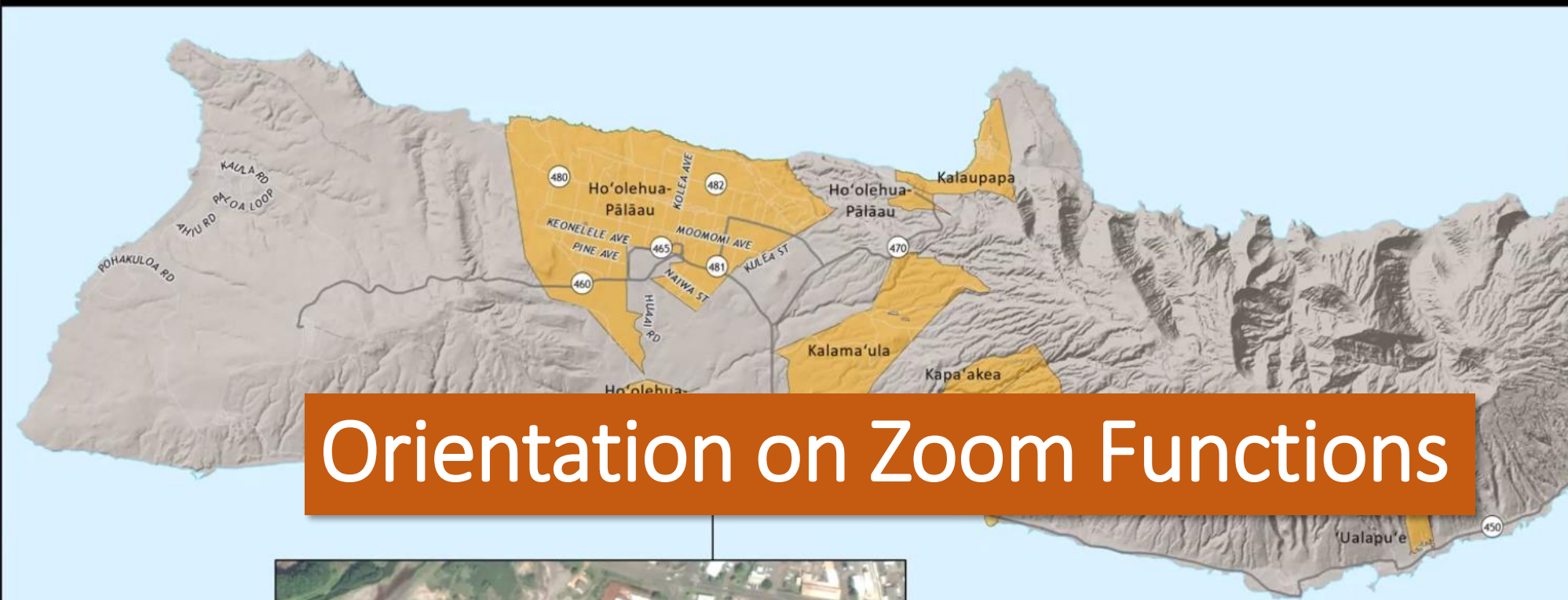
**Malama Cultural Park
Special Area Plan**

Beneficiary Consultation Meeting #2

**April 29, 2021
6:30-8:00pm**



**Prince Jonah
Kūhiō
Kalanianaʻole
(1871–1922)**



Orientation on Zoom Functions



Legend

- Project Area
- DHHL Lands

0 1.5 3 Miles

Source: U.S. Census Bureau, 2016

How to use the “Raise Hand” function

display

Raise/Lower Hand button

Participants (2)

- Cody Winchester (Me)
- Janice Jensen (Host)

Invite Mute Me Lower Hand

Legend

- Project Area
- DHHL Lands

0 1.5 3 Miles

Source: U.S. Census Bureau, 2016

How to Share Your Input

During Meeting

Type into the “Chat” box

Use “Raise Hand” to ask questions
or share your mana‘o

After Meeting

Email:

MalamaCulturalPark@G70.design

Presentation slides and survey questions will be posted on the Project page at

<https://dhhl.hawaii.gov/po/special-area-plans/malama-cultural-park/>

Introductions

Agenda

Laying the Foundation

Part 1

Where Are We in the Planning Process?

Part 2

What Have We Learned From You So Far

Part 3

Develop a Vision for the Park

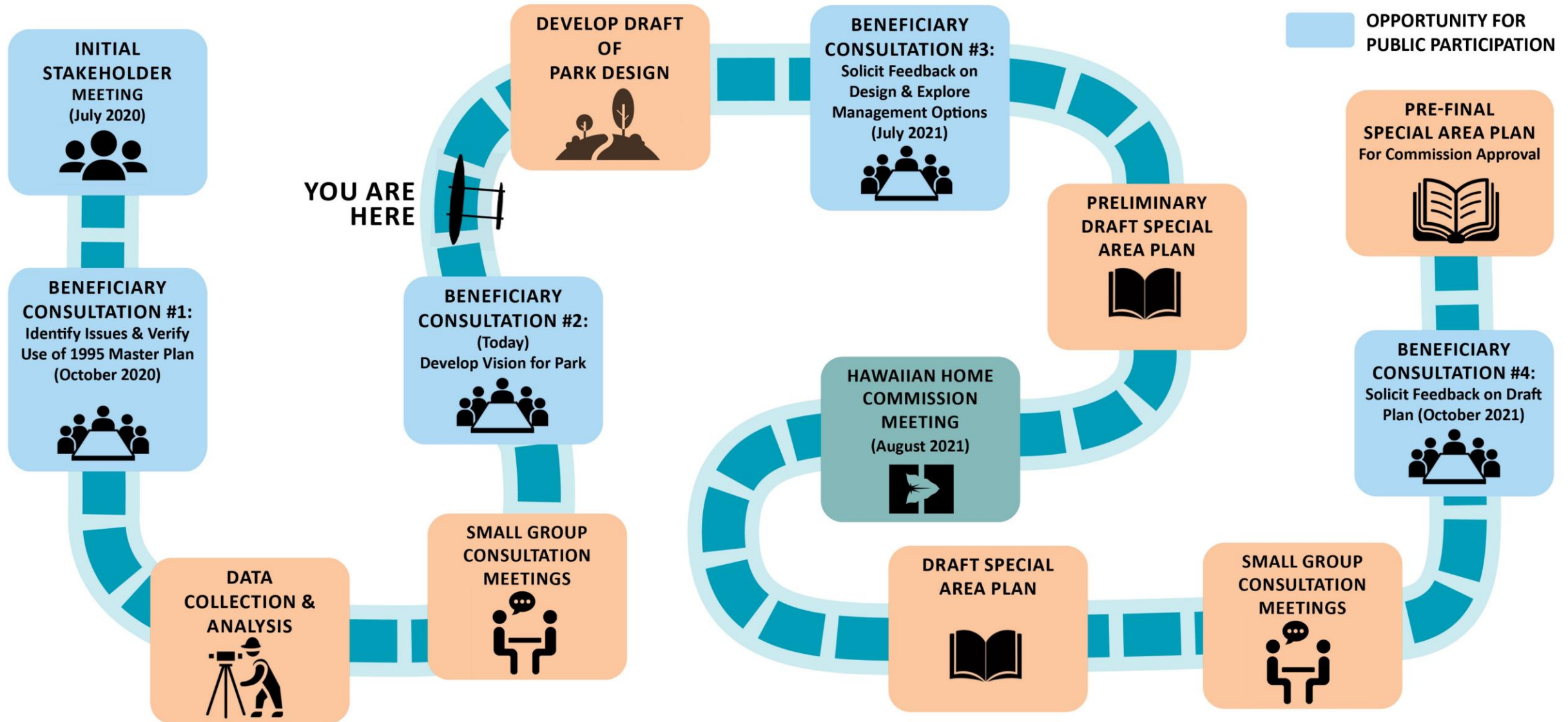
Part 4

Explore Opportunities for Park Design

Part 1

**Where Are We in the Planning
Process?**

Where Are We in The Community Planning Process?



Key Findings

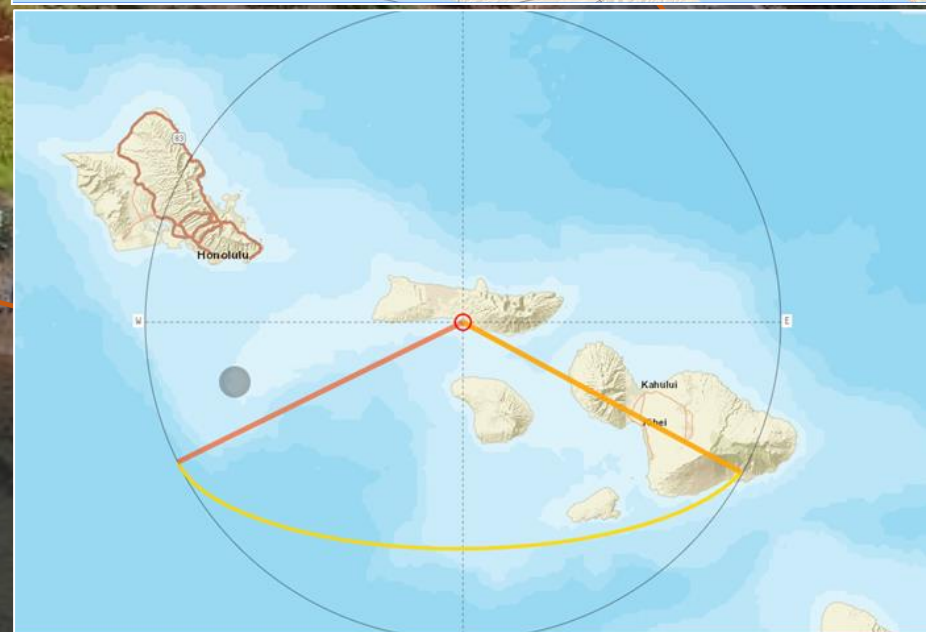
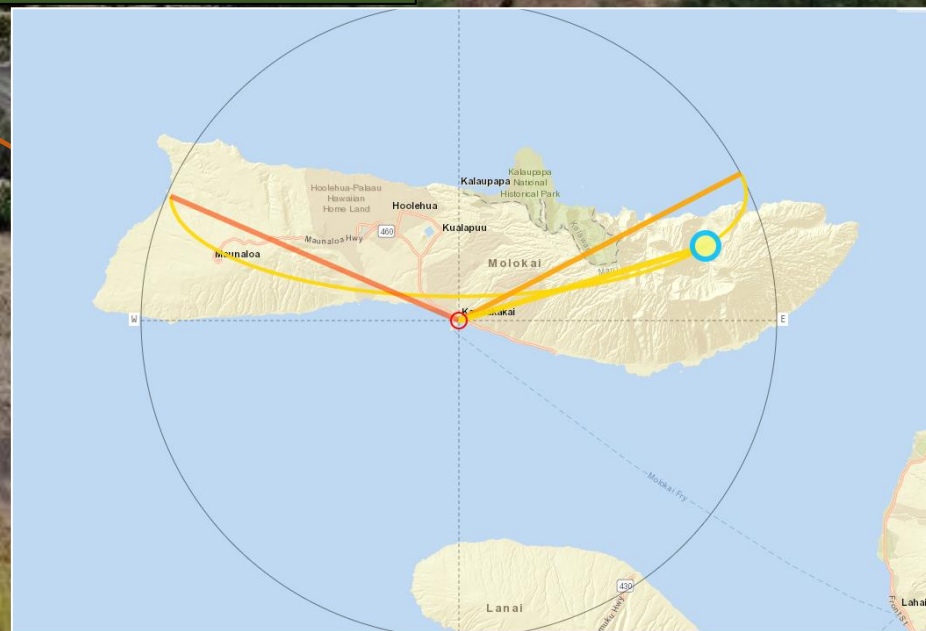


Key Findings





Key Findings

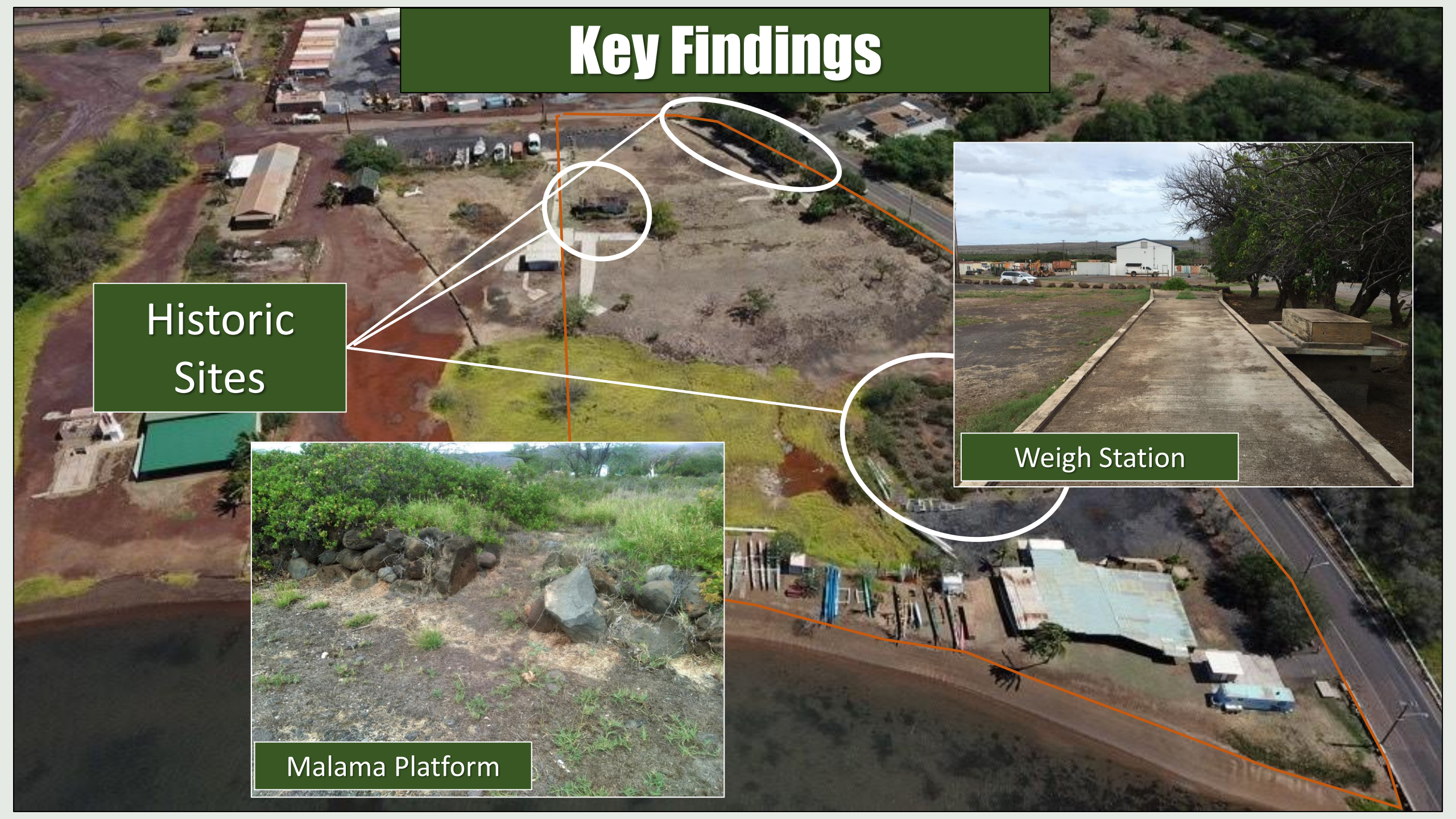
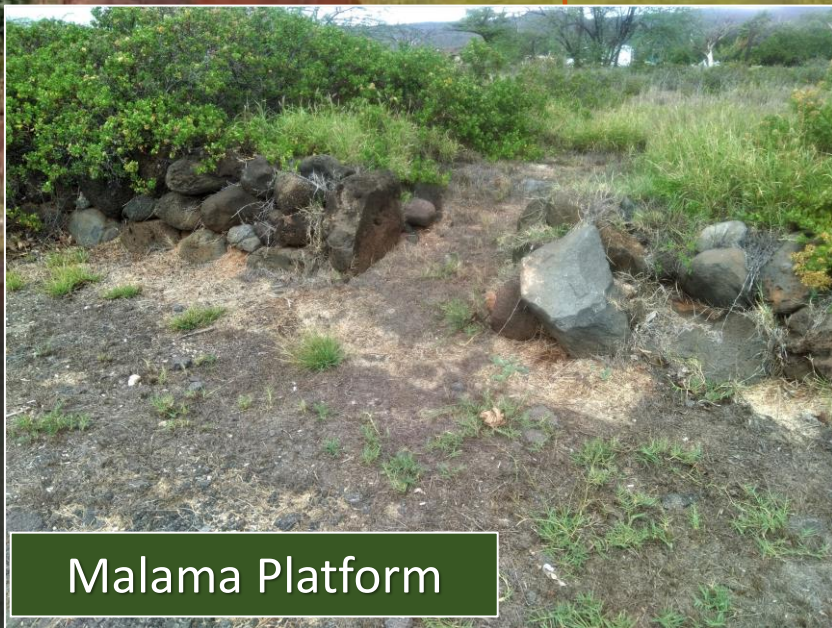


Key Findings

Historic Sites

Weigh Station

Malama Platform



Key Findings

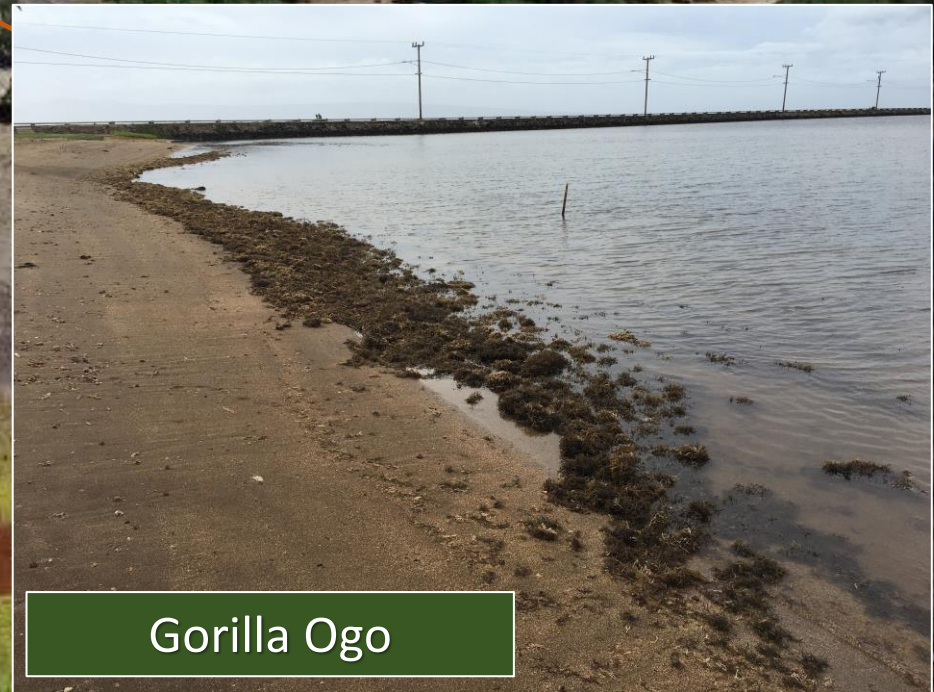
Biological
Resources

Pickleweed Wetland



Key Findings

Biological
Resources

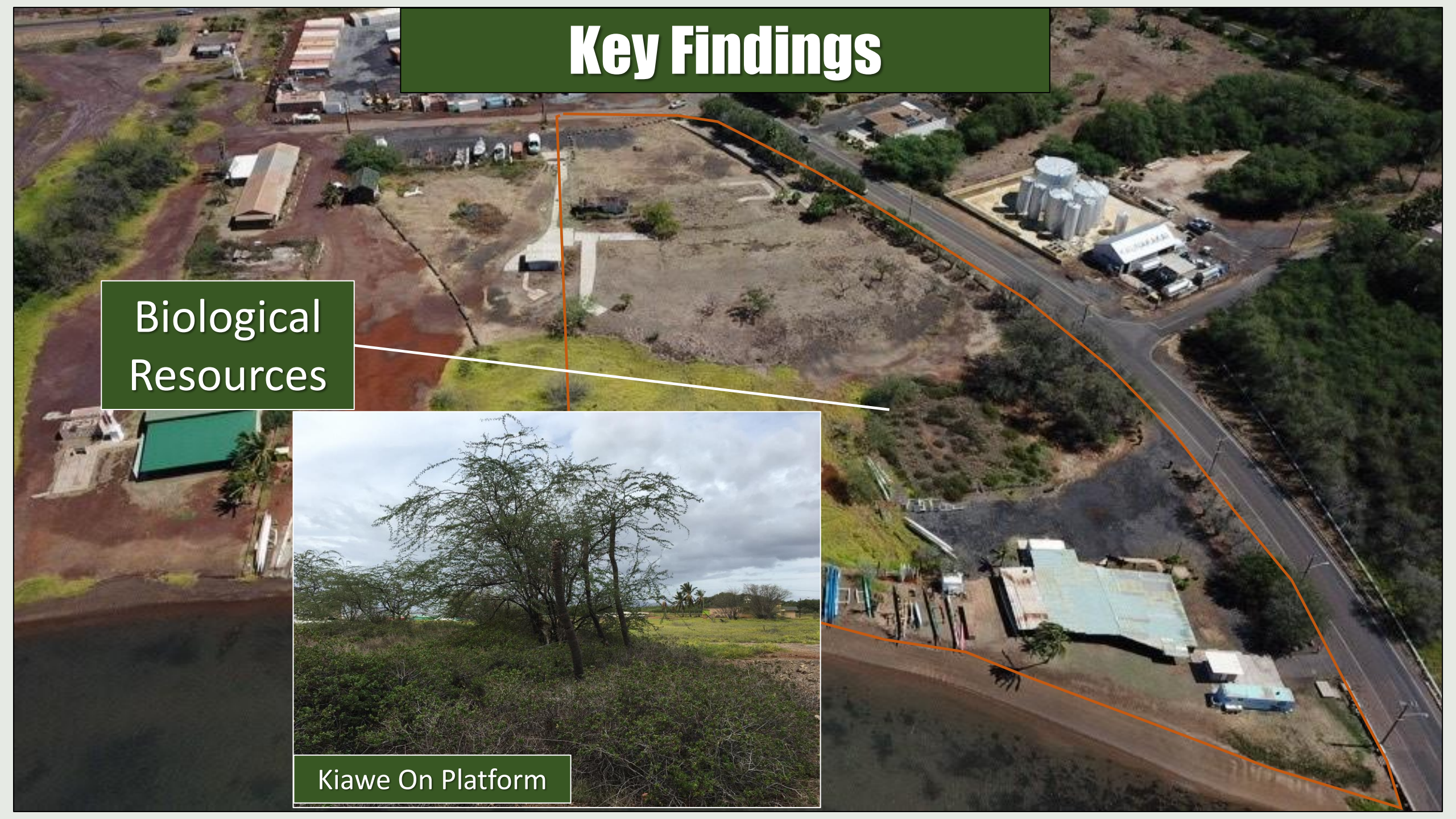


Gorilla Ogo

Key Findings

Biological
Resources

Kiawe On Platform



Key Findings

Biological
Resources

Dead Trees



Key Findings

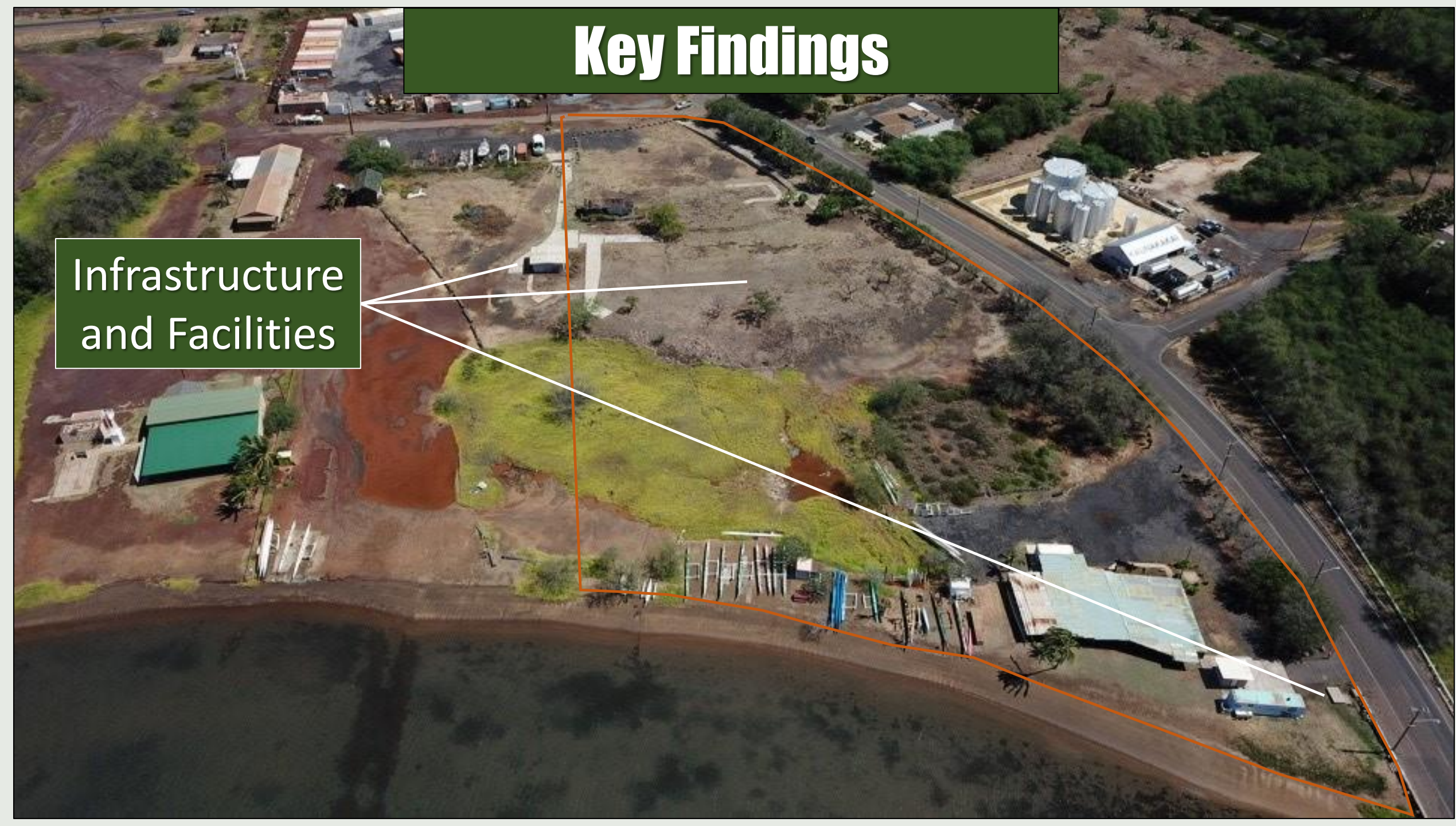
Coastal
Geology

ELEVATION (INCHES MLLW)

Elevation (inches MLLW)
50
40
30
20
10
0
-10
-20

Key Findings

Infrastructure
and Facilities



Key Findings

Uses and
Users



Key Findings



Pam Mathis Photography
©allcopyrightsreserved, 2017
2nd Regatta, 2017
Molokai, HI

Pam Mathis Photography
©allcopyrightsreserved, 2017
2nd Regatta, 2017
Molokai, HI

Key Findings

‘Ōpala



Access



Safety





Part 2

**What Have We Learned From You
So Far?**

Beneficiary Consultation #1

October 12 & 13, 2020

Importance of canoe culture

Concern for sea level rise and inundation

Perpetuate Hawaiian history and culture

Frustration with lack of action

Confusion about park access

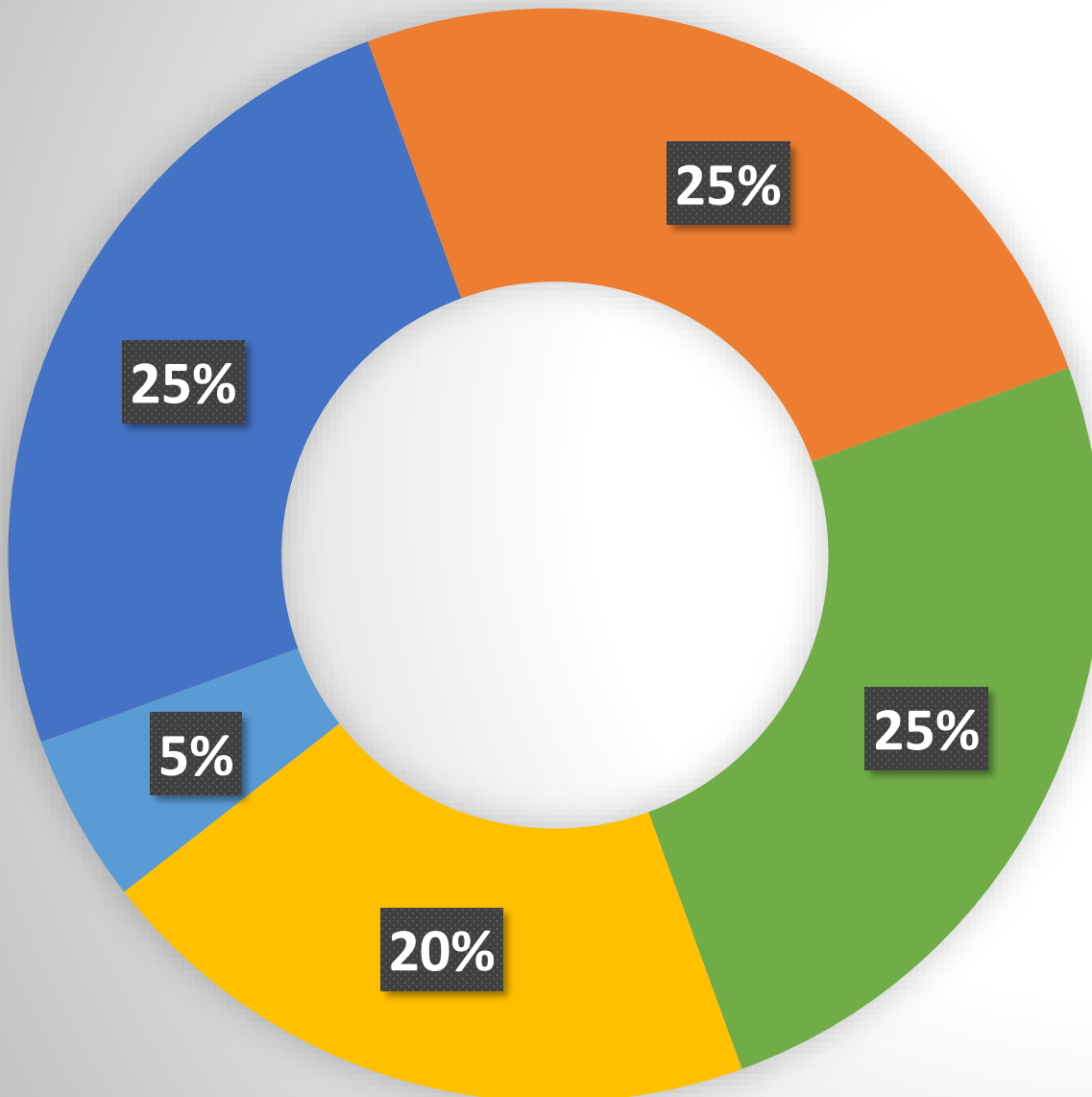
Importance of park management

An oasis for healing and fellowship



HAWAIIAN
HOME LANDS
DEPARTMENT OF LAND AND NATURAL RESOURCES

Which of these most accurately describes your vision for the Malama Cultural Park?
(Please choose your top 2 answers)



- A safe and family orientated space for playing, celebrating, and recreating.
- An active recreation area that inspires personal growth, healthy lifestyles, and team building.
- A natural area focused on education and the preservation of resources.
- A dynamic marketplace for arts, music, local foods and cultural performance.
- A quiet and leisurely place for reading, relaxing, and personal contemplation.

Small Group Meetings

- ❖ Moloka'i Canoe Club
- ❖ Aha Kukui Canoe Club
- ❖ Commissioner Zachary Helm
- ❖ State of Hawai'i Department of Transportation, Harbors Division
- ❖ State of Hawai'i Department of Health, Wastewater Branch
- ❖ Department of Parks and Recreation
- ❖ Maui County Department of Water Supply
- ❖ Maui County Development Services Administration

Part 3

Developing A Vision For the Park?

Visioning

WHAT IS A VISION STATEMENT?

- ❖ An inspiring/motivating statement that describes reason or purpose
- ❖ Helps set and achieve short-term goals
- ❖ Keeps long-term goals in mind
- ❖ Paepae i ka pōhaku
- ❖ A kākou effort



Visioning

1995 MASTER PLAN

Uses

- ❖ Canoe Paddling, makahiki, arts and crafts
- ❖ Economic sustainability and opportunity
- ❖ Learning and discovery
- ❖ Moloka'i as piko of hula

Pilina

- ❖ Strengthen relationships between park users
- ❖ Connect town to the ocean, a central gathering point

Kuleana

- ❖ Community-based management



Visioning

BENEFICIARY CONSULTATION #1

(October 12-13, 2020)

Uses

- ❖ Canoe paddling, hanapa'a, surf, collect limu

Pilina

- ❖ Gathering place for family/community
- ❖ *Our* beach
- ❖ Connection to family, place, culture, oasis



Visioning

BENEFICIARY CONSULTATION #1

(October 12-13, 2020)

Values

- ❖ History and culture
- ❖ Nature-based education
- ❖ Recreation
- ❖ Healthy lifestyle
- ❖ Fellowship
- ❖ Healing
- ❖ Safety
- ❖ Celebration



Gathering
Āina
Culture
Kuleana
Oasis
‘Ohana

Healing
Celebration
Community
Recreation
Learning
Connection
Discovery
Education
Fellowship
Relationship

Preliminary Vision Statement*

“An oasis rich in cultural tradition and a place for ‘ohana to gather, Malama Cultural Park is ‘āina; where kuleana has and continues to be carried forward from generation to generation.”

**Work in progress based on 1995 Master Plan and BC#1*

Question #1

What does 'āina mean to you?



Question #2

What cultural traditions are important to carry forward and why?



Question #3

*What matters most to
'ohana here?*



5-Minute Break

Revised Vision Statement

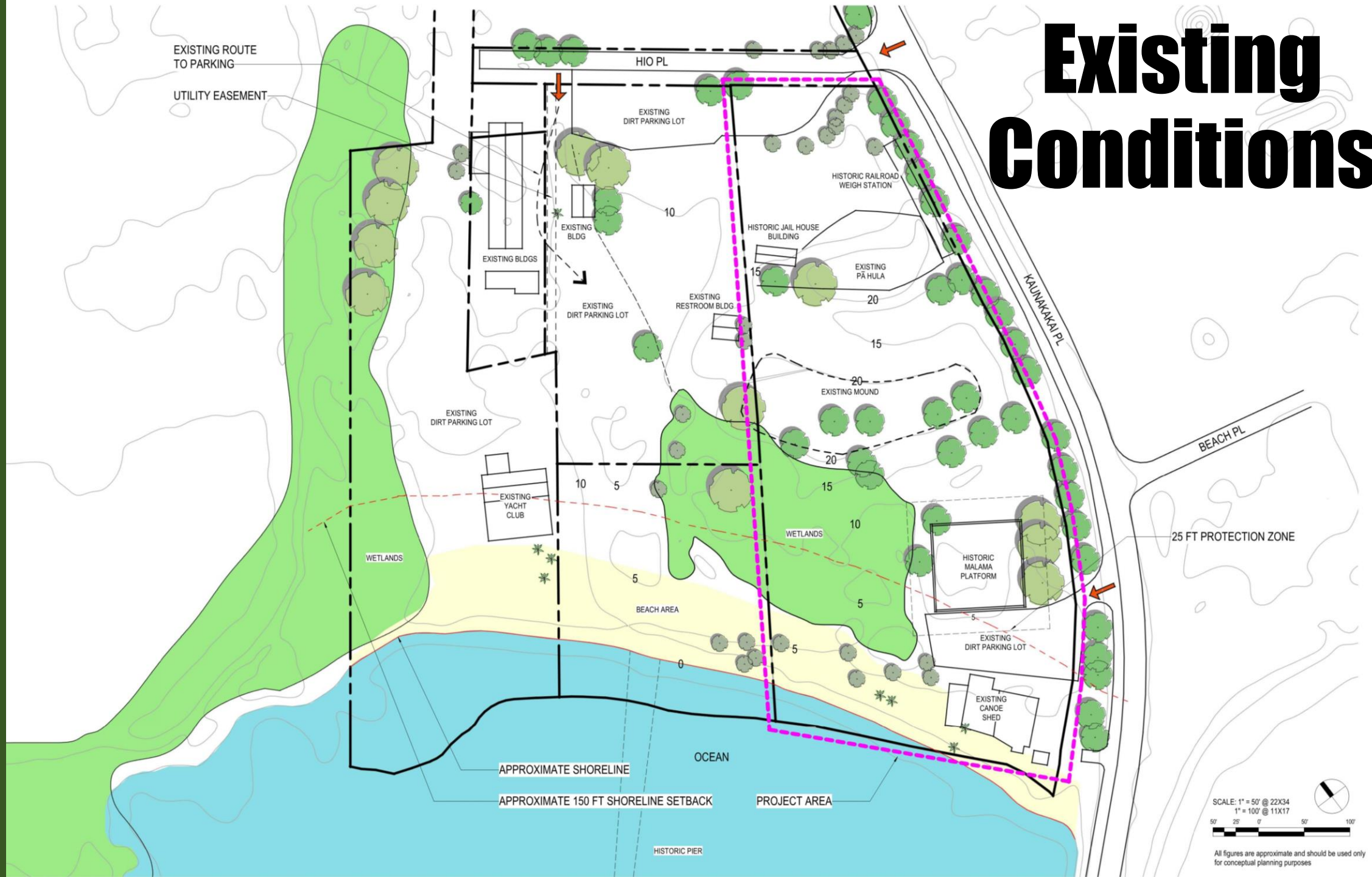
Malama Cultural Park is...

“ ”

Part 4

Explore Opportunities for Park Design

Existing Conditions





LEGEND

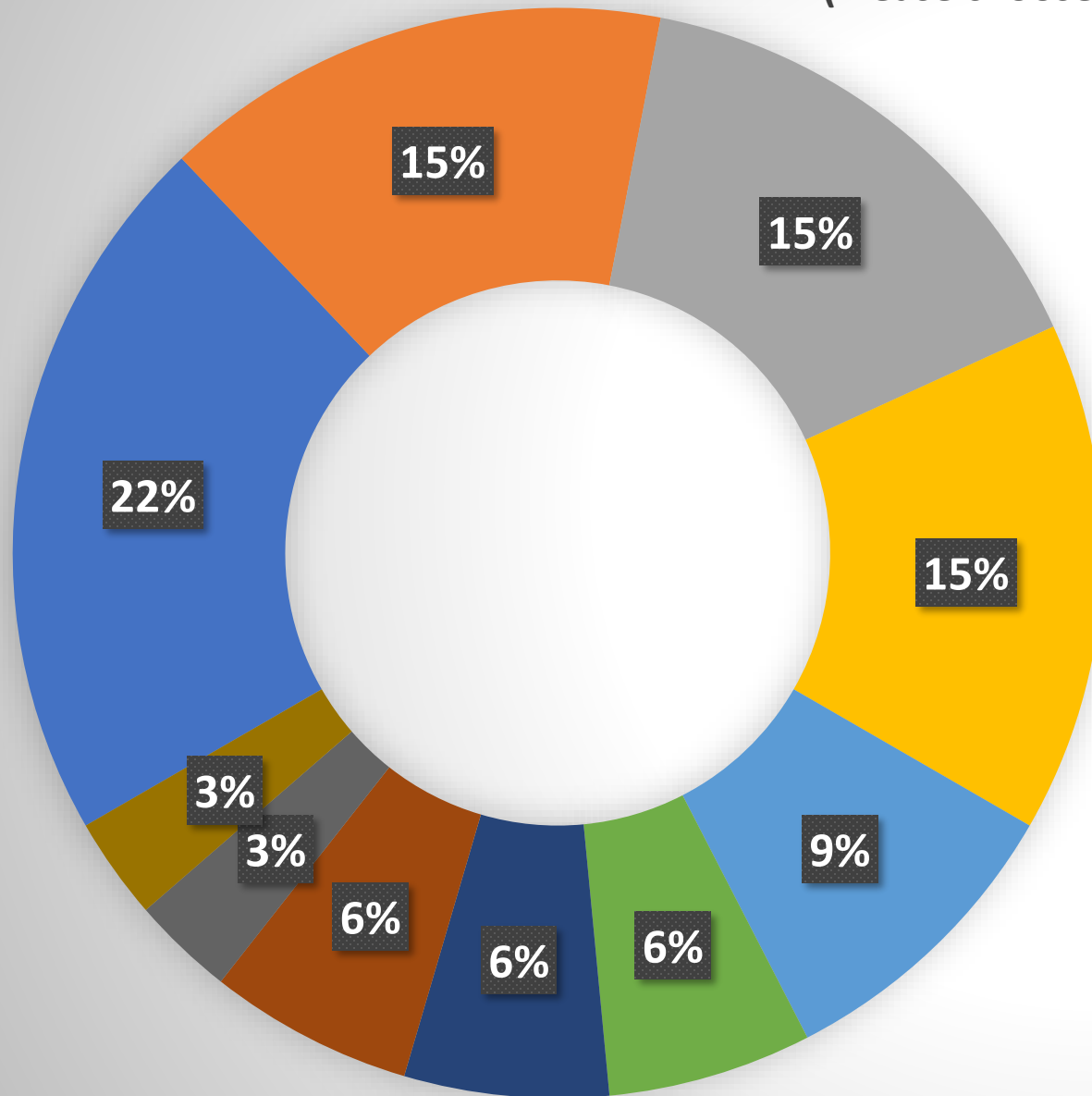
- FLOOD ZONE AE
- FLOOD ZONE VE
- BASE FLOOD ELEVATION = 8 FT EL
- ESTIMATED SHORELINE
- ESTIMATED 200 FT SHORELINE SETBACK
- 3.2 FT SEA LEVEL RISE INUNDATION AREA
- 10 EXISTING 5 FT CONTOUR LINES
- PROPERTY LINES
- HISTORIC SITES
- WETLANDS
- PROPOSED LIMITS OF PROJECT SCOPE
- EXISTING SITE ACCESS
- EXISTING TREES
- LOW LYING AREA (PONDING)

SCALE: 1" = 50' @ 22X34
1" = 100' @ 11X17

50 25 0 50 100

All figures are approximate and should be used only for conceptual planning purposes

Select your top 3 favorite things about the 1995 Plan that you'd like to see carried forward?
(Please choose only 3 answers)



- Hālau Hula Pavilion
- Kūpuna Area
- Hālau wa'a
- Hale Malama (visitor information center)
- Wetland restoration and overlook area
- Site Lighting (Public Safety / Security)
- Arts and Crafts Building
- Paved Parking
- Language Immersion School
- Beach Support Building

ASPHALT PAVED AREA, TYP

UTILITY EASEMENT

IMMERSION SCHOOL

CANOE HALAU

WETLAND OVERLOOK AREA

WETLANDS

APPROXIMATE SHORELINE

APPROXIMATE 150 FT SHORELINE SETBACK

HISTORIC PIER

BEACH AREA

EXISTING BLDGS

CARETAKER'S HOUSE

PARKING (68)

PICNIC AREA 10

5

0

OCEAN

5

10

15

20

15

20

15

15

HIO PL

PARKING (68)

PICNIC AREA 10

5

0

OCEAN

5

10

15

20

15

20

15

15

HIO PL

PARKING (68)

PICNIC AREA 10

5

0

OCEAN

5

10

15

20

15

20

15

15

HIO PL

PARKING (68)

PICNIC AREA 10

5

0

OCEAN

5

10

15

20

15

20

15

15

HIO PL

PARKING (68)

PICNIC AREA 10

5

0

OCEAN

5

10

15

20

15

20

15

15

HIO PL

PARKING (68)

PICNIC AREA 10

5

0

OCEAN

5

10

15

20

15

20

15

15

HIO PL

PARKING (68)

PICNIC AREA 10

5

0

OCEAN

5

10

15

20

15

20

15

15

HIO PL

PARKING (68)

PICNIC AREA 10

5

0

OCEAN

5

10

15

20

15

20

15

15

HIO PL

PARKING (68)

PICNIC AREA 10

5

0

OCEAN

5

10

15

20

15

20

15

15

HIO PL

PARKING (68)

PICNIC AREA 10

5

0

OCEAN

5

10

15

20

15

20

15

15

HIO PL

PARKING (68)

PICNIC AREA 10

5

0

OCEAN

5

10

15

20

15

20

15

15

HIO PL

PARKING (68)

PICNIC AREA 10

5

0

OCEAN

5

10

15

20

15

20

15

15

HIO PL

PARKING (68)

PICNIC AREA 10

5

0

OCEAN

5

10

15

20

15

20

15

15

HIO PL

PARKING (68)

PICNIC AREA 10

5

0

OCEAN

5

10

15

20

15

20

15

15

HIO PL

PARKING (68)

PICNIC AREA 10

5

0

OCEAN

5

10

15

20

15

20

15

15

HIO PL

PARKING (68)

PICNIC AREA 10

5

0

OCEAN

5

10

15

20

15

20

15

15

HIO PL

PARKING (68)

PICNIC AREA 10

5

0

OCEAN

5

10

15

20

15

20

15

15

HIO PL

PARKING (68)

PICNIC AREA 10

5

0

OCEAN

5

10

15

20

15

20

15

15

HIO PL

PARKING (68)

PICNIC AREA 10

5

0

OCEAN

5

10

15

20

15

20

15

15

HIO PL

PARKING (68)

PICNIC AREA 10

5

0

OCEAN

5

10

15

20

15

20

15

15

HIO PL

PARKING (68)

PICNIC AREA 10

5

0

OCEAN

5

10

15

20

15

20

15

15

HIO PL

PARKING (68)

PICNIC AREA 10

5

0

OCEAN

5

10

15

20

15

20

15

15

HIO PL

PARKING (68)

PICNIC AREA 10

5

0

OCEAN

5

10

15

20

15

20

15

15

HIO PL

PARKING (68)

PICNIC AREA 10

5

0

OCEAN

5

10

15

20

15

20

15

15

HIO PL

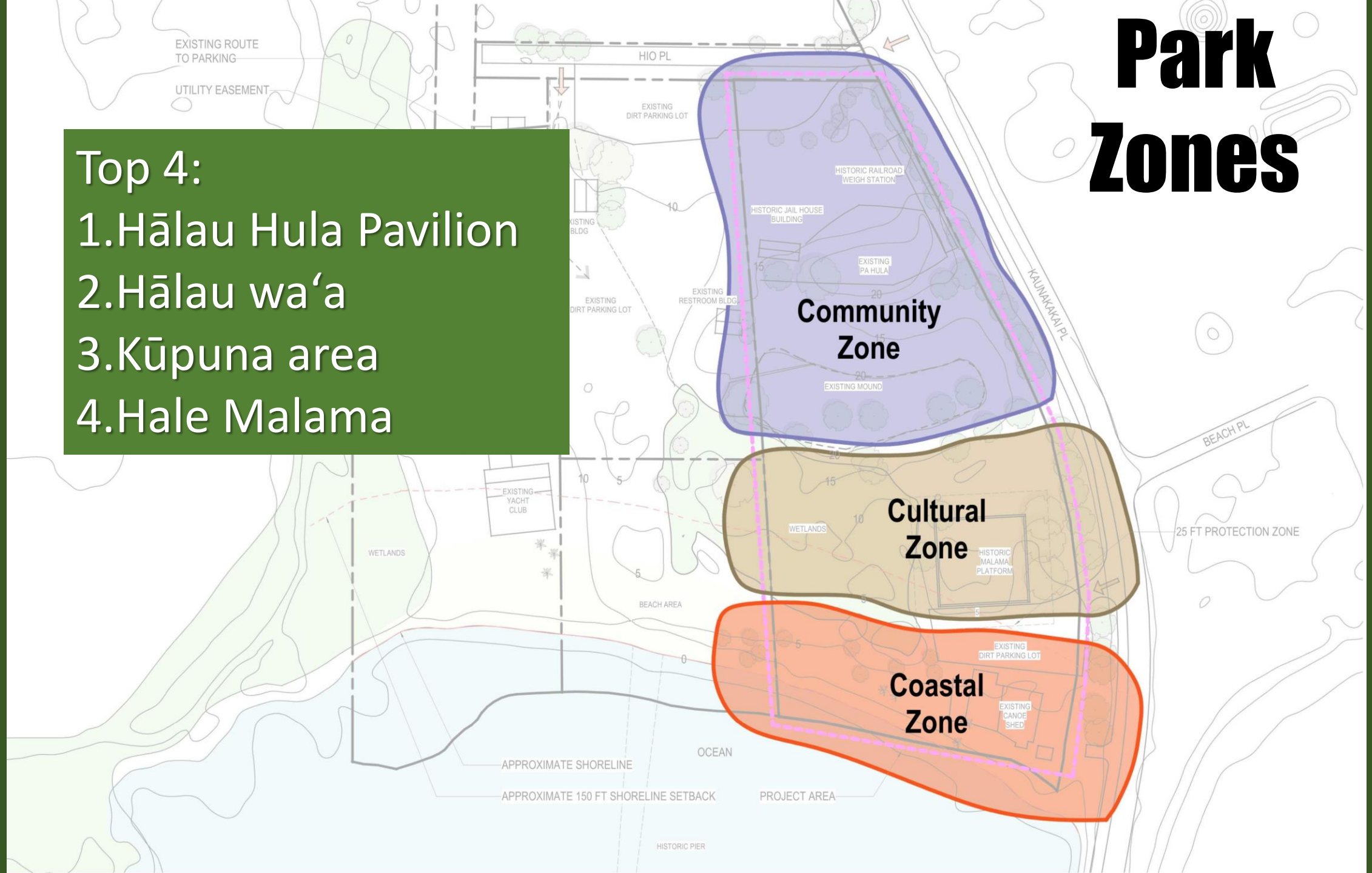
PARKING (68)

<

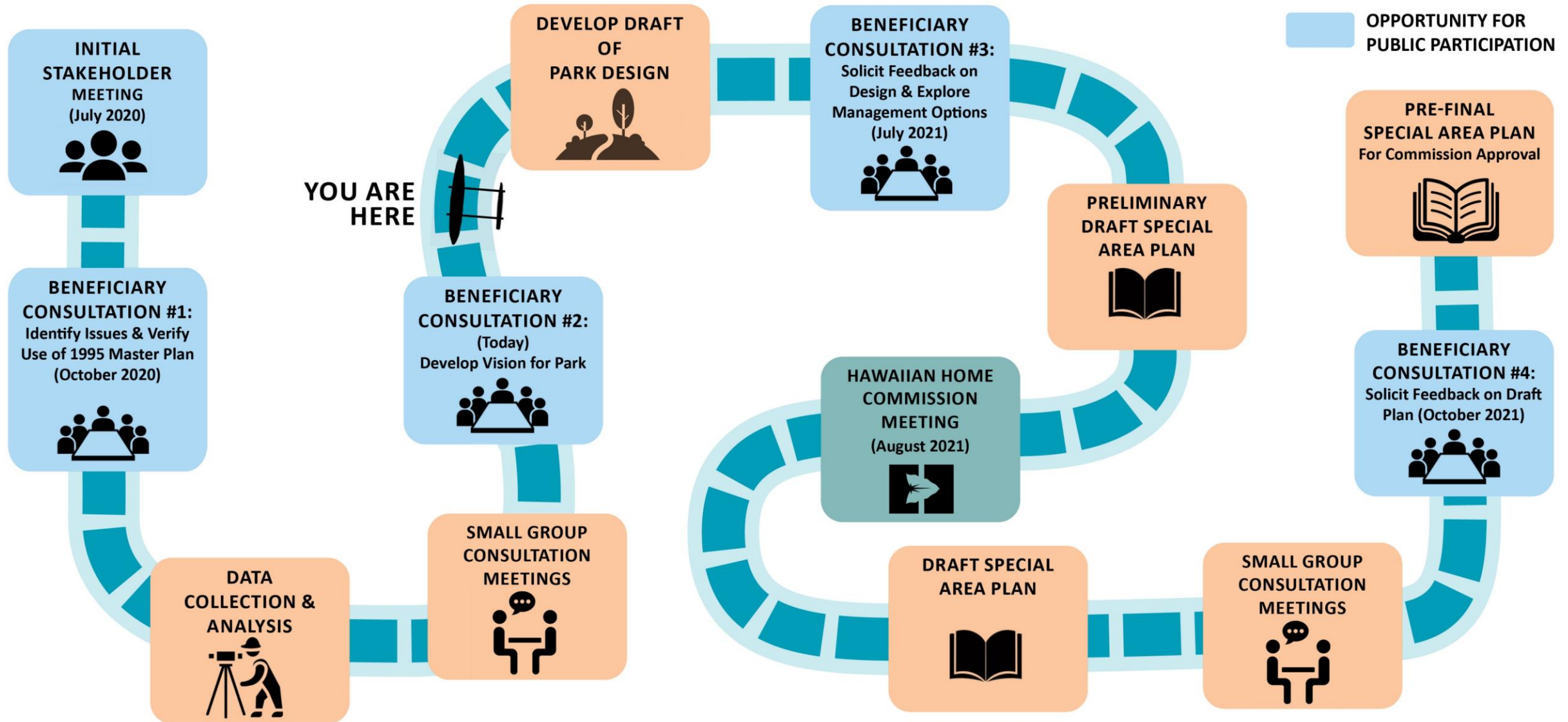
Park Zones

Top 4:

1. Hālau Hula Pavilion
2. Hālau wa'a
3. Kūpuna area
4. Hale Malama



Where Are We in The Community Planning Process?



Contact:

Kawika McKeague, AICP

Cody Winchester, DMHA, AICP

808-523-5866

MalamaCulturalPark@g70.design

<https://dhhl.hawaii.gov/po/special-area-plans/malama-cultural-park/>

QUESTIONS?

Pīpī a holo ka'ao...