



HAWAIIAN HOME LANDS

HAWAIIAN HOMES COMMISSION • DEPARTMENT OF HAWAIIAN HOME LANDS

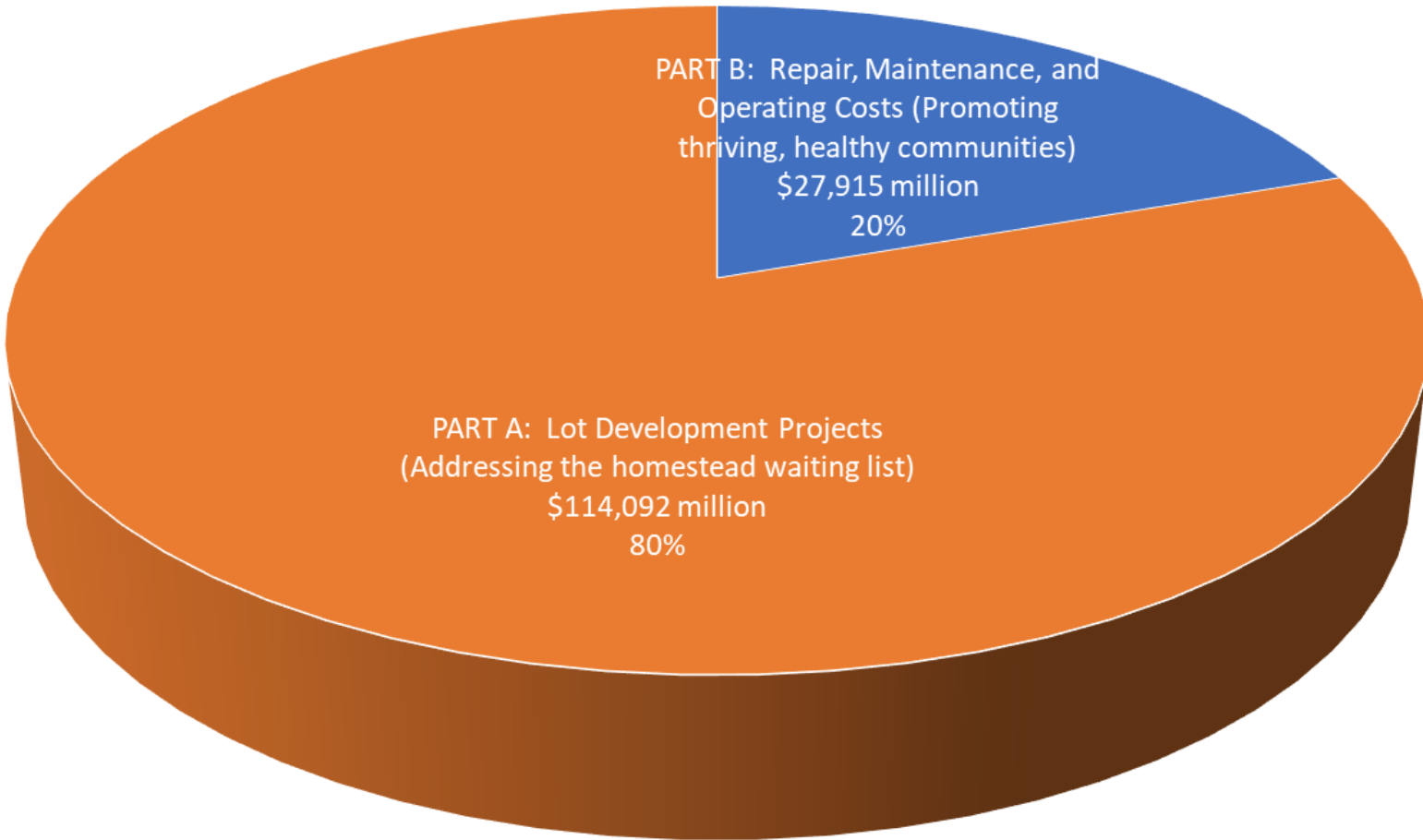
Hawaiian Homes Commission FY 22 Development Budget Workshop

June 18, 2021



Proposed FY22 Development Budget

Proposed Development Budget
Purpose 1 vs. Purpose 4

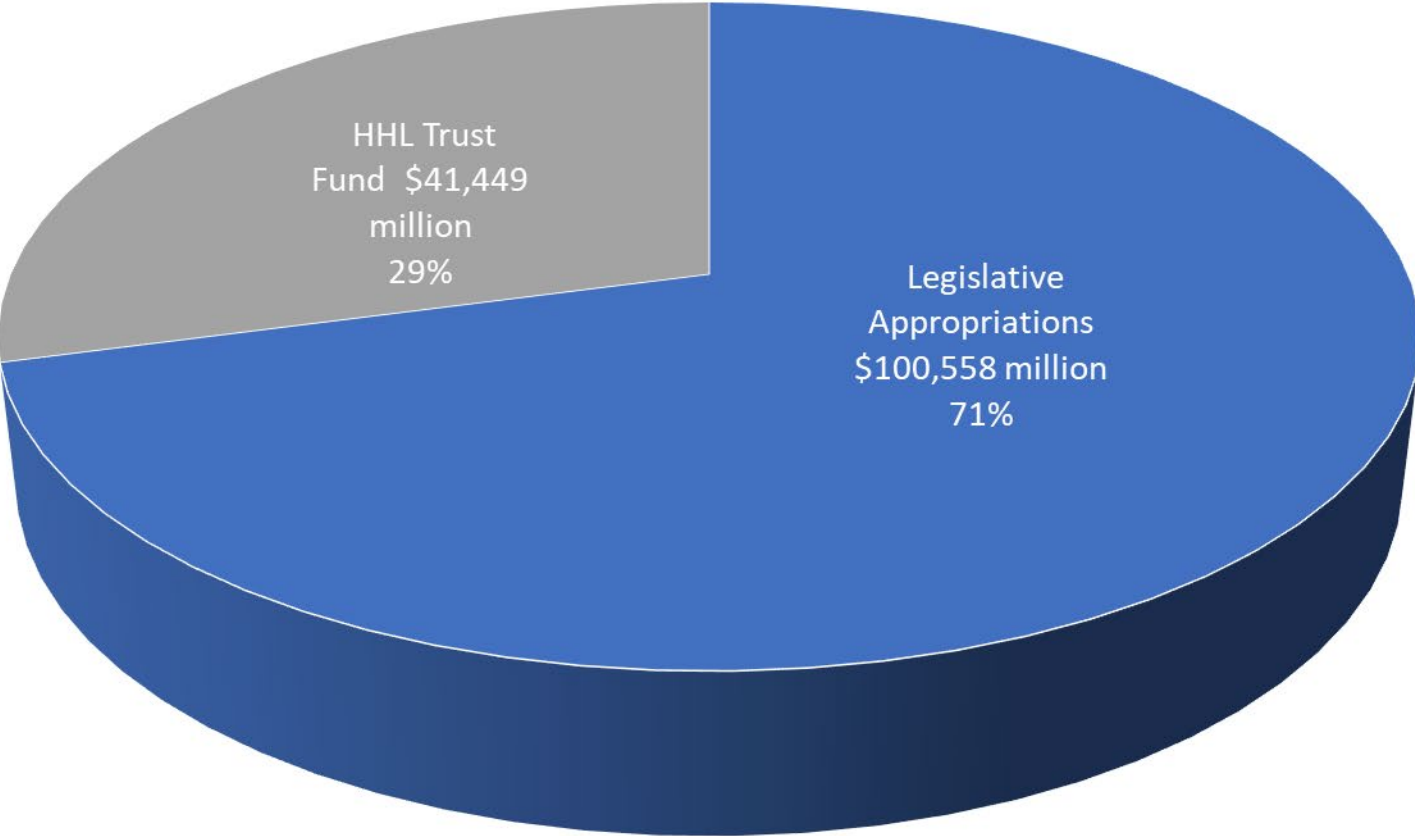


Total Budget Amount: \$142,007,000



Proposed FY22 Development Budget

Proposed Development Budget
By Source of Funds



Total Budget Amount: \$142,007,000



Purpose 1

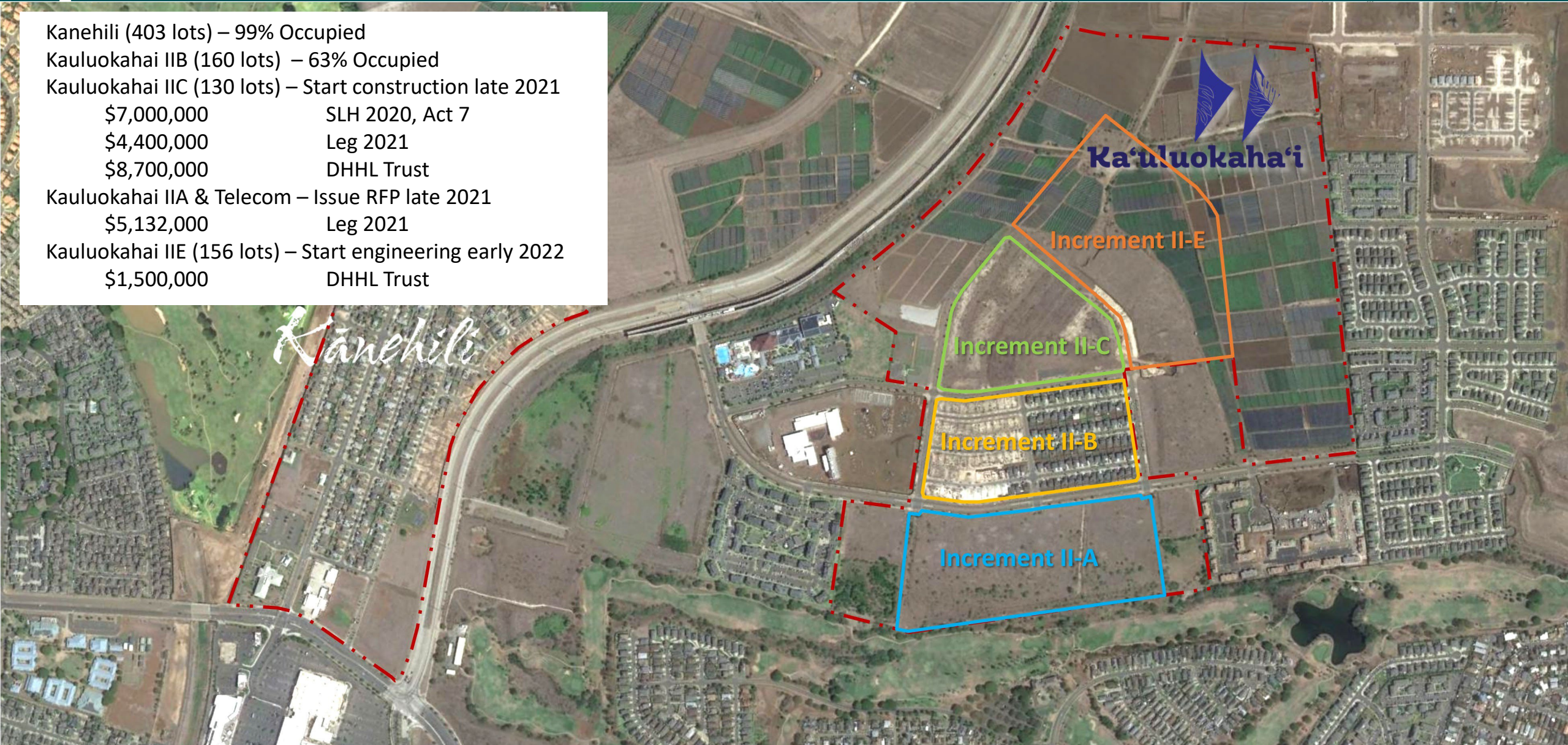
Purpose 1

Lot Development Projects
(Addressing the homestead waiting list)



East Kapolei, Oahu

Kanehili (403 lots) – 99% Occupied
Kauluokahai IIB (160 lots) – 63% Occupied
Kauluokahai IIC (130 lots) – Start construction late 2021
\$7,000,000 SLH 2020, Act 7
\$4,400,000 Leg 2021
\$8,700,000 DHHL Trust
Kauluokahai IIA & Telecom – Issue RFP late 2021
\$5,132,000 Leg 2021
Kauluokahai IIE (156 lots) – Start engineering early 2022
\$1,500,000 DHHL Trust





Waimanalo Agricultural and Residential Lots, Oahu



Borrow pit

Wong Farm (current)

Wong Farm (future)

75 – 125 lots (est.)

Plans / Designs: \$1,300,000

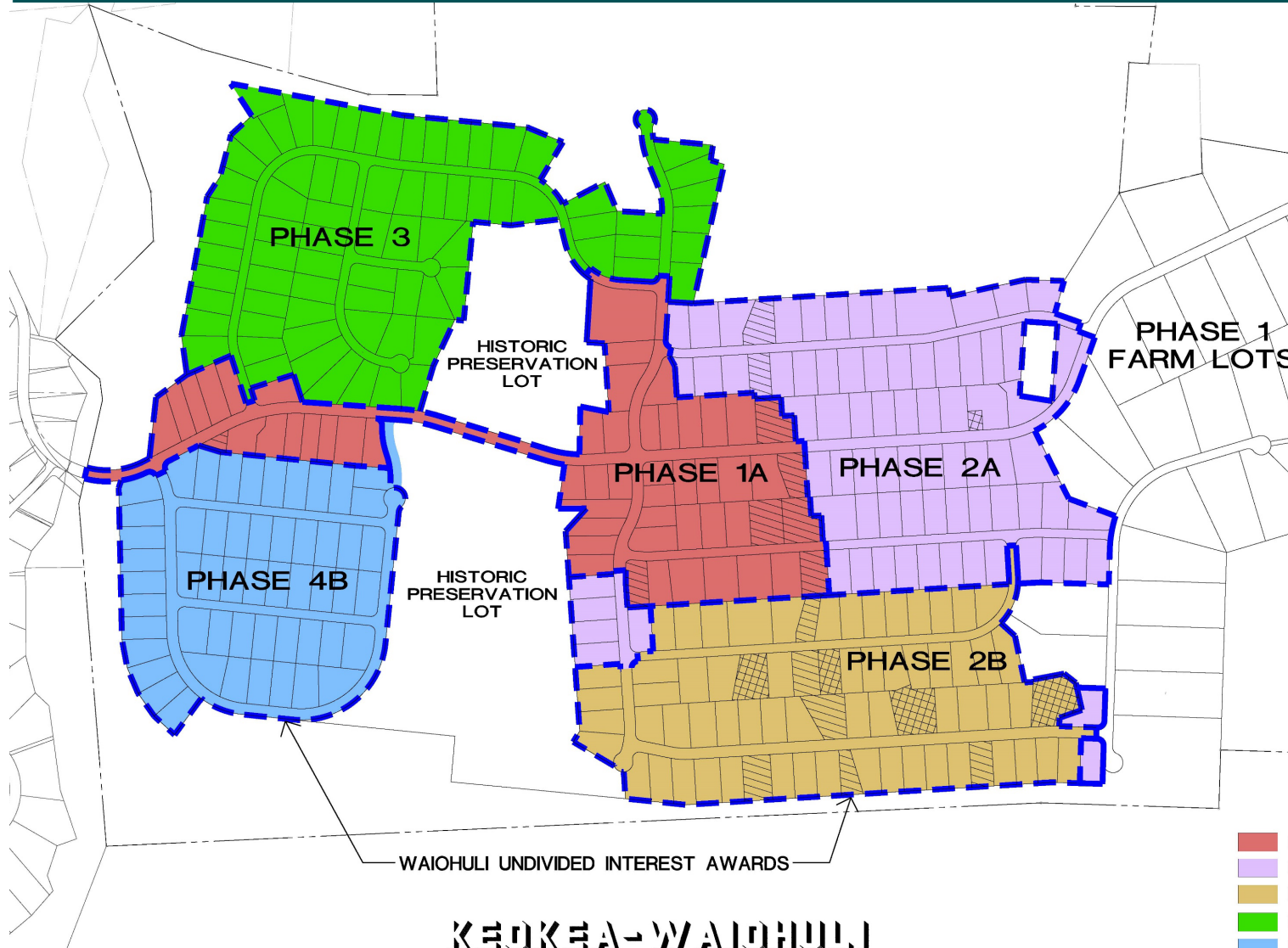
SLH 2017, Act 49, encumbered

Construction: \$1,200,000

SLH 2020, Act 6



Keokea-Waiohuli, Maui



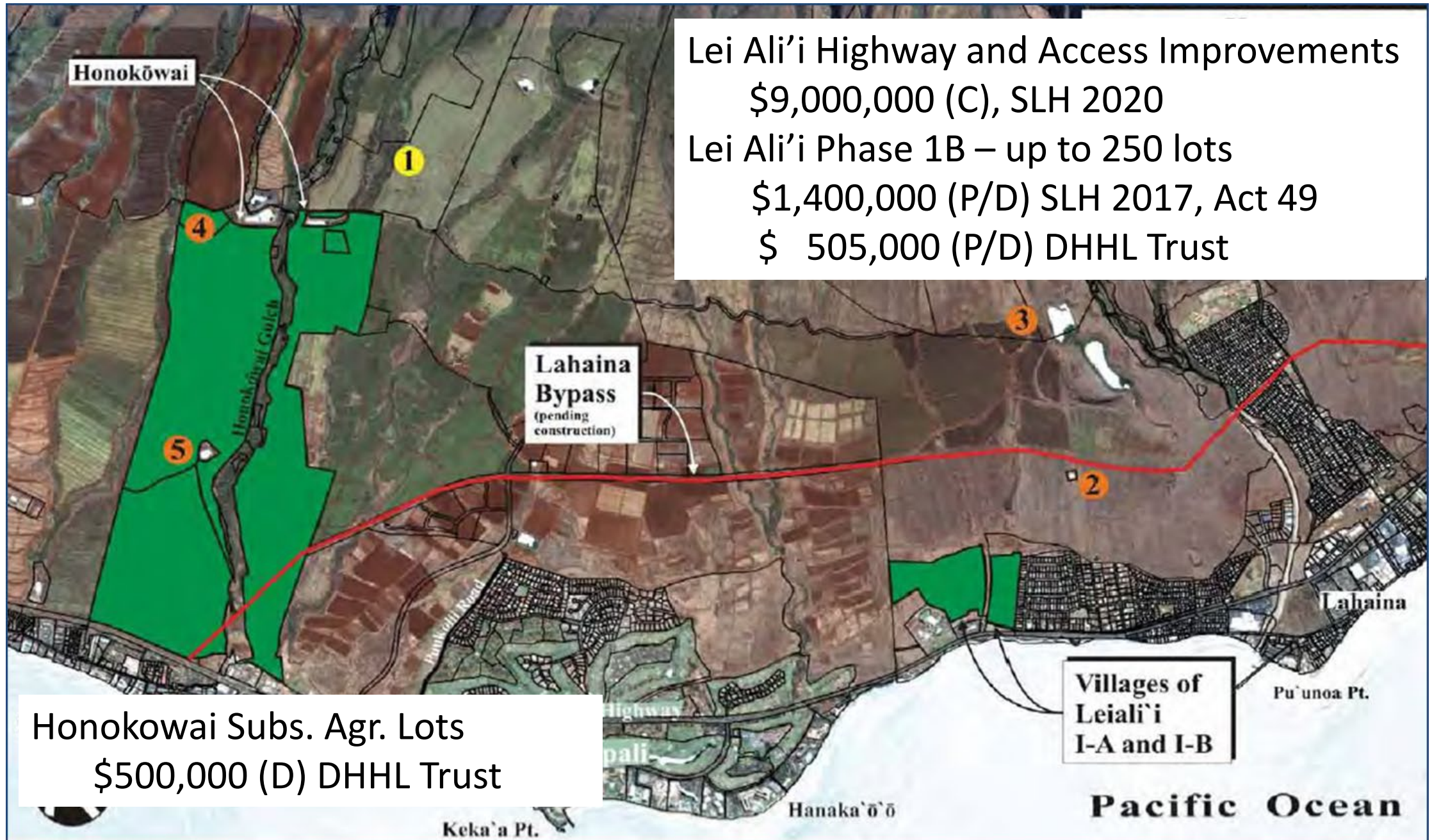
KEOKEA-WAIOHULI SUBDIVISION

Phase 2A – 44 lots
\$8,512,560 (encumbered)
SLH 2018, Act 53
SLH 2019, Act 40
Phases 2B – 76 lots
\$18,101,000
SLH 2019, Act 40
SLH 2020, HB200

LEGEND

PHASE 1A:	46	RESIDENTIAL LOTS
PHASE 2A:	76	RESIDENTIAL LOTS
PHASE 2B:	61	RESIDENTIAL LOTS
PHASE 3:	76	RESIDENTIAL LOTS
PHASE 4B:	53	RESIDENTIAL LOTS
TOTAL:	312	RESIDENTIAL LOTS

WEST MAUI DEVELOPMENT





Pulehunui Development, Maui



Wastewater System, \$17.5 million
SLH 2017, Act 49 (encumbered)
Water System, \$17.0 million
SLH 2020, HB 200



Pu'unani Homestead Subdivision, Maui

PU'UNANI HOMESTEAD SUBDIVISION

TMK: (2) 3-5-002-002 Wailuku, Maui

137 Turnkey lots, 24 Vacant lots

\$14,424,000 SLH 2020

\$ 4,000,000 Affordable Housing Credits





Hoolehua Agricultural Lots

Scattered Lots

Hoolehua Scattered Lots

Assess additional vacant lots
\$1,500,000, SLH 2020, Act 9
EA to commence late 2021

Na'iwa Agriculture Subdivision

58 lots
\$1,500,000, SLH 2020, Act 9
EA in process

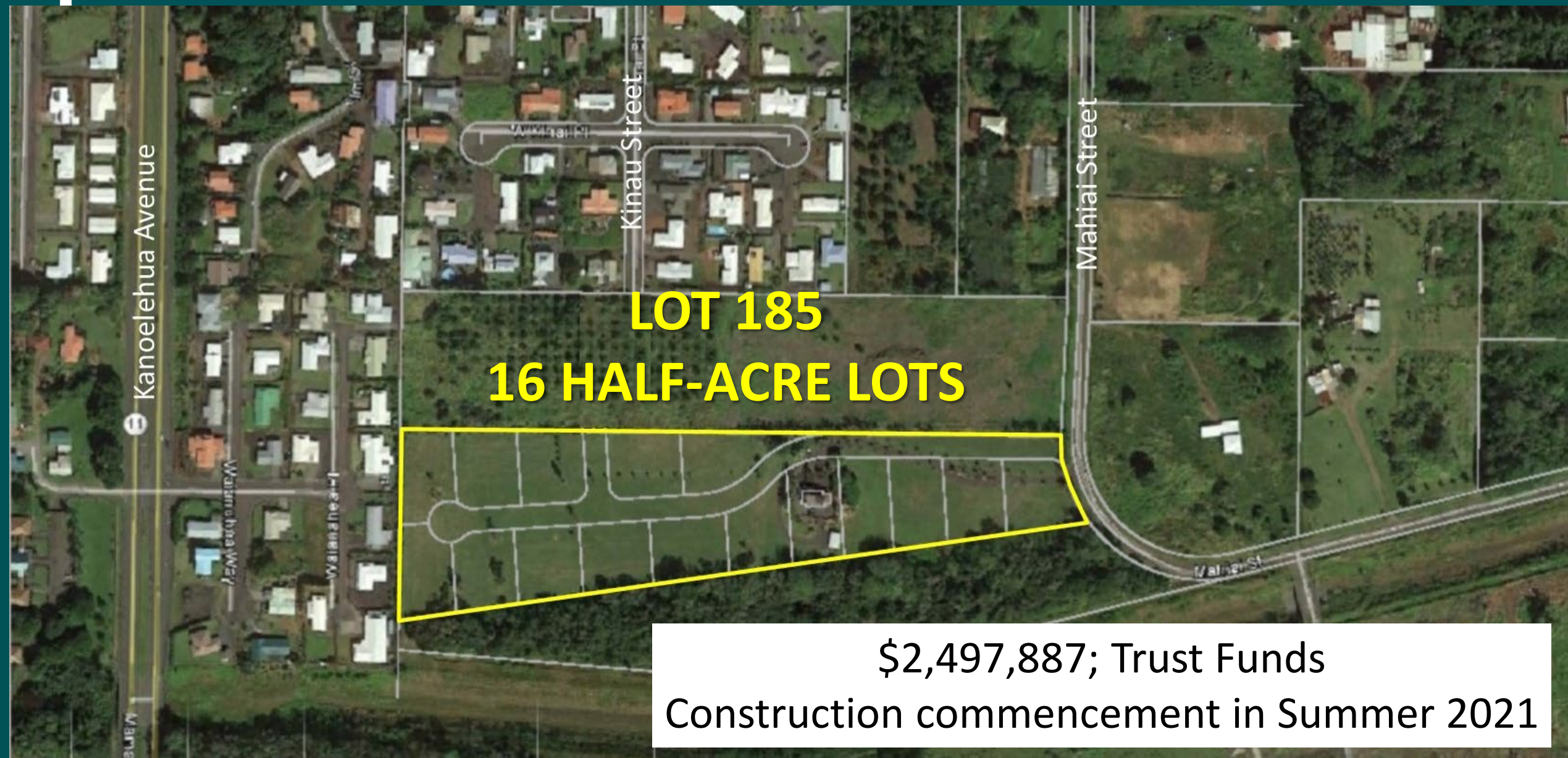
Na'iwa Agricultural
Subdivision



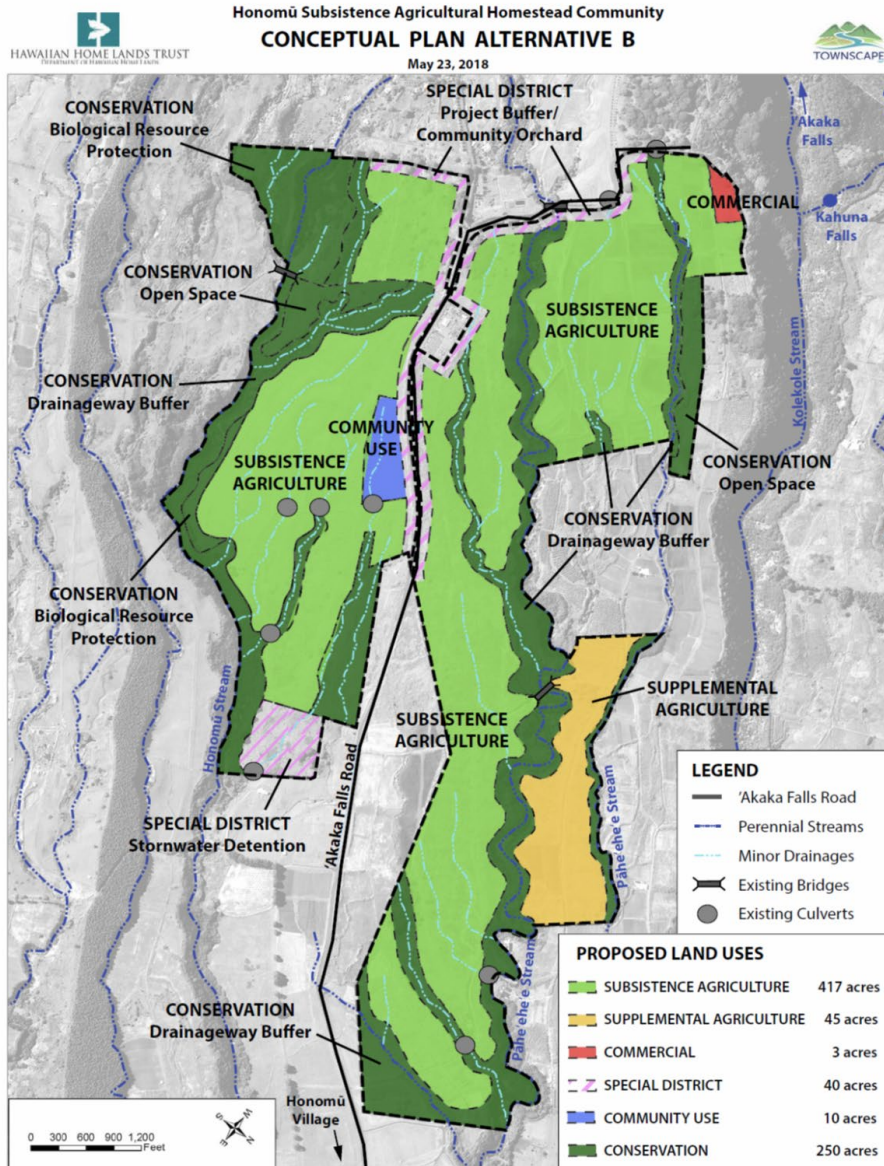
2 mi



Panaewa Subsistence Ag Lots, Hawaii



Honomu Subsistence Ag Lots, Hawaii



Phase 1 (16 lots)

\$2,642,388 (SLH 2019, Act 40)

Contracting in progress

Construction commencement late 2021

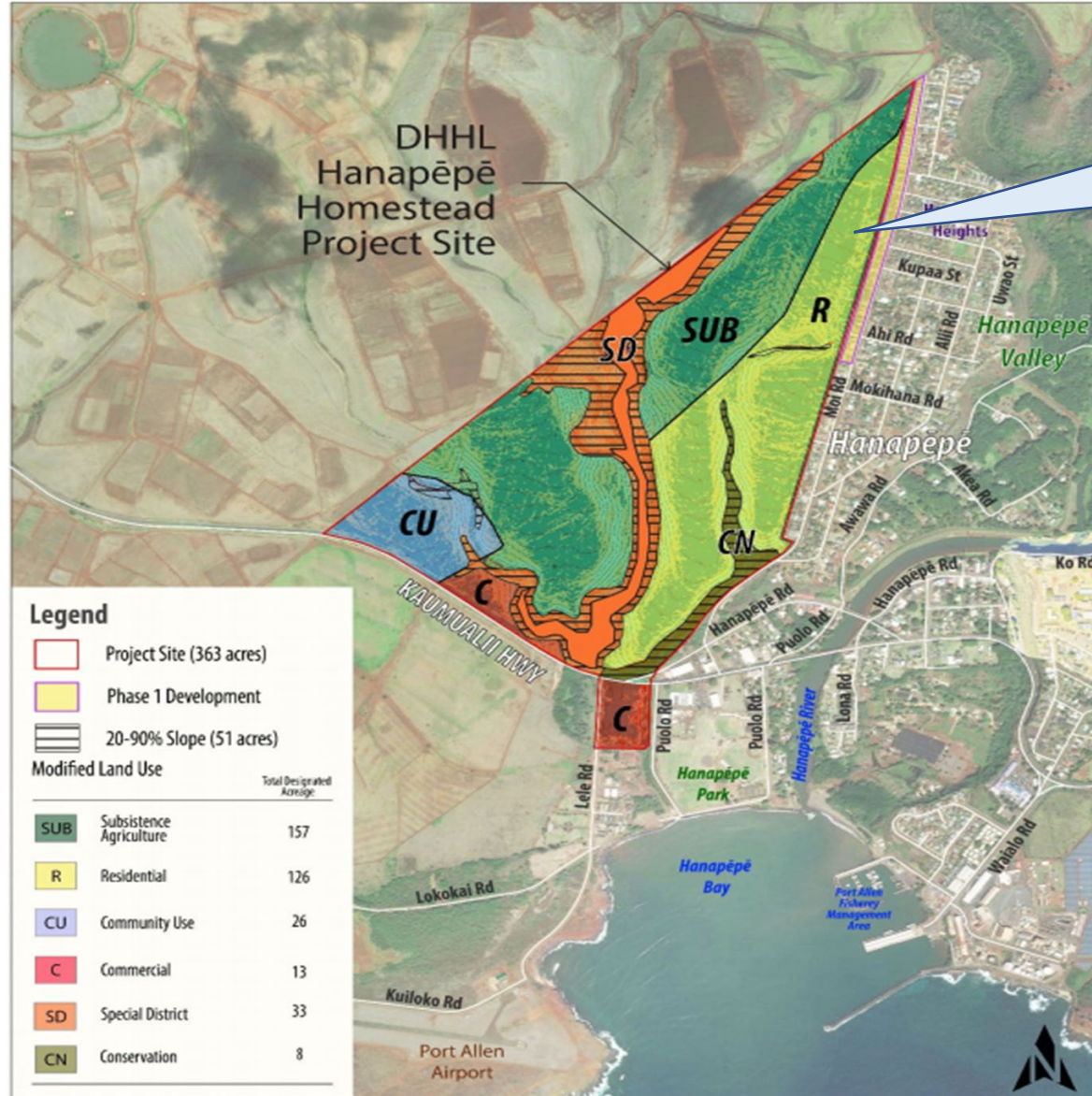
Phase 2 (25 lots)

Design and Construction

\$2,000,000 (SLH 2021 HB 200)



Hanapepe Residence Lots, Phase 2



Phase 2
75 Homestead lots

\$1,000,000, SLH 2017
Final EA Oct. 2020
Designs in progress

\$1,000,000, SLH 2021
Additional Design Fees



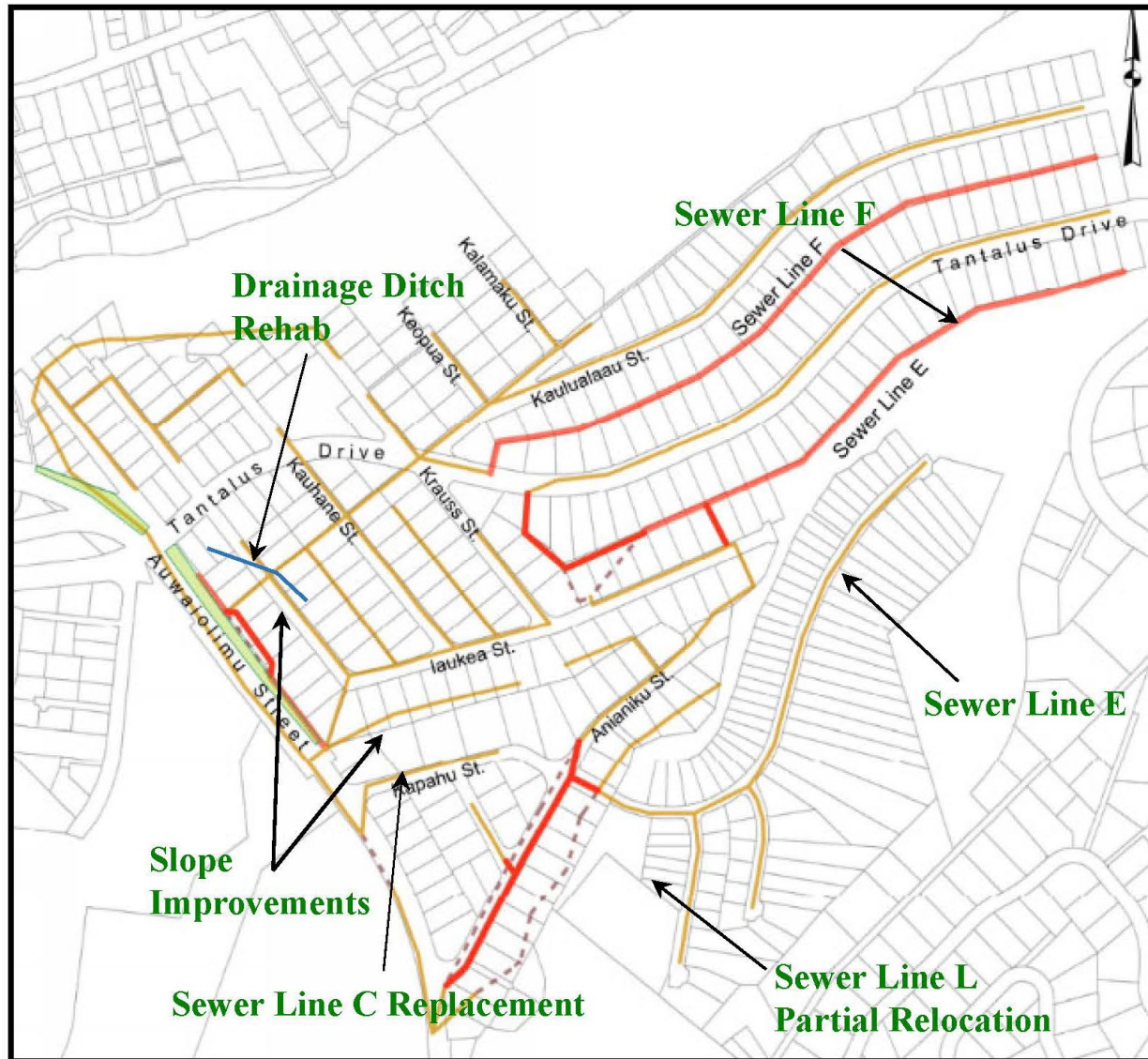
Purpose 4

Purpose 4

Repair, Maintenance, and Operating Costs
(Promoting thriving, healthy communities)



Papakolea Infrastructure Remediation



Phase 2A

Proposed FY 2022 Budget

\$2.8 million

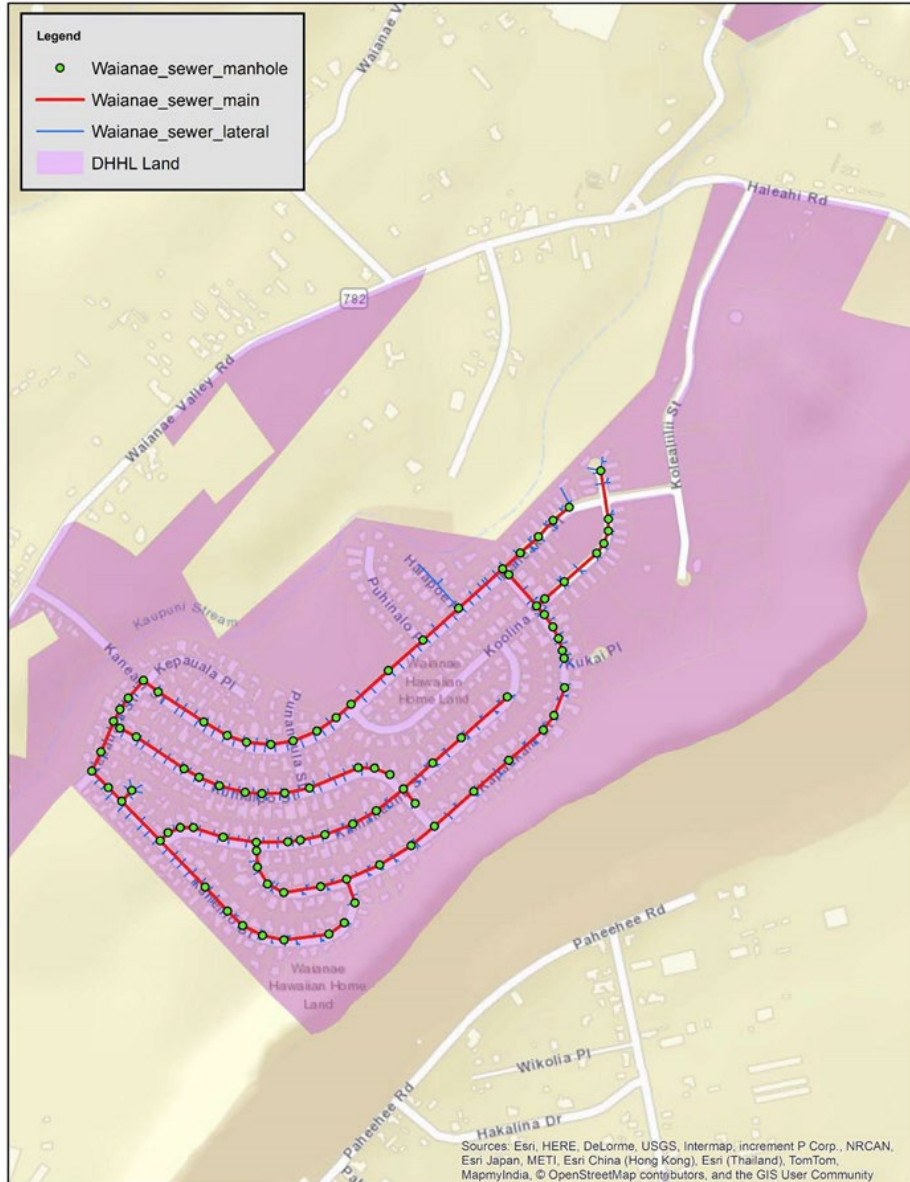
SLH 2020, Act 6

\$1.1 million

DHHL Trust



Waianae Sewer Improvements



Waianae Sewer System

Approximately 100 lots impacted

Inspections conducted mid-2020

Design complete – Spring 2021

Advertise for bids – Fall 2021

Proposed FY22 Budget:

\$1,080,000 (SLH 2020)



Waimanalo Drainage Improvements, Oahu



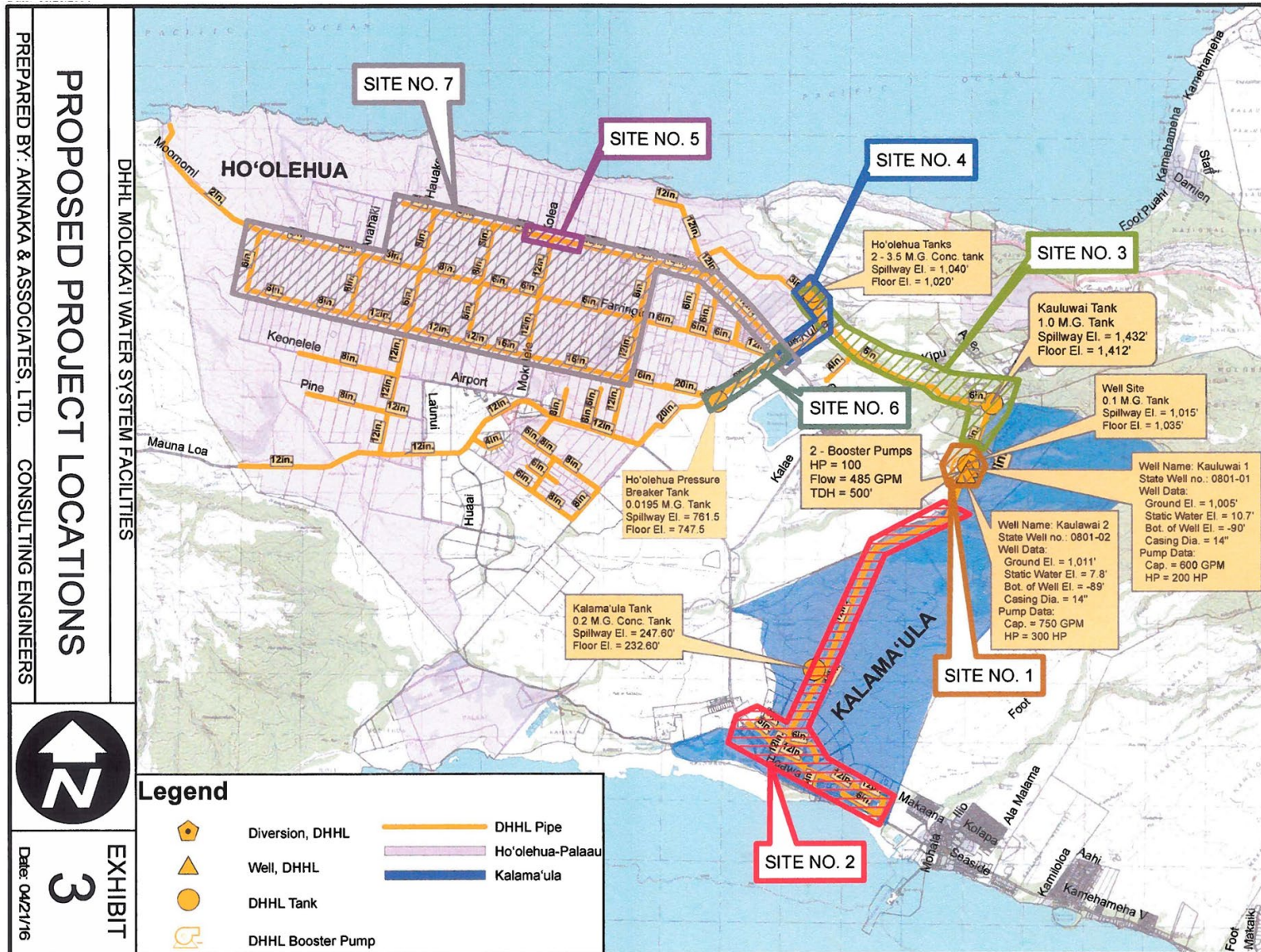
Waimanalo Flood Control Channel Improvements
Bid FY 2022 - \$2.25 million (SLH 2020, Act 19)

Bell Street Drainage Improvements
In designs

Waiokeola Stream & Drainage Channel Improvements
Contracting in Progress - \$1,230,123 (DHHL Trust)



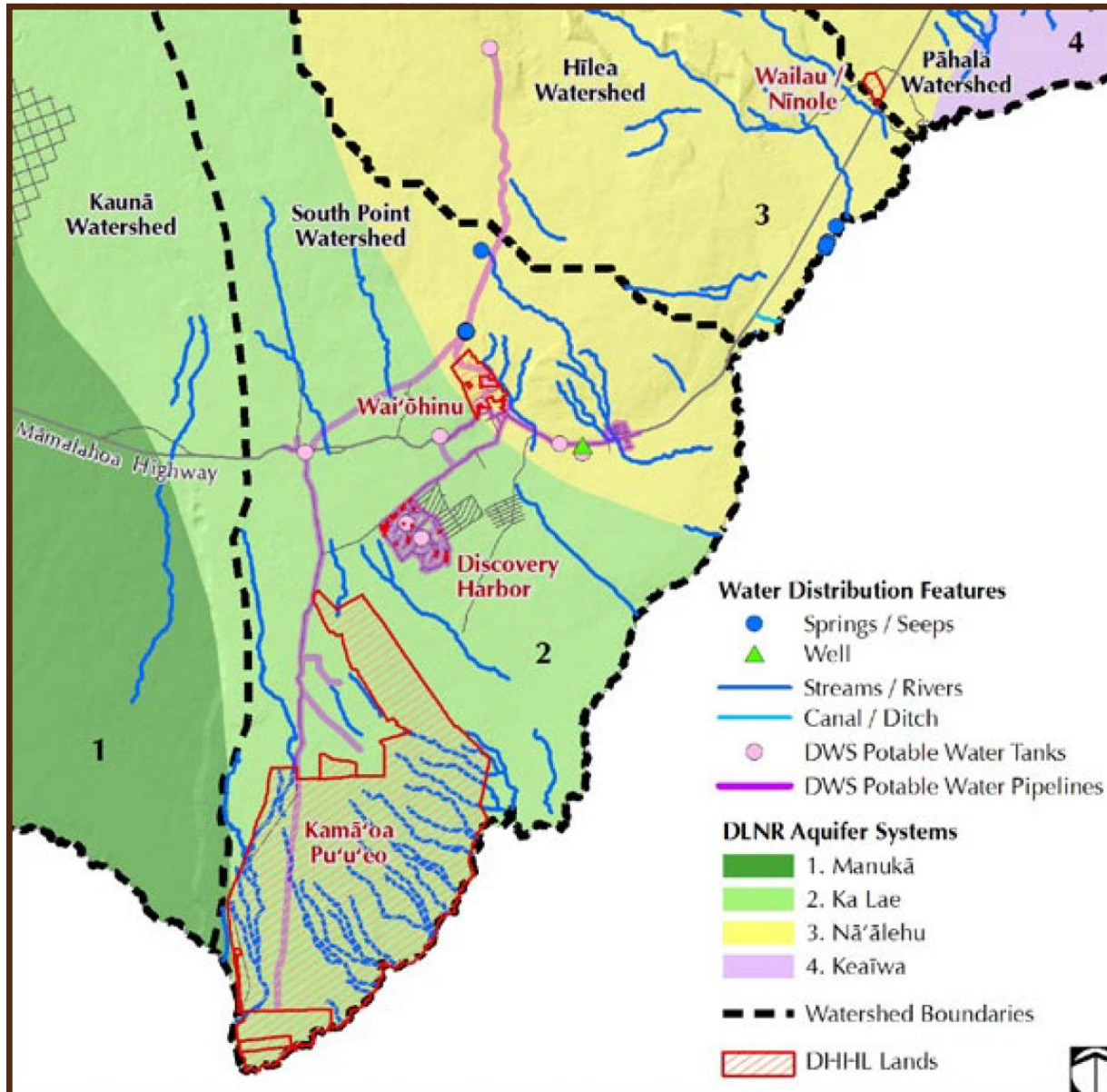
Molokai Water System



- DHHL Contribution: \$ 12,923,250
 - Legislative CIP: \$ 500,000
 - USDA Loan: \$ 7,455,000
 - USDA Grants: \$ 11,634,083
- Total Funds: \$ 31,362,333**



Ka'u Water System & Agricultural Lots, Hawaii

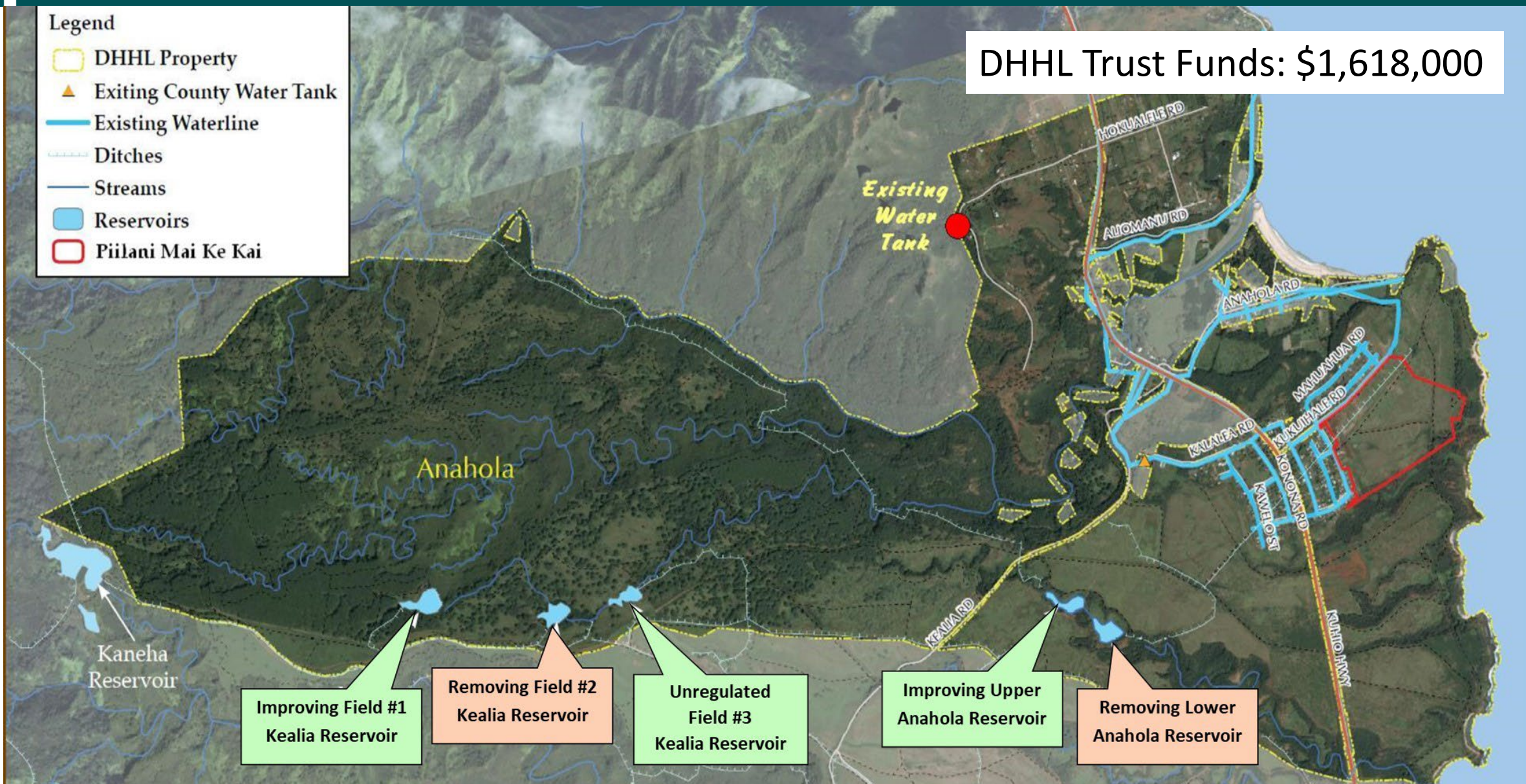


Ka'u Water System Improvements, Phase 1
\$2,736,327 (SLH 2020, Acts 19 & 20)
encumbered



Anahola Dam & Reservoir Improvements

DHHL Trust Funds: \$1,618,000





FY21 Project Highlights

- Hoolehua Water System (USDA)
 - Commencement of Kalamaula and Hoolehua improvements
 - Procured equipment and supplies
- Anahola Farm Lots Water System (USDA)
 - Commencement of Phase 1 waterlines and Phase 2 tanksite improvements
 - Met \$3,770,723 DHHL funding obligation
- Villages of Laiopua Hema procurement (USDA)
 - Contracting and certification in progress
- Naiwa Agriculture Subdivision
 - Initiated Environmental Assessment
- Subsistence Ag Program
 - Construction procurement for Honomu and Panaewa Subsistence Ag subdivision
- Kau Water System, Phase 1
 - Contract certification in progress

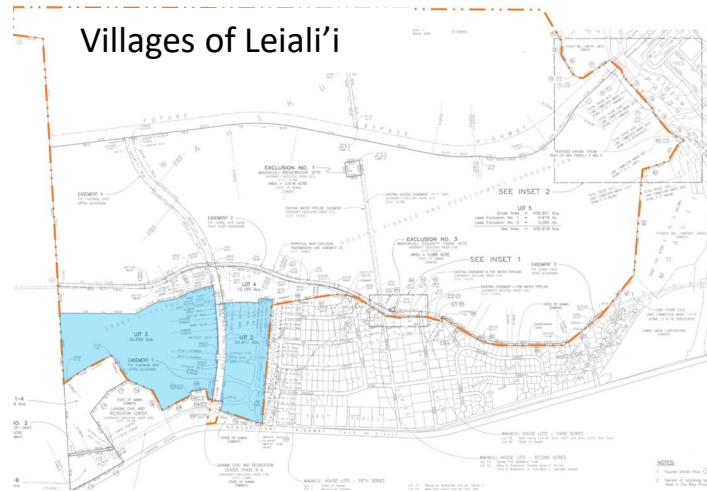


Village 8 of the Villages of Kapolei (Kaupea)

Villages of Leiali'i, Phases 1A and 1B

\$30 million over 15 years (amended to extend to 18 years)

Final payment! – January 2021





Mahalo



DEPARTMENT OF HAWAIIAN HOME LANDS

www.dhhl.hawaii.gov