



HAWAIIAN HOME LANDS

HAWAIIAN HOMES COMMISSION • DEPARTMENT OF HAWAIIAN HOME LANDS

# **Community Information Meeting**

**Papakōlea - Kewalo – Kalāwahine  
Community**

April 19, 2021



# Agenda

- Welcome
- Planning Office Update
- Construction Status Updates
- Board of Water Supply Update
- Homestead Associations



# Meeting Kuleana

- 1) Be respectful of the person talking – please do not interrupt the person that is talking;
- 2) Wait for the facilitator to call on you or type your question into the chat box
- 3) When addressing other participants (verbally or in the chat box), be respectful, show aloha, treat others how you would like to be treated;
- 4) Agree to disagree — accept that others may have different perspectives and opinions.
- 5) Have an open mind — take home new ideas or new information.

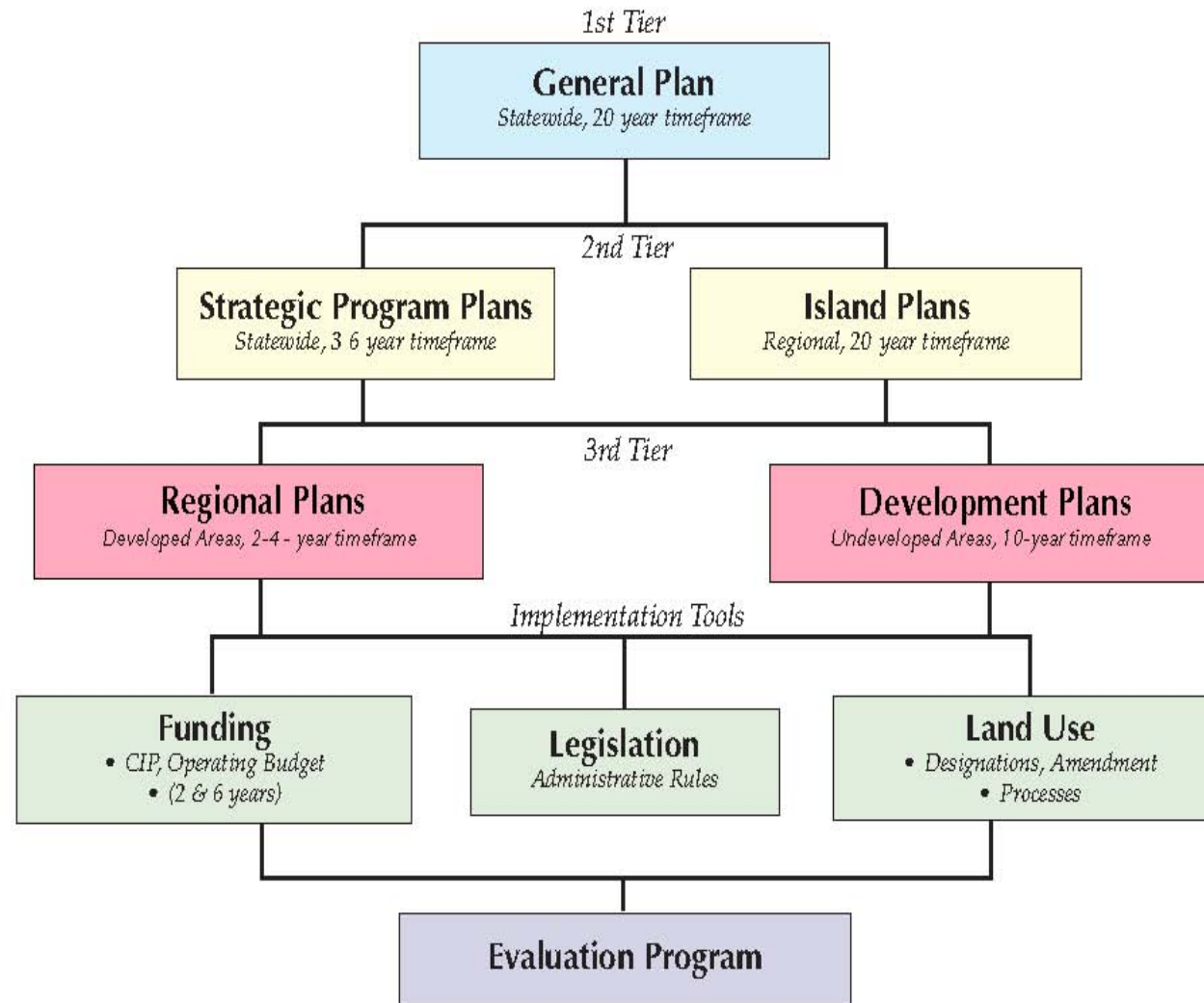


## **Planning Office Updates**





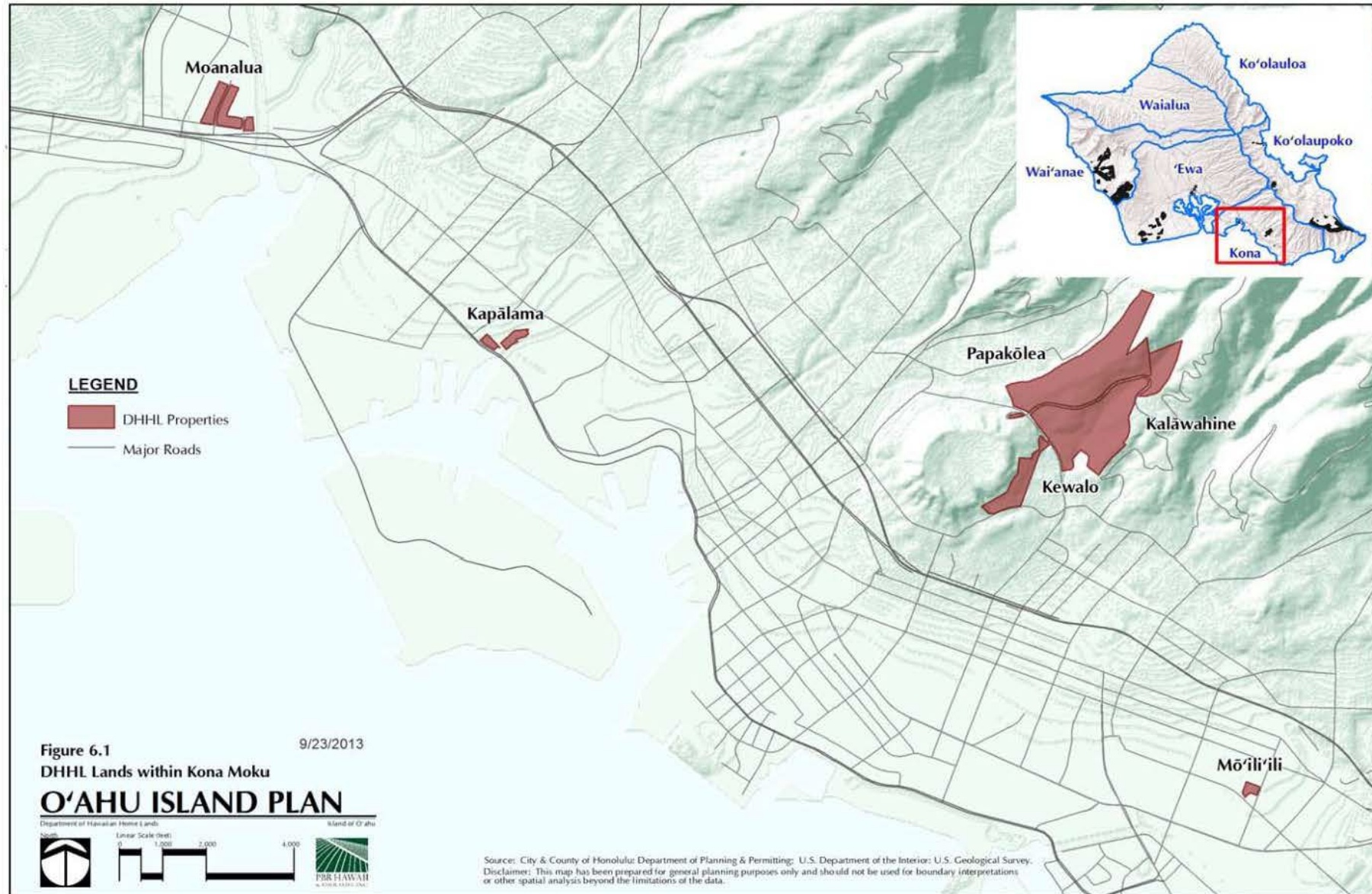
# DHHL Planning System



DHHL Planning System



# DHHL Landholdings: Kona Moku, O'ahu







# Moanalua, Kapālama and Mō‘ili‘ili

MOANALUA (15 acres)

KAPĀLAMA (5 acres)

- Industrial use
- Revenue generation
- Transit-oriented redevelopment opportunities



MOANALUA



KAPĀLAMA

MŌ‘ILI‘ILI (2 acres)

- Former Bowl-o-Drome site
- DHHL high-rise affordable rental project



MŌ‘ILI‘ILI



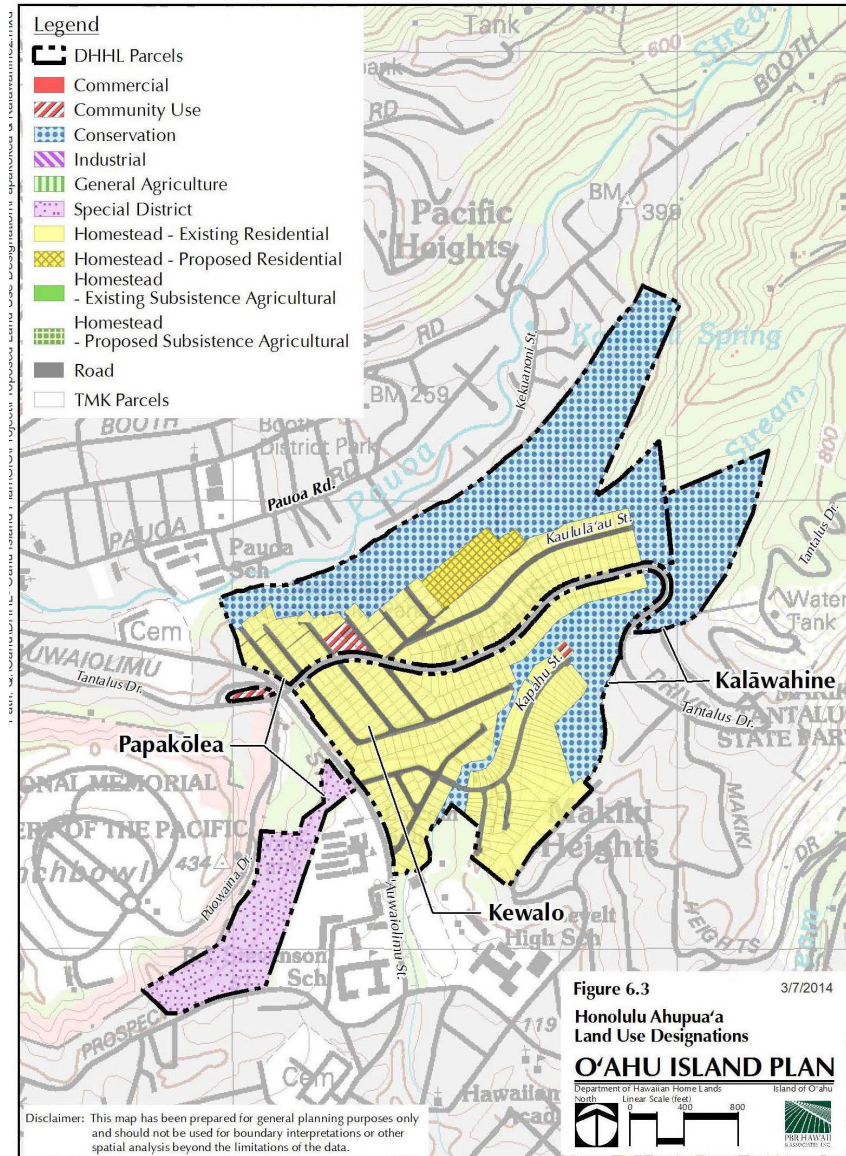


# Papakōlea Region

## PAPAKŌLEA REGIONAL PLAN UPDATE: HHC Adopted: July 2020

### VISION:

*“Papakōlea, Kewalo and Kalāwahine homesteads, collectively called the Papakōlea region, is a native Hawaiian community that thrives on the traditions and values set forth by its founding members, and serves as a place of growth and learning for current and future generations.”*







- Native Hawaiian Education and Culture  
Community Center / Hawaiian Homestead Kūpuna  
Supportive Living Center (combines two Priority  
Projects)
- Build a New Community Center
- Care Home for Kūpuna
- Traffic Safety Program



# **Construction Updates**

July 19, 2021



HAWAIIAN HOME LANDS

HAWAIIAN HOMES COMMISSION • DEPARTMENT OF HAWAIIAN HOME LANDS

## **2403 Kaululaa St Rock Wall**





# 2403 Kaululaau St Rock Wall

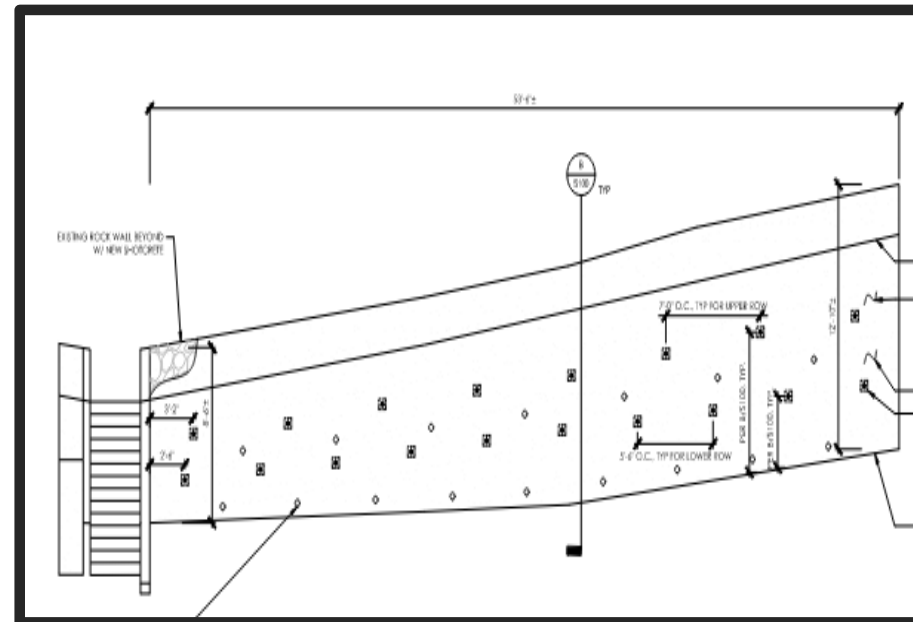
Wall Stabilization- Soil Nails, Shotcrete, Drainage







- Rock wall is leaning, so soil nails will tie back wall and shotcrete will strengthen wall face
- Drainage will be added to also help reduce loads on the wall
- Estimated Construction Cost: ~\$300,000





HAWAIIAN HOME LANDS

HAWAIIAN HOMES COMMISSION • DEPARTMENT OF HAWAIIAN HOME LANDS

# **2147 Tantalus Drive Rock Wall**



# 2147 Tantalus Drive Rock Wall

Wall Stabilization- Soil Nails, Shotcrete, Drainage





- Rock wall is leaning, so soil nails will tie back wall and shotcrete will strengthen wall face
- Drainage will be added to also help reduce loads on the wall
- Estimated Construction Cost: ~\$800,000







HAWAIIAN HOME LANDS

HAWAIIAN HOMES COMMISSION • DEPARTMENT OF HAWAIIAN HOME LANDS

# **Kapahu Street Rockfall Improvements**

# **Iaukea Street Drainage Improvements**





# Kapahu St Rockfall Slope Improvements







# **Temporary Construction Access & Permanent Slope Access Points**



# 601 & 605 Iaukea Street









# 601 & 605 Iaukea Street





HAWAIIAN HOME LANDS

HAWAIIAN HOMES COMMISSION • DEPARTMENT OF HAWAIIAN HOME LANDS

# **Kapahu Street Rockfall Improvements**

# **Iaukea Street Drainage Improvements**





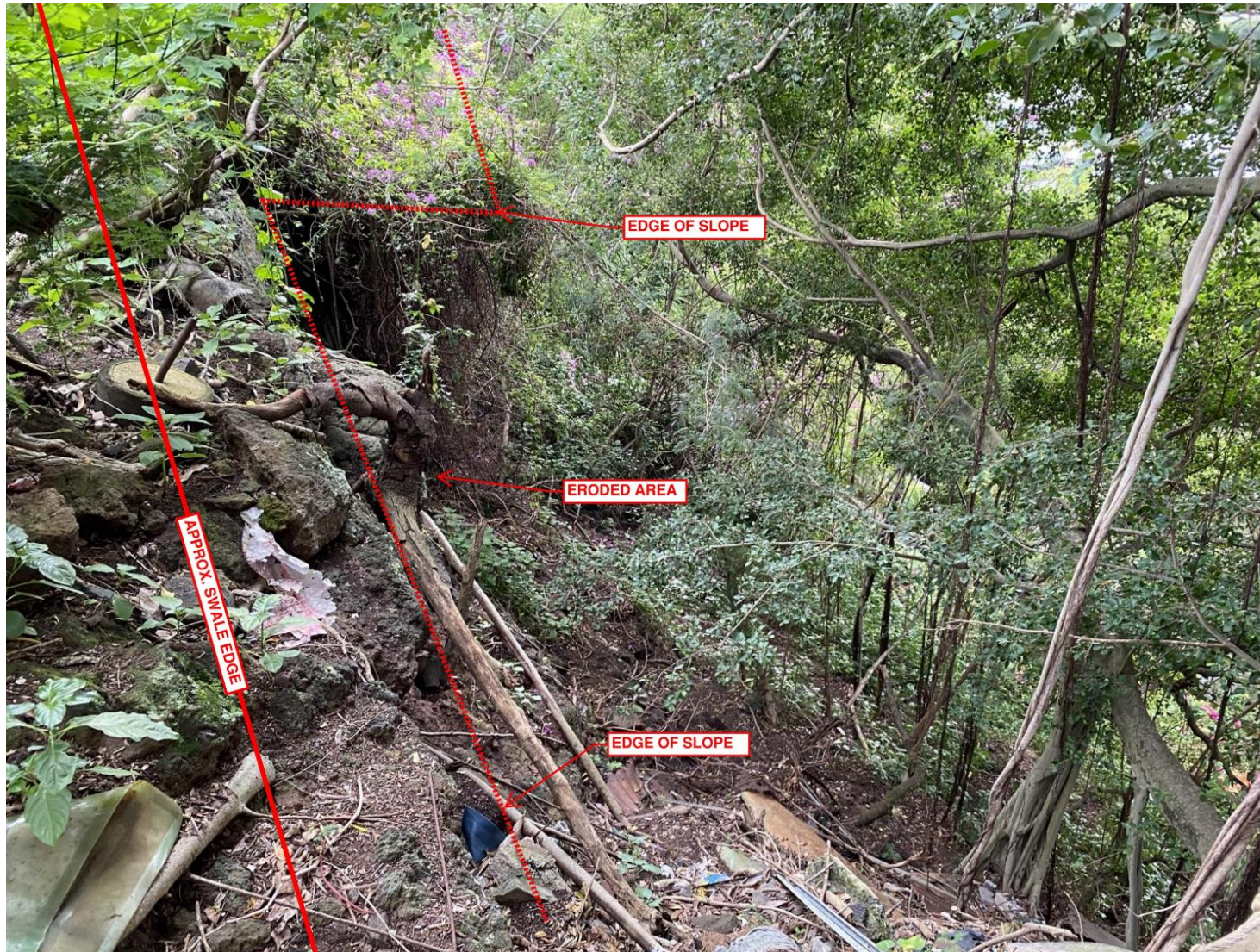
# 601 & 605 Iaukea Street







# 601 & 605 Iaukea Street



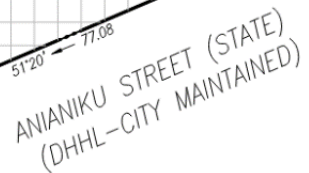




# 2218 Anianiku Street









# 2218 Anianiku Street







# 2218 Anianiku Street





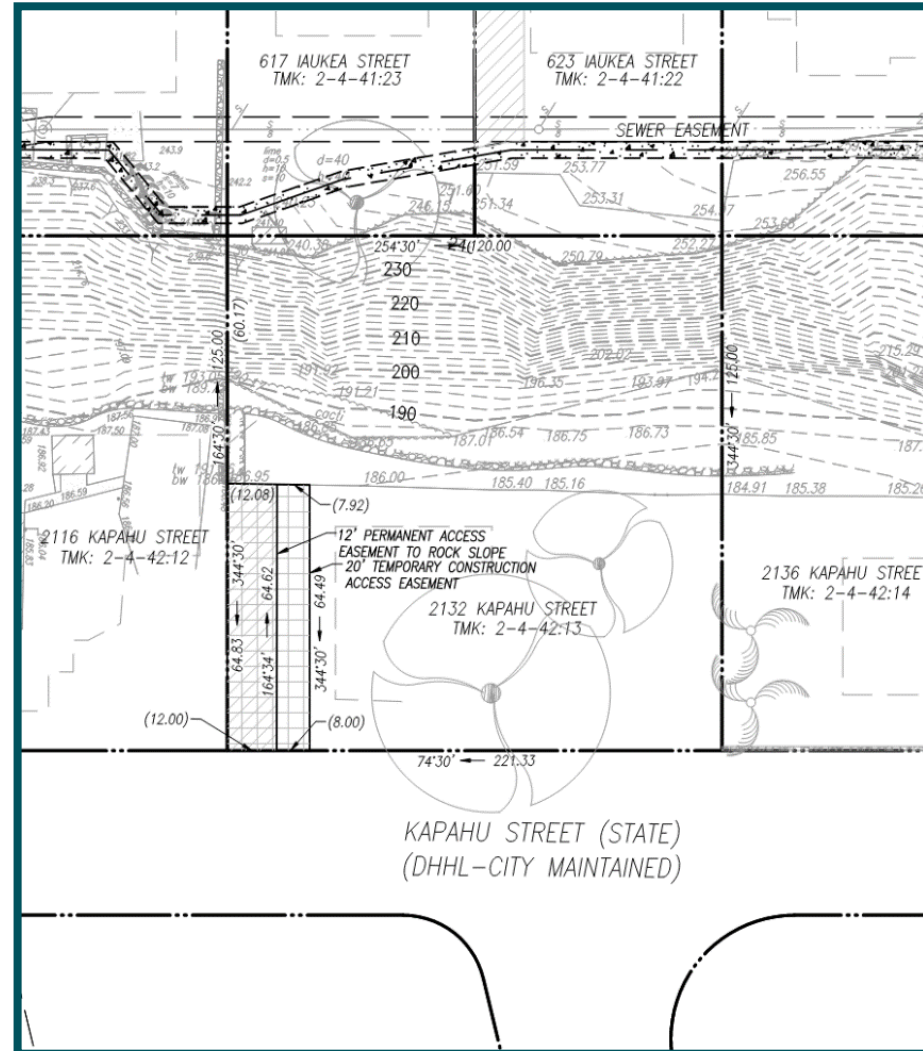


# 2132 Kapahu Street





# 2132 Kapahu Street



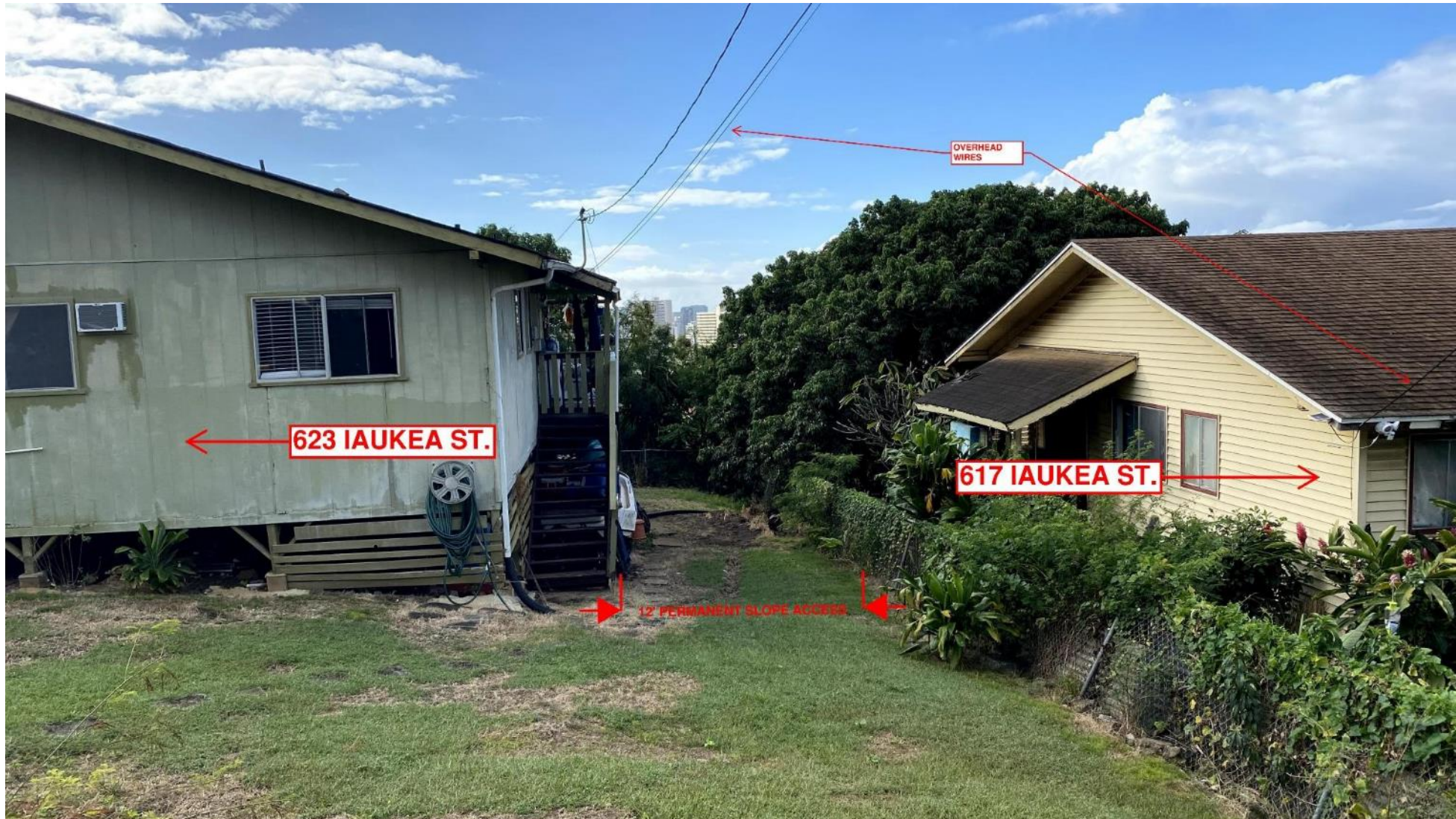


# **Permanent Access Points**



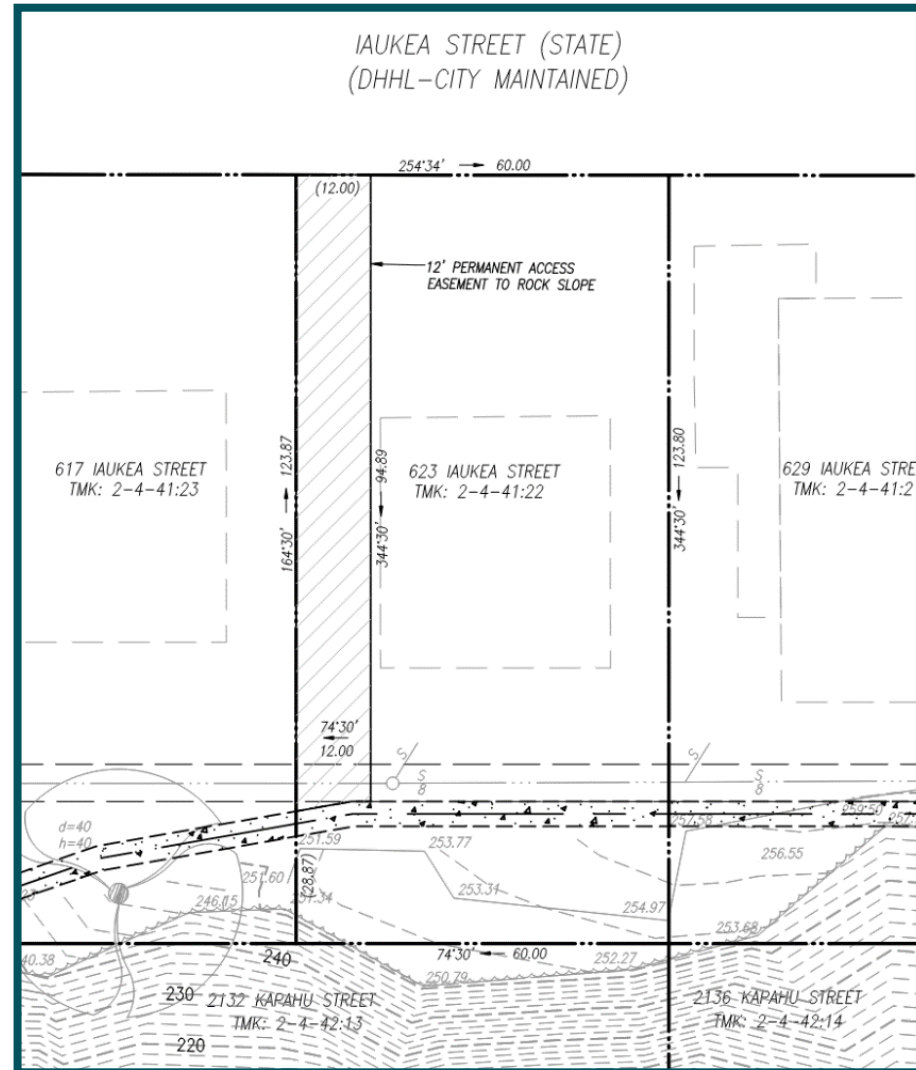


# 623 Iaukea Street





# 623 Iaukea Street







# 623 Iaukea Street







# 653 Iaukea Street



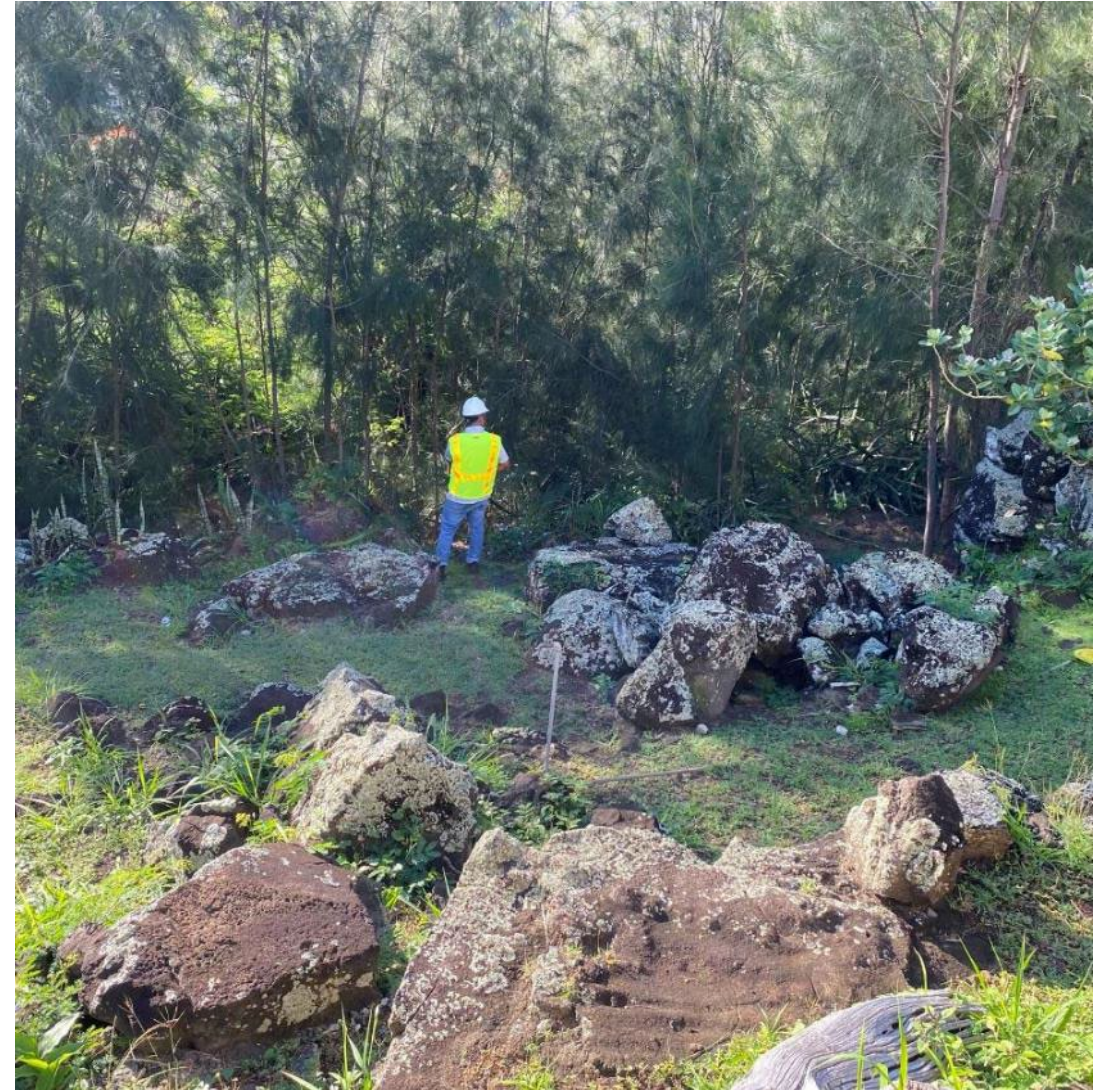








# 623 Iaukea Street







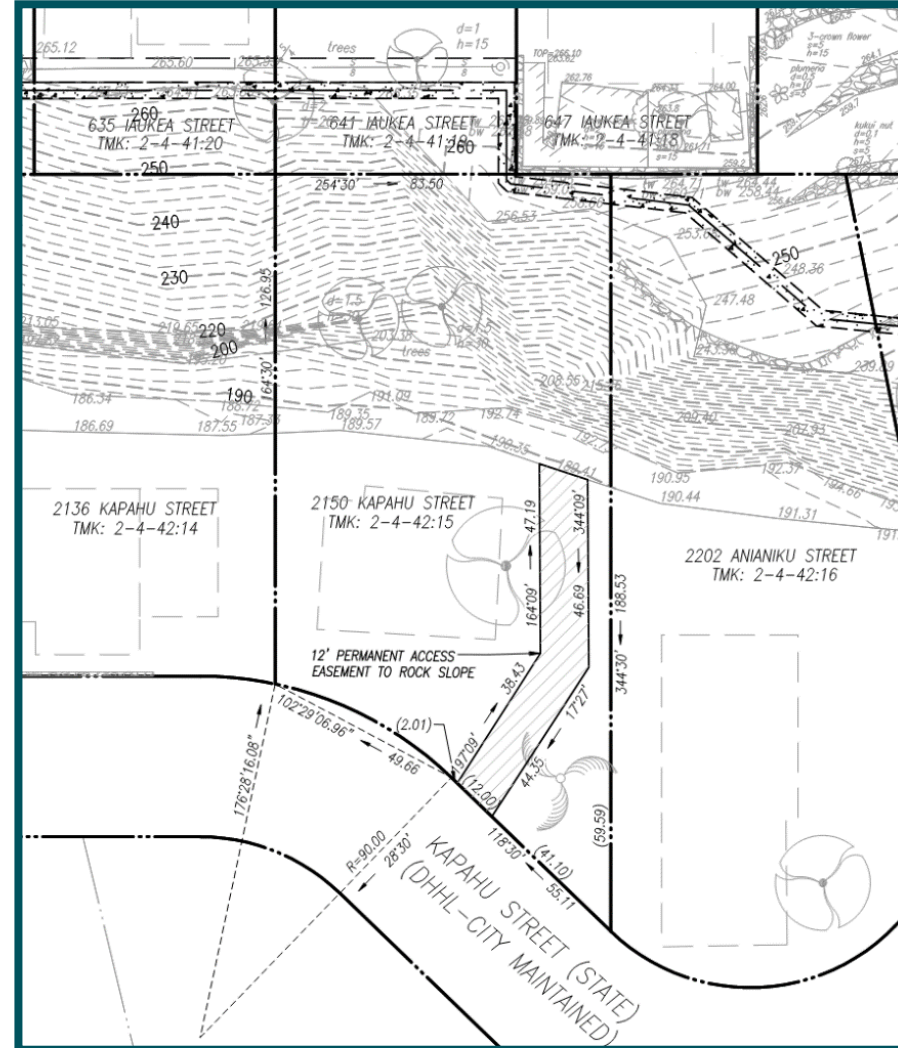
# 2136 Kapahu Street







# 2136 Kapahu Street







# 2136 Kapahu Street







# 2312 & 2316 Kapahu Street (Kema/ Nagasako)



- **Structure repairs**
- **Design to be completed mid 2021**
- **Funds Required: EST. \$500,000**





# 2312 & 2316 Kapahu Street (Kema/ Nagasako)







# 2312 & 2316 Kapahu Street (Kema/ Nagasako)





# 440 & 444 Kauhane Street (Rowland/ Contreras)



- Slope stabilization
- Design to be completed mid 2021
- Funds Required: EST. \$250,000





# 440 & 444 Kauhane Street (Rowland/ Contreras)







# 440 & 444 Kauhane Street (Rowland/ Contreras)







HAWAIIAN HOME LANDS

HAWAIIAN HOMES COMMISSION • DEPARTMENT OF HAWAIIAN HOME LANDS

# **Papakolea Subdivision Phase 2 Sewer Improvements**

July 2021





# Proposed Improvements

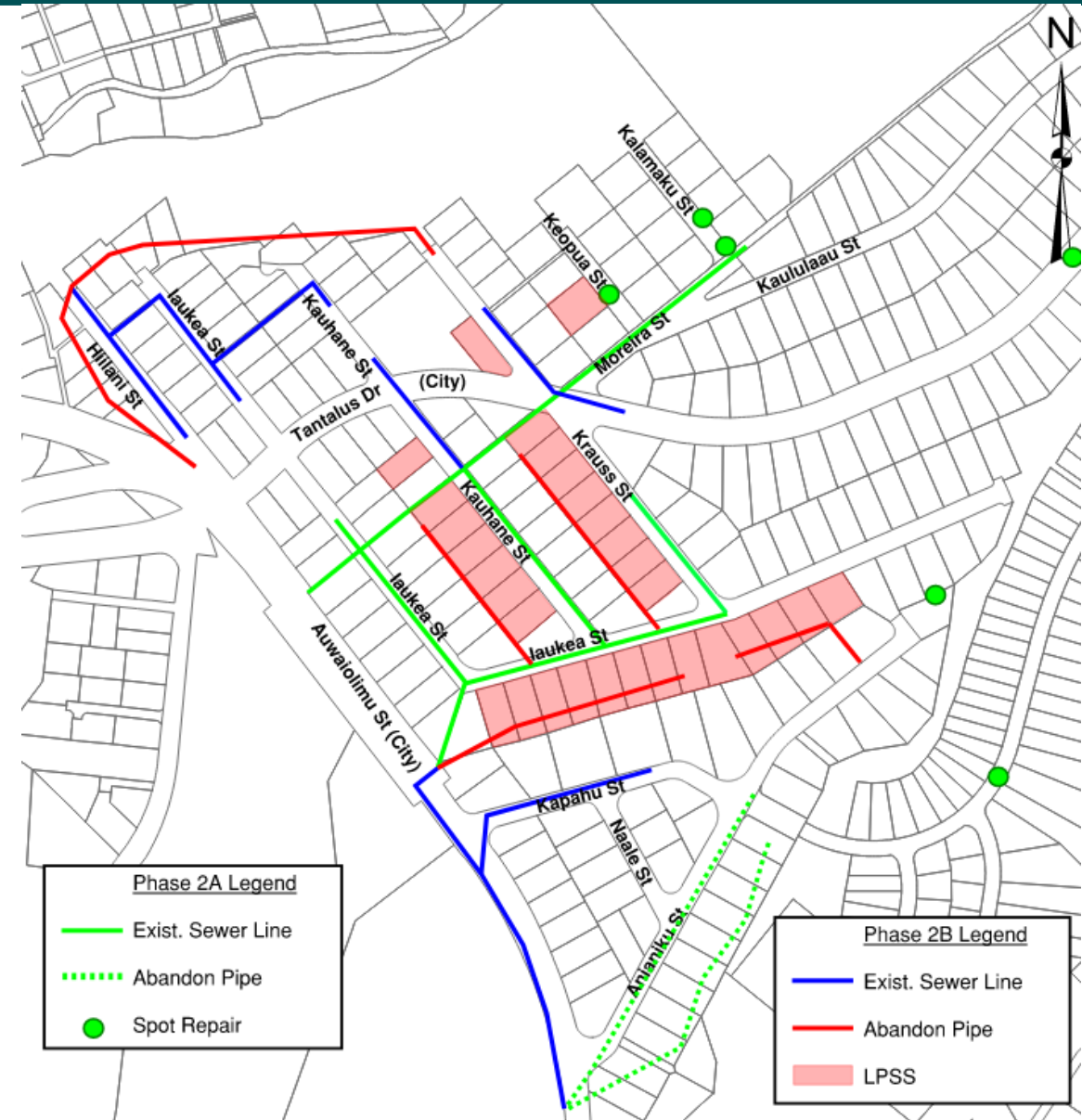
## **Objectives:**

- Continue progress from Phase 1 sewer improvements projects
- Replace aging sewer system (50+ years old)
- Reduce sewer back ups and spills



# Phase 2

- Phase 2A
  - Submitted Plans for City Review (May 2021)
- Phase 2B
  - Install remaining gravity sewer lines, sewer force mains, and low pressure sewer systems (LPSS).
- Sewer lines for both phases will be installed using pipe bursting and open trench construction methods.



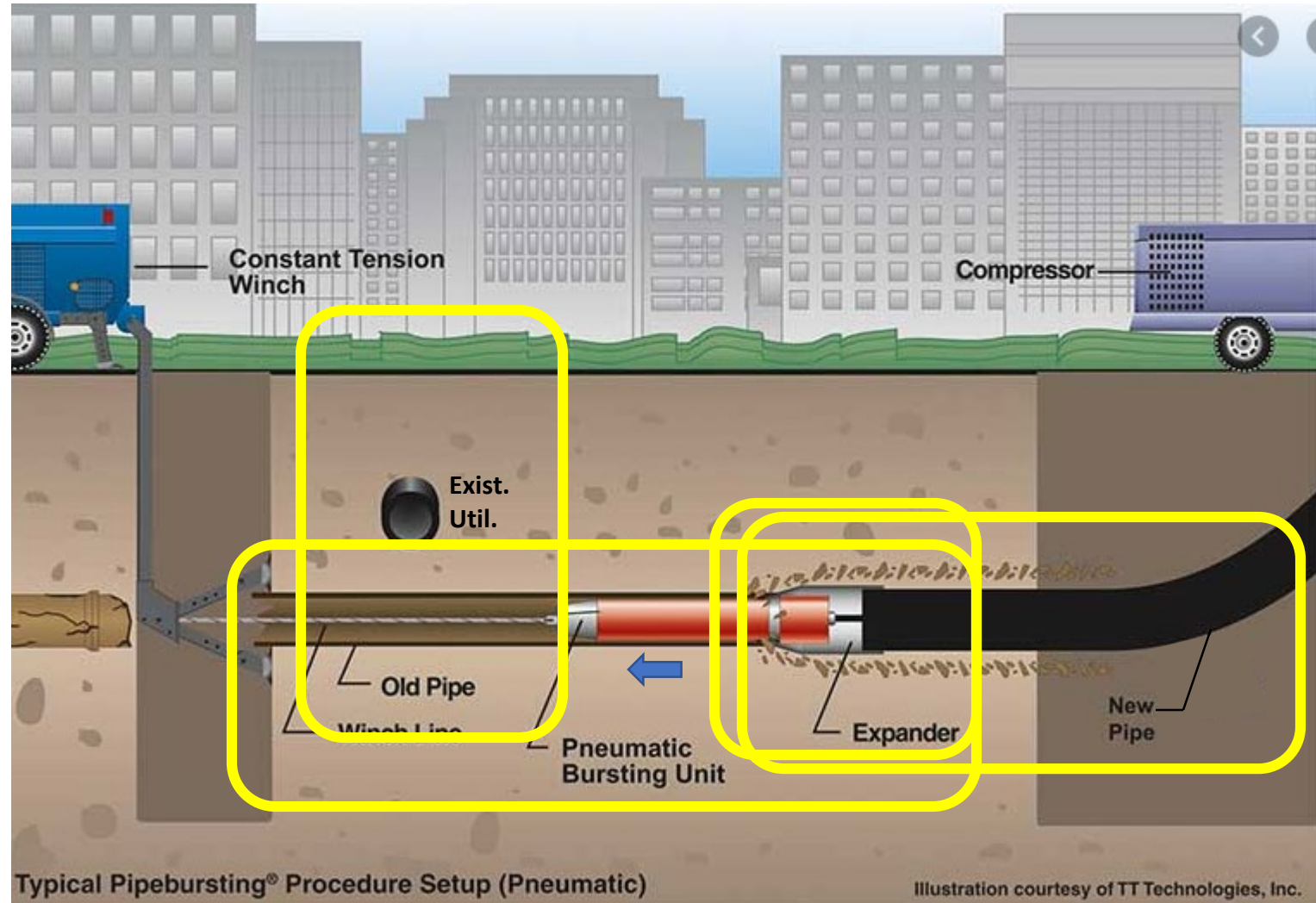




# Pipe Bursting

## Pneumatic Pipe Bursting Process

- A pneumatic hammer cracks and breaks the existing pipe
- Pipe pieces are pushed into the surrounding soil
- New pipe is pulled behind the bursting tool
- Avoids exposing existing utilities
- Minimizes ground disturbance





# Low Pressure Sewer System

## Low Pressure Sewer System (LPSS)

An alternative to a conventional gravity sewer system. Utilizes a collection tank and control panel to pump sewage from the house to the roadway sewer system.

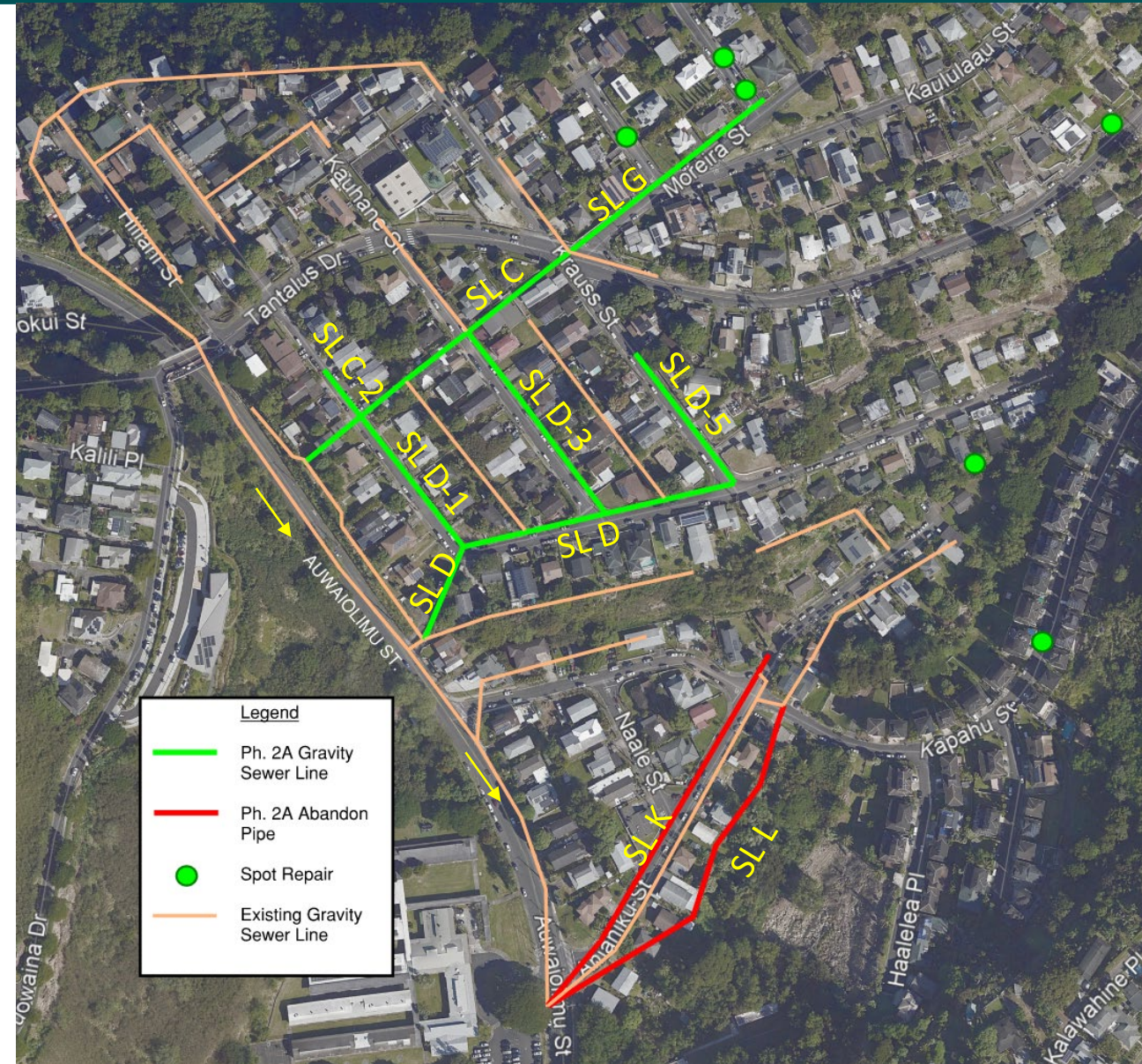






- Phase 2A

- Designed sewer replacement for Sewer Lines C, C-2, D, D-1, D-3, D-5 & G, and spot repairs using pipe bursting and open trench methods
- CLSM fill and abandon 2,000 feet of pipe along SL K, L
- Replace 3,400 feet of gravity sewer lines
- Cost Estimate: \$5.0 Million







# Phase 2A Impacts

## Impacts

- Remove trees and shrubs
- Demolish and reconstruct walls, fences, driveways, and sidewalks.  
Temporarily inaccessible during construction.
- Relocate storage units/area, sheds, structures out of sewer easement.
- Reconnect sewer laterals

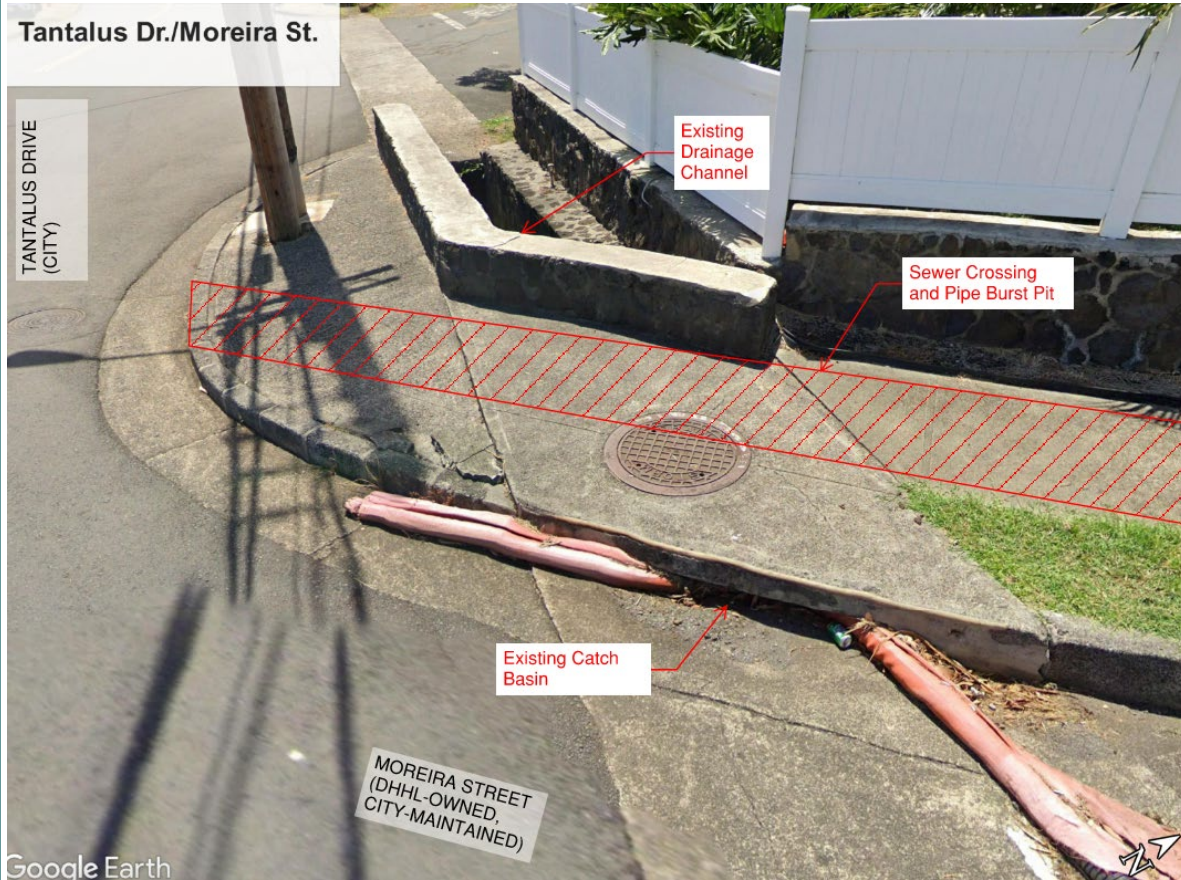


**Photo 1 & 2.** Reconstruct walkway and staircase between Auwaiolimu St. and laukea St.





# Phase 2A Impacts



**Photo 1.** Existing sewer line crosses under the existing historic drainage channel.



**Photo 2.** Exist. Sewer line runs under an exist. mango tree. Tree to be removed.





- Sewer System East of Tantalus Dr.
  - Replace Sewer Lines A, C, C-3, C-4, J
    - 2,120 feet of gravity sewer lines
  - Install 28 LPSS
    - SL D-2, D-4, I, & K-2 are inaccessible due to exist. structures
  - Upsize SL A south of Iaukea to 12-in.
- Sewer System West of Tantalus Dr.
  - Alternative 1
  - Alternative 2





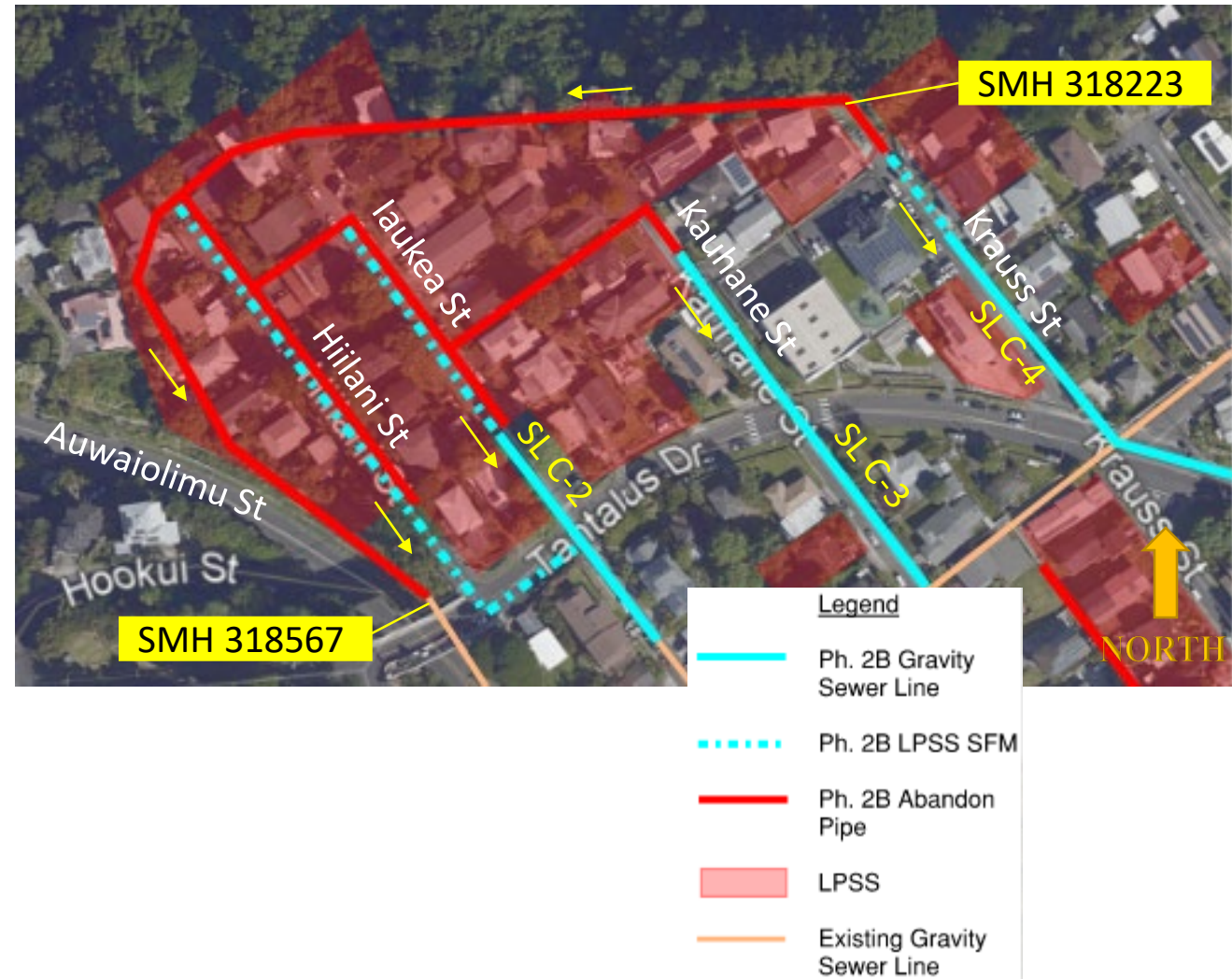


# Phase 2B – Alternate 1

## West of Tantalus

- 38 LPSS
- 700 ft, 8-in gravity pipes
- 1,350 ft, 3-in sewer force mains
- CLSM fill and abandon 2,500 ft SL
  - SL is inaccessible and has safety concerns between SMH 318223-318567 due to exist. structures and steep terrain.

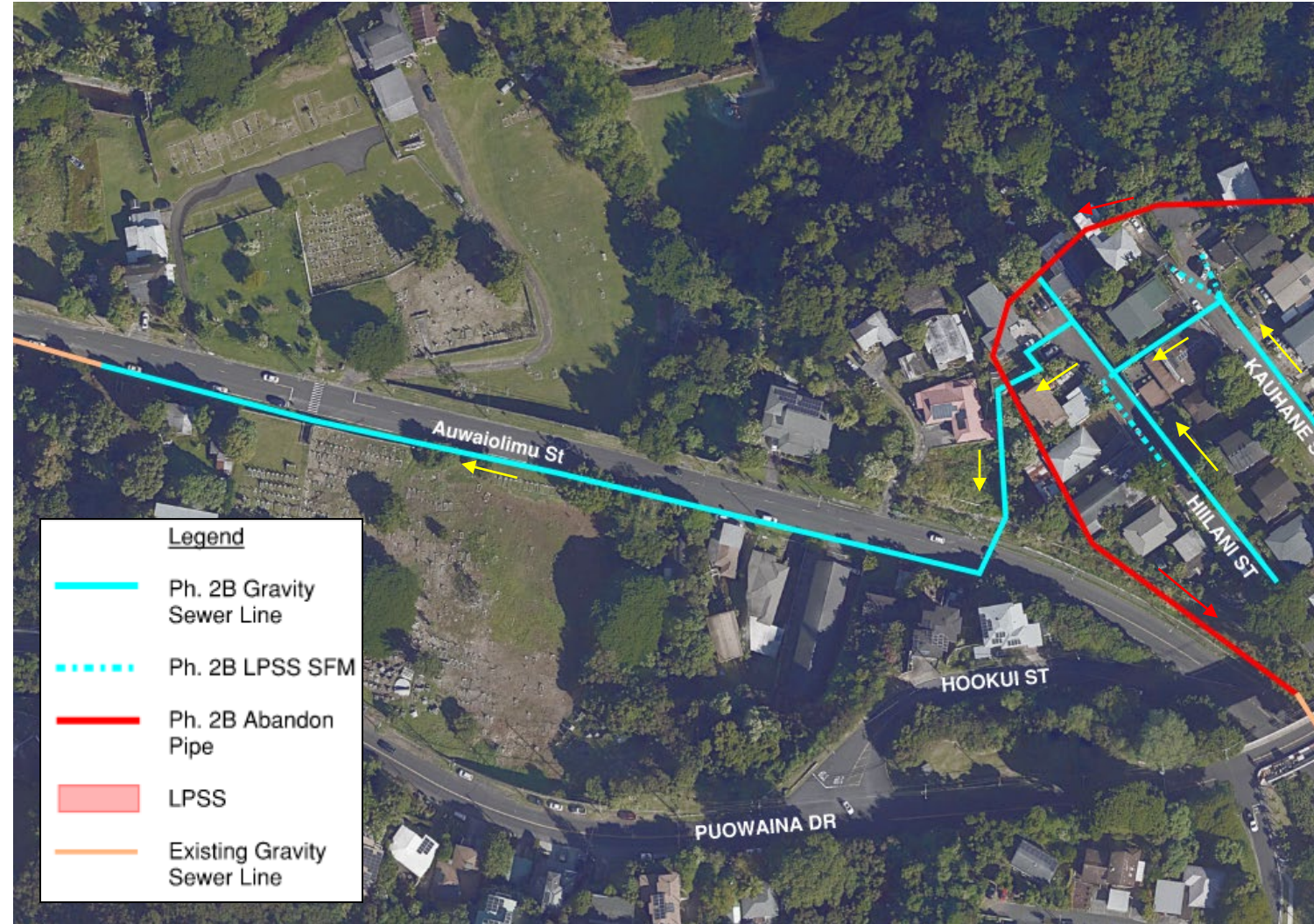
Alt. 1 Estimated Cost: \$7.3 million





# Phase 2B – Alternate 2

- Connect to existing sewer system in Auwaiolimu St.
  - 8-inch 1,040 LF in Auwaiolimu St.





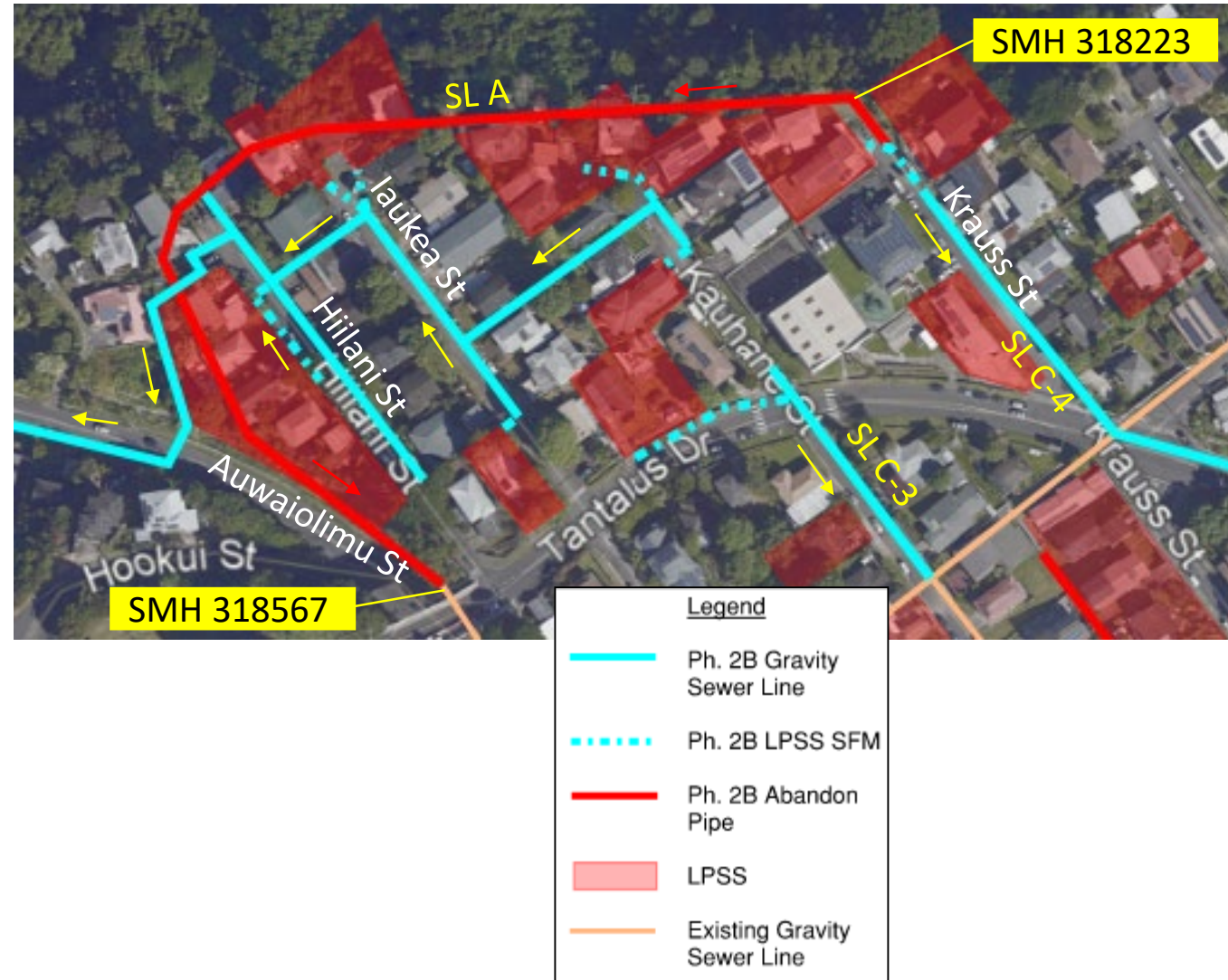


# Phase 2B – Alternate 2

## West of Tantalus

- 21 LPSS
- 1,600 ft, 8-in gravity pipes
- 720 ft, 3-in sewer force mains
- CLSM fill and abandon 1,430 ft SL
  - SL is inaccessible and has safety concerns between SMH 318223-318567 due to exist. structures and steep terrain.

Alt. 2 Estimated Cost: \$10.0 million







# Phase 2B Impacts

## Hiilani Street

- Proposed sewer line runs between residential properties
- Restore existing staircase



Key Map







# Phase 2B Impacts

- LPSS will req. coordination with homeowners
- Crosses the historic Auwaiolimu St. ditch
- Limited space to construct
- Coordinate with future City sewer system upgrades



Key Map







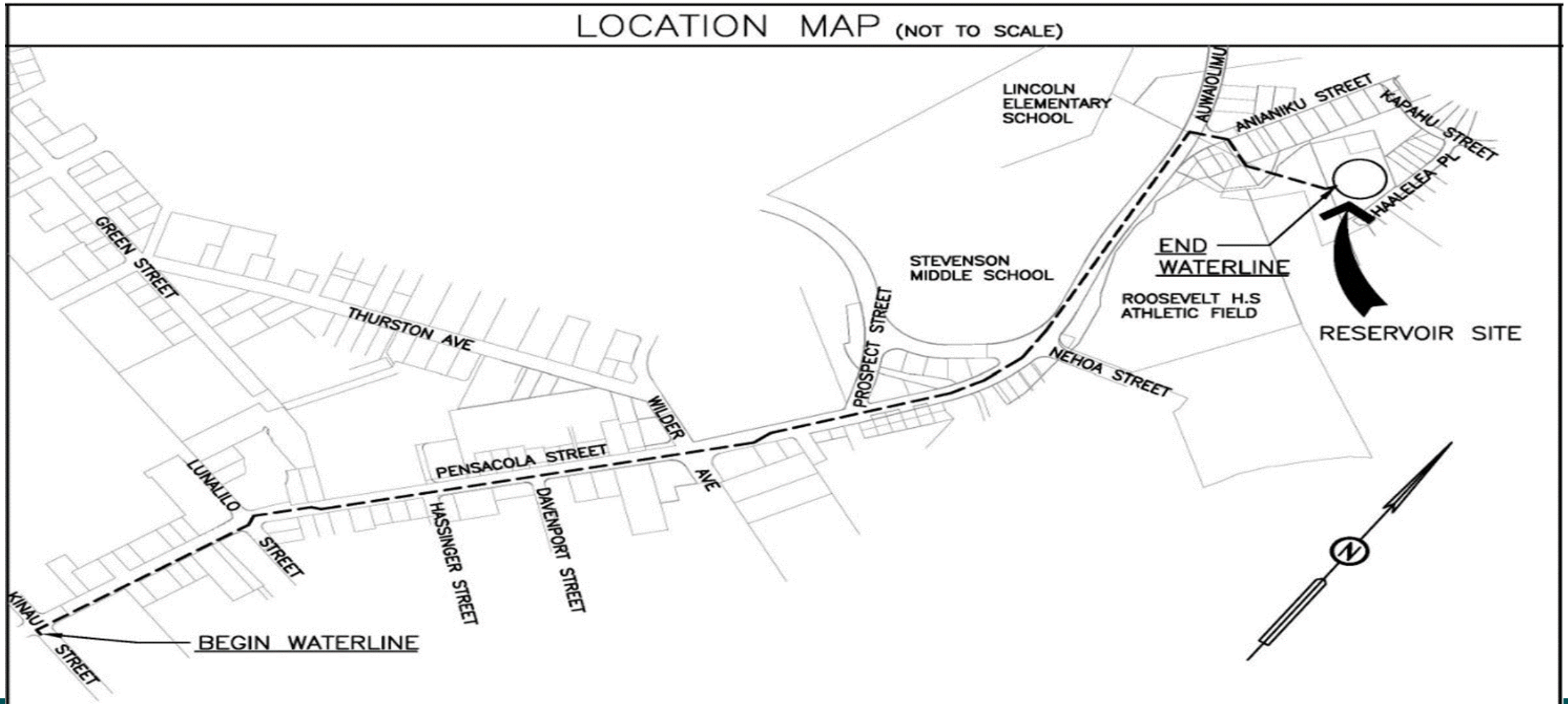
# Kalawahine Reservoir

- Dominic Dias  
July 19, 2021  
Honolulu Board of Water Supply





# Project Location





# Project Purpose and Benefits

- This Reservoir provides 2 Million Gallons of much needed storage in our Metro 180' West water system (We continue to look for additional locations to add storage to this system)
- This additional storage provides the system:
  - Increased operational efficiency
  - Increased reliability for fire protection
  - Resilience during power outages or natural disasters
  - Flexibility for emergency solutions during breaks/outages in the Metro 405' system that serves this area's potable water



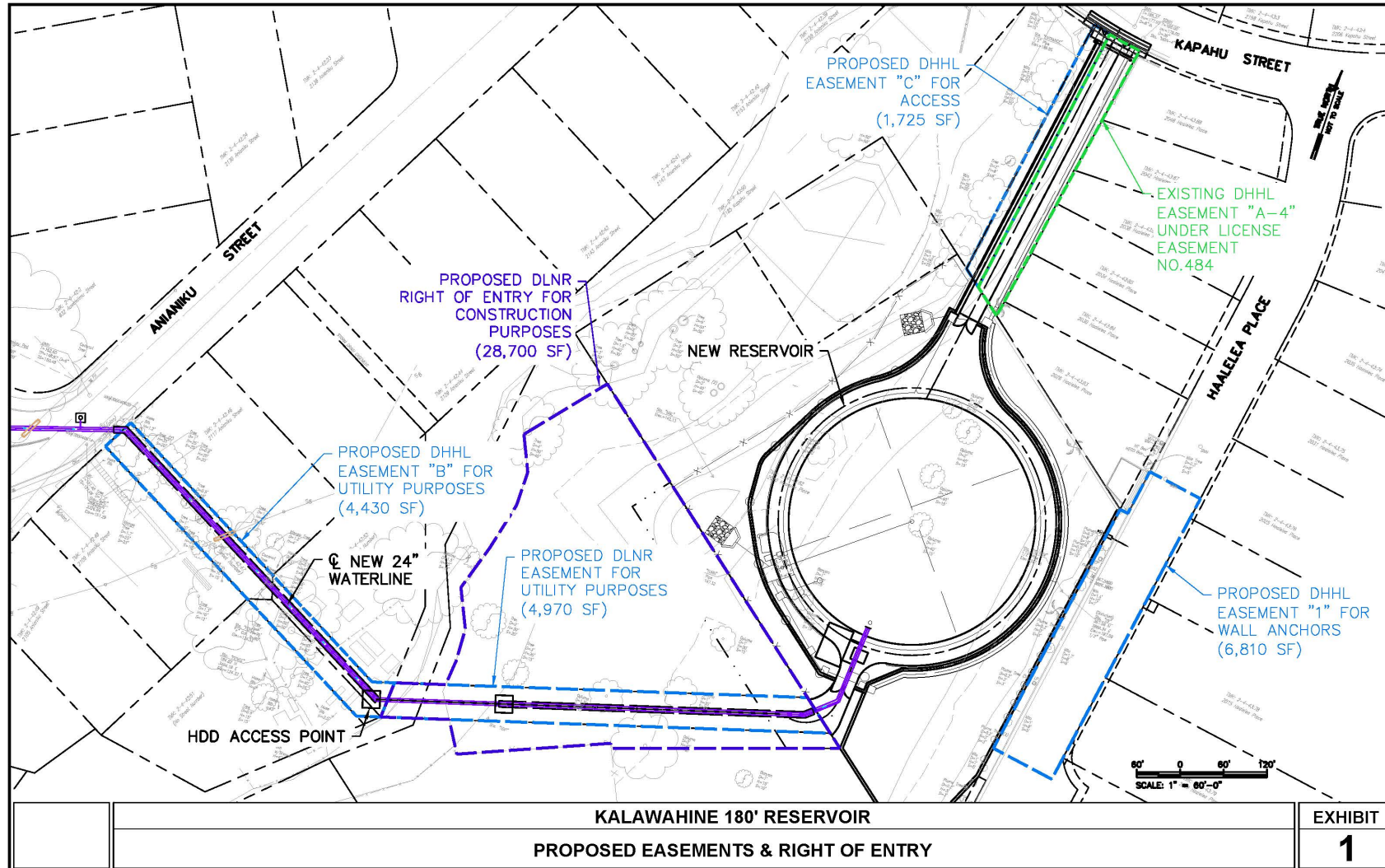


# Project Status

- Both project packages have been bid, and are currently going through the contract execution and award process
- Each project has a construction timeline of around 2 years, but they will be running concurrently
- Notice to proceed could be as early as the ending of this year, but Contractors would still have the ordering of materials, securing of all relevant permits, and mobilization efforts prior to actual start of construction activities
- At the Reservoir Site – Work hours is limited to weekdays from 7:30 am to 3:30 pm, unless authorized by BWS
- Work hours in the street is subject to the City Street Permit
- Noise Permit/Variance from DOH is required



# Project Layout and Renderings







## View from Punchbowl





## View from Kalawahine Place







## View from Kapahu Street

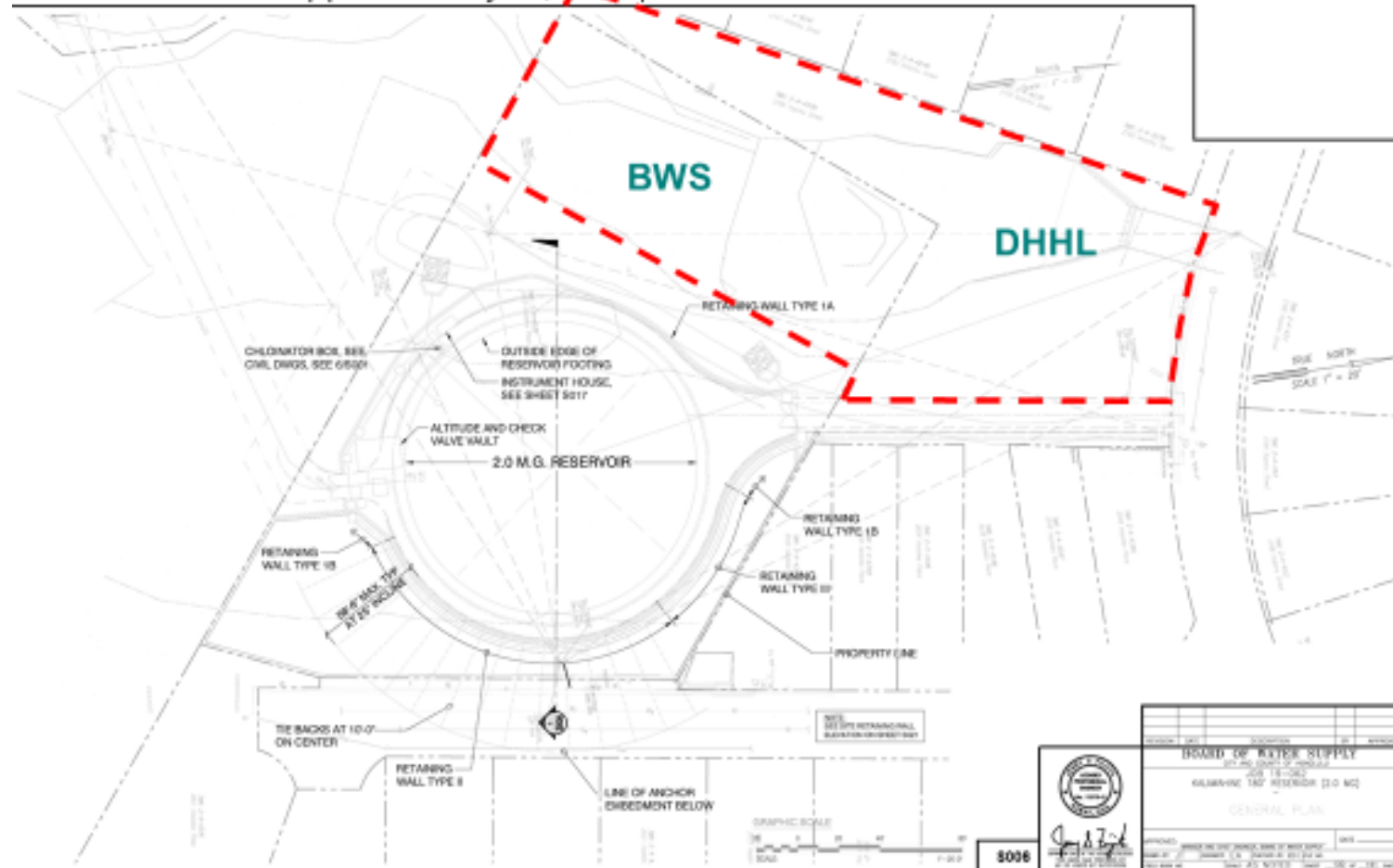




# Future Park Proposal

## Kalawahine Proposed Park Easement Site

Park area can be expanded if BWS provides an easement & grassing for unused area along Kanaha Stream. Approximately 20,000 sq. ft.







Providing safe, dependable, and  
affordable drinking water, now and into  
the future.



# Mahalo!

## BOARD OF WATER SUPPLY

- 

Dominic Dias  
(808) 748-5928,  
[ddias@hbws.org](mailto:ddias@hbws.org)  
July 19, 2021



# Homestead Associations

- Homestead Community Updates





# Mahalo



DEPARTMENT OF HAWAIIAN HOME LANDS

[www.dhhl.hawaii.gov](http://www.dhhl.hawaii.gov)