



HAWAIIAN HOME LANDS

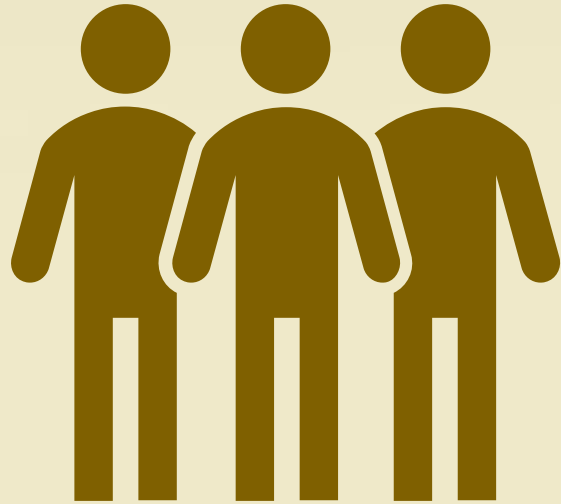
HAWAIIAN HOMES COMMISSION • DEPARTMENT OF HAWAIIAN HOME LANDS

**Beneficiary Consultation Reports  
on two (2) Proposed  
Community Based Renewable Energy  
Solar Project in Kalaoa and Kawaihae  
G-5: Kalaoa  
G-6: Kawaihae**

# Beneficiary Consultation Meetings

## Kawaihae:

- 187 Kawaihae Lessees
- BC Mtg Dec. 8, 2020—11 lessees, 2 HECO
- BC Mtg July 26, 2021



## Kalaoa:

- 975 Lessees and Applicants
- 2 regional plan priority projects
- BC mtg July 13, 2021—introduced selected developer
- 4 lessees

# AGENDA and PURPOSE FOR MEETING


## Part I: Provide Information

1. Why is DHHL Involved in Renewable Energy?
2. How does DHHL get Involved in Renewable Energy?
3. Overview of the process and approvals; opportunities for beneficiary input
4. HECO's "Community Based Renewable Energy" program: what it is, how it works, how can the community benefit?

## Part II: Presentation by Nexamp

## Part III: Discussion

Closing: Next Steps



Why is DHHL Involved in Renewable Energy?  
Why in Kawaihae and Kalaoa? Why now?  
How does it work?

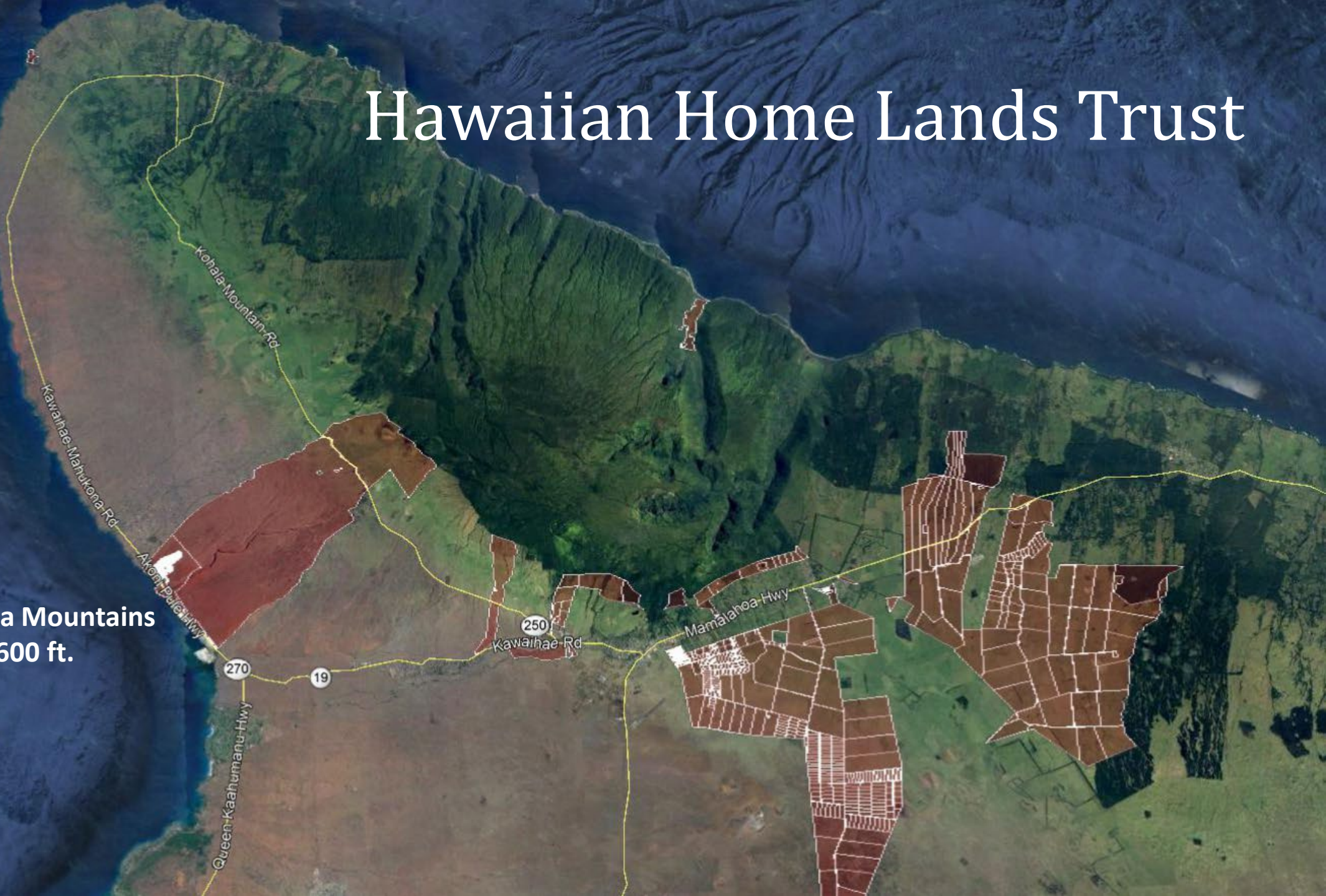
# Why is DHHL Involved in Renewable Energy?

- **2009 DHHL's Energy Policy:** to enable native Hawaiians to lead efforts to achieve energy self-sufficiency and sustainability.
- **2015 State law:** requires electric utilities to produce 100% of their electricity from renewable energy sources by the year 2045. This created the need and demand for renewable energy.
- **We have needs--Renewable Energy development on HHLs can generate revenue to develop new homesteads and deliver community benefits to the homestead community**
- **DHHL Trust lands that have excellent renewable energy resources (Solar, Wind, Hydroelectric resources)**

# Hawaiian Home Lands Trust

## Kawaihae:

- 10,150 acres
- Leeward Kohala Mountains
- Sea Level to 4,600 ft.

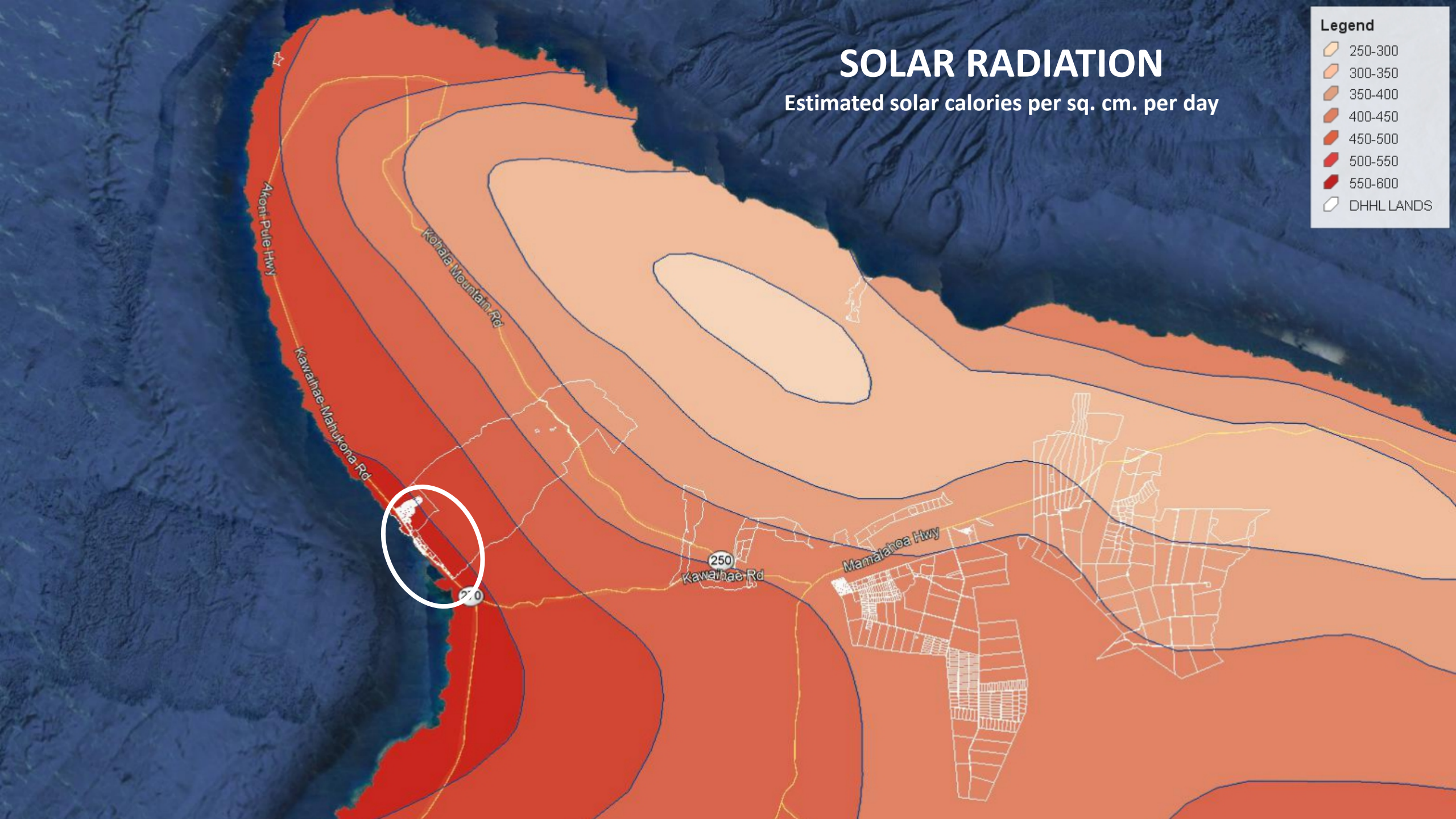


# SOLAR RADIATION

Estimated solar calories per sq. cm. per day

## Legend

- 250-300
- 300-350
- 350-400
- 400-450
- 450-500
- 500-550
- 550-600
- DHHL LANDS



# ISLAND PLAN LAND USE DESIGNATIONS

Legend

Commercial

Community Facility

General Agriculture

Industrial

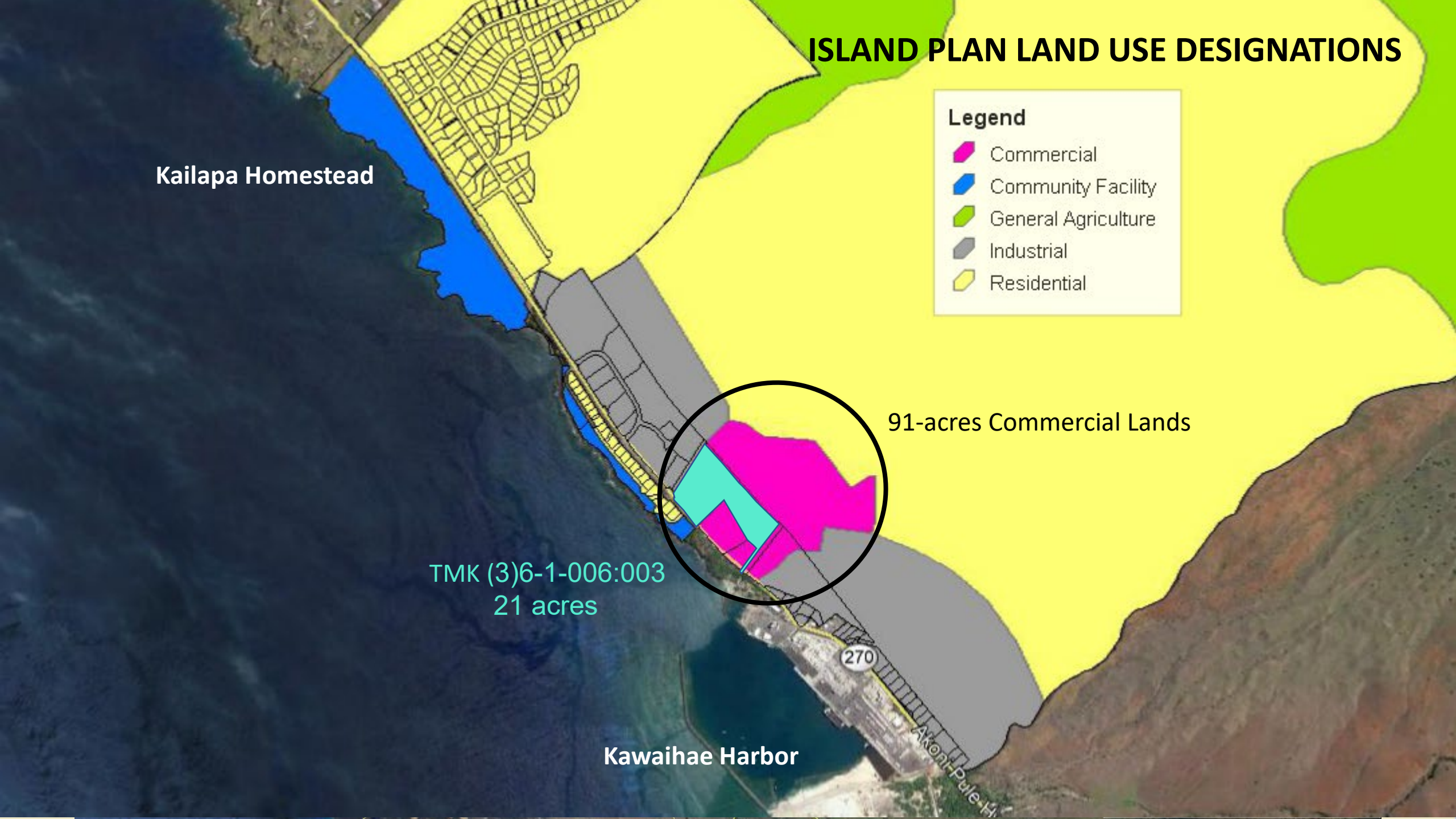
Residential

Kailapa Homestead

91-acres Commercial Lands

TMK (3)6-1-006:003  
21 acres

Kawaihae Harbor



# Project Site

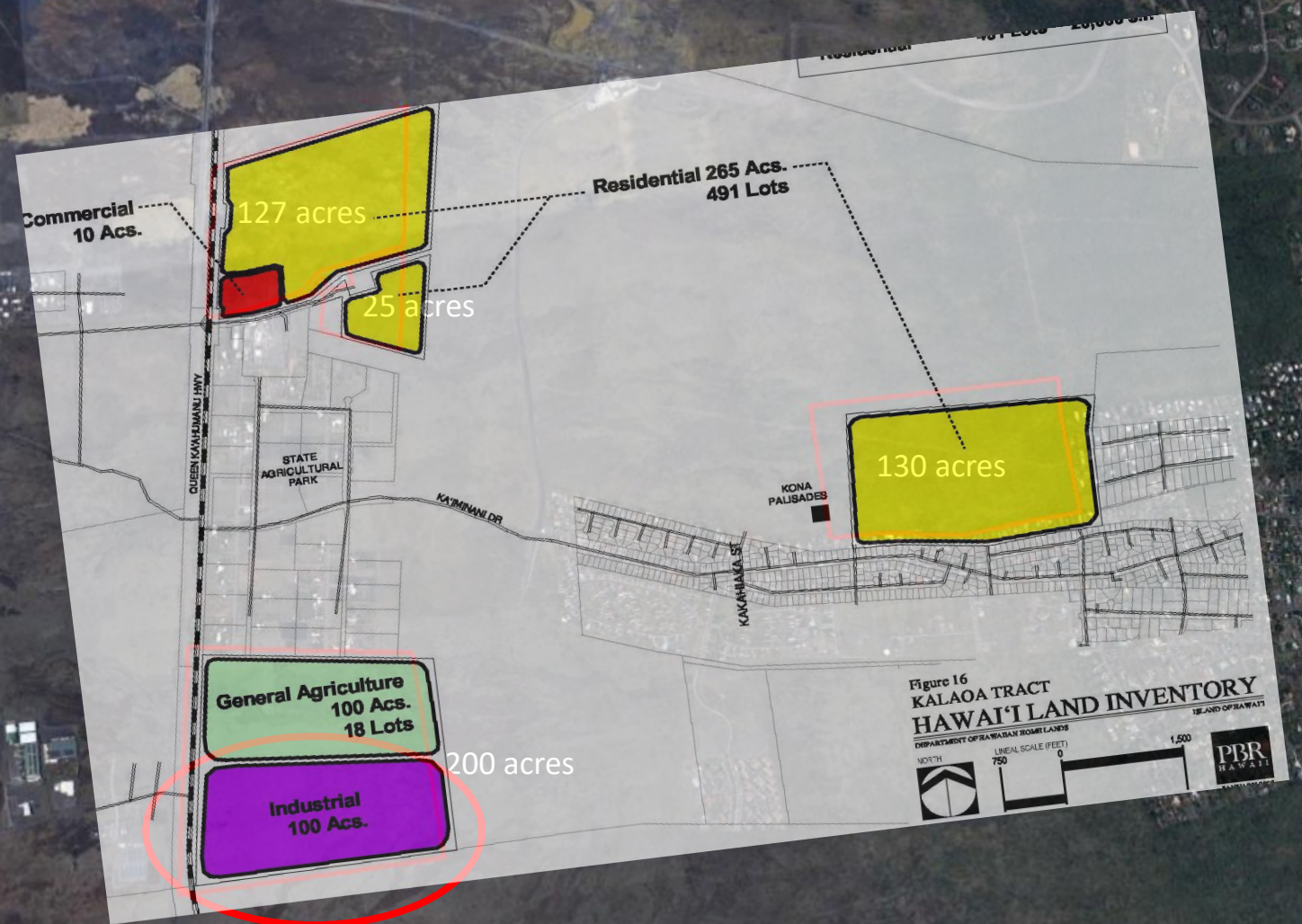
Akoni Pule Hwy

270

Kaewa Pl



# DHHL Kalaoa Lands



# DHHL Kalaoa Industrial Lands

Keāhole Airport

Ka'iminani Dr.

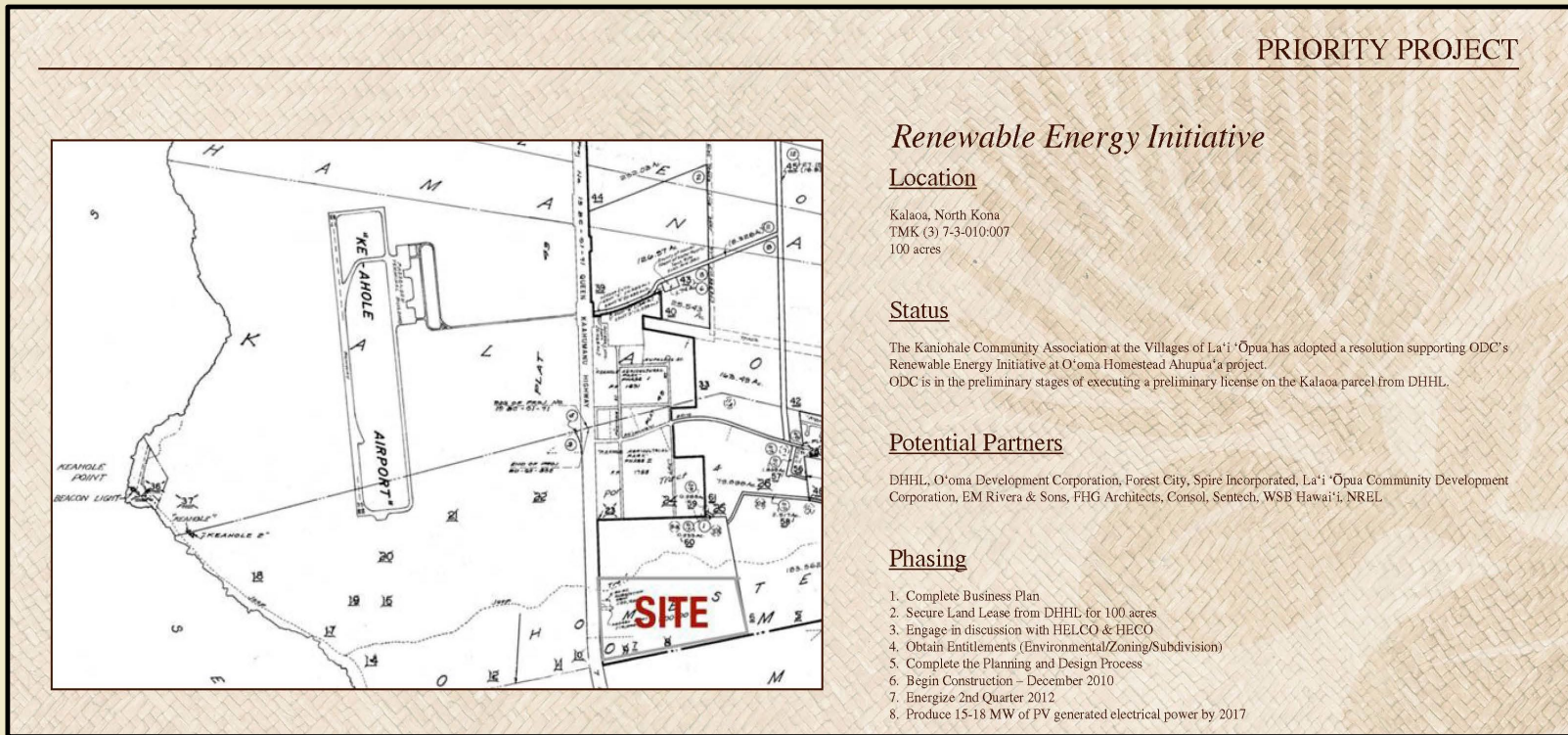
NELHA

**PROJECT AREA**  
**100 acres**



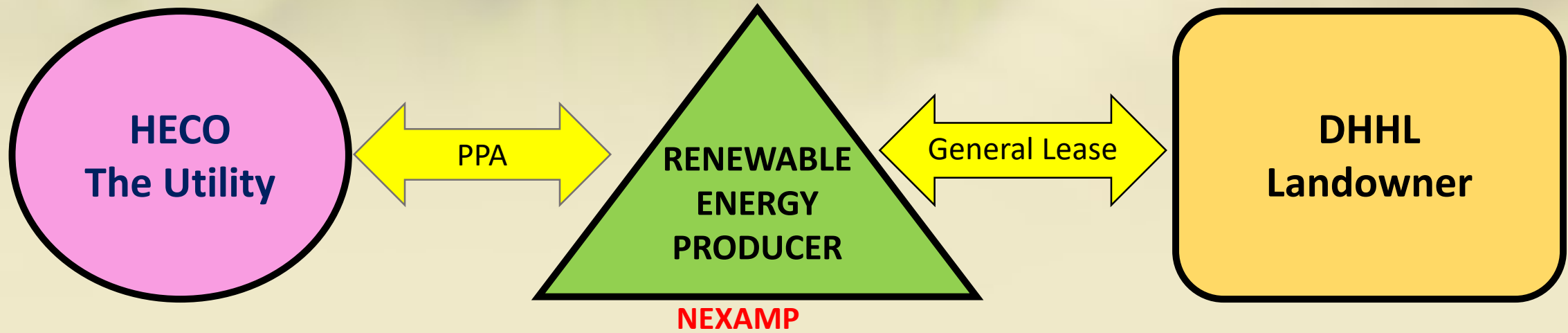
# 2009 and 2020 Regional Plan Priority Projects

## Renewable Energy Initiative



- To increase energy self-sufficiency within the region.
- To provide benefits to the community.
  - a. Benefits from the project that goes to the community
  - b. Training and professional development to provide job opportunities for beneficiaries.

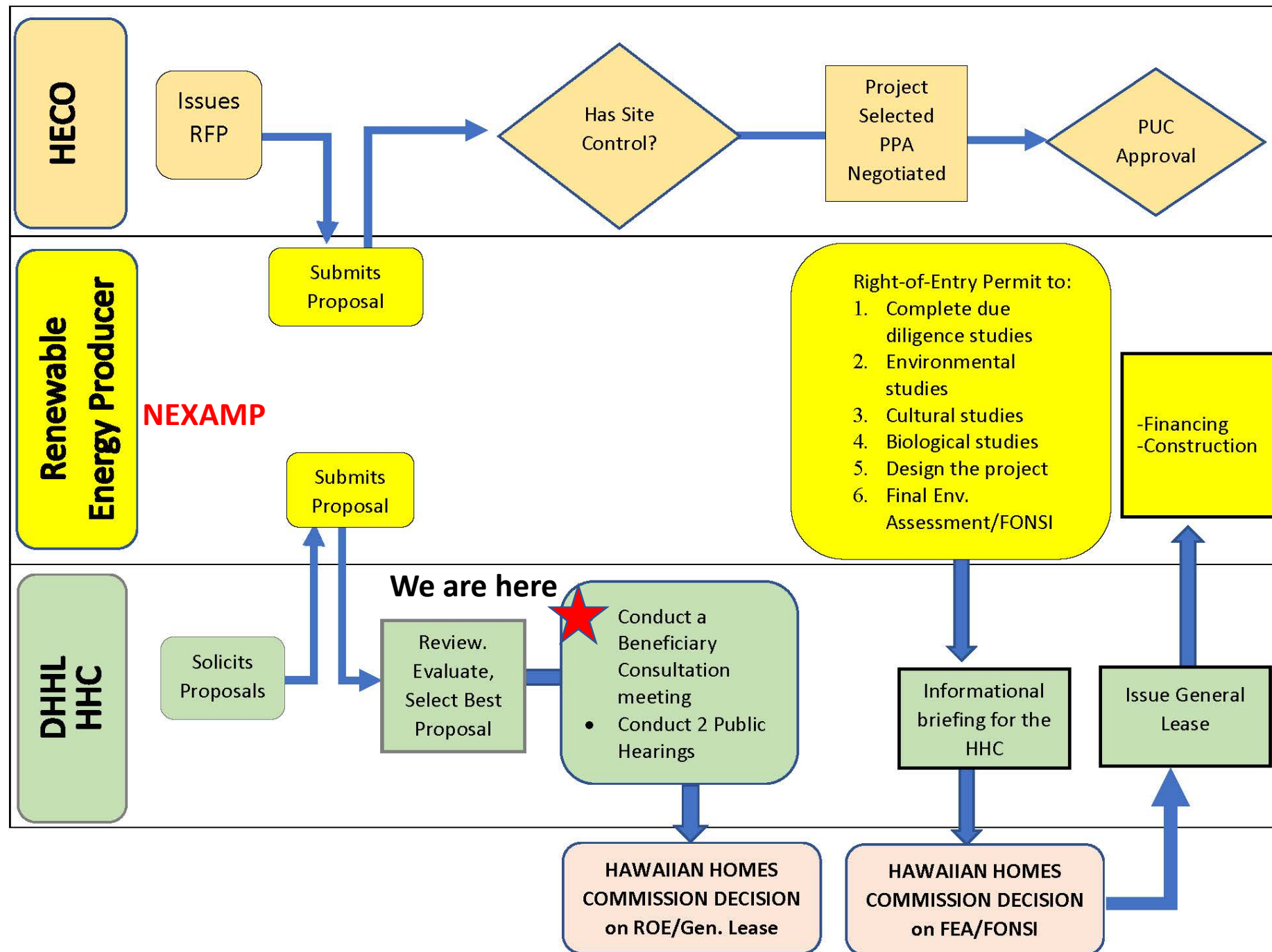
# How Does DHHL Get Involved in Renewable Energy Development?



- Needs to be 100% renewable by 2045
- They buy energy from RE producers
- Process starts with a Request for Proposals
- Competitive Process
- Power Purchase Agreement (PPA)

- Have the technology
- Needs land with the renewable energy resource [DHHL]
- Needs the utility to buy the power they produce [HECO]

- **Land/Renewable energy resource:**
  - General Lease revenue
- **Beneficiaries:**
  - Minimize adverse impacts
  - Maximize community benefits
    - Regional Plan Projects
    - Workforce Training
    - Lower electricity bills



The background of the slide is a blurred photograph of green plants, likely ferns, with a light green and yellowish tint. A horizontal band of slightly darker green is positioned behind the title text.

# HECO'S Community Based Renewable Energy Initiative





## Part II: Presentation by Nexamp Solar, LLC Kawaihae Community Solar Introduction



Speaker: **Julie Beauchemin**,  
Nexamp Director of Business Development, Hawai'i

# Agenda

01 Company Introduction

02 Hawai'i Renewable Energy Progress

03 CBRE 2 Program Summary

04 Proposed Solar Layout

05 Community Benefits

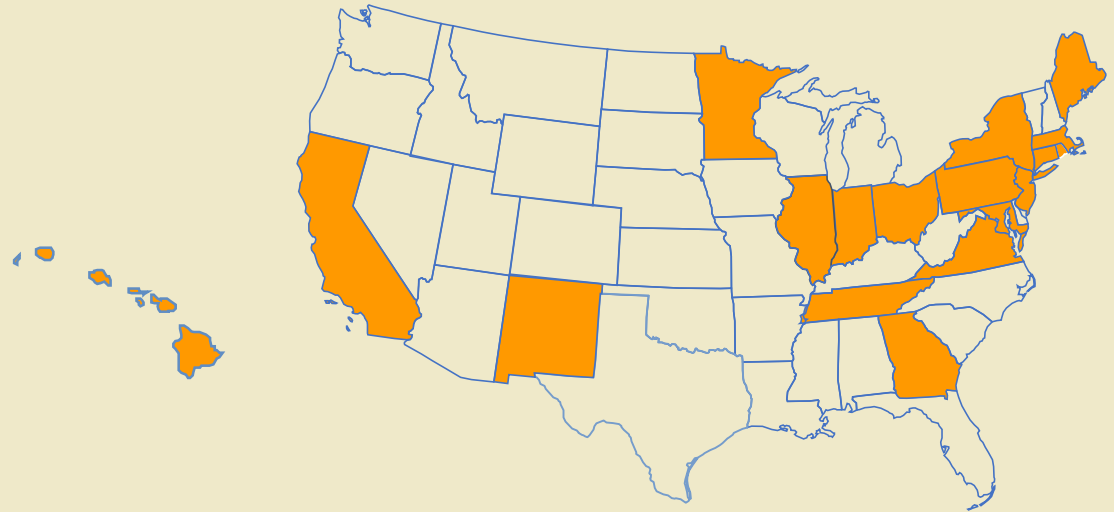
06 Nexamp's Community Solar Subscription

07 Outreach Capabilities

08 Comments, Q & A

# About Nexamp

- Founded in 2007 (**14 years experience** in solar) by two high school friends
- Actively managing or developing solar projects in **18 territories** (12 are Community Solar markets)
- Over 200 projects built totaling **370+ Megawatts**
- Long-term owner and operator
  - › Landowner has 1 contact throughout project life
- Strong financial partner, Diamond Generating Corporation, a Mitsubishi subsidiary





## Current Status of Hawai'i Renewable Energy

- 1 in 3 homes in Hawai'i have rooftop solar
- State goal of **100%** renewable energy utilization by **2045**
- Hawaiian Electric achieved **34.5%** renewables across its territory by end of 2020
  - Waste-to-energy, biomass, geothermal, hydro, wind, biofuels and solar, utility-scale and customer-sited rooftop systems.

# Community -Based Renewable Energy (CBRE) Phase 2

- HECO program overseen by the Public Utilities Commission
- HECO SelfBuild team and developers bid in projects, HECO selects projects
- Phase 2 objectives:
  - › To address significant renewable demand among customers without rooftop solar
  - › To help compensate for previous renewable energy programs falling short of goals
  - › To give low-to-moderate income customers access to renewable energy
  - › To speed up market development and customer access to CBRE benefits
  - › To address near-term capacity needs because of fossil fuel station retirements

# Community -Based Renewable Energy (CBRE) Phase 2

Kawaihae and Kalaoa Projects would be a Low-to-Moderate Income (LMI) Project

- Based on Low (80% AMI) Income Limits by U.S. Dept of House & Urban Dev (HUD)\*

FY 2021 Income Limit Category	Persons in Family							
	1	2	3	4	5	6	7	8
Low (80%) Income Limits (\$)	47,950	54,800	61,650	<b>68,500</b>	74,000	79,500	84,950	90,450
Explanation								

- Per program rule, at least 60% of energy generated must go to LMI homes
- Kawaihae 3.9-Megawatt system can host ~500 homes (~130 homes per Megawatt)
- Kalaoa 8.4-Megawatt system can host ~1,100 homes (~130 homes per Megawatt)
  - If not enough beneficiary homes sign up, rest of power can go to a nonprofit or other association that serves homesteads

# Proposed Layout: Kawaihāe



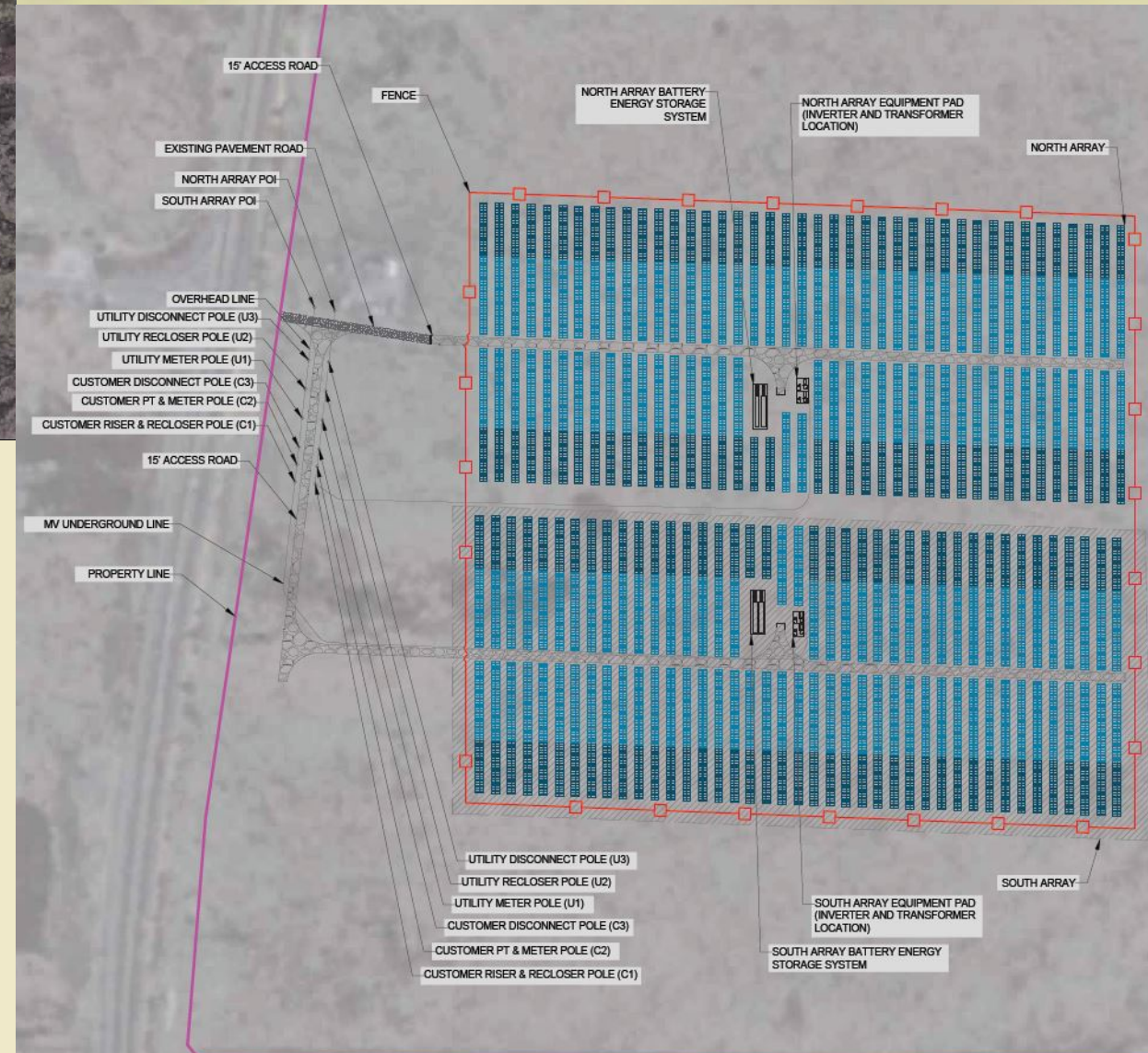
- Mauka of Akoni Pule Hwy
- 3.9 Megawatts + battery storage
- 14.9 acres fenced
- Tracker system & bi-facial panels



# Proposed Layout: Kala o a



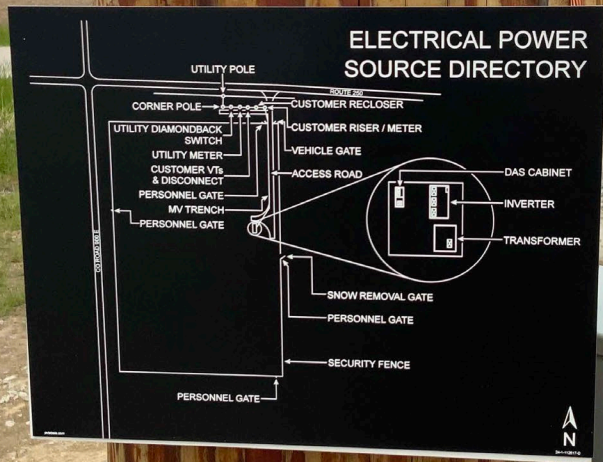
- Behind existing substation
- 8.4 Megawatts + battery storage
- 27.6 acres fenced
- Tracker system & bi-facial panels







**CAUTION:**  
MULTIPLE SOURCES  
OF POWER  
LOCKABLE AC GENERATION  
SOURCE DISCONNECT



UTILITY SERVICE DISCONNECT  
FOR PV SYSTEM  
PV INVERTER AC DISCONNECTS  
LOCATED AT INVERTER NEXT TO  
TRANSFORMER



Battery



10/1/20, 1:54 PM

Monitoring System & Inverter



10/1/20, 8:34 AM



Source: Oahu Grazers



***Compatible ground-mounted solar dual uses:***

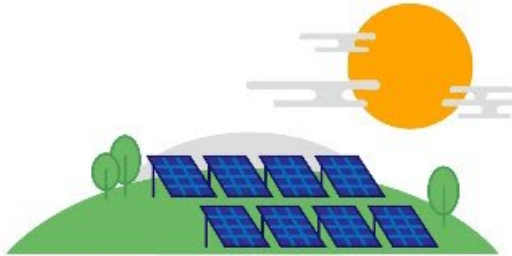
- Sheep farm
- Pollinator habitat
- Certified wildlife habitat
- Hand-picked crops not needing direct light
- Other uses?

# Community Benefits

- ✓ **Discounted electricity to beneficiaries for 20+ years**
  - Savings depends on final CBRE 2 rules; likely 10-15% monthly discount
  - Priority to DHHL beneficiaries
- ✓ **Upgraded electrical infrastructure** in community
- ✓ **Local workforce opportunities**
  - Workforce training program for trade jobs in Construction and Maintenance
- ✓ **Donations** to nonprofit organizations that serve the homesteads
- ✓ **Local food production or other agriculture** suggested by beneficiaries
- ✓ **Low -impact use that conserves land** for future agriculture/other uses

# community solar with nexamp

subscribe to a local  
Nexamp solar farm



add clean, solar energy  
to your utility grid



receive credits from your  
utility and save on your  
annual electricity cost



The Nexamp Community Solar contract has:

- ✓ **Guaranteed discount**
- ✓ **No upfront costs**
- ✓ **No cancellation fees**
- ✓ **No long -term commitment;     can cancel with 90 days' notice**
- ✓ **No credit check or FICO score requirement**

# Utility Portal: communityenergyhawaii.com



COMMUNITY-BASED  
RENEWABLE ENERGY

Hawaiian  
Electric

[HOME](#) | [VIEW PROJECTS](#) | [GET STARTED](#)

## Welcome

Please sign into your account.

Username

Password

[LOG IN](#)

[Forgot Username?](#) [Forgot Password?](#)

## New Customer?

Get started by [creating an account](#)

# Local Outreach

Nexamp is committed to the following outreach activities to ensure project success:

- **Information sessions** with Nexamp representatives in a public space
  - For project updates and community solar information
- **Direct mail** to beneficiaries, paid for by Nexamp
- **Printed ads** in local publications, paid for by Nexamp
- **Promoted posts** on Facebook, paid for by Nexamp
- **Flyers** with program information, provided by Nexamp



# Outreach Materials

## Direct Mail



Dear <Name>,

We're excited to let you know that Nexamp's community solar farms located in the Town of Rochester are currently being constructed and we anticipate they will be going live soon. We'd like to thank the town for their support as we work to bring clean, renewable energy to the local community.

As a reminder, the solar farms are located off Route 209 near Samsonville Road and off Airport Road and will serve approximately 1,100 homes.

Nexamp's farms are part of New York's community solar program, which allows residents to subscribe to a share of a local solar farm and go solar without rooftop panels. Subscribers receive credits on their electrical utility bill for the energy produced by their solar farm share.

Participants in the farm will receive a 10% discount on the credits they receive, helping them reduce their electric bills by up to 10% annually. With Nexamp, there's no upfront cost or long-term commitment – you can cancel your share with no penalties. Signing up for this program will not affect your relationship with your utility, Central Hudson Gas & Electric.

While the farms are almost full, we're reserving an additional 100 spots for residents of the Town of Rochester who enroll by July 10<sup>th</sup>.

To learn more or start the subscription process, please visit [www.rochestersolar.info](http://www.rochestersolar.info) or call Nexamp at 800-945-5124.

Nexamp will also be hosting information sessions in the area for you to learn more about the benefits of community solar. Please bring a recent electricity bill to the meeting so that Nexamp can estimate the size of the solar farm share you will need.

**Tuesday, June 25<sup>th</sup>**  
7:00pm  
New Paltz Community Center  
3 Veterans Drive  
New Paltz, NY 12561

**Wednesday, June 26<sup>th</sup>**  
7:00pm  
Waverasing Town Hall  
108 Canal Street  
Ellenville, NY 12428

We look forward to seeing you there.

Zaid Ashai  
President & CEO, Nexamp

Mike Baden  
Town of Rochester Supervisor

Printing and postage costs for this letter were paid for by Nexamp, Inc.

## Flyer

community solar with  
**nexamp**

**Go Solar. Save Money.**  
**No Rooftop Panels Required.**

Community Solar programs allow utility customers to tap into solar energy and save on their annual electricity cost without having to install solar panels.



### THE BENEFITS:



**No installation** of any equipment on your roof or property.



**No upfront costs** or long-term contracts.



**Save up to 10%** on your annual electricity cost.



**Support solar power** and demonstrate your commitment to renewable energy.

Visit [www.rochester-solar.com](http://www.rochester-solar.com) to learn more or call 800-945-5124

Nexamp – 101 Summer Street, Boston, MA 02110 – [solarize@nexamp.com](mailto:solarize@nexamp.com)

## Facebook Post

**COMMUNITY SOLAR INFO SESSION**

**JAN 24** Rochester Community Solar Info Session  
Public · Hosted by Nexamp

★ Interested ✓ Going ...

🕒 Thursday, January 24, 2019 at 6:30 PM – 7:30 PM  
about 1 month ago

📍 15 Tobacco Rd, Accord, NY 12404-5026, United States [Show Map](#)

🗣 Hosted by Nexamp [Message Host](#)

About Discussion

✎ Write Post 📷 Add Photo/Video 📺 Live Video 🗳 Create Poll

➔ Write something...

9 Went · 37 Interested  
Share this event with your followers

# Onboarding Kit

- New subscribers receive the kit shortly before credits appear on their utility bills
- Contains a community solar handbook, reusable bag and window decal
- The handbook will be a resource for questions about credits and billing



# Most Recent CBRE Phase 2 Schedule

Milestone	Schedule Dates
(1) Draft RFP filed	July 9, 2020
(2) Technical Conference	July 29, 2020
(3) Parties and Participants file Comments by	August 12, 2020
(4) Proposed Final RFP filed	September 8, 2020
(5) Updated RFP Draft filed per Order 37592	March 30, 2021
(6) Parties and Participants file Comments by	April 14, 2021
(7) Proposed Updated RFP filed	May 14, 2021 <sup>10</sup>
(8) Final RFP issued	June 14, 2021 <sup>11</sup>
(9) IPP and Affiliate Proposal due date	August 13, 2021 at 2:00 pm HST
(10) Priority List selected	October 12, 2021
(11) BAFOs due	October 19, 2021
(12) Final Award Group selected	February 1, 2022
(13) Contract Negotiations Start	February 8, 2022

**RFP** = Request For Proposals

**IPP** = Independent Power Producer

**BAFO** = Best And Final Offer

# NEXT STEPS

## 2<sup>nd</sup> Week in October

- Two Public Hearings
- HHC Decision-Making on a Right-of-Entry to conduct due diligence studies and conversion to a General Lease if all requirements met.
- Due Diligence work on-site
- HECO has to release the RFP for CBRE
- Nexamp will respond to RFP—Secure Selection

# More Information, More Questions?

**MORE INFORMATION: on our website at:**

**<https://dhhl.hawaii.gov/po/Hawaii-island/>**

**--Powerpoint, meeting notes, recording of the meeting**

**MAHALO!**

# BENEFICIARY DISCUSSION

- Questions on the Presentation?
  - Questions on the Process?
  - Questions about the Site?
  - Questions about HECO's CBRE Program
- Input on how the Project could benefit your homestead community?
  - What kind of projects would benefit the homestead community.
  - What Regional Plan Priority Projects would you like to see supported by
  - IF there was only one RP PP that could be supported by this RE devmt, what do you think it should it be?