



HAWAIIAN HOME LANDS

HAWAIIAN HOMES COMMISSION • DEPARTMENT OF HAWAIIAN HOME LANDS

Community Information Meeting

East Hawai'i Community Meeting

September 20, 2021



Agenda

- Welcome
- Planning Office Update
- Update on East Hawai'i Water Issues and Projects
- Construction Status Updates
- Homestead Associations
- Q&A



Meeting Kuleana

- 1) Be respectful of the person talking – please do not interrupt the person that is talking;
- 2) Wait for the facilitator to call on you or type your question into the chat box
- 3) When addressing other participants (verbally or in the chat box), be respectful, show aloha, treat others how you would like to be treated;
- 4) Agree to disagree — accept that others may have different perspectives and opinions.
- 5) Have an open mind — take home new ideas or new information.

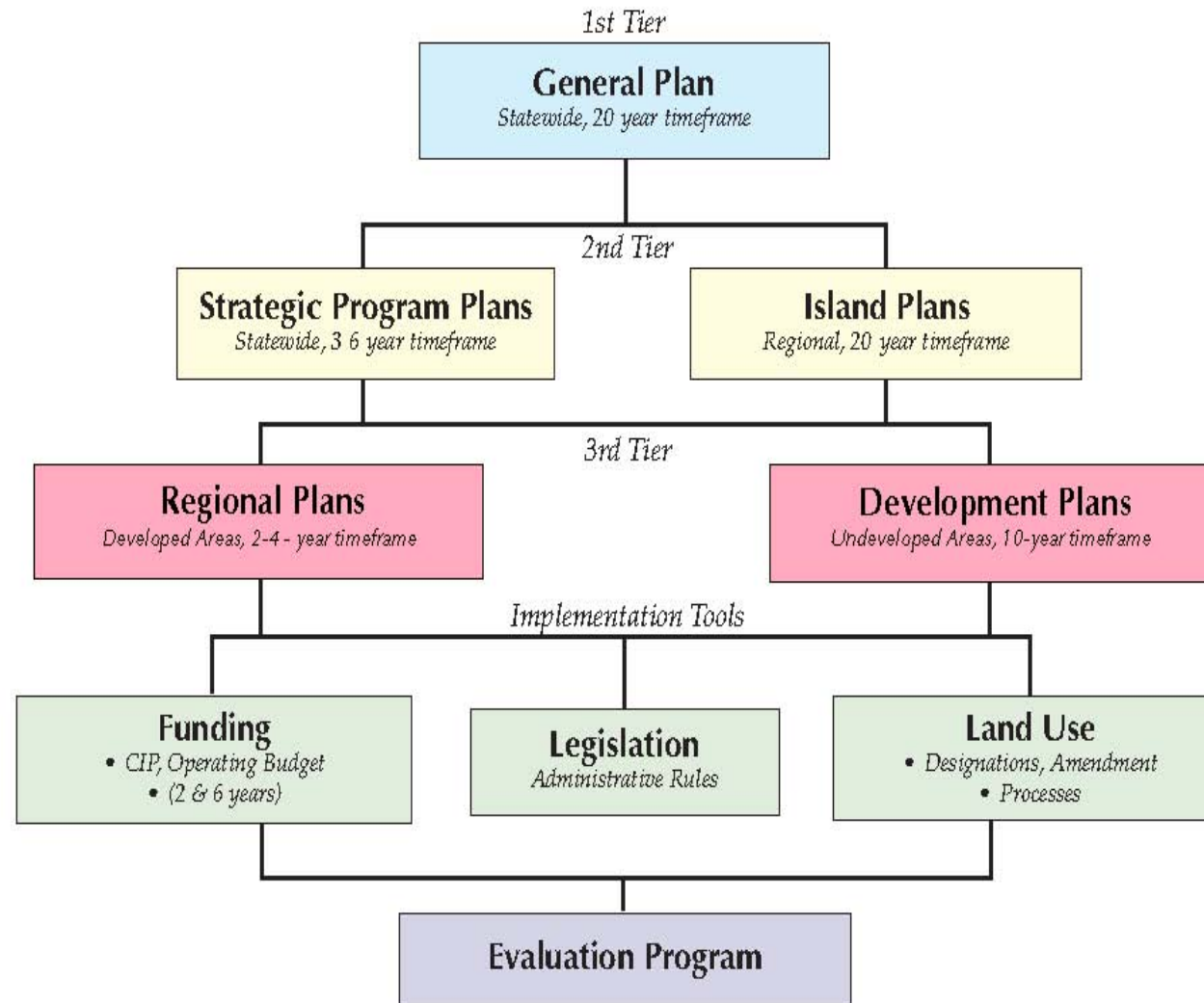


Planning Office

Planning Office Updates



DHHL Planning System

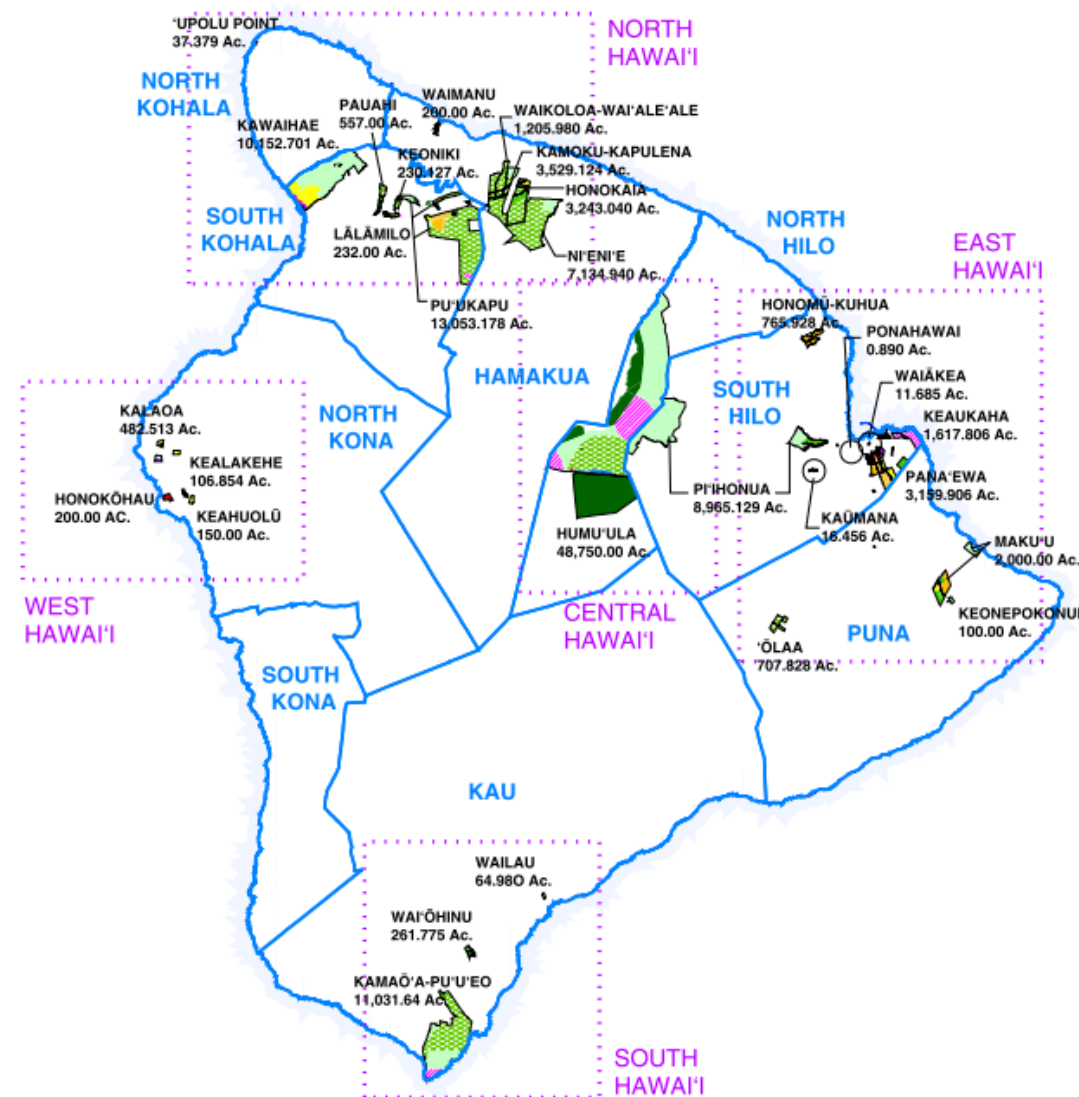
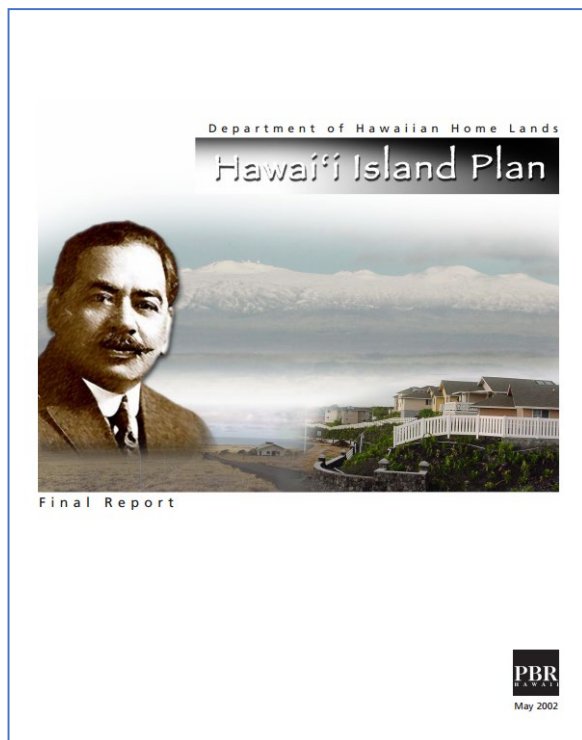


DHHL Planning System



East Hawai'i Plan Implementation Update

Hawai'i Island Plan





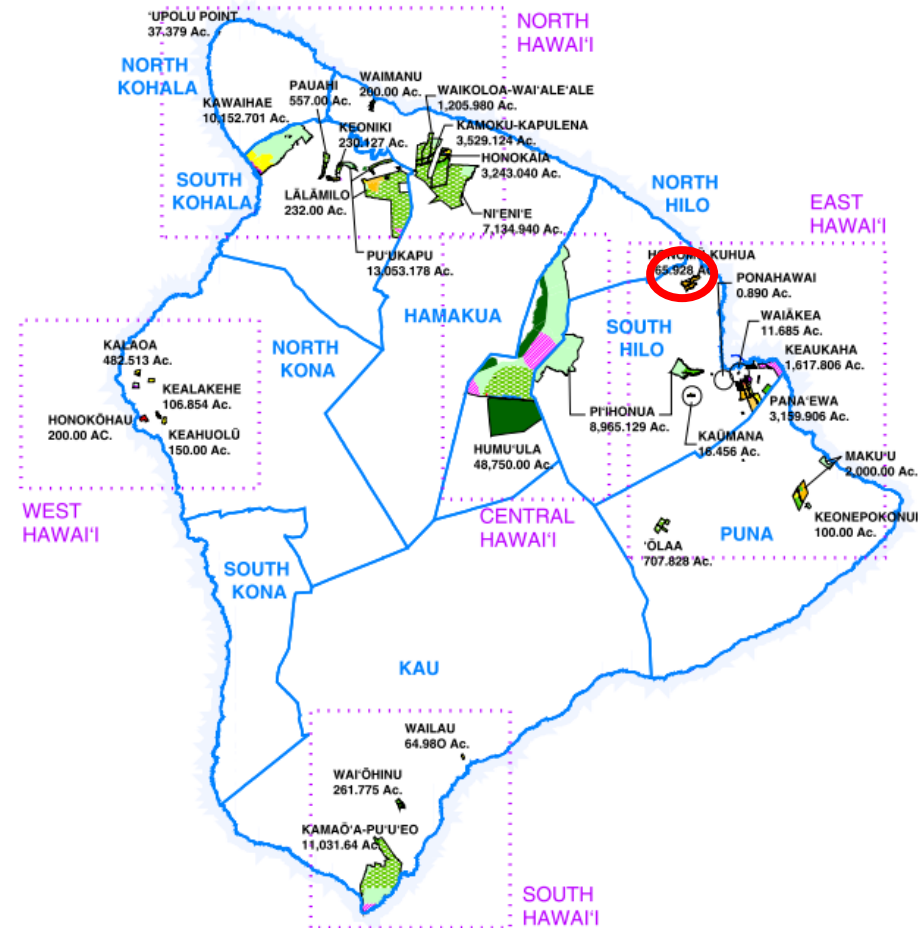
East Hawai`i Plan Implementation Update

Land Use Designation	Acres	Percent of Total
Residential Homestead	1,001	4.5%
Subsistence Agriculture Homestead	1,968	9.1%
Supplemental Agriculture Homestead	3,019	13.8%
Pastoral Homestead	7,832	35.7%
Community Use	90	0.4%
General Agriculture	4,970	22.7%
Commercial	346	1.5%
Industrial	364	1.6%
Conservation	240	1.2%
Special District	2,058	9.5%
TOTAL	21,888	100%



East Hawai`i Plan Implementation Update

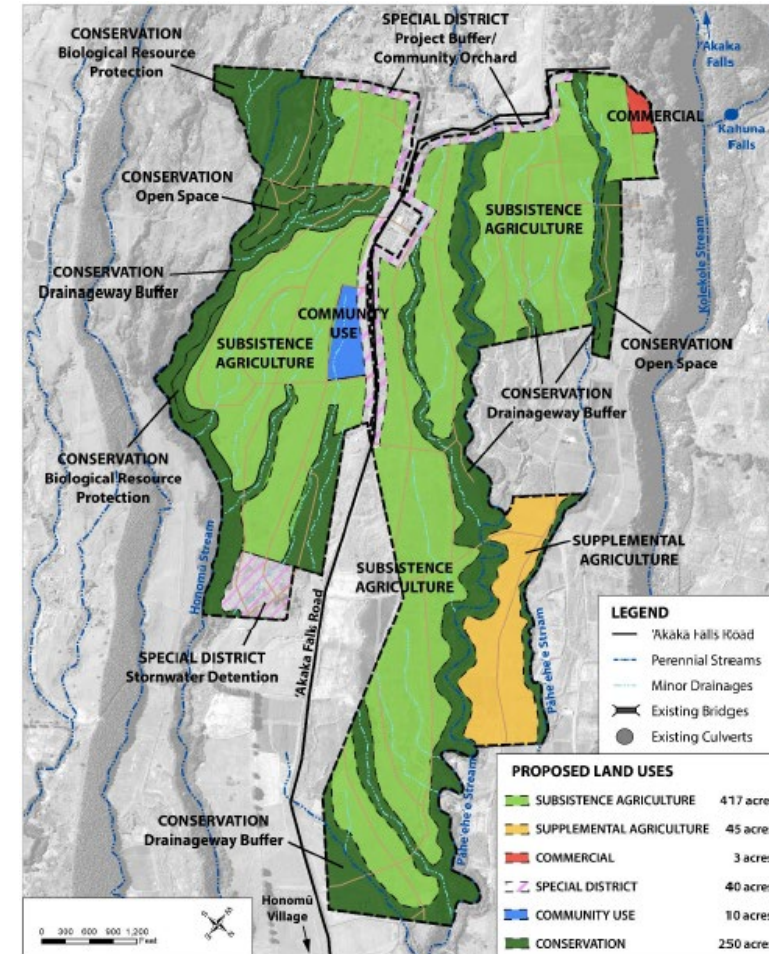
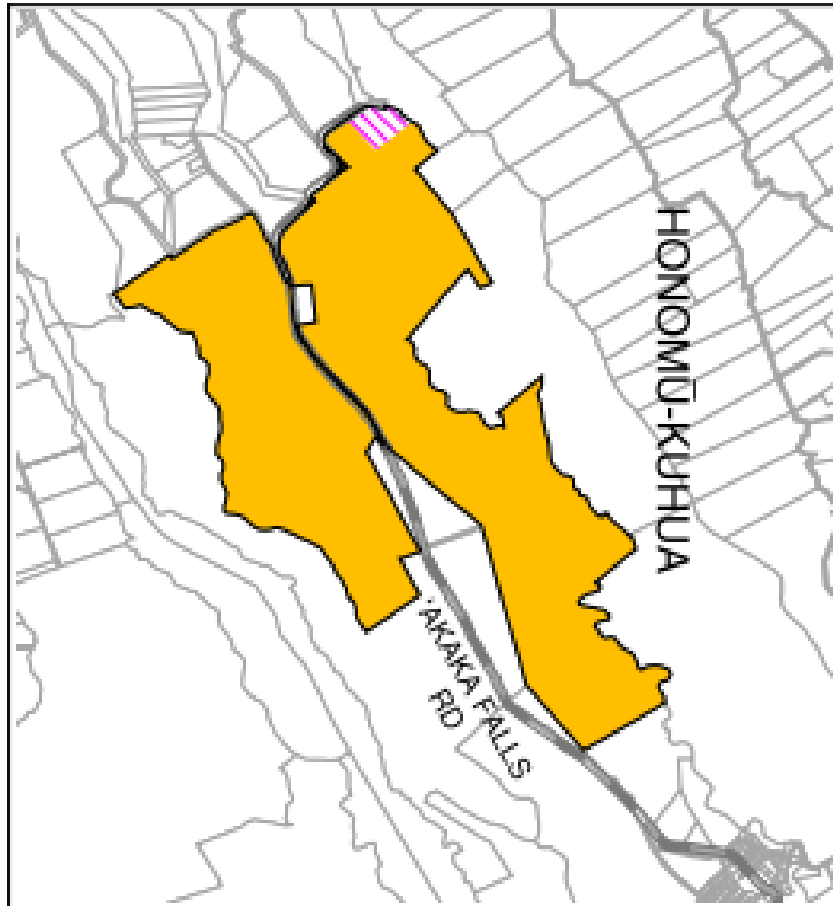
Honomu Subsistence Agriculture Homestead Master Plan and EA





East Hawai`i Plan Implementation Update

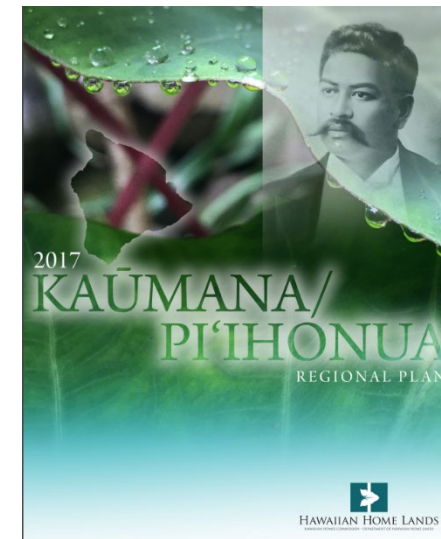
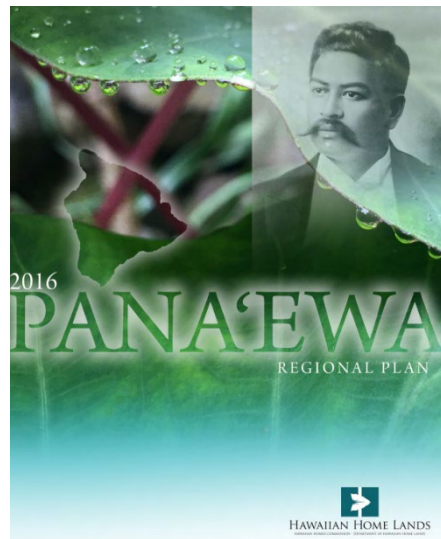
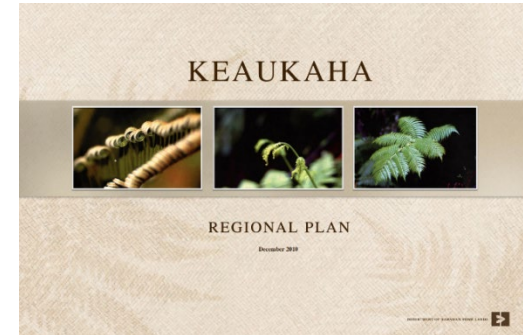
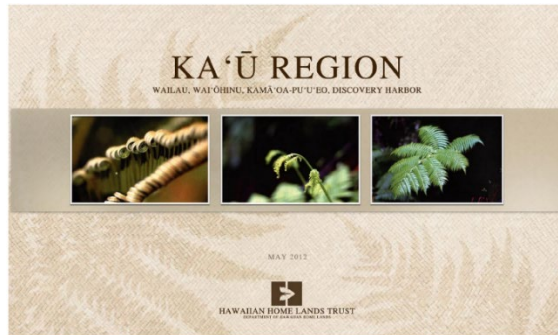
Honomu Subsistence Agriculture Homestead Master Plan and EA





East Hawai`i Plan Implementation Update

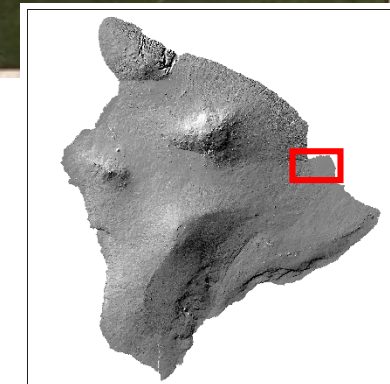
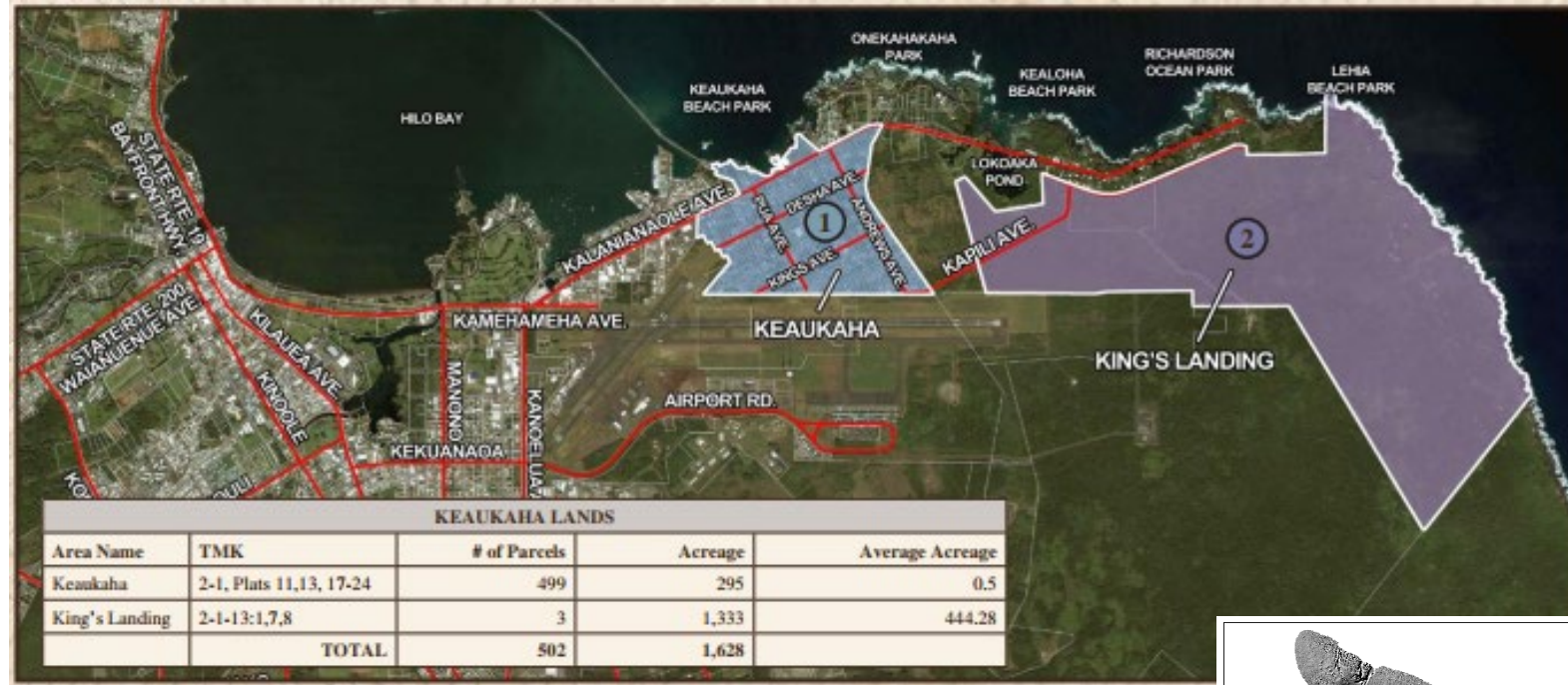
East Hawai'i Regional Plans





East Hawai`i Plan Implementation Update

Keaukaha Regional Plan



Priority Project:

Keaukaha Hawaiian Community Pavilion

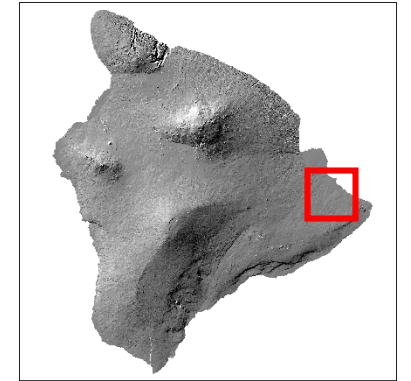


East Hawai`i Plan Implementation Update

Maku`u Regional Plan

Priority Projects:

- Maku`u Farmers' Association Community Center
- Maku`u Offsite Water System Phase 2
- Sustainability & Renewable Energy Initiatives
- Farm Plans, Capacity Building, & Promotion of Agriculture
- Lease Enforcement Provisions



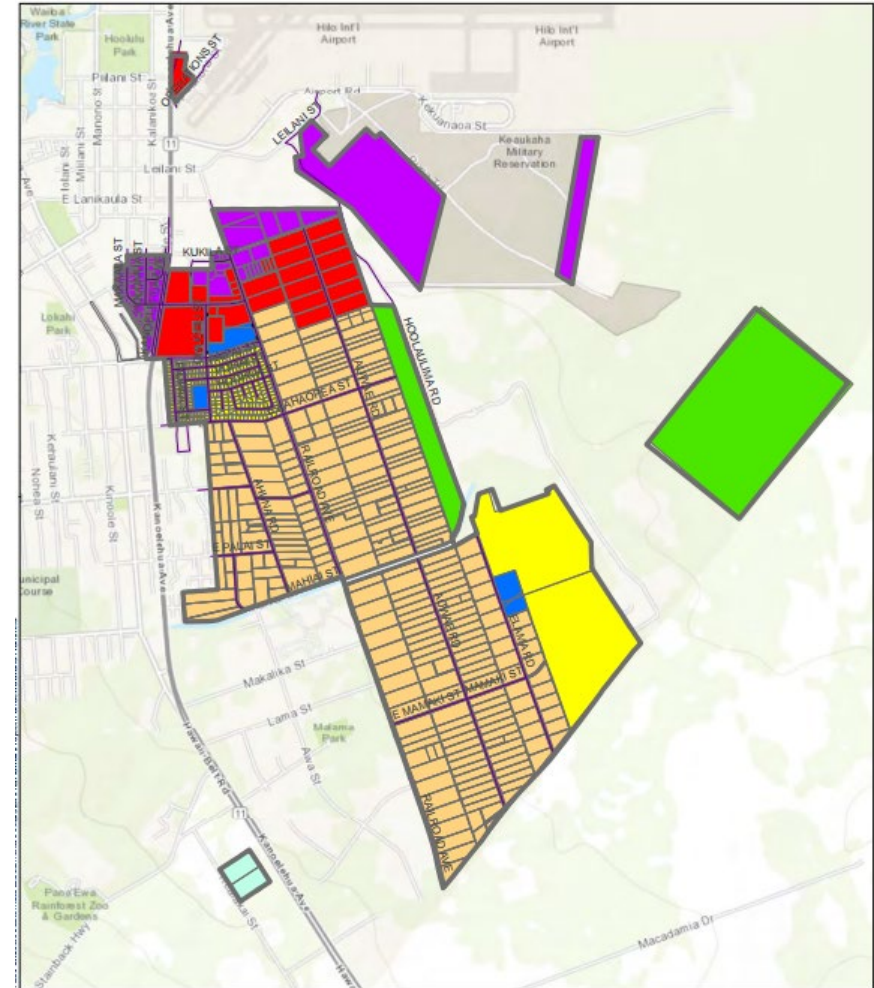
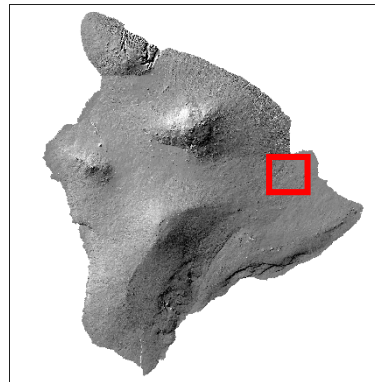


East Hawai`i Plan Implementation Update

Pana`ewa Regional Plan

Priority Projects:

- Project Kamoleao
- Pana`ewa Park & Family Center
- Agricultural Capacity Building Marketing & Training Center
- Traffic Calming & Safety Improvements on Railroad Ave. and Auwae Ave.
- Hawai`i Island Plan Update



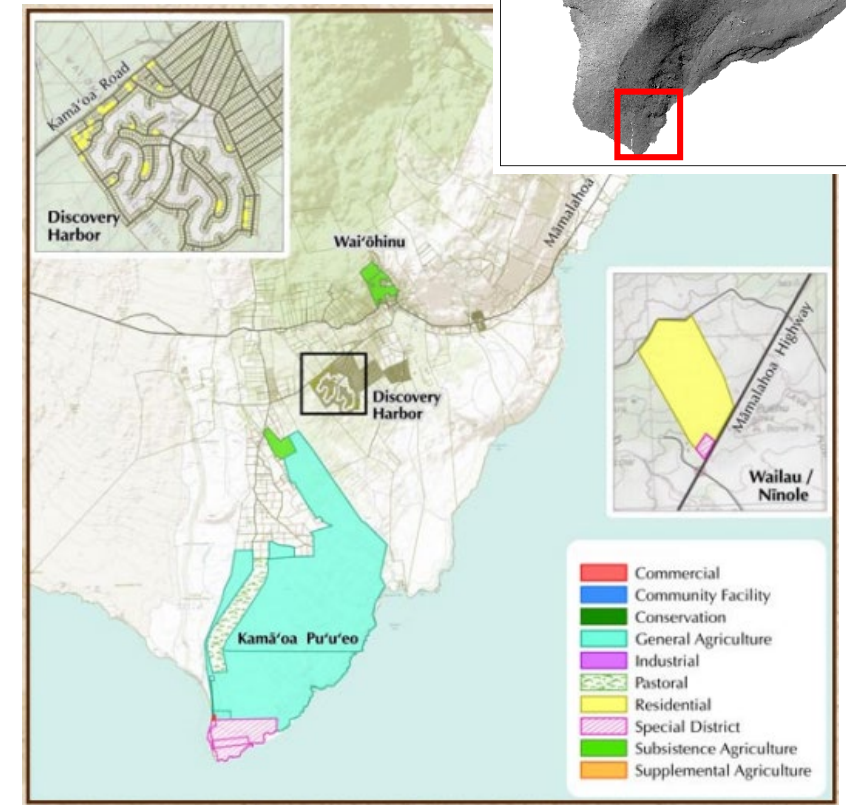


East Hawai`i Plan Implementation Update

Ka`ū Regional Plan

Priority Projects:

- Support Development of Affordable Homestead Alternative in Ka`ū
- Create a Ka`ū Homestead Community Association
- Obtain Additional Water for Homestead Lots in Kamā`oa, Pu`u`eo, and Waiohinu
- Protect and Preserve Cultural Sites and Natural Resources in Kamā`oa
- Agricultural Homestead Leases at Waiohinu and pursue partnership with DLNR for Hawaiian Homesteading



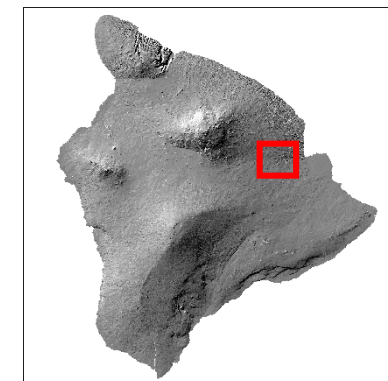
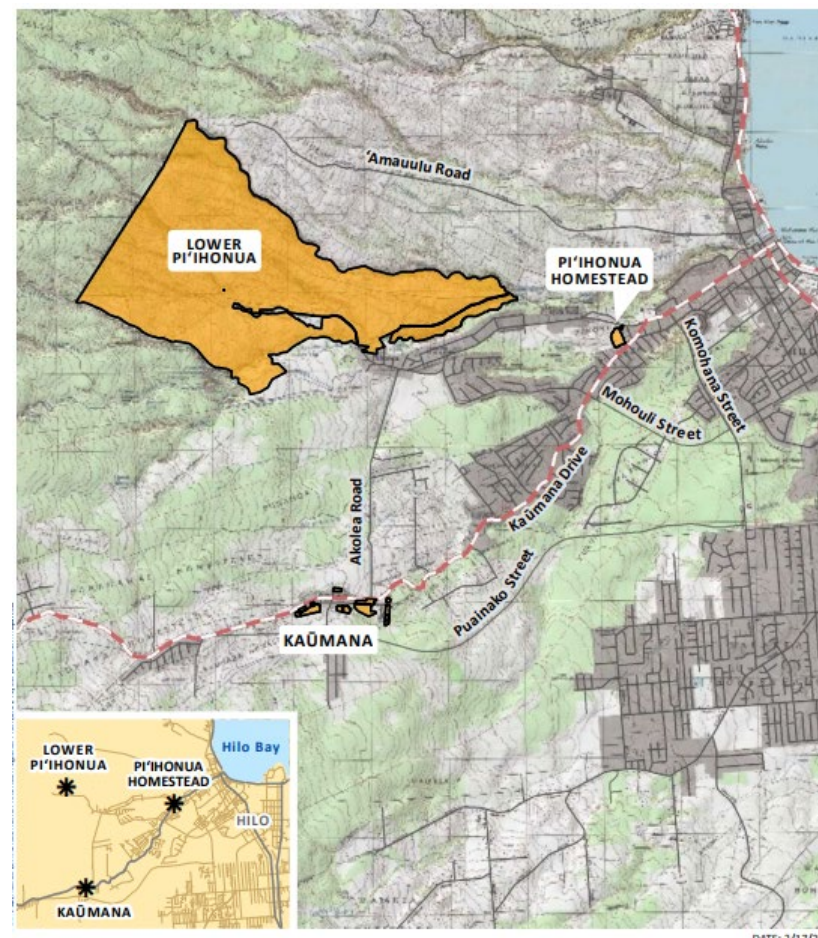


East Hawai`i Plan Implementation Update

Kaumana-Pi`ihonua Regional Plan

Priority Projects:

- Kaumana-Pi`ihonua Community Center
- Agriculture Sustainability – Community Pasture
- Community Tool-Shed and Work Days
- Pest-Control Mitigation and Removal (Kaumana Only)





Update on East Hawai'i Water Issues and Projects



Construction Updates



ISLAND OF HAWAII

EAST HAWAII PROJECTS

HONOMU

KEAUKAHA

PANAewa

KAUMANA

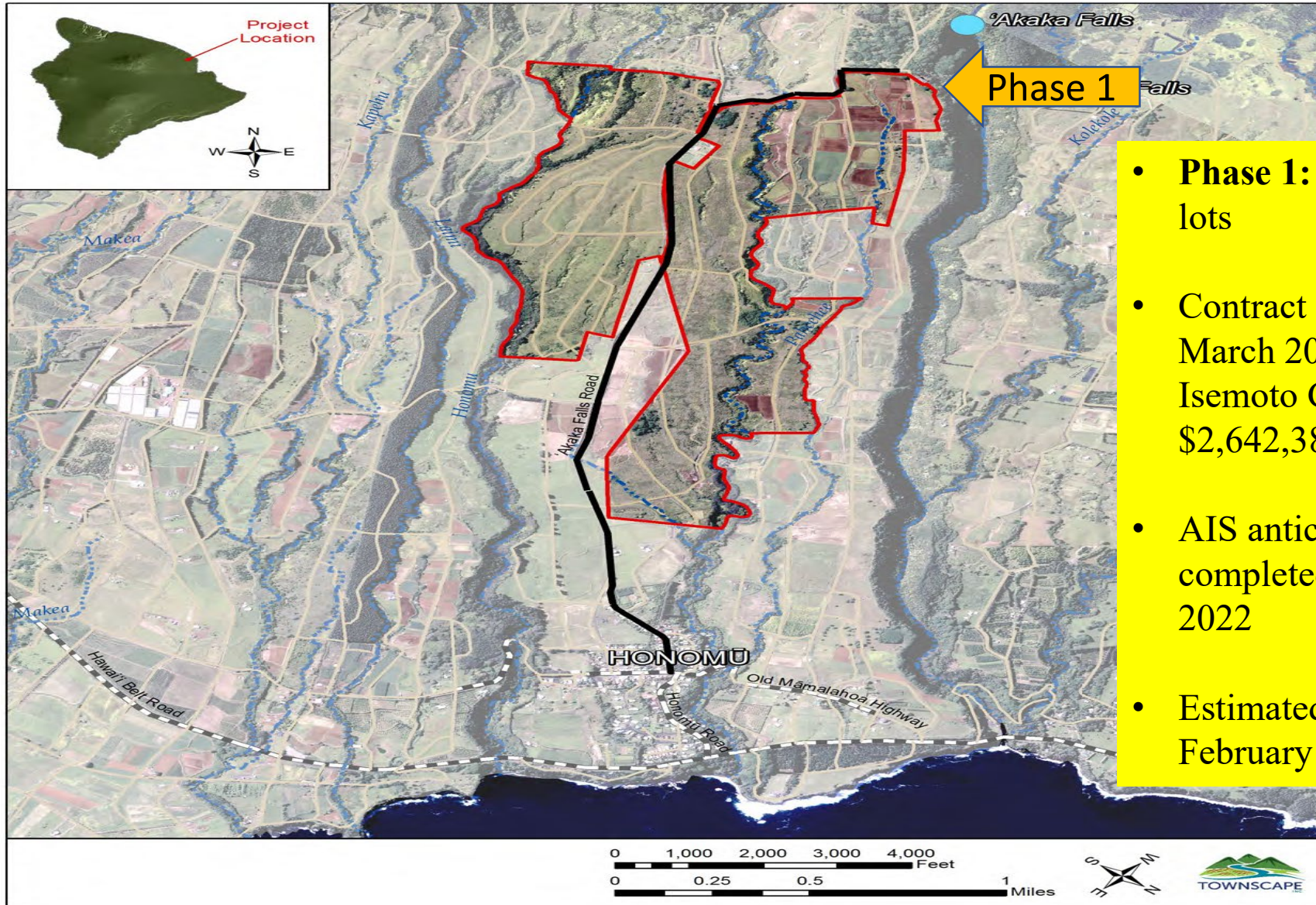
MAKUU

KA'U





Honomu Subsistence Agriculture Project Area



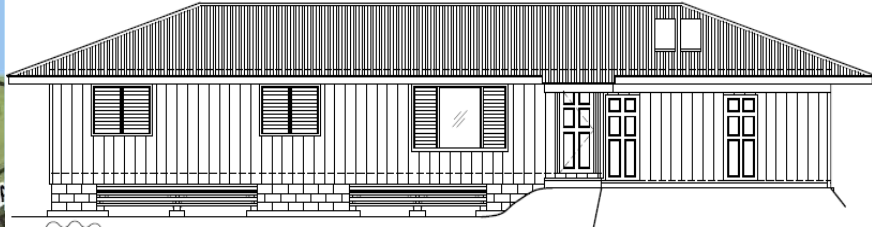
- **Phase 1:** 16 One-acre lots
- Contract awarded in March 2021 to Isemoto Contracting: \$2,642,388
- AIS anticipated to be completed January 2022
- Estimated NTP February 2022



Hawaii Community College Model Homes Project

Estimated Budget: \$275,000

Future HCC Home No. 55
354 Nahalea Ave.



HCC Home No. 52
369 Lauae Yung Ave



HCC Home No. 51
338 Lauae Yung Ave



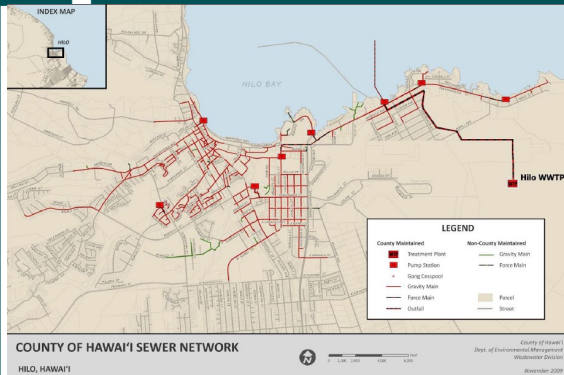
HCC Home No. 54
76 Andrews Ave.



HCC Home No. 53
371 Lauae Yung Ave.



Keaukaha Phase 1 Sewer Improvements



DRAWING INDEX		
SHT. NO.	DWG. NO.	DESCRIPTION
1	T-1.0	TITLE SHEET AND DRAWING INDEX
2	C-1.0	CIVIL NOTES
3	C-1.1	CIVIL NOTES
4	C-1.2	CIVIL NOTES
5	C-1.3	CIVIL NOTES, ABBREVIATIONS AND BMP DETAILS
6	C-2.0	SEWERLINE "A" PLAN AND PROFILE STA. 0+00 TO STA. 3+50
7	C-3.0	CIVIL DETAILS
8	C-3.1	CIVIL DETAILS

COH existing sewer lines

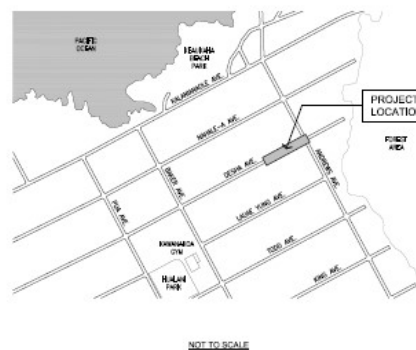


PHASE 1 - KEAUKAHA SEWERLINE

DESHA AVENUE CONNECT TO
ANDREWS AVENUE 10" SEWERLINE
HILO, HAWAII 96720

DEPARTMENT OF HAWAIIAN HOME LANDS
LAND DEVELOPMENT DIVISION
91-5420 KAPOLEI PARKWAY
KAPOLEI, HI 96707

PROJECT SITE VICINITY MAP



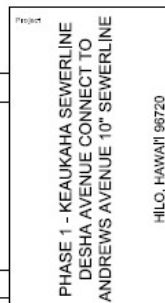
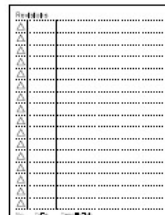
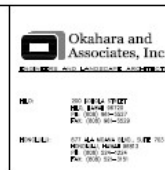
CONSULTANTS

CIVIL ENGINEER:
OKAHARA AND ASSOCIATES, INC.
200 KOHOLA STREET
HILO, HAWAII 96720

LAND SURVEYOR:
ISLAND SURVEY
17 NANAKULA STREET, SUITE 102
HILO, HAWAII 96720

APPROVALS

DIRECTOR OF DEPARTMENT OF ENVIRONMENTAL MANAGEMENT DATE
COUNTY OF HAWAII



Scope of Work:
Instead of
installing
Septic Tanks,
the new sewer
line will allow
for connection
and assist with
the closure of
cesspools.

Schedule for
Bidding in
Fall - 2021
COST EST.
\$300,000

10 Affected lots – 4 vacant DHHL lots



Panaewa Subsistence Agricultural Lots

SUBDIVISION OF LOT 185 SITE IMPROVEMENTS FOR 16 HALF-ACRE LOTS AWARDED TO DRAINPIPE PLUMBING & SOLAR, LLC



**CONSTRUCTION STARTED JULY 7, 2021
CONSTRUCTION: \$2,497,887**

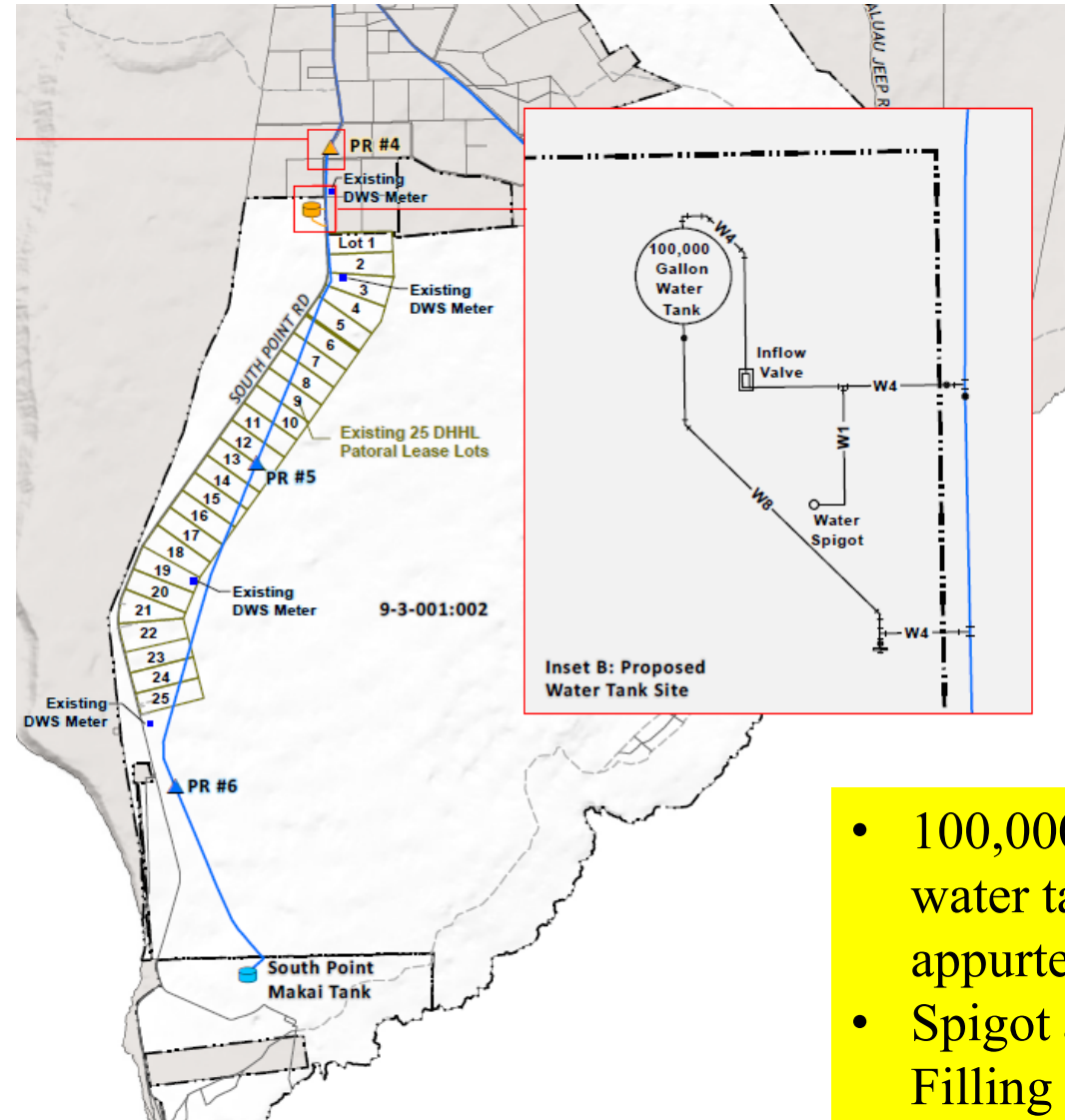






Ka'ū Water System – Phase 1

- 100,000 gallon water storage tank and appurtenances, including a water filling station with spigot, on Hawaiian Home Lands.
- Construction Contract
 - Executed: 6/1/2021
 - Isemoto Contracting Co., Ltd.
 - \$2,736,327.00
- Construction Pending
 - AIS Revision and Approval by SHPD
 - Archaeological Monitoring Plan Submittal and Approval by SHPD
 - County Re-Approval of Plans

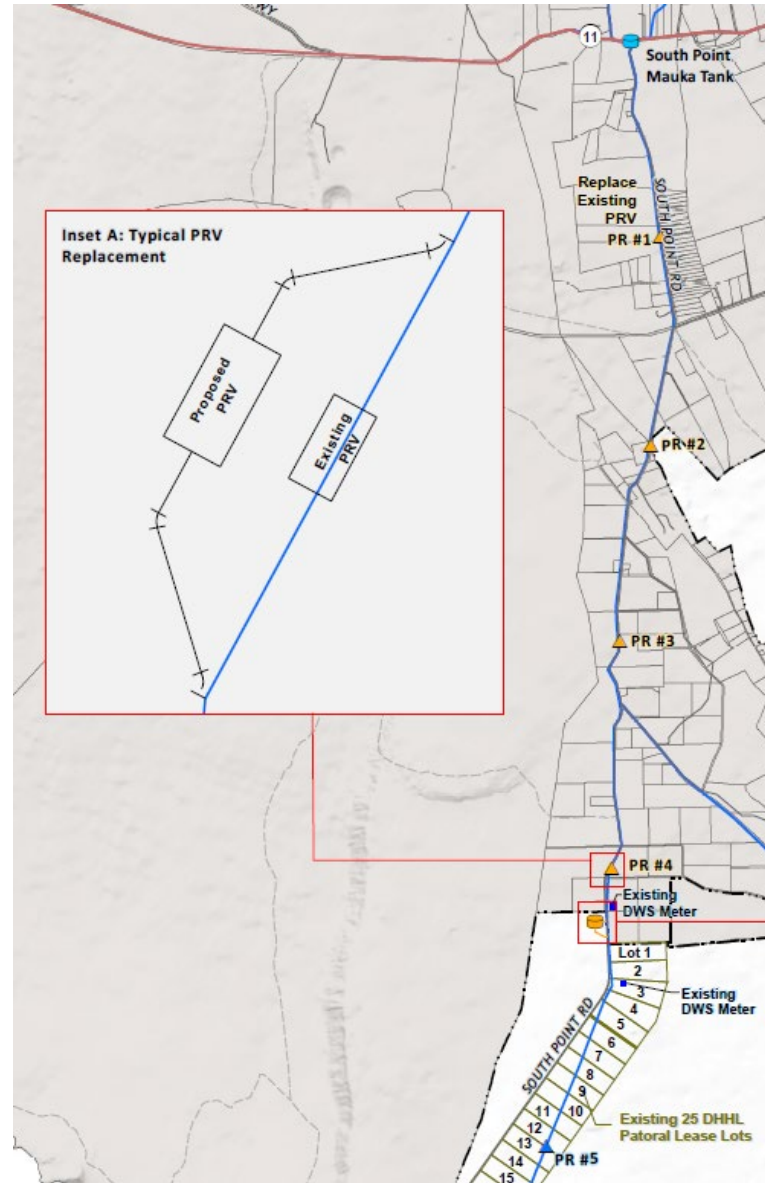


- 100,000 gallon water tank with appurtenances.
- Spigot at Water Filling Station.



Ka'ū Water System – Phase 2

- Replacement/upgrade of Pressure Regulating Valve Stations (PRV/PR)
 - PR #1
 - PR #2
 - PR #3
 - PR #4
- DHHL received \$1,000,000.00 in Trust Funds.
- Design/Consulting contract, including Archaeological work – currently being negotiated with Group 70 International, Inc.

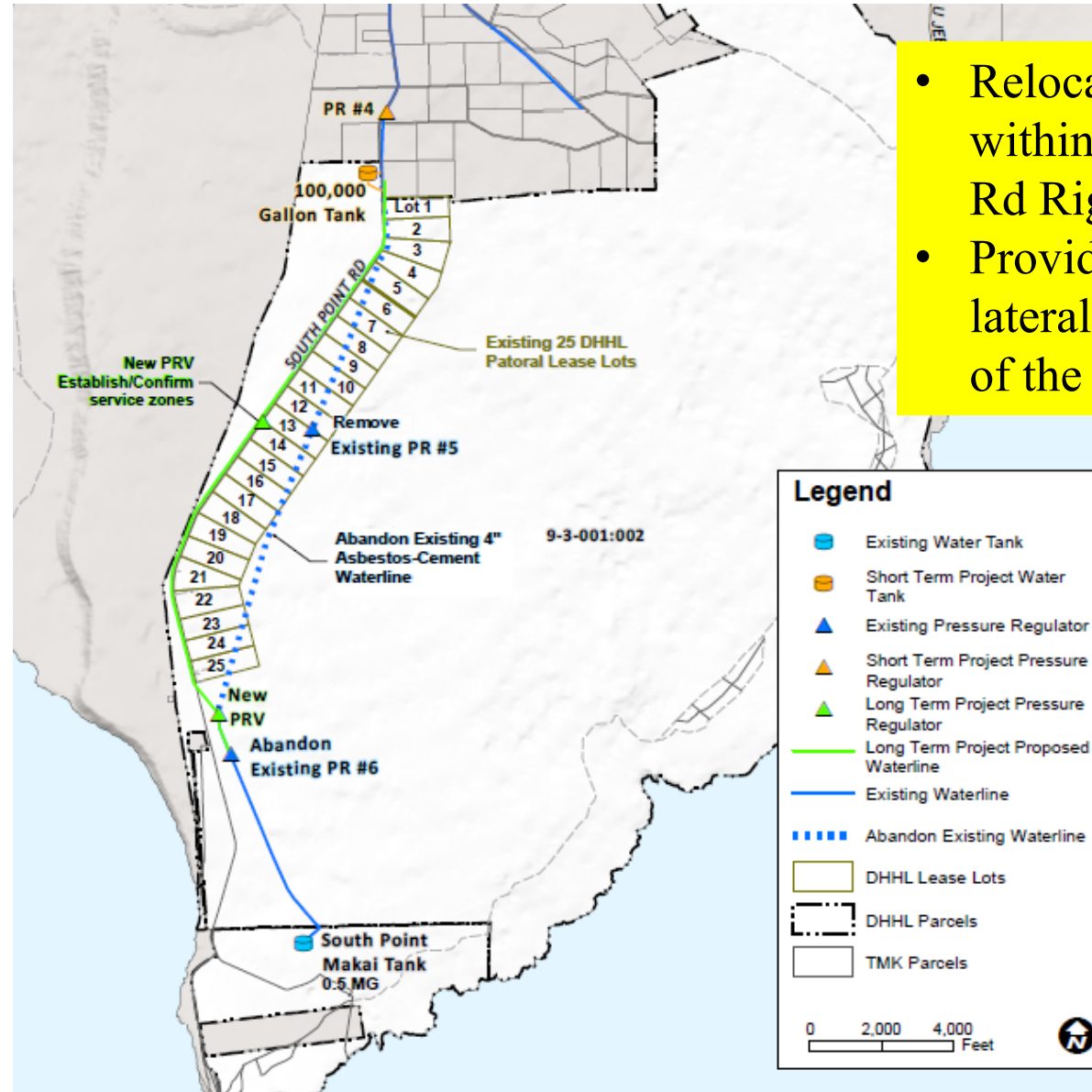


- PRV Upgrade/Replacement



Ka'ū Water System– Future Phase(s)

- Relocate existing waterline from within lots, to the South Point Road right-of-way.
- Install water laterals for water meters to each of the 25 Pastoral Lots.
- Estimated cost: \$20,000,000.00
- Proposed request to Legislature in Fiscal Biennium Budget 2021-2023



- Relocate waterline to within the South Point Rd Right-of-Way
- Provide water laterals/meters to each of the 25 lots.



Homestead Associations

- Homestead Community Updates



Mahalo



DEPARTMENT OF HAWAIIAN HOME LANDS

www.dhhl.hawaii.gov