



HAWAIIAN HOME LANDS

HAWAIIAN HOMES COMMISSION • DEPARTMENT OF HAWAIIAN HOME LANDS

Community Information Meeting

Kalāwahine Community

October 21, 2021



Agenda

- Welcome
- Tree Trimming Status Update
- Speed Humps
- Sandwich Isle Communications
- Board of Water Supply Update



Meeting Kuleana

- 1) Be respectful of the person talking – please do not interrupt the person that is talking;
- 2) Wait for the facilitator to call on you or type your question into the chat box
- 3) When addressing other participants (verbally or in the chat box), be respectful, show aloha, treat others how you would like to be treated;
- 4) Agree to disagree — accept that others may have different perspectives and opinions.
- 5) Have an open mind — take home new ideas or new information.



Tree Trimming

Project: Tree removal and pruning of overgrown trees have not been maintained for years

Contractor: Sunshine Landscape

Timeline: Now through November, weather permitting

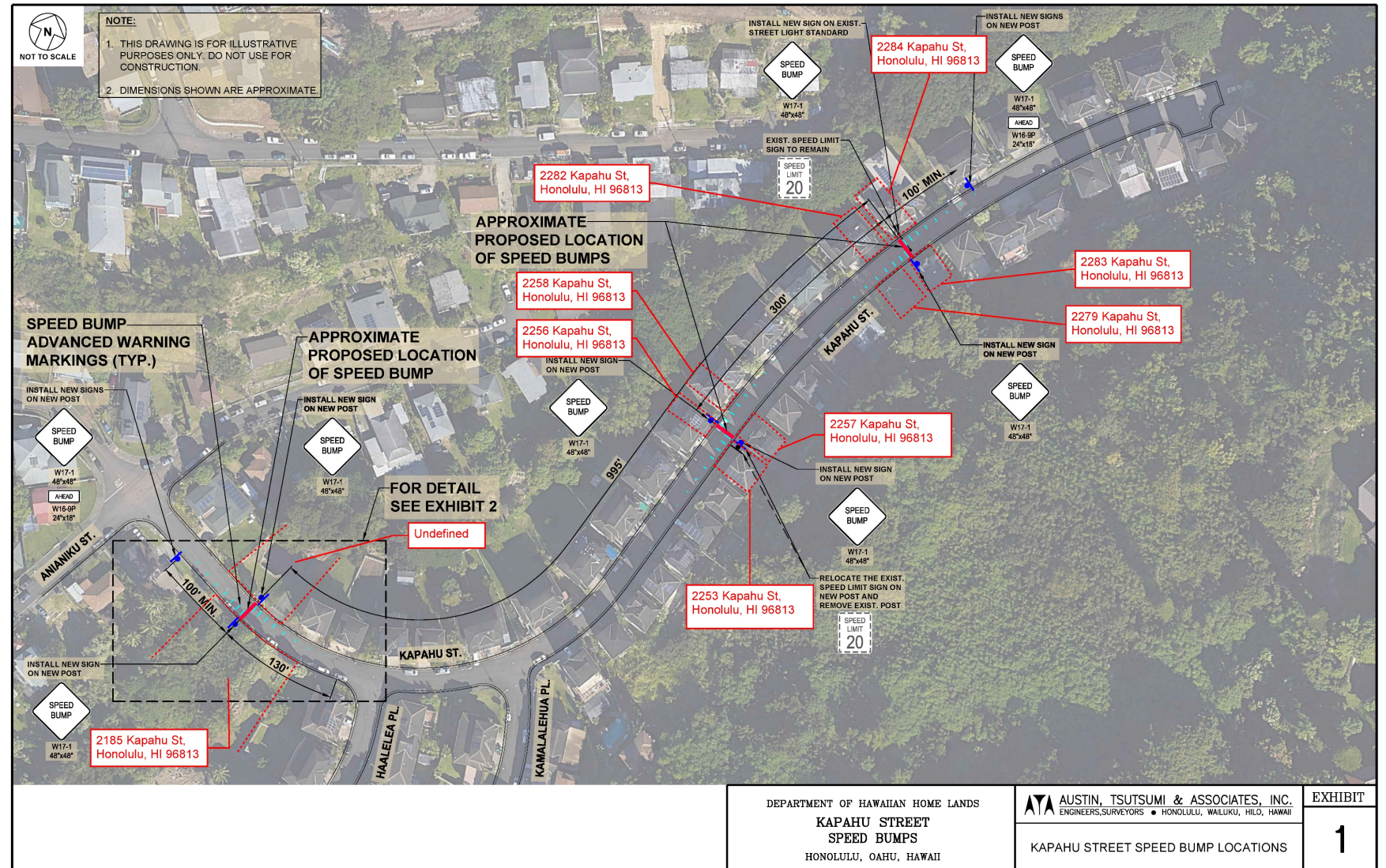
Location: Mauka and Makai sides of Kapahu Street

Large trees on Mauka side to be removed

Kukui Trees on Mauka side have been marked to be pruned but not removed



Timeline: Bids have been received by DHHL a contractor has been selected. Timeline to follow

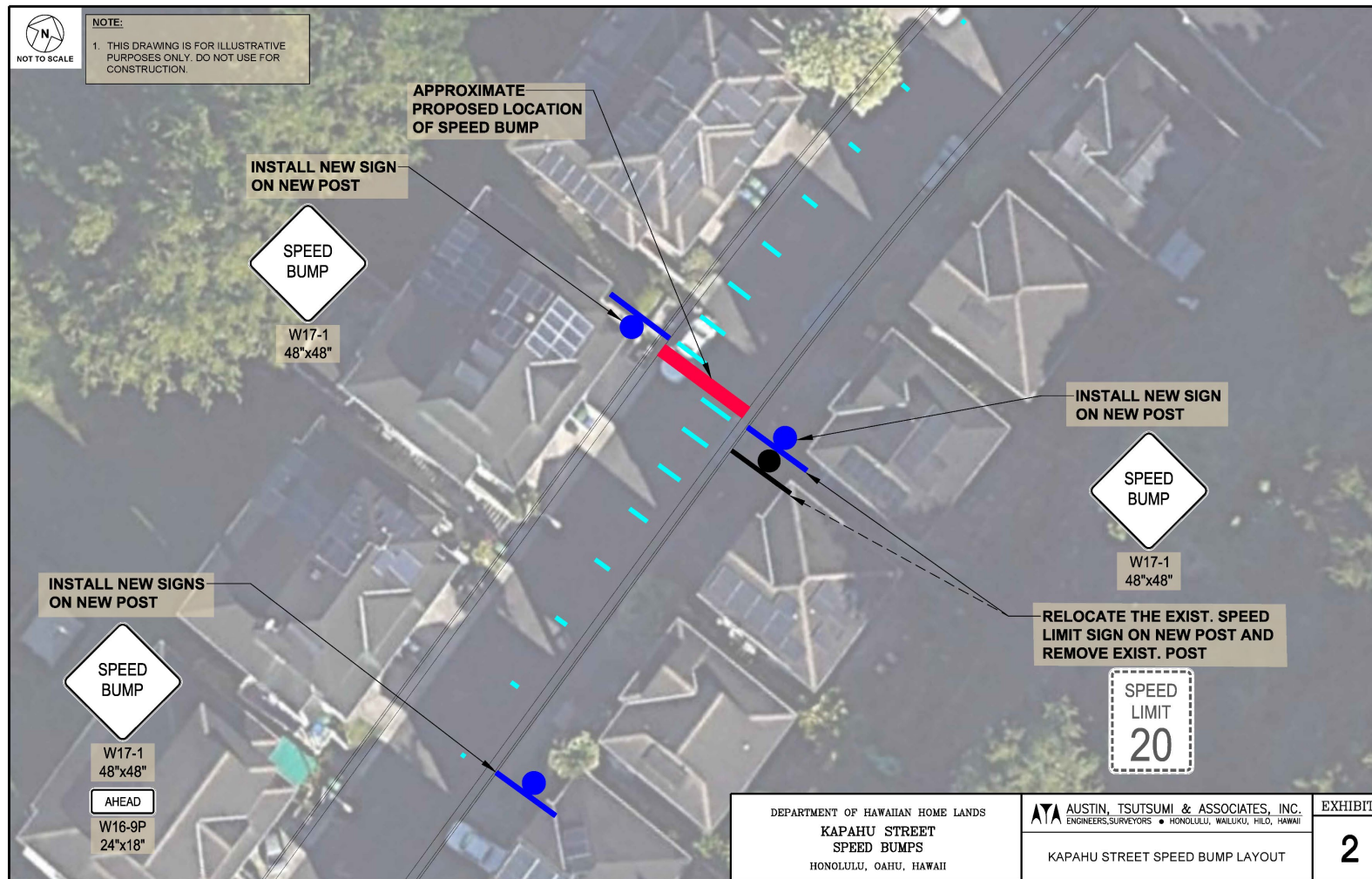




Traffic Calming Measures

Project: Installation of speed humps on Kapahu Street

Timeline: Bids have been received by DHHL a contractor has been selected. Timeline to follow





Traffic Calming Measures

Project: Installation of speed humps on Kapahu Street

Timeline: Bids have been received by DHHL a contractor has been selected. Timeline to follow



PICTURED: SAFETY RIDER SPEED HUMP



Sandwich Isle Communications

August 31, 2021, Hawaiian Telcom completed its purchase of inter-island submarine and middle-mile terrestrial fiber infrastructure assets from the bankruptcy estate of the Paniolo Cable Company, a firm previously within the Sandwich Isles Communications, Inc. (SIC) family of companies.

The purchase of the bankrupt Paniolo Cable Company assets, a process outside of DHHL jurisdiction, did not include any previously negotiated commercial agreements with SIC.

A new arrangement for SIC's use of the system will have to be negotiated between the company and the new ownership, Hawaiian Telcom.

The Hawaiian Homes Commission (HHC) recently issued a Right-of-Entry permit to Hawaiian Telcom, Inc., allowing the company temporary access to newly acquired telecommunications assets on Hawaiian Homes Lands.

Beneficiary Consultation meetings will be conducted by the Department of Hawaiian Home Lands (DHHL) ahead of a long-term land disposition to Hawaiian Telcom.



BWS Water Tank

- **Project Status**

- The project has gone out to bid and BWS is currently completing its procurement process.
- Each project has a construction timeline of around 2 years, but they will be running concurrently
- Notice to proceed could be as early as the beginning of next year

- **Community Park**

- Confirm that there is interest from the community to use the park
- Access for traditional and customary practices
- Community liaison



Mahalo



DEPARTMENT OF HAWAIIAN HOME LANDS

www.dhhl.hawaii.gov/po/oahu