


HAWAIIAN HOME LANDS
HAWAIIAN HOMES COMMISSION • DEPARTMENT OF HAWAIIAN HOME LANDS

**Beneficiary Informational Meeting:
‘Ualapu‘e Kuleana Homestead Project**

Virtual Meeting
October 14, 2021, 6:00 PM – 7:00 PM

DEPARTMENT OF HAWAIIAN HOME LANDS – PLANNING OFFICE

1



Agenda

- Opening Pule
- Introductions
- Review Agenda, Purpose, Outcomes
- ‘Ualapu‘e Kuleana Homestead Project
- Brief Update – Other DHHL Homestead Lot Development Projects
- Questions/Discussion
- Next Steps
- Closing

DEPARTMENT OF HAWAIIAN HOME LANDS – PLANNING OFFICE

2



Meeting Kuleana

- Be respectful of the person talking – please do not interrupt
- Wait for facilitator to call on you or type your question into the chat box
- When addressing other participants, be respectful, show aloha, treat others how you would like to be treated
- Agree to disagree – accept that others may have different perspectives and opinions
- Have an open mind – take home new ideas and information
- Everyone gets a chance to ask/speak/comment, before speaking again

DEPARTMENT OF HAWAIIAN HOME LANDS – PLANNING OFFICE

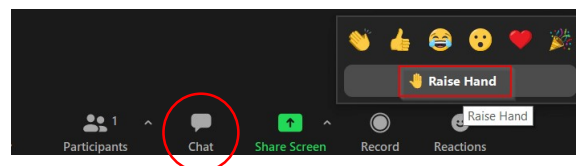
3



How to Share Your Input

During Meeting

- Type into the “Chat” box
- Use “Raise Hand” to ask a question or share your mana‘o




Presentation slides will be posted to the DHHL page at
<https://dhhl.hawaii.gov/po/molokai/ualapuc-kuleana-homestead-project/>

DEPARTMENT OF HAWAIIAN HOME LANDS – PLANNING OFFICE

4

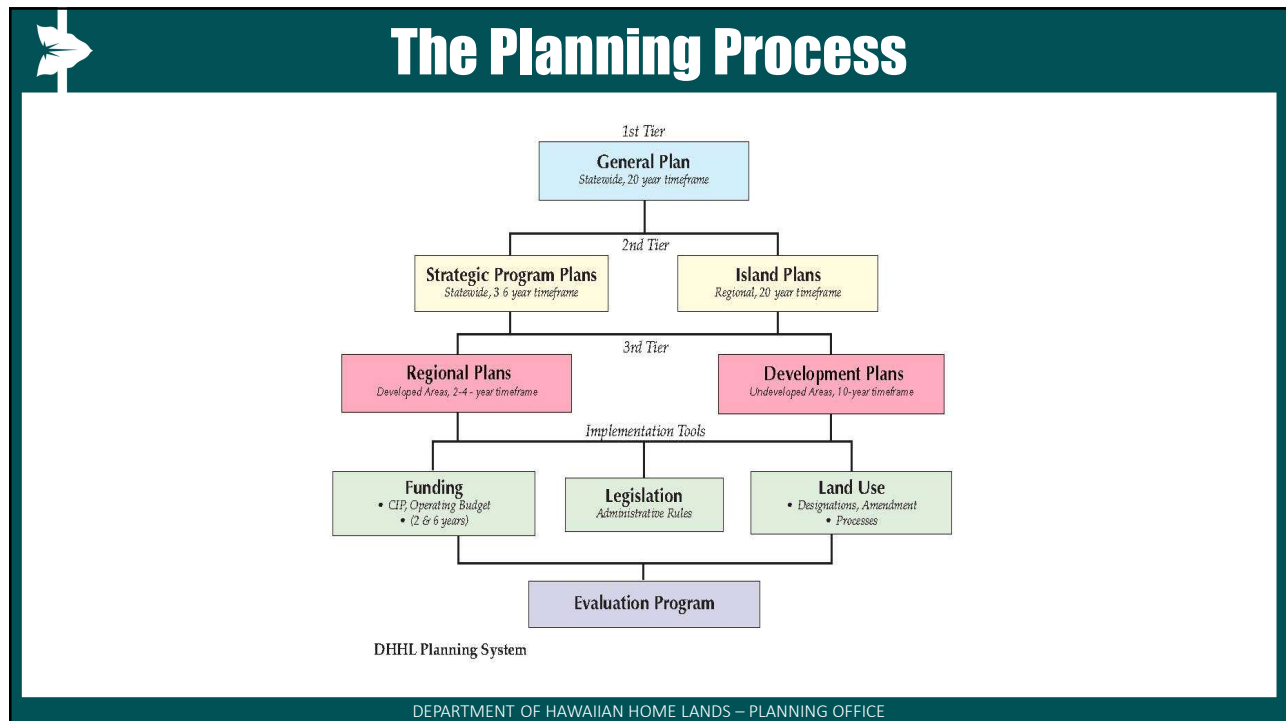
The Hawaiian Homes Commission Act



Prince Jonah Kūhiō Kalanianaʻole

DEPARTMENT OF HAWAIIAN HOME LANDS – PLANNING OFFICE

5



6

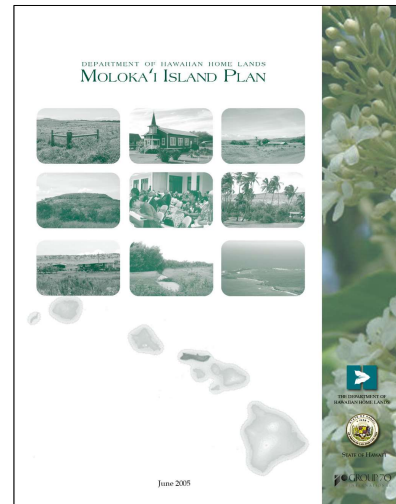


Moloka'i Island Plan Update

The Moloka'i Island Plan was created through consultation with the beneficiary community and accepted by the Hawaiian Homes Commission on June 21, 2005.

‘Ualapu‘e was identified as a high priority development area and was selected as the first priority of the Moloka'i Island Plan for new residential areas.

Land use was designated as Residential, General Agriculture, Special District, and Community Use.



<http://dhhl.hawaii.gov/po/molokai>

DEPARTMENT OF HAWAIIAN HOME LANDS – PLANNING OFFICE

7

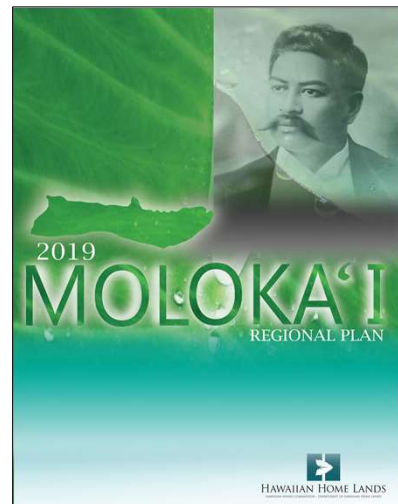


Moloka'i Regional Plan Update

The Moloka'i Regional Plan was updated and approved by the Hawaiian Homes Commission on February 18, 2020 following a series of beneficiary consultation meetings.

- November 1, 2018
- December 5, 2018
- January 30, 2019
- April 11, 2019
- June 26, 2019
- October 24, 2019

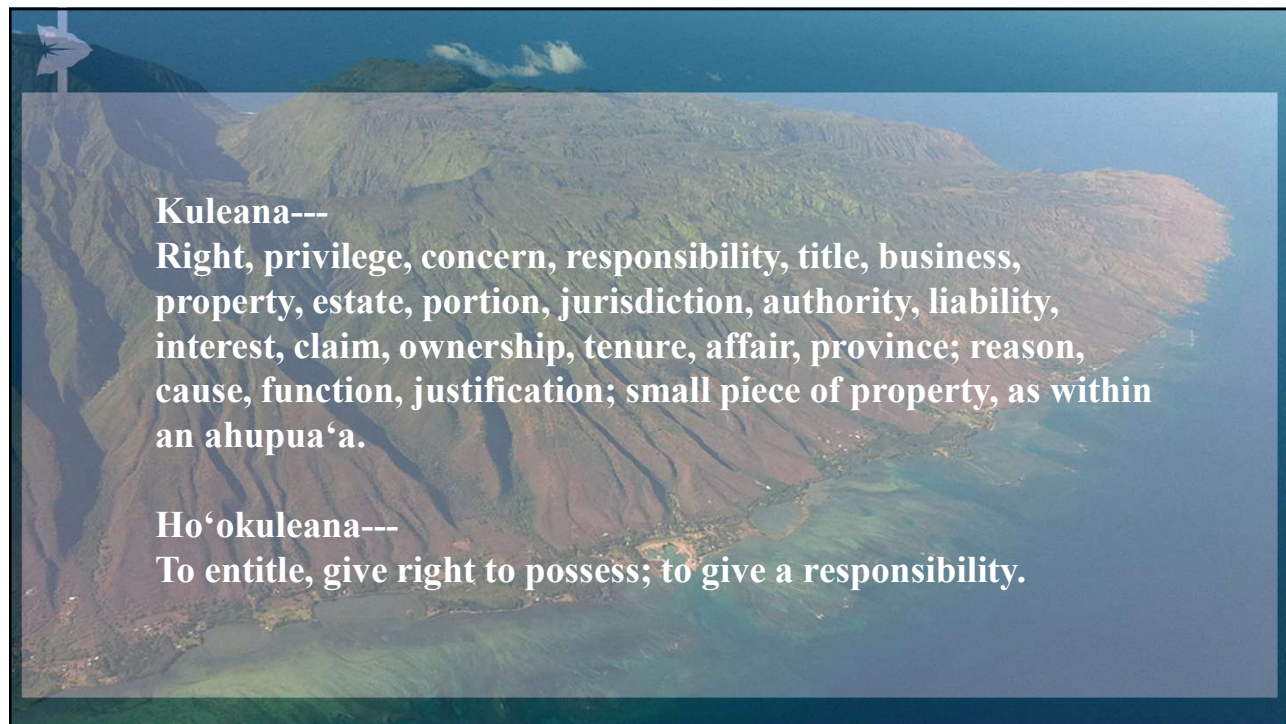
From this, the ‘Ualapu‘e Kuleana Homestead Project was identified as a regional plan priority project.



<http://dhhl.hawaii.gov/po/molokai>

DEPARTMENT OF HAWAIIAN HOME LANDS – PLANNING OFFICE

8



9

Living on the Waitlist

- There are 2,144* combined ag, residential and pastoral wait-listers for the Island of Moloka'i
 - Agriculture: 1,100
 - Residential: 837
 - Pastoral: 207
- Many people have been waiting for more than 30 years

*August 31,2021

DEPARTMENT OF HAWAIIAN HOME LANDS – PLANNING OFFICE

10



What is the Kuleana Homestead Program?

Hawai'i Administrative Rules §10-3-30

- Kuleana Homestead leases are designated for unimproved available Hawaiian home lands
- Available Hawaiian home lands may be selected for kuleana homestead leases by the commission because of excessive costs to develop the tract, due to such factors as:
 - Physical characteristics of the land
 - Distance from existing utilities



DEPARTMENT OF HAWAIIAN HOME LANDS – PLANNING OFFICE

11



What are the Responsibilities of DHHL?



- The Hawaiian Homes Commission determines which Waitlist(s) to use to make kuleana awards
- The Department is required to provide:
 - Metes and bounds descriptions of lots; and
 - An unpaved right-of-way to the awarded lots

DEPARTMENT OF HAWAIIAN HOME LANDS – PLANNING OFFICE

12



What are the Responsibilities of the Lessees?



- Suitable for use by lessees who wish **immediate access** to the land for subsistence uses and who are willing to live on the land and accept an unimproved lot
 - Such parcels only require a right of way to access the site
- Lessees must participate as an active member in the kuleana homestead association to develop and comply with the association's rules and agreements
- Lessees must participate in the maintenance of the right-of-way to the kuleana homestead tract and lots

DEPARTMENT OF HAWAIIAN HOME LANDS – PLANNING OFFICE

13



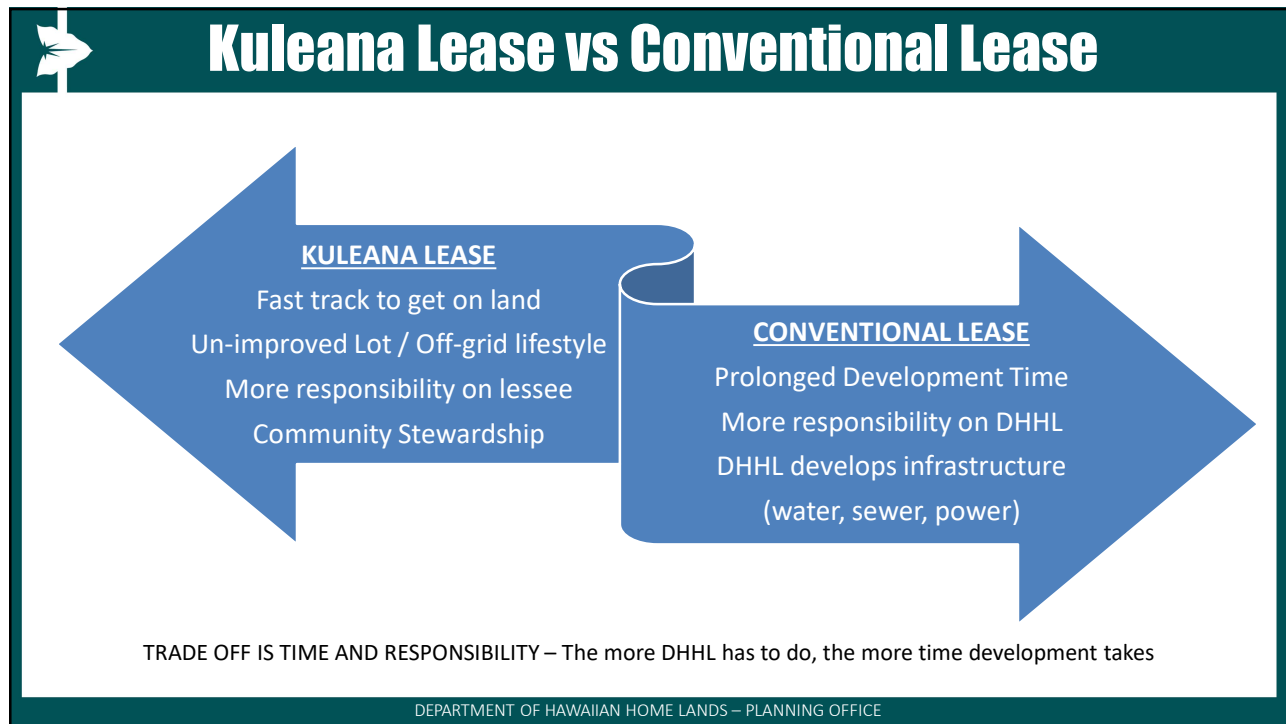
Why do I want a Kuleana Homestead Lot?

- Shorter time on the waitlist
- Larger number of leases to be awarded
- Ability for homesteaders to start small and expand their activity over time
- Community-based management

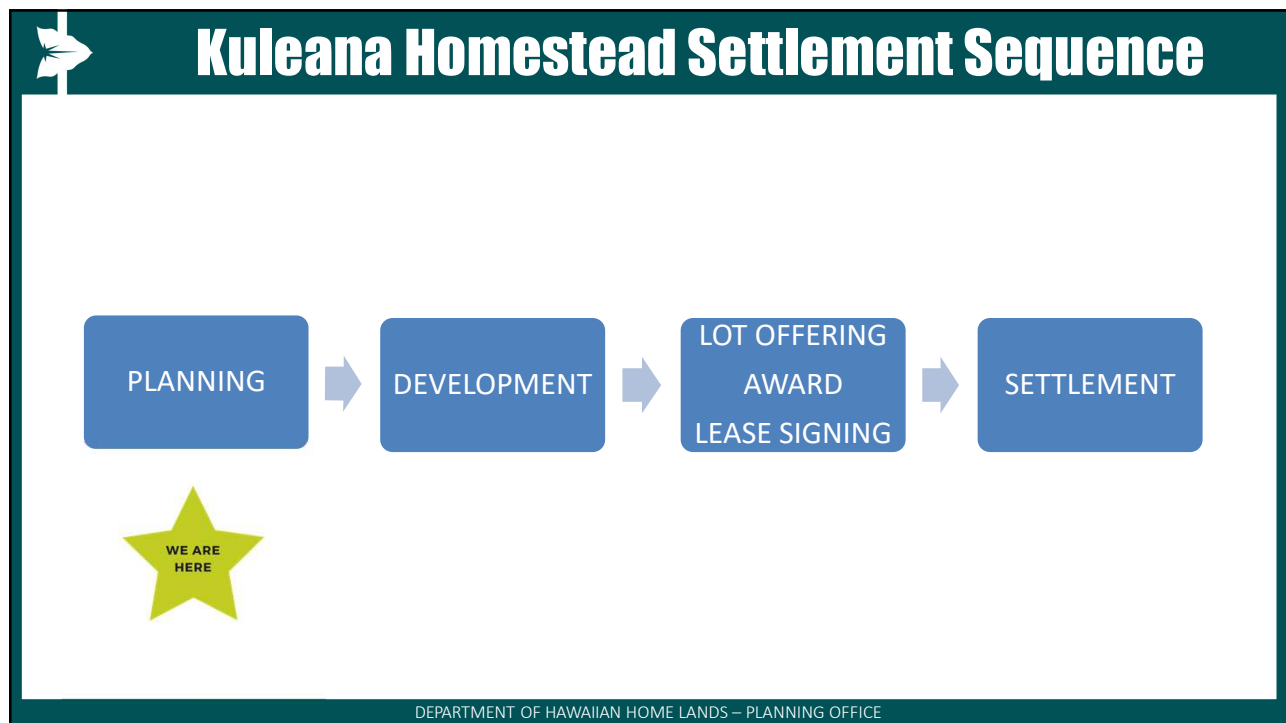


DEPARTMENT OF HAWAIIAN HOME LANDS – PLANNING OFFICE

14



15

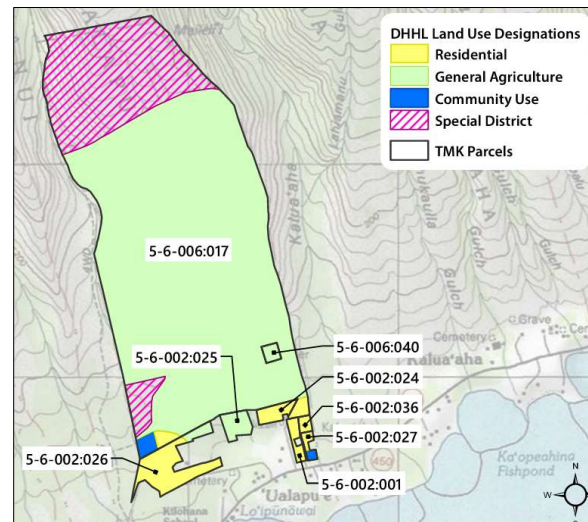


16



‘Ualapu‘e Kuleana Homestead Project

- Identified as Priority Project #1 in DHHL Moloka‘i Regional Plan
- Plan approved by HHC (February 2020)
- Went through Beneficiary Consultation process for 15 months (beginning November 2018)



DEPARTMENT OF HAWAIIAN HOME LANDS – PLANNING OFFICE

17



Kuleana Homestead Settlement Plan



Hawai‘i Administrative Rules §10-3-30

- DHHL, together with interested applicants, will develop a plan for settlement and development of the designated tract, for approval by the HHC
- The Settlement Plan will include:
 - Location and description of the tract;
 - Approximate size and number of lots to be awarded;
 - Approximate location of community center and common areas;
 - Preliminary conceptual proposals for community management and economic development of adjacent department lands, if applicable;
 - Plan for the identification, protection and preservation of all significant historical, archaeological, and biological sites; and
 - Settlement timetable to commence after the award of the lots

DEPARTMENT OF HAWAIIAN HOME LANDS – PLANNING OFFICE

18

Environmental Assessment

Hawai'i Revised Statutes §343

Trigger: The project uses State Lands

Literature Review

- 2005 DHHL Moloka'i Island Plan
- 2019 DHHL Moloka'i Regional Plan
- Among several others

Existing Conditions

- Existing and Historical Land Use
- Topography
- Soil Resources / Erosion
- Rainfall
- Current road network
- Social and Economic Characteristics

Site Studies

- Aerial Survey
- Archaeological Reconnaissance Survey
- Cultural Impact Assessment
- Biological Assessment

Additional Considerations

- Wildfire Prevention Management
- Consultation with Kupuna and Cultural Practitioners
- Input provided through community consultation process


DEPARTMENT OF HAWAIIAN HOME LANDS – PLANNING OFFICE

19

Expected Outcomes

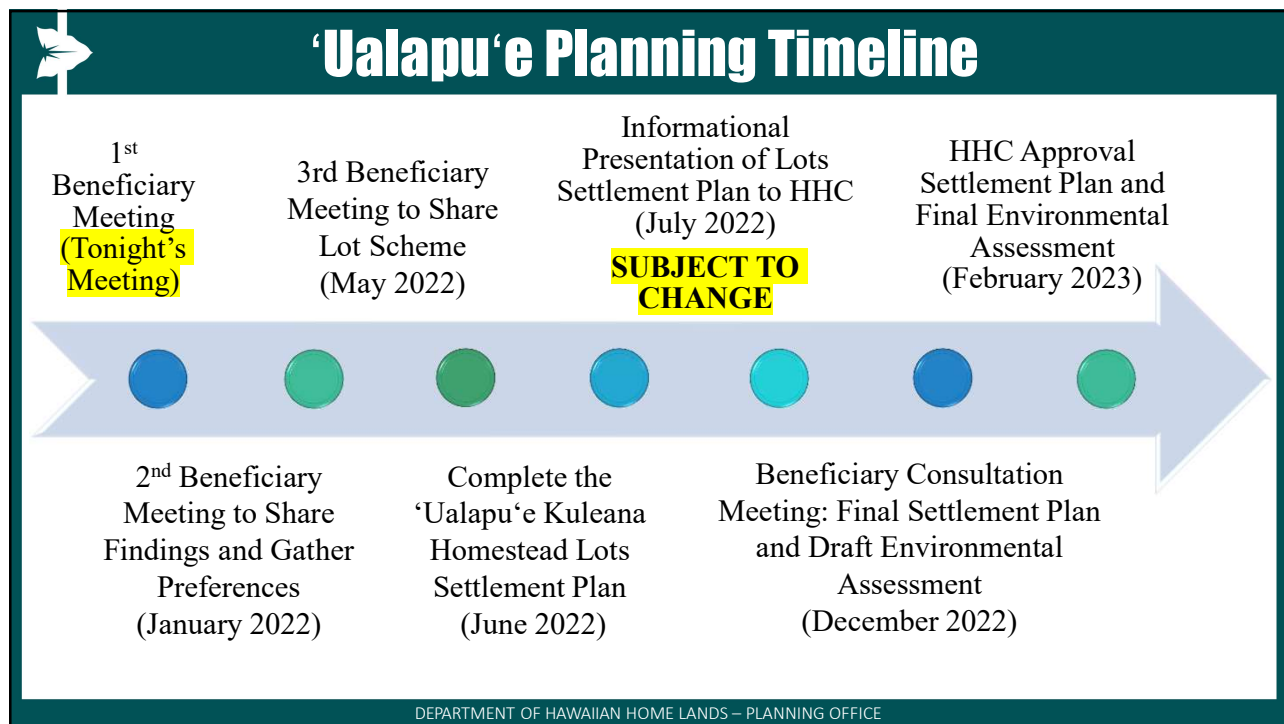
PLANNING PHASE

- Kuleana Homestead Settlement Plan
- HRS 343 Environmental Assessment
- 2005 Island Plan Amendments
(if any, for land use designation)

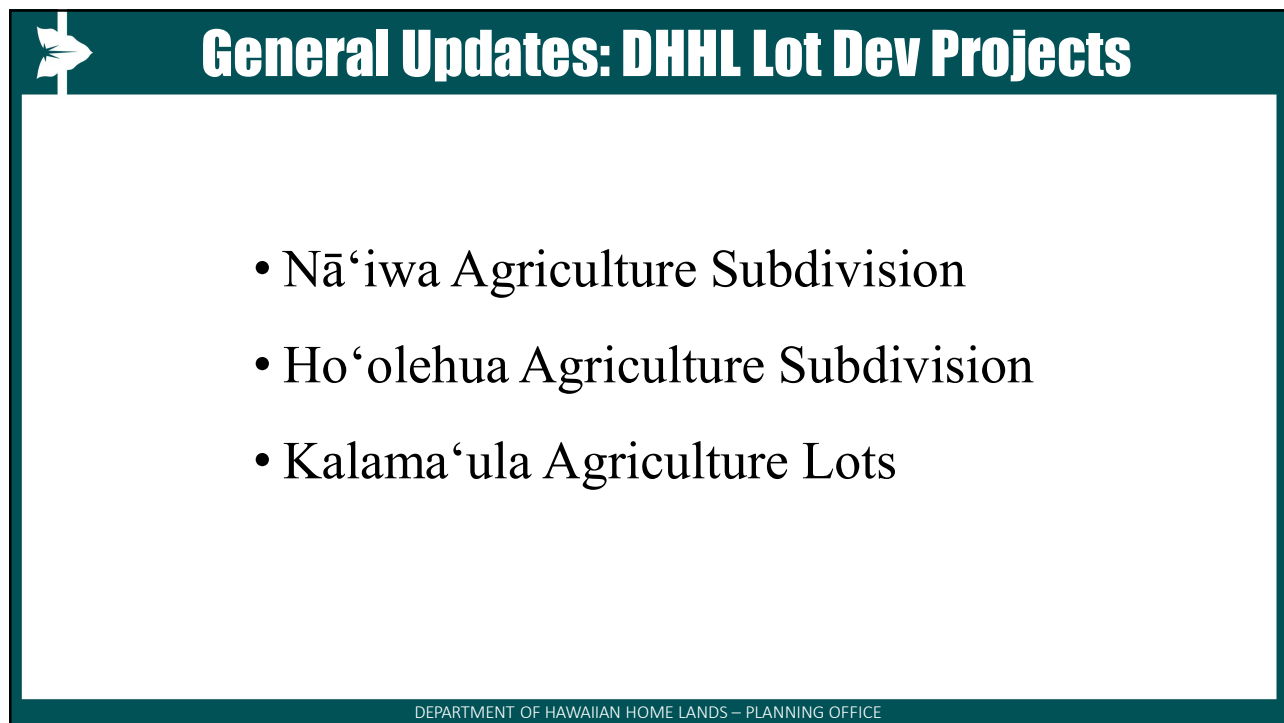


DEPARTMENT OF HAWAIIAN HOME LANDS – PLANNING OFFICE

20



21



22



Questions?



DEPARTMENT OF HAWAIIAN HOME LANDS

Contact:
[dhhl.planning@hawaii.gov](mailto:dhdl.planning@hawaii.gov)

Project Information Website:
dhhl.hawaii.gov/po/molokai

DEPARTMENT OF HAWAIIAN HOME LANDS – PLANNING OFFICE