



HAWAIIAN HOME LANDS  
HAWAIIAN HOMES COMMISSION  
DEPARTMENT OF HAWAIIAN HOME LANDS

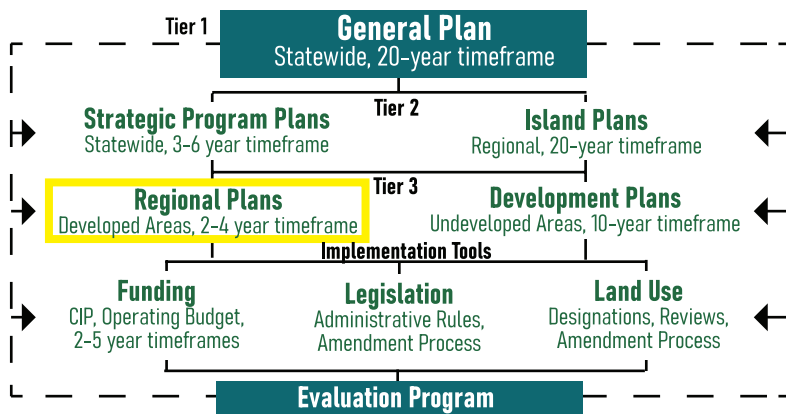
# ANAHOLA

## Regional Plan Update

The Anahola Regional Plan is one of twenty-two regional plans the Department of Hawaiian Home Lands (DHHL) has developed statewide. DHHL Regional Plans allow homestead lessees to identify and solve their own issues and concerns. With support from DHHL and other partners, the planning process and resulting updated Regional Plan are intended to stimulate capacity-building, and to encourage stakeholders to champion the projects that will help to better their community.

The existing Anahola Regional plan was completed in 2010 and is being updated to reflect the needs, vision and values important to the Anahola homestead community.

### DHHL Planning System:



### Purpose of the Regional Plan:

- To directly involve the homestead community in planning for their region.
- To identify projects and priority projects that are important to the homestead community.
- To identify potential resources (such as partners and funding sources) for implementing priority projects.

### Project Timeline

**August - September 2021**

Background Research  
Homestead Leadership Meeting

**January - April 2022**

Draft Plan Development

**May - June 2022**

Final Plan Development



**October 2021 - May 2022**

**Community Meetings**

Issue/Opportunities, Community Vision, Priority Projects,  
Draft Plan Review

**July 2022**

Present Final Plan  
to Hawaiian Homes  
Commission for Approval

**For more information, please contact:**



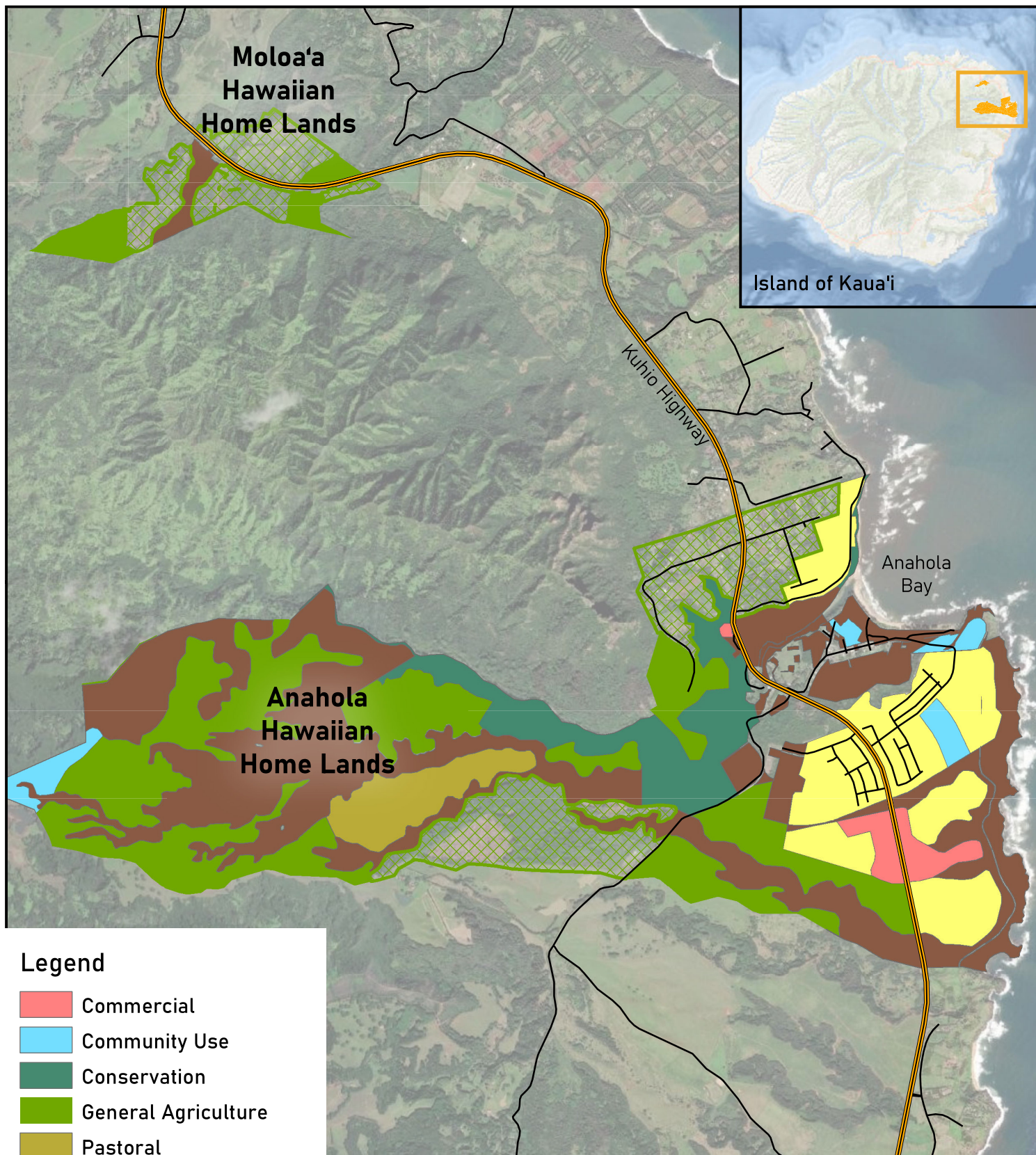
**Nancy McPherson, Project Manager**

DHHL Planning Office  
Phone: (808) 620-9519  
Email: [nancy.m.mcpherson@hawaii.gov](mailto:nancy.m.mcpherson@hawaii.gov)

**SSFM**  
International

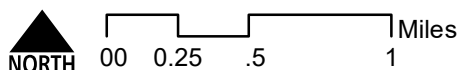
**Malachi Krishok, Planner**

SSFM International, Inc.  
Phone: (808) 356-1272  
Email: [mkrishok@ssfm.com](mailto:mkrishok@ssfm.com)



## Legend

- Commercial
- Community Use
- Conservation
- General Agriculture
- Pastoral
- Residential
- Special District
- Subsistence Agriculture



*This graphic has been prepared for general planning purposes only*

## Anahola Regional Plan Update Planning Area

Department of Hawaiian Home Lands

