

DAVID Y. IGE  
GOVERNOR  
STATE OF HAWAII

JOSH GREEN  
LT. GOVERNOR  
STATE OF HAWAII



WILLIAM J. AILA, JR.  
CHAIRMAN  
HAWAIIAN HOMES COMMISSION

TYLER I. GOMES  
DEPUTY TO THE CHAIRMAN

STATE OF HAWAII  
DEPARTMENT OF HAWAIIAN HOME LANDS

P. O. BOX 1879  
HONOLULU, HAWAII 96805

February 10, 2022

Aloha DHHL Anahola Beneficiary,

The Department of Hawaiian Home Lands (DHHL) is pleased to invite you and your 'ohana to participate in the second community meeting to update the 2010 DHHL Anahola Regional Plan. We are inviting DHHL beneficiaries to participate in this planning process, which includes a series of community meetings. These meetings are opportunities for you to present your ideas on ways to better the Anahola community and work with others in the community to plan implementation actions. For those new to the regional plan process, included in this letter are a project fact sheet and a list of updates on the priority projects included in the last Regional Plan.

Anahola Regional Plan Update – Community Meeting #2  
**Thursday, February 24, 2022**  
**6:00 PM – 8:00 PM**  
**Anahola Clubhouse**  
**3900 Kawelo St.**

*Due to the on-going COVID-19 pandemic, in order to hold this meeting in-person, we are requiring proof of vaccination or a negative COVID-19 test within 24 hours of the meeting.*

The Regional Plan is a community-driven plan. We gathered a lot of information and heard your feedback from our first meeting – the meeting summary is available on the project website: <https://dhhl.hawaii.gov/po/kaui/anahola-regional-plan-update-2021-2022/>. Many asked about the status of the priority projects in the previous Regional Plan. With this letter, we've enclosed updates on each of the projects, and will also spend time providing updates on these and other community projects during this upcoming community meeting.

During the first meeting, we also discussed issues and opportunities and beneficiaries shared their vision for Anahola looking ahead. In this next meeting, we will review what was said together, check if we missed anything, and add new items if necessary. Lastly, we will brainstorm a list of projects together that can address the issues and concerns shared, while supporting the overall vision for Anahola.

We look forward to seeing you at Community Meeting #2 on February 24<sup>th</sup> and continuing our work together to make this Regional Plan reflective of the community's vision and achievable for community members and beneficiary-serving organizations.

If you have any questions, please contact Ms. Nancy McPherson in the Planning Office by phone at (808) 620-9519 or by email at [Nancy.M.McPherson@hawaii.gov](mailto:Nancy.M.McPherson@hawaii.gov).

Aloha,

A handwritten signature in black ink, appearing to read 'W. Aila, Jr.', with a stylized, flowing script.

William J. Aila, Jr., Chairman  
Hawaiian Homes Commission

Enclosures



HAWAIIAN HOME LANDS  
HAWAIIAN HOMES COMMISSION  
DEPARTMENT OF HAWAIIAN HOME LANDS

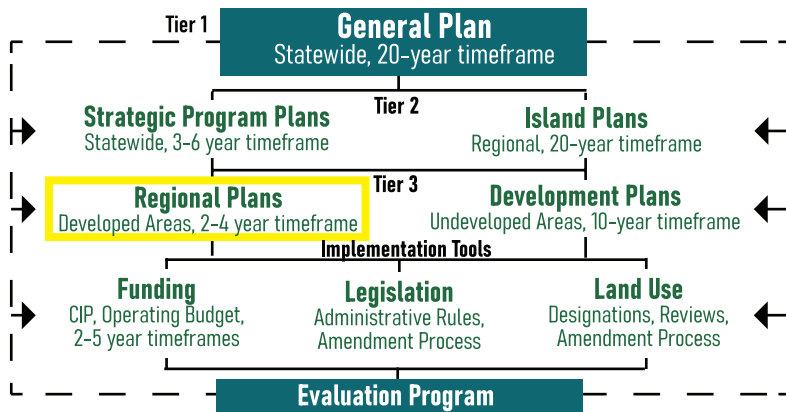
# ANAHOLA

## Regional Plan Update

The Anahola Regional Plan is one of twenty-two regional plans the Department of Hawaiian Home Lands (DHHL) has developed statewide. DHHL Regional Plans allow homestead lessees to identify and solve their own issues and concerns. With support from DHHL and other partners, the planning process and resulting updated Regional Plan are intended to stimulate capacity-building, and to encourage stakeholders to champion the projects that will help to better their community.

The existing Anahola Regional plan was completed in 2010 and is being updated to reflect the needs, vision and values important to the Anahola homestead community.

### DHHL Planning System:



### Purpose of the Regional Plan:

- To directly involve the homestead community in planning for their region.
- To identify projects and priorities that are important to the homestead community.
- To identify potential resources (such as partners and funding sources) for implementing priority projects.

### Project Schedule

*SUBJECT TO CHANGE*

#### August - September 2021

Background Research  
Homestead Leadership Meeting

#### March - August 2022

Draft Plan Development

#### September - October 2022

Final Plan Development



#### December 2021 - August 2022

##### Community Meetings

Issue/Opportunities, Community Vision, Priority Projects,  
Draft Plan Review

#### November 2022

Present Final Plan  
to Hawaiian Homes  
Commission for Approval

### For more information, please contact:



#### Nancy McPherson, Project Manager

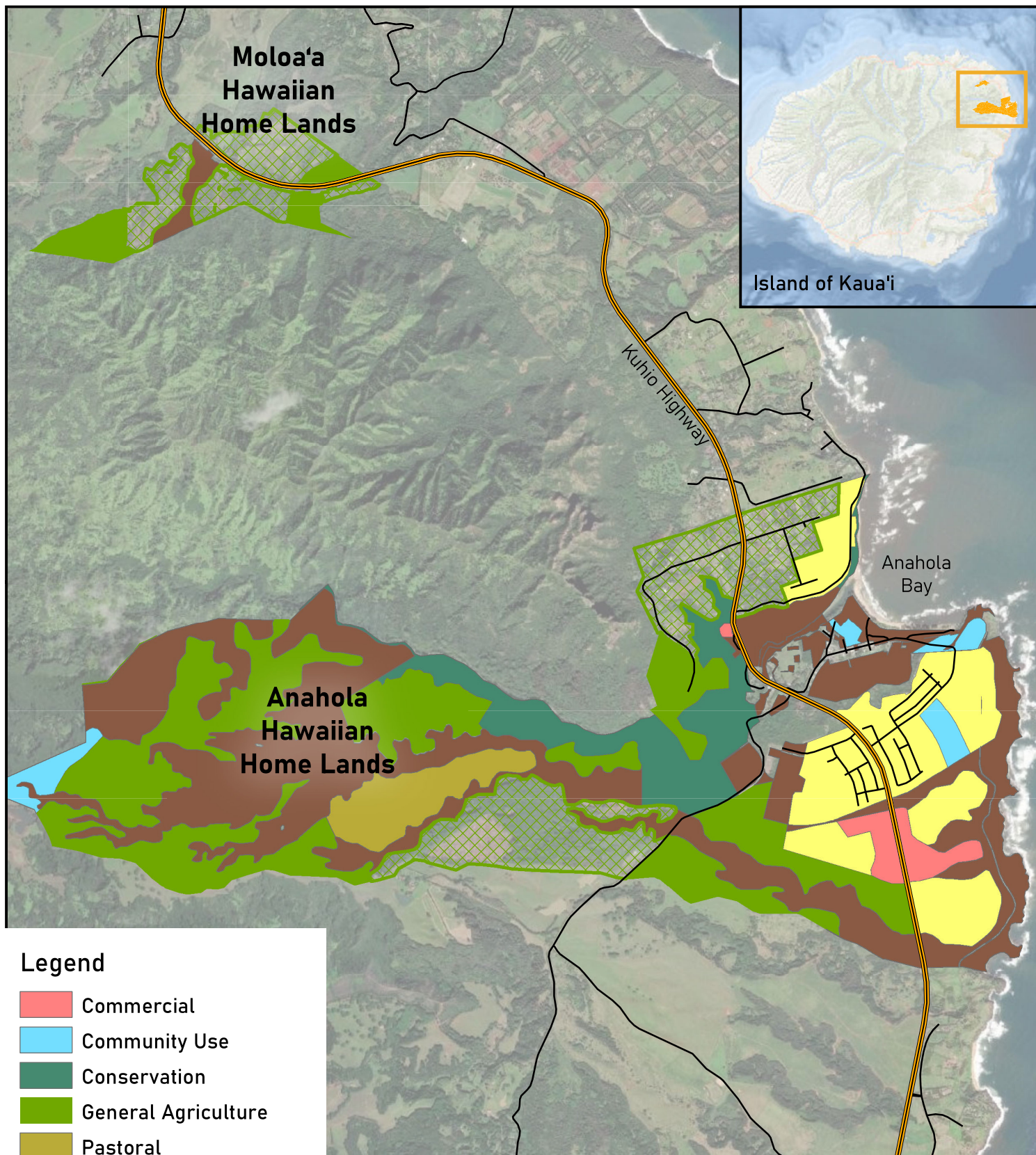
DHHL Planning Office  
Phone: (808) 620-9519  
Email: nancy.m.mcpherson@hawaii.gov



#### Malachi Krishok, Planner

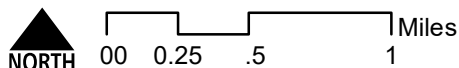
SSFM International, Inc.  
Phone: (808) 356-1272  
Email: mkrishok@ssfm.com





## Legend

- Commercial
- Community Use
- Conservation
- General Agriculture
- Pastoral
- Residential
- Special District
- Subsistence Agriculture



*This graphic has been prepared for general planning purposes only*

## Anahola Regional Plan Update Planning Area

Department of Hawaiian Home Lands



## 2010 Anahola Regional Plan Priority Project Updates

Priority Project	Description in 2010 Regional Plan	Current Status
Ke Aloha O Kō Kākou 'Āina - Anahola Town Center Plan (ATCP)	<p>In 2009, the Anahola community created the Anahola Town Center Community-Based Conceptual Land Use Plan for 194 acres along Kūhiō Highway next to the existing DHHL Anahola homestead subdivision. The priority plan elements identified were:</p> <ol style="list-style-type: none"> <li>1. Develop organizational capacity of community based management team. Identify next steps to ensure plan implementation, including attention to phasing of bike path to Anahola;</li> <li>2. Seek funding with Anahola Hawaiian Homestead Association for community commercial kitchen;</li> <li>3. Pursue lease agreements with DHHL and other authorities to establish cemetery as identified in Anahola Town Center Plan</li> </ol>	<p>Commercial kitchen constructed. Cemetery/secure resting place for iwi kupuna not yet implemented. Anahola Town Center Plan &amp; implementation strategy need to be revisited &amp; Kaua'i Island Plan Land Use Designations need to be amended.</p>
Anahola Clubhouse & Park Improvements	<p>Improvements are needed at Club House &amp; Community Park to ensure safety &amp; continued use of resources. General building improvements and upgrades needed are:</p> <ol style="list-style-type: none"> <li>1. motion sensor lights to increase visibility in the evenings &amp; provide additional security;</li> <li>2. Commercial Kitchen feasibility study;</li> <li>3. upgrades to existing kitchen, restroom &amp; computer room;</li> <li>4. Improved maintenance of playground &amp; basketball court;</li> <li>5. Expansion of baseball field to support little league tournaments</li> </ol>	<p>In 2018-19, County of Kaua'i completed various park improvement projects that included:</p> <ul style="list-style-type: none"> <li>- Complete basketball court renovation</li> <li>- Parking lot paving &amp; striping</li> <li>- Complete playground renovation</li> <li>- Construction of ADA walkways that connect Club House with baseball &amp; basketball amenities</li> <li>- Baseball field improvements: new fencing, new ADA walkways, new dugouts, concrete pads for bleachers, concrete pad for announcers' booth, &amp; reworking of infield dirt &amp; outfield grass</li> </ul> <p>Additional park projects are on hold due to budget constraints.</p>

## 2010 Anahola Regional Plan Priority Project Updates

Priority Project	Description in 2010 Regional Plan	Current Status
Secure & Manage Surface Water Resources (non-potable)	Surface water resources from Kealia watershed through Anahola are an asset and community would like to better understand current conditions for safety & potential future uses. This includes water that runs from the Upper Anahola Ditch to Kaneha Ditch, to Kaneha Reservoirs 1, 2, & 3. Research is also needed for waters that flow in Lower Anahola Ditch, through Kaupaku, Ka'alula & Kamalomalo'o Streams & Anahola River to shores of Anahola.	<p>In 2016 DHHL received notice of \$3 million funding from USDA Rural Development to match DHHL's \$3.8 million contribution for a total of \$6.8 million. Funds are being used for major capital improvements to DHHL Anahola Farm Lots Public (drinking) Water System (PWS #432).</p> <p>Surface water resources were reevaluated in response to beneficiary feedback during the Anahola Kuleana Homestead Settlement Plan process. Additional engineering &amp; design work will need to be done to improve availability of surface water.</p>
Support Kanuikapono 21 <sup>st</sup> Century Ahupua'a Place Based Labs	Kanuikapono is a charter school in Anahola offering 21 <sup>st</sup> Century Ahupua'a curriculum which integrates resource management of natural and cultural resources within the ahupua'a. The school had two priority projects: [1] construction of a new Learning Resource Center, to be located on DHHL land adjacent to the Pi'ilani Mai Ke Kai subdivision; [2] establish mobile educational place-based learning labs throughout the ahupua'a of Anahola.	Funding needed for construction of Learning Resource Center. DHHL to work with Anahola community to identify locations for educational learning labs in Anahola. Will be revisited when discussing Anahola Town Center Plan during Anahola Regional Plan Update.
Improve Road & Traffic Circulation to Kūhiō Highway	This project seeks to improve roadway connectivity in Anahola by increasing direct access to Kūhiō Highway. The purpose of these improvements is to support future commercial & residential activities in Anahola such as Pi'ilani Mai Ke Kai & Anahola Town Center. Kūhiō Highway, a two-lane road, is the primary vehicular transportation arterial through Anahola and is managed by State Department of Transportation-Highways. Future commercial activities located along Kūhiō Highway would also benefit from more direct access to Kūhiō Highway.	Discussions with State Department of Transportation-Highways and County of Kaua'i are ongoing. State DOT-Highways will be resurfacing, restriping and installing rumble bars for the Anahola section of Kūhiō Highway in 2022.