



# Kapolei Community Development Corporation

*KCDC was founded in 2008 and is a 501(c)(3)  
non-profit organization that serves the homesteads  
in the Kapolei region*

# Non-Paid Volunteers from the homestead



**Michelle  
Kauhane**  
Vice  
President  
*Kaupe'a*



**Chantal  
Keli'iho'omalu**  
Director  
*Kānehili*



**Kimo  
Palakiko**  
Director  
*Ahahui 'o  
Ka'uluokaha'i  
Designate*



**PeeWee  
Ryan**  
Secretary  
*Kānehili*



**Alika  
Kea**  
Director  
*Kānehili  
Community  
Association  
Designate*



**Lea  
Arce-Enoka**  
Director  
*Ka'uluokaha'i*



**Scott  
Abrigo**  
President  
*Malu'ohai*



**Leonani  
Puailihau**  
Treasurer  
*Malu'ohai*



**Homelani  
Schaedel**  
Director  
*Malu'ohai  
Residents'  
Association  
Designate*



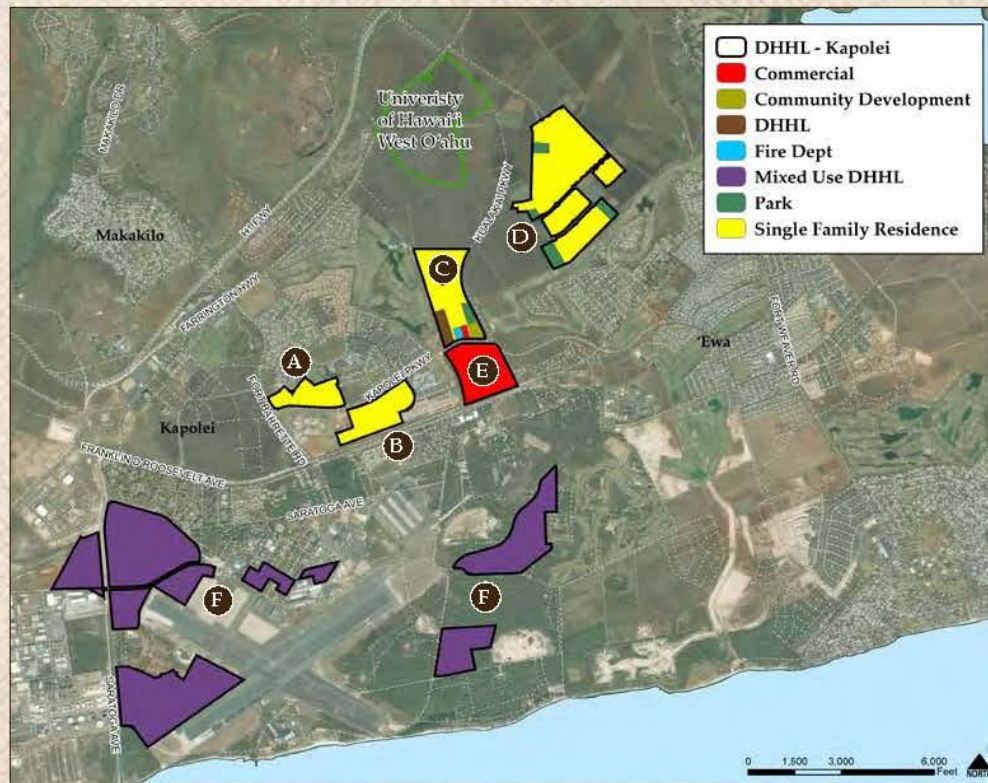
**Daniel  
Luke**  
Director  
*Kaupe'a  
Homestead  
Association  
Designate*

- KCDC's mission is to foster family and cultural preservation founded in the tenets of Community, Culture, Education & Partnerships
- KCDC serves the homesteads of Malu'ōhai, Kaupe'a, Kānehili and Kauluokaha'i
  - 1,085 Homesteads &  $\pm 4,500$  Native Hawaiians
  - Full Build out -  $\pm 2,000$  Homesteads &  $\pm 9,000$  Native Hawaiians





# Hawaiian Home Lands



## DHHL Owned Parcels

### A. Malu'ohai Village 6

Malu'ohai is a 38 acre subdivision within the Villages of Kapolei. 111 single-family homes, 80 single-family rentals, and 35 self-help homes have been constructed.

### B. Kaupe'a Village 8

Kaupe'a is a 52 acre subdivision within the Villages of Kapolei. 326 lots will be available with a average lot sizes of 5,000 square feet. Houses completed in 2008.

### C. Kanehili East Kapolei I (TMK 9-1-151, 152, 153)

Infrastructure completed January 2010. House construction by Centry Homes started in February 2009. As of August 2010, 210 houses have been occupied.

### D. East Kapolei II (TMK 9-1-17: 110)

Majority has been conveyed from DLNR via quitclaim deed. Other uses include two schools, Kroc Community Center and Special Olympics.

### E. East Kapolei Commercial (TMK 9116108 - por)

East Kapolei Commercial is a 67 acre parcel located makai of East Kapolei I. 1.5 million square feet of retail/commercial space for a regional shopping center is planned.

### F. Kalaheo

Lands in Kalaheo are not intended for residential homestead use due to the abundance of land in Kanehili and Kapolei II for residential development and lack of infrastructure. Land parcels are intended for revenue generation.

## Land Summary

	Acres	Housing Units
A. Malu'ohai Village 6	38	326
B. Kaupe'a Village 8	56	226
C. Kanehili East Kapolei I	68	403
D. East Kapolei	213	1,457
E. East Kapolei Commercial	67	-
F. Kalaheo	555	-
<b>TOTAL</b>	<b>997</b>	<b>2,412</b>



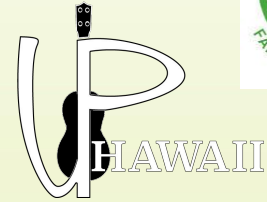


# Our Progress



# KCDC Programs & Initiatives

- **Kupuna** program with Alu Like
- **Keiki and Parent** program with Keiki O Ka 'Āina
- **Free Ukulele Classes** with Ukulele Project Hawaii
- **Honouliuli Educational Fair** with KS
- **Hāpai Pōhaku Scholarship** with HCF
- **Homestead Health Survey** with Kula



# Hāpai Pōhaku Scholarship Fund

- Four (4) **\$2,000** scholarships per year
  - One scholarship per homestead
- Funded by an endowment and KCDC
- For Kapolei homestead residents pursuing higher education
- In perpetuity (forever)





# Kapolei Homestead Health Survey

- Conducted in the fall of 2019
- Partnered with Kula no na Po'e Hawai'i (Papakolea)
- Understand the issues to the health and well-being of our homesteaders
- Guide and inform programs to meet homestead health needs
- Train Community Health Workers



*2020 Community Report*

*Kapolei Homestead Health Survey*



# Covid Response

- Partnered with KS, KROC Center Hawaii, Alu Like, CNHA, HCF, USDA, Longs Drugs, Innergex, KZ
- 38,000 Meals Distributed
- 1,100 Covid Kits Distributed
- Raised \$15,000
- 500 USDA Boxes of Food



# Covid Response

- Partnered with DHHL, DOH, Queens, Project Vision and others
- Distributed 4,000+ Free Covid Test Kits to Homesteaders
- Canvassed Homesteads - Sharing Vaccination/Booster/Testing Info.
- Six Vaccination/Booster/Testing Events at DHHL's Hale Pono'i





# Homestead Holidays

- Thanksgiving Distributions - 800+ Turkeys and \$10k in Gift Cards
- Partnered with KROC Center Hawaii
- Distributed hundreds of free toys and home items to keiki and Ohana in the homesteads during Christmas



# Looking Ahead





Kapolei  
Heritage  
Center  
22,650 SF

DHHL

Kealahou St

Kinoiki St

Kamokuiki St

Kānehili

Kekahili St

Kualaka'i Parkway

HFD

Ho'omaka  
Marketplace  
4.992 AC

Kapolei Parkway

Ka Makana Ali'i





# Kapolei Heritage Center - Phase 1

- Constructed, managed and operated by KCDC
- KCDC's conduit to serving the Kapolei Homestead Region
- 2 Classrooms
- Certified Kitchen
- Online booking



# Proposed Phase 2 - Hālau

- 350+ People Capacity
- Flex space (1 large space or 3 smaller spaces)
- Build parking lot
- Accommodate large events
- Double space at center for programs



# Ho'omaka Marketplace

- Ho'omaka means “To Begin”
- KCDC and Kapolei Homestead led project
- Subleased to KZ Companies
  - Lease rent supports KCDC/Homesteads
  - 20% to DHHL
- Neighborhood Commercial Center

**HO'OMAKA**  
MARKETPLACE





# Ho'omaka Marketplace

- Tenants
  - Longs Drugs
  - Hele Gas & 7/11
  - Chick-fil-A
- Container Park
- 1,200 Sq. Ft. KCDC Homestead Business Incubator

HO'OMAKA  
MARKETPLACE



# Ho'omaka Marketplace

HO'OMAKA  
MARKETPLACE

- Challenges
  - Pandemic
  - DOT
- Ho'omaka will provide KCDC and the homesteads in Kapolei with the resources for a sustainable future





Kapolei  
Community  
Development  
Corporation