

Anahola Regional Plan Update

Project Planning Resources & Examples

DHHL Anahola Regional Plan Update Website:



<https://dhhl.hawaii.gov/po/kauai/anahola-regional-plan-update-2021-2022/>

Housing Resource Center Examples & Resources

Boston Building Resources Co-op – Boston, MA



Services/Programming:

- Membership based co-op
- Home Building/Repair Workshops
- Tool Rental/Sharpening
- Technical Assistance – design/planning
- Tradesperson referrals
- Re-use Center

<https://www.bostonbuildingresources.com/>

Home Repair Resource Center- Cleveland, OH



Services/Programming:

- Home Repair Classes
- Home Repair Resources
- Tool Library/Rental
- Financial Education & Financial Assistance
- Foreclosure Prevention

<https://hrrc-ch.org/>

Alternative Infrastructure Examples & Resources

Wastewater Alternatives & Innovation (WAI)



Mission:

WAI helps Hawai'i homeowners and communities manage the difficult process of upgrading cesspools and failing septic systems across the state to new systems that are affordable, efficient and better for the environment.

Areas of work:

- Innovative technology
- Securing financial resources
- Policy & advocacy
- Outreach & education
- Pilot projects

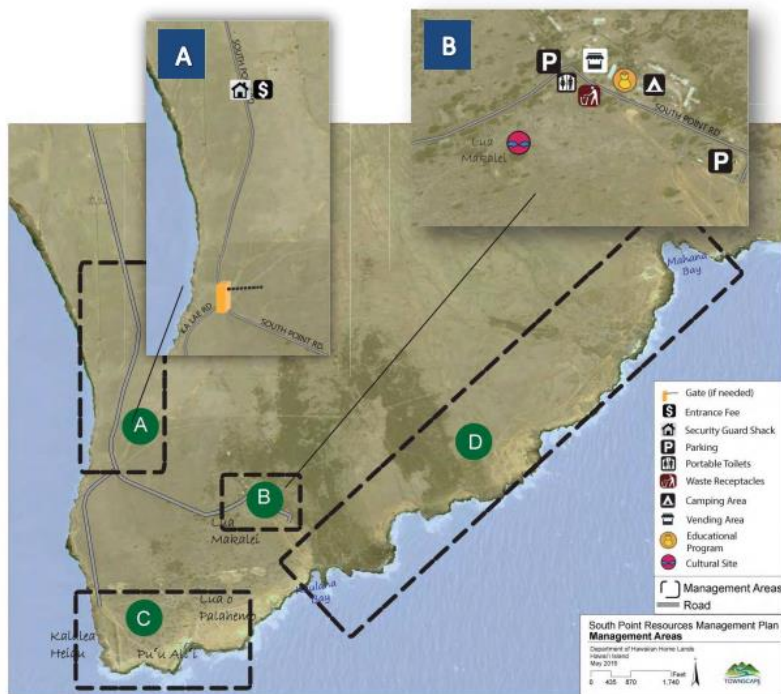
<https://waicleanwater.org/>



Cinderella Incineration Toilet

Shoreline Management Planning Examples & Resources

South Point Resource Management Plan – Hawai'i Island

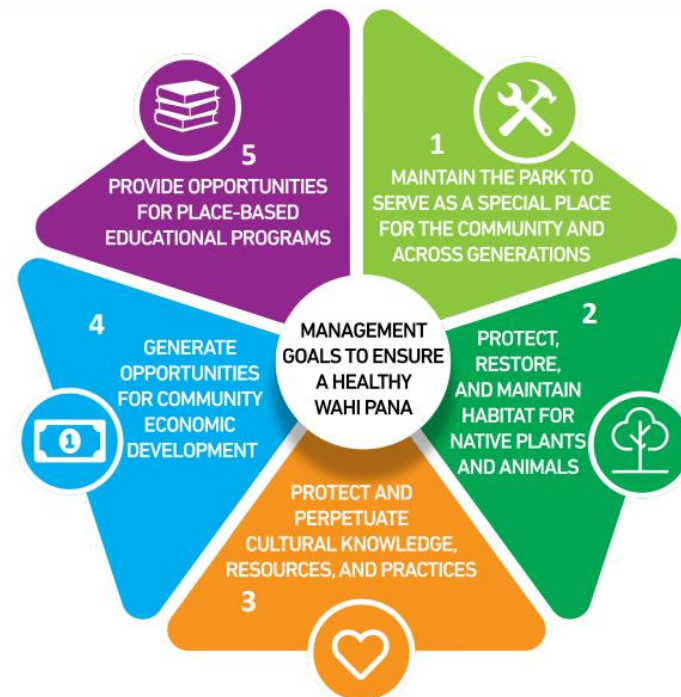


Plan Includes:

- Cultural and natural resources inventory
- Community talk stories and open houses
- Identifies projects and strategies to meet management goals
- Provides estimated costs
- List action steps for DHHL

<https://dhhl.hawaii.gov/po/special-area-plans/south-point/>

Mālama Park Special Area Management Plan – Moloka'i



Plan is currently under development and will:

- Guide issuance of land dispositions for non-homestead uses.
- Identify opportunities to leverage resources and long-term collaborators
- Develop management goals and strategies

<https://dhhl.hawaii.gov/po/special-area-plans/malama-cultural-park/>

Emergency Services & Resilience Center Examples & Resources

Wainiha Community Resilience Center, Kaua'i



Services/Programming:

- Satellite DLNR, KPD, and KFD offices
- Equipment storage garage
- Space for community meetings/gatherings
- Certified kitchen
- Emergency power generation
- Staging area for emergency resource distribution
- Developed by Kaua'i County with long-term management by nonprofit planned

Vibrant Hawai'i Resilience Hub Accelerator – Hawai'i Island



Goal: A network of trusted, people-powered spaces that provide resources to build more connected and prepared communities.

Phased approach:

- Phase 1: Respond to COVID-19 and provide for basic needs
- Phase 2: Economic resilience, disaster preparedness, and recovery
- Phase 3: Formalize network, build on existing capacity, and ready for built infrastructure investment.

<https://www.vibranthawaii.org/hubs>

Youth Education & Trades School Examples & Resources

Kūkulu Kumuhana O Anahola



Programming:

- Community gatherings & movie nights
- Suicide prevention
- Ulupono Community Center and Agricultural Youth Training Center

Ho'ākeolapono Trades Academy



Programming:

- Integrating on-the-job training and utilizing innovative strategies to foster 21st century skills development
- Targeted skills development based on individualized skills plan for students
- Align with Career and Technical Training education standards for 9-12 graders

<http://www.kkoa.org/>

Youth Education & Trades School Examples & Resources

Ma Ka Hana Ka 'Ike - Maui



Programming:

- Building program – in-school, after-school and post-high school apprenticeships
- Farm training and school garden program
- Mālama Hāloa program connecting youth and their 'ohana with traditional Native Hawaiian foods and cultural practices.

<https://www.hanabuild.org/>

YouthBuild– Nationwide (in Honolulu & Waimānalo)



Programming:

- There are over 200 YouthBuild programs across the US with one in Honolulu and one in Waimanalo
- Part of US Dept of Labor Workforce Development Initiative
- Provides youth opportunity to earn GED, learn job skills, and gain confidence to seek life goals.

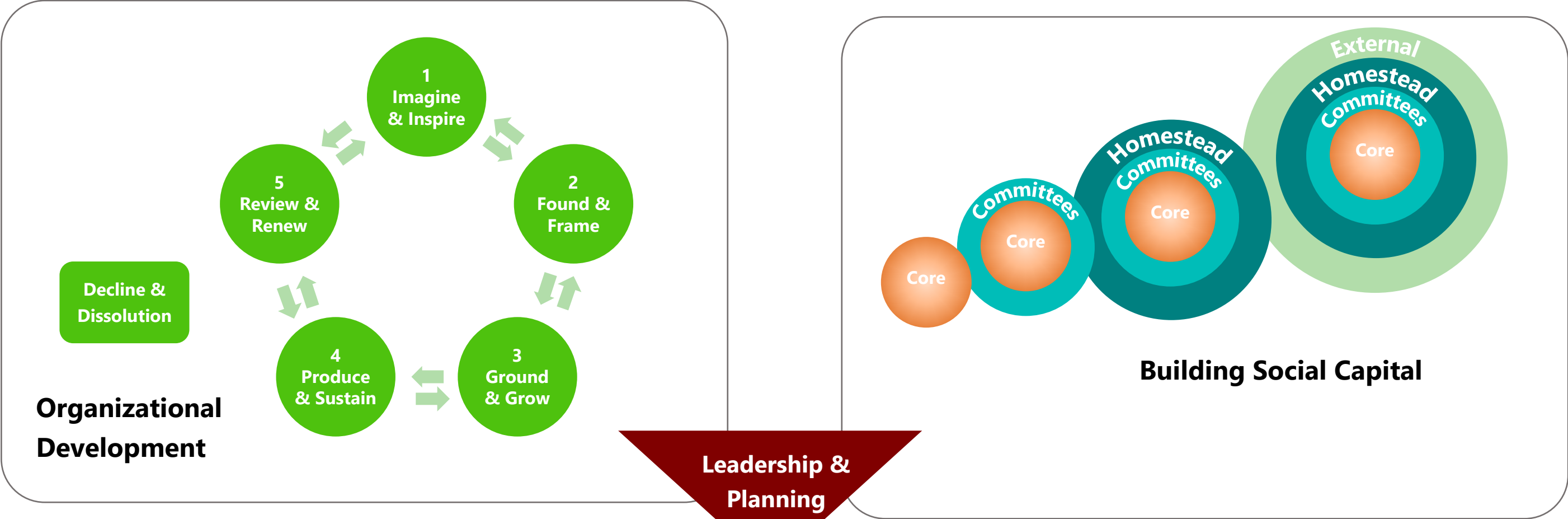
<http://youthbuildhonolulu.org/>

Nānākuli Traffic Calming – O‘ahu



- Raised crosswalks
- New signage and road striping
- Future plans for: bulbouts, speed radars, flashing beacons, new traffic signs, and changes to the bike and parking lanes.

COMMUNITY ORGANIZATION & DEVELOPMENT

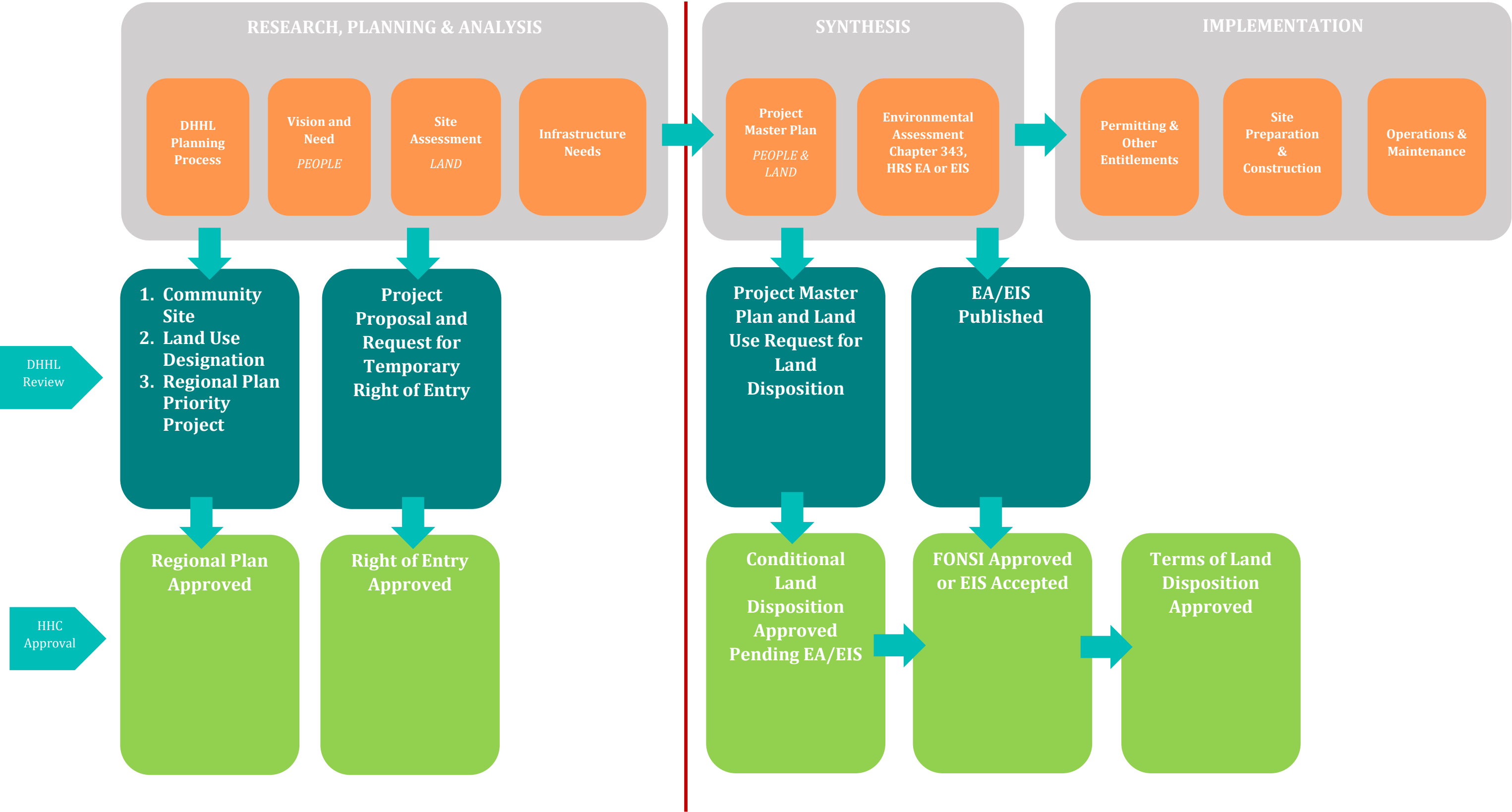


COMMUNITY
VISION



- ✓ All activities are rooted in community vision
- ✓ Good programs/projects build social capital and develop strong organizations
- ✓ Programs/projects should be selected based on community support and organizational capacity

MASTER PLANNING AND LAND DEVELOPMENT PROCESS ON HAWAIIAN HOME LANDS



PRIORITY PROJECTS

	PROJECT	LOCATION	TIMING	COMMUNITY RESOURCES
2010 Priority Projects	1. Ke Aloha O Ko Kākou ‘Āina Anahola Town Center Plan			
	2. Anahola Clubhouse & Park Improvements	Anahola Homestead Park		
	3. Secure & Manage Surface Water Resources (non-potable) (2022 Update: Water Access & Management)			
	4. Support Kanuikapono 21st Century Ahupua‘a Place Based Labs			
	5. Improve Road & Traffic Circulation to Kūhiō Highway (2022 Update: Pedestrian Safety Improvements)			

PRIORITY PROJECTS

	PROJECT	LOCATION	TIMING	COMMUNITY RESOURCES
<i>Housing</i>	-Housing Resource Center & Home Building Cooperative			
<i>Shoreline Access</i>	-Shoreline Management Plan & Program			
<i>Resilience & Emergency Preparedness</i>	-Anahola Emergency Services & Resilience Center			
	-Community Capacity Building Fund			
<i>Youth Education & Trades</i>	-Kūkulu Kumuhana O Anahola			
	-Ho‘ākeolapono Trades Academy			

PRIORITY PROJECTS

	PROJECT	LOCATION	TIMING	COMMUNITY RESOURCES