

Anahola Regional Plan Update

Community Meeting #4

June 6, 2022



HAWAIIAN HOME LANDS
HAWAIIAN HOMES COMMISSION
DEPARTMENT OF HAWAIIAN HOME LANDS

SSFM
International

Team Introductions



DHHL Planning Office Team:

- Andrew Choy (Planning Program Manager)
- Nancy McPherson (Project Manager, Kaua'i Liaison)

DHHL Homestead Kaua'i District Office:

- Erna Kamibayashi
- Rhonda Gadingan

DHHL Land Management Division:

- Kaipo Duncan (Kaua'i Land Agent)



Consultant Team (SSFM International):

- Melissa May (Planner, Principal-in-charge)
- Jared Chang (Planner, Facilitator)
- Malachi Krishok (Planner, Project Manager)

SSFM Experience/Related Projects:

- DHHL General Plan Update (ongoing)
- DHHL Hanapēpē Master Plan & EA (completed 2020)
- County of Kaua'i General Plan (completed 2018)

Tonight's Meeting Objectives

- Share results from Kou Mana'o Questionnaire #3 – Project Prioritization
- Share DHHL land development process
- Discuss implementation action steps for selected priority projects
- Confirm priority projects to move forward into the Draft Regional Plan Update
- Closing & Next Steps

Anahola Regional Plan Update Beneficiary Consultation Schedule



An aerial photograph of a coastal landscape. A winding road or path runs along the edge of a body of water, possibly a bay or a large lake. The land is covered in dense vegetation, appearing in shades of green and brown. The water is a deep blue-grey color. The sky is a pale blue. The overall scene is a natural, undeveloped coastal area.

PRIORITY PROJECT SELECTION

Priority Projects

- Projects identified for the Regional Plan are meant to address the issues and concerns expressed by the community
- Priority projects help DHHH to prioritize its limited resources and help the community to decide where/how to spend time and energy
- Projects that are not selected as priorities can still move forward but would require additional beneficiary consultation

Kou Mana'o Questionnaire #3

- Mailed to all Anahola lessees
- Available to take online or hardcopy
- Twelve project options for beneficiaries to vote on (choose up to 5)

- Mailed to 499 lessees
- Emailed to all who attended previous meetings and provided email address
- **Total of 32 responses received**



Kou Mana'o Questionnaire #3: Anahola Regional Plan Update Priority Project Selection

DHHL Regional Plans allow homestead lessees to identify and solve their own issues and concerns. The existing Anahola Regional Plan was completed in 2010 and is being updated to reflect the region today. As a lessee and homestead resident, your voice holds an important role in developing the vision, creating the plan, and selecting priority projects. Please fill-out the questionnaire to share your thoughts.

Please submit your responses by 6/5/2022.

 mkrishok@ssfm.com (not shared) [Switch account](#)



* Required

Beneficiary Type *

☐ Applicant

☐ Lessee

☐ Both (Applicant & Lessee)

☐ Other: _____

Homestead Community *

Your answer _____

Kou Mana‘o Questionnaire Results

Votes	Project	Draft Description
8	Regional Wastewater Treatment Plant	With cesspool conversions needed by 2050, seek federal funding to develop a wastewater treatment plant to accommodate homes and businesses in Anahola.
8	Improve Pedestrian Safety & Safe Routes	Develop a plan for pedestrian routes and safety measures, particularly around schools and parks.
9	Multi-waste Management Facility	Develop a consolidated transfer station for recycling, trash, and green waste.
10	Implement Anahola Town Center Plan Cemetery	Pursue lease agreements with DHHL and other authorities to establish a cemetery as identified in the Ke Aloha O Ko Kākou ‘Āina - Anahola Town Center Plan.
10	Anahola Emergency Services & Resilience Center	Develop an emergency services and resilience center to provide emergency shelter and serve as a distribution hub for public safety and emergency services in the region.
11	Improve Lease Enforcement	Work with DHHL to better address vacant lots and improve agricultural production on agriculture lots.

Results continued...

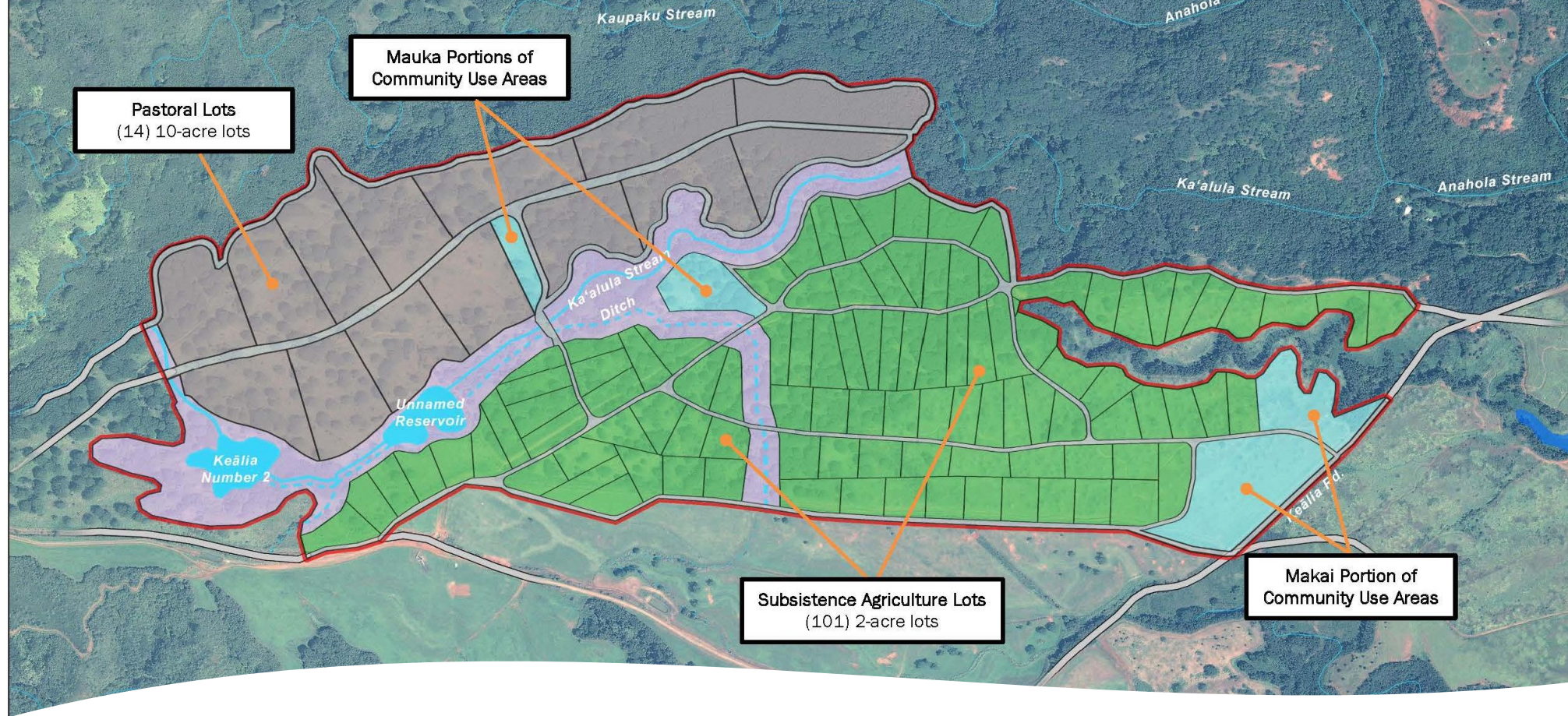
Votes	Project	Draft Description
11	Anahola Clubhouse & Park Improvements	Continue implementing improvements to the Clubhouse and park to ensure safety and continued community use of the resources and space.
13	Support 21 st Century Place Based Labs	Support the development of learning spaces for Hawaiian cultural, place-based learning in partnership with Kanuikapono PCS, Kūkulu Kumuhana O Anahola, and other community-based programs serving Anahola youth.
14	Implement Mauka Farm Lot Plan	Subdivide and issue subsistence agriculture and pastoral awards and work with DHHL to ensure housing and infrastructure alternatives are available to lessees.
17	Secure & Manage Surface Water Resources	Investigate water resources mauka and explore watershed development and stream flow restoration projects to secure homestead water rights.
19	Home Building Cooperative & Resource Center	Develop a home building cooperative and resource center in conjunction with Ho‘akeolapono Trades Academy and Institute that brings together education, building materials, equipment, and skilled labor resources to provide affordable home building, repair and maintenance to the Anahola community.
19	Shoreline Management Plan	Develop a plan to manage shoreline resources and access to DHHL’s lands makai of Kūhiō Highway currently managed by ‘Āina Alliance.

Update: Anahola Kuleana Settlement Plan

COMPLETED WORK

- Anahola Non-Potable Water Infrastructure Study finalized May 2021
- Kuleana Settlement Plan Final EA/FONSI published June 2021

<https://dhhl.hawaii.gov/wp-content/uploads/2021/06/2021-06-23-KA-FEA-Anahola-Kuleana-Homestead-Settlement-Plan-Sized.pdf>



SCHEDULED IMPLEMENTATION

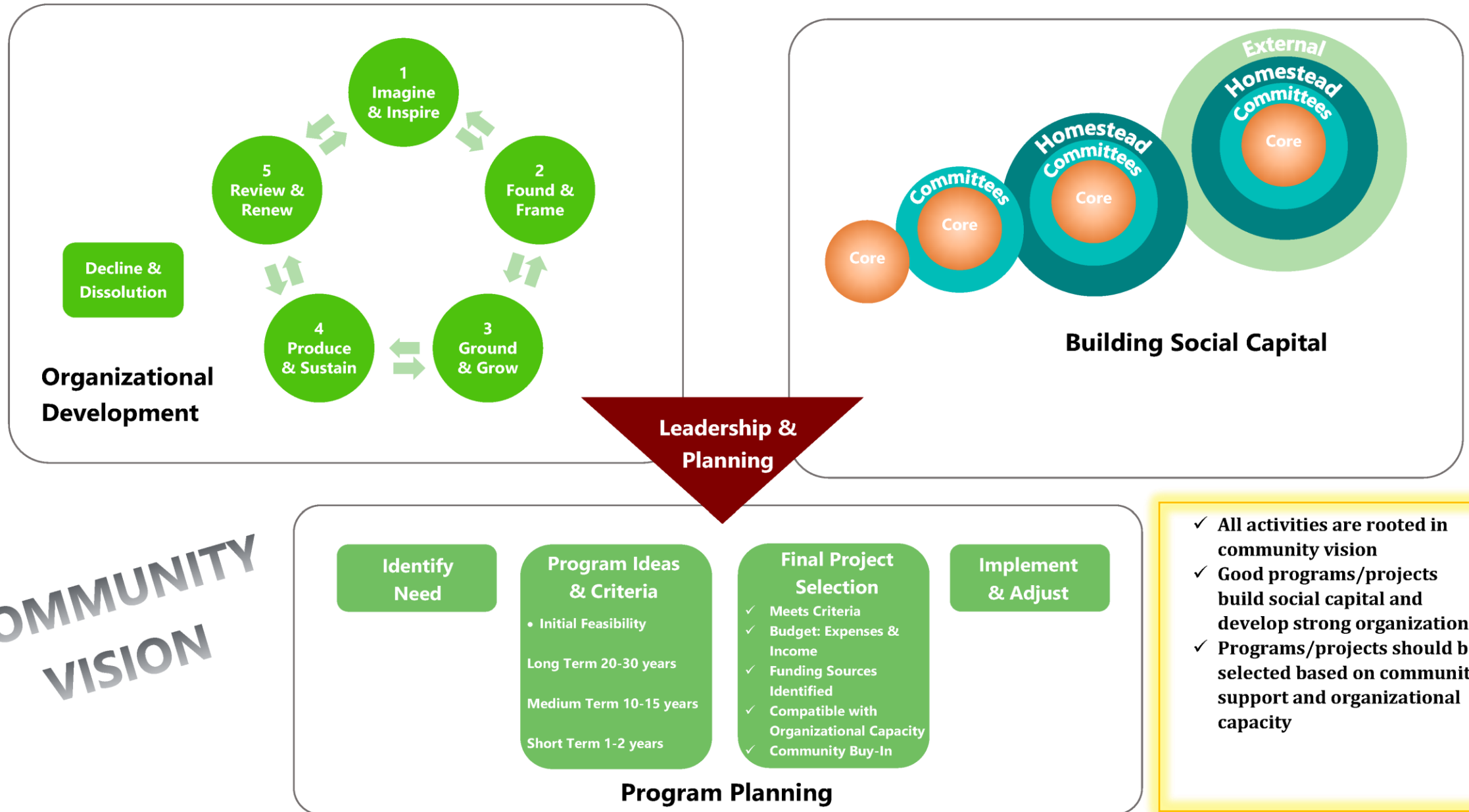
- DHHL's Land Development Division (LDD) has contracted with G70 to survey, generate metes and bounds, stake and map lots and design internal road and drainage improvements; Notice to Proceed (NTP) issued 5/5/2022
- ControlPoint Surveying, Inc. will be subcontracted for survey work, which may include drone flights. Project schedule is still being prepared
- DHHL (LDD and PO) will coordinate with LMD Land Agent Kaipo Duncan and Kaua'i District Office to provide notifications and updates to Anahola lessees and homestead associations prior to commencement of various phases of work

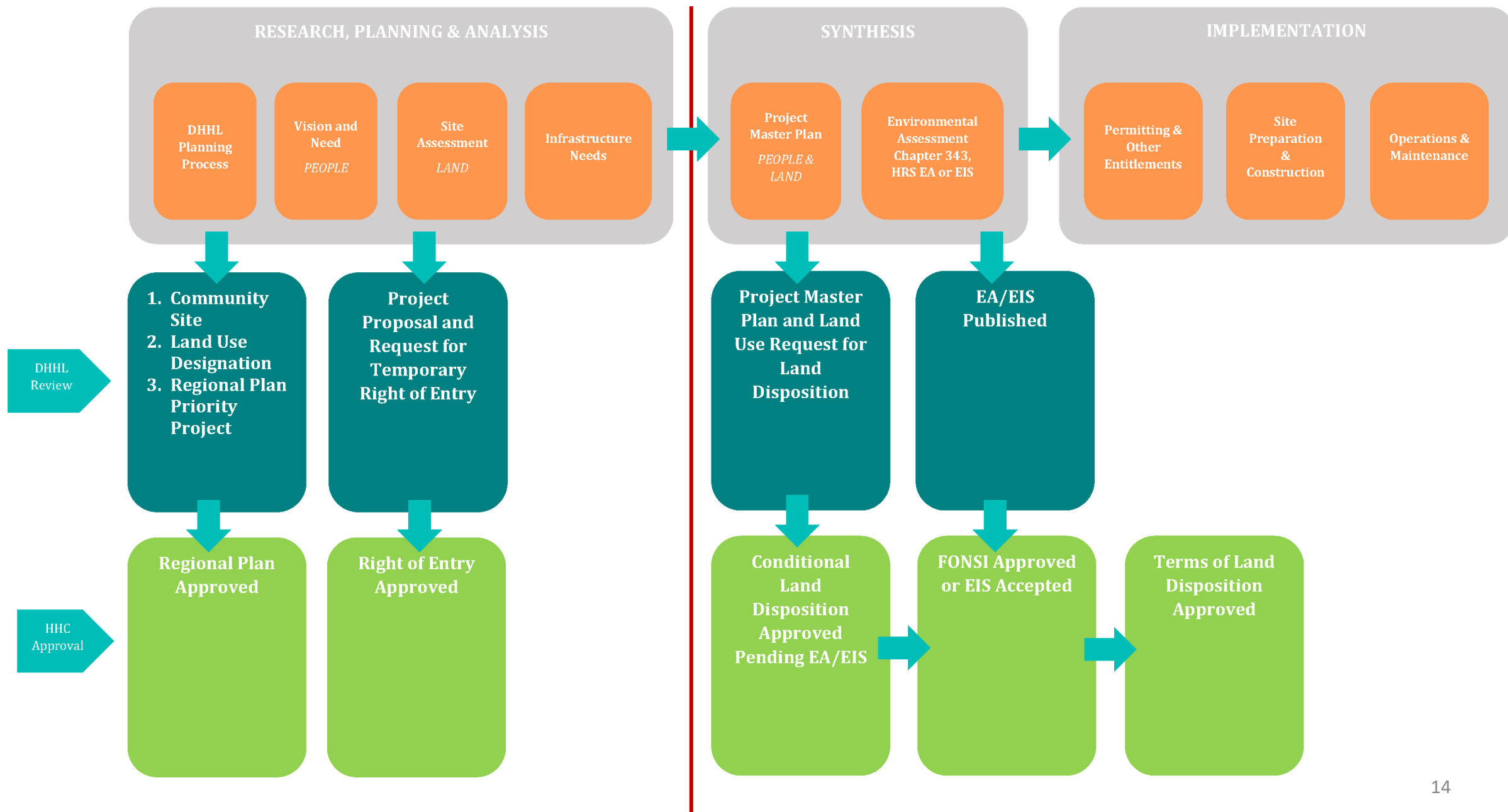


PROJECT IMPLEMENTATION

Credit: Laurel Smith / The Garden Island 12

COMMUNITY ORGANIZATION & DEVELOPMENT





Project Implementation

Research, Planning, & Analysis

- ☐ Is there an organization/entity leading project?
- ☐ How does the project fit vision & needs of community?
- ☐ Has a project location been selected?
- ☐ Has the lead organization/entity requested right-of entry & completed site assessment/ due diligence

Synthesis

- ☐ Does the project require a master plan?
- ☐ Does the project require a business plan?
- ☐ Does the project require an Environmental Assessment?
- ☐ Has the lead organization/entity requested lease/license?

Implementation

- ☐ What permits & other entitlements are necessary?
- ☐ When will site preparation & construction begin? Be complete?
- ☐ What are the ongoing operations & maintenance needs?



WRAP-UP & NEXT STEPS

What's Next?

- Project team will prepare Draft Regional Plan
- Follow-up and gather additional info from project POC, potential partners, and DHHL staff
- HHC on Kaua'i and Community Meeting – August 2022
- Draft Regional Plan Community Meeting – September 2022
- Final Draft Regional Plan for HHC approval – November 2022

Please feel free to contact us:



Nancy McPherson, Planner

nancy.m.mcpherson@hawaii.gov

(808) 620-9519



Malachi Krishok, Planner

mkrishok@ssfm.com

(808) 356-1272

IF YOU OR SOMEONE IN YOUR HOUSEHOLD HAS TESTED POSITIVE FOR COVID-19 OR HAVE SYMPTOMS OF COVID-19 WITHIN 2 DAYS OF THIS MEETING PLEASE CONTACT US.

THIS WILL HELP WITH CONTACT TRACING AND HELP SLOW THE SPREAD OF COVID-19 IN THE COMMUNITY.