



Update on DHHL Water Reservations Related to East Maui

HHC Central Maui Community Meeting – 6:30 p.m.

ʻĪao Intermediate School

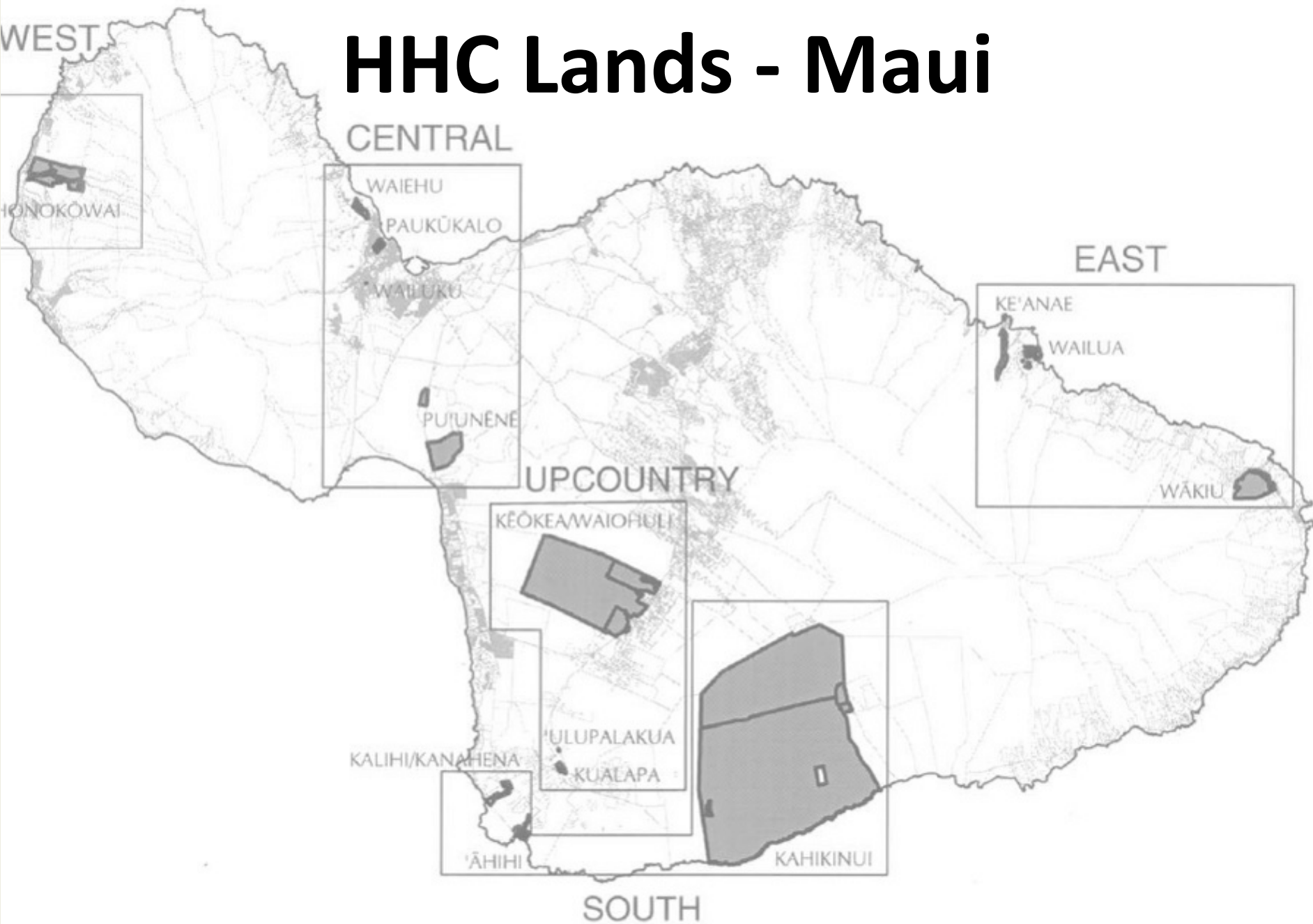
Dr. Jonathan Likeke Scheuer for the Planning Office

November 21, 2022

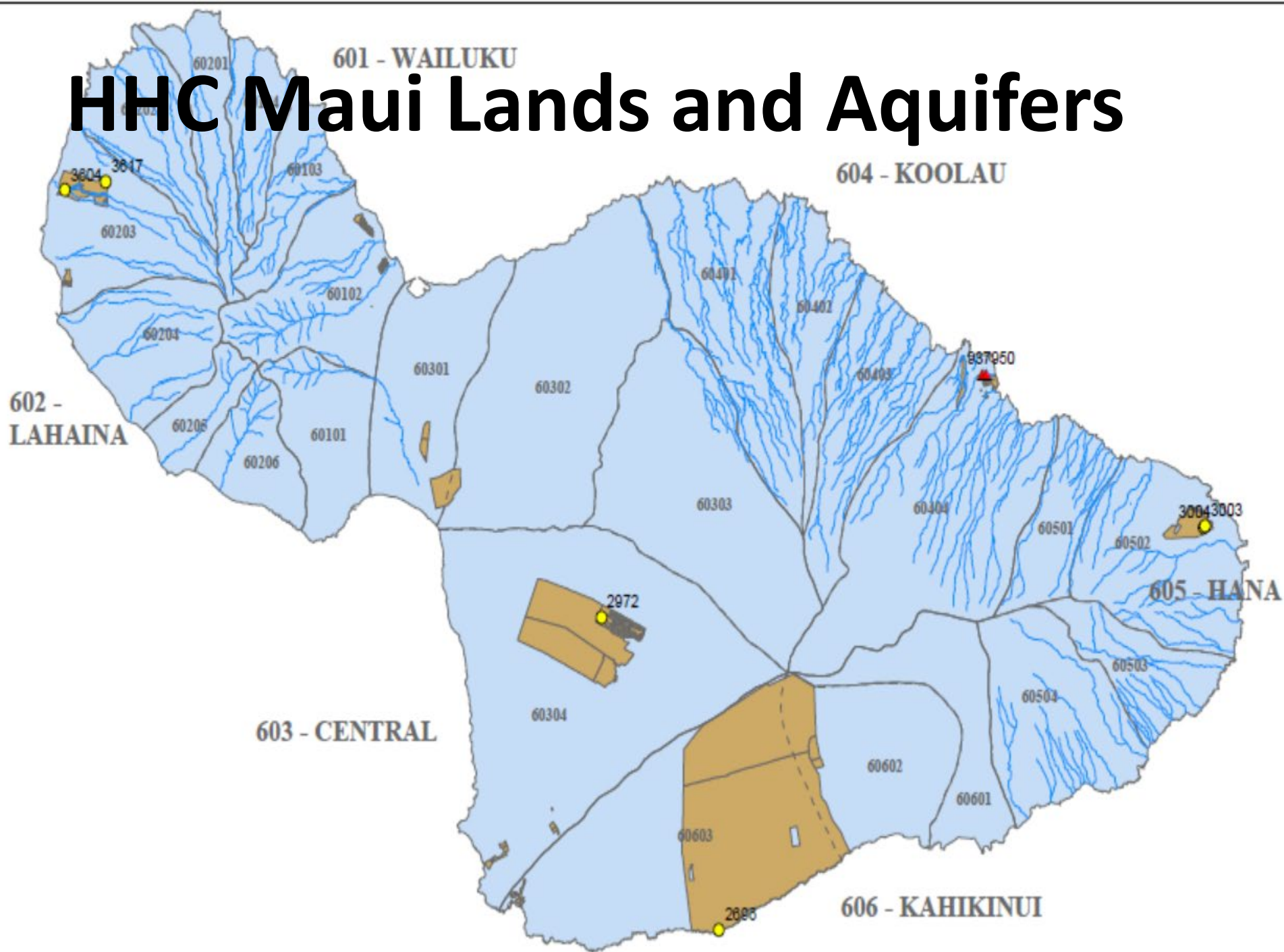
Outline

- **Water Reservations**
- **E Maui Water Lease**
- **DHHL / HHC Reservation Request**
- **CWRM action last week (Nov 15)**
- **Next steps**

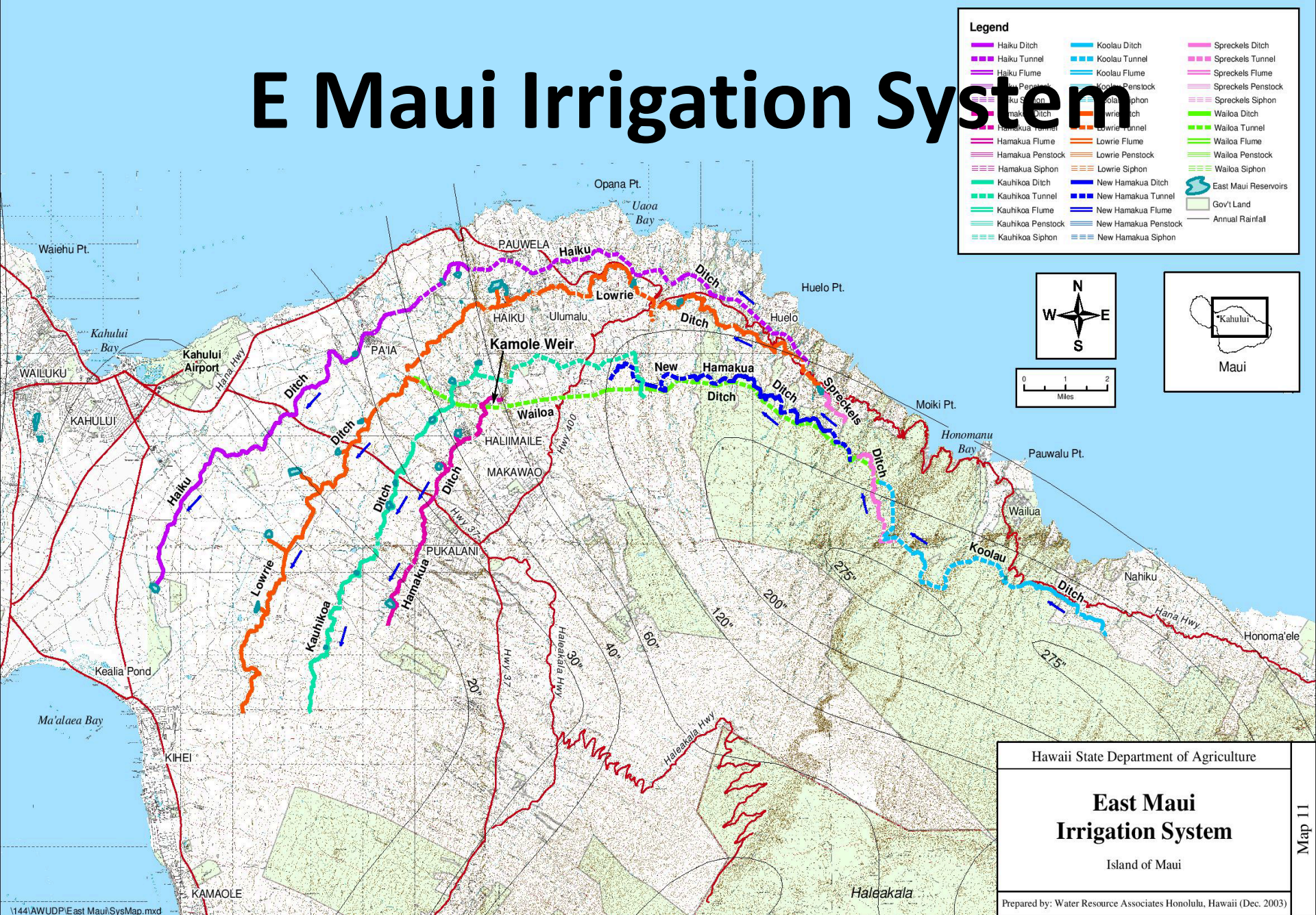
HHC Lands - Maui



HHC Maui Lands and Aquifers



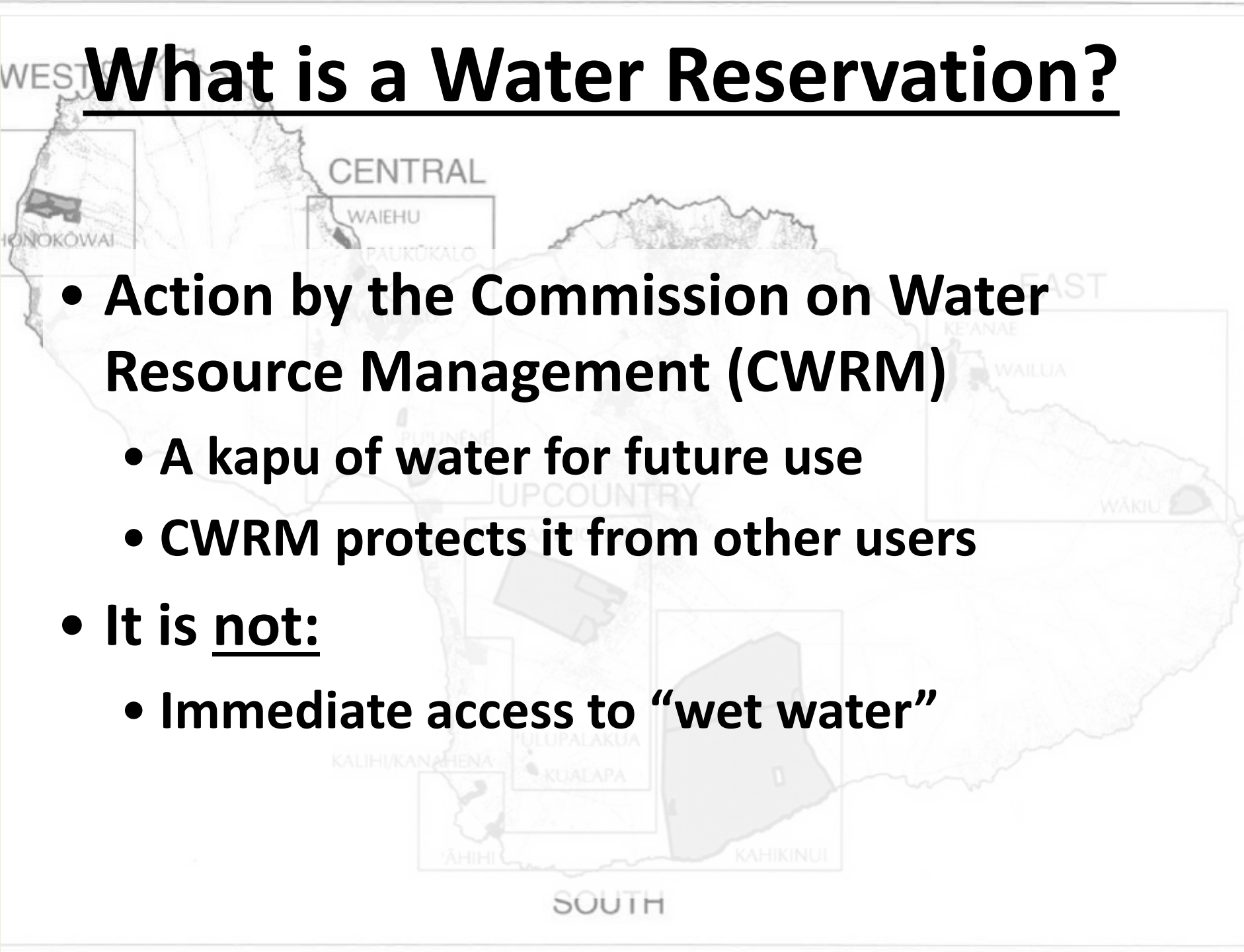
E Maui Irrigation System



Map from Hawai'i Dept of Agriculture

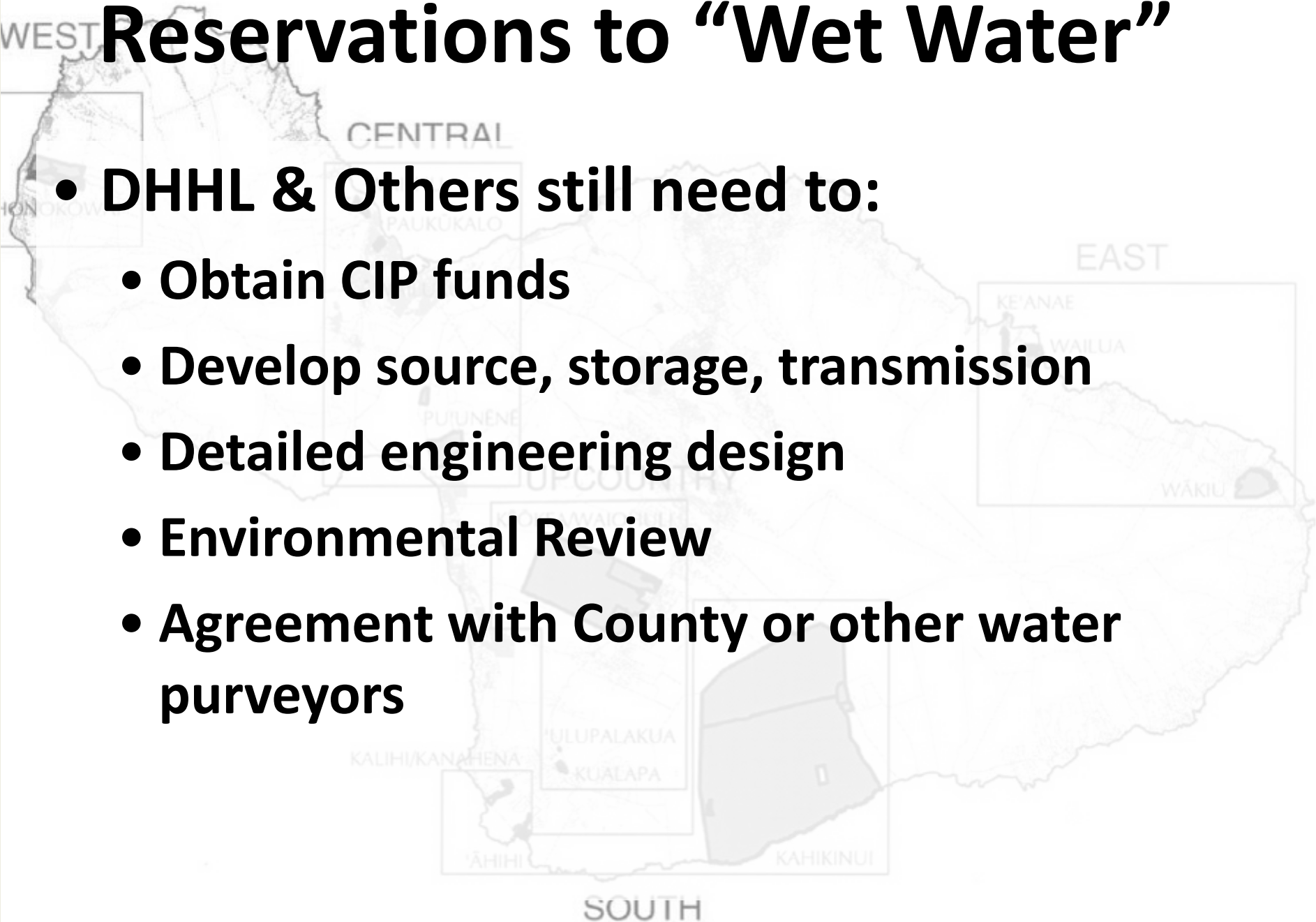
What is a Water Reservation?

- **Action by the Commission on Water Resource Management (CWRM)**
 - A kapu of water for future use
 - CWRM protects it from other users
- It is not:
 - Immediate access to “wet water”



Reservations to “Wet Water”

- **DHHL & Others still need to:**
 - Obtain CIP funds
 - Develop source, storage, transmission
 - Detailed engineering design
 - Environmental Review
 - Agreement with County or other water purveyors



Why Reservations?

- **Legislature amended the Water Code and other laws in 1990**
- **Acknowledged it takes years for DHHL to develop lands**
- **Recognized by that time available water / less expensive sources were already developed for others**

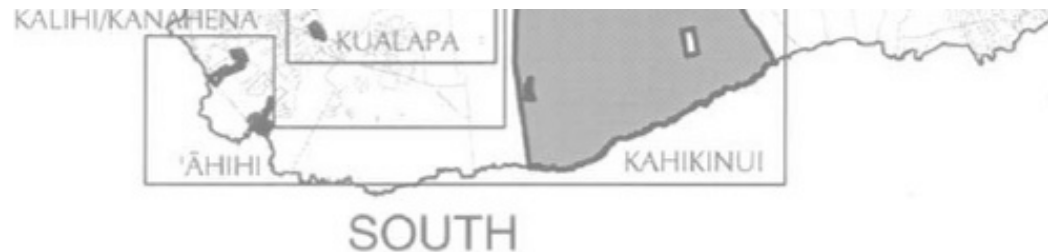
Not a New Problem!

Honolulu Record, Volume 10 No. 19, Thursday, December 5, 1957 p. 1

[back](#)

Hawaiians Kept Off Land By Suburban Water Stall; System Supplies Subdivides, but Not Homesteads

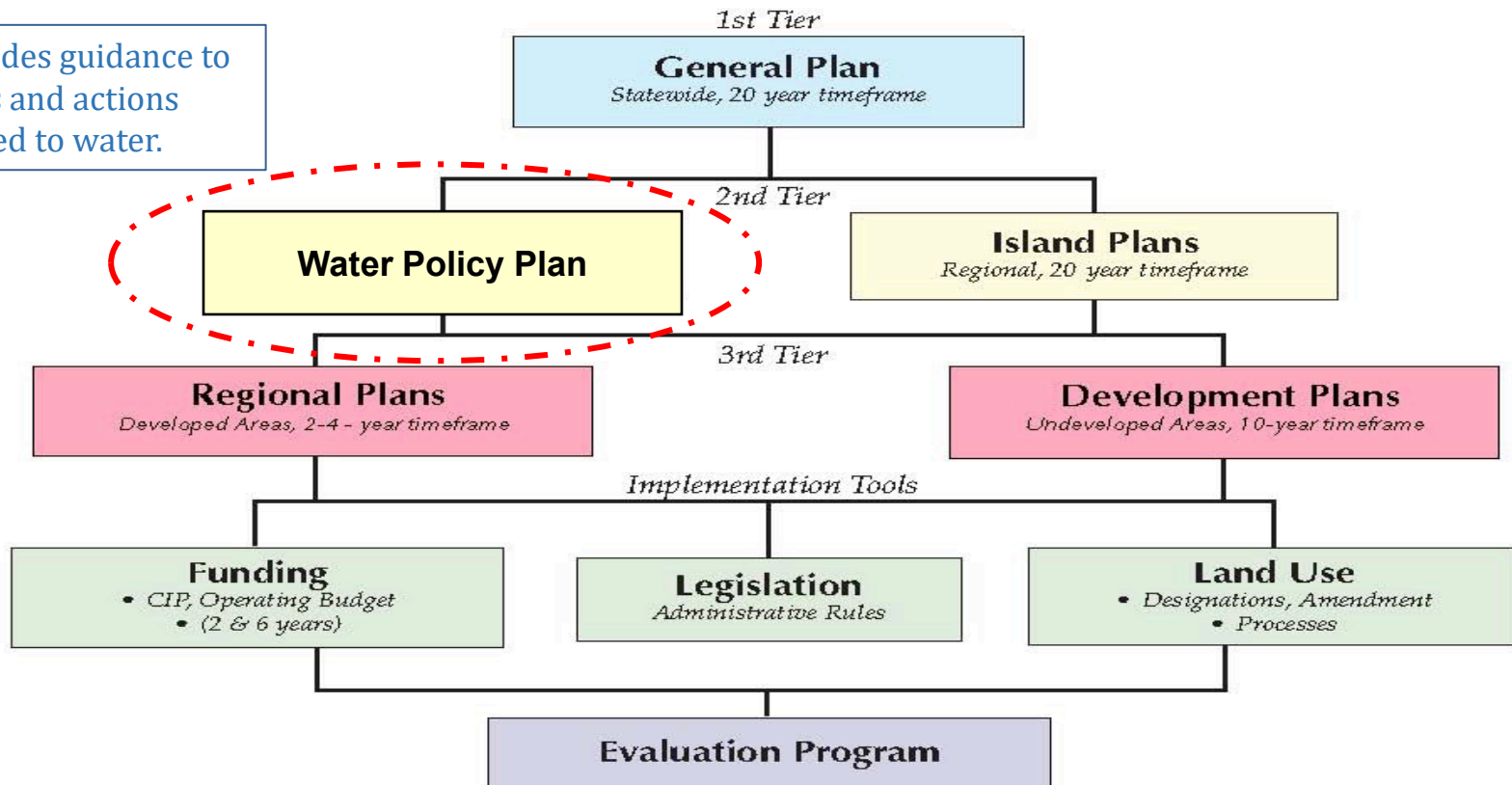
One hundred qualified Hawaiians could be placed on Hawaiian Homes Commission land, at Waimanalo quickly if the Suburban Water System says it will supply water to families given homestead land.



DHHL Planning System

*Hawai'i Administrative Rules
§10-4-51 to §10-4-60

Provides guidance to
plans and actions
related to water.



Existing Maui Water

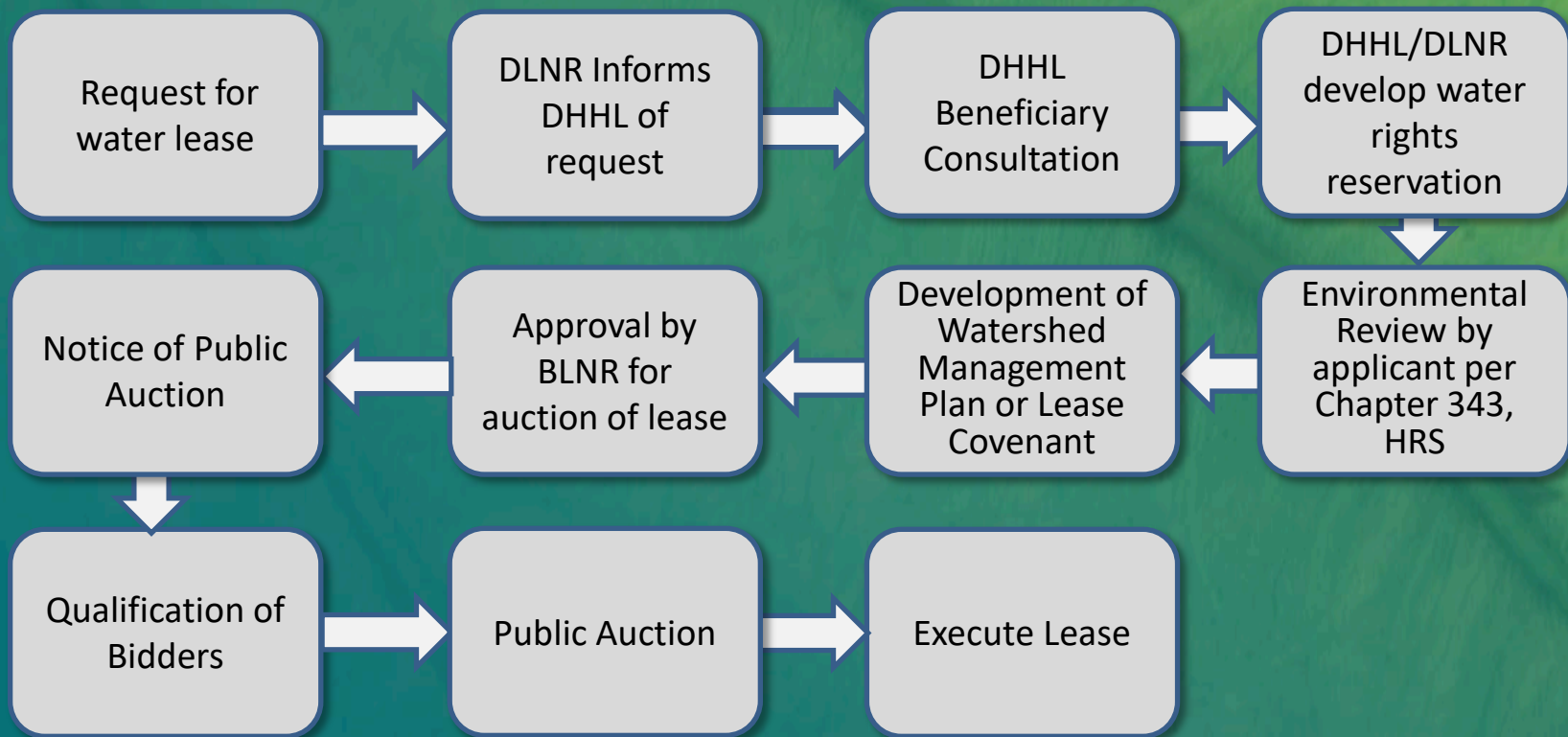
Hydrologic Unit	Quantity Reserved (MGD)	Effective Date
Honokōwai	0.770	September 18, 2018
Kamaole	2.547	September 18, 2018
Keʻanae	0.003	September 18, 2018
Kawaipapa	0.118	September 18, 2018
Lualaiula	0.063	September 18, 2018
Honokōhau, Honolua (surface)	2.00	May 18, 2021

When Does the Reservation Process Start?

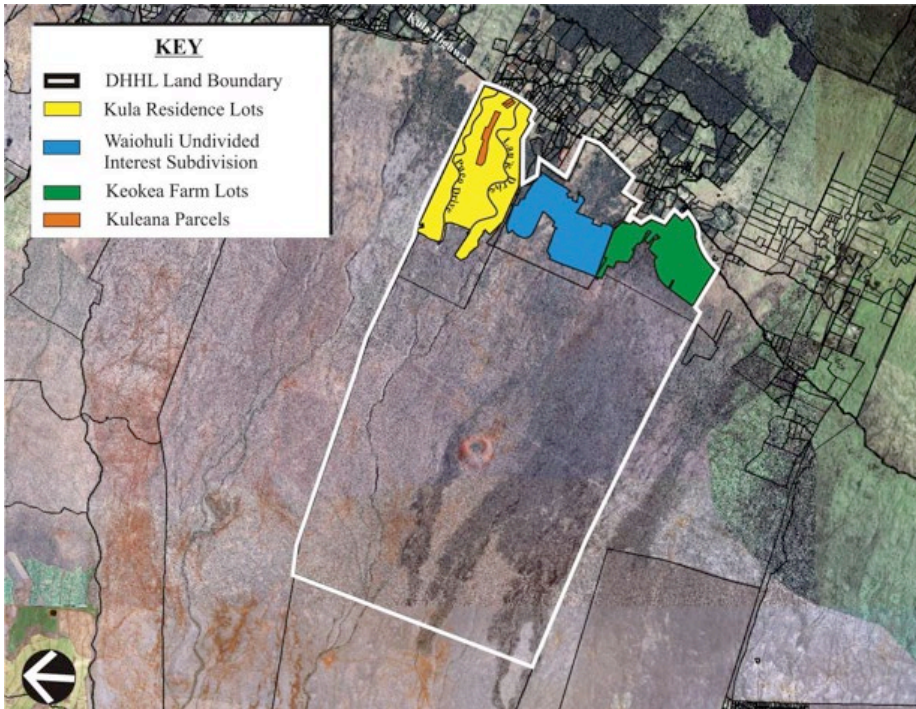
- **CWRM action; or**
- **DHHL Request; or**
- **BLNR Leasing**

DLNR's Water Leasing Process

Chapter 171-58, HRS



Kēōkea-Waiohuli

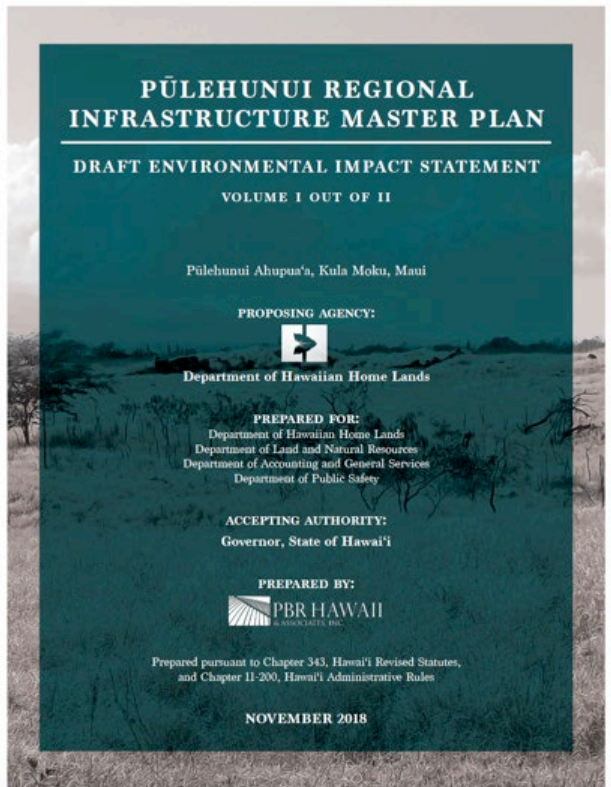


Priority Project - Develop Water Source and Related Infrastructure for Agricultural and Residential Lots

Kēōkea-Waiohuli	Potable	Non-Potable
From SWPP	809,700	578,000
Already Reserved	813,000	
3,940 ac. Gen. Ag @2500		9,850,000
Adjusted Totals		10,428,000

- **No non-potable allocations for:**
 - **Existing Ag lots (425,000 gpd)**
 - **Gen. Ag of 3,940 acs. below homes (9,850,000 gpd)**
- **Potential Reservations: 10,275,000 gpd**

Pūlehunui



	Potable	Non-Potable
Pūlehunui	1,734,000	1,027,510
Already Reserved	1,734,000	
Adjusted Total	0	1,027,510

- Pūlehunui Regional Infrastructure Master Plan, Draft EIS submitted
- Includes Other Agencies
- New Community Visions
- Groundwater is brackish
- Potential Reservations: 1,027,510 gpd

Reservation Request Process

- **BC January 14, 2019**
- **BC Acceptance: May 30, 2019**
- **Reservation Request Filed: December 16, 2020**
- **Total Request: 11,177,500 gpd**
 - **1,327,500 for Pūlehunui**
 - **9,850,000 for Kēōkea / Waiohuli**
- **CWRM finally considered last week**

CWRM 11 15 22

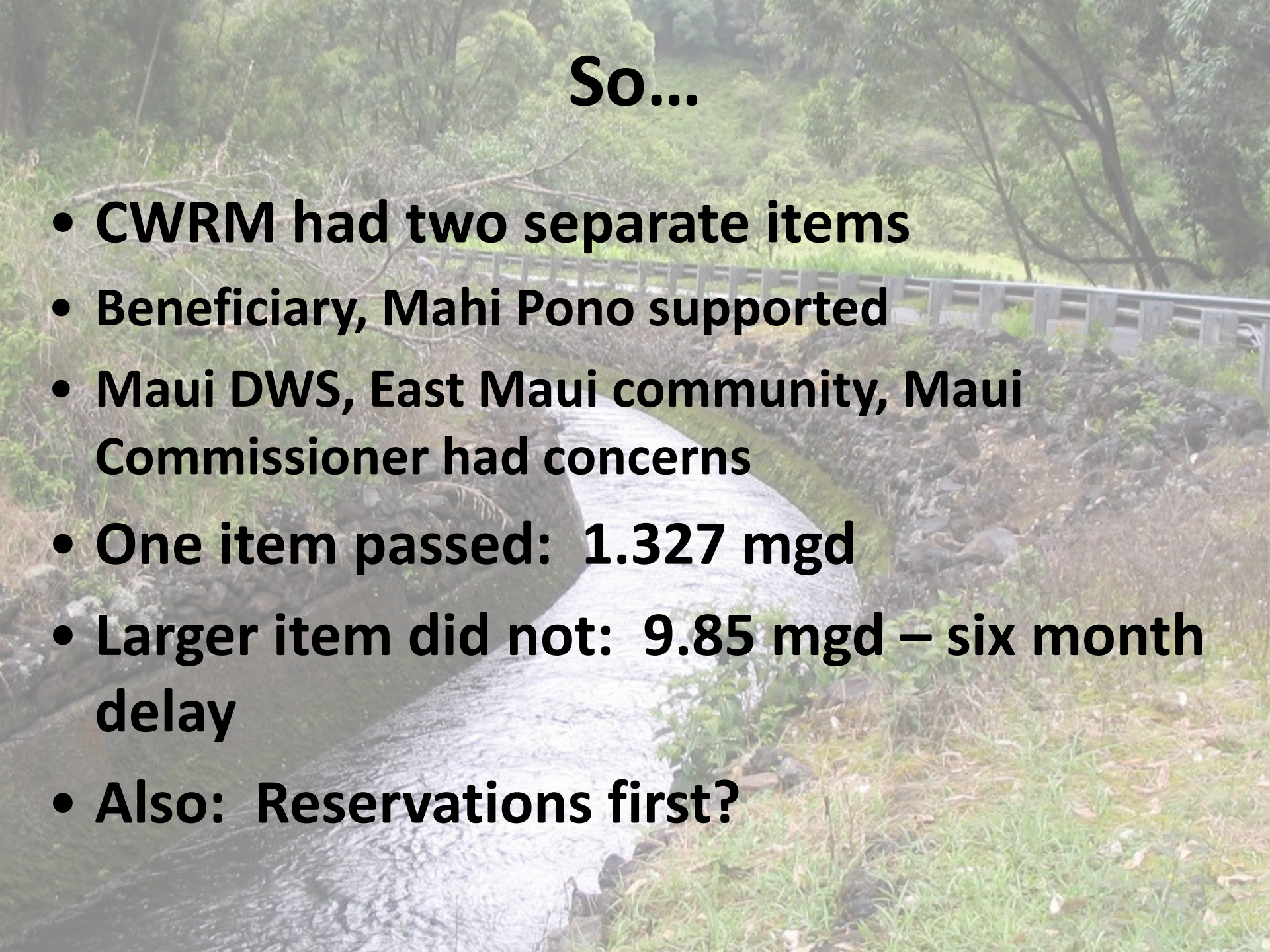


being attached to this water reservation

zoom

But...

- **How CWRM is supposed to manage water**
 - First allow for Public Trust (PT) uses
 - Then, if there is excess, consider non-PT uses
- **PT Uses**
 - Water in its natural state, T&C practices, DHHL reservations, Domestic needs
- **What CWRM did**
 - Implied DHHL needs would result in reduced stream flow



So...

- **CWRM had two separate items**
- **Beneficiary, Mahi Pono supported**
- **Maui DWS, East Maui community, Maui Commissioner had concerns**
- **One item passed: 1.327 mgd**
- **Larger item did not: 9.85 mgd – six month delay**
- **Also: Reservations first?**

Next Steps

- DHHL requested bifurcation – reservations considered on their own
- Work continues on designing delivery to our `āina



Nīnau?

