

Site Assessment Highlights

- Existing Roadways
- County Water Main
- Slope Range
 - < 10% (Preferred)
 - 10 - 20% (Feasible)
 - > 20% (Too steep for some land uses)

Notes

- Slope less than 10% is preferred for Residential, Pastoral (grazing), Community Use, Commercial, and Industrial.
- Slope less than 15% is preferred for Subsistence, Supplemental and Community Agriculture.
- Slope up to 20% is feasible for all land uses above. Pastoral (ag uses) can go up to 30%.
- Slope greater than the above is too steep.
- The soil at the site is rated low for ag uses.
- Water availability and supply to the site are uncertain.

Island Plan Update

Land Use Designations

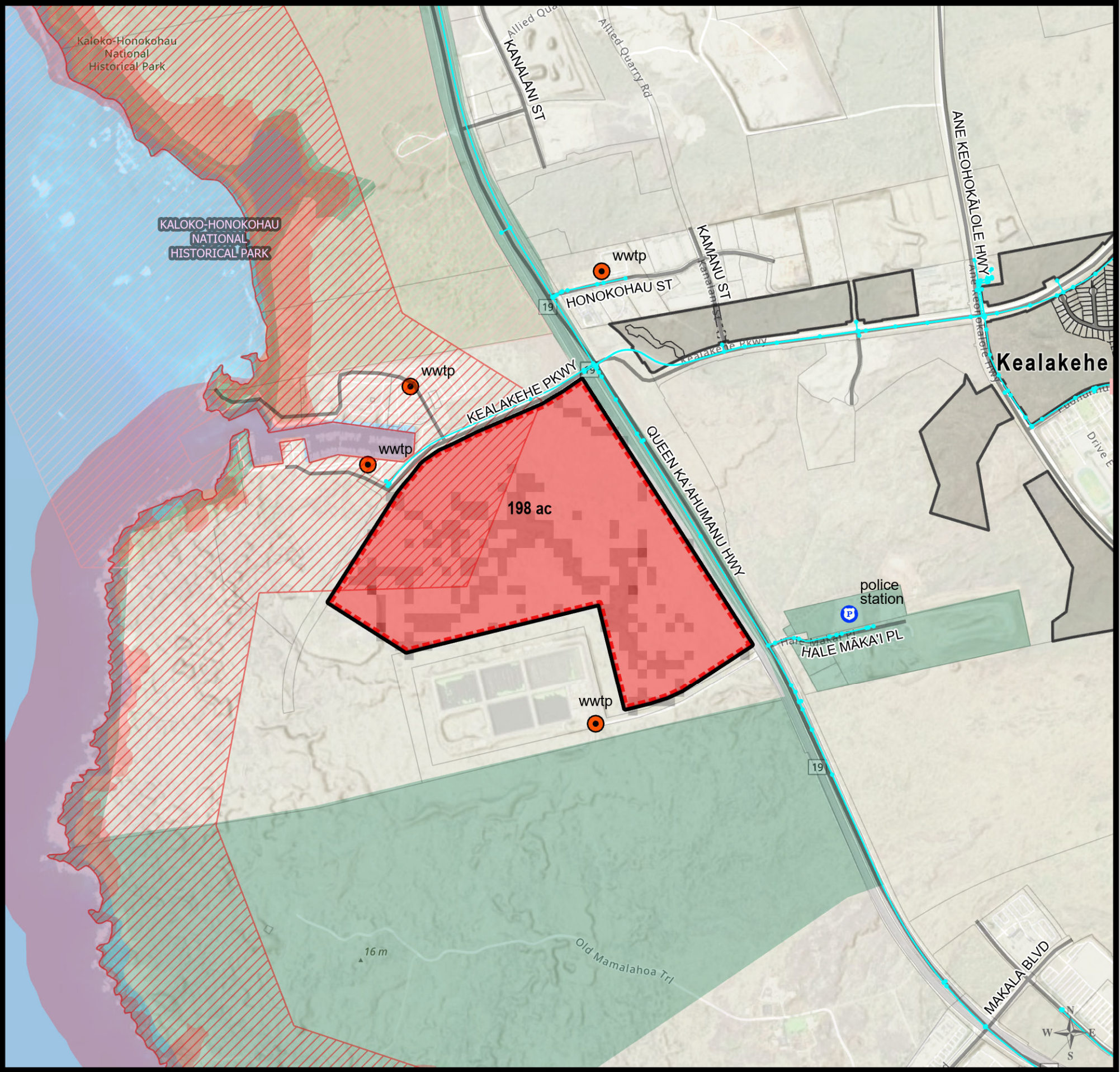
Homestead Uses

Residential	147.4
Subsistence Agriculture	0.0
Supplemental Agriculture	0.0
Pastoral	0.0
DHHL Kuleana	0.0

Non-Homestead Uses

Community Use	2.1
Community Agriculture	0.0
Commercial	0.0
Industrial	0.0
Renewable Energy	0.0
Stewardship	0.0
Conservation	0.0
Special District	0.0

Approximate Total Acres
± 149.5



Site Assessment Highlights

- County Water Main
- Flood Prone Areas
- Tsunami Evacuation Zone
- State & County Conservation
- Slope Range
 - < 10% (Preferred)
 - 10 - 20% (Feasible)
 - > 20% (Too steep for some land uses)

Notes

- The site is generally flat.
- The site is partially within tsunami evacuation area.
- The soil rating data for ag uses at the site is not available.
- Slope less than 10% is preferred for Residential, Pastoral (grazing), Community Use, Commercial, and Industrial.
- Slope less than 15% is preferred for Subsistence, Supplemental and Community Agriculture.
- Slope up to 20% is feasible for all land uses above. Pastoral (ag uses) can go up to 30%.
- Slope greater than the above is too steep.
- Water availability and supply to the site are uncertain.



Island Plan Update

Land Use Designations

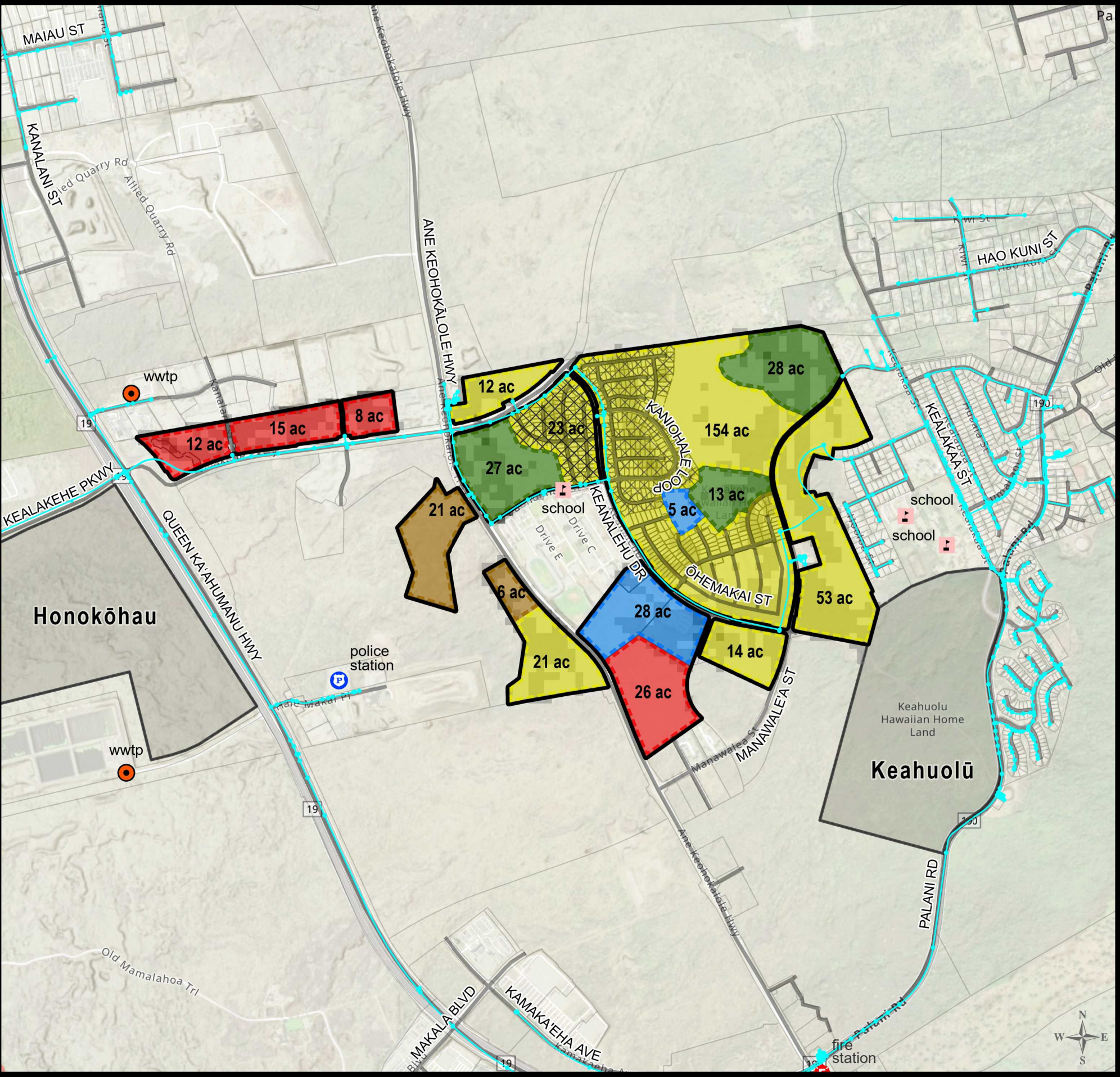
Homestead Uses

Residential	0.0
Subsistence Agriculture	0.0
Supplemental Agriculture	0.0
Pastoral	0.0
DHHL Kuleana	0.0

Non-Homestead Uses

Community Use	0.0
Community Agriculture	0.0
Commercial	200.0
Industrial	0.0
Renewable Energy	0.0
Stewardship	0.0
Conservation	0.0
Special District	0.0

Approximate Total Acres
± 200.0



Site Assessment Highlights

- Long Term Leases
- Existing Roadways
- County Water Main
- Slope Range
 - < 10% (Preferred)
 - 10 - 20% (Feasible)
 - > 20% (Too steep for some land uses)

Notes

- The land uses are mapped to show the 2020 regional plan update.
- The soil rating data for ag uses at the site is not available.
- Slope less than 10% is preferred for Residential, Pastoral (grazing), Community Use, Commercial, and Industrial.
- Slope less than 15% is preferred for Subsistence, Supplemental and Community Agriculture.
- Slope up to 20% is feasible for all land uses above. Pastoral (ag uses) can go up to 30%.
- Slope greater than the above is too steep.
- Water availability and supply to the site are uncertain.

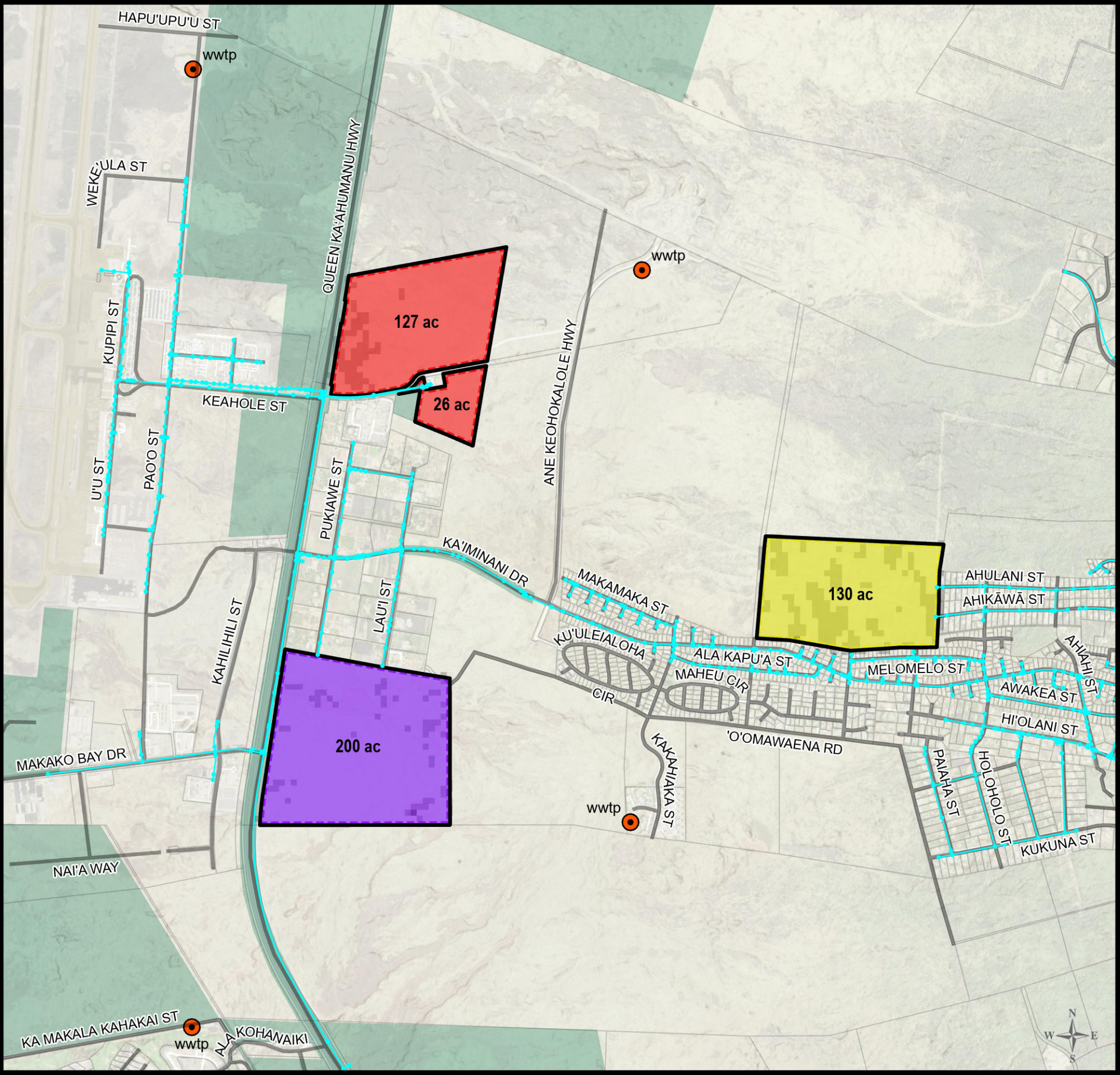


Island Plan Update

Land Use Designations

Homestead Uses		
Residential	277.6	
Subsistence Agriculture	0.0	
Supplemental Agriculture	0.0	
Pastoral	0.0	
DHHL Kuleana	0.0	
Non-Homestead Uses		
Community Use	33.3	
Community Agriculture	0.0	
Commercial	60.6	
Industrial	0.0	
Renewable Energy	0.0	
Stewardship	27.3	
Conservation	68.4	
Special District	0.0	

Approximate Total Acres
± 467.3



Site Assessment Highlights

- Existing Roadways
- County Water Main
- State & County Conservation
- Slope Range
 - < 10% (Preferred)
 - 10 - 20% (Feasible)
 - > 20% (Too steep for some land uses)

Notes

- The site is generally flat.
- The ag soil rating data for the two lots along Queen Ka'ahumanu Hwy is not available.
- The ag soil rating for the 130-ac lot is low.
- Slope less than 10% is preferred for Residential, Pastoral (grazing), Community Use, Commercial, and Industrial.
- Slope less than 15% is preferred for Subsistence, Supplemental and Community Agriculture.
- Slope up to 20% is feasible for all land uses above. Pastoral (ag uses) can go up to 30%.
- Slope greater than the above is too steep.
- Water capacity and availability to the site are uncertain.



Island Plan Update

Land Use Designations

Homestead Uses		
Residential	130.0	
Subsistence Agriculture	0.0	
Supplemental Agriculture	0.0	
Pastoral	0.0	
DHHL Kuleana	0.0	
Non-Homestead Uses		
Community Use	0.0	
Community Agriculture	0.0	
Commercial	152.5	
Industrial	200.0	
Renewable Energy	0.0	
Stewardship	0.0	
Conservation	0.0	
Special District	0.0	

Approximate Total Acres
± 482.5